

DORSETT



Dorsett Chengdu
2024



成都帝盛酒店 Dorsett Chengdu

坐落于历史悠久的骡马市核心区域毗邻成都最繁华的市区春熙路，离酒店寸步之遥的地铁1号线及地铁4号线为商务和休闲旅客提供便捷的交通网络可轻松到访太古里、国际金融中心IFS等繁华商业区以及天府广场、宽窄巷子、文殊院等热门景点。

酒店的556间客房宽敞舒适，设计时尚优雅，每一处细节都巧具匠心。客房配置高端现代，为宾客营造非凡的住宿体验。高速无线网络全覆盖让您随时随地分享在成都帝盛酒店度过的美妙时光！

The hotel is conveniently located in the central business district Luomashi offering easy access to both business and leisure destinations.

In the 42-storey hotel, there are 556 rooms in total including 95 suites and 461 guestrooms with aesthetically-appealing design.

Metro Line 1 and 4 directly in front of the hotel.



大堂 Lobby





大堂
Lobby

客房 ROOMS



客房ROOMS

房间以中式和亚洲风韵为装饰风格，每个房间都设有飘窗可饱览城市风光。房间全区域免费WiFi覆盖，智能化控制系统，温馨舒适的床品、家私，超大淋浴设施配备上等洗涤护理用品，无论是淋浴花洒还是浪漫浴缸，都为您带来无可媲美的绝佳入住体验。

Each room features a bay window offers panoramic view of the city, supremely comfortable bedding and ensuite bathroom. A set of traditional Chinese Tea board in each room. Free use of WIFI to ensure seamless connectivity and a full range of bathroom amenities.

All rooms furnished with contemporary fittings complemented with touches of Chinese and Asian elements.

客房Rooms

帝盛大床房 Dorsett Room
32 平米/sq. m.



豪华大床房 Deluxe Room
42 平米/sq. m.



客房Rooms

帝盛套房 Dorsett Suite

50 平米/sq. m.



行政套房 Executive Suite

45 平米/sq. m.



客房Rooms

家庭套房 Family Suite

50 平米/sq. m.



行政豪华套房 Executive Deluxe Suite

54 平米/sq. m.



客房Rooms

主席套房 Chairman Suite

200 平米/sq. m.



客房设施

Room Features & Facilities

- 客房送餐
- 免费提供咖啡喝茶
- 全套卫浴客用品
- 免费室内宽带网络
- 电子保险箱
- 国际直播电话
- 迷你吧
- 卫星/有线电视频道
- 茶具
- 百度智能音响
- In room Dining
- Complimentary Coffee/Tea Facility
- Full range of bathroom amenities
- Complimentary Wi-Fi access
- In room safe deposit boxes
- IDD Telephone
- Minibar
- Satellite/Cable television
- A set of teapot
- Baidu Intelligent Speaker



餐饮

Food & Beverage

餐饮 Outlets

| | |
|--------------------------------|----|
| 大堂吧 | 1F |
| 悦蓉咖啡厅 | 2F |
| 行政酒廊 | 4F |
| 福悦轩中餐厅 | 6F |
| Breeze | 7F |
| | |
| The lobby lounge | 1F |
| Yue Rong Café | 2F |
| Executive Lounge | 4F |
| Fu Yue Xuan Chinese Restaurant | 6F |
| Breeze Outdoor Garden | 7F |

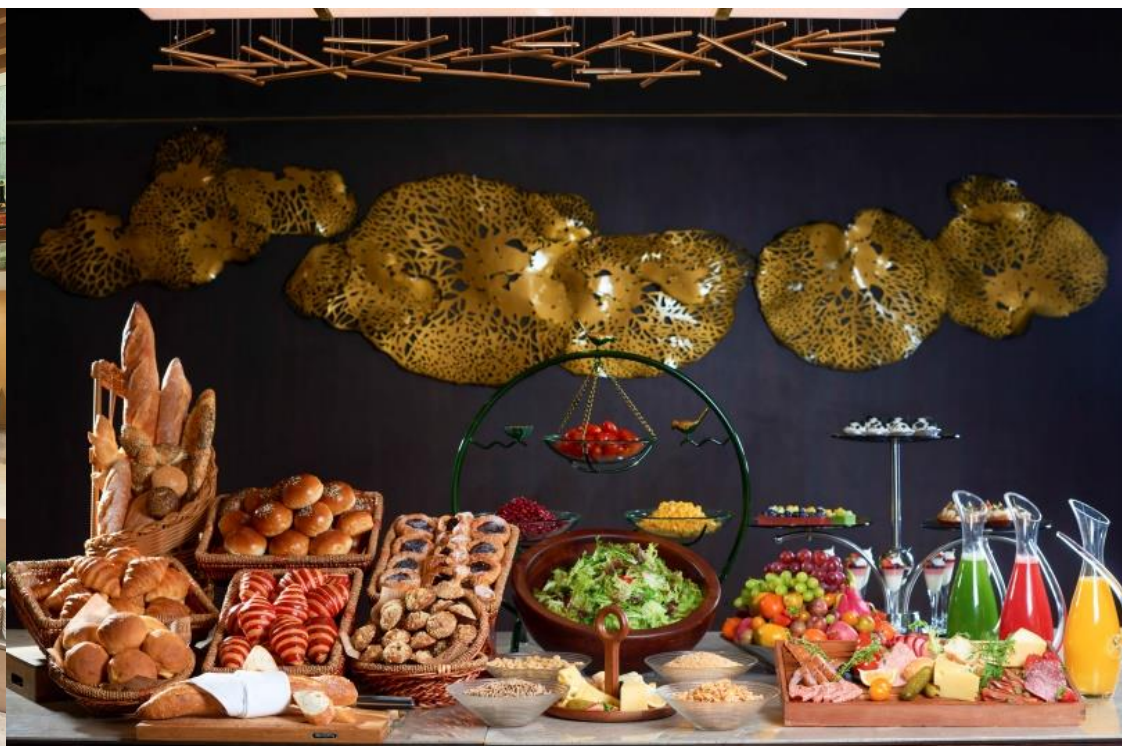


大堂吧

Lobby Bar



悦蓉咖啡厅 Yue Rong Café



福悦轩中餐厅

Fu Yue Xuan Chinese Restaurant



行政酒廊 “悦廊” The “Vibrant” Executive Lounge



会议 & 宴会

Meeting & Banquet



灵感会议 完美启程

INSPIRED MEETINGS IN DORSETT CHENGDU

典雅无柱式超700平方米宴会厅、10间不同类型的会议室、VIP休息室和新娘化妆间均设有高科技的配备。我们的专业团队可协助您安排宴会的每个细节。

The elegant pillarless over 700 square meters ballroom, 10 meeting rooms of various sizes, VIP room and bridal room are all fully equipped with state-of-the-art facilities. Our dedicated banquets team is on hand to ensure every aspect of your event runs smoothly.



帝盛厅 (宴会)
Dorsett Ballroom



DORSETT
CHENGDU
成都帝盛酒店

帝盛厅

Dorsett Ballroom

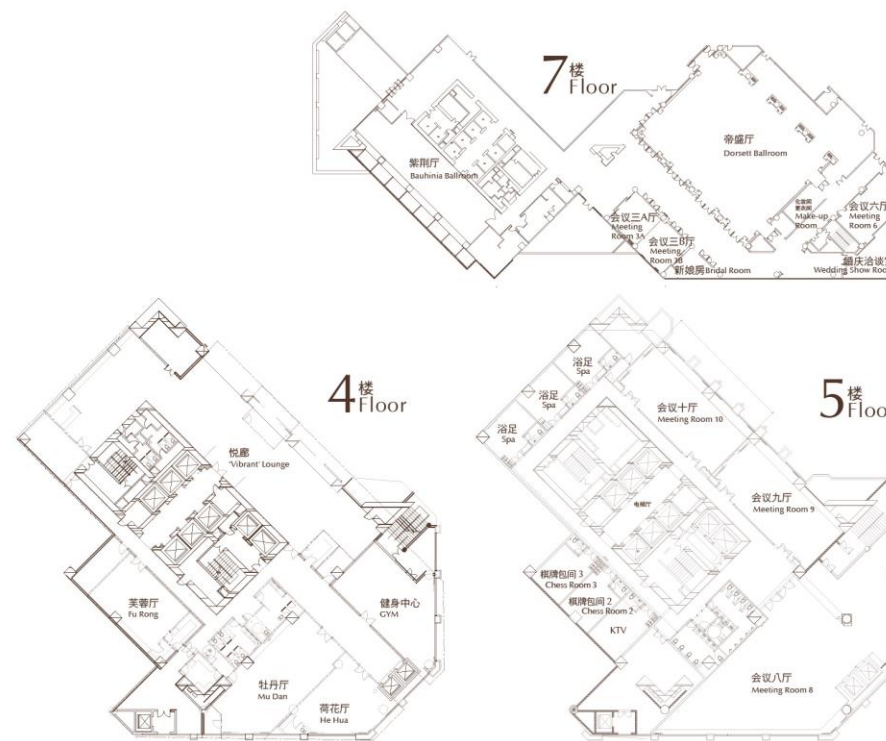


紫荆厅
Bauhinia Ballroom

会议室摆台及容量

Floor Plan & Capacity Chart

| 场地 Venue | 长度(米) Length (m) | 宽度(米) Width (m) | 楼高(米) Height (m) | 面积(平方米) Area (m) | 可容纳人数及布置形式 Capacity & Setup Style | | | | | | | |
|------------------------------|---------------------|--------------------|---------------------|---------------------|--------------------------------------|------------------|------------------|----------------------|---------------|---------------|-------------------|--|
| | | | | | 宴会 Banquet | 课桌式 Classroom | 鸡尾酒会 Cocktail | 口字形 Hollow Square | 剧院 Theatre | U型 U-Shape | 圆桌 Round Table | |
| 7/F 帝盛厅 Dorsett Ballroom | 28 | 21 | 4.5 | 582+152 | 460 | 300 | 600 | / | 600 | 140 | / | |
| 帝盛I厅 Dorsett Ballroom I | 14 | 21 | 4.5 | 367 | 160 | 120 | 250 | / | 220 | 60 | / | |
| 帝盛II厅 Dorsett Ballroom II | 14 | 21 | 4.5 | 367 | 160 | 120 | 250 | / | 200 | 60 | / | |
| 紫荆厅 Bauhinia Ballroom | 30 | 8 | 3 | 240 | 140 | 100 | 200 | 64 | 200 | 63 | / | |
| 会议三厅 Meeting Room 3 | 13 | 8 | 3 | 104 | 40 | 42 | 50 | 30 | 60 | 30 | / | |
| 会议3A厅/3B厅 Meeting Room 3A/3B | 7 | 8 | 3 | 52 | 20 | 21 | / | 15 | 30 | 15 | / | |
| 会议六厅 Meeting Room 6 | 11 | 7 | 3 | 77 | 20 | 30 | 30 | 20 | 50 | 24 | / | |
| 5/F 会议八厅 Meeting Room 8 | 28 | 13 | 2.6 | 364 | 150 | / | 220 | / | / | / | / | |
| 会议九厅/十厅 Meeting Room 9/10 | 15 | 5 | 2.6 | 81 | 40 | 36 | 50 | 30 | 50 | 27 | / | |
| 4/F 荷花厅 He Hua | 9 | 7.1 | 3 | 64 | / | / | / | / | / | / | 24 | |
| 牡丹厅 Mu Dan | 17 | 6.9 | 3 | 117 | / | 24 | / | 36 | / | 30 | 32 | |
| 芙蓉厅 Fu Rong | 9.5 | 7.1 | 3 | 67 | / | / | / | 30 | / | 20 | 16 | |



DORSETT
CHENGDU
成都帝盛酒店

设施

Facilities



设施 Facilities

1F 商务中心 Business Centre

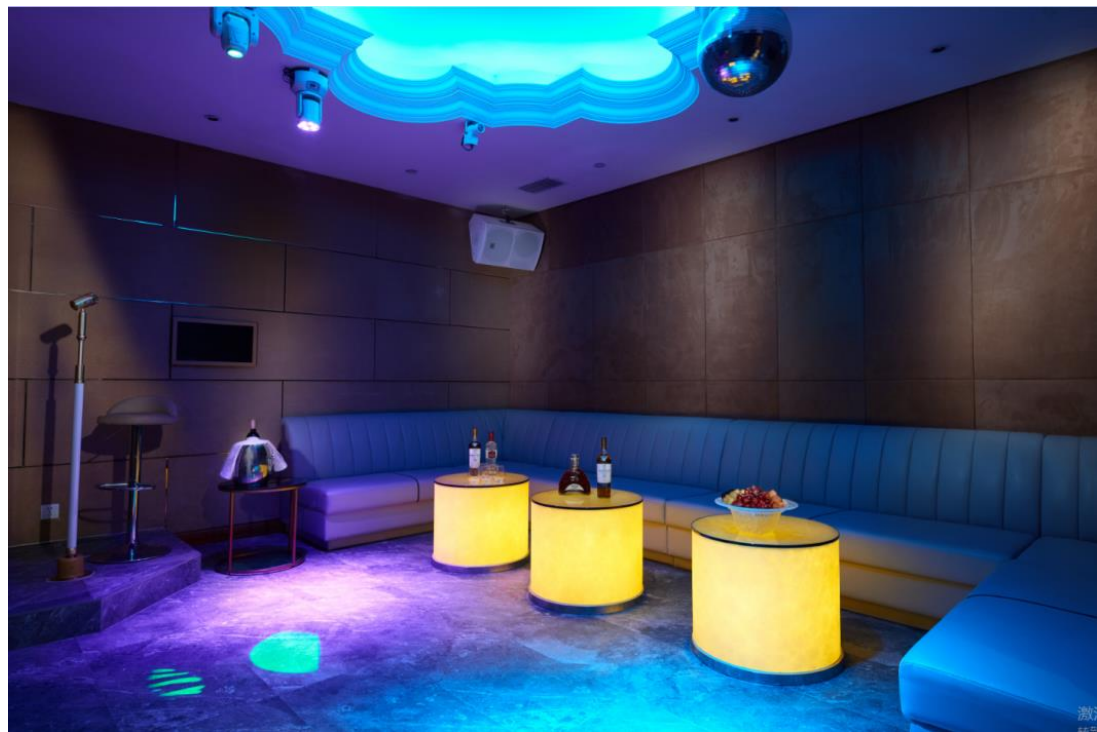


4F 健身中心 Fitness Centre



设施 Facilities

5F KTV



4F 台球室 Snooker



成都旅游观光

Chengdu Attractions

成都旅游观光

Chengdu Attractions

- **成都太古里** 太古里与历史悠久的大慈寺相拥为邻，取其古今街道建筑风格，成为成都一道亮丽风景线。众多国际美食及亚洲风味美食餐厅汇聚于此。

- **春熙路** 春熙路位于成都市中心，是一个悠久的历史，繁华的商业区。

- **成都国际金融中心** 成都国际金融中心是成都最新最潮的时尚地标。全球最高端的国际一线品牌、时尚的消费品牌大量入住。

- **Taikoo Li** Taikoo Li embraces the historic Daci Temple with architecture inspired by traditional and modern Chinese streets. High end retail with a multitude of international and Asian cuisine restaurants can be found.

- **Chunxi Road** Chunxi Road is located in Chengdu city center, is a long history, bustling downtown business district, is most representative of Chengdu, the most bustling commercial pedestrian street.

- **IFS Centre** Developed as a 'City within a City', Chengdu IFS has been designed to be a world-class, one-stop destination, uniting retail, leisure, and entertainment.



成都旅游观光

Chengdu Attractions

- **漫游宽窄巷子** 宽窄巷子始建于清朝时期，是成都这个古老又年轻的城市往昔的缩影。琳琅满目的当地风味餐厅和特色购物街区令来往宾客流连忘返。
- **武侯祠里梦三国/锦里咏叹** 成都武侯祠，始建于三国时代，是中国惟一的君臣（刘备、诸葛亮）合祀祠庙。重建于清朝（1672年），并为我们呈现多彩的蜀国文化。百年木板门，千载石板路，锦里连接武侯祠，集旅游购物、饮食娱乐为一体，保留着属于这个城市的诗意与灵动，给人一种品不完的古韵风情。
- **大熊猫繁育研究基地** 成都是大熊猫的故乡。其中，大熊猫繁育研究基地备受欢迎。
- **Kuan & Zhai Alleys** Kuan & Zhai Alleys were the first built during the Qing Dynasty for Manchu soldiers to inhabit, this well-known (and recently renovated) tourist attraction offers local street shopping and restaurants with amazing Chinese traditional architecture to enjoy.
- **Wuhou Temple & Jinli Ancient Street** Wuhou Temple was dedicated to Emperor Liu Bei and his Hand Zhuge Liang of the Three Kingdoms period, Wuhou Temple was re-built during the Qing dynasty in 1672 and offers guests a rich history of the Shu Kingdom. The adjacent Jinli Ancient street area is lined with traditional shopping stalls and restaurants complimenting historic culture with entertaining leisure activities.
- **Chengdu Research Base of Giant Panda Breeding** Chengdu is well known as the central location for China's efforts to conserve the endangered Pandas. The Chengdu Panda Breeding Research Base is a popular tourist attraction of the city.





都江堰 世界文化遗产都江堰是国家5A级旅游景区。都江堰被誉为“世界水利文化的鼻祖”。鱼嘴是一个分水的建筑工程，把岷江水流一分为二。东边的叫内江，供灌溉渠用水；西边的叫外江，是岷江的正流。又在附近的岷江南岸筑了离碓（同堆），离碓就是开凿岩石后被隔开的石堆，夹在内外江之间。离碓的东侧是内江的水口，称宝瓶口，具有节制水流的功用。建堰以来，成都平原沃野千里，“水旱从人，不知饥馑，时无荒年，谓之天府”

Dujiangyan With the honor of the World Cultural Heritage, Dujiangyan is considered the Grade AAAAA National Scenic Spot. Dujiangyan is one of the oldest water projects in the world with a huge artificially made embankment built in the river for the division of water for irrigation and flood prevention. The head project of Dujiangyan consists of the fish mouth, the overflow spillway and the intake opening of Baopingkou. The vast farming areas of Chengdu Plain have been benefited by the water from Dujiangyan and people later refer to these areas as the Land of Abundance.



乐山大佛 乐山大佛，地处中国四川省乐山市，岷江、青衣江和大渡河三江汇流处，与乐山城隔江相望。乐山大佛是唐代摩岩造像中的艺术精品之一，是世界上最大的石刻弥勒佛坐像。大佛开凿于唐代开元元年（713年），完成于贞元十九年（803年），历时约九十年。峨眉山-乐山大佛被联合国教科文组织批准为“世界文化与自然遗产”，列入《世界自然与文化遗产名录》。

Leshan Giant Buddha The 71 meter high Giant Buddha of Leshan is located at the joint place of Minjiang River, Dadu River and Qingyi River. It is known as "the biggest Buddha in the world". This scenic area is an organic combination of both cultural and natural heritages and took 90 years to finish in Tang Dynasty.



青城山 青城山为中国道教发源地之一，属道教名山。青城山是中国著名的历史名山和国家重点风景名胜区，并于2000年同都江堰共同作为一项世界文化遗产被列入世界遗产名录。

Mount Qingcheng Mount Qingcheng is one of the ancient cradles of Taoism. It is a World Cultural Heritage and listed in the first group by the state as the famous scenic spot. The mountain has numerous Taoist temples and sites along the paths to its peak. The area is green all year round and is known for its secluded tranquility.

获奖及顾客点评

Rewards & Guest Reviews

获奖 Rewards



获携程网颁发「2020携程酒店最受喜爱特色酒店」

Favorite Feature Hotel Ctrip

DORSETT
CHENGDU
成都帝盛酒店

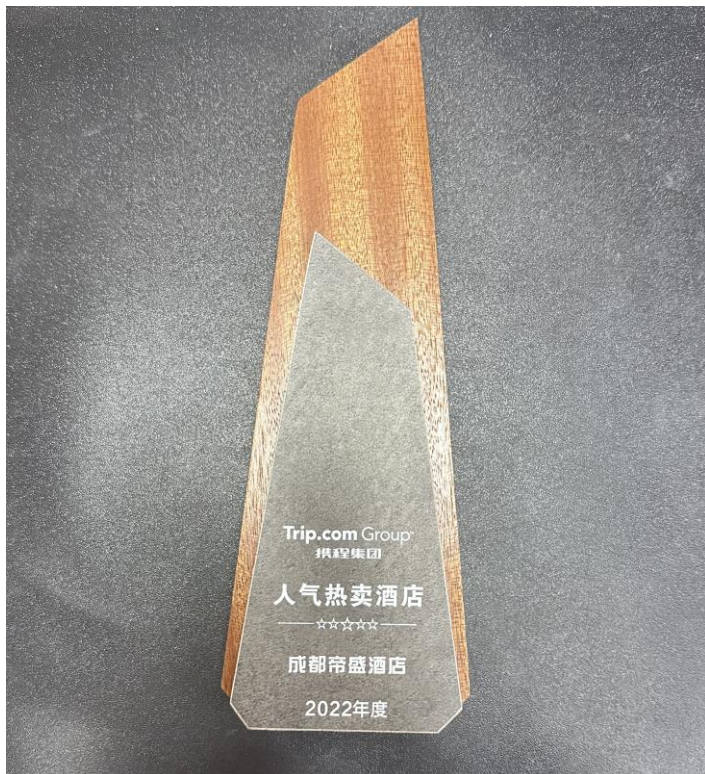
获奖 Rewards



获携程网颁发「2021携程强势复苏里程碑人气酒店奖」

DORSETT
CHENGDU
成都帝盛酒店

获奖 Rewards



获携程网颁发「2022年度人气热卖酒店」

DORSETT
CHENGDU
成都帝盛酒店

获奖 Rewards



获携程网颁发「2023年度人气热卖酒店」

DORSETT
CHENGDU
成都帝盛酒店

获奖 Rewards



猫途鹰排名

在成都3028家酒店中排名第27位 (于2019年7月更新)

Tripadvisor Ranking #27 of 3028 Chengdu hotels
(Update in July 2019)

DORSETT
CHENGDU
成都帝盛酒店

获奖 Rewards



Tripadvisor 猫途鹰
Travellers'
Choice
旅行者之选
2020

成都帝盛酒店
Dorsett Chengdu
基于上亿Tripadvisor猫途鹰用户的体验反馈
该酒店位列全球排名的前10%



获猫途鹰颁发「旅行者之选奖」

TripAdvisor Travelers' Choice 2020

DORSETT
CHENGDU
成都帝盛酒店

顾客点评

Guest Reviews



10.0 Exceptional

🌐 Iris
👤 Group

“Superb stay. hotel staffs are...”

- + stay total of 6 night with total of 2 room for my family of 4, was upgraded on my initial 4 night to a suite, very spacious and nice room with lovely bathtub. hotel staffs are efficient and helpful..
- The cold function of room aircon didn't activate during my stay because of the central control system setting during winter season. Only warm function is activated. Even that, room temperature can...

10.0 Exceptional

🇨🇦 Anthony from Canada
👤 Couple

“This is our second stay at the Dorsett and we would recommend it to other travellers.”

- + The staff was excellent, in particular Cloudy. Our bags did not arrive from Shanghai and the staff checked into it and the bags did arrive the following day. They were encouraging and helpful. They were always there to answer our questions.

DORSETT

CHENGDU
成都帝盛酒店

顾客点评

Guest Reviews

Booking.com



10

Excellent and wonderful !!

😊 · They are just wonderful. Great services, friendly staff, concierge, business center. They are like friends and give their best at all time when you need. Worth the value of money. Will be back again.



10

I wish we had booked a longer stay in Chengdu to enjoy the hotel more.

😊 · Great hotel, very good value for an exceptional and large room.
Breakfast had a large selection.
Staff were helpful and courteous.
Would definitely stay there again.

DORSETT
CHENGDU
成都帝盛酒店

顾客点评

Guest Reviews



5.0 优秀

The hotel was near the metro station, you can anywhere soon and convenience.

5.0 优秀

Good service, there is a famous hot pot restaurant near the hotel. It's a pleasant experience.

5.0 Nice hotel rooms!

We stayed for 4 nights and my room was located on 32nd floor. The room was large (bedroom and living room were separated), a bathtub and standing shower area were available. There were no convenience stores nearby, only some fruit stalls next to the hotel at night. The rooms were neat and tidy, free bottle waters per day. It's worth to stay in Chengdu!

DORSETT

CHENGDU

成都帝盛酒店

交通 Transportation





- 地铁一号线、四号线骡马市站F出口左侧
- 驾车到达成都天府国际机场需要60分钟
- 驾车到达成都双流国际机场需要30分钟
- 驾车到达成都东站需要30分钟

- Metro Line 1 and 4 directly in front of the hotel.
- 60 minutes drive from Chengdu Tianfu International Airport.
- 30 minutes drive from Chengdu Shuangliu International Airport.
- 30 minutes drive from Chengdu East Station to the hotel.

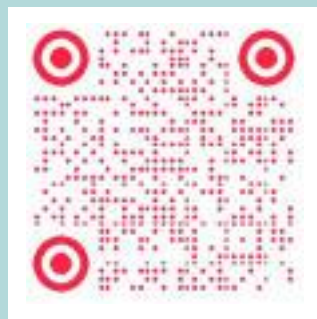
联系我们 Contact us



官方微信公众
Wechat



官方抖音
Tik Tok



官方小红书
Xiaohongshu



官方微信视频号
Wechat Video

四川省成都市青羊区西玉龙街168号
168 Xi Yulong Street, Qingyang District,
Chengdu, Sichuan, China
www.dorsethotels.com/dorsett-chengdu

DORSETT

Stay Vibrant

关于帝盛酒店集团

帝盛酒店集团是亚洲发展最快的酒店集团之一。帝盛酒店集团总部设于香港，业务足迹遍及全球25个主要城市，旗下拥有并管理四个酒店品牌，包括中高端的帝盛酒店及度假村、公寓式酒店Dao by Dorsett、精品酒店系列d.Collection以及经济型的丝丽酒店。每个品牌都有其拥有独特的定位和产品，以满足不同的旅行需求。集团自2007年1月在香港成立，目前与合作伙伴TWH及AGORA Hospitality共同拥有及管理54间分别位于中国大陆、中国香港、马来西亚、新加坡、日本、澳洲、英国和欧洲大陆的物业；正在开发流程中开创更多可能性，未来几年将有多间酒店相继开业。详情请浏览：www.dorsetthospitality.com