

DORSETT SHANGHAI
上海帝盛酒店

DORSETT

SHANGHAI

上海帝盛酒店

800

绝佳的地理位置，步行15分钟可到达浦东新国际博览中心及嘉里城

便利的交通，地铁二号线世纪公园站连接酒店入口

宽敞的豪华公园景观房，饱览世纪公园景观

获奖酒店 - “最佳酒店”、“最佳城市生态酒店”

酒店设计，时尚优雅

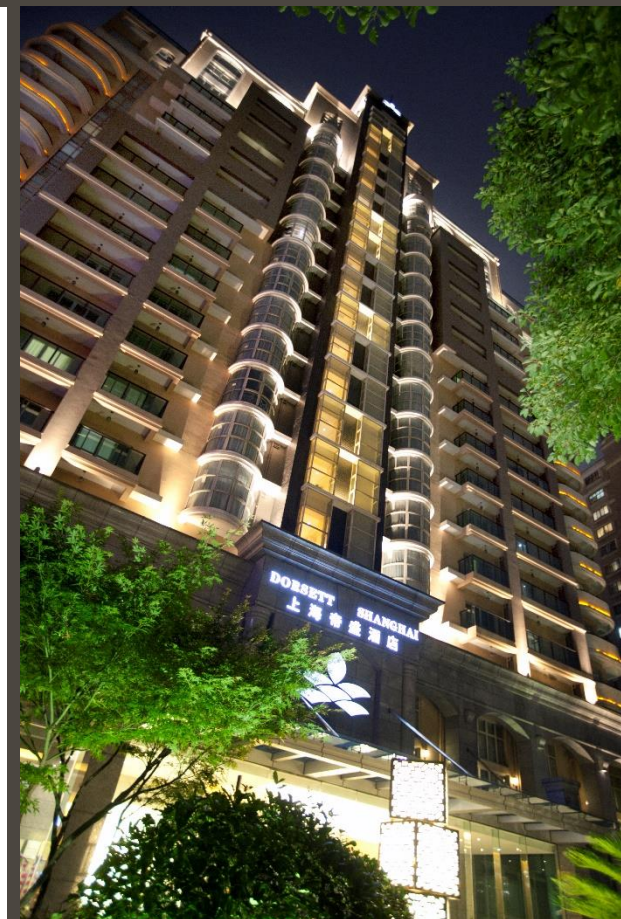
Ideal Location, 15-minutes walk to Shanghai New International Expo Centre & Kerry Parkside Shopping & Entertainment Centre

Convenient Transportation, Metro line 2 Century Park subway station adjacent to the hotel

Spacious Deluxe Park View Room with breathtaking Century Park view

Award Winning Hotel, “The Best Of The Best Hotel” & “The Best Urban Ecological Hotel”

Design-led Hotel, Hip and Elegance



DORSETT
SHANGHAI
上海帝盛酒店

OUR OWN
酒店特色
UNIQUE BLEND

DORSETT SHANGHAI

It's easier and faster to implement your plan

酒店坐落于浦东新区的中心地带
Located in the heart of the dynamic Pudong new district.

DORSETT
SHANGHAI
上海帝盛酒店

The core area of Shanghai



DORSETT

SHANGHAI

上海帝盛酒店

上海新国际博览中心

驾车到达 5分钟

— 5-minute drive to SNIEC

步行到达 15分钟

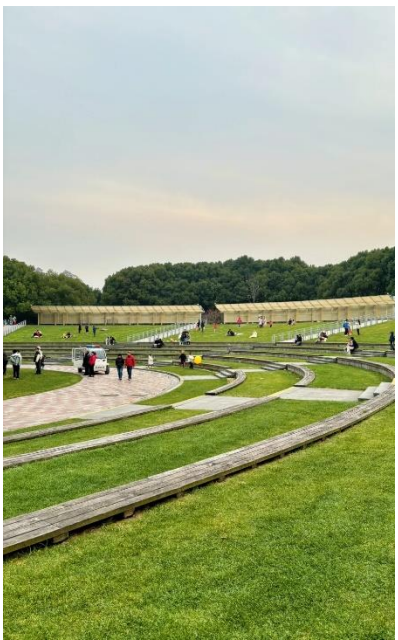
— 15-minute walk to SNIEC





Metro Line 2 (Century Park metro station) 地铁2号线世纪公园站

一站式往返上海主要商圈和交通枢纽
making cross-town meetings and leisure activities a breeze.



陆家嘴金融中心、上海水族馆、东方明珠电视塔 (10分钟)

人民广场、南京路步行街和外滩 (15 分钟)

浦东国际机场(40 分钟地铁或10分钟磁悬浮列车)

Lujiazui Financial Area, Shanghai Aquarium, Oriental TV Tower (10 min)

People's Square, Nanjing Pedestrian Street and The Bund (15 min)

Pudong International airport(40 min by metro or 10 min by maglev train)

DORSETT
SHANGHAI
上海帝盛酒店

附近景点

NEARBY ATTRACTION

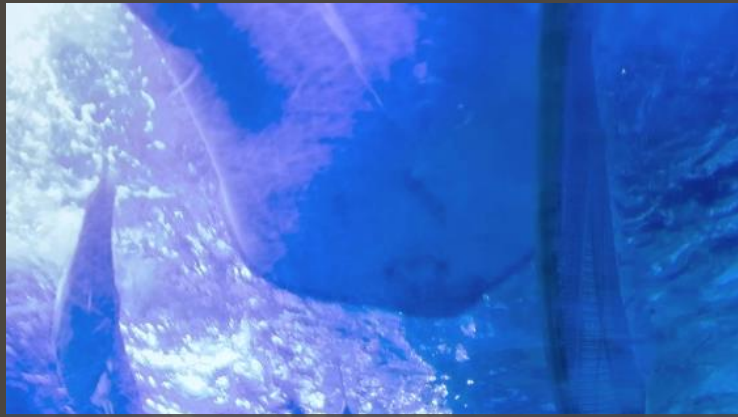


上海科技馆

Shanghai Science and Technology Museum

步行15分钟或乘坐地铁2号线一站即到达上海科技馆

15 minutes walk away along Century Park or take metro 2 subway just one stop to reach the museum.



上海海洋水族馆

Shanghai Ocean Aquarium

位于繁华的陆家嘴金融区，紧邻东方明珠塔。乘坐2号线15分钟即可到达

Located in the heart of Pudong Lujiazui Financial District, adjacent to the Oriental Pearl Tower, take metro 2 subway to reach the Shanghai Ocean Aquarium in 15 minutes ride away.



上海博物馆东馆

Shanghai Museum East

一个中国古代艺术收藏展示平台，步行10分钟乘坐地铁2号线一站到达。

A platform for displaying ancient Chinese art collections, 10 minutes walk away along Century Park or take metro 2 subway just one stop to reach the museum.

我们的产品

地理位置： 浦东新区
客房总数： 264
房间面积： 25m²起
会议室数： 3
餐厅数量： 3

Location : Pudong New District
Total no. of room : 264
Room size : From 25 m²
Function room : 3
F&B Outlet : 3

DORSETT
SHANGHAI
上海帝盛酒店

酒店设施简介

OUR PRODUCTS



DORSETT

SHANGHAI
上海帝盛酒店

ROOMS

≥80% 客房

客房均拥有独立阳台
尽览醉人的城市和世纪公园美景

Dorsett Shanghai is facing Century Park, a peaceful oasis in the city. Over 80% of the rooms have balconies that offer stunning views of the city and Century Park.

Deluxe City View Room
豪华城市景观房

25 m²

特色：

落地玻璃窗提供宽阔视野
俯瞰浦东城市美景

一张双人特大床或两张单人床

Features:

Floor-to-ceiling glass windows provide
a wide view

Expansive view of Pudong

King-size bed or two single beds



DORSETT

SHANGHAI
上海帝盛酒店

Deluxe Park View Room
豪华公园景观房

30-40 m²

特色:

落地玻璃窗提供宽阔视野
俯瞰世纪公园美景

一张双人特大床或两张单人床

Features:

Floor-to-ceiling glass windows provide
a wide view

Expansive view of Century Park

King-size bed or two single beds



DORSETT

SHANGHAI
上海帝盛酒店

Deluxe Studio Room

豪华公寓房

45 m²

特色：

豪华浴室设有淋浴间和浴缸
俯瞰世纪公园的美景
一张双人特大床

Features:

Luxurious bathroom with bathtub and
walk-in shower
Expansive view of Century Park
King-size bed

DORSETT

SHANGHAI
上海帝盛酒店



Loft Suite
复式套房

60 m²

特色：
迷你备餐区域
雨林式花洒淋浴间
一张双人大床

Features:
Mini pantry
Walk-in rainforest shower
King-size bed



Family Suite
家庭套房

75 m²

特色:

弧形特大阳台正对世纪公园
内设两间卧室

一张双人特大床和两张单人床

Features:

Super large roundabout balcony
facing Century Park

Two-bedroom on split level

King-size bed with two single beds

DORSETT

SHANGHAI
上海帝盛酒店



餐厅&酒吧

丰富的菜品和酒水
各色氛围的用餐体验

A wide selection of dishes and drinks
A dining experience with a variety of atmospheres



R E S T A U R A N T S

&

B A R S

Sunshine room western restaurant & Late night neon bar

DORSETT

SHANGHAI

上海帝盛酒店

西餐厅

Gusto On The Green

The a la carte menu offers simple favorites, from salads to scrumptious sandwiches; and sublime fare including the specialties of the Mediterranean, grills and popular Chinese and Southeast Asian delicacies



享受富于东西方特色自助早餐

雅致的就餐氛围

极好的地中海式特色菜

流行中国菜

东南亚特色菜供您挑选。



DORSETT
SHANGHAI
上海帝盛酒店



畅饮一番或品味咖啡与茶

风水吧

Feng Shui Bar

Chic and sassy, Feng Shui Bar is a rendezvous of the old and new. Bar counter built with multi-coloured glass that gives off a sensational spray of vibrant hues against a romantic atmosphere. The beverage list features fine wines and delicious cocktail drinks.

彩色琉璃堆砌的古典吧台



营造带有跳跃色彩的浪漫氛围

提供各式鸡尾酒、威士忌、经典红酒等。

FENGSHUI BAR



传统中国和现代潮流元素的完美结合

DORSETT
SHANGHAI
上海帝盛酒店

时尚又具有活力



BREEZE

一楼户外酒吧

The outdoor lounge is an idyllic spot best for networking and relaxation over drinks, snacks or the timeless tradition of enjoying an afternoon tea.



品着美味可口的小吃和酒水
心旷神怡之情油然而生。

DORSETT
SHANGHAI
上海帝盛酒店



气候宜人的日子里在露天酒吧小坐

新光酒家

Xin Guang Restaurant

The restaurant highlights its main specialty, in particular the "hairy crab", as prepared by its team of master Chinese chefs. Private rooms are available for exclusive dining parties. Enjoy the cuisine of Shanghai and other Chinese regions on the regular menu.

在此处可尽情品味上海和其他城市的地道的特色美食



上海滩最富盛名的蟹宴餐厅之一
餐厅也设有包间供您使用

DORSETT
SHANGHAI
上海帝盛酒店



餐厅大厨为您精心烹制特色毛蟹

会议&宴会

MEETINGS & EVENTS

上海帝盛酒店为您提供适合不同活动需求的会议室，我们都将以灵活、高质量与专业的服务为您提供商务会议或宴会。

酒店的多功能厅均设有落地玻璃窗，让你在会议的休息间隙可以欣赏世纪公园的美景

Whether you are organising a business function or a social gathering, Dorsett Shanghai's meeting and banquet facilities will surpass your expectations and assure that your event is truly a success.

Our meeting venues in Shanghai are a cut above.



Bauhinia Room 紫荆厅

45/90 m²

位于酒店副楼2层的紫荆厅紧邻白玉兰厅，非常适合举办15至25人的会议。

Bauhinia Room is located on second floor sits right next to Magnolia Room; this venue provide a perfect room size for a meeting of 15 to 25 persons.

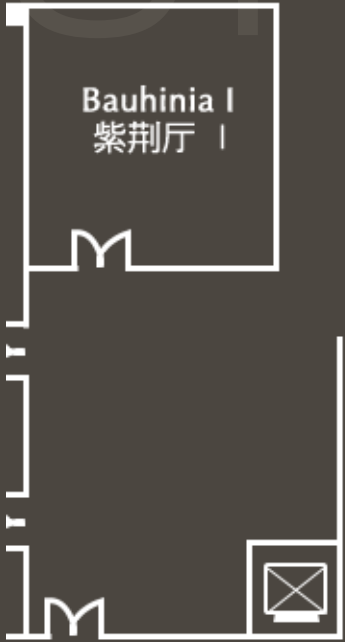


特色：

- 全景玻璃窗设计，一览世纪公园美景
- 吊顶式投影设备
- 1.5米投影幕布

Features :

- Full Window overlooking the view of Century Park
- Ceiling LCD Projector
- 1.5M Screen



Magnolia Room 白玉兰厅

160 m²

位于酒店副楼2层的白玉兰厅可同时容纳80人的剧院式摆台会议。
Magnolia Room, located on the second floor, can accommodate up to 80 persons in theatre style. The function room can be partitioned off as a separate room.



特色:

- 全景玻璃窗设计，一览世纪公园美景
- 两套吊顶式投影设备
- 两套1.8米投影幕布

Features:

- Full Window overlooking the view of Century Park
- 2 sets of Ceiling LCD Projector
- 2 sets of 1.8 m Screen



Peony Ballroom 牡丹厅

240 m²

位于酒店副楼3层的牡丹宴会厅，牡丹宴会厅最多可容纳150人。

Peony Ballroom, located on the third floor, and is ideal for business conferences and wedding banquets for up to 150 persons.



特色：

- 全景玻璃窗设计，一览世纪公园美景
- 吊顶式投影设备
- 2.5米投影幕布

Features :

- Full Window overlooking the view of Century Park
- Ceiling LCD Projector
- 2.5 m Screen



DORSETT

SHANGHAI

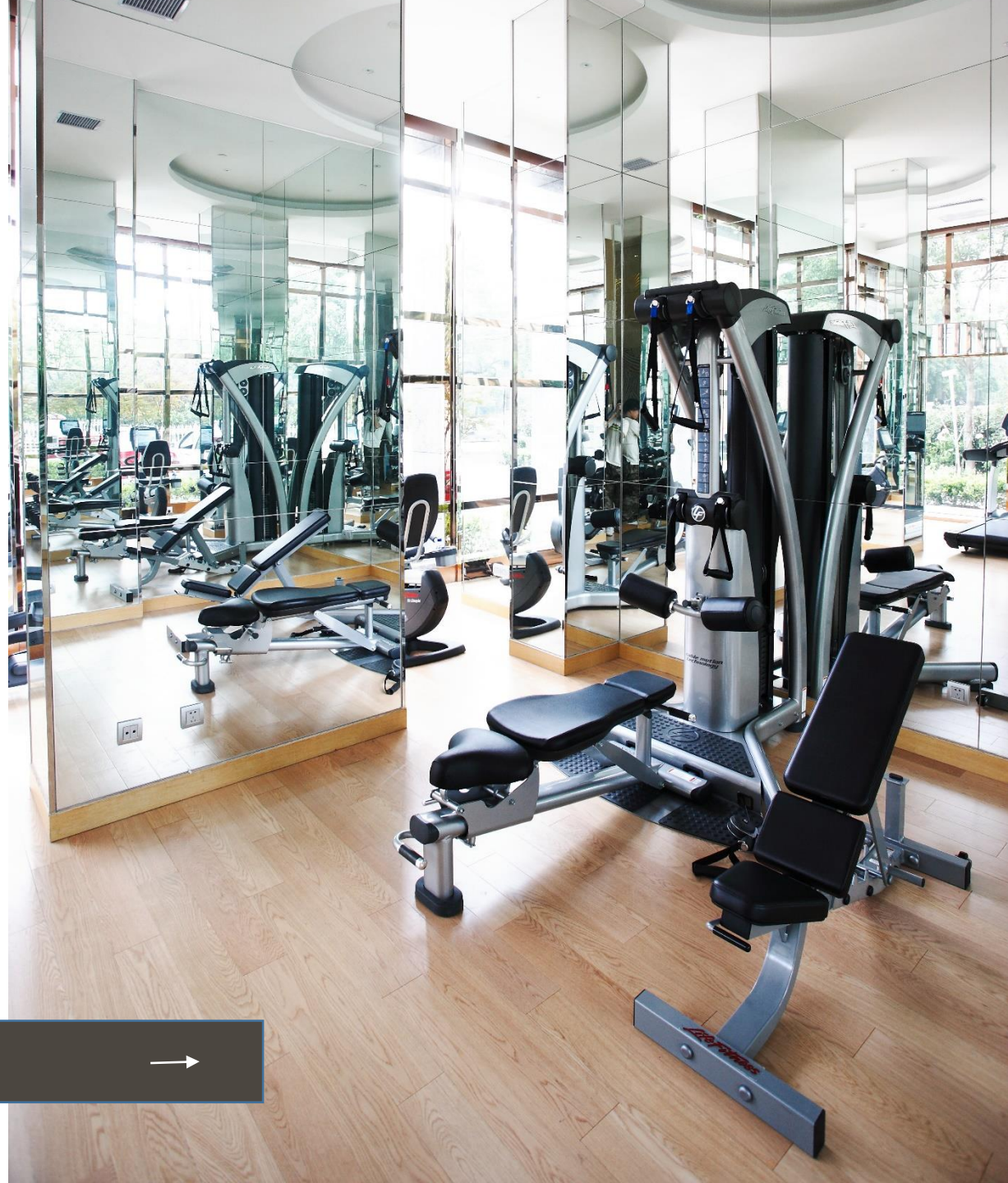
上海帝盛酒店

为出行在外的你
提供如同在家一般的便利

Facilities

上海帝盛酒店是上海浦东区的酒店，也是您
商务出行和举家出游的理想选择。

When looking for a hotel in Shanghai Pudong for either
business or pleasure, Dorsett Shanghai offers travellers
all kinds of facilities for working and working out.



01/ 健身房GYM

提供各有氧运动和负重健身器材，每一个健康爱好者都不会在旅程中错过日常锻炼。

The Health Club boasts the latest in cardio and weight-training equipment, individually equipped with television screens. Health enthusiasts, keep up daily exercise during travel.



02/ 商务中心 Business Centre

为您提供便捷和现代化的商务服务。（如电脑、打印机、传真机、扫描器等）

Business Centre offers modern and up-to-date services for travelling executives. (computers, printers, fax machines, scanners, etc.).



03/ 自助洗衣房 laundromat

24小时免费开放，随时享受轻松旅程。

配备清洗，烘干和熨烫的自助服务。

24-hour operation for free, enjoy a relaxing journey at any time. Self-service with washing, drying and ironing.



04/ 酒店机器人 Hotel Robot

体验各类客房服务与外卖送餐到门的便利。

24小时全天候服务。

Experience room service and the convenience of takeaway food delivery at your doorstep. Feel the charm of technology together with 24-hour round-the-clock service.



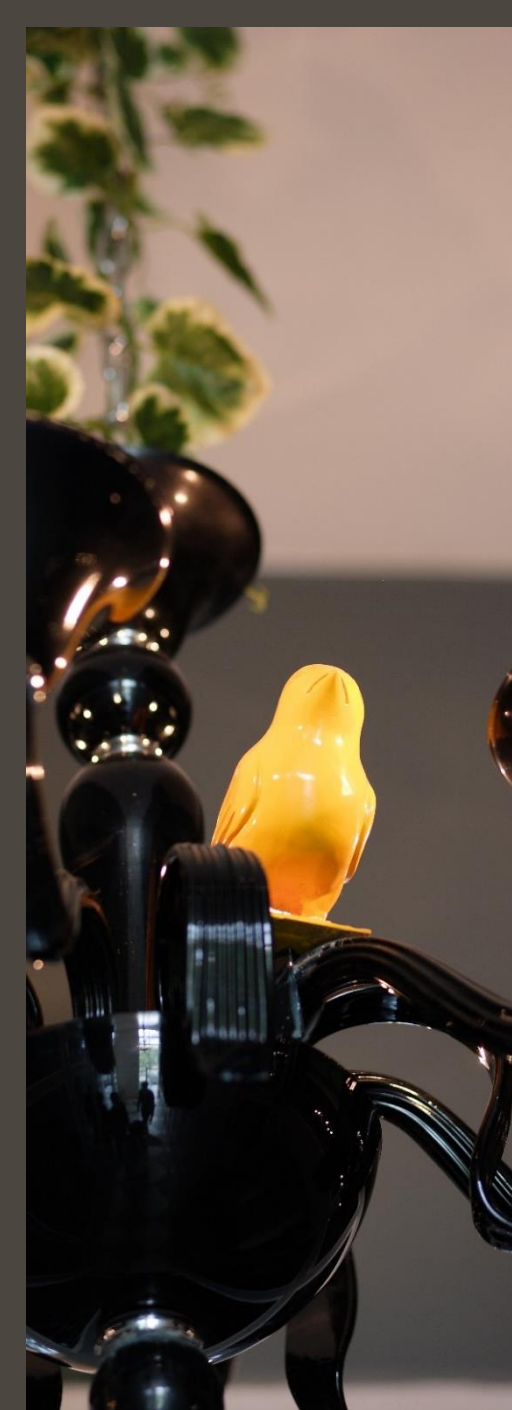
05/ 自助茶饮吧 Candy Cart

免费提供三种饮品,两款休闲小食。

满满的能量注入, 给您带去片刻轻松时光。

Three kinds of drinks and two kinds of snacks for free. Give you full of energy and a moment of relaxation.





DORSETT
SHANGHAI
上海帝盛酒店

Stay Vibrant

上海帝盛酒店荣获奖项

ACCOLADES FOR DORSETT SHANGHAI



帝盛酒店集团

ABOUT DORSETT HOSPITALITY INTERNATIONAL

DORSETT
SHANGHAI
上海帝盛酒店

帝盛酒店集团的总部设于香港。帝盛酒店集团由一支热诚敬业的管理团队领航，并且发展迅速。

集团目前拥有及管理分别位于香港、中国内地、马来西亚、新加坡和英国的酒店；并在马来西亚、英国和澳大利亚继续快速扩张和发展。

帝盛酒店集团全资拥有及管理四个酒店品牌，包括「帝盛酒店及度假村系列」、「Dao by Dorsett」、「d.Collection」及「丝丽酒店系列」。

详情请浏览：www.dorsett.com

Dorsett Hospitality International is an Asia-based hotel group headquartered in Hong Kong. Led by dedicated, passionate and experienced people with an excellent track record in managing and operating hotels, the group has grown from strength to strength over the years.

The group currently has operations in Hong Kong, China, Malaysia, Singapore and the United Kingdom; and continues to rapidly expand and grow with more hotel openings in Malaysia, the United Kingdom and Australia.

Dorsett Hospitality International owns and manages three brands - Dorsett Hotels & Resorts, Dao by Dorsett, d.Collection and Silka Hotels.

For more information on Dorsett Hospitality International, visit: www.dorsett.com.

Discover Our
Brands &
Hotels



DORSETT

dao

d. COLLECTION

Silka hotels

In Strategic
Partnership



酒店邮箱: info.shanghai@dorsetthotels.com

酒店网址: www.dorsetthotels.com/shanghai

帝盛酒店集团网址: www.dorsett.com

联系电话: [+86 21 3852 2222](tel:+862138522222)



Contact Us

联系我们

Dorsett Shanghai, 上海帝盛酒店

No. 800 Hua Mu Road, Pudong New District, Shanghai, 201204 China

中国上海浦东新区花木路800号 邮编: 201204