



SOFITEL

SINGAPORE CITY CENTRE



Introduction

- Flagship property
- Located right above Tanjong Pagar subway station
- Blend of French Art de Vivre and local sophistication
- 223 rooms and suites with 57% as lead in room
- Racines restaurant, symphony of French and local artistry
- Sip, savor and satisfy at 1864 bar with handcrafted cocktails





Room Catégories

Overview of Room Category



Luxury Room



Luxury Premium Room



Prestige Suite



Bathroom



Joaquim Suite Living Hall



Joaquim Suite



Joaquim Suite Bathroom

Luxury Room (38sqm)

Features and Inclusions

- 49-inch Smart TV
- Bose home entertainment system
- High speed internet access
- Bathroom with bathub and separate rain shower
- L'Occitane amenities
- Filtered water dispenser
- 24-hour Access to Sofitel Fitness featuring a cardio theatre and strength training area
- Access to outdoor infinity pool
- Virgin Active fitness kit





Luxury Premium Room (38sqm)

Additional Features and Inclusions

- Choice of city or heritage view
- Daily breakfast buffet
- One-time mini bar
- 15% savings on laundry
- 20% dining discount excluding in-room dining and alcoholic beverages
- Access to Virgin Active fitness club





Luxury Club Room (38sqm)

Additional Features and Inclusions

- Guaranteed high level from 18 to 20
- Daily breakfast buffet
- 25% Savings on laundry
- Access to Virgin Active fitness club
- Club Millesime benefits with breakfast and light dinner including all-day snacks, evening cocktails and canapes
- Balmain amenities

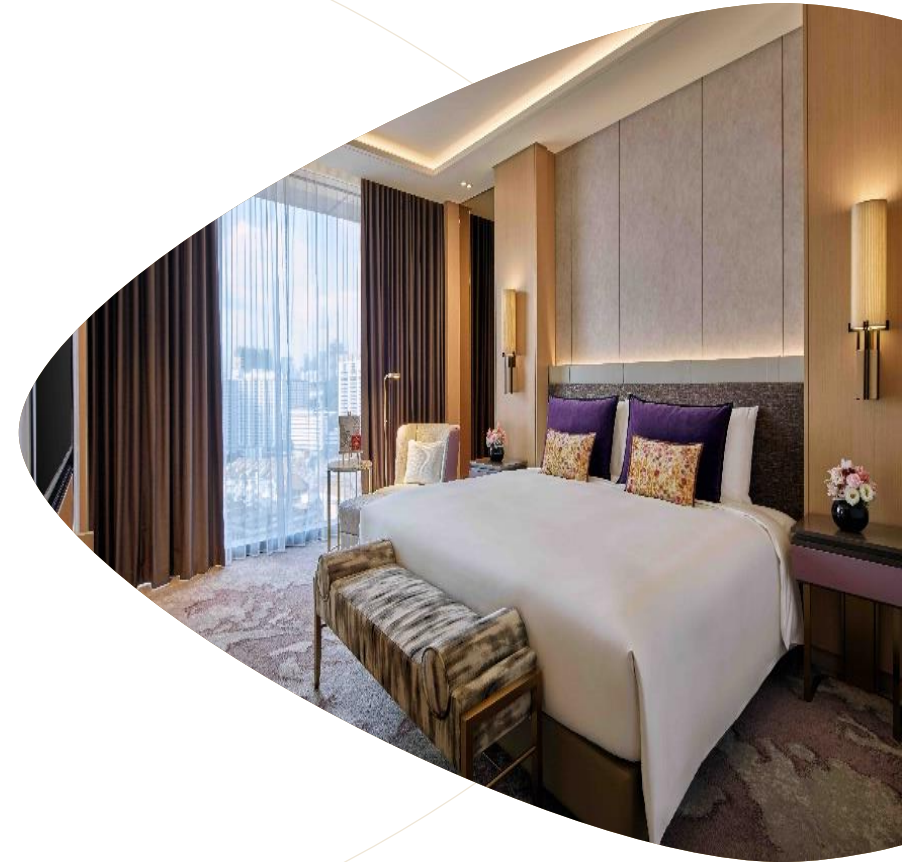


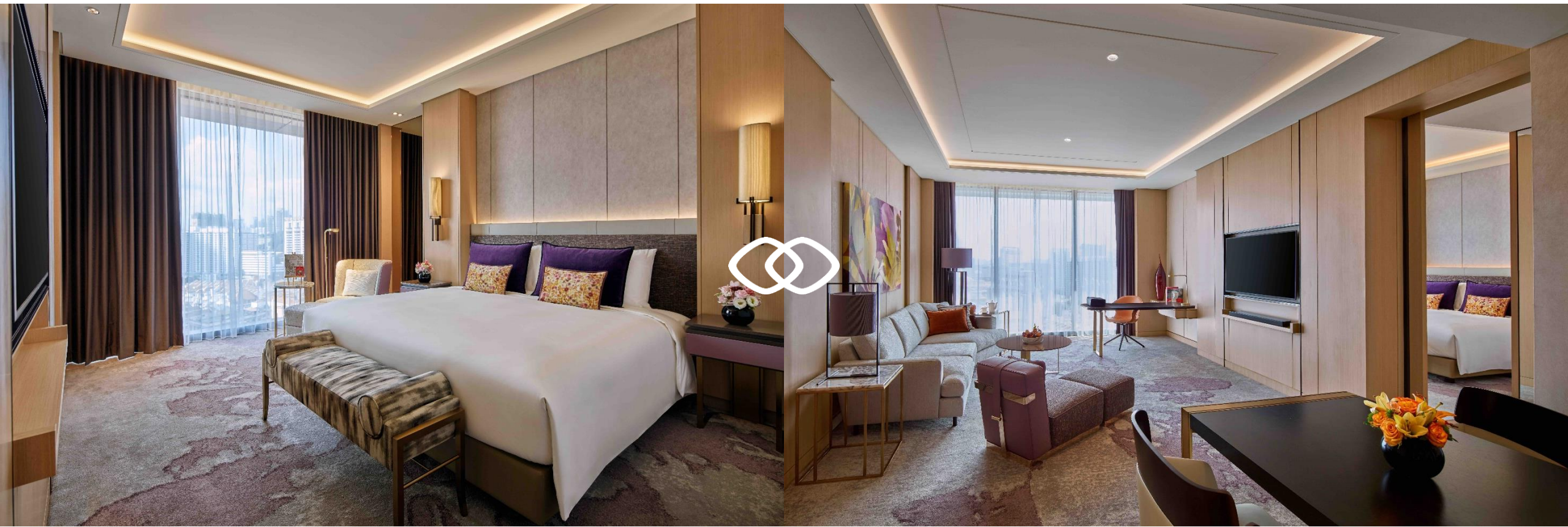


Prestige Suite (76sqm)

Additional Features and Inclusions

- Daily breakfast buffet
- 25% savings on laundry
- Access to Virgin Active fitness club
- Club Millesime benefits with breakfast and light dinner including all-day snacks, evening cocktails and canapes
- Balmain amenities
- Wells water dispenser

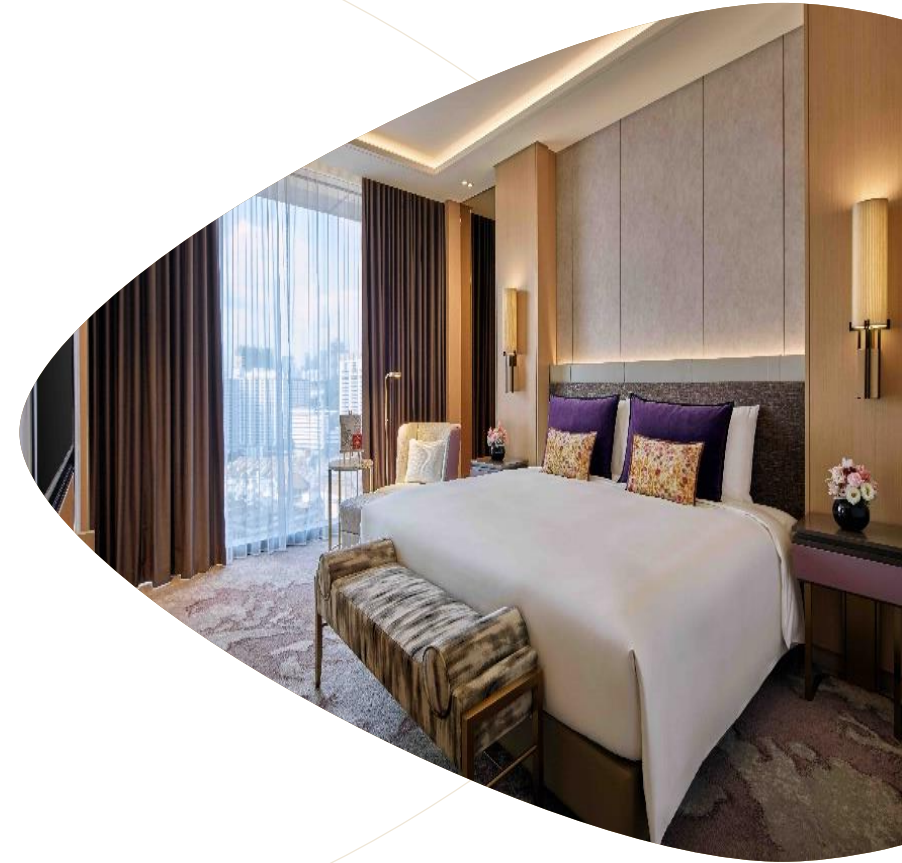


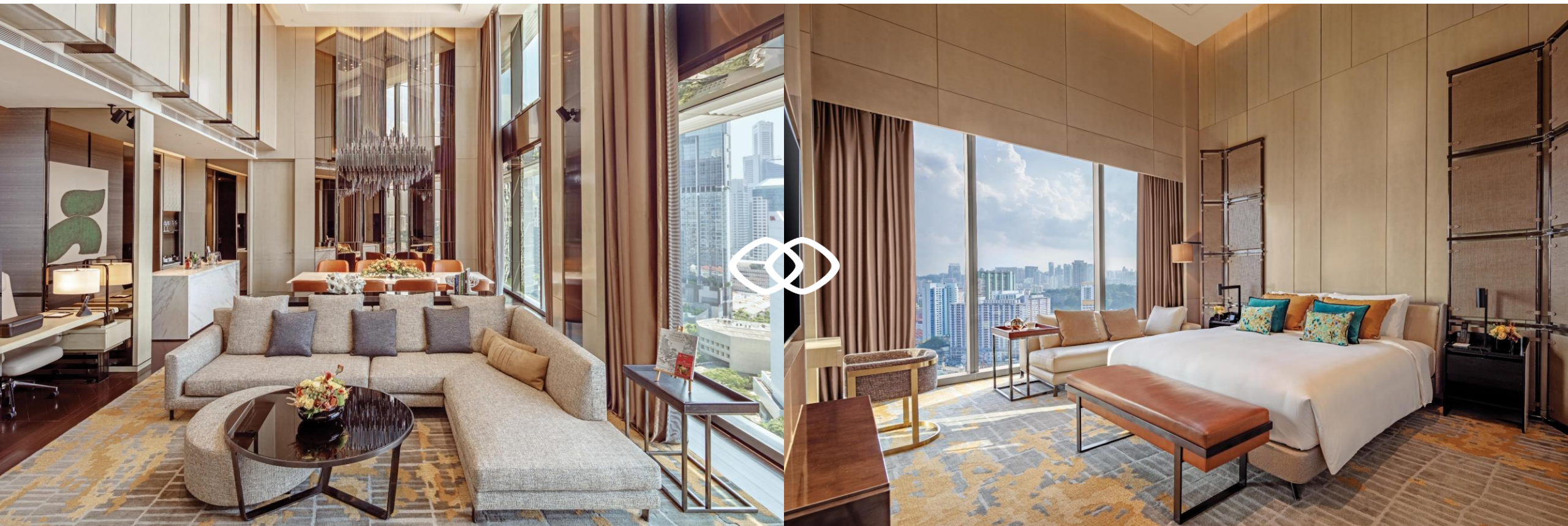


Joaquim Suite (146sqm)

Additional Features and Inclusions

- Daily breakfast buffet
- 25% savings on laundry
- Access to Virgin Active fitness club
- Club Millesime benefits with breakfast and light dinner including all-day snacks, evening cocktails and canapes
- Balmain amenities
- Wells water dispenser





Club Millésime

Sofitel's global interpretation for club lounges, Club Millésime is elegant and exclusive; with outstanding service to meet the most discerning guest's every need.

- All-day refreshments and snacks
- Complimentary breakfast from 7:00am to 10:30am
- Apero Chic (evening cocktails) from 5:30pm to 7:30pm



02



Offerings and Facilities



Dining Expérience

Racines

Indulge in a plethora of French gastronomy and elevated Asian classics at Racines. Menu highlights include Steak Frites, Black Cod, Sambal Seafood and Hokkien Mee.

Breakfast: 06:30am to 10:30am

Lunch: 12pm to 3pm

Dinner: 5:30pm to 10pm

1864

Named after Tanjong Pagar Dock Company, 1864 pays tribute to the beginning of the district's evolution from a fishing village to a prosperous hub port.

Opening Hours: 8am to 10:30pm

Afternoon Tea: 2pm to 5pm

Racines and 1864





Fitness and Well-Being

Sofitel Fitness

- Round the clock access
- State-of-the-art
- Technogym equipment

Outdoor Infinity Pool

- 30 metres long and 1.2 metres deep
- Opens from 7am to 9pm

Virgin Active Fitness Club

- Large gym with salt, ice and steam rooms
- Group classes

Sofitel Fitness and Virgin Active

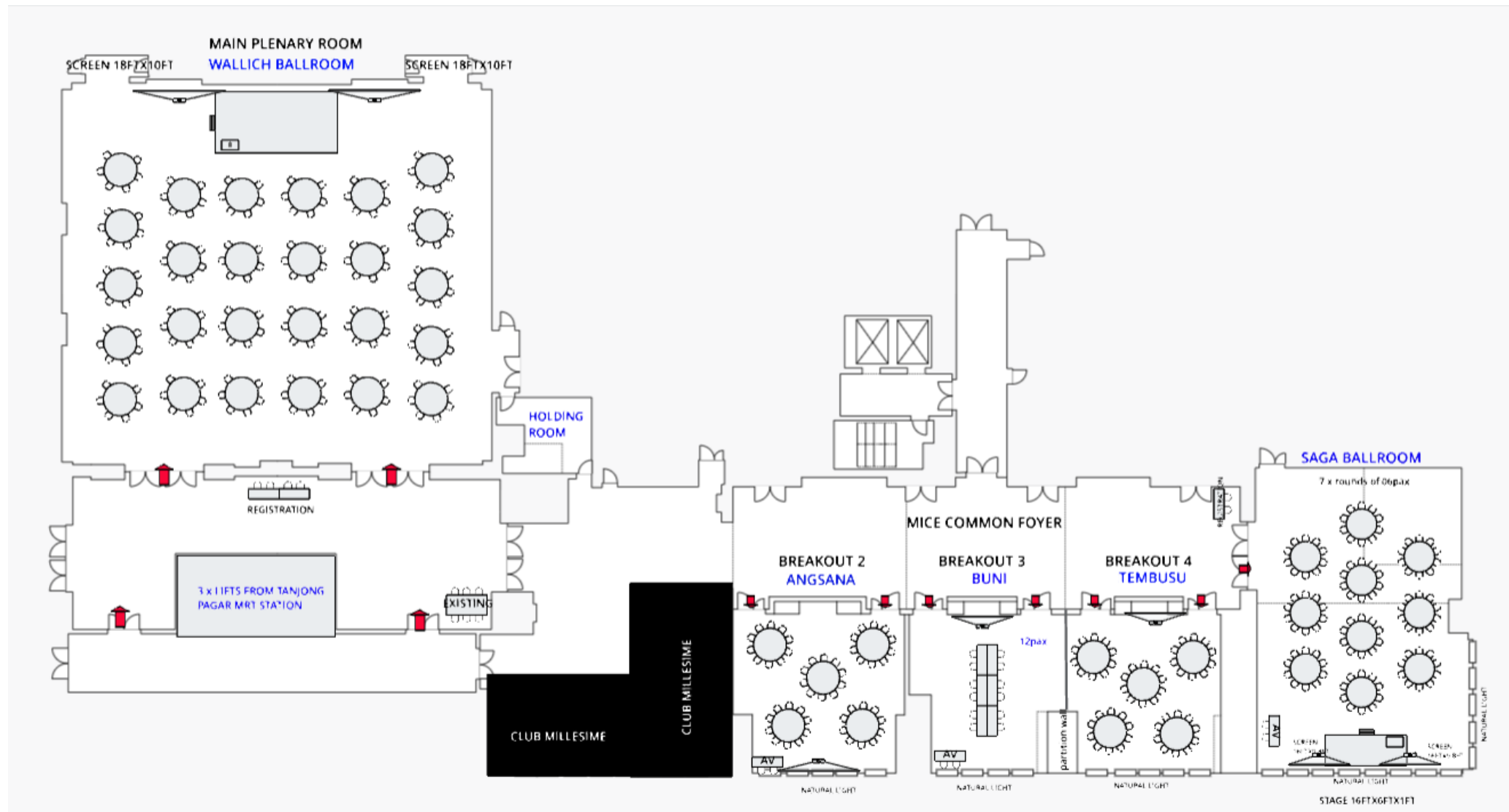






The Ensemble Collection

Sample Floorplan



The Ensemble Collection



19,500sqft Across
9 Flexible Venues

Sheltered Access to
Tanjong Pagar Subway
Station



Natural Daylight with
Floor-to-ceiling Windows

State-of-the-art
Facilities

Wallich Ballroom (600sqm)

Features:

- Named after Nathaniel Wallich, founder of Singapore Botanical Gardens
- Exclusive ballroom foyer for private events
- Bohemian Sky Crystal light fixture and skyfold partition
- Can be divided into two smaller ballrooms **Wallich I** and **Wallich II**
- Features a VIP room
- 42ft mega screen with a 12,000 ANSI lumens projector
- Up to 32 tables in banquet style and 600 guests for cocktail reception



Wallich Private Foyer



Wallich Ballroom



Saga Ballroom (228sqm)

Features:

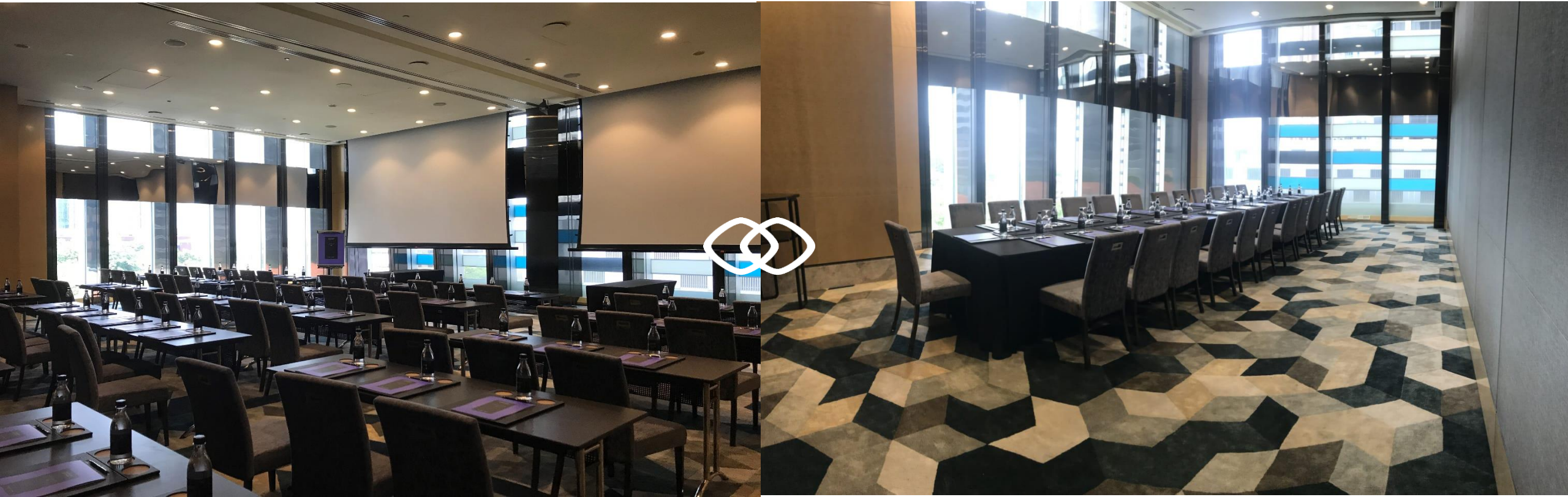
- Multi-faceted venue with and inspiring cityscape perfect for business and social functions
- Natural daylight with floor-to-ceiling windows
- Up to 120 persons in round seating and 140 persons for standing reception
- Can be divided into three elegant function rooms – Kapur, Ketapang and Saga



Saga Ballroom



Kapur and Ketapang



Angsana (97sqm)

Features:

- Named after heritage tree that can be found throughout Singapore
- High ceiling with natural daylight
- Can accommodate 60 persons in cocktail setting, 40 persons in theatre style, and 40 persons for a seated banquet
- Ceiling height of 4.8m



Angsana



Buni (90sqm)

Features:

- Named after the tree that is known to produce fruits which are used to make jam, jellies and wines
- High ceiling with natural daylight
- Can sit up to 40 persons in theatre style, and 40 persons in banquet seating
- Can be combined with Tembusu to form a bigger space
- Ceiling height of 4.8m



Tembusu (90sqm)

Features:

- Named after a tall tree with unique perpendicular branching and fragrant evening blossoms
- High ceiling with natural daylight
- Can sit up to 40 persons in theatre style, and 40 persons in banquet seating
- Can be combined with Buni to form a bigger space
- Ceiling height of 4.8m



Buni and Tembusu



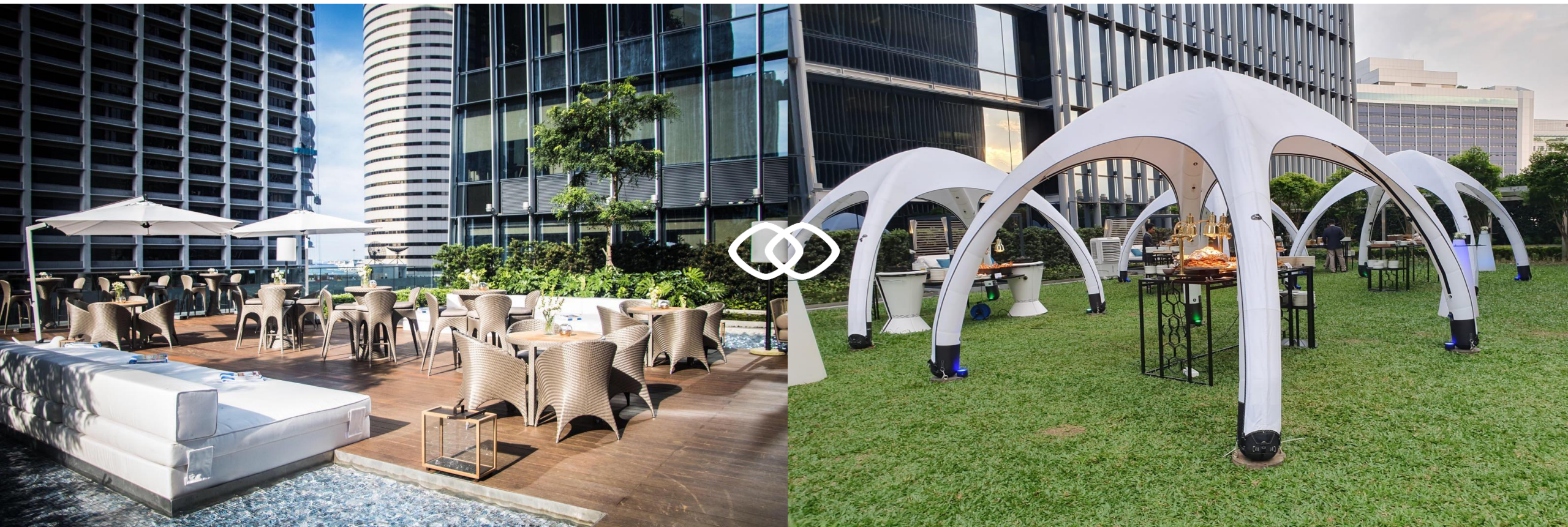
The Lawn

Features:

- Al fresco venue
- Accompanied by breezes or starry night skies
- Suitable for morning yogas, evening cocktails and solemnizations
- Can accommodate up to 140 persons standing



The Lawn





*Sofitel Singapore
City Centre x
Collaborations*

SOFITEL COLLABORATIONS

CELEBRATING LOCAL ILLUSTRATOR TIFFANY LOVAGE AND PHOTOGRAPHER JOHN HENG THROUGH "A VOYAGE THROUGH THE MARITIME SILK ROAD AT 1864"



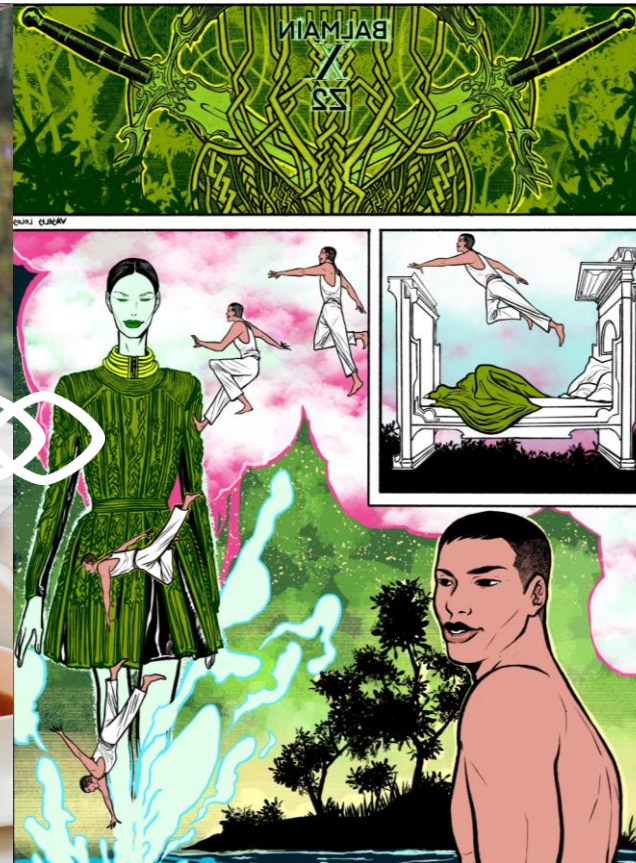
A VOYAGE THROUGH THE MARITIME SILK ROAD AT 1864



A VOYAGE THROUGH THE MARITIME SILK ROAD AT 1864



SOFITEL X BALMAIN



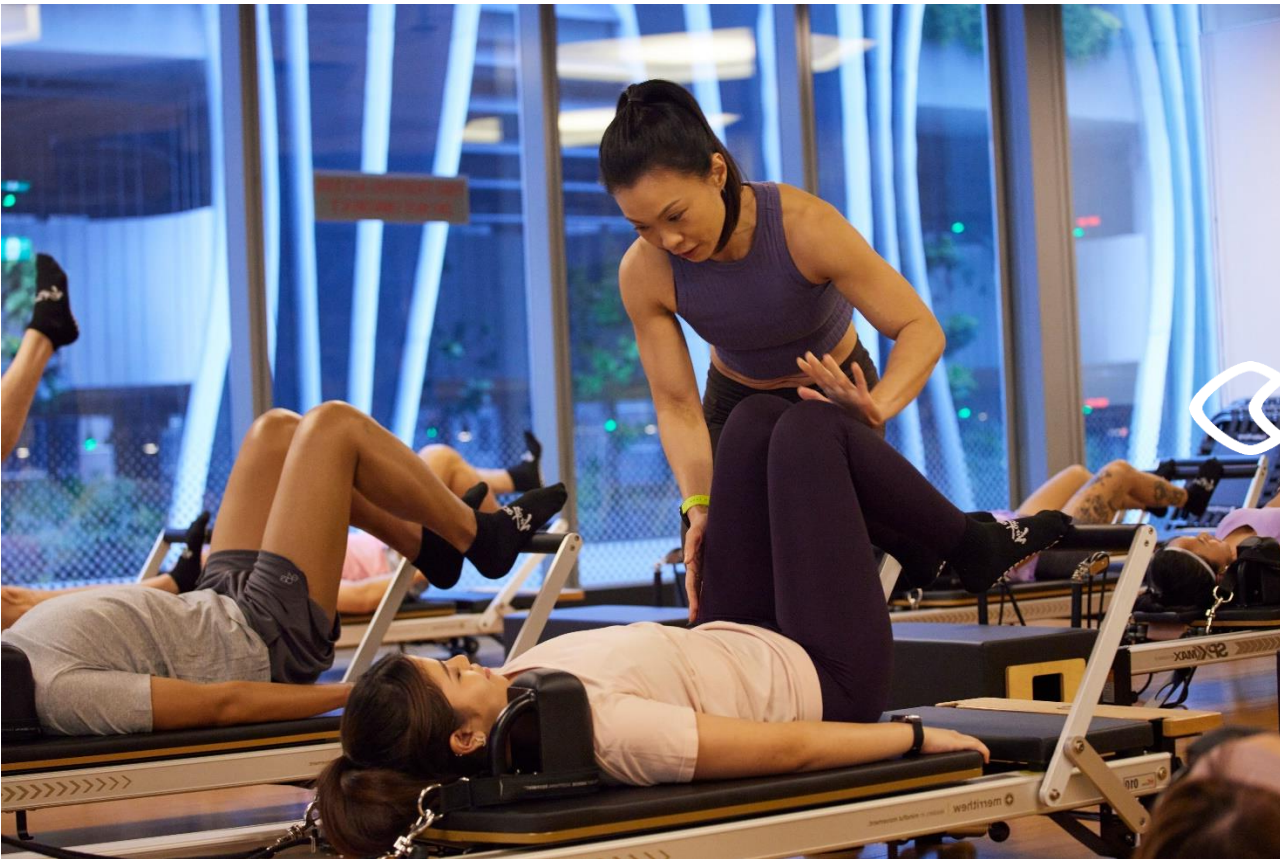
SOFITEL X VOGUE



SOFITEL X SULWAHSEO



SOFITEL X VIRGIN ACTIVE WELLNESS PROGRAM





Sustainability

SUSTAINABILITY



Large-sized Bath Amenities



Tetra Pak Water &
BRITA Mind Carafe Filtered Water



Filtered Water





Discovering Singapore

ARRIVING AT SINGAPORE CHANGI AIRPORT



- Voted World Best Airport 2023 by Aviation Ranking Website, Skytrax
- 30 minutes drive by car to Maison Sofitel Singapore City Centre
 - Click [here](#) for directions to Sofitel Singapore City Centre.

KEY ATTRACTIONS



Merlion Park



Gardens by the Bay



ArtScience Museum



Chinatown



Keong Saik



Sentosa

ART AROUND TANJONG PAGAR

CELEBRATING LOCAL ART IN THE HOTEL'S NEIGHBOURHOOD,
MAP HAND-DRAWN BY LOCAL ARTIST YIP YEW CHONG



ART AROUND TANJONG PAGAR



LOCAL DELICACIES AROUND THE HOTEL IN TANJONG PAGAR



Chicken Rice



Chicken Biryani



Ondeh Ondeh



Rojak



Chilli Crab



Half-boiled Eggs and Kaya Toast

COMMUNITY AROUND TANJONG PAGAR

