



AUCKLAND
CONVENTIONS
venues & events

OUR VENUES

NEW ZEALAND'S
LARGEST PORTFOLIO
OF ICONIC VENUES

CONTENTS

| | |
|----|-----------------------------------|
| 1 | HAERE MAI & WELCOME |
| 2 | AOTEA CENTRE |
| 4 | AUCKLAND ART GALLERY TOI O TĀMAKI |
| 6 | AUCKLAND TOWN HALL |
| 8 | AUCKLAND ZOO |
| 10 | BRUCE MASON CENTRE |
| 12 | GO MEDIA STADIUM |
| 14 | MOTAT |
| 16 | NORTH HARBOUR STADIUM |
| 18 | SHED 10 |
| 20 | THE CIVIC |
| 22 | THE CLOUD |
| 24 | VIADUCT EVENTS CENTRE |
| 26 | VENUE LOCATION MAPS |
| 28 | OUR SERVICES |

Haere mai

WELCOME

TO AUCKLAND CONVENTIONS, VENUES & EVENTS

As custodians of New Zealand's largest portfolio of iconic venues, we are proud to offer a range of unique world-class venues for extraordinary events in Auckland.

Facilitating and delivering exceptional events is our passion. Whether your meeting, conference, exhibition, gala dinner or awards ceremony is for 50 or 2,000 people, choose from more than sixty versatile spaces to suit any occasion.

With a specialised and dedicated team, every detail is looked after with care to ensure the seamless delivery of each event.

AOTEA CENTRE | AOTEA - TE POKAPŪ

AUCKLAND
CONVENTIONS
venues & events



A FLEXIBLE MULTI-PURPOSE CONVENTION CENTRE

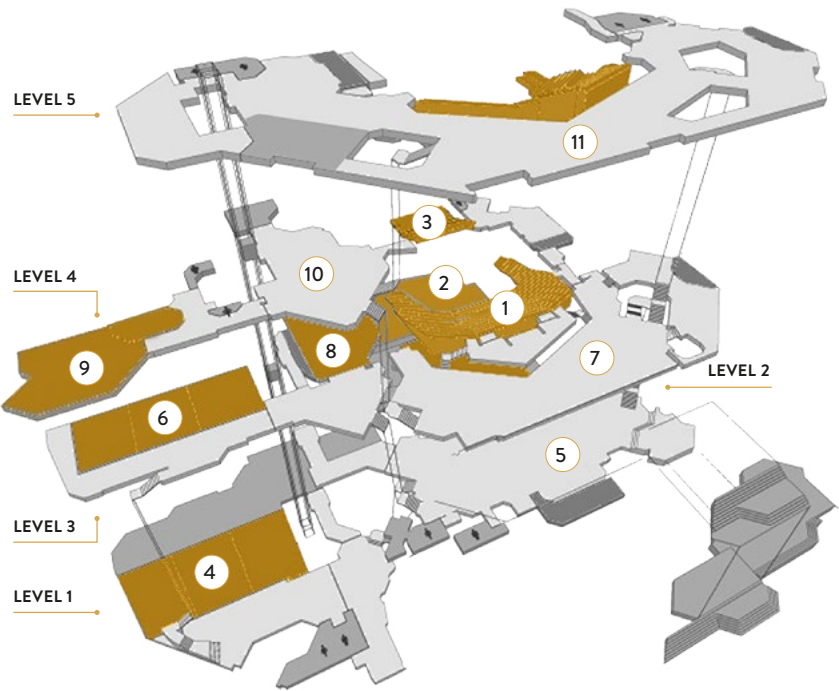
Situated in the heart of Auckland’s central business district and creative hub, is the Aotea Centre - a leading, purpose-built performing arts and convention centre. Located a short walk from hotels, entertainment, shopping, dining and a major transport hub and educational institutions.

With multiple function rooms and spaces, it is the ideal location for conferences, exhibitions, award ceremonies, cocktail parties and gala dinners.

FEATURES

- Conveniently located on Queen Street
- Auditorium seating for over 2,000
- Flexible spaces to suit all event types
- Multiple breakout rooms
- Building boasts cutting edge technology
- Award winning catering providers
- Close proximity to The Civic, Auckland Town Hall, Aotea Square and Herald Theatre
- On-site car parking facilities
- Close to major transport routes

Discover **Aotea Centre** here.



1. Kiri Te Kanawa Theatre



4. Hunua Rooms



6. Waitakere Rooms

Capacity Chart

| ROOMS | HEIGHT m | AREA m ² | THEATRE | CLASSROOM | U-SHAPE | CABARET | BANQUET | COCKTAIL | EXHIBITION |
|--|----------|---------------------|---------|-----------|---------|---------|---------|----------|------------|
| Kiri Te Kanawa Theatre 1 | — | — | 2139 | — | — | — | — | — | — |
| Kiri Te Kanawa Stage 2 | — | — | — | — | — | — | 160 | 300 | — |
| Herald Theatre 3 | — | — | 186 | — | — | — | — | — | — |
| Hunua Rooms including foyers Level 1 | 4.35m | 909m ² | 778 | 376 | — | 464 | 580 | 900 | 32 |
| Hunua Rooms excluding foyers 4 | 4.35m | 571m ² | 528 | 284 | 80 | 304 | 380 | 570 | — |
| Hunua 1 | 4.35m | 204m ² | 186 | 92 | 44 | 112 | 120 | 200 | — |
| Hunua 2 | 4.35m | 187m ² | 185 | 88 | 40 | 104 | 120 | 180 | — |
| Hunua 3 | 4.35m | 180m ² | 169 | 88 | 40 | 96 | 110 | 180 | — |
| Stalls Foyer Level 2 5 | 2.97m | 800m ² | — | — | — | — | — | 800 | 20 |
| Waitakere Rooms including foyers Level 3 | 2.70m | 518m ² | 440 | 264 | — | 280 | 330 | 500 | 18 |
| Waitakere Rooms excluding foyers 6 | 2.70m | 368m ² | 322 | 196 | 64 | 200 | 240 | 370 | — |
| Waitakere 1 | 2.70m | 137m ² | 128 | 60 | 36 | 72 | 90 | 140 | — |
| Waitakere 2 | 2.70m | 125m ² | 105 | 56 | 32 | 56 | 70 | 125 | — |
| Waitakere 3 | 2.70m | 106m ² | 97 | 40 | 32 | 48 | 60 | 100 | — |
| Circle Foyer Level 3 7 | 4.97m | 460m ² | — | — | — | — | — | 460 | 22 |
| Limelight Rooms Level 3 8 | 2.50m | 318m ² | 180 | 108 | 48 | 120 | 150 | 300 | 10 |
| Limelight 1 | 2.50m | 125m ² | 84 | 60 | 32 | 56 | 70 | 125 | — |
| Limelight 2 | 2.50m | 193m ² | 126 | 64 | 40 | 80 | 100 | 190 | — |
| Waihorotiu 1 Level 4 9 | 2.68m | 180m ² | 100 | 60 | 36 | 80 | 90 | 180 | — |
| Waihorotiu 2 Level 4 | 2.40m | 40m ² | 25 | 20 | 16 | 16 | 20 | 40 | — |
| QBE Gallery Level 4 10 | 2.50m | 240m ² | — | — | — | — | — | 200 | 10 |
| Balcony Foyer Level 5 11 | 2.98m | 1100m ² | — | — | — | — | — | 1000 | 42 |

Please note: All capacities are guidelines only and are based on the maximum use of the space available for standard setups. They may be reduced by staging, technical equipment, dance floors, type of menu being served or entertainment.

AUCKLAND ART GALLERY TOI O TĀMAKI

AUCKLAND
CONVENTIONS
venues & events



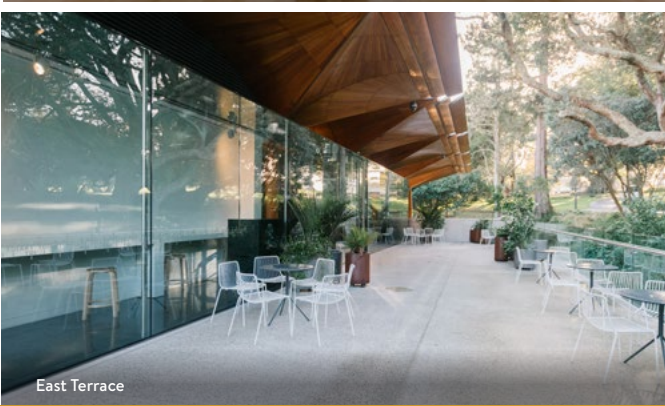
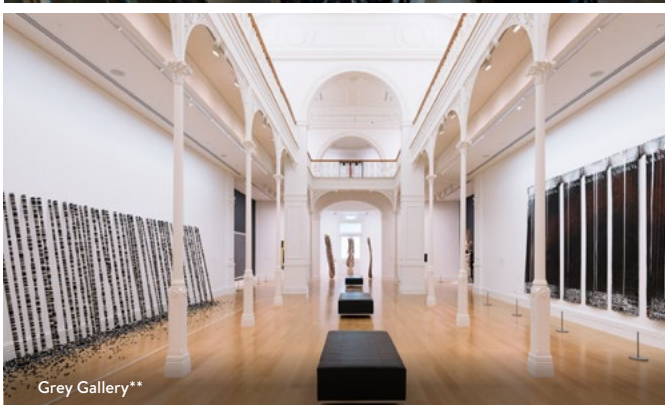
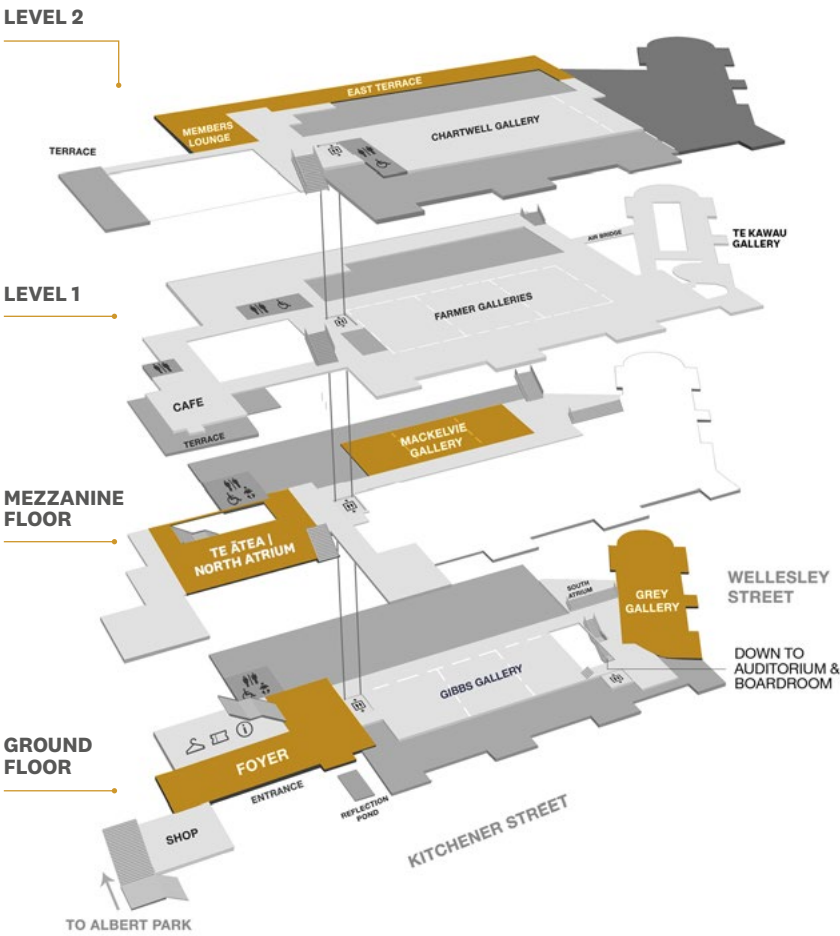
TRANSFORM YOUR EVENT INTO A MASTERPIECE

Combining modern and heritage architecture, Auckland Art Gallery Toi o Tāmaki is home to more than 18,000 works of art. Transform your gala dinner, cocktail function or auditorium presentation into a masterpiece at one of the city’s most awe-inspiring settings. Situated on the edge of Albert Park, this award-winning heritage building seamlessly merges historical features with vibrant contemporary spaces, creating a unique and enchanting atmosphere for your event.

FEATURES

- Located in the heart of Auckland city
- Celebrated mix of modern and heritage architecture
- Award winning catering providers
- Walking distance to a range of accommodation
- Perfect choice for weddings and corporate functions
- Paid parking facilities within walking distance
- Option to include exclusive viewings of selected exhibitions

Discover **Auckland Art Gallery Toi o Tāmaki** here.



Capacity Chart

| ROOMS | HEIGHT m | AREA m ² | THEATRE | BANQUET | COCKTAIL | BOARDROOM |
|-------------------------|----------|---------------------|---------|---------|----------|-----------|
| Te Ātea North Atrium* | Varied | 243m ² | 160 | 130 | 250 | - |
| Auditorium | Varied | - | 150 | - | - | - |
| Grey Gallery* | Varied | 220m ² | 80 | 80 | 120 | - |
| Mackelvie Gallery* | Varied | 270m ² | 105 | 110 | 120 | - |
| Boardroom | - | 50.4m ² | 30 | - | - | 16 |
| East Terrace* | - | 325m ² | - | - | 250 | - |

Please note: All capacities are guidelines only and are based on the maximum use of the space available for standard setups.

They may be reduced by staging, technical equipment, dance floors, type of menu being served or entertainment.

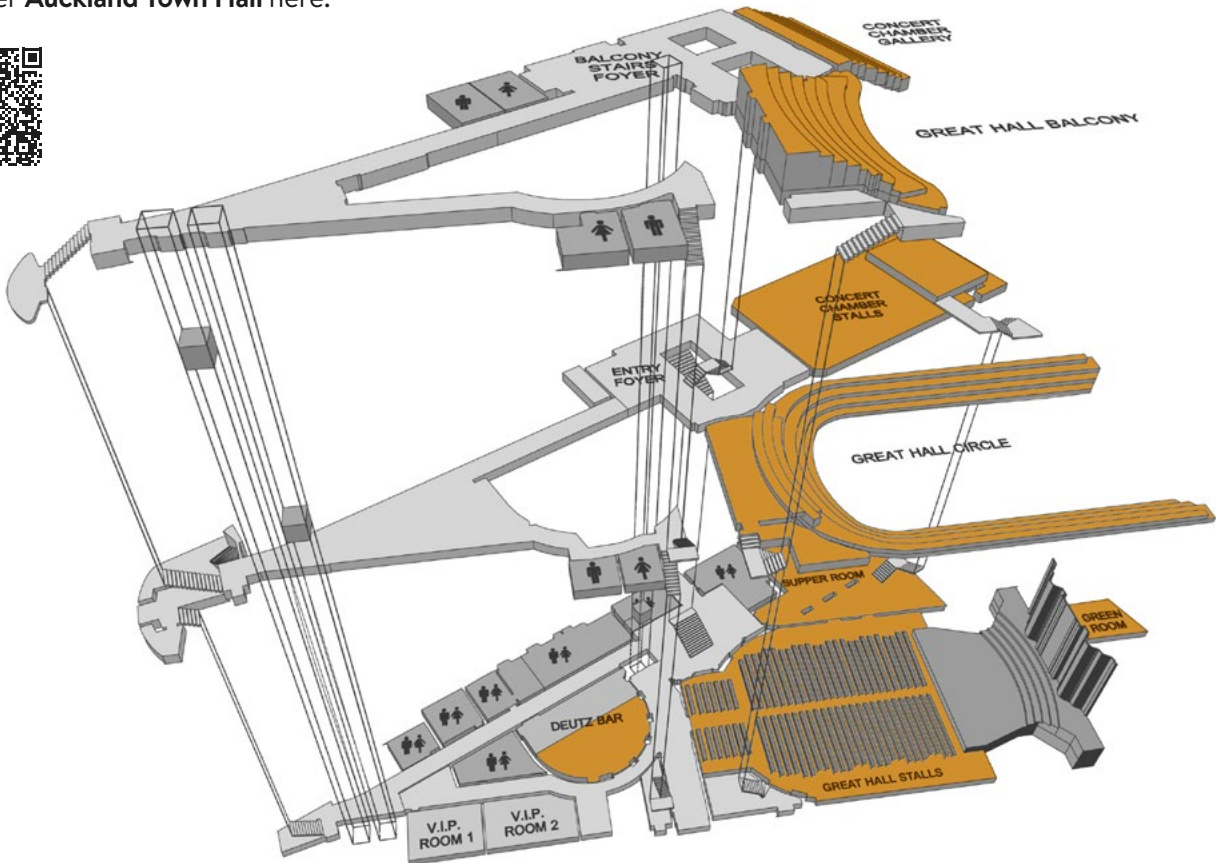
*Available for evening hire only.

** Taimoana | Coastlines: Art in Aotearoa, Auckland Art Gallery Toi o Tāmaki, 2024.

AUCKLAND TOWN HALL | HŌRO Ā-TĀONE O TĀMAKI MAKĀURAU

AUCKLAND
CONVENTIONS
venues & events

Discover **Auckland Town Hall** here.



LAVISH INTERIORS FOR ELEGANT EVENTS

As one of New Zealand’s most important heritage buildings, Auckland Town Hall is a stunning backdrop for any event with its attractive stained-glass windows, ornate plasterwork and spectacular chandeliers. Built in 1911 and home to New Zealand’s largest concert organ, this landmark building was restored in the 1990s with event use in mind.

FEATURES

- Significant heritage building
- Central Auckland City location
- Close proximity to Aotea Centre, Aotea Square and The Civic
- Stunning Edwardian Baroque design
- Renowned for excellent acoustics
- Theatre quality technical facilities on-site
- Perfect for gala dinners, exhibitions, cocktail functions, award ceremonies and school balls



Concert Chamber



Great Hall



Great Hall



Great Hall

Capacity Chart

| ROOMS | HEIGHT m | AREA m ² | THEATRE | CLASSROOM | CABARET | BANQUET | COCKTAIL | EXHIBITION |
|-----------------|----------|---------------------|---------|-----------|---------|---------|----------|------------|
| Great Hall | 16m | 550m ² | 1529 | 272 | 288 | 360 | 670 | 40 booths |
| Supper Room | 4.15m | 275m ² | 167 | — | — | — | 250 | — |
| Deutz Bar | 3.93m | 105m ² | — | — | — | — | 150 | — |
| Concert Chamber | 9.7m | 375m ² | 419 | 160 | 160 | 200 | 300 | 20 booths |
| Balcony Foyer | 5.3m | — | — | — | — | — | 200 | — |

Please note: All capacities are guidelines only and are based on the maximum use of the space available for standard setups. They may be reduced by staging, technical equipment, dance floors, type of menu being served or entertainment.

AUCKLAND ZOO | TE WHARE KARAREHE O TĀMAKI MAKĀURAU

AUCKLAND
CONVENTIONS
venues & events



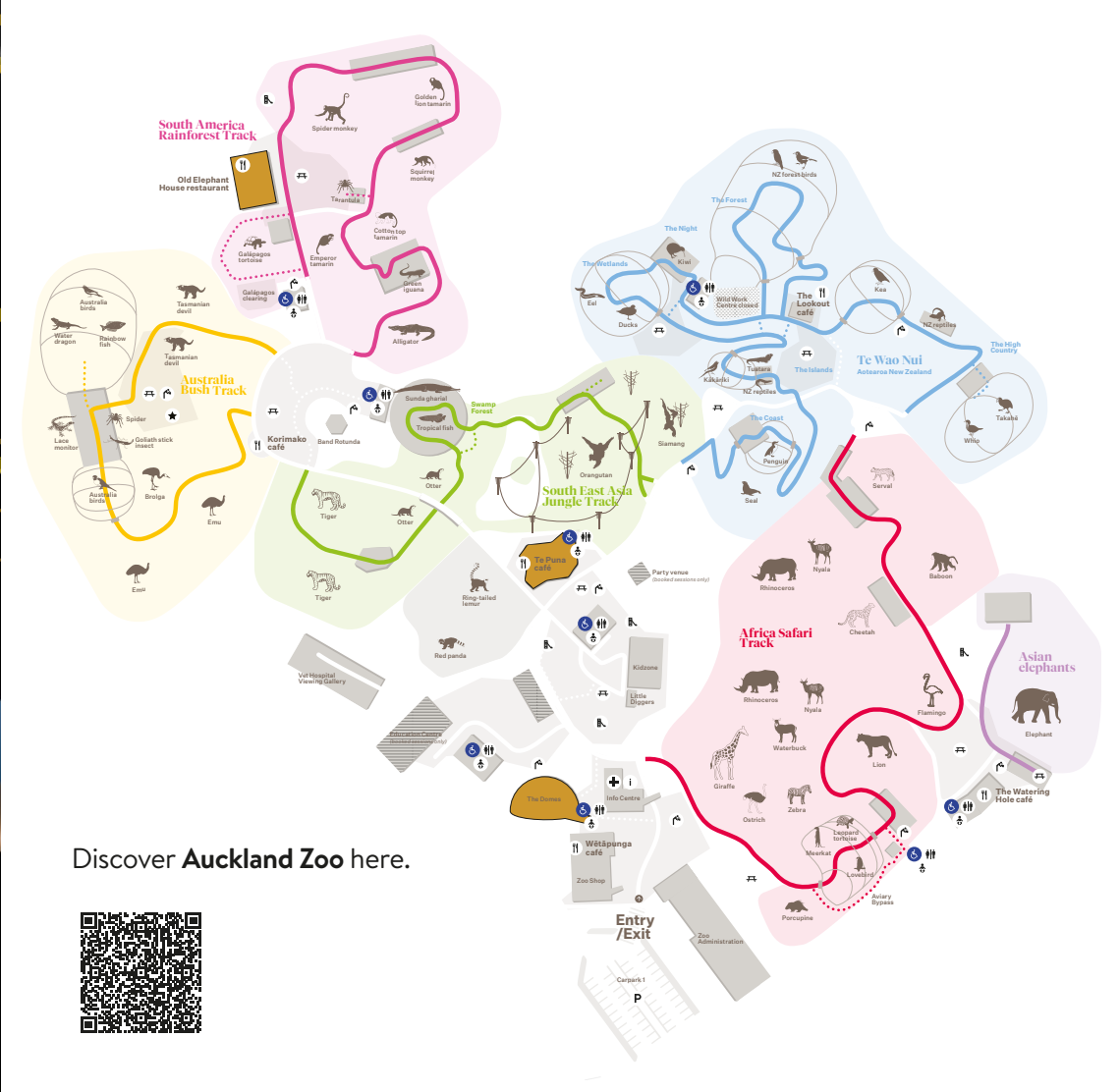
EXPERIENCE A VENUE LIKE NO OTHER

With Aotearoa New Zealand’s largest home of native and exotic wildlife as a backdrop, Auckland Zoo’s distinctive function spaces make for memorable events, cocktail functions, seated dinners, team building events and more.

All events booked at Auckland Zoo support the important wildlife conservation efforts through Auckland Zoo’s Conservation Fund.

FEATURES

- Access to explore the Zoo on the day of your event
- Distinctive and flexible spaces
- Located close to the motorway and Auckland CBD
- Available for day and evening bookings
- On-site parking available
- Award winning catering providers



Capacity Chart

| ROOMS | HEIGHT m | AREA m ² | THEATRE | CLASSROOM | CAFE | CABARET | BANQUET | COCKTAIL |
|------------------------------------|----------|---------------------|---------|-----------|------|---------|---------|----------|
| The Domes | Varied | 740m ² | 350 | — | — | 280 | 350 | 500 |
| Te Puna* | 3m | 80m ² | 150 | 130 | — | 120 | 150 | 250 |
| Old Elephant House with Courtyard* | — | 170m ² | — | — | 120 | — | — | 160 |
| Old Elephant House Courtyard** | — | 70m ² | 50 | 30 | 50 | — | 50 | 80 |
| Cotton Top Tamarin Shelter *** | — | Varied | 40 | — | — | — | — | 60 |

Please note: All capacities are guidelines only and are based on the maximum use of the space available for standard setups. They may be reduced by staging, technical equipment, dance floors, type of menu being served or entertainment.

* Available for evening hire only ** Available for day hire only ***Available for wedding ceremonies and pre-function cocktails for evening hire only

BRUCE MASON CENTRE

AUCKLAND
CONVENTIONS
venues & events



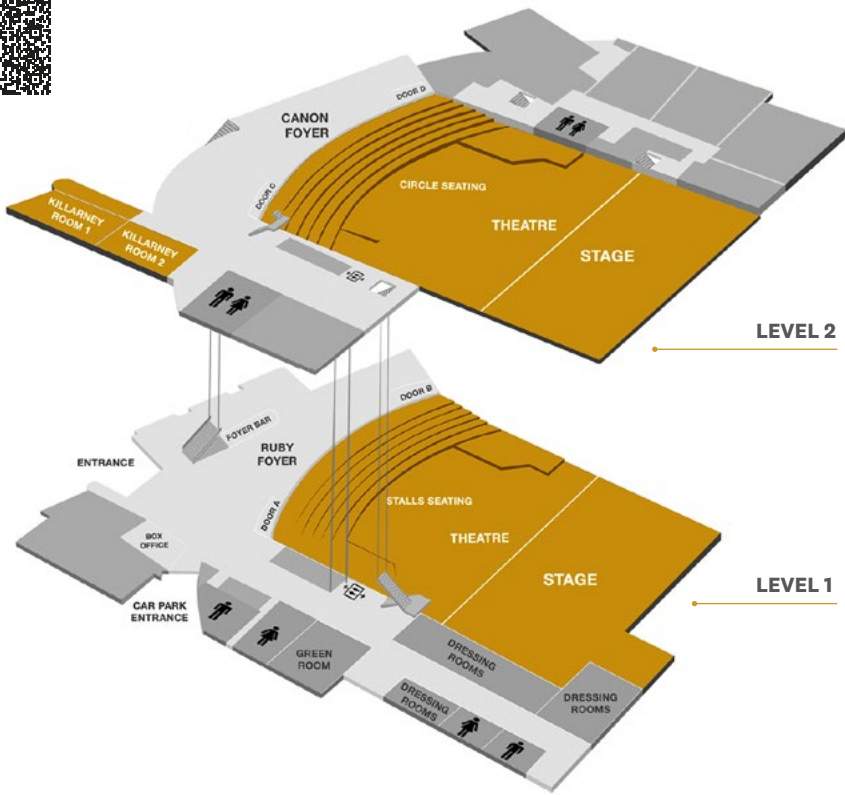
VERSATILE VENUE AT A TRANQUIL BEACHSIDE LOCATION

Conveniently located in central Takapuna, Bruce Mason Centre is a short walk from a selection of restaurants, shops , accommodation and the stunning Takapuna Beach.

With a theatre, break out rooms and two spacious foyers on offer, the venue can cater for conferences, cocktail evenings, product launches and flat-floor gala dinners in the theatre.

- FEATURES**
- Theatre with tiered seating
 - Theatre transforms for dramatic gala dinners
 - Tranquil beach side location
 - Escape the hustle and bustle of the city
 - Only 15 minutes from Auckland's city centre

Discover **Bruce Mason Centre** here.



Capacity Chart

| ROOMS | HEIGHT m | AREA m ² | THEATRE | CLASSROOM | U-SHAPE | CABARET | BANQUET | COCKTAIL | EXHIBITION |
|-------------------------|----------|---------------------|---------|-----------|---------|---------|---------|----------|------------|
| Theatre Stalls & Circle | — | — | 1070 | — | — | — | — | — | — |
| Flat Floor & Terraces | — | 1200m ² | — | — | — | — | 406 | 820 | — |
| Killarney Room 1 | 3m | 75m ² | 52 | 24 | 15 | 24 | 30 | 50 | 4 |
| Killarney Room 2 | 3m | 51m ² | 40 | 15 | 9 | 16 | 20 | 30 | 2 |
| Killarney Room 1 & 2 | 3m | 126m ² | 84 | 36 | — | 48 | 50 | 90 | 7 |
| Ruby Ormiston Foyer | — | 350m ² | — | — | — | — | — | 350 | 8 |
| Cannon Gallery | — | 200m ² | — | — | — | — | — | 150 | 6 |

Please note: All capacities are guidelines only and are based on the maximum use of the space available for standard setups. They may be reduced by staging, technical equipment, dance floors, type of menu being served or entertainment.

GO MEDIA STADIUM

AUCKLAND
CONVENTIONS
venues & events

Discover Go Media Stadium here.



A DISTINCTIVE BACKDROP FOR YOUR NEXT EVENT

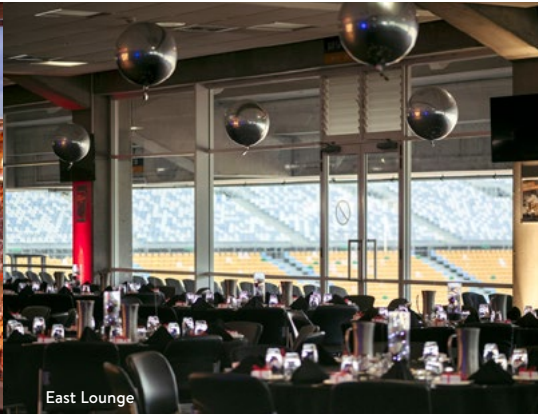
Renowned for its world-class concerts, sporting and athletic events, Go Media Stadium also offers flexible spaces for truly unique business and social events. Easily accessible from the motorway and a 15 minutes drive from Auckland's city centre, Go Media Stadium is a convenient option on the outskirts of Auckland City. Spaces within Go Media Stadium offer the perfect blank canvas for cocktail functions, gala dinners, conferences and more.

FEATURES

- Unique sporting atmosphere
- Impressive views over playing fields
- On-site parking facilities
- Close to major transport routes
- Plenty of natural light
- 3kms to Auckland Airport
- Flexible spaces to suit all event types
- Located in Penrose



Go Media Stadium



East Lounge



John Walker

Capacity Chart

| ROOMS | HEIGHT m | AREA m ² | THEATRE | CLASSROOM | CABARET | BANQUET | COCKTAIL | EXHIBITION |
|---|----------|---------------------|---------|-----------|---------|---------|----------|------------|
| Full East Lounge (East & South Lounges) | 3.5m | 1257m ² | 900 | 336 | 520 | 650 | 1000 | 87 booths |
| East Lounge | 3.5m | 945m ² | 700 | 240 | 400 | 480 | 700 | — |
| South Lounge | 3.5m | 312m ² | 200 | 84 | 160 | 200 | 300 | — |
| John Walker Lounge | 2.7m | 311m ² | 250 | 60 | 152 | 190 | 250 | — |

Please note: All capacities are guidelines only and are based on the maximum use of the space available for standard setups. They may be reduced by staging, technical equipment, dance floors, type of menu being served or entertainment.

MOTAT AVIATION HALL

AUCKLAND
CONVENTIONS
venues & events

Discover MOTAT's Aviation Hall here.



THE ULTIMATE BACKDROP FOR YOUR EVENT

Taiwhanga Rererangi - Aviation Hall at MOTAT is home to one of the world's most unique aircraft collections. This stunning venue is located at Te Wai Ōrea Western Springs and can host cocktail events, award ceremonies, gala dinners and more. Welcome your guests under the nose of the Avro Lancaster Bomber, dine beneath the Solent and Sunderland flying boats and finish the evening taking in the spectacular view of the aircraft collection.

- FEATURES**
- Houses a significant aircraft collection
 - Distinctive and flexible space
 - Award winning catering providers
 - Available for evening hire only
 - On-site parking available
 - Located close to the motorway and Auckland CBD



Capacity Chart

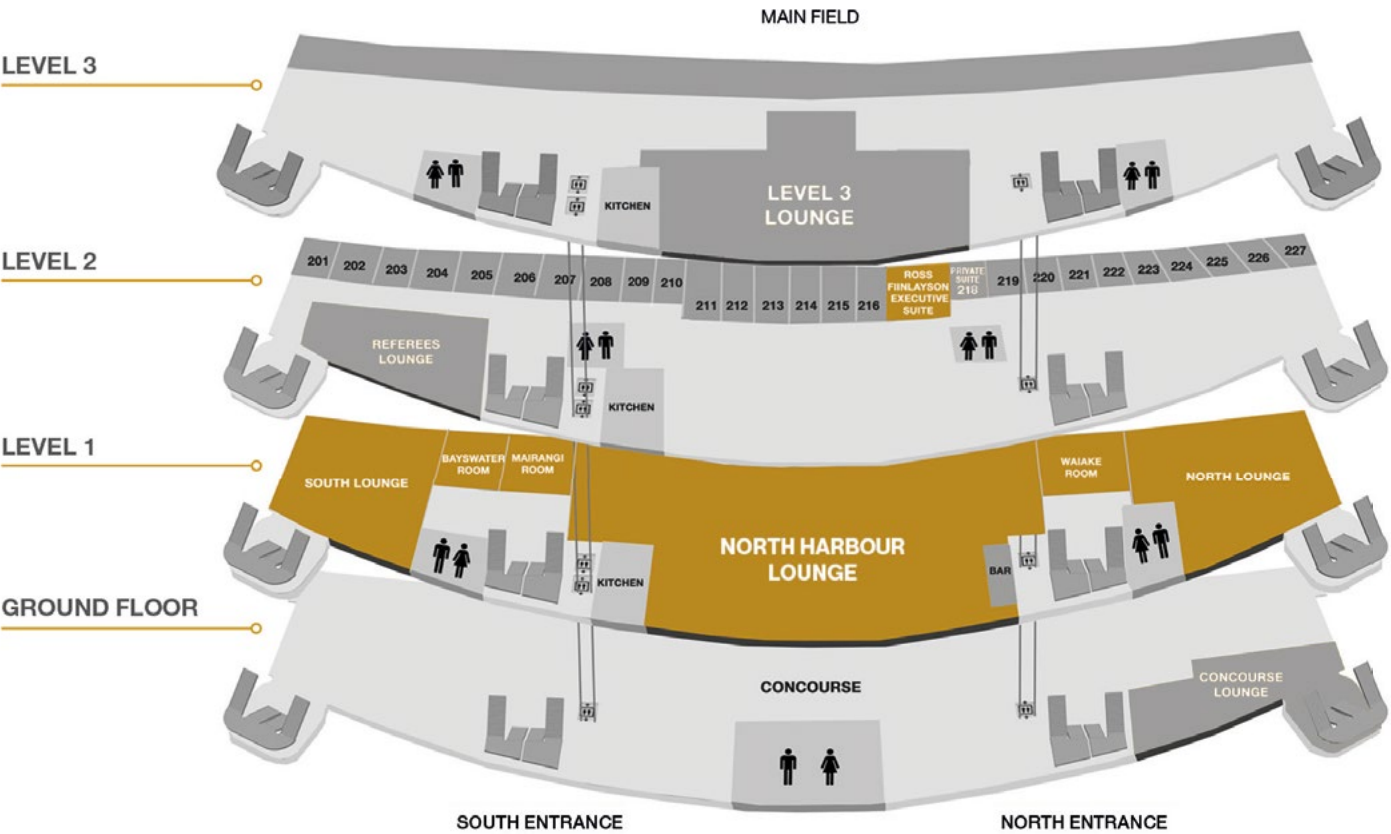
| ROOMS | HEIGHT m | AREA m ² | BANQUET | COCKTAIL |
|---------------|----------|---------------------|---------|----------|
| Aviation Hall | Varied | 425m ² | 350 | 500 |

Please note: All capacities are guidelines only and are based on the maximum use of the space available for standard setups. They may be reduced by staging, technical equipment, dance floors, type of menu being served or entertainment.

NORTH HARBOUR STADIUM

AUCKLAND
CONVENTIONS
venues & events

Discover North Harbour Stadium here.



A VERSATILE VENUE FOR YOUR NEXT EVENT

Located in Albany on Auckland's North Shore, North Harbour Stadium seamlessly merges sporting excellence with unparalleled event hosting capabilities. It offers seven versatile function spaces spread across two levels. From intimate private suites to expansive rooms, it caters to events of all sizes and configurations. With convenient motorway access and ample on-site parking, it boasts convenience and accessibility.

- FEATURES**
- 7 versatile spaces
 - Floor to ceiling glass windows
 - Views across the main stadium field
 - Soundproof room dividers available on Level 1
 - Cocktail function capacity for 1,000
 - 1,200 free car parks available on-site
 - Close to major transport routes
 - Located in Albany, 30 mins from Auckland's CBD



Capacity Chart

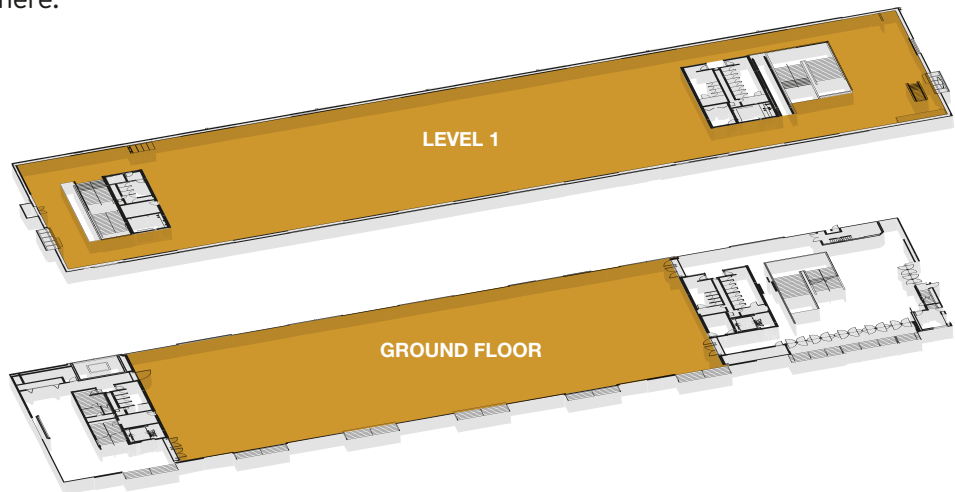
| ROOMS | HEIGHT m | AREA m ² | THEATRE | CLASSROOM | U-SHAPE | CABARET | BANQUET | COCKTAIL | EXHIBITION |
|--|----------|---------------------|---------|-----------|---------|---------|---------|----------|------------|
| North Harbour Lounge Level 1 | 2.65m | 974m ² | 697 | 207 | — | 368 | 500 | 1000 | 98 |
| North Lounge Level 1 | 2.65m | 327m ² | 240 | 84 | 34 | 152 | 190 | 350 | 23 |
| South Lounge Level 1 | 2.65m | 248m ² | 180 | 92 | 32 | 112 | 150 | 300 | 17 |
| Bayswater & Mairangi Room Level 1 | 2.65m | 135m ² | 100 | 40 | 30 | 64 | 80 | 120 | 10 |
| Bayswater Room Level 1 | 2.65m | 68m ² | 50 | 16 | 18 | 32 | 40 | 75 | 6 |
| Mairangi Room Level 1 | 2.65m | 68m ² | 50 | 16 | 18 | 32 | 40 | 75 | 6 |
| Waiake Room Level 1 | 2.65m | 68m ² | 50 | 16 | 18 | 32 | 40 | 75 | 6 |
| Ross Finlayson Executive Suite Level 2 | 2.32m | 55m ² | — | — | 14 | — | 30 | 40 | — |

Please note: All capacities are guidelines only and are based on the maximum use of the space available for standard setups. They may be reduced by staging, technical equipment, dance floors, type of menu being served or entertainment.

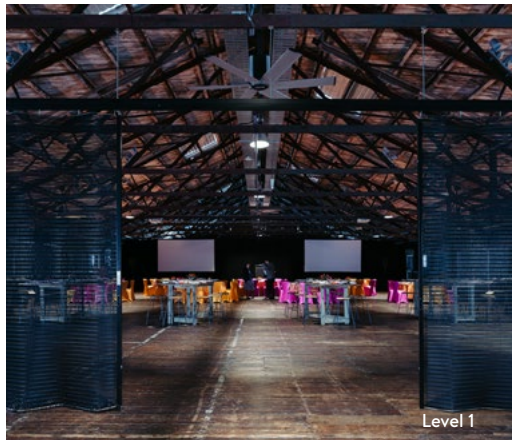
SHED 10

AUCKLAND
CONVENTIONS
venues & events

Discover Shed 10 here.



Exterior



Level 1



Ground Floor Foyer

A BLANK CANVAS TO MAKE YOUR OWN

Shed 10 is a 100-year-old cargo shed full of character and historical significance. Built in 1910, Shed 10 is the only remaining original building on Auckland's Queens Wharf. This heritage-listed building has undergone a thoughtful restoration, providing facilities for glamorous gala dinners and cocktail functions.

FEATURES

- Located on Queens Wharf on the Auckland waterfront
- Uninterrupted views of the Waitematā Harbour
- 4,400m² over two levels
- Multipurpose event venue
- Walking distance from public transport hubs and retail precincts
- Close to multiple hotels and entertainment options



Ground Floor

Capacity Chart

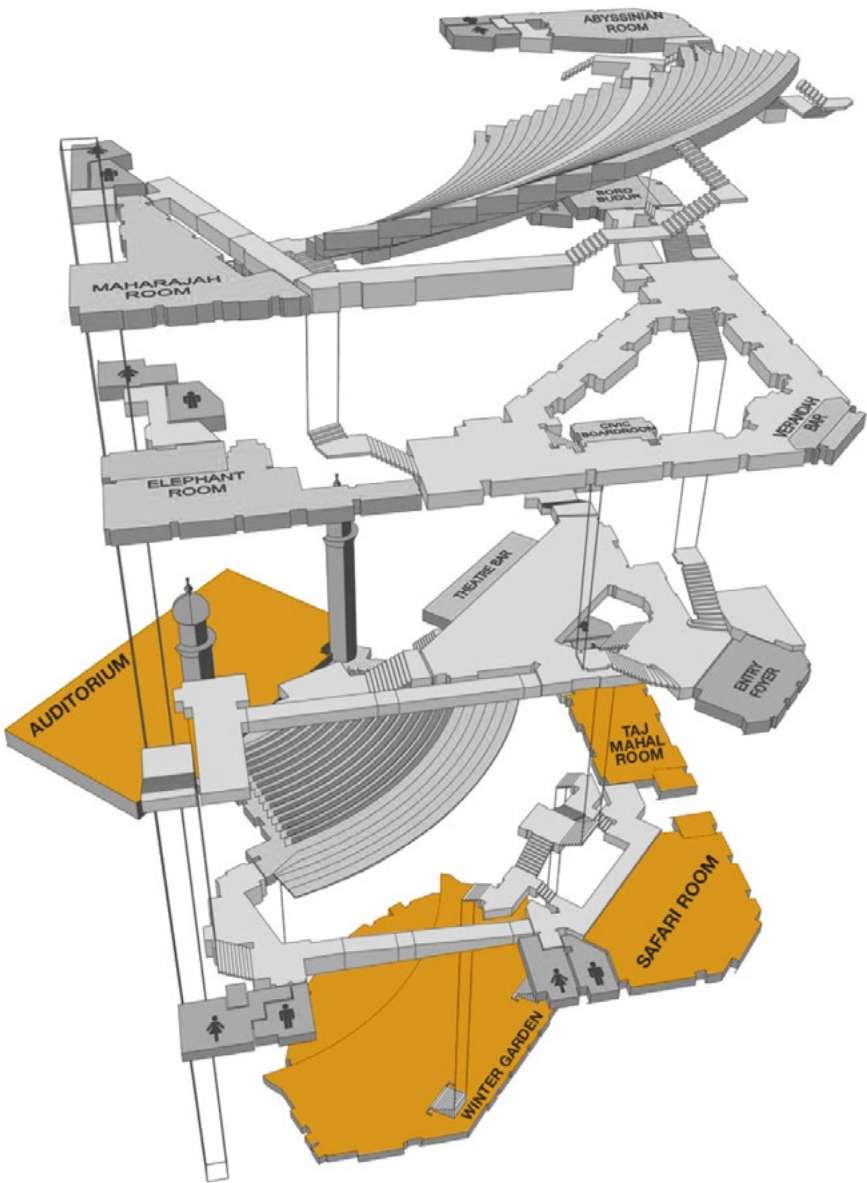
| ROOMS | HEIGHT m | AREA m ² | THEATRE | CABARET | BANQUET | COCKTAIL | EXHIBITION |
|--------------|----------|---------------------|---------|---------|---------|----------|------------|
| Ground Floor | 4.9m | 2216m ² | 1575 | 580 | 700 | 2000 | 61 booths |
| Level 1 | 3.75m | 2204m ² | 1000 | 640 | 750 | 1000 | 53 booths |

Please note: All capacities are guidelines only and are based on the maximum use of the space available for standard setups. They may be reduced by staging, technical equipment, dance floors, type of menu being served or entertainment.

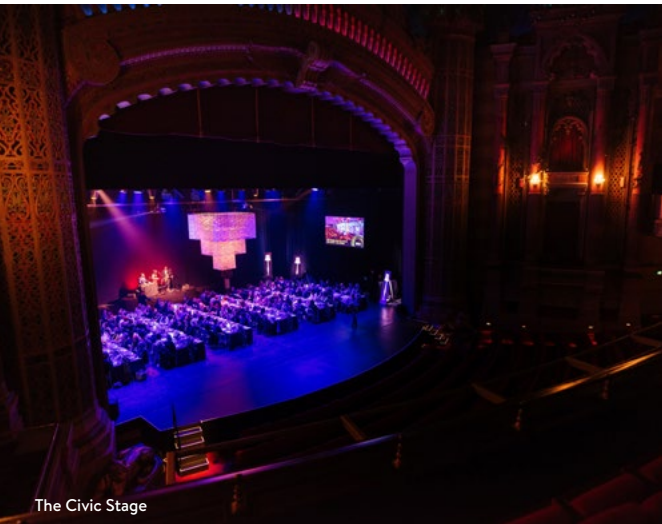
THE CIVIC | TE CIVIC

AUCKLAND
CONVENTIONS
venues & events

Discover **The Civic** here.



The Civic Foyer



The Civic Stage



Wintergarden

OPULENCE IN THE HEART OF THE CITY

The Civic, a much-loved Auckland landmark and entertainment venue is one of the few remaining atmospheric theatres in the world. It is an opulent and dramatic venue with unique rooms for hire. Sweeping double staircases, smaller rooms and extensive circulation space around the ornate bars make The Civic well suited for intimate and large events like cocktail functions, banquet dinners, pre-show cocktails and more.

FEATURES

- Central Auckland city location
- Domed ceiling with spectacular starscape
- Four unique spaces to choose from
- Moorish design with turrets, minarets and spires
- Award winning catering providers
- Ability to host an event on The Civic Auditorium Stage

Capacity Chart

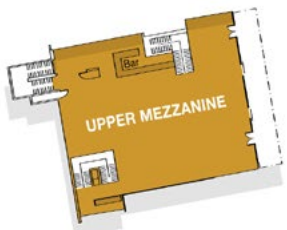
| ROOMS | HEIGHT m | AREA m ² | THEATRE | U-SHAPE | CLASSROOM | CABARET | BANQUET | COCKTAIL |
|----------------------|----------|---------------------|---------|---------|-----------|---------|---------|----------|
| The Civic Auditorium | 24m | 1990m ² | 2378 | — | — | — | — | — |
| The Civic Stage | — | — | — | — | — | — | 210 | 300 |
| Wintergarden | 4m | 550m ² | 428 | — | 292 | 256 | 320 | 525 |
| Safari Room | 2.75m | 160m ² | 70 | 28 | 40 | 64 | 80 | 80 |
| Taj Mahal Room | 4m | 110m ² | 63 | 28 | 40 | 40 | 50 | 70 |

Please note: All capacities are guidelines only and are based on the maximum use of the space available for standard setups. They may be reduced by staging, technical equipment, dance floors, type of menu being served or entertainment.

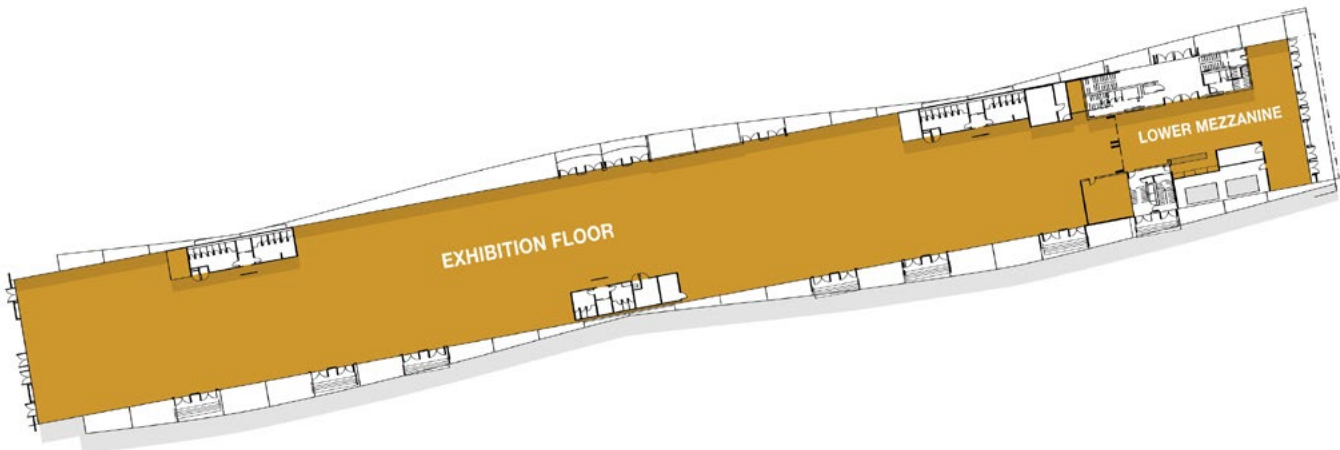
THE CLOUD

AUCKLAND
CONVENTIONS
venues & events

Discover **The Cloud** here.



Level 2



Level 1



EXQUISITELY UNIQUE ON QUEENS WHARF

The Cloud is a unique, modern structure along Auckland’s waterfront. It is conveniently located close to hotels, shopping, dining and entertainment precincts. This multipurpose venue is ideal for exhibitions, cocktail functions, dinners, weddings and large-scale events. Most spaces offers unparalleled views of the Waitematā Harbour.

FEATURES

- Unique and modern
- Pillar-less venue
- 2,700m2 exhibition floor space
- Flexible spaces to suit all event types
- Award winning catering providers
- Close proximity to Shed 10 and downtown Auckland
- Walking distance from major transport hubs - train, bus and ferry terminals
- Panoramic views of Rangitoto Island and Devonport across the Waitematā Harbour



Upper Mezzanine



Exhibition Floor



Balcony



Lower Mezzanine

Capacity Chart

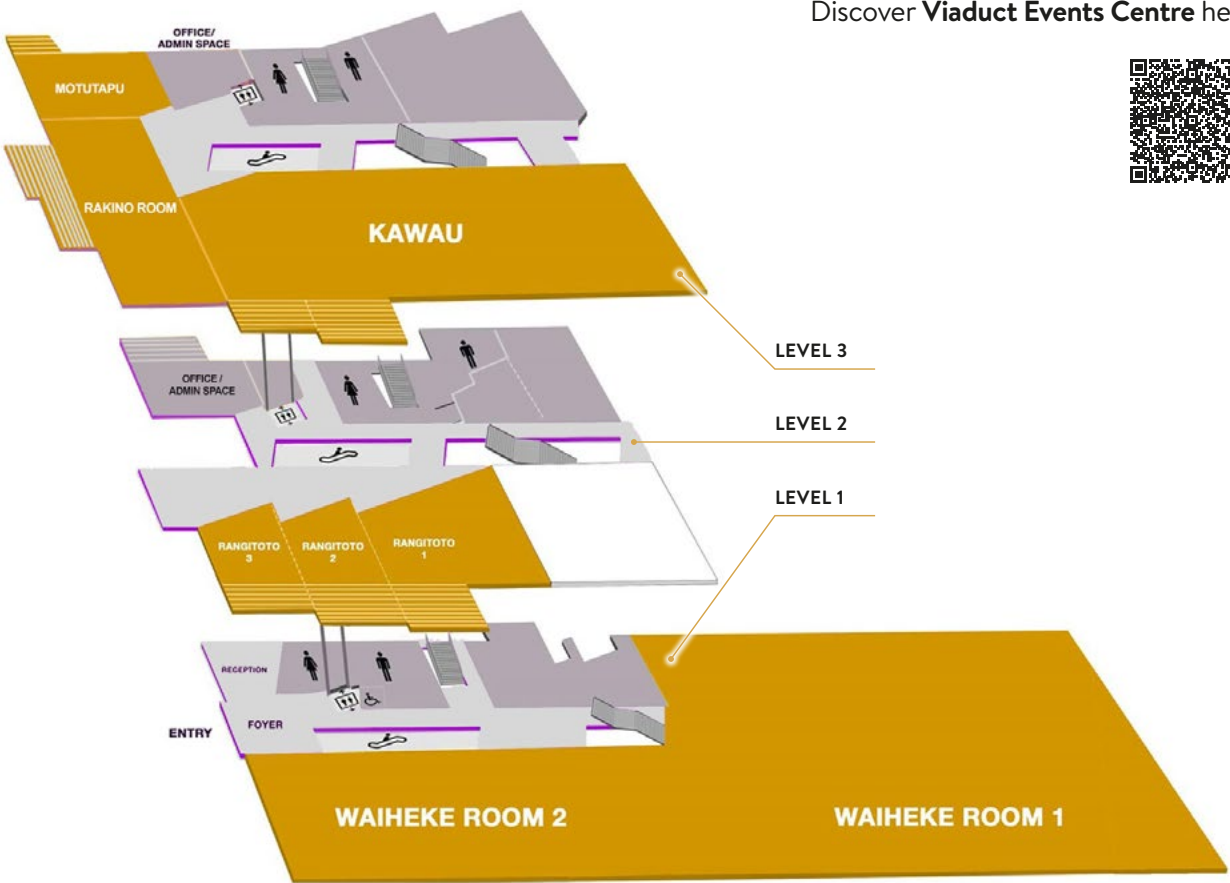
| ROOMS | HEIGHT m | AREA m ² | THEATRE | BANQUET | COCKTAIL | EXHIBITION |
|------------------|----------|---------------------|---------|---------|----------|------------|
| Exhibition Floor | Varied | 2697m ² | 2000 | 1750 | 2000 | 107 |
| Lower Mezzanine | 2.8m | 228m ² | 100 | 100 | 100 | 8 |
| Upper Mezzanine | Varied | 444m ² | 230 | 190 | 230 | 11 |

Please note: All capacities are guidelines only and are based on the maximum use of the space available for standard setups. They may be reduced by staging, technical equipment, dance floors, type of menu being served or entertainment.

VIADUCT EVENTS CENTRE

AUCKLAND
CONVENTIONS
venues & events

Discover Viaduct Events Centre here.



A PREMIUM VENUE EXCEPTIONAL ON ALL LEVELS

The Viaduct Events Centre takes pride of place in Auckland’s reinvigorated Wynyard Quarter. The building has been designed to a five-star environmental standard and makes the most of its impressive waterfront location with glass walls, balconies, and easy access to the wharf. This venue is ideal for cocktail functions, gala dinners, exhibitions, and conferences.

FEATURES

- Distinctive and flexible spaces
- Located on the waterfront in the vibrant Wynyard Quarter
- 6,000m² three-storey venue
- Dramatic views across the Waitematā Harbour
- Premium banquet space
- Award winning catering providers
- On-site audio-visual technicians
- Seven versatile rooms
- Accessible balconies attached to Level 2 and 3 spaces



Capacity Chart

| ROOMS | HEIGHT m | AREA m ² | THEATRE | CLASSROOM | BANQUET | COCKTAIL | EXHIBITION |
|-------------------|----------|---------------------|---------|-----------|---------|----------|------------|
| Waiheke 1 & 2 | Varied | 2109m ² | 2300 | 1200 | 1200 | 2850 | 130 booths |
| Waiheke 1 | 12m | 1406m ² | 1800 | 1000 | 850 | 2200 | 100 booths |
| Waiheke 2 | 3.5m | 703m ² | 450 | 320 | 400 | 600 | 25 booths |
| Rangitoto 1 | 3.5m | 192m ² | 180 | 96 | 120 | 240 | — |
| Rangitoto 2 | 3.5m | 74m ² | 50 | 40 | 50 | 50 | — |
| Rangitoto 3 | 3.5m | 72m ² | 50 | 32 | 50 | 50 | — |
| Rangitoto 1 & 2 | 3.5m | 267m ² | — | — | — | 240 | — |
| Rangitoto 2 & 3 | 3.5m | 146m ² | — | — | — | 175 | — |
| Rangitoto 1, 2, 3 | 3.5m | 338m ² | — | — | — | 240 | — |
| Kauwau | 4m | 570m ² | 570 | 375 | 400 | 700 | 30 booths |
| Motutapu | 4m | 88m ² | 50 | 48 | 50 | 50 | — |
| Rakino | 4m | 192m ² | 180 | 100 | 120 | 200 | — |

Please note: All capacities are guidelines only and are based on the maximum use of the space available for standard setups. They may be reduced by staging, technical equipment, dance floors, type of menu being served or entertainment.

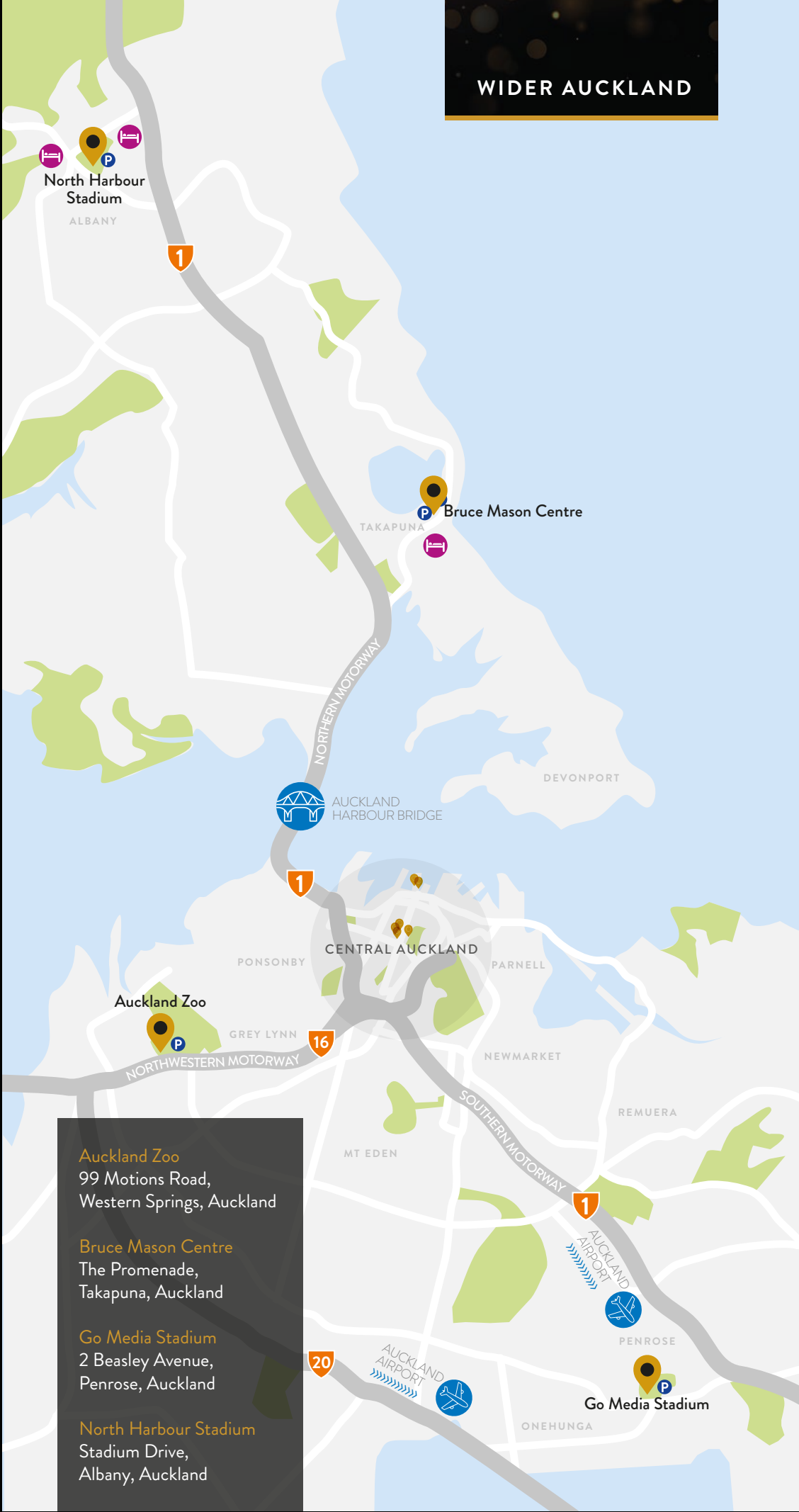
CENTRAL AUCKLAND
KEY

- Auckland Conventions' Venues
- Accommodation
- Parking Facilities



- Aotea Centre**
50 Mayoral Drive, Auckland
- Auckland Art Gallery**
Toi o Tāmaki
Corner of Kitchener & Wellesley Streets, Auckland
- Auckland Town Hall**
305 Queen Street, Auckland
- Shed 10**
89 Quay Street, Auckland
- The Civic**
Corner Queen Street & Wellesley Street, Auckland
- The Cloud**
89 Quay Street, Auckland
- Viaduct Events Centre**
161 Halsey Street, Wynyard Quarter

WIDER AUCKLAND



- Auckland Zoo**
99 Motions Road, Western Springs, Auckland
- Bruce Mason Centre**
The Promenade, Takapuna, Auckland
- Go Media Stadium**
2 Beasley Avenue, Penrose, Auckland
- North Harbour Stadium**
Stadium Drive, Albany, Auckland

OUR SERVICES

With an experienced and specialised team, state-of-the-art facilities and equipment, and a comprehensive range of in-house services, Auckland Conventions is passionate about catering for every event requirement.

EVENT PLANNING

A dedicated Event Planner is assigned to partner with you for every event. They are your point of contact for providing ideas, answering questions and looking after every detail to ensure the successful delivery of your event.

TECHNICAL SERVICES

From lighting design to audio visual support, our technical team offers the experience and technical capability to turn your creative vision into reality.

CATERING

We partner with some of Auckland's finest, award winning food and beverage specialists to create exceptional menus to suit your working lunch, cocktail function, gala dinner and more.

SECURITY SERVICES

Our security services team ensures a safe and enjoyable environment is maintained throughout our venues and events, providing safety and security assistance where necessary.

THIS PAGE

'Untitled' by Paratene Matchitt,
Aotea Centre. Photo by Sacha Stejko.

BACK COVER

The Civic. Photo by David Straight.

IMAGE PHOTOGRAPHY

Michael Bradley, Jinki Cambroner, Jay Farnworth,
Caren Hastings, Tom Hollow, Heath Johnson /
Deft Photography, Ivan Muller, Murray Lloyd Photography, Hannah
Peters, David St George, Bas van Est, David Watson, David Straight.

Nga mihi



NEW ZEALAND'S LARGEST PORTFOLIO OF ICONIC VENUES

Level 4, Aotea Centre, 50 Mayoral Drive, Auckland 1010, New Zealand
PO Box 5749, Victoria Street West, Auckland 1142, New Zealand

T 0800 54 98 98 | +64 9 309 2677 | 1800 54 98 98 (AUST)

E events@aucklandconventions.co.nz

W aucklandconventions.co.nz

**AUCKLAND
CONVENTIONS**
venues & events