

## GRAND HYATT SINGAPORE

10 Scotts Road  
Singapore 228211

T +65 6738 1234

F +65 6732 1696

singapore.grand@hyatt.com



## ACCOMMODATIONS

- 699 guestrooms
- Rooms ranging from 42 to 252 square metres
- Individual controlled air-conditioning
- 65-inch Smart LED TV with casting capabilities
- Over 45 television channels
- Minibar/refrigerator
- Wired and wireless broadband Internet connection service
- Digital newspapers and magazines
- Hands-free dual line International Direct Dial telephones with call waiting and conference call
- Spacious bathroom with dual-sink vanity, separate bath and shower facilities, amenities and salon-grade hairdryer
- Large-format Balmain bath amenities
- All rooms are fitted with a dedicated walk-in wardrobe and a multi-purpose desk
- illy coffee machine and tea-making facility
- Iron and ironing board
- Laptop-size safe
- Grand Club™ Lounge

## SERVICES & FACILITIES

- Airport limousine and personal airport greeting
- 24-hour Concierge, Technology Concierge and Room Service
- Wired and wireless broadband Internet throughout the hotel
- Safe deposit boxes
- Express check-out
- Foreign currency exchange service
- Parking for cars with valet parking service
- Limousine for hire
- Baby-sitting service
- Secretariat or group check-in can be arranged

## LOCATION

Grand Hyatt Singapore is located in the heart of the world-renowned Orchard Road precinct, the city's shopping and entertainment district and minutes away from the financial district, cultural and entertainment attractions of the city.

## DIRECTIONS

- Airport: 30 km; 30 min./Taxi
- Financial District: 5 km; 10 min./Taxi
- Singapore Expo: 20 km; 20 min./Taxi
- Mass Rapid Transit Train: 0.4 km; 5 min./Walking

## POINTS OF INTEREST

- Asian Civilisations Museum
- Boat Quay and Clarke Quay
- Bukit Timah Nature Reserve
- Chinatown
- Fort Canning Park
- Marina Bay
- Mount Faber and Cable Car Station
- Sentosa

## VISITOR INFORMATION

- Climate: Tropical with temperatures ranging between 24-32 °C
- Voltage: 220-240V AC, transformers available
- Currency: Singapore dollar (SGD)

## RESTAURANTS & BARS

- StraitsKitchen
- Oasis
- 10|SCOTTS
- Le Pristine Singapore
- martini bar
- Pete's Place
- BRIX

## MEETING & EVENT SPACES

- Over 5,100 square metres of highly flexible event space to suit every occasion from conferences, receptions to social events, ranging from 10 to 2,200 guests
- The highly stylised event space encompasses 16 individual venues with unrivalled lighting capabilities and technology
- The Grand Salon (515 square metres) is equipped with a Show Kitchen featuring a customised cooking suite designed to heighten the senses with live culinary experiences and showmanship, with the capacity of 320 guests for banquets or up to 700 guests for receptions
- The Grand Ballroom (577 square metres) has a capacity of up to 380 guests for banquets and 800 guests for receptions, showcasing a 6-metres ceiling and extended digital canvases
- A dedicated and professional team of creative event planners to manage every stage from conception to post-event for a memorable and successful event

## RECREATIONAL FACILITIES

- Damai Fitness Centre with fully equipped gymnasium
- Semi-Olympic-sized pool and hydro-massage saltwater pool
- Damai Spa with 5 treatment rooms including couple's suite
- Salt Steam Room
- Infrared Sauna, Experiential Shower with hot and cold therapy, and Vitality Pools that promote recovery and rejuvenation.



## GRAND HYATT SINGAPORE

10 Scotts Road  
Singapore 228211

+65 6738 1234 TELEPHONE

+65 6732 1696 FAX

singapore.grand@hyatt.com

singapore.grand.hyatt.com



# GRAND | HYATT™

## CAPACITY CHART



ROOM NAME	ROOM DIMENSIONS L X W X H	ROOM SIZE SQ. FT./SQ. M.	BANQUET	BOARDROOM DINNER	RECEPTION	THEATRE	CLASSROOM	BOARDROOM	U-SHAPE	HOLLOW SQUARE
<b>Level 1</b>										
GALLERY I	45.7 x 51.1 x 10.5 13.9m x 15.6m x 3.2m	2,335 217	130	108	220	216	117	108	48	54
GALLERY II	45.7 x 51.1 x 10.5 13.9m x 15.6m x 3.2m	2,335 217	130	108	220	216	117	108	48	54
GALLERY I AND II	91.4 x 51.1 x 10.5 27.9m x 15.6m x 3.2m	4,671 435	260	206	480	432	234	—	66	72
ATELIER I	29.4 x 18.6 x 10.5 9m x 5.7m x 3.2m	547 51	30	18	40	50	36	18	18	24
ATELIER II	37.3 x 23 x 10.5 11.4m x 7m x 3.2m	858 80	40	24	60	70	45	24	24	30
ALL ROOMS AND FOYER AREAS	— —	8,890 826	—	—	700	—	—	—	—	—
<b>Level 2</b>										
GRAND SALON 1	74.8 x 37 x 11.2 22.8m x 11.3m x 3.4m	2,768 258	160	162	220	256	144	162	60	72
GRAND SALON 2	74.8 x 37 x 11.2 22.8m x 11.3m x 3.4m	2,768 258	160	162	220	256	144	162	60	72
GRAND SALON	74.8 x 74.1 x 11.2 22.8m x 22.6m x 3.4m	5,543 515	320	324	480	512	288	—	72	96
SALON 1	44.3 x 22.6 x 11.2 13.5m x 6.9m x 3.4m	1,001 93	50	24	50	72	36	24	30	36
SALON 2	44.3 x 21.3 x 11.2 13.5m x 6.5m x 3.4m	944 88	50	24	50	72	36	24	30	36
SALON 1 AND 2	44.3 x 50.2 x 11.2 13.5m x 15.3m x 3.4m	2,224 207	100	48	100	144	72	48	60	72
DRAWING ROOM	40.7 x 21 x 11.2 12.4m x 6.4m x 3.4m	855 79	30	30	50	60	48	12	21	30
SALON 5	40.7 x 24 x 11.2 12.4m x 7.3m x 3.4m	976 90	50	24	50	72	54	24	30	36
SALON 6	40.7 x 30.8 x 11.2 12.4m x 9.4m x 3.4m	1,254 117	50	24	50	72	54	24	30	36
SALON 5 AND 6	40.7 x 54.8 x 11.2 12.4m x 16.7m x 3.4m	3,228 207	80	48	100	144	108	48	60	72
ALL ROOMS AND FOYER AREAS	— —	16,910 1,571	—	—	1,350	—	—	—	—	—

## GRAND HYATT SINGAPORE

10 Scotts Road  
Singapore 228211

+65 6738 1234 TELEPHONE

+65 6732 1696 FAX

singapore.grand@hyatt.com

singapore.grand.hyatt.com



## CAPACITY CHART



ROOM NAME	ROOM DIMENSIONS L X W X H	ROOM SIZE SQ. FT./SQ. M.	BANQUET	BOARDROOM DINNER	RECEPTION	THEATRE	CLASSROOM	BOARDROOM	U-SHAPE	HOLLOW SQUARE
<b>Level 3</b>										
GRAND RESIDENCE 1	49.2 x 47.6 x 14.7 15m x 14.5m x 4.5m	2,342 218	130	102	230	208	108	102	45	60
GRAND RESIDENCE 2	49.2 x 50 x 14.7 15m x 15.2m x 4.5m	2,460 228	130	102	230	160	108	102	45	60
GRAND RESIDENCE	49.2 x 97.6 x 16.4 15m x 29.7m x 4.5m	4,802 446	260	204	460	368	216	—	90	120
GRAND BALLROOM 1	64 x 49.2 x 19.6 19.5m x 15m x 6m	3,149 293	180	108	380	270	120	108	72	90
GRAND BALLROOM 2	64 x 47.9 x 19.6 19.5m x 14.6m x 6m	3,066 285	180	108	380	270	120	108	72	90
GRAND BALLROOM	64 x 97.1 x 19.6 19.5m x 29.6m x 6m	6,214 577	360	306	760	690	384	—	109	126
RESIDENCE 1	53.1 x 24.3 x 8.9 16.2m x 7.4m x 2.7m	1,290 120	60	24	60	100	54	24	30	36
RESIDENCE 2	47.6 x 30.5 x 8.9 14.5m x 9.3m x 2.7m	1,452 135	60	18	60	60	45	18	21	30
RESIDENCE 5	60 x 24.3 x 8.9 18.3m x 7.4m x 2.7m	1,458 135	80	42	75	120	84	42	48	54
RESIDENCE 6	60 x 28.9 x 8.9 18.3m x 8.8m x 2.7m	1,734 161	80	42	75	120	84	42	48	54
RESIDENCE 5 & 6	60 x 53.2 x 8.9 18.3m x 16.2m x 2.7m	3,192 296	130	84	150	240	168	84	96	108
RESIDENCE 7	26.9 x 23.3 x 8.9 8.2m x 7.1m x 2.7m	627 58	12	12	30	32	27	12	18	24
ALL ROOMS AND FOYER AREAS	— —	29,988 2,786	—	—	2,200	—	—	—	—	—
GRAND RESIDENCE AND GRAND BALLROOM	— —	17,771 1,651	660	620	1,350	—	—	—	—	—
RESIDENCE AND FOYER AREAS	— —	9,547 887	340	288	650	—	—	—	—	—



**GRAND HYATT SINGAPORE**

10 Scotts Road  
Singapore 228211

+65 6738 1234 TELEPHONE  
+65 6732 1696 FAX

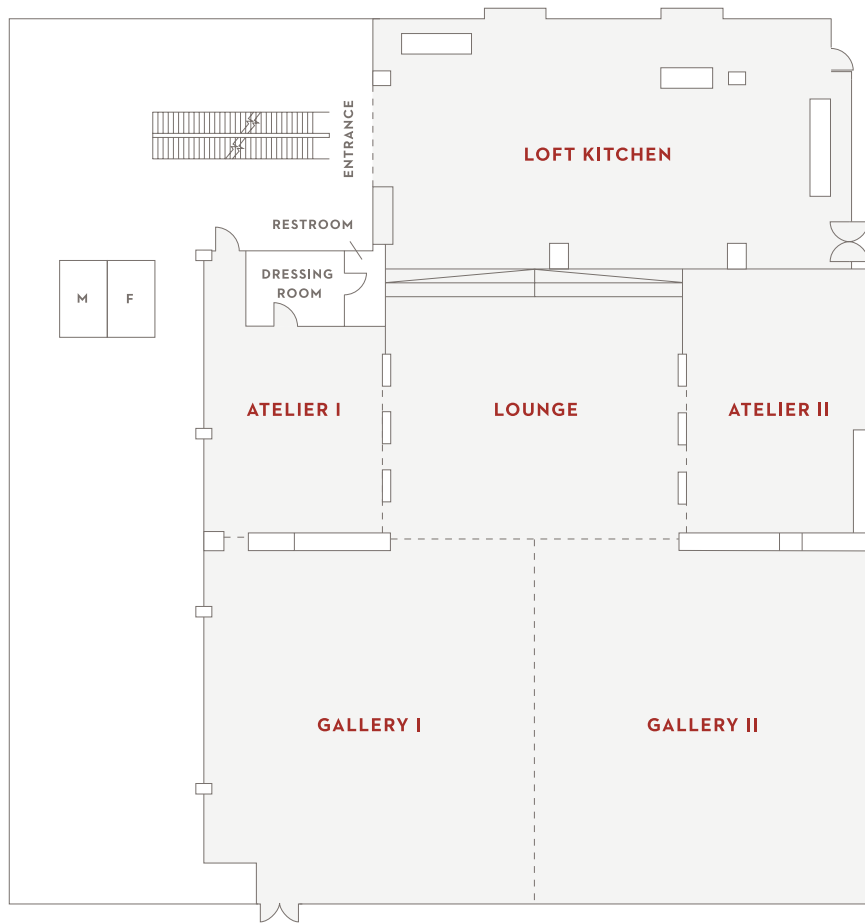
[singapore.grand@hyatt.com](mailto:singapore.grand@hyatt.com)  
[singapore.grand.hyatt.com](http://singapore.grand.hyatt.com)



GRAND | HYATT™

**FLOOR PLAN**

Level 1



**GRAND HYATT SINGAPORE**

10 Scotts Road  
Singapore 228211

+65 6738 1234 TELEPHONE  
+65 6732 1696 FAX

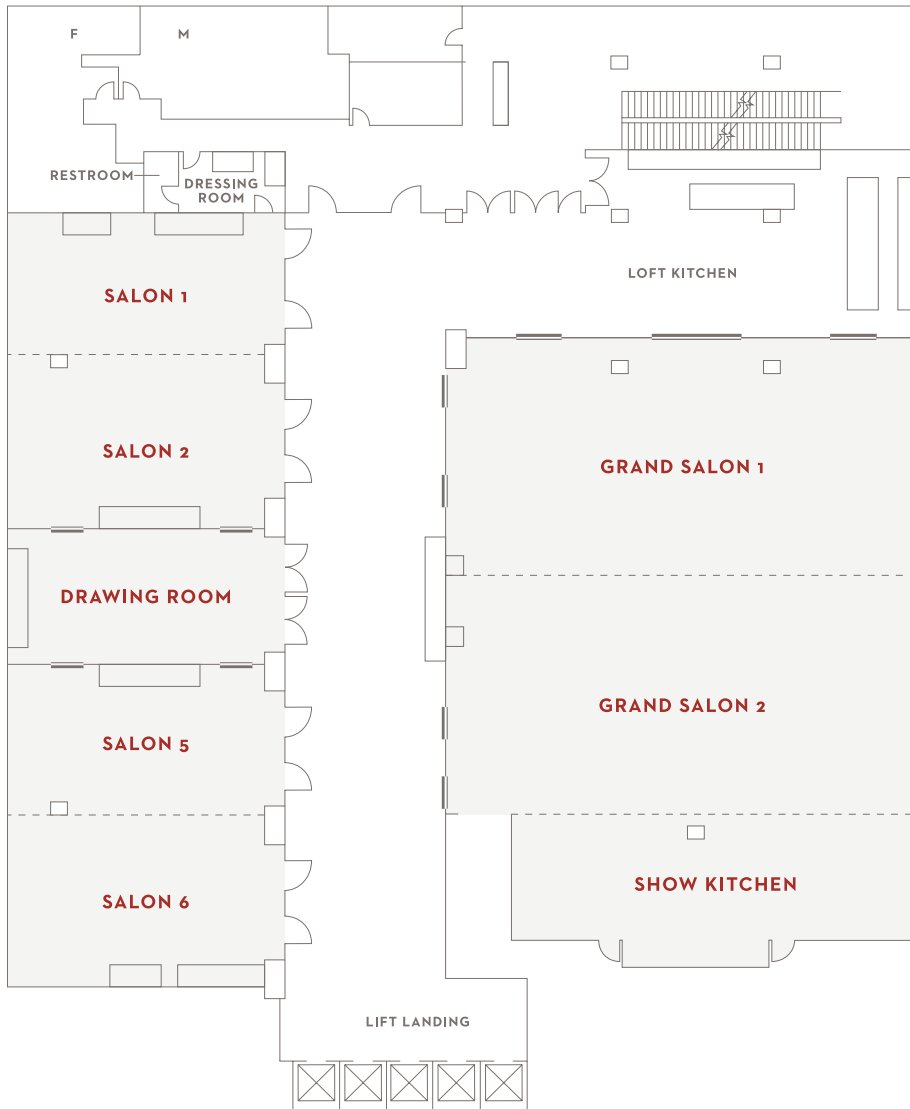
singapore.grand@hyatt.com  
singapore.grand.hyatt.com



**GRAND | HYATT™**

**FLOOR PLAN**

*Level 2*



**GRAND HYATT SINGAPORE**

10 Scotts Road  
Singapore 228211

+65 6738 1234 TELEPHONE  
+65 6732 1696 FAX

singapore.grand@hyatt.com  
singapore.grand.hyatt.com



**FLOOR PLAN**

Level 3

