



ADELAIDE

Surrounded by food and wine producing regions, Adelaide offers a complete package of Australian experiences that include wildlife and culture. Home to a range of annual arts festivals, the city's Mediterranean climate is ideal for bespoke open-air events.



Access

Adelaide Airport is serviced by international and domestic flights

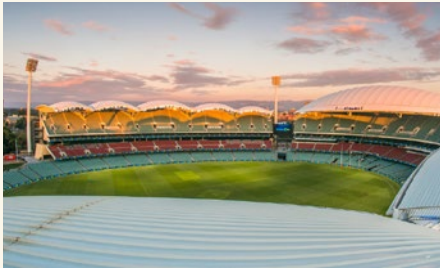


Weather

Summer from Dec-Feb
(average max. 29°C/84°F)

Winter from Jun-Aug
(average max. 16°C/61°F)

EXPERIENCES



Sunrise up high

Gaze at the incredible views over a gourmet breakfast on the roof of South Australia's largest stadium with **RoofClimb Adelaide Oval**.



See Kangaroo Island

Take a 35-minute flight to Kangaroo Island and see wildlife in natural habitats, marvel at spectacular coastlines, unspoilt beaches and bushland sanctuaries with **Kangaroo Island Odysseys**.



Fruit picking in the Hills

Bond with your team while picking your own strawberries at **Beerenberg Farm** and learning about Adelaide's premium produce.



Experience the Cube

Visit the **d'Arenberg Cube**, inspired by the puzzles of wine-making, in McLaren Vale, and enjoy a tailored 'Dinner with the Winemaker'.



Adventure in the city

Swing through the canopies at Australia's first inner-city aerial adventure park at **TreeClimb Adelaide** in the leafy and centrally located Park Lands.



Try local flavours

Take a behind-the-scenes tour and taste of the **Adelaide Central Markets**, established in 1869.

WHY NOT...

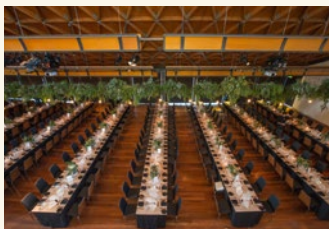


Host an exclusive dining experience at **Restaurant Botanic**, with ingredients straight from the gardens on your plate. You can also hire the gardens for exclusive use to hold an outdoor event amongst the foliage.



Transform the dining precinct of **Vardon Avenue** into an exclusive laneway party. **East End Cellars** and **Keito Events** can create food stations for a roaming breakfast or long tables for a banquet, complete with local wines and live entertainment.





VENUES



Adelaide Oval

- Multi-purpose sports and events complex which can host up to 3,000 guests
- 25 indoor and outdoor spaces



National Wine Centre of Australia

- Can host up to 1,000 guests across six flexible spaces
- Wine education and tasting tours
- Small groups can dine in the wine cellar, one of the largest in the Southern Hemisphere



Mayfair Hotel

- Hennessy Rooftop Bar is ideal for cocktail functions for groups of up to 150, with sweeping views of the city
- Five other function rooms

More than
6,500
hotel rooms
in Adelaide's
city centre



WHAT'S NEW

Eos by SkyCity

New luxury 120-room hotel Eos by SkyCity opened in December 2020 as part of the A\$330 million redevelopment of Adelaide's casino, SkyCity Adelaide. Event spaces at the hotel include the SkyCity Ballroom, which can accommodate up to 650 people standing or 450 guests banquet-style.

Claiming pride of place as Adelaide's highest rooftop bar, **Merrymaker Rooftop Bar** is also boutique and petite, with capacity for up to 70 guests for an exclusive event. Located atop **the IHG Indigo Hotel Adelaide Markets**, this vibrant tiled space offers views over the cityscape and the Adelaide Hills.



DID YOU KNOW?

South Australia produces 80% of Australia's premium wine. The **Adelaide Hills** and famed **Barossa** and **McLaren Vale** regions offer a range of unique venues for private events.



Hotel openings

The 251-room 5 star luxury hotel **Sofitel Adelaide** opened in November 2021. In the Adelaide Hills, the highly anticipated **Sequoia** features 14 sustainably designed luxury suites.



EXPLORE FURTHER

Flinders Ranges

This 540-million-year-old landscape 90 minutes' flight from Adelaide offers a unique outback experience, with hiking, scenic flights and 4WD adventures. Completely unplug at luxury lodge **Arkaba**, a former farm homestead which accommodates 10 guests on its 59,305 acres (24,000 hectares), or stay in the luxury tents at **Ikara Safari Camp**.

Barossa Valley

An hour's drive from Adelaide, the Barossa Valley is home to iconic Australian wines, like **Seppeltsfield**. Taste the winery's signature Para Vintage Tawny – traditionally matured for a century before bottling – from the year of your birth direct from the barrel, before checking into **The Louise**, which offers 15 luxury suites, meeting facilities and private vineyard tours for groups.





BRISBANE

Located on the Brisbane River, Brisbane is the third largest city in Australia with a sub-tropical climate, thriving dining scene, and a range of outdoor activities to create a rewarding incentive trip.



Access

Brisbane Airport is serviced by international and domestic flights. With the opening of the airport's new runway in July 2020, Brisbane now has the greatest runway capacity in Australia.



Weather

Summer from Dec-Feb (average max. 30°C/86°F)

Winter from Jun-Aug (average max. 23°C/73°F)

EXPERIENCES



Sip and dine

Enjoy bespoke and hands-on food and wine experiences at the award-winning **Sirromet Winery**, 35 minutes south of Brisbane.



Have an island adventure

Cruise to **Tangalooma Island Resort** on Moreton Island and snorkel sunken wrecks or hand-feed a wild dolphin.



Tour the city differently

Learn the history and stories of Brisbane and gain local insight with a volunteer Brisbane Greeter. Tours can be delivered to varying group sizes in more than 20 languages.



Take to the river

Take a twilight paddle down the Brisbane River in an illuminated kayak with **Riverlife**.



Get up close to a koala

Cuddle a koala and feed kangaroos at **Lone Pine Koala Sanctuary**. Home to over 130 koalas, it's the largest sanctuary of its kind in the world.



Reach new heights

The 360-degree view from the summit of the city's central bridge on a **Story Bridge Adventure Climb** offers a great view of Brisbane's city skyline and further afield.

WHY NOT...



Take over waterfront venue **Blackbird Bar & Restaurant**, indulging in the freshest seafood while drinking in the incredible river and city views. Sections of the restaurant are available for private use by smaller groups.



Relax in the serenity of **Spicers Hidden Vale Retreat**, set on 12,000 acres (4,856 hectares) of Australian bush. Enjoy the fare of critically acclaimed restaurant **Homage**, dining under the vaulted ceiling of the recently reopened Homestead, in the barn or under the stars.





VENUES



Howard Smith Wharves

- Three indoor riverside event spaces with capacity for up to 630 cocktail style and outdoor spaces for up to 500
- Precinct includes an overwater bar, rooftop terraces, restaurants, a brewery and a hotel



Brisbane Powerhouse

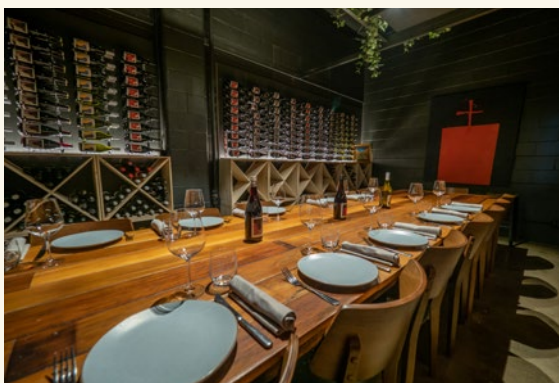
- Historical industrial building on the river with a contemporary creative heart
- 12 indoor and outdoor spaces with capacity for up to 320 for seated dinners



Fortitude Music Hall

- One of Australia's largest ballroom/theatre-style venues
- Capacity for up to 1,100 for dinner and 3,000 standing

More than **21,000** hotel rooms in the greater Brisbane region



WHAT'S NEW

City Winery Brisbane

The first inner city winery in Brisbane since 1860, this venue offers three event spaces – the barrel room, for an event surrounded by maturing wine, the private cellar and the restaurant. Group experiences include an afternoon of cooking classes and winemaking for a group dinner. The team has also opened a cellar door and wine experience centre in the heart of the city with event space for up to 200 people.



DID YOU KNOW?

Since 2018, five new five-star hotels have opened in Brisbane, with the new Queen's Wharf development – opening in 2023 – set to offer Brisbane's first six-star hotel.



voco Brisbane City Centre

Brisbane welcomed its first voco hotel in June 2022. Perched on the banks of the Brisbane River, the vibrant new property features 194 artfully designed guestrooms and eleven stylish event spaces.



River to Bay Tours

Water tours with River to Bay take place on some of the fastest boats in Southeast Queensland, so you can see more of Brisbane and its surrounds. It's possible to visit three of the city's nearby islands in one day, taking in Australia's unique wildlife.



EXPLORE FURTHER

Sunshine Coast

Eighty minutes' drive north of Brisbane, get beachside on the Sunshine Coast, where the sun shines more than 300 days a year. Host dinners and barbeques on the beach, horse ride along the sand, swim with humpback whales and visit farms in the Noosa hinterland with **Beyond Experiences** for paddock-to-plate dining and exclusive culinary tours with local producers. The Sunshine Coast is also a short scenic flight from the World Heritage listed K'gari (formerly Fraser Island), the largest sand island on Earth.

Scenic Rim

Located an hour from Brisbane, this hinterland offers mountain ranges, rainforests and locally produced wines. Stay at luxury accommodation and choose from a range of activities to discover the region.





CAIRNS & PORT DOUGLAS

With a relaxed tropical atmosphere and access to the World Heritage listed Great Barrier Reef and the Wet Tropics Rainforest, Cairns and nearby Port Douglas offer sophisticated resorts, al fresco dining and iconic Australian experiences.



Access

Cairns Airport is serviced by international and domestic flights

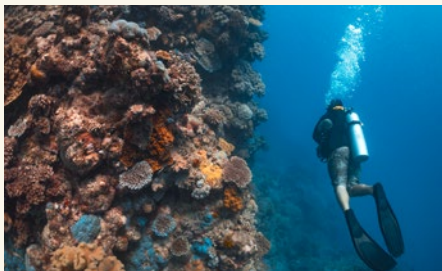


Weather

Summer from Dec-Feb
(average max. 31°C/89°F)

Winter from Jun-Aug
(average max. 26°C/79°F)

EXPERIENCES



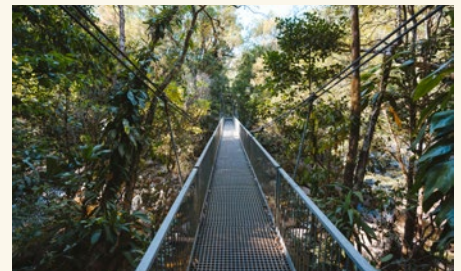
Explore the Reef

Go snorkelling on the outer Great Barrier Reef and see one of the seven natural wonders of the world up close.



Have dinner in the forest

Host a dinner for up to 800 people in the rainforest under hand strung crystal chandeliers at **Flames of the Forest**.



Experience Indigenous culture in Mossman Gorge

Learn about the traditional culture of the local Aboriginal people on a **Ngadiku Dreamtime Walk** led by an Indigenous guide in Mossman Gorge.



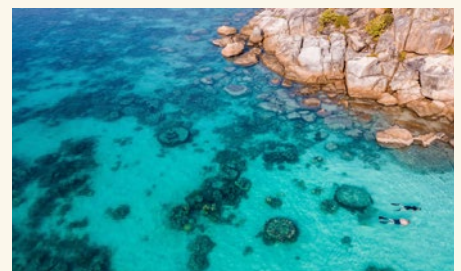
See the Reef from above

Take to the skies for a bird's eye view of the Great Barrier Reef with a scenic flight by **Nautilus Aviation**.



Build a team uniquely

Fly down a zipline with a difference at **Cairns Zoom and Wildlife Dome**, an adventurous high ropes course inside a wildlife sanctuary.



Take it easy on an island

Relax in a secluded spot on **Lizard Island**, the Great Barrier Reef's northernmost luxury resort, which boasts 40 rooms and 24 private beaches.

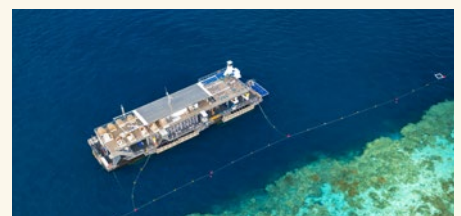
WHY NOT...



Enjoy fresh sugarcane cocktails at sunset as a theatrical sugarcane burn reveals your table for dinner on a working cane farm.



Spend the night sleeping under the stars on a pontoon floating on the Great Barrier Reef.





VENUES



Hemingway's Brewery

- Cairns Wharf location
- Bond Store and courtyard have capacity for 300 cocktail style
- The whole venue can be booked for exclusive use for 800 guests or 1,000 with an outdoor extension permit



Sunlover Reef Cruises Moore Reef Pontoon

- First dedicated events venue on the Great Barrier Reef with capacity for 300 people
- 90-minute high speed cruise to pontoon at Moore Reef
- DJ or live band can be arranged



Sheraton Grand Mirage Resort Port Douglas

- Five-star beachfront resort
- 295 guest rooms
- 12 indoor and outdoor event venues with space for up to 1,000 delegates

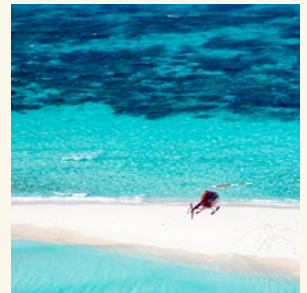
11,700
hotel rooms
in Cairns and Port
Douglas regions



WHAT'S NEW

The Crystalbrook Collection

The Crystalbrook Collection rounded out its trio of "sibling" hotels in Cairns, with the opening of Flynn in November 2020. Described as the "wild child" of the three, the 311-room hotel joined the "modern, innovative and arty" 255-room Bailey and the "sophisticated and playful" 311-room Riley which opened in November 2018. Flynn has three event spaces for up to 160 people, a spa, two eateries and the laidback bluesy Wine and Whiskey bar.



DID YOU KNOW?

The region is one of the few places in the world in which two World Heritage-listed areas intersect: the Wet Tropics, the world's oldest living tropical rainforest, meets the only living thing on Earth that can be seen from space, the Great Barrier Reef.



Silky Oaks Lodge

Perfect for small groups, this luxury lodge in the Daintree rainforest has undergone a multimillion-dollar rebuild, reopening in December 2021. Featuring accommodation options from retreats and treehouses to the one-of-a-kind Daintree Pavillion, the lodge offers a new riverside event space and bespoke experiences from adventure, special interest or simply relaxing among the calm of the rainforest and crystal-clear river.



EXPLORE FURTHER

Green Island

A 45-minute catamaran ride from Cairns, **Green Island Resort** caters to small groups for meetings and incentive trips. Expect sustainable luxury accommodation and activities such as diving, snorkelling, scenic helicopter flights and exclusive island dining for up to 150 people.

Palm Cove

Drive 30 minutes north of Cairns to get to Palm Cove. Stay at the **Pullman Palm Cove Sea Temple Resort and Spa**, which has 101 rooms, onsite experiences for groups and 10 event spaces with capacity to host up to 200 for dinner by the pool. Unwind with beach yoga and mindfulness sessions at **Peppers Beach Club & Spa**. Include lunch or dinner on the beach at **Nu Nu Restaurant**.





CANBERRA

Boasting national attractions and an array of restaurants and bars, Australia's capital is a modern city complemented by nearby wine regions and plenty of natural attractions.



Access

Canberra Airport is serviced by international and domestic flights.



Weather

Summer from Dec-Feb (average max. 28°C/82°F)

Winter from Jun-Aug (average max. 12°C/54°F)

EXPERIENCES



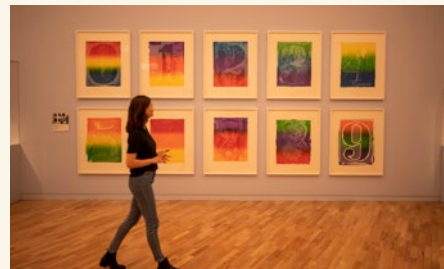
Explore Parliament House

Take an exclusive back-of-house tour of Australia's national meeting place, including its impressive gardens and priceless art collection.



Fly to a winery

Take the scenic route to a local winery with a helicopter flight over the city before descending for a wine tasting at **Shaw Wines**.



A feast of icons

Get the inside scoop on an after-hours tour of the **National Gallery of Australia** before enjoying a curated dinner with each course inspired by a work of art, in this new **Cultural Attractions of Australia** offering.



Start the day up high

Take a sunrise hot air balloon ride over the city and its leafy surrounds while enjoying a gourmet breakfast. Float back down and land in the grounds of **Old Parliament House**.



Party without the politics

Host a dinner for up to 600 guests under the soaring ceilings of the Great Hall at **Parliament House**. Events can also be held in several private dining rooms.



Taste regional produce

Try **Pialligo Estate's** award-winning smoked goods and enjoy an orchard tour or masterclass on the estate's expansive grounds.

WHY NOT...



Go glamping with a pop-up eco wilderness retreat in Canberra's bucolic surrounds with **Experience Nature**, who can cater from 20 to 200 guests.



Stay at the unique **Jamala Wildlife Lodge** and experience close encounters with some of the world's rarest animals.





VENUES



Canberra's national attractions, including the **National Gallery**, **National Museum** and **Parliament House**, hold the story of Australia in their diverse collections and offer prestigious venues for cocktail parties, gala dinners and other events.



National Arboretum Canberra

- Unique indoor and outdoor spaces with expansive views across the 'Bush Capital'
- Can host up to 4,000 guests



Old Parliament House

- 13 indoor and outdoor spaces
- Capacity for small groups of 20 to groups of 400 for dinner
- Have an event in spaces where Australia was shaped, including the House of Representatives



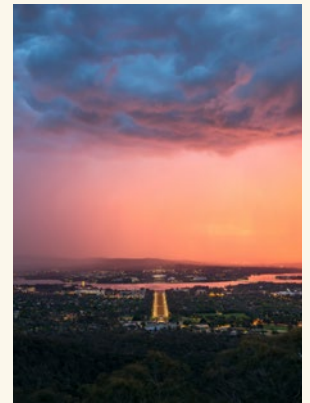
More than **8,500** hotel rooms in the Canberra region



WHAT'S NEW

Midnight Hotel Canberra

Midnight Hotel from Marriott International's Autograph Collection opened in 2019, five minutes' drive from the city centre in the creative neighbourhood of Braddon. The hotel has 199 rooms, including seven suites and an in-house restaurant and bar.



DID YOU KNOW?

Canberra is Australia's largest inland city, located approximately two hours' drive from both beaches and snow-capped mountains.



EXPLORE FURTHER

Canberra Wine Country

Home to over 40 cellar doors and located just 40 minutes from Canberra, discover this cold climate wine region which includes one of Australia's most celebrated wineries, **Clonakilla**.

Snowy Mountains

Located two and half hours' drive away, in New South Wales, the Snowy Mountains are home to Australia's highest point, Mount Kosciuszko. Here you can explore glacial lakes, go skiing, snowboarding, fishing, mountain bike riding, trekking and horse riding. Stay at luxury ski resort **Lake Crackenback Resort & Spa**.





GOLD COAST

Stretching along the coastline of south east Queensland, the Gold Coast offers the perfect mix of city, hinterland and beach experiences to reward your group.



Access

Gold Coast Airport is serviced by international and domestic flights



Weather

Summer from Dec-Feb (average max. 29°C/83°F)

Winter from Jun-Aug (average max. 22°C/71°F)

EXPERIENCES



Learn to surf

It's called Surfers Paradise for a reason – learn to ride the famous waves with **Gold Coast Surf Academy**.



A theatre dinner

Have dinner on stage at refurbished arts precinct **Home of the Arts (HOTA)**, which boasts an amphitheatre, two cinemas and two theatres.



Event on a superyacht

Host cocktails for up to 400 people aboard **The YOT Club**, a custom-designed superyacht decked out with two cocktail bars, a full commercial kitchen, a performance stage and a stylish private-entry Green Room with its own bar.



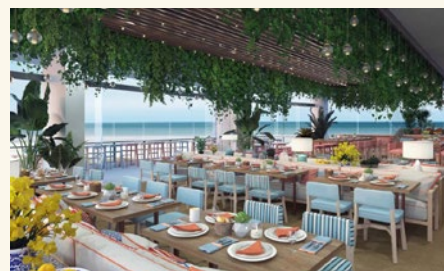
To market to market

Indulge in Australia's multiculturalism by taking over street food night market **Miami Marketta** for an evening of international cuisine paired with locally brewed craft beers and boutique wines.



Up your game

Enjoy a game at **Topgolf**. It's not the standard 18 holes at this new high-tech golfing hotspot, which offers options to please beginners and pros.



Kick back beachside

Enjoy unobstructed ocean views and drinks from a menu designed by an internationally acclaimed Australian bartender at **Hyde Paradiso**.

WHY NOT...

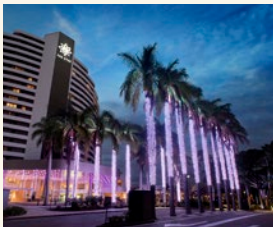


Have breakfast with the dolphins at **Sea World's Dolphin Beach**, before getting even more up-close to the dolphins in the shallows of the lagoon.



Charter a helicopter to **O'Reilly's Rainforest Retreat**. Nestled in the World Heritage-listed Lamington National Park, this eco-retreat offers guided wildlife encounters and rejuvenating spa treatments.





VENUES



The Island Glasshouse

- Contemporary event space a block from the beach
- 600sqm/6,460sq.ft of space with a banqueting kitchen and al fresco bar area
- Capacity for 350 people for dinner and 700 people for cocktail events



Burleigh Pavilion

- The beachfront venue recently had a A\$9 million renovation
- Two event spaces available, The Tropic restaurant and the more casual Burleigh Pavilion
- The combined venue can be hired exclusively for dinner for 500 or a cocktail event for 900



The Star Gold Coast

- The pillarless Event Centre Ballroom can host up to 880 for dinner
- Several other outdoor spaces including the new Poolside Events Lawn and the Garden Events Lawn can host 450 to 1,000 people for a cocktail event
- Two 5-star hotels offer more than 650 rooms on the site, including The Darling

More than
42,000
hotel rooms
in greater Gold
Coast region



WHAT'S NEW

The Langham, Gold Coast

Australia's third offering from luxury hotel brand **The Langham** opened in June 2022. Featuring 169 rooms in **The Jewel**, a three-tower oceanfront A\$1 billion development, the hotel includes a 618sqm/6,653sq.ft ballroom for events with up to 400 guests.



DID YOU KNOW?

The Gold Coast averages 300 days of sunshine each year and has more than 70km/44mi of beaches, including world class surf breaks – the destination hosts the opening event of the men's and women's world surfing tour each year.



JW Marriott Gold Coast Resort & Spa

Marriott International debuted its first JW property in Australia in December 2020, after an A\$35 million refurbishment and rebrand transformed Queensland's iconic 223-room Surfers Paradise Marriott Resort & Spa into the JW Marriott Gold Coast Resort & Spa.



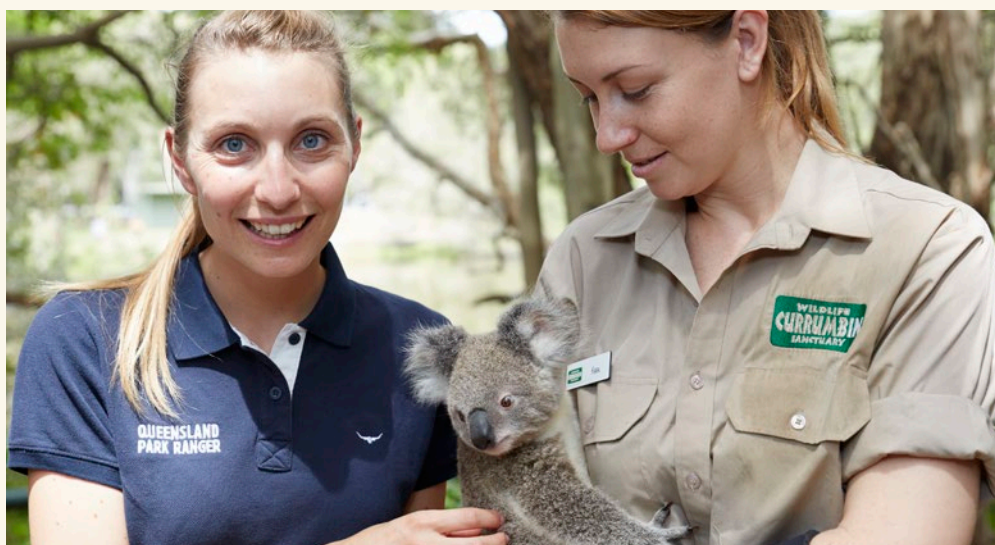
EXPLORE FURTHER

Currumbin Wildlife Sanctuary

Have iconic Australian animals make an appearance at events held at the Sanctuary, located towards the southern end of the Gold Coast or take the TreeTop Challenge which includes Australia's highest and fastest zipline experience.

Cabarita Beach

A short drive south of the Gold Coast, just over the state border in New South Wales, this popular surfing destination is home to **Halcyon House**, a 21-room luxury property that features poolside event space and activities such as paddle boarding and yoga.





HOBART

Set on a picturesque harbour, the capital of Australia's island state Tasmania has a thriving food and wine scene, adventures to be had in the great outdoors and the great indoors and breath-taking wild landscapes overlooked by luxury lodges not far away.



Access

Hobart Airport is serviced by domestic flights



Weather

Summer from Dec-Feb (average max. 22°C/72°F)

Winter from Jun-Aug (average max. 11°C/53°F)

EXPERIENCES



Take a wilderness journey at sea

Go to sea on a **Tasmanian Seafood Seduction** adventure with **Pennicott Wilderness Journeys**. Gather oysters and rock lobster along the way and watch your guide dive for wild abalone and sea urchin.



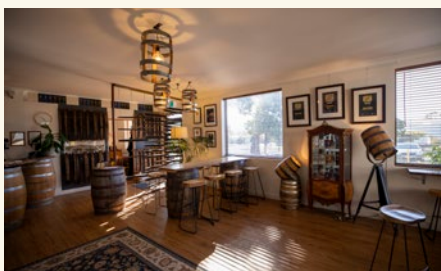
Experience Mona

Visit the unconventional **Museum of Old and New Art**, a subterranean place of wonder and experiment. The experience goes beyond the museum – there are also two restaurants, a winery and luxury accommodation onsite.



See the sights from a new angle

Paddle around Hobart's harbour, explore the city's cliffs, caves and beaches or plunge your group into Tasmania's rugged landscape on a multi-day kayaking adventure with **Roaring 40s Kayaking**.



Try the world's best whisky

Explore the whisky-making process at **Sullivan's Cove Distillery** and taste their French Oak Single Cask which was awarded "World's Best Single Cask Single Malt" at the World Whiskies Awards in 2019.



Meet a Tasmanian Devil

Join a Devil Tracker Tour to help monitor the progress of the local population of healthy wild Devils at the **Tasmanian Devil Unzoo** which immerses visitors into the Devil's natural habitat.



Feast on a farm

Have a feast at **Fat Pig Farm** in the Huon Valley, south of Hobart. Between courses guests can explore the farm to discover where their lunch comes from. Cooking classes and other tailored experiences are available for groups.

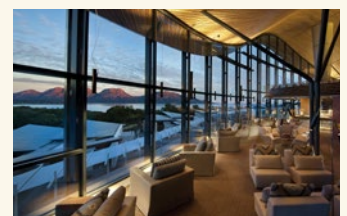
WHY NOT...

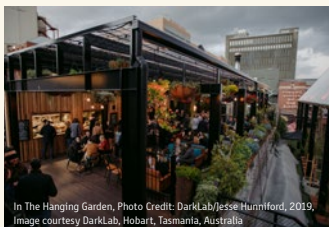
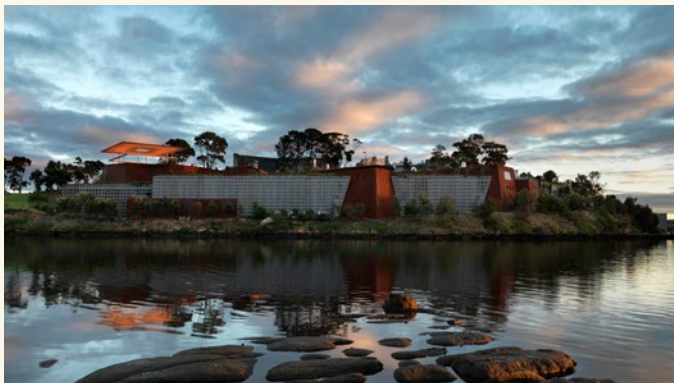


Get a local perspective of Hobart with **Hobart Walking Tours**. Expert guides can fill you in on the history of Hobart, give you a taste of the best Tasmania produce, show you around Hobart's notable beverage scene or develop a bespoke tour according to the interests of your group.



Marvel at Tasmania's natural beauty at boutique luxury lodge **Saffire Freycinet**, which overlooks Freycinet National Park. Enjoy the perks of life at the lodge including eating oysters directly from the water at **Freycinet Marine Farm** and taking a trip on Saffire's purpose-built vessel around **Schouten Island** for a closer look at the scenery and wildlife.





In The Hanging Garden, Photo Credit: DarkLab/Jesse Humford, 2019. Image courtesy DarkLab, Hobart, Tasmania, Australia



VENUES



Mona

- Seven indoor and outdoor venues with capacity for small and large groups, from 36 seated in the Wine Bar to over 2,000 on Mona's lawns
- Spaces within the museum itself include The Void, 13m/43ft underground and the Nolan Gallery
- Bespoke event concepts possible



In The Hanging Garden

- Multi-venue precinct taking up almost an entire city block
- Four spaces with capacity for 300 to 1,250
- The Garden, an upper tier garden deck area can host 300 guests
- Cathedral, an 18-metre-tall structure covering the lower tier garden can host up to 600 people cocktail style

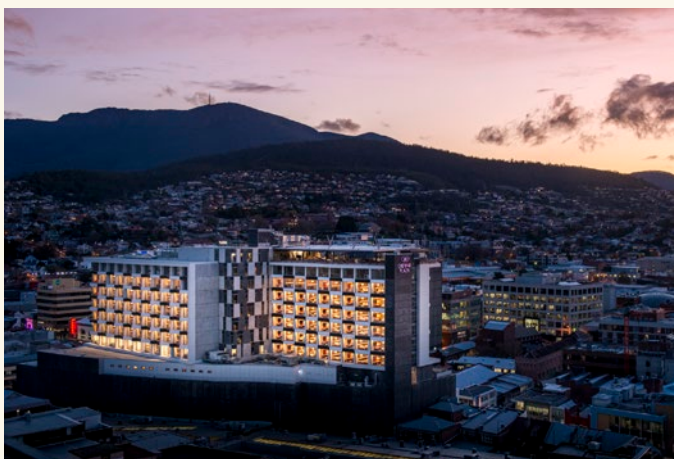


The Goods Shed

- Heritage listed venue with capacity for up to 1,555 people
- Arts, culture and community precinct also home to Australia's largest Edible Precinct garden



More than
3,500
hotel rooms
in the Hobart
region



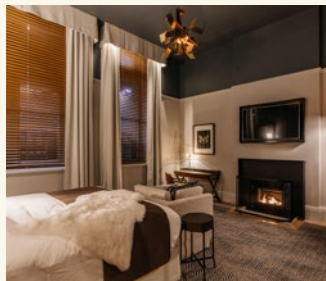
Crowne Plaza Hobart

The 235-room **Crowne Plaza Hobart** opened in the centre of Hobart in July 2020, offering Harbour and mountain views, two restaurants and six flexible event spaces.

WHAT'S NEW

The Tasman

The first **Marriott Luxury Collection** in Australia, The Tasman opened in December 2021 with 152 rooms and seven suites. The property blends heritage, Art Deco, and modern contemporary architecture across three wings and offers five event spaces.



DID YOU KNOW?

Around 3.5 million acres (1.4 million hectares) - almost a fifth of Tasmania's total size - is a World Heritage-listed wilderness area, encompassing coast, islands, rivers, peaks, valleys and button grass plains.



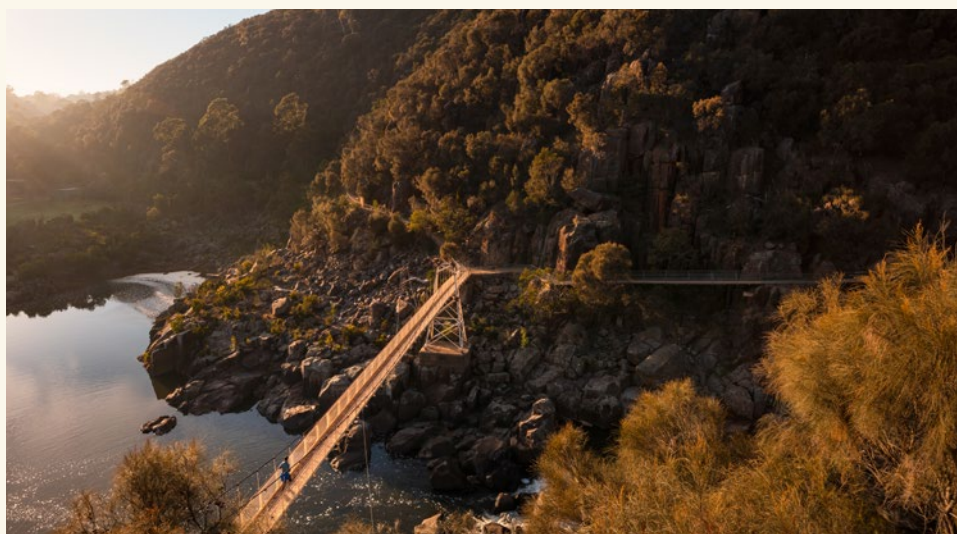
EXPLORE FURTHER

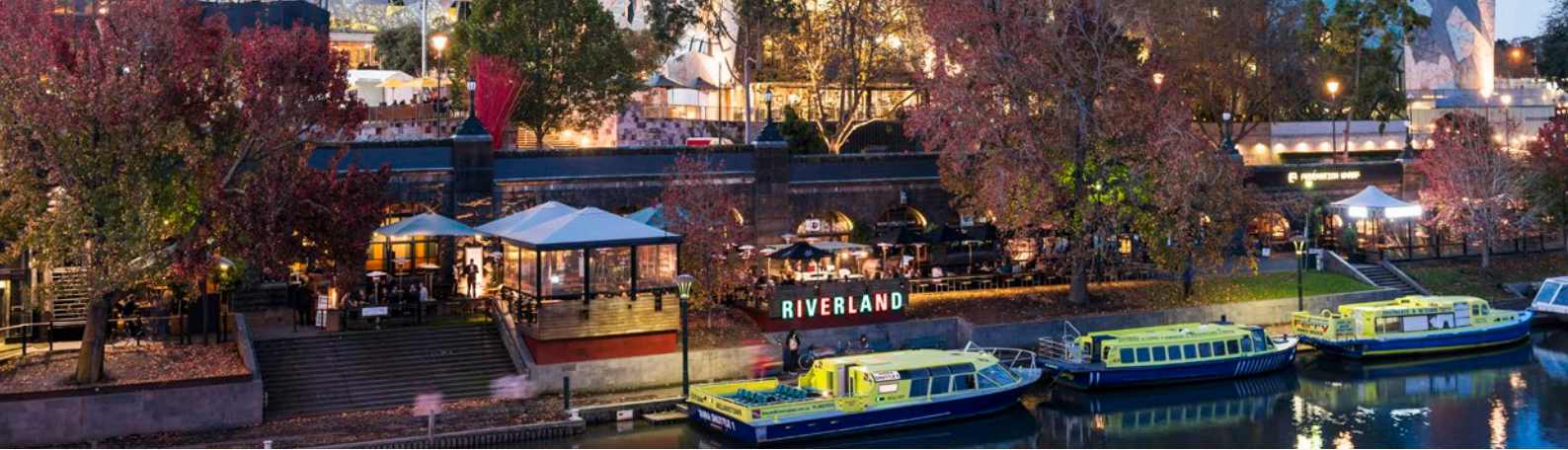
Launceston

See the north of Tasmania with a trip to the state's second largest city Launceston. Stay at **Peppers Silo Hotel** on the banks of the Tamar River, challenge yourself on the zipline or tree ropes course at **Hollybank Wilderness Adventures** or experience some of the most remote parts of northern Tasmania by taking to the skies with **Unique Charters**.

Cradle Mountain

Mix luxury with Tasmania's breath-taking wilderness at **Cradle Mountain Lodge**, on the edge of the World Heritage-listed Cradle Mountain-Lake St Clair National Park. Go wildlife spotting, learn how to fly-fish, take a guided walk through the National Park or canoe across Dove Lake.





MELBOURNE

Melbourne is a cultural and sporting hub. With a sophisticated and inventive culinary identity, the city is home to a myriad of restaurants and bars, while the **Varra Valley** and **Mornington Peninsula** wine regions are a short drive away.



Access

Melbourne Airport is serviced by international and domestic flights



Weather

Summer Dec-Feb
(average max. 25°C/ 77 °F)

Winter Jun-Aug
(average max. 14°C/ 57 °F)

EXPERIENCES



Dinner in a famous location

Host a unique dinner in **Margaret Court Arena** at Melbourne Park, home of tennis Grand Slam, the **Australian Open**. Up to 600 people can be hosted under the stars or under cover, with the world's fastest retractable roof.



Explore the laneways

Discover the delights of Melbourne's laneways with a street tour through **Locating Private Experiences** or take a foodie journey with **Hidden Secrets Tours**.



Dine fine

Try a new Melbourne menu by heading to fine dining establishment **Di Stasio Città**, voted best new restaurant in the Australian Gourmet Traveller Restaurant Awards 2020.



Marvel at the Twelve Apostles

See the iconic rock formations along the **Great Ocean Road** from above by helicopter or get closer with an event on the beach.



Event on a rooftop

Host a cocktail event for 550 or dinner for 400 guests with views of Melbourne's skyline at **Crown Aviary**, the third story rooftop event space above luxury hotel Crown Towers on Southbank.



Get culinary

Sharpen your pizza, pasta or sausage making skills with a class amongst the vines at **Green Olive at Red Hill Winery** on the picturesque Mornington Peninsula.

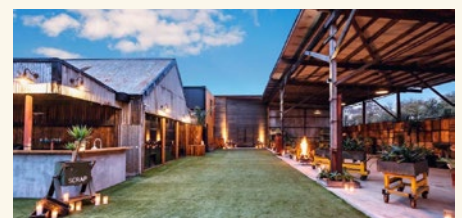
WHY NOT...



On the morning of the Melbourne Cup horse race, visit the mounting yard to have a photo with the 18ct solid gold trophy valued at A\$175,000 before it's handed over to the winner.



Host an event with a polished industrial feel at the **Timber Yard** in Port Melbourne. With a variety of indoor and outdoor spaces, the venue provides ample opportunities for sprawling events with experiential activations.





VENUES



Port Melbourne Yacht Club

- Coastal space less than 15 minutes' drive from the city centre, managed by Atlantic Group
- Beach views with floor-to-ceiling glass windows which open onto an overwater deck
- Flexible spaces host up to 300 guests with possibility to extend the event to the beach



The Ormond Collective

- A collection of five indoor and outdoor interconnected historical spaces in Melbourne's inner-city managed by The Big Group
- The smallest venue can seat 90 for dinner with the whole site capable of hosting 1,000 people



State Library of Victoria

- 10 unique event spaces including the soaring La Trobe Reading Room, managed by Showtime Event Group
- The Ian Potter Queen's Hall reopened in December 2019 after being closed to the public for 16 years

More than
37,000
hotel rooms
in the greater
Melbourne region



WHAT'S NEW

URBNSURF

Learn to surf at URBNSURF, a two-hectare (five acre) man-made surfing lagoon next to Melbourne Airport, which uses next generation technology to produce the perfect wave every time. The new precinct can host 2,000 people and is also home to the latest outpost of Australian dining institution Three Blue Ducks.



DID YOU KNOW?

With capacity for 100,000 spectators, the Melbourne Cricket Ground is one of the world's largest stadiums. The venue offers several unique event spaces, including the locker room where teams prepare for a big game.



The Ritz-Carlton Melbourne

The Ritz-Carlton Melbourne opened in March 2023, boasting 257 stylish rooms and suites hosted in a new 80-storey building. The hotel connects guests with Melbourne's creativity, diversity and culture, with a uniquely Melbournian décor and hyper-local culinary offerings.



EXPLORE FURTHER

Phillip Island

Only 90 minutes from Melbourne, Phillip Island features coastal scenery and plenty of Australian wildlife. See the famous daily parade of little penguins, learn about koala conservation and take a step back in time at Churchill Island Heritage Farm.

Mornington Peninsula

Enjoy the ocean views at Pt Leo Estate, before lunch at the winery's award-winning 40-seat fine dining restaurant Laura. Take a stroll around the estate's sculpture park, then stay the night at the Jackalope Hotel, which has 45 designer rooms.





PERTH

The capital city of Western Australia is home to one of the biggest inner-city parks in the world, Kings Park and Botanic Garden. Located on the banks of the Swan River, Perth offers a range of outdoor experiences, team-building activities and event spaces.



Access

Perth Airport is serviced by international and domestic flights



Weather

Summer from Dec-Feb (average max. 31°C/87°F)

Winter from Jun-Aug (average max. 19°C/66°F)

EXPERIENCES



Sail the Swan River

Enjoy a casual cruise or try your hand on an elite racing yacht with **Swan River Sailing**. Groups of up to 11 people per vessel are overseen by an experienced sailor.



Swim with dolphins

See bottlenose dolphins around the Shoalwater Islands in Rockingham and swim with them from September to May with **Perth Wildlife Encounters**.



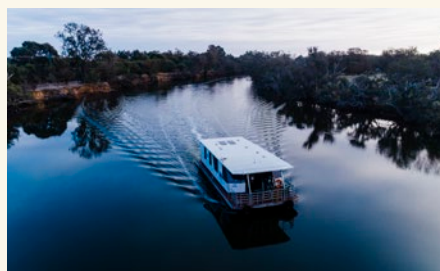
Hop over to an island

Visit Rottneet Island, home of the quokka, where you can see the sights via Segways, bicycle or complete a high-powered circumnavigation of the island in a **Rottneet Express Eco Express Adventure Boat**.



Taste local Indigenous cuisine

Join local Wardandi Bibbulmun woman Dale Tilbrook to learn about the bush tucker of the Noongar traditional owners with **Dale Tilbrook Experiences**.



Catch your own lobster lunch

Pull crayfish pots straight from the ocean as part of **Mandurah Cruises' Wild Seafood Experience** then enjoy a five-course lunch – including your freshly barbequed lobster – onboard.



Uncover Perth with a local

Explore Perth's laneways and arcades with a **Two Feet and a Heartbeat** walking tour or have an Indigenous guide from **Go Cultural** show you around city precincts.

WHY NOT...



Enjoy the best of local produce plated with intricate minimalism at **Fleur**, set within Perth's Heritage listed Royal Hotel. The private dining room seats 12-14 guests, and the restaurant's main dining room seats 45.



Head north of Perth for a visit to **the Pinnacles**, where you can enjoy a sunset picnic or go stargazing after dark amongst these naturally occurring limestone rocks, standing up to 3.5m/11.5ft high





VENUES



Optus Stadium

- Named the world's most beautiful stadium in 2019, with seating for 60,000 spectators
- 18+ event spaces for up to 2,000 delegates
- Dinners can be staged on the playing field



Government House

- Hire the gardens at Government House for small or large groups
- The Ballroom, Supper Room and Terrace inside the House are also available for events



Perth Mint

- The oldest operating Mint in Australia
- Indoor and outdoor event space with capacity for 350 people standing and 200 seated for dinner

More than
13,500
hotel rooms
in the greater
Perth region



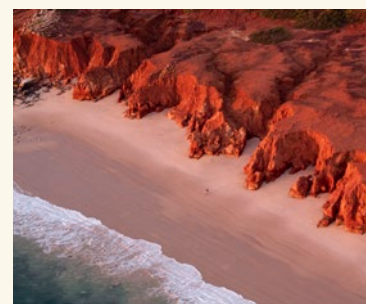
WHAT'S NEW

The Ritz-Carlton

With 205 rooms, including 18 suites, this luxury hotel in Elizabeth Quay overlooks the Swan River. Notable touches are the rooftop infinity pool and the Songbird lounge bar, which can host up to 150 people for a cocktail event.

Hotel openings

The 250-room hotel **Adnate** opened in October 2019 and features a 25-storey-high exterior mural, painted by the hotel's namesake, Australian street artist Matt Adnate. **Sapphire Rottnest** offers 80 spacious rooms on the beachfront and the tranquil native surrounds of Rottnest Island. Featuring multiple outdoor event and dining spaces and stylish poolside cabanas.



DID YOU KNOW?

Western Australia is Australia's largest state, covering 2.5 million sq. km/ 965,250 sq. mi – larger than every country in Europe except Russia – with over 12,889km/8,000mi of coastline. It also enjoys several different climates – Mediterranean in Perth and the state's southwest, dry conditions in the desert to the east and a tropical climate in the far north.



EXPLORE FURTHER

Coral Coast

The Coral Coast north of Perth boasts two World Heritage-listed sites – **Ningaloo Reef**, where you can swim with whale sharks, manta rays and humpback whales, and **Shark Bay**, known for its natural diversity. This 1,100km/684mi stretch of coastline is also home to the visually stunning **Pink Lake**, also known as **Hutt Lagoon**, best viewed from above via a scenic flight.

Margaret River

Visit the **Margaret River region** to sample some of Australia's best wine, including at **Leeuwin Estate**. Nearby, **Busselton** has the longest wooden jetty in the southern hemisphere. Enjoy 360-degree ocean views at events on the jetty or event in the underwater observatory beneath it.





SYDNEY

Sydney's harbour and opera house are just the start of what Australia's oldest city offers. Get a different perspective through Sydney's rich Indigenous history, sample the city's ever evolving culinary scene and have your group explore new precincts and those loved by Sydneysiders themselves.



Access

Sydney Airport is serviced by international and domestic flights



Weather

Summer from Dec-Feb (average max. 26°C/78°F)

Winter from Jun-Aug (average max. 17°C/63°F)

EXPERIENCES



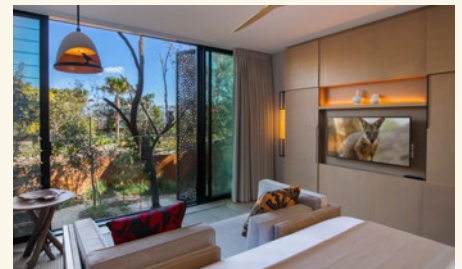
See Sydney differently

See Sydney from 134m/440ft above sea level by climbing to the summit of the Sydney Harbour Bridge with **BridgeClimb Sydney**. Added extras include live music and canapes at the summit.



Hit Bondi Beach

Take a surfing lesson with **Let's Go Surfing** or look out over the beach at sunset with a drink in your hand at **Icebergs Dining Room and Bar**.



Do the zoo in luxury

Close encounters with native Australian animals and dinner at the exclusive **Me-Gal** restaurant are all part of the experience at the luxurious **Wildlife Retreat at Taronga**.



Dinner on the water

Have dinner with a view of Sydney Harbour that evolves with each course aboard the new **Journey Beyond Cruise Sydney**. Private charter and exclusive use available for up to 90 dinner guests.



Make your own gin

Create your own signature gin from a selection of pure botanical ingredients at award-winning craft distillery **Archie Rose**.



Indigenous insight

Experience Sydney's rich Aboriginal culture with **The Rocks Aboriginal Dreaming Tour from Dreamtime SouthernX**.

WHY NOT...



Travel with **Sydney Seaplanes** to the Shellar door of **Broken Bay Pearl Farm**. As part of their Ultimate Pearl Farm Experience, you'll harvest your own rare Akoya pearl directly from the waters of the Hawkesbury River.



Sample the best of Sydney's fine dining in private dining rooms with spectacular views of Sydney Harbour including at **Aria**, **Quay** or **Bennelong**.





Vallamundi Rooms at the Sydney Opera House

- Event space on the north side of the House for up to 400 guests cocktail style
- Outside uncovered terrace area also included in venue hire



Luna Park Sydney

- 11 venues within the harbourside precinct with capacities from 200 people to 2,950 in the Big Top
- A takeover of the whole precinct is possible offering 10,000sqm/107,640sq. ft for groups of up to 8,000 people



Cockatoo Island

- World Heritage listed historical island in Sydney Harbour
- Can host events for 200 to 5,000 people across three precincts – the Industrial Precinct, the Convict Precinct and the Eastern Apron

More than **42,900** hotel rooms in the greater Sydney region



WHAT'S NEW

Campbell's Stores

The recently restored and reopened harbourside Campbell's Stores precinct is home to fine dining restaurants **6Head** and **Harbourfront Seafood Restaurant** with more restaurants set to open. The precinct is also a versatile and sought-after event venue for small and large groups with exclusive use of the precinct and its forecourt for up to 5,000 people.

Capella Sydney

Spanning eight levels of a Heritage-listed sandstone building in the heart of Sydney, Capella Sydney celebrates the building's original characteristics, from the majestic marble-clad foyer, bespoke function rooms and Brasserie 1930, the hotel's contemporary restaurant.



DID YOU KNOW?

Sydney Fish Market is the largest market of its kind in the Southern Hemisphere. Groups can see live demonstrations by top Sydney chefs before sharpening their own culinary skills at **Sydney Seafood School**, located within the market building. The market is set to benefit from a full redevelopment with a completely new venue scheduled to open in 2024.



EXPLORE FURTHER

Hunter Valley

A 45-minute helicopter flight – or a two-and-a-quarter-hour drive – north of Sydney is wine growing region the Hunter Valley. Enjoy fine dining, produce direct from the maker and experiences like hot air ballooning and grape stomping.





ULURU

In Australia's Red Centre, experience the Uluru and Kata Tjuta rock formations with sunrise tours and starlit dinners, and be immersed in Aboriginal traditions. Uluru delivers the quintessential outback adventure.



Access

Ayers Rock Airport is serviced by domestic flights



Weather

Summer from Dec-Feb (average max. 37°C/98°F)

Winter from Jun-Aug (average max. 21°C/70°F)

EXPERIENCES



Taste bush tucker

Learn about native bush foods with a tasting of seasonal fruit, seeds and spices at **Ayers Rock Resort**.



Experience Field of Light

Stroll through Bruce Munro's immersive art installation at sunrise or after dark. For an even bigger experience, pair it with a **Sounds of Silence** dinner overlooking the lights.



Discover dot painting

Learn about traditional aboriginal art, symbols and tools and create your own dot painting masterpiece at **Maruku Arts**.



Ride a camel

Explore the great Central Australian desert on a bespoke camel-riding tour with **Uluru Camel Tours**.



Watch the sunrise

Watch the sun rise over Uluru and Kata Tjuta while you snack on freshly-made damper.



Dine under the stars

Host an exclusive dining experience under the stars at **Tali Wiru**. Start with sparkling wine and canapés as the sun sets over Uluru.

WHY NOT...



Take a helicopter or scenic flight around Uluru and Kata Tjuta to capture the sheer enormity and raw beauty of the Australian outback.



Stay in one of 15 luxury tents or the Dune Pavillion at **Longitude 131°** nestled among the ancient dunes at Uluru-Kata Tjuta. Exclusive group buyouts are available.





VENUES



Uluru Meeting Place

The award-winning Uluru Meeting Place at Ayers Rock Resort can provide theatre style seating for up to 420 people.



Ayers Rock Resort

- 650+ rooms
- 5 accommodation options including the 5-star Sails in the Desert



WHAT'S NEW

Lighting up the outback sky

A new immersive light and sound show is set to launch at Ayers Rock Resort, combining ancient Anangu storytelling with state-of-the-art, drone and laser light technology. The Sunset Dinner and After-Dark experiences can be booked exclusively for groups.



DID YOU KNOW?

Uluru changes colour throughout the day. Experience its various shades from every angle with a pre-dawn camel tour, afternoon helicopter ride, sunset cocktail party or dinner under the stars.

Glamping in Kings Canyon

Kings Canyon Resort has welcomed six permanent luxury tents for glamping. Each tent has its own ensuite, split air-conditioning system and an outdoor deck with seating.



EXPLORE FURTHER

Kakadu National Park

The largest national park in Australia at 20,000sq. km/12,427sq. mi, Kakadu is one hour and 40 minutes' drive east of Darwin. **Aurora Kakadu** in the heart of the wetlands offers 132 rooms and a function venue for up to 120 people. In Darwin, discover beachside dining venues, the five-star **Mindil Beach Casino Resort**, and explore the pristine waterways of the region by boat or from the air.

The Ghan

Charter a 50-minute flight to Alice Springs to connect with the legendary Ghan train, one of the world's great rail experiences that runs from Darwin to Adelaide.





WHITSUNDAYS

The Whitsundays is made up of 74 islands located in the World Heritage-listed Great Barrier Reef. Home to some of Australia's best beaches, the region offers land, air and water experiences, along with a host of venues to create an unforgettable incentive trip.



Access

Two airports, Hamilton Island Airport and the Whitsunday Coast Airport at Proserpine, are serviced by domestic flights

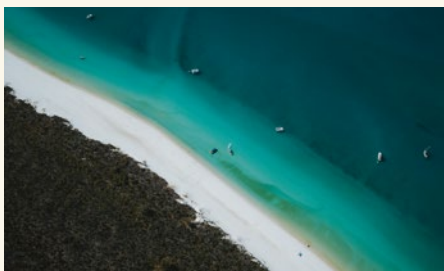


Weather

Summer from Dec-Feb (average max. 30°C/86°F)

Winter from Jun-Aug (average max. 22°C/72°F)

EXPERIENCES



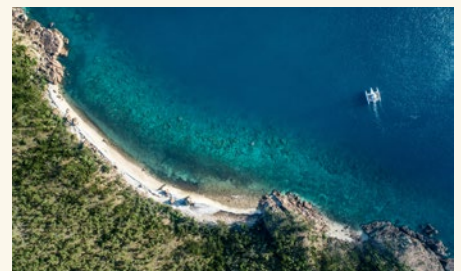
Sail to Whitehaven Beach

Enjoy an exhilarating sailing trip aboard 20m/66ft catamaran **S.V. On The Edge**, before anchoring at the famous Whitehaven Beach for a picnic lunch.



Play Island Survivor

Take the **Survivor Challenge** on **Hamilton Island**, building your team with a set of physical activities in a friendly competition.



Give back to the Reef

Take a coral rejuvenation class on Blue Pearl Bay, as part of **InterContinental Hayman Island Resort's Insider Collection** of experiences and initiatives.



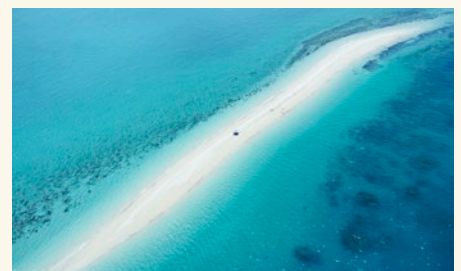
Sunrise yoga

Kick-start your day with a sunrise yoga session on Catseye Beach or with one of Hamilton Island's best views, atop One Tree Hill.



See the Reef from above and below

Take a scenic helicopter tour over Heart Reef with **Hamilton Island Air**. Land at the new **Heart Reef Pontoon** and unwind with canapés or snorkel the surrounding lagoon reef.



Cocktails on a tidal island

Host sunset cocktails on **Langford Island**, a sand spit a seven-minute boat ride from Hayman Island, which appears only as the tide permits.

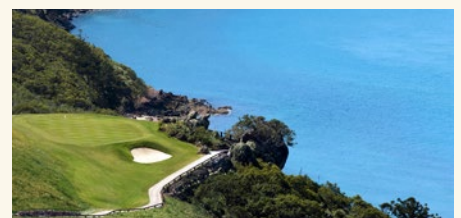
WHY NOT...



Take a luxury sunset cruise around the Whitsundays for up to 80 guests with **Ocean Dynamics**.



Play a game of golf at **Hamilton Island Golf Club's** 18-hole championship course, with views of nearby islands.





VENUES



InterContinental Hayman Island Resort

- 168-room private island resort available for exclusive use
- 15 indoor and outdoor spaces across the island with capacity for up to 330 guests in a single location
- Spaces include beaches, lawns, a private dining room and formal or tropical gardens



qualia

- 60 private pavilions set in a secluded gated resort on Hamilton Island
- Three event spaces – Pebble Beach restaurant at the water's edge, the Long Pavilion – including a private dining room and private deck areas – and the Beach House
- Available for exclusive use



Daydream Island

- 277-room resort available for exclusive use
- 6 indoor and outdoor event spaces with capacity for up to 250 for dinner
- The resort's 6 restaurants and bars are also available for exclusive use

Hayman Island also has a range of accommodation options for larger groups and indoor and outdoor event venues for varying groups sizes.



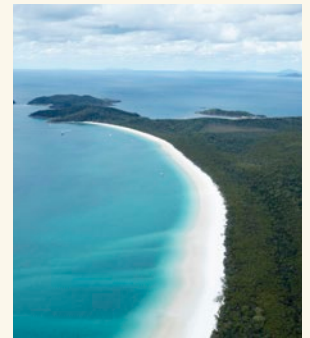
WHAT'S NEW

Cruise Whitsundays

Cruise Whitsundays has debuted Australia's first underwater ocean accommodation, adding two **ReefSuites** to their pontoon which already offers the chance to sleep under the stars on the Great Barrier Reef with 12 **ReefSleep** luxury Australian bedrolls or "swags" on deck.

Hamilton Island

Hamilton Island opened its new **Beach Pavilion** in December 2019, a flexible beach-side venue which can be fully enclosed or al fresco and can host a seated dinner for 280 people. The new venue complements an extensive offering on the island for incentives, including a variety of event spaces and 10 private dinner venues.



DID YOU KNOW?

Whitehaven Beach is frequently classed among the world's best beaches, thanks to its pure white silica sand and turquoise waters.



EXPLORE FURTHER

Brisbane

The Queensland capital is a two-hour flight from the Whitsundays. Stay at the 312-room **W Brisbane** and explore the nearby **Howard Smith Wharves** precinct, which includes several event spaces, craft brewery and contemporary restaurants.

Sydney

A two-and-a-half-hour flight from the Whitsundays, Sydney is home to some of Australia's most iconic landmarks. Climb the **Sydney Harbour Bridge** or take a behind-the-scenes tour of the **Sydney Opera House**. Stay at the luxurious **Sofitel Darling Harbour**, in the vibrant Darling Harbour precinct.

