

# THE UK'S LEADING CONSTRUCTION SHOW

## EVENT SPONSORSHIP

[www.londonbuildexpo.com](http://www.londonbuildexpo.com) | [info@londonbuildexpo.com](mailto:info@londonbuildexpo.com)

OLIVER  
KINROSS





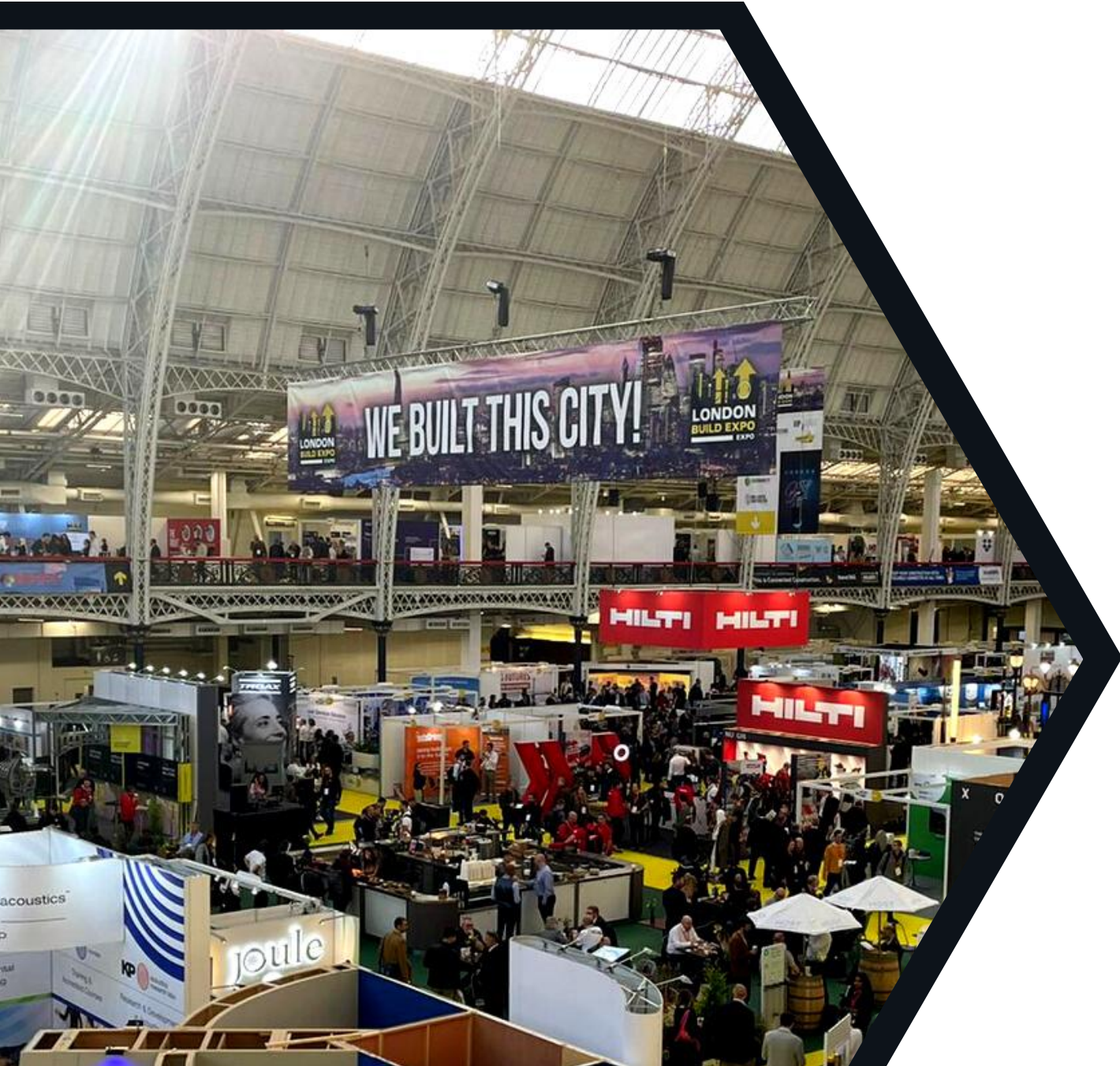
# CONTENTS PAGE

PACKAGE DETAILS	PAGE
EVENT STATS	3
EVENT STAGES	4
FEATURED EXHIBITOR	5
LONDON BAR	6
REGISTRATION SPONSOR	7
BUILT ENVIRONMENT NETWORKING HUB	8
WOMEN IN CONSTRUCTION	8
LANYARD SPONSOR	9
SHOW BAG	9
SHOW MAP	10
BADGE SPONSOR	10
VIP LOUNGE	11
CO-WORKING HUB	11
FREE DRINK TOKENS	12
FLOORPLAN	12
STAIRCASE SPONSOR	13
BALCONY BANNER	13
WATER STATION	14
PHONE CHARGING	14
RECENT SPONSORS	15





# EVENT STATS



23,915	PRE-REGISTERED ATTENDEES	28,909
8,909	ATTENDEES	12,611
268	EXHIBITORS	323
460	SPEAKERS	520
60	EVENT PARTNERS	86
8	EVENT STAGES	8
550	EVENT AMBASSADORS	1000+

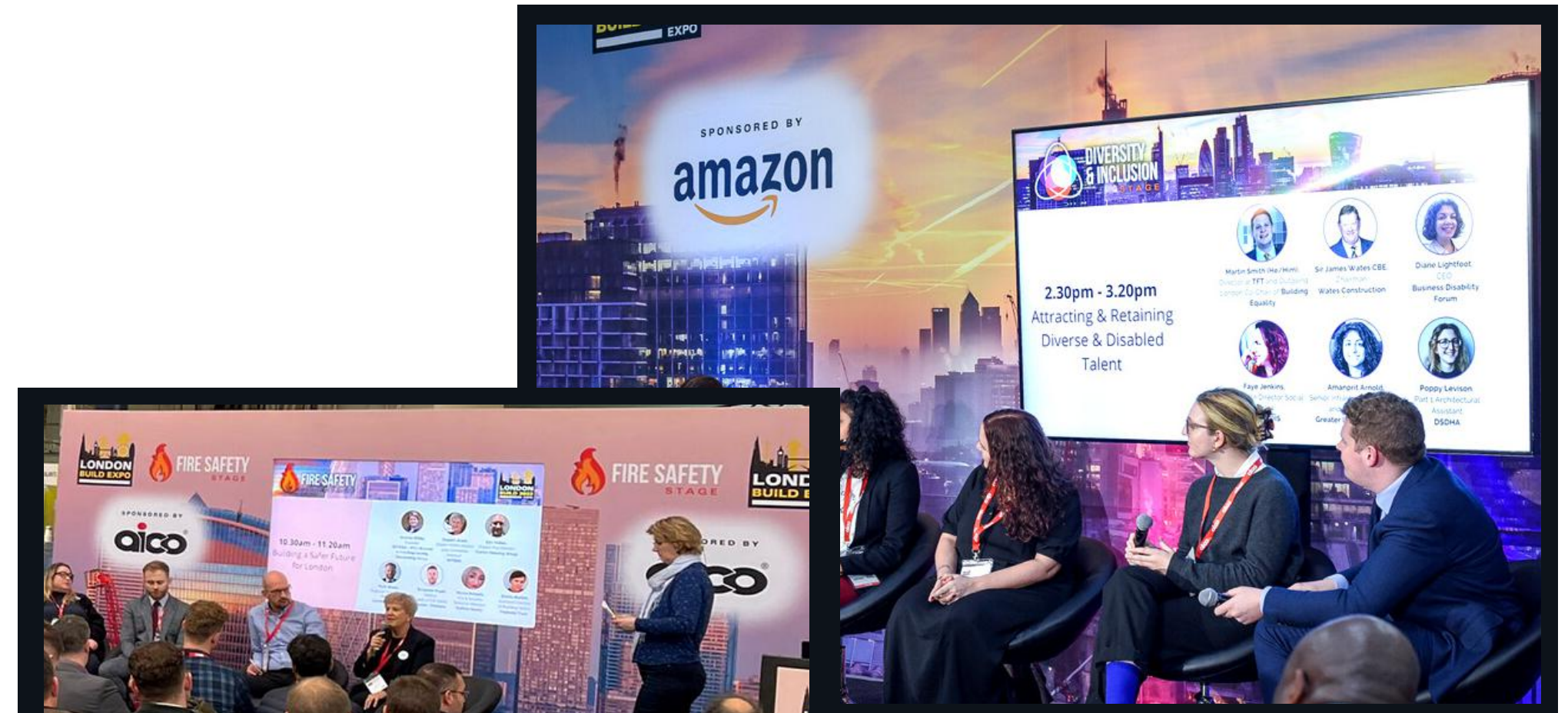


# EVENT STAGES

**£16,950**

Sponsorship includes branding on stage graphics, as well as opportunity to host your own panel discussion on stage. Data capture of all scanned attendees to all sessions across both days of the show

- Branded hanging banner
- Branded lectern
- Branded back wall
- Seat on 1x panel discussion
- Attendance data from your stage over the 2 days
- Lead scanner
- Online show preview branding
- Online floorplan branding
- Enhanced online branding





# FEATURED EXHIBITOR

**£2,995 (for exhibitors) £3,990 (non-exhibitors)**

Enhance your presence at London Build Expo by joining a panel discussion alongside prospective buyers! Data capture of everyone who watches your session.

- Take part in a 50 minute panel discussion on a stage of your choice alongside prospective clients
- Data capture of all attendees in your session, sent to you after show
- Premium listing on the website and show preview
- Additional branding at the show on sponsor boards





# LONDON BAR

**£14,950**

The London Bar is the heartbeat of the show where attendees come to network and unwind over a drink and snacks. This exclusive opportunity gives offers a great option for a creative sponsorship within an area of high attendee footfall.

- Branded hanging banner
- Live musician / DJ
- Branded bar Area
- Evening networking drinks on Day 1





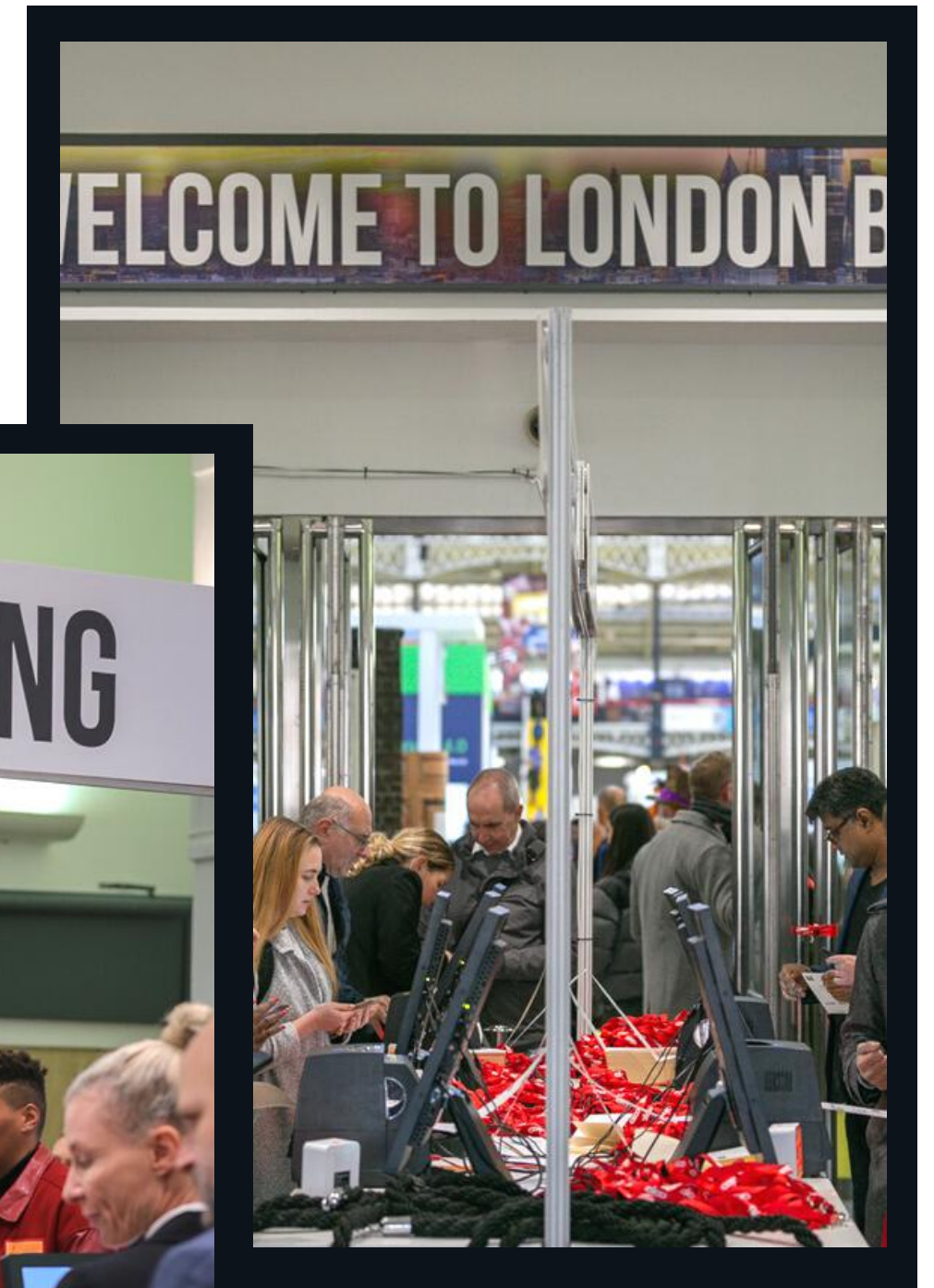
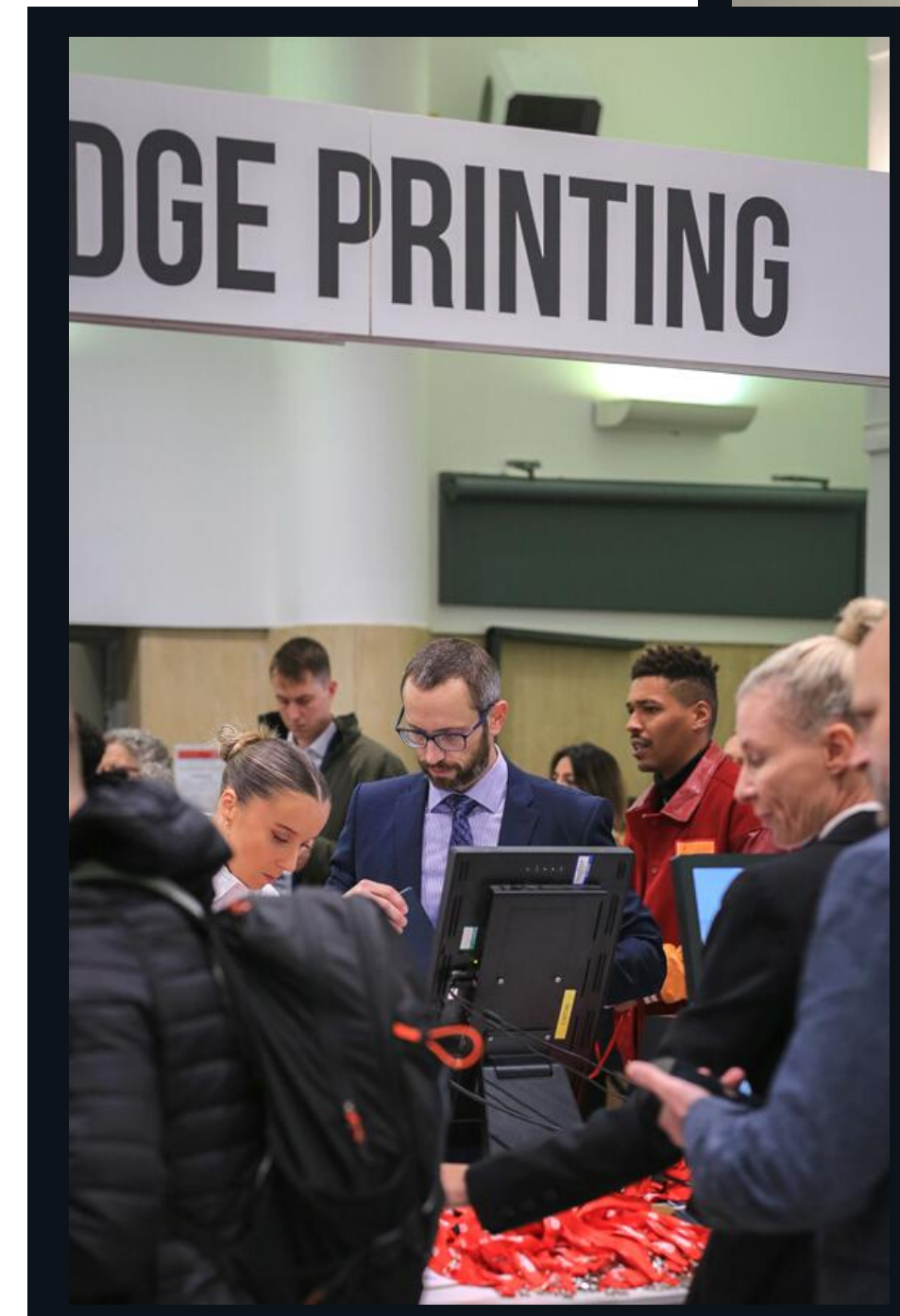
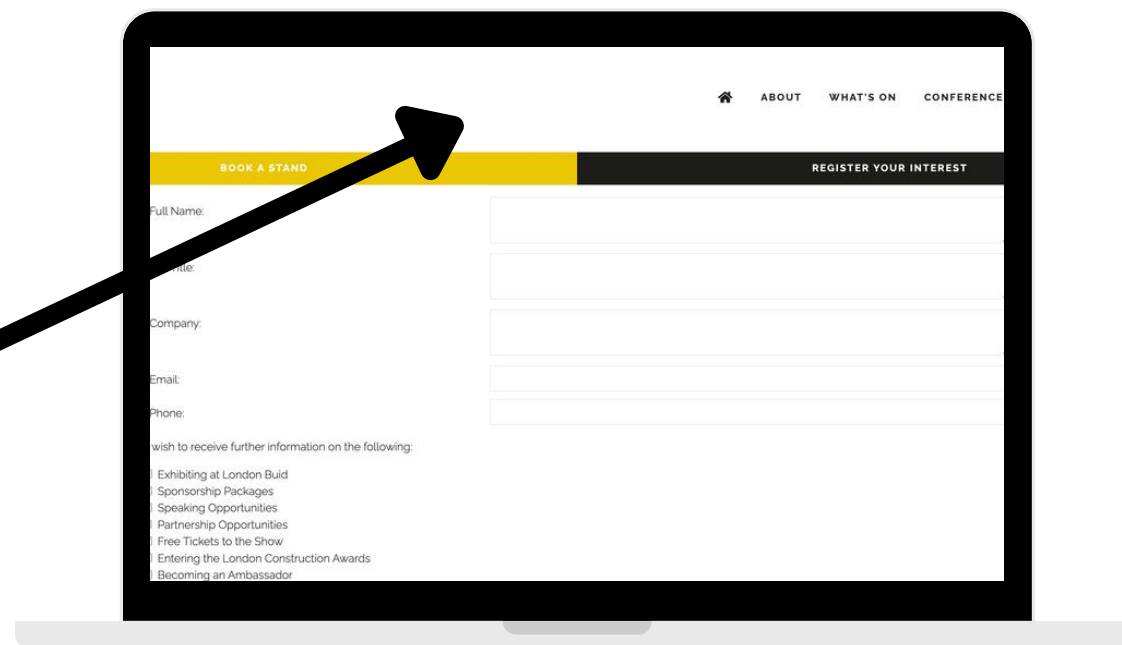
# REGISTRATION SPONSOR

**£12,950**

The Registration Sponsor will be the first organisation that all attendees will see when entering the event. Be the first organisation associated with the show upon their arrival! Ensure your brand is the very first and last to be seen as visitors and exhibitors enter and leave the event by becoming the registration area sponsor.

Sponsorship package includes branding on the online registration system (get your message and branding in front of all preregistered visitors, exhibitors and media).

**YOUR  
LOGO  
HERE**





# BUILT ENVIRONMENT NETWORKING HUB

**£16,950**

Exclusive opportunity to sponsor the main networking Hub at London Build. Sponsorship include stage graphic, data from all networking sessions and the opportunity to host your own networking session. One of the most sought after sponsorship options at London Build.



# WOMEN IN CONSTRUCTION

**£7,950**

Take exclusive sponsorship of the Women in Construction Networking event at London Build. London Build hosts the largest Women in Construction event in the UK and is supported by a large team of influential ambassadors who have made a significant impact in the industry, ensuring that we continue to drive change in the built environment.





# LANYARD SPONSOR

**£14,950**

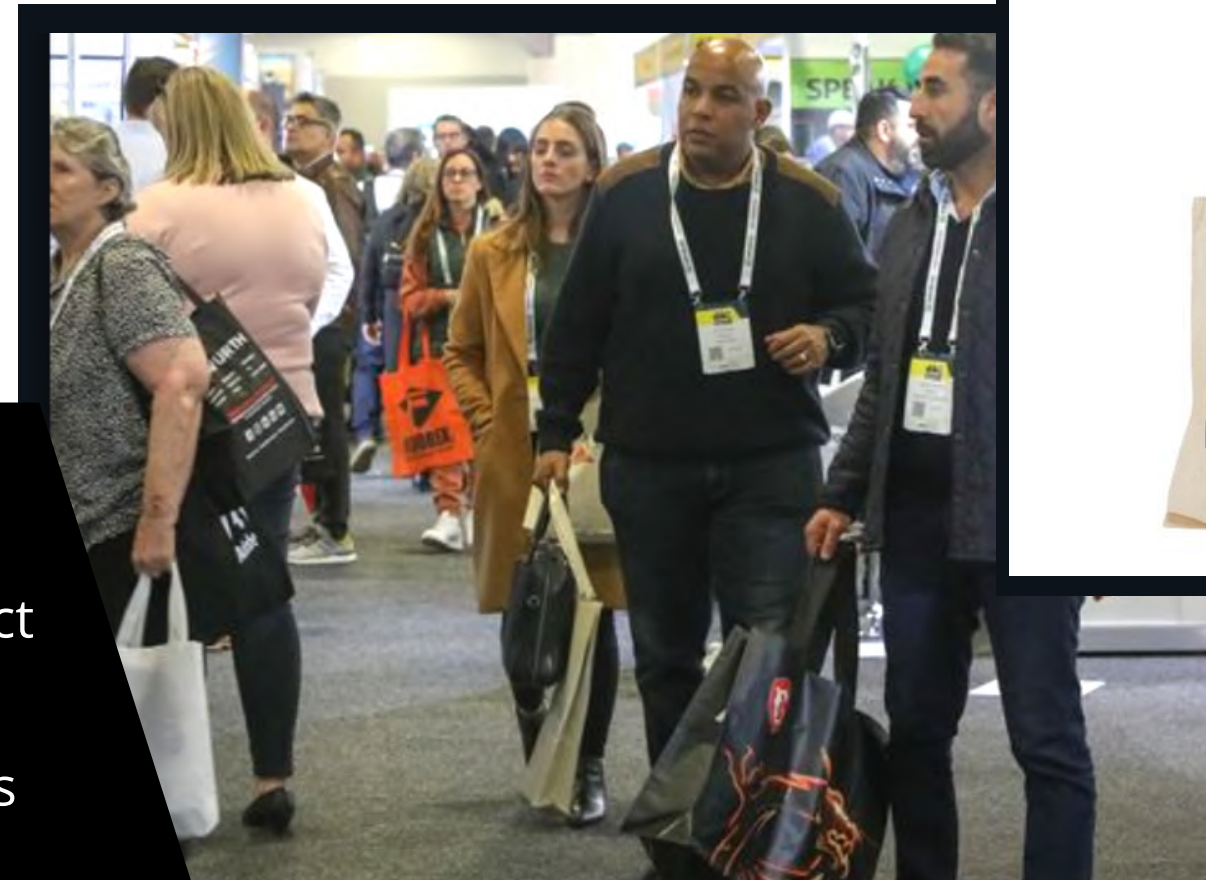
One of the most sought after sponsorship items at London Build. Every single attendee will be wearing a lanyard with your company name / logo printed on it. A fantastic way to raise brand awareness.



# SHOW BAG

**£12,950**

Place your organisation at the front and centre of the event as your bags are handed to every VIP buyer and visitor upon entry to the show. This is the perfect sponsorship to maximise your branding to all visitors, providing excellent visibility throughout the event, as each visitor will be carrying your show bag and logo around with them! As well as branding on-site, visitors take these bags away with them ensuring your sponsorship lives on well beyond the event.

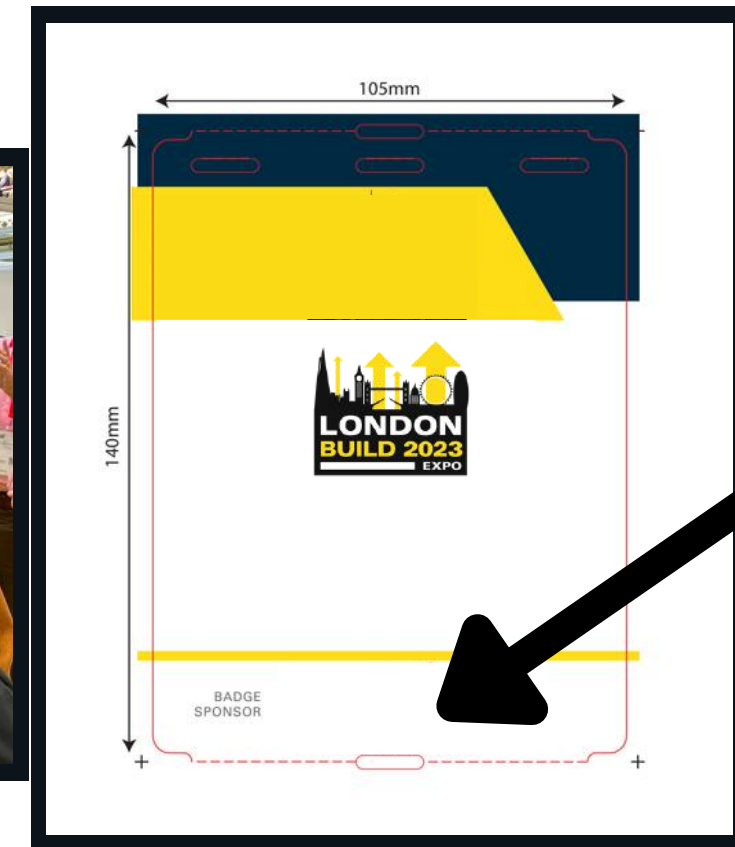




# BADGE SPONSOR

£10,950

- Every attendee, exhibitor and speaker will need a badge to enter the venue
- Have your logo printed on every single badge



**YOUR  
LOGO  
HERE**

# SHOW MAP

£6,950

- Branded show map
- Distributed to all attendees at registration area
- Also branding on the Maps around the hall

**YOUR  
LOGO  
HERE**





# VIP LOUNGE

**£14,950**

Your dedicated VIP lounge with comfortable seating and complimentary refreshments. Access restricted to your own clients and event VIP's.



# CO-WORKING HUB

**£8,950**

- High visibility area used by attendees to catch up with work and discuss business
- Branded work space area
- Enhanced online branding





# DRINK TOKEN

**SOLD OUT**

Be the most popular company at the show with your logo featured on the free drink tokens handed out to all attendees over the two days.



# FLOORPLAN SPONSOR

**SOLD OUT**

Incredible visibility of your hyperlinked logo featured on the floorplan viewed by 100,000+ in the lead up to the show.

**YOUR  
LOGO  
HERE**





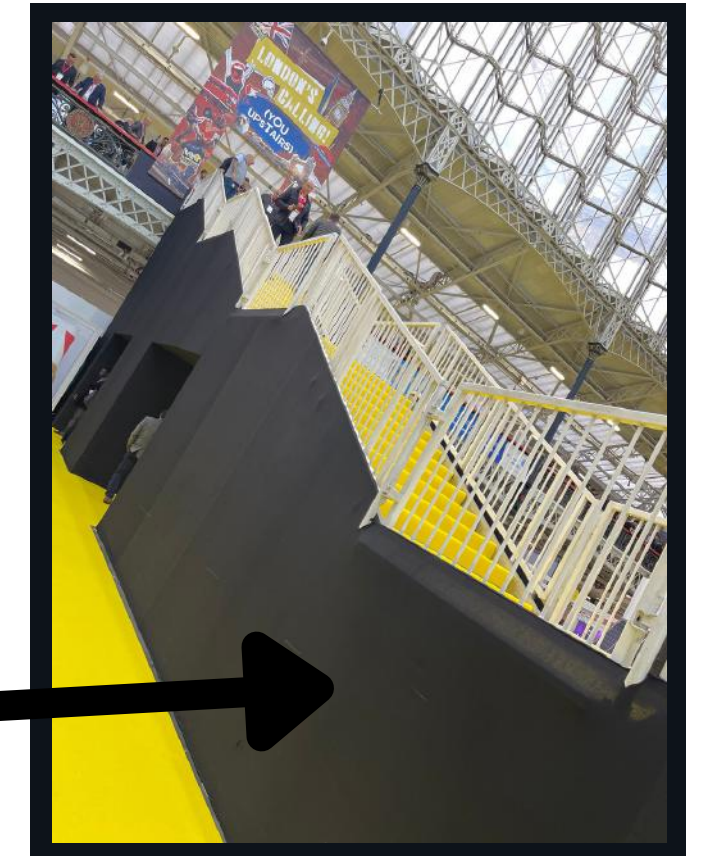
# STAIRCASE SPONSOR

**£10,000**

Add your logo, branding / messaging to the staircase risers on the main staircase going up to the gallery level. Opportunity includes branding of each riser plus the landing. A great way to raise brand awareness to everyone at the show.



**YOUR  
LOGO  
HERE**



# BALCONY BANNER

**£1,750 for Exhibitors**

**£2,750 for non Exhibitors**

Enhance your visibility at London Build by adding a hanging banner to the balcony. Approximate size: 10m x 1m.

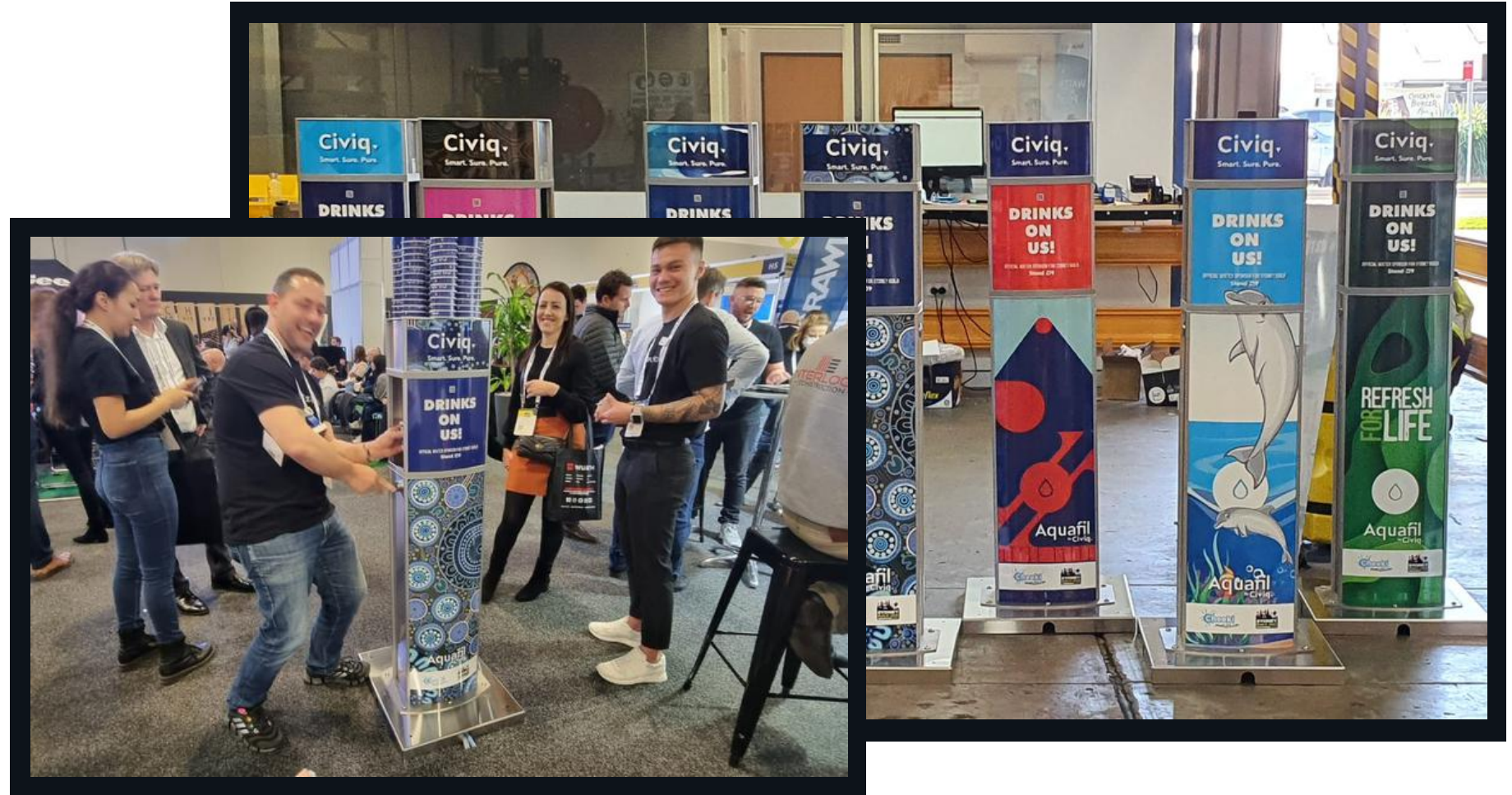




# WATER STATION

**£9,950**

Help us go green and promote your business at the same time! This sponsorship package provides branded water stations across the venue, next to the conference stages in high footfall areas. Each water station can include your logo & branding, any promotional message or general information of your choosing.



# PHONE CHARGING

**£10,000**

Branded phone charging stations around the hall.





# OUR 2022 SPONSORS INCLUDE

## ARCHITECTURE STAGE



## BIM & DIGITAL CONSTRUCTION STAGE



## DIVERSITY & INCLUSION STAGE



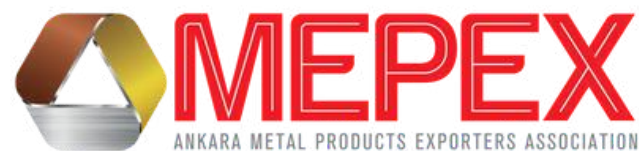
## FIRE SAFETY STAGE



## SUSTAINABILITY STAGE



## VIP LOUNGE



## BUILT ENVIRONMENT NETWORKING HUB



## WOMEN IN CONSTRUCTION



## LANYARD

