

London Build Sustainability Summit

Graham Edgell - Morgan Sindall Group

November 2019

Director of Sustainability and Procurement

Director and Founding partner of the Supply Chain Sustainability School

Chair of the Infrastructure School

London Mayors Climate Leaders

CIPS Construction Council

UKGBC Gold Leaf member

Validated Science Based Targets

CDP - A- Rated Business



The Supply Chain Sustainability School

Founded in 2012

Morgan Sindall Group, Skanska, Kier, Aggregate Industries, Wilmott Dixon, Lendlease, Sir Robert McAlpine, Action Sustainability

ANOTHER INITIATIVE SET TO FAIL?



88 Partners leading our work



World Class, Collaborative Learning

The School is a collaboration between clients, contractors and first tier suppliers who want to build the skills of their supply chains.

[OUR PARTNERS](#) >

Search our catalogue of free learning resources

[ASSESS NOW](#) >[RESOURCES FOR YOU](#) >

Our members love learning with us

Why the Supply Chain
Sustainability School works

[ABOUT US](#) >

We Share

We share knowledge and resources and our direction is led by our Partners and members.



We Deliver

We deliver measurable impact through dynamic leadership.



We Inspire

We inspire our members and Partners to drive positive change.



We Exemplify

We exemplify respect for the planet, our colleagues and wider society.



FREE Workshops

We offer free learning opportunities to build skills to deliver a sustainable built environment.



Individual Learning

Our learning is tailored to individual companies to ensure best practice in all fields.

COMPETENCY ▼

TOPIC ▼

SUBTOPIC ▼

MARKET ▼

FORMAT ▼

RATING ▼

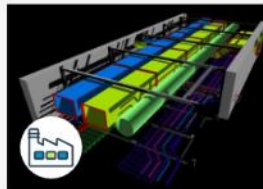
All resources

Showing 12 of 2456 results



BIM for Dummies

BIM for Dummies series contains five fast-paced and fun videos



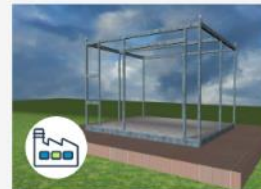
Functional Requirements Spec & System Design at GM

Functional Requirements Specification and System Design at General Motors



DfMA - Byrne Group Case Study

Design for Manufacture & Assembly- Byrne Group Case Study, Heathrow Terminal ...



Change Revision Control & PFMEA

Webinar PowerPoint presentation Greg of IPI solutions



Construction Quality Control with RFID

Building the Future for Construction Quality Control with Radio Frequency ID



Bill of Materials

Bill of Materials are used for working out the cost of a complex assembly



Waste: A Contractor's View

Lend Lease's journey in waste reduction in their construction projects



Waste: The Waste Hierarchy

It can be applied to any construction project in order to reduce of waste



Water: An Introduction

Why it is important for the construction industry



Water: A Contractor's View

Richard Hirst, Sustainability Manager at Skanska, explains how the supply ...



Water: The Water Hierarchy

Richard Hirst, Sustainability Manager at Skanska, explains how the supply ...



Skanska's Journey to Deep Green

Sustainable Construction: Skanska's Journey to reach their sustainability ...

[See more](#)[See more](#)[See more](#)[See more](#)[See more](#)[See more](#)

School activity 2019

People



3,036

active organisations

41% ↑



5,723

active users

41% ↑



508

bronze, silver, gold
level members

29% ↑



87

Partners

17 ↑

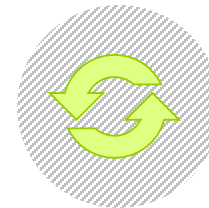
Assess



1,694

Skills
assessments

28% ↑

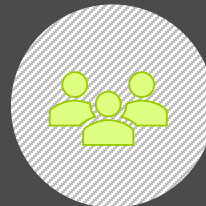


721

re-assessments

53% ↑

Learn



20,000

hours
face-to-face training



7,000

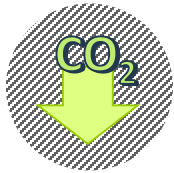
downloads of
e-learning



120,000

resources accessed
since 2012

Sustainability impact 2019



reduced carbon
emissions

34%

58%

agree the School
helped achieve this



reduced
waste

41%

65%

agree the School
helped achieve this

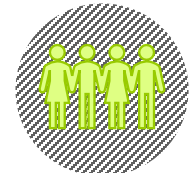


increased modern slavery
understanding

71%

86%

agree the School
helped achieve this



increased understanding
of FIR

64%

87%

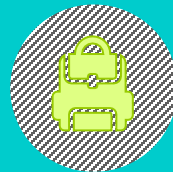
agree the School
helped achieve this



45%
increased community
engagement



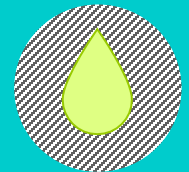
50%
increased understanding of
responsible sourcing



36%
increased apprentice
numbers



20%
improved air quality



16%
reduced water
consumption

72% agree the School
helped achieve this

77% agree the School
helped achieve this

42% agree the School
helped achieve this

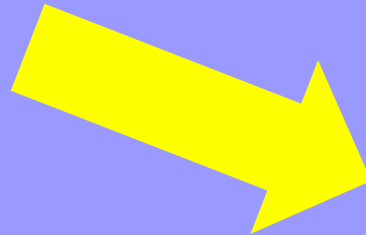
69% agree the School
helped achieve this

53% agree the School
helped achieve this

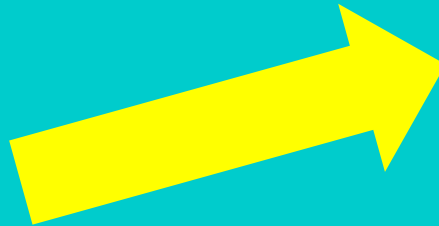
The world class collaboration to enable a more sustainable built environment



How can the School help you?



What is driving the School and the partners?



Market drivers



Client demands will only increase

Response to climate change

Public Health

Deliver local benefits

Leave a legacy

Legislation & Regulations & Improvements

Operatives training and compliance

Enhanced safety requirements

Reduced or zero emissions

Supply Chain measurables

Efficiency improvements

Telemetry, digital enhancements and monitoring





SUSTAINABILITY SUMMIT
