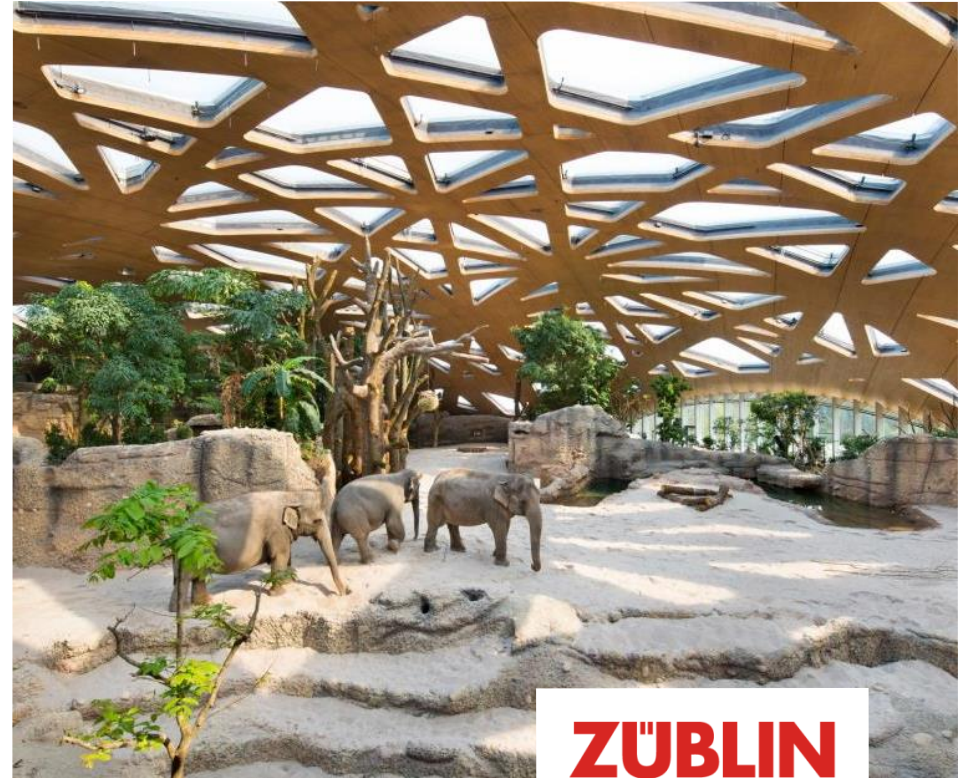




HOUSING CRISES SUSTAINABLE SOLUTIONS IN ENGINEERED TIMBER

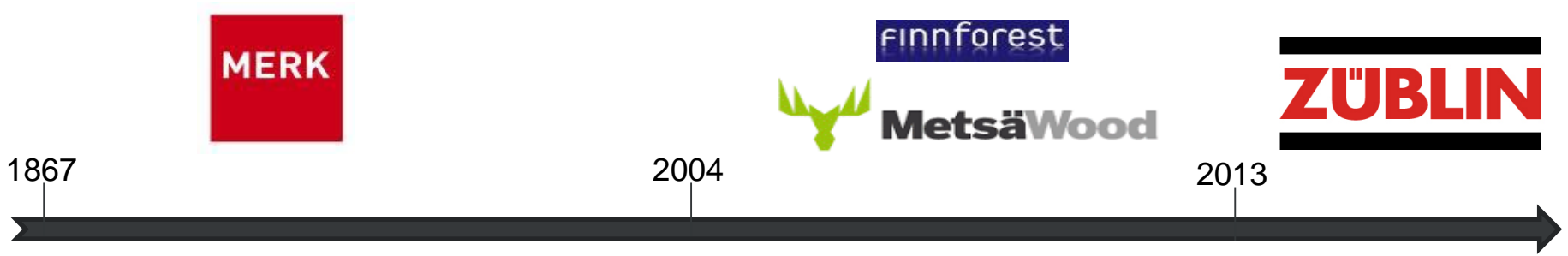
ZÜBLIN TIMBER
DIPL.ING.(FH) DANIEL KREISSIG

LONDON BUILD, 28 NOVEMBER 2019

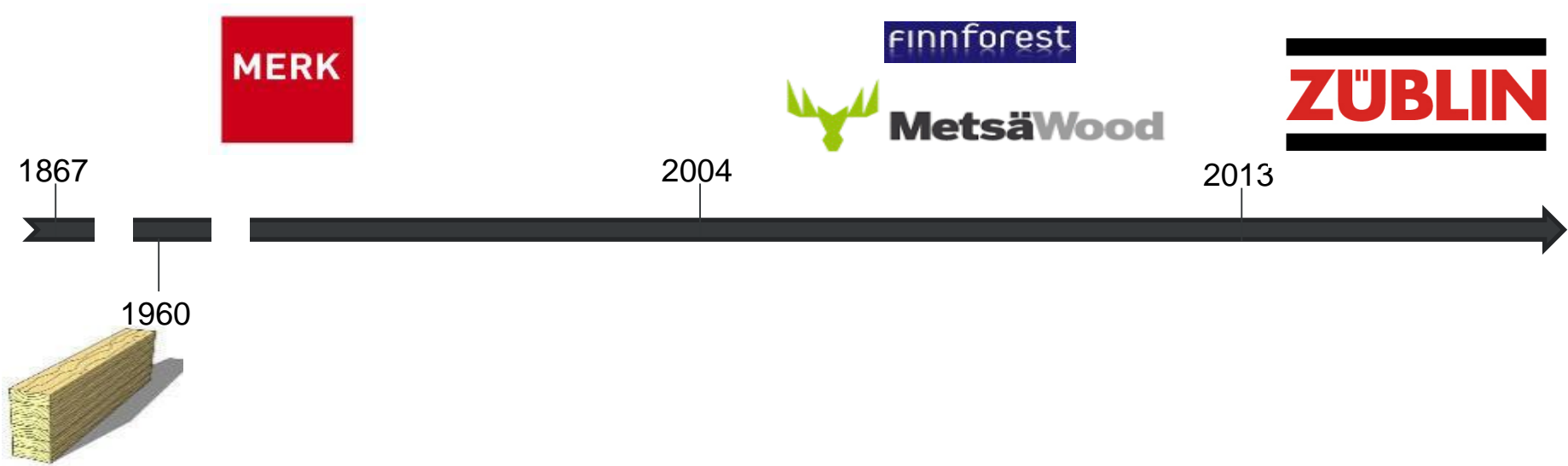


ZÜBLIN
TEAMS WORK.

ZÜBLIN TIMBER, HISTORY



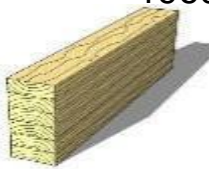
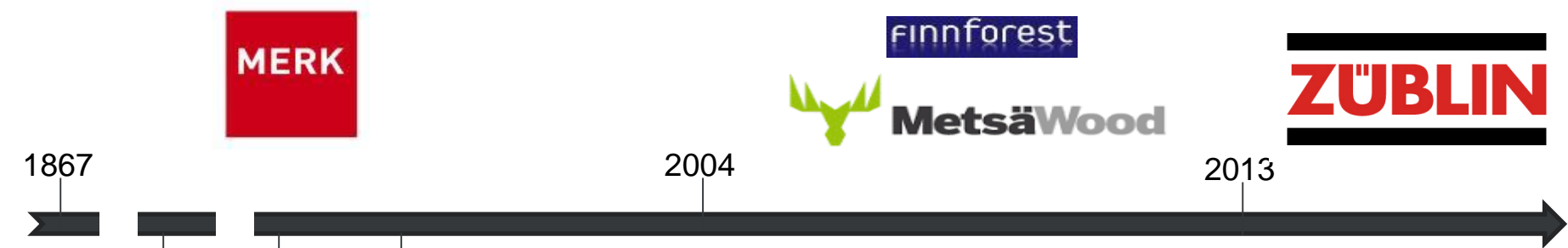
ZÜBLIN TIMBER, HISTORY



ZÜBLIN TIMBER, HISTORY



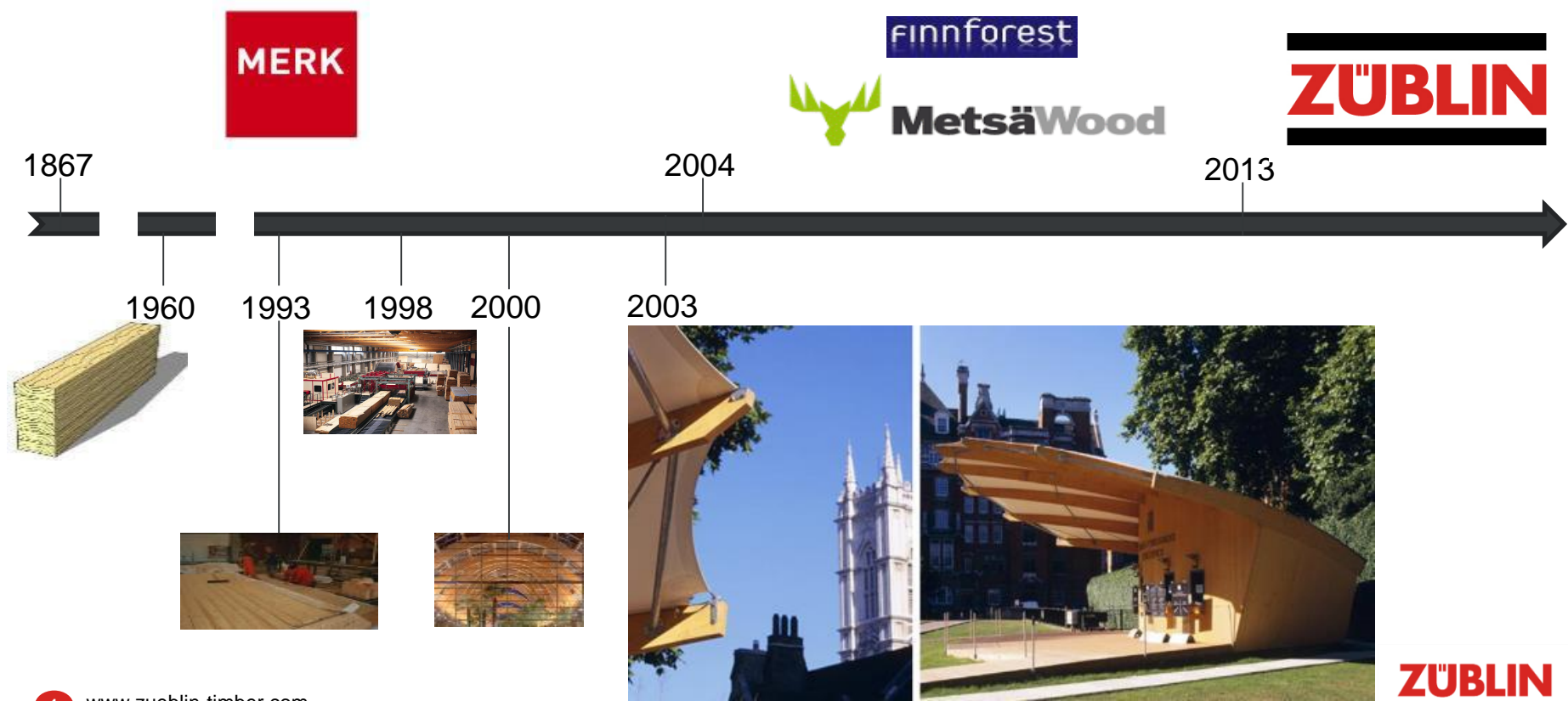
ZÜBLIN TIMBER, HISTORY



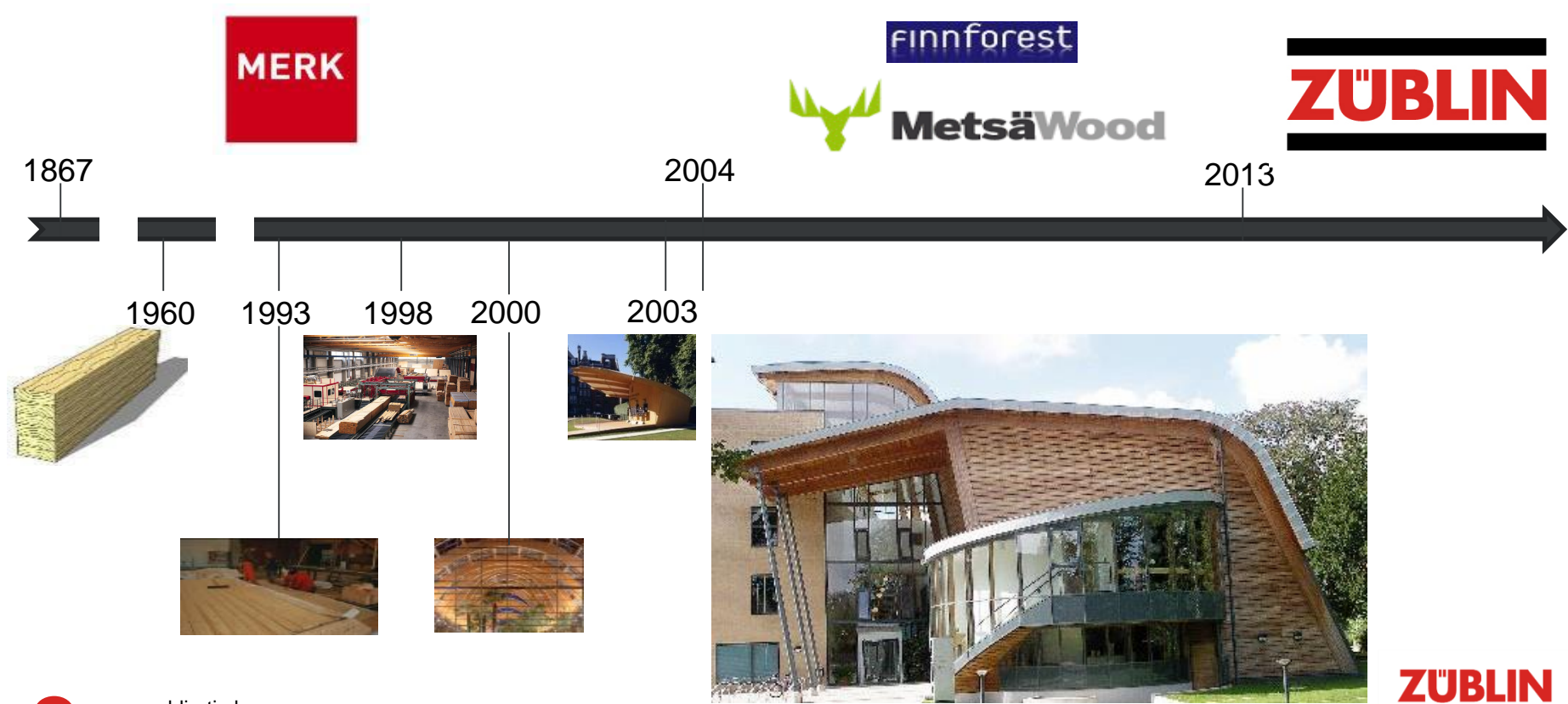
ZÜBLIN TIMBER, HISTORY



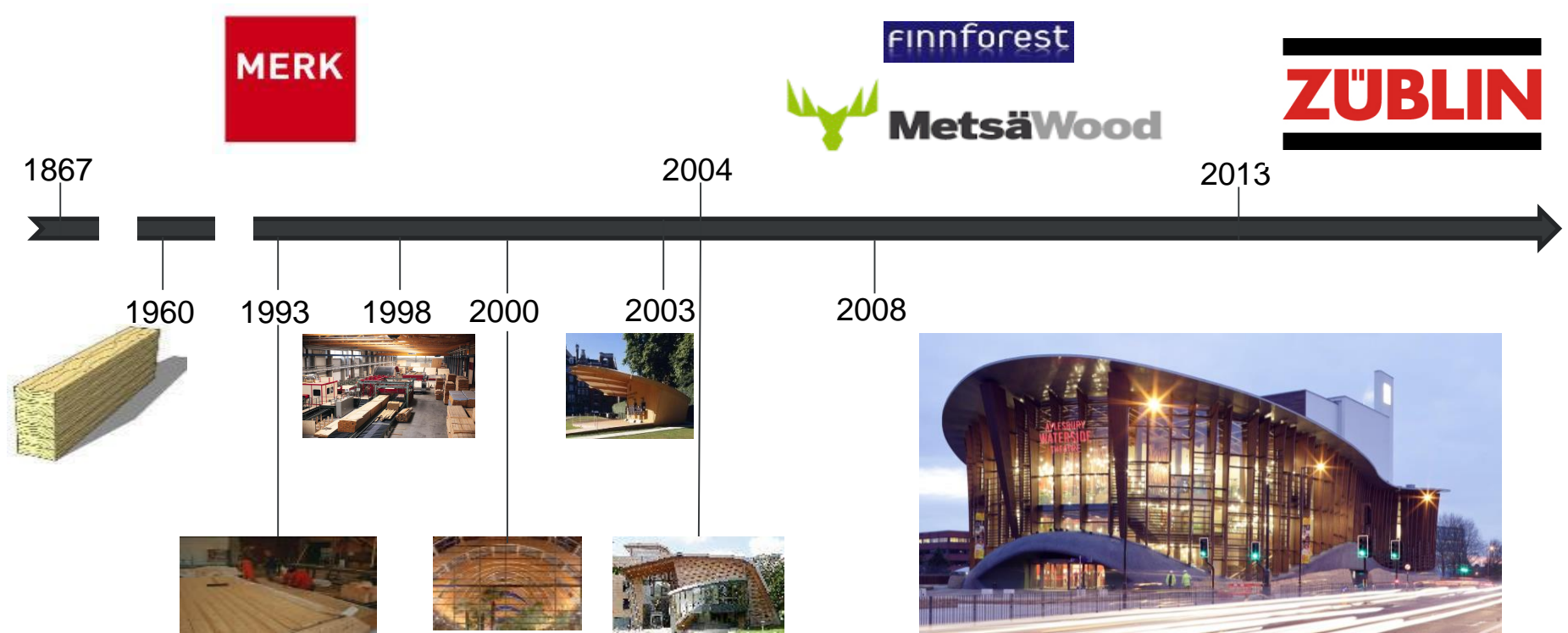
ZÜBLIN TIMBER, HISTORY



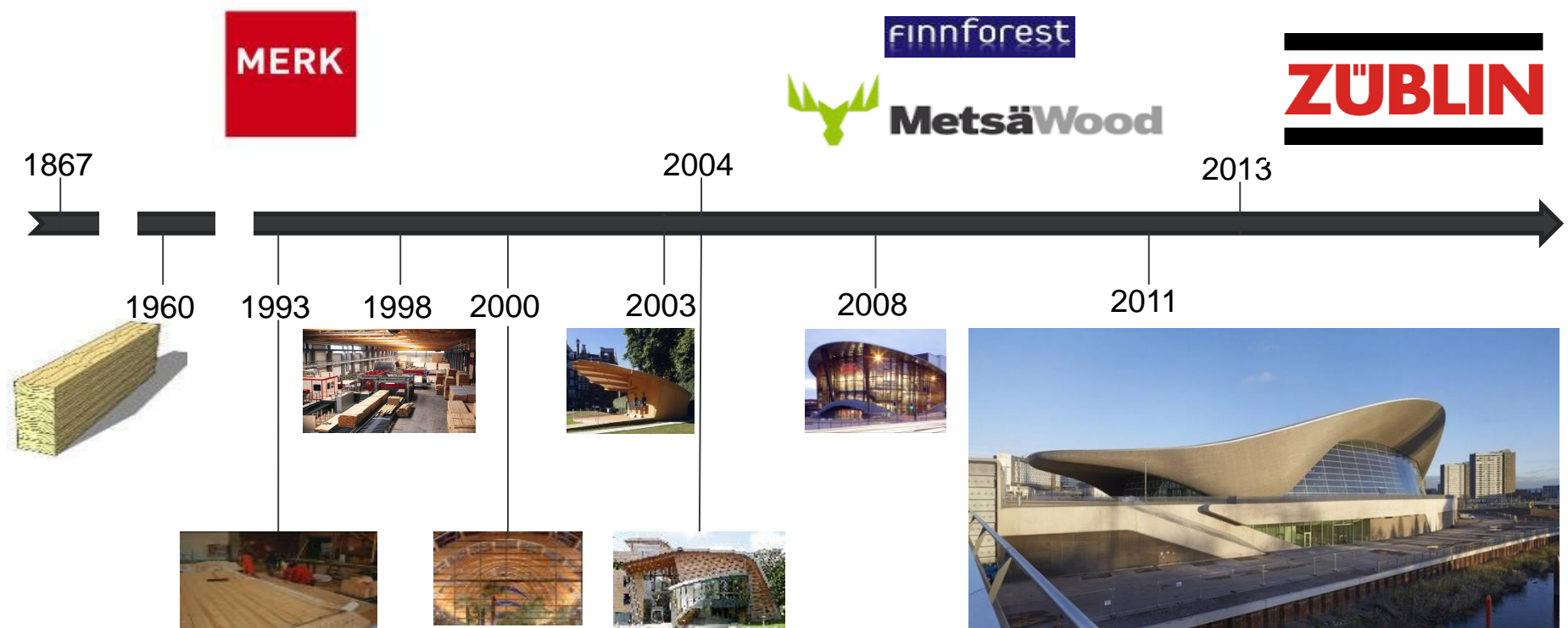
ZÜBLIN TIMBER, HISTORY



ZÜBLIN TIMBER, HISTORY



ZÜBLIN TIMBER, HISTORY



2

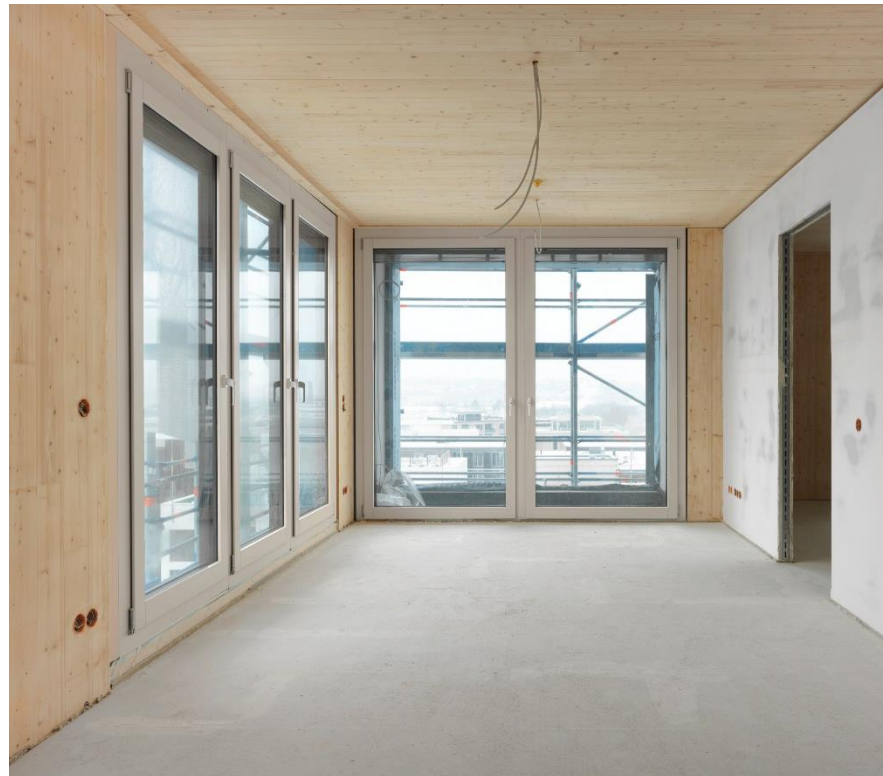
SUSTAINABLE SOLUTIONS IN ENGINEERED TIMBER

ZÜBLIN
TEAMS WORK.

TREET, BERGEN / NORWAY



SKAIO (J1), HEILBRONN / GERMANY



3X GRÜN, BERLIN / GERMANY



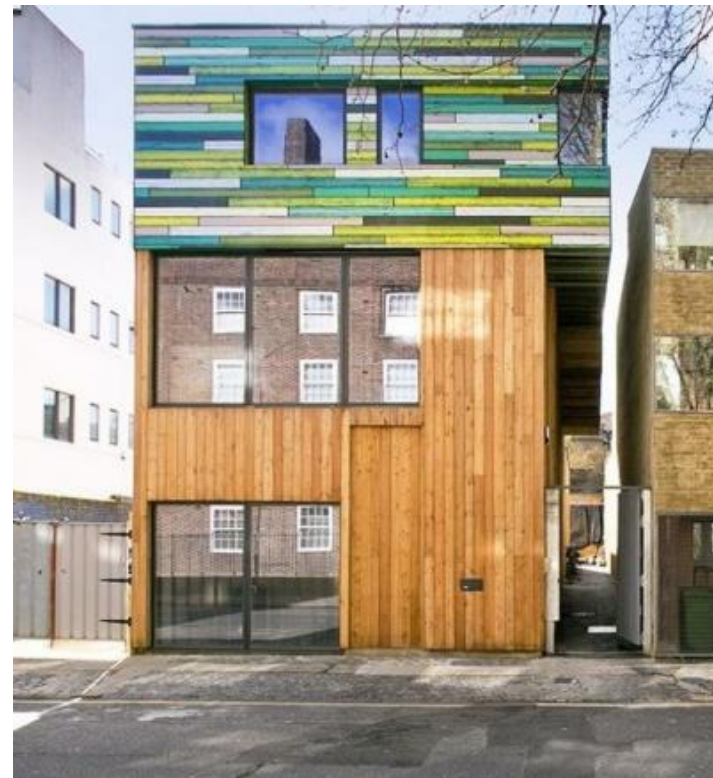
3X GRÜN, BERLIN / GERMANY



MÜGGELSTRASSE, BERLIN / GERMANY



WOOD BLOCK HOUSE, LONDON / UK



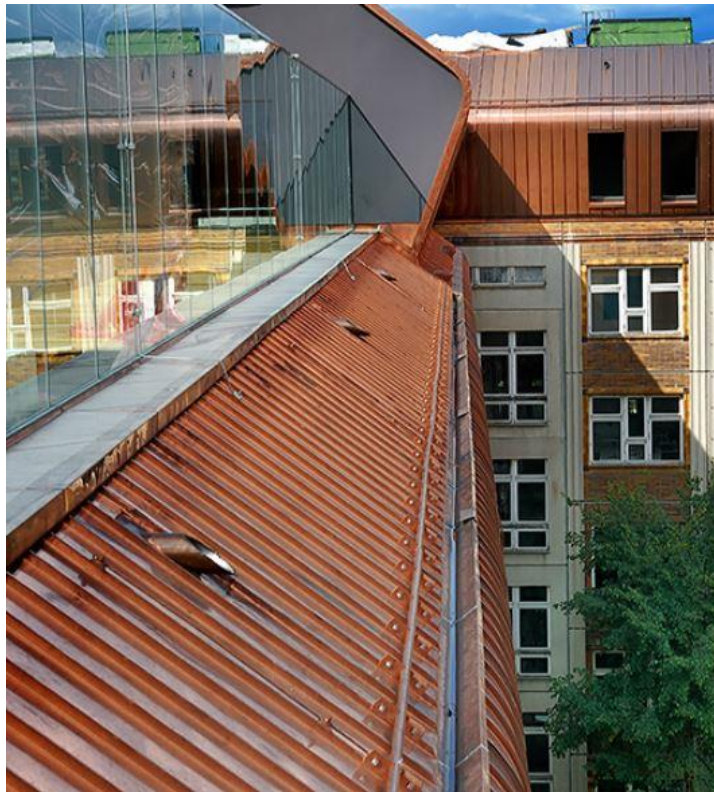
RUE TLEMCEN, PARIS / FRANCE



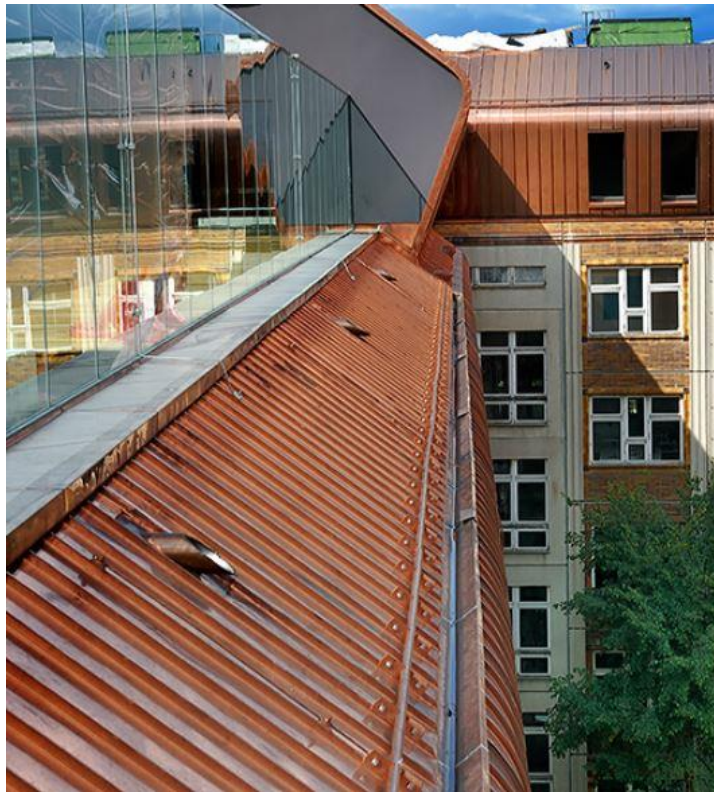
MEDICAL MUSEUM, INGOLSTADT / GERMANY



METROPOLITAN SCHOOL, BERLIN / GERMANY



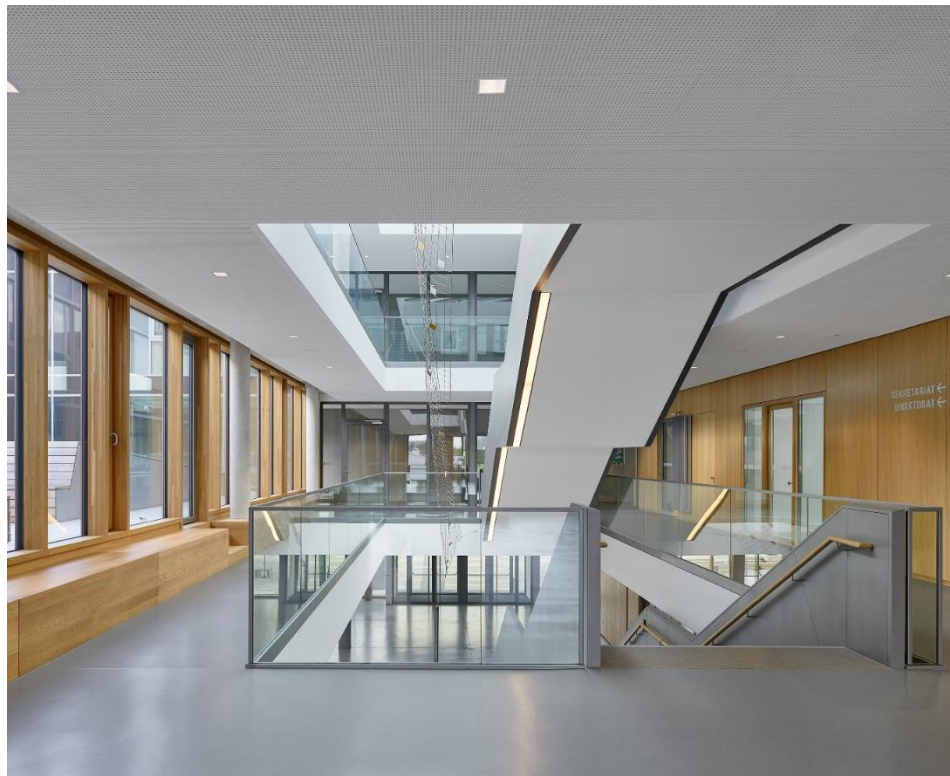
METROPOLITAN SCHOOL, BERLIN / GERMANY



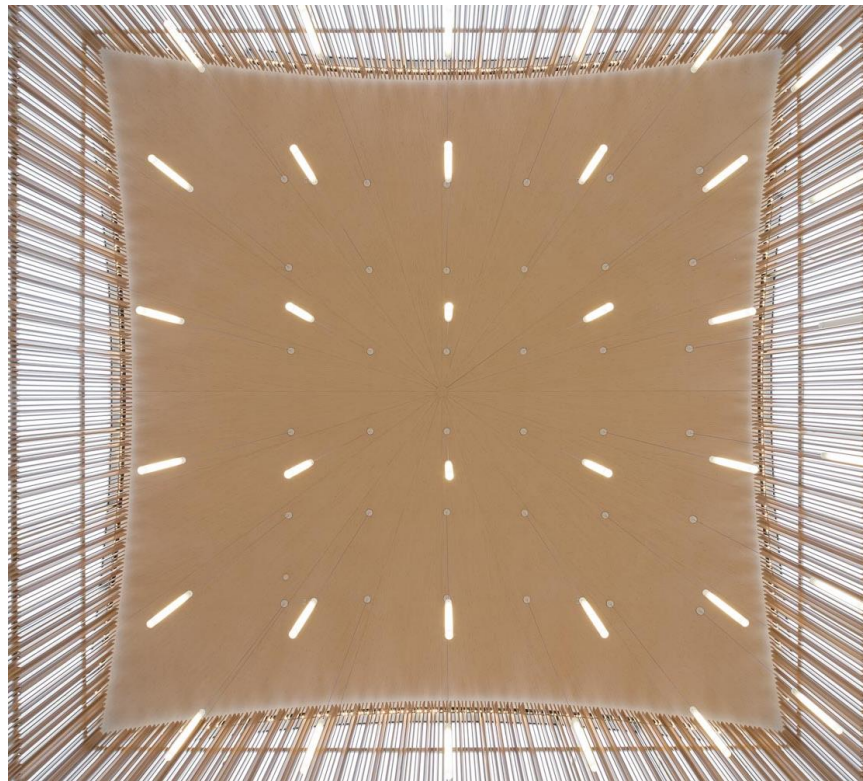
GYMNASIUM NORTH, MUNICH / GERMANY



GYMNASIUM NORTH, MUNICH / GERMANY



SYNAGOGUE, REGENSBURG / GERMANY



SYNAGOGUE, REGENSBURG / GERMANY



SUMMARIZE OF BENEFITS



Leightweight of Construction

SUMMARIZE OF BENEFITS



Leightweight of Construction

Space plus (due to thin section size of walls)

SUMMARIZE OF BENEFITS



Leightweight of Construction

Space plus (due to thin section size of walls)

Pre-fabrication and Speed on Site

SUMMARIZE OF BENEFITS



Leightweight of Construction

Space plus (due to thin section size of walls)

Pre-fabrication and Speed on Site

Building in Wood is:

Natural, Sustainable, Non-Toxic, Calming

3

CASE STUDY

www.zueblin-timber.com / Image by Edmund Summer

ZÜBLIN
TEAMS WORK.



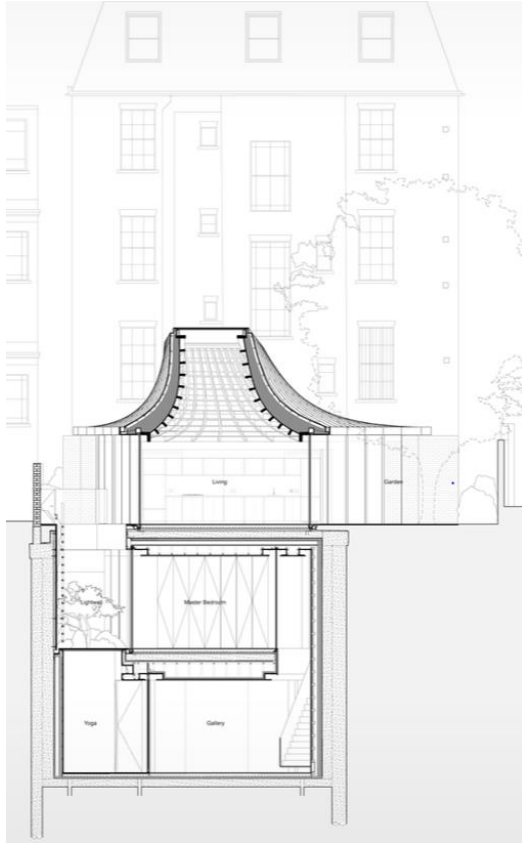
ZÜBLIN
TEAMS WORK.

PROJECT TEAM

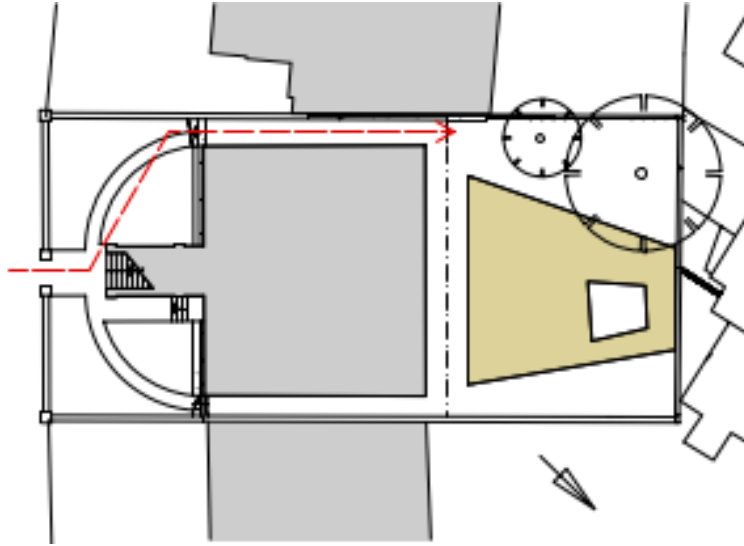


- Client: Private
- Architect: Gianni Botsford Architects
- Structural Engineer: Built Engineers
- Main Contractor: NewWave London
- Timber Subcontractor: ZÜBLIN Timber

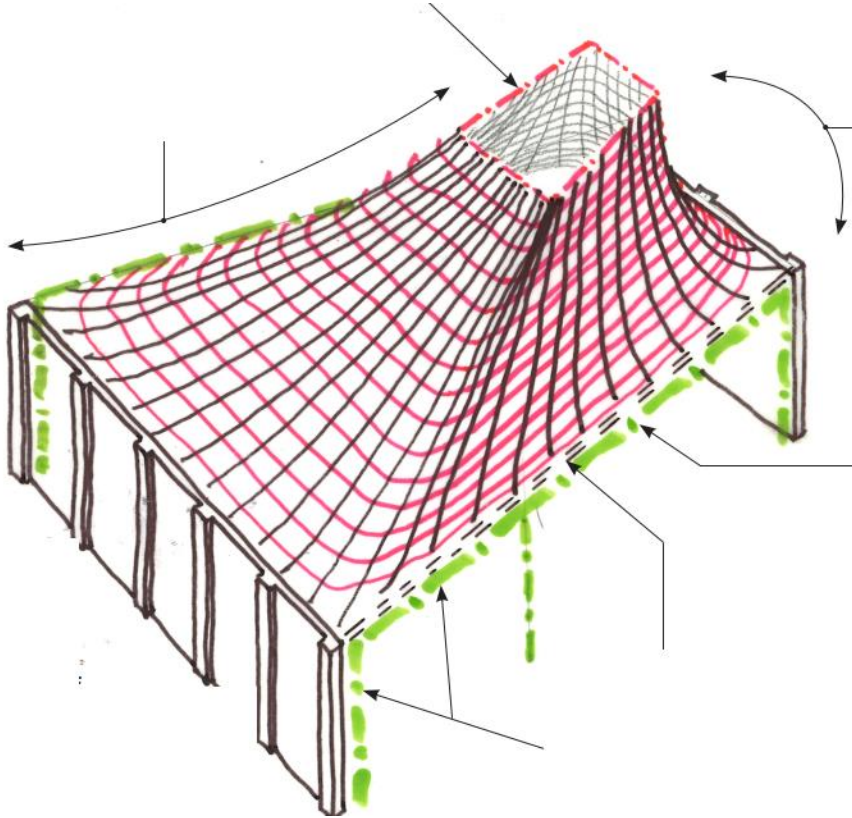
INTRODUCTION



- Highly unusual dwelling
- demolition of a 1960s bungalow and its replacement with a largely subterranean house



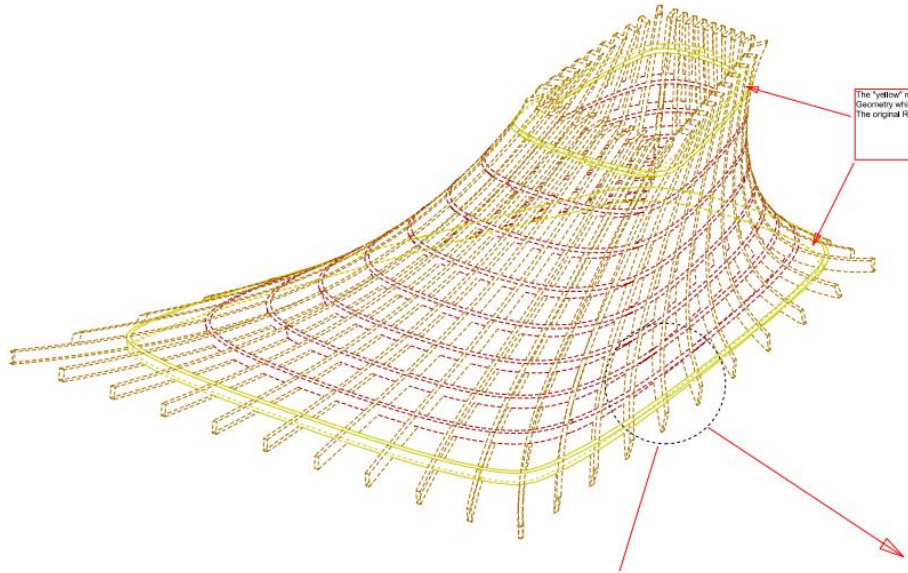
FROM DESIGN TO PRODUCTION



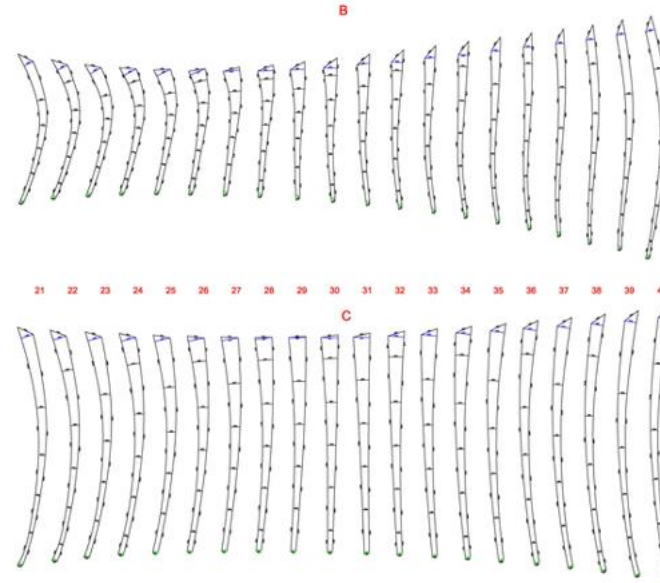
Scope of works:

- Design, Manufacturing and Installation of the Steel and Timber Roof structure
- including the timber grid shell
- plus plywood sheeting
- plus secondary roof structure incl. insulation

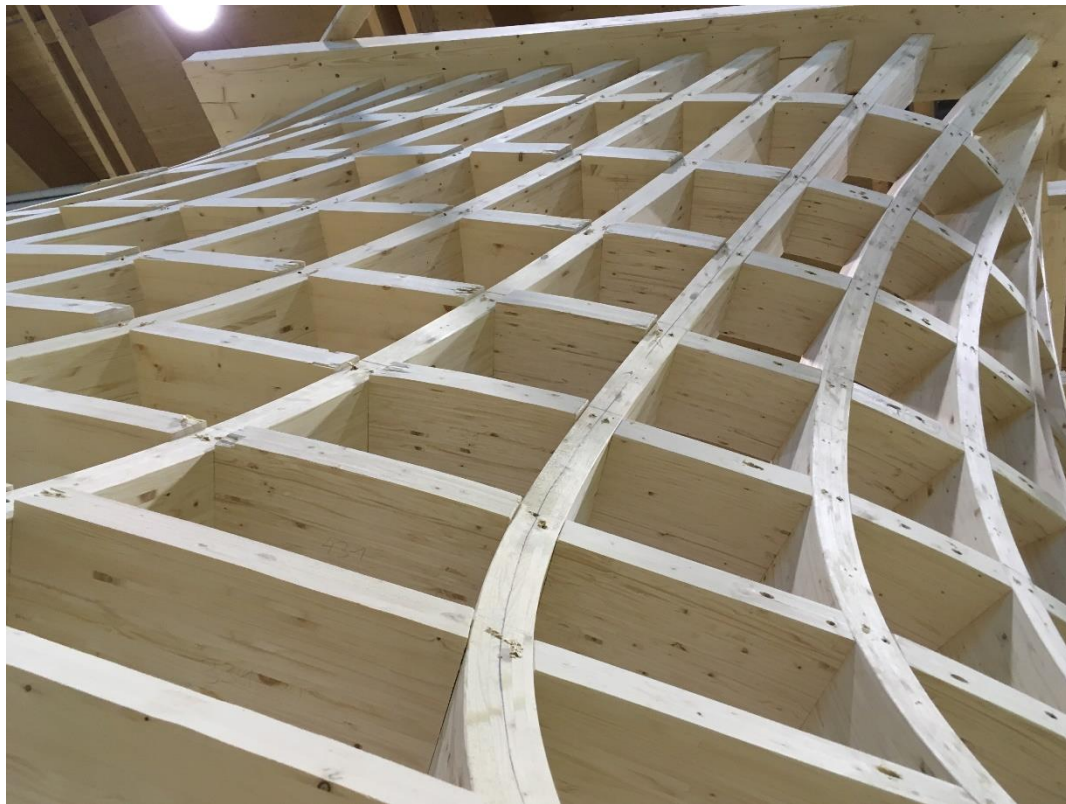
FROM DESIGN TO PRODUCTION



- Architectural Model: RHINO
- Timber Model: CADWORK
- More than 400 single pieces for the timber grid shell plus plywood sheeting plus secondary roof structure including insulation



FROM DESIGN TO PRODUCTION



FROM DESIGN TO PRODUCTION



FROM DESIGN TO PRODUCTION



FROM DESIGN TO PRODUCTION





ZÜBLIN
TEAMS WORK.



ZÜBLIN
TEAMS WORK.



ZÜBLIN
TEAMS WORK.