

TM

BISAM

FACADE

Building Envelope Systems



ARCHITECTURAL DESIGN MANUAL
BF250 Fire Resistive Aluminum Framing System



Index

About Us	2-5
Technical Data	6
Maximum Panel and Glass Dimesions	7
Typical Details	8-9





WHO WE ARE

Bisam Facade is your neighborly solution partner for all your needs whether your project entails windows, doors, storefronts, fire rated, metal panel works or even custom elements we are your aluminum solution destination! Bisam Facade with its more than 20 years of experience, local sales & after sales service teams and supplier partners that are globally known crafts at a high level of expertise in aluminum enveloping field. As a trusted member of the aluminum community, we innately understand your needs and apply the full force of our infrastructure to achieve your goals.



SWIFT & EFFECTIVE

You occupy a world that requires swift action to get the job done. Working with Bisam Facade affords you the chance to be on the same team as the leader in fast, sustainable solutions to prevent any loss in time and resources.



ULTIMATE PRODUCT & SERVICE RANGE

If you are fed up knocking on countless doors simply to meet your project requirements, Bisam Facade is the right place for you. From providing easy access in the ultimate product range, to offering in-house engineering design teams, Bisam Facade covers all your facade and aluminum enveloping needs under one umbrella.



SUPERIOR LOGISTICS & PACKAGING

On time and swift delivery of materials just off the production line is a crucial element in your project. We precisely barcode all materials and packages for easy recognition in the field, and our massive logistics network offers you multiple choices of delivery including warehouse pick-up.



ENVIRONMENTAL STATEMENT

Fully aware that we have a special responsibility to respect and protect the delicate balance of nature. We at Bisam Facade acknowledge our obligation to maintain the ecology of this planet. Accordingly, we are committed to the prudent, sustainable use of the earth's resources and the protection of the natural environment while we strive to fulfill our mission of contributing to enhanced prosperity for all. For this purpose, we address environmental challenges through our business activities and develop our environmental initiatives in collaborating with our suppliers.



ENVIRONMENTAL ACTION GUIDELINE

- We supply the energy used in our factory from photovoltaic solar panels and we contribute to other industrialists by giving the excess to the power grid.
- We obtain our raw materials from recycled aluminum.
- By collecting and storing rain water, we ensure efficient use of water and protect water resources.



Annual Production Capacity



Aluminium Unitized Panel, Curtain Wall,
Window and Door
2,000,000 Sqft

Architectural Railing
18,000 Sqft





Production & Fabrication Site
Istanbul, Turkey
150,000 Sqft covered area



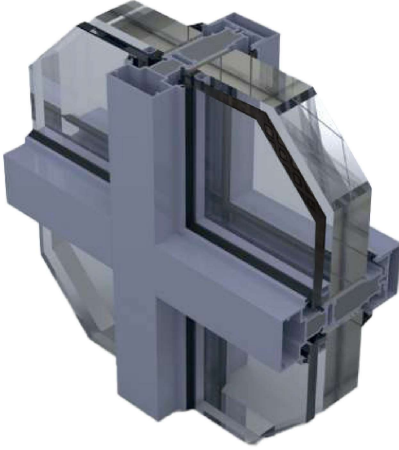
Architectural Louver
150,000 Sqft

Anchors, Steel, etc.
1,300,000 Lb

Aluminium Cladding
1,500,000 Sqft



TECHNICAL DATA



FEATURES

- Standard 2-1/2" sightline on verticals and horizontals.
- 6-7/8" frame depth.
- 1/16" Wall thickness.
- Thermally broken aluminum profiles.
- Fire resistive and heat barrier system.
- Applicable to use at exterior applications.
- Can be glazed from inside to eliminate intervention from outside.
- Applicable to use at lot line zones.
- Compliant to NYC Building code.
- High insulated profile system for superior energy efficiency.
- Sound insulated profile system for superior OITC ratings.
- All standard powder coating colors with qualicoat certification.
- Various standard anodized colors with qualanod certification.
- Air, water and dust sealing gaskets made of EPDM.
- Tested with "AGC PYROBEL 120 min. FR Glass with low-e" insulated glass.

	Fire Resistive Rating
	120 min Fire Resistive
	Heat Barrier
	Hose Stream
	Tested according to UL 263
	Green

PERFORMANCE VALUES

Fire and hose stream	120 min fire resistance
Air infiltration	<0.1 cfm/ft ² @ 6.24 psf
Water penetration	15 psf
Wind resistance design	80 psf
Wind resistance overload	120 psf

LISTINGS AND TEST STANDARTS

BF250-2H system is classified & labeled by INTERTEK laboratories according to UL 263 / ASTM E119 fire resistance test standard.

Air infiltration	ASTM E283
Water penetration	ASTM E331
Structural - Uniform Wind Load	ASTM E330
Thermal transmittance U-Factor	NFRC100, 102, 500; AAMA 1503
Solar Heat Gain Cefficient (SHGC)	NFRC 200
Visible Sound Transmission (STC, OITC)	ASTM E90

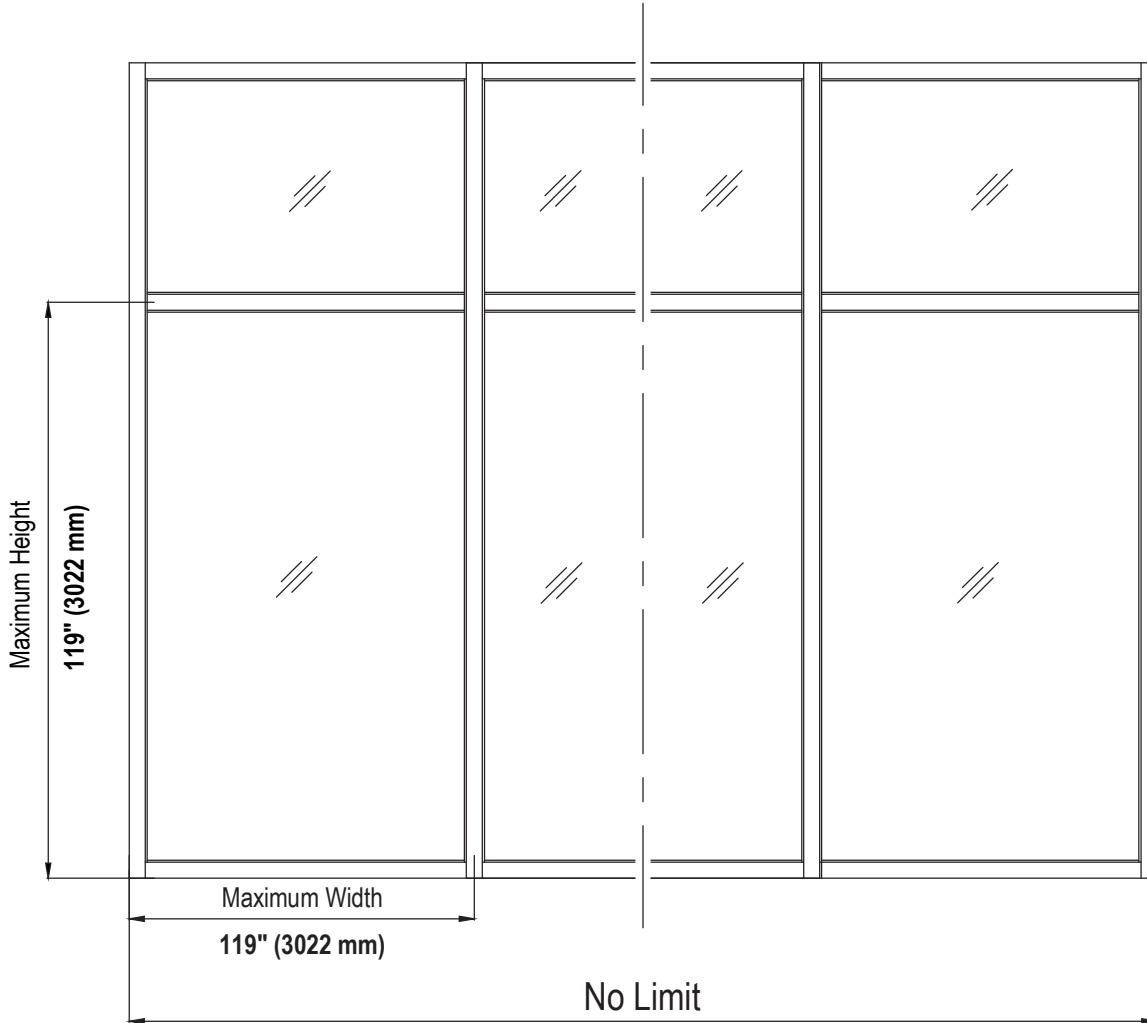
SPECIFICATIONS

Complete 3-part CSI format specifications are available upon request.

	Residential Building
	Commercial Building
	Hotel
	School
	Hospital

MAXIMUM PANEL AND GLASS DIMENSIONS

The maximum applicable glass sizes are limited to the current fire glass technology and the maximum glass sizes tested. It can be applied up to 33.9 sqft (3.15 m²) in a single panel in the BF250-2H system.

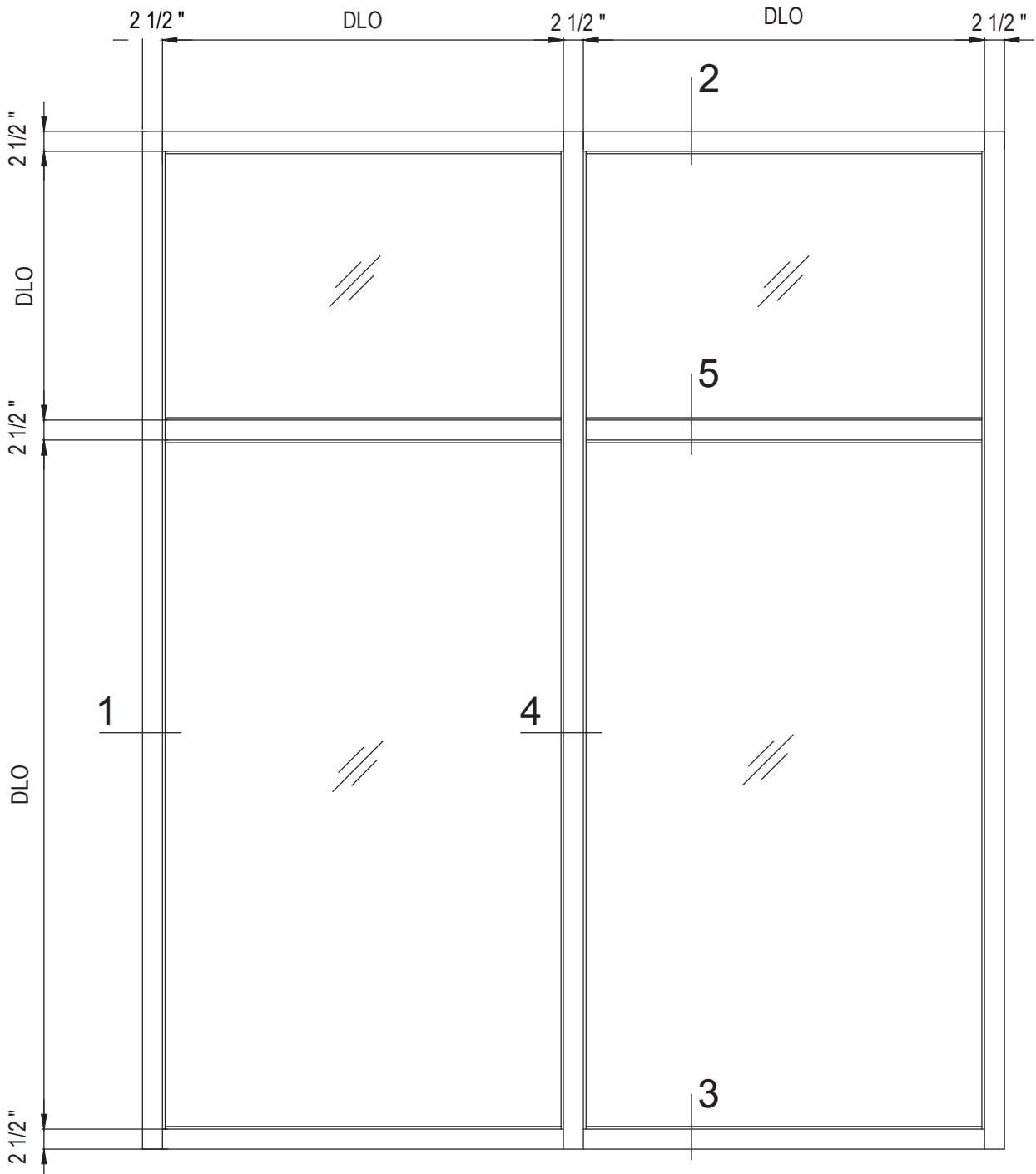


TECHNICAL DETAILS (FIRE RESISTANCE PROPERTIES)

Frame Fire rating /Testing Standart	120 Minutes / UL 263
Glass/Fire Rating	AGC Pyrobel 54 W /LOW-E /120 min Fire Resistive IGU 3 1/8" (80mm)
Building Code Marking	W-120
Maximum Glass Height	115 7/16" (2932 mm)
Maximum Glass Width	115 7/16" (2932 mm)
Maximum Glazing Area Width	33.91 sqft (3.15 m ²)
Glass Thickness	3 1/8" (80mm)
Glass Weight	31 lbs/sqft (153kg/m ²)

TYPICAL DETAILS

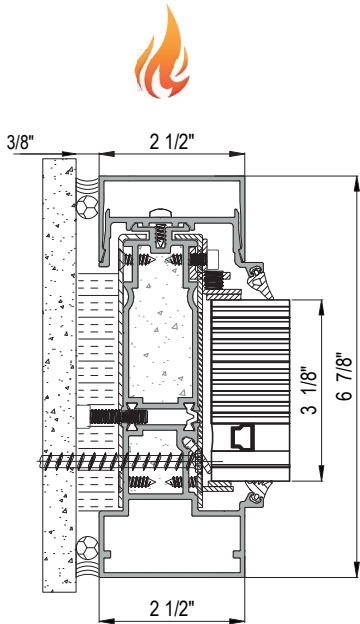
120 MINUTES FIRE RESISTIVE WALL/WINDOW



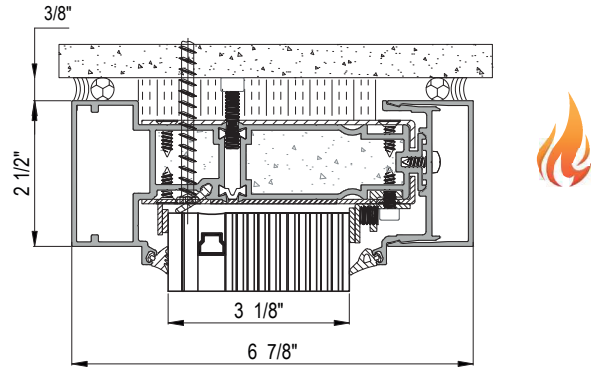
TYPICAL ELEVATION

TYPICAL DETAILS

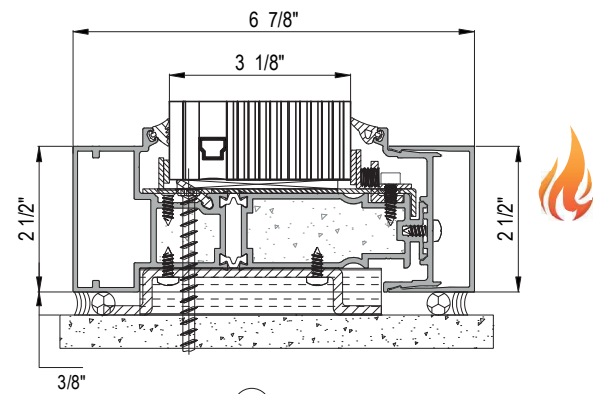
120 MINUTES FIRE RESISTIVE WALL/WINDOW



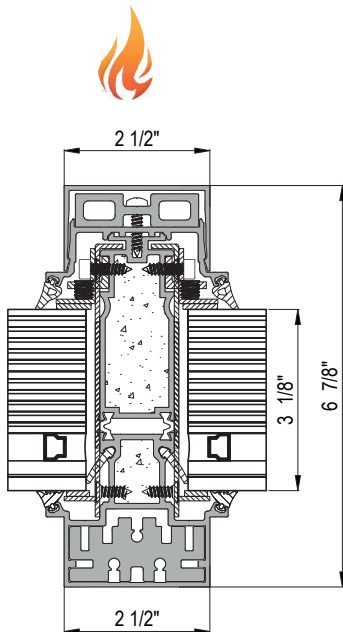
①
JAMB DETAIL



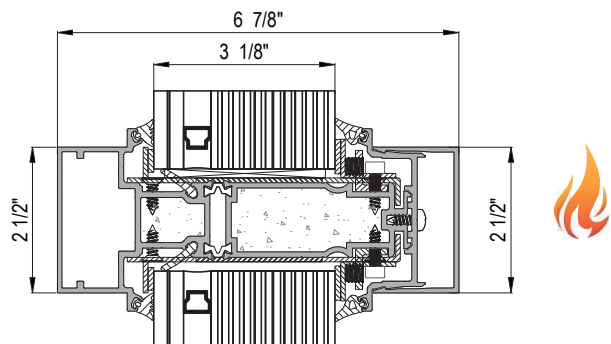
②
HEAD DETAIL



③
SILL DETAIL



④
VERTICAL MULLION DETAIL



⑤
HORIZONTAL MULLION DETAIL



Address: 67 35th Street, Suite # C535 Brooklyn, NY 11232

Phone: +1(212) 461-1725 **E-mail:** info@bisamfacade.com

bisamfacade.com

 [bisam.facade](https://www.instagram.com/bisam.facade)

 [Bisam Facade](https://www.linkedin.com/company/bisam-facade)