

PROTECTION
FOR THE UNEXPECTED



Flood Barriers | Floodproof Windows | Flood Vents



Table of Contents

WHAT ARE YOU LOOKING FOR?

SERVICES & RESOURCES

Flood Design Team	4
Project Financing	6
Product Installation	7
Professional Education	8
Flood Insurance Review	9

FLOOD VENTS

Flood Vents	10
Multi-Frames	12
Accessories	13

FLOOD BARRIER PANELS

Custom Door & Window Flood Barrier	14
Standard Door Flood Barrier	16

FLOOD LOGS SYSTEMS

Flood Logs	18
Flood Plank System	20

PASSIVE BARRIERS

Horizontal Passive Flood Barrier	22
Vertical Passive Flood Barrier	24

FLOODPROOF WINDOW & WALL SYSTEMS

Fenex Floodproof Window Systems	26
Fenex Glass Flood Wall Systems	28

POINT-OF-USE BARRIERS

Side-Deployed	30
Bottom-Deployed	30

PERIMETER BARRIERS

Standard Perimeter Flood Barrier	32
Custom Perimeter Flood Barrier	34
Collapsible Perimeter Flood Barrier	36
Flexible Perimeter Flood Barrier	38

SAND-FILLED FLOOD FIGHTING SYSTEMS

Long-Run System	40
Short-Run System	42

RESIDENTIAL FLOOD BARRIERS

Dam Easy Door Barrier	44
-----------------------	----

FLOOD PUMPS

Dri-Prime Pumps	46
Submersible Pumps	47
Wet-Prime Pumps	47



About Floodproofing.com

PROTECTION FOR THE UNEXPECTED

We provide flood protection products, education, & support that follow all of the latest regulations.



We sell wet & dry solutions designed to meet the needs of residential & commercial projects.



From pre-bid planning & pricing, to expert product selection & supplying authorized installers, we ensure jobs are done right.



We help you navigate various floodplain codes & regulations to ensure design compliance.

1 (800) 507 0865 | info@floodproofing.com

The Flood Design Team

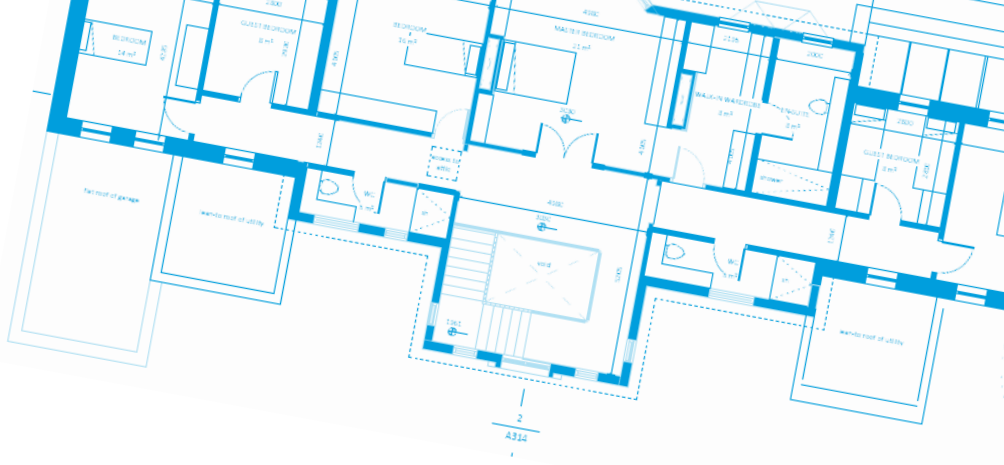
STREAMLINING THE PROJECT PROCESS

Our in-house team of Certified Floodplain Managers and Engineers have decades of experience and can help you navigate the complex codes and standards associated with building in a floodplain.

We'll analyze your unique project, taking the time to review your budget and find the perfect solution from our portfolio of floodproofing products. Our design analysis contains custom 3-part specifications, product recommendations, take-offs and schedules giving you everything you need to know to move forward with your project. We help you improve timelines by alleviating the complicated issues that arise, avoiding the bottleneck caused by adding flood protection to your design later in the game. This entire service is provided complimentary so you can focus on other aspects of your design, knowing a knowledgeable, experienced team handled your floodproofing needs from start to finish.



FLOOD DESIGN TEAM



WHAT'S INCLUDED IN YOUR Design Analysis



The Best Solutions
For Your Project



Federal, State &
Local Code Help



Custom 3-Part
Specifications



Transparent Timelines
& Deliverables

EASILY COMPARE

Features, Storage & Deployment

Send us your project plans, & we'll provide a free, in-depth analysis with guidance on the best floodproofing solutions for your commercial or residential project.



SAVE TIME

So you can focus
on other tasks

STAY ON BUDGET

No surprises or budget
concerns

PEACE OF MIND

Knowing the job will
meet building codes

SMOOTH PROCESS

No design hold ups
or bottlenecks

Send Your Plans

floodproofing.com/plans or plans@floodproofing.com



Fast, Flexible Financing

MANAGABLE PROJECT PAYMENT PLANS

We make flood protection more accessible by offering simple payment plans for your flood protection projects.

We've partnered with Ascentium Capital & MoreHouse Finance, making flood protection more accessible. Our new financing options make funding commercial & residential flood mitigation products easier with a convenient process.



Fill Out The Application



Receive A Quick Decision



Review & Sign Documents

COMMERCIAL

- Financing up to \$2 million
- Quick application for loans up to \$250,000
- \$0 down & low introductory payment options
- Fast decisions & broad terms

RESIDENTIAL

- No prepayment penalty
- Unsecured loans
- \$1,000 - \$65,000
- FDIC Backed

Request A Quote

financing@floodproofing.com

Product Installation

A TURNKEY SOLUTION FOR YOUR PROJECT

We'll provide an experienced team of experts who can handle the installation of your flood protection products.

Our partners are experienced & trained on all wet and dry floodproofing products in our catalog. They understand the complex codes & standards associated with properly installing flood mitigation solutions and will ensure your flood protection system works as intended..

In-depth knowledge of passive systems, flood barriers & flood windows



Save Time & Costs
Focus on other aspects



Guidance of
codes & standards



Reduced Risk
with proper installations

WORK WITH US install@floodproofing.com or floodproofing.com/install



Professional Education

LUNCH & LEARNS OR WEBINARS

We have multiple floodplain design courses that can be taken online or given in person.

We've spent many years studying the science of flood mitigation and the effects of flood waters on a poorly protected structures. We instruct and educate Architects, Builders, Certified Floodplain Managers, Code Officials, Engineers, Insurance Agents, Realtors, and Surveyors.

SCHEDULE A LUNCH & LEARN OR WEBINAR ceu@floodproofing.com

Topics We Cover

- Floods and potential hazards to buildings
- FEMA, NFIP, ASCE, ICC, and Building Codes
- Differences between wet & dry floodproofing
- Differences in engineered & non-engineered openings
- Active vs. passive solutions & impact of ownership
- The role of building compliance in flood insurance rates

Complementary Flood Insurance Review

RECEIVE THE LOWEST POSSIBLE PREMIUM

Ensure you're taking advantage of the possible credits and discounts available for your structure.

Our floodproofing assessment helps ensure your structure is designed to be properly protected. Make sure you also reap the benefits with our complementary flood insurance review which may lead to a lower premium.



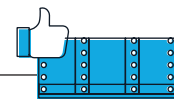
Proper Venting Discount

Flood risk can be reduced by installing flood vents that prevent foundation damage which can lead to flood insurance discounts.



Correct Rating

There are many nuances to flood insurance. We can make sure projects or properties are rated correctly & receiving the lowest premium possible.



Dry Floodproofing Credit

It can be difficult to get approved for dry floodproofing credit. Our specialists can help ensure maximum flood insurance savings with the proper credits.

FLOOD INSURANCE QUESTIONS? insurance@floodproofing.com or 1 (800) 507 0865

Engineered Flood Vents

SMART VENT PRODUCTS, INC.



Flood vents protect enclosures by allowing automatic bi-directional water flow that equalizes hydrostatic pressure.



Insulated 1540-520 in Stainless Steel



Dual-Function Stacker 1540-511 in Powder Coat White



Insulated Wood Wall 1540-570 in Stainless Steel

Applications

Crawlspaces | Full Height Enclosures | Parking Garages | Storage Facilities | Foyers

FEATURES



Stainless Steel
316L Marine Grade

15

Guaranteed
15-Year Extended Warranty



USA
American Made



Secure
Internal Floats
Keep Door Latched



Support
In-House Engineering
& Design Assistance



Certified
Flood Protection

VENTILATION

Dual-Function

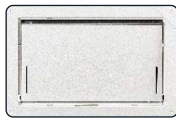
STEEL GRAY WHITE BLACK WHEAT CUSTOM



Standard Dual-Function

1540-510 & 1540-511

Automatic ventilation. A bi-metal coil opens & closes the louver as the temperature changes. Stacker models are ideal for large square footages with less openings.



Garage Door Model

1540-524 & 1540-574

Designed for garage doors or heavily trafficked entry doors. Available in insulated or dual-function models.

INSULATION

Insulated

STEEL GRAY WHITE BLACK WHEAT CUSTOM



Standard Insulated

1540-520 & 1540-521

Ideal for areas requiring flood venting protection but not natural air ventilation. Stacker models are ideal for large square footages with less openings.



Insulated Wood Wall

1540-570

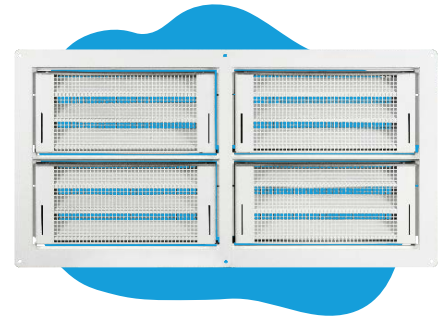
Designed to fit between studs spaced 16" on center. Pre-drilled slots in the four corners of the vent flange make for easy installation.

MODEL	FLOOD COVERAGE	AIR VENTILATION	DIMENSIONS	ROUGH OPENING
1540-510	200 sq ft	51 sq in	16"W x 8"H x 3"D	16 ¹ / ₄ " x 8 ¹ / ₄ "
1540-511	400 sq ft	102 sq in	16"W x 16"H x 3"D	16 ¹ / ₄ " x 16 ³ / ₈ "

MODEL	FLOOD COVERAGE	R-VALUE	DIMENSIONS	ROUGH OPENING
1540-520	200 sq ft	8.34	16"W x 8"H x 3"D	16 ¹ / ₄ " x 8 ¹ / ₄ "
1540-521	400 sq ft	8.34	16"W x 16"H x 3"D	16 ¹ / ₄ " x 16 ³ / ₈ "
1540-570	200 sq ft	8.34	14.5"W x 8.5"H x 3"D	14 ¹ / ₂ " x 8 ³ / ₄ "
1540-524	200 sq ft	8.34	16"W x 8"H x 3"D	16 ¹ / ₄ " x 8 ¹ / ₄ "
1540-574	200 sq ft	8.34	14.5"W x 8.5"H x 3"D	14 ¹ / ₂ " x 8 ³ / ₄ "

Smart Vent Multi-Frames

SMART VENT PRODUCTS, INC.



Customizable one-piece frame with fewer openings for commercial applications or large square footages.



6 x 2 Insulated #1540-150602 Custom Gray

1 Flood Door STEEL GRAY WHITE BLACK WHEAT CUSTOM

Dual Function 1540-0039 Insulated 1540-0239



Custom Configurations Up To A 6 x 3 Multi-frame

2 Frame

Standard Multi-frame

1/8 inch thick angle iron for an extremely sturdy, element-resistant design.

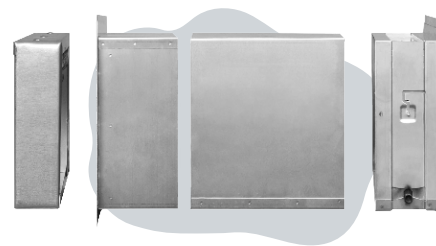
"E" Multi-frame

The same superior design using a lighter steel material to provide a more economical solution.

3 Configuration

MODEL	DESIGN	COVERAGE	"E"				
1540-150102	1W x 2H	400 sq ft	✓	1540-150401	4W x 1H	800 sq ft	x
1540-150103	1W x 3H	600 sq ft	✓	1540-150402	4W x 2H	1600 sq ft	x
1540-150201	2W x 1H	400 sq ft	✓	1540-150403	4W x 3H	2400 sq ft	x
1540-150202	2W x 2H	800 sq ft	✓	1540-150501	5W x 1H	1000 sq ft	x
1540-150203	2W x 3H	1200 sq ft	✓	1540-150502	5W x 2H	2000 sq ft	x
1540-150301	3W x 1H	600 sq ft	✓	1540-150503	5W x 3H	3000 sq ft	x
1540-150302	3W x 2H	1200 sq ft	✓	1540-150601	6W x 1H	1200 sq ft	x
1540-150303	3W x 3H	1800 sq ft	✓	1540-150602	6W x 2H	2400 sq ft	x
				1540-150603	6W x 3H	3600 sq ft	x

Smart Vent Accessories



SMART VENT PRODUCTS, INC.

Accessories & products that pair with Smart Vents to upgrade your energy efficiency, finish a look, meet codes or for installation.



Sealing Kit

Energy Saving



Finishes off interior spaces & lowers energy bills, effectively meeting 2018 Energy Codes.

SINGLE [1540-526](#)

STACKER [1540-526-2](#)



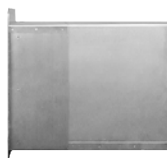
Hurribond™

2-in-1 Adhesive

A fast curing, multi-purpose, waterproof sealant & adhesive used for installing Smart Vents.

WHITE [HB-3100](#)

GRAY [HB-3200](#)



Trim & Sleeve Kit

Standard & Wood Wall

Provides a clean, finished look on interior walls. Adjustable.

7" - 12.5" [1540-531-12](#)

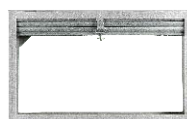
10" - 15.5" [1540-531-15](#)

STANDARD

4" wall depth [1540-573](#)

9" wall depth [1540-573-9](#)

WOOD WALL



Fire Damper

Standard & Wood Wall

UL Certified. For use in fire-rated walls. 2 or 3-hr options available.

STANDARD [1540-530](#)

WOOD WALL [1540-537](#)

Custom Door & Window Flood Barrier

FRA FLOOD PANEL



A custom-engineered barrier that protects any sized opening against intrusion & flood water damage.

The Flood Risk America (FRA) Flood Panel uses sustainable flood-seal technology to protect any opening against flood water & is highly resistant to heavy impact forces. Each panel is custom-engineered to meet individual installation requirements & job-specific demands. It is easy to install, deploy, & remove.



Storefront Protection Door & Window Barrier



Applications

Storefronts | Windows/Doors | Vehicle Access Points | Drain Covers

FEATURES



Storefront Application



Single Door Barrier



Extended Run Barrier With Corner



Durable

Strong Composite Materials



Custom Sizes

Dimensions to Fit Your Needs



Lightweight

Less Than 4 Pounds Per Ft²



Quick Deployment

Panels Are Easy To Transport & Install



Versatile

Gasket Conforms To Uneven Surfaces

Technical Specifications

MATERIAL	High Density Foam Core, Fiberglass Skin, Structural Coating
SEAL	Gasket Compression
HARDWARE	Stainless Steel Anchors
WEIGHT	4 lbs PSF
DESIGN	Meets FEMA & ASCE Requirements
WARRANTY	Lifetime (Panel Only)



Custom Egress Entrance Application



Close Up of Easy-Turn Knob

HAND TIGHTENING TOOLLESS DEPLOYMENT





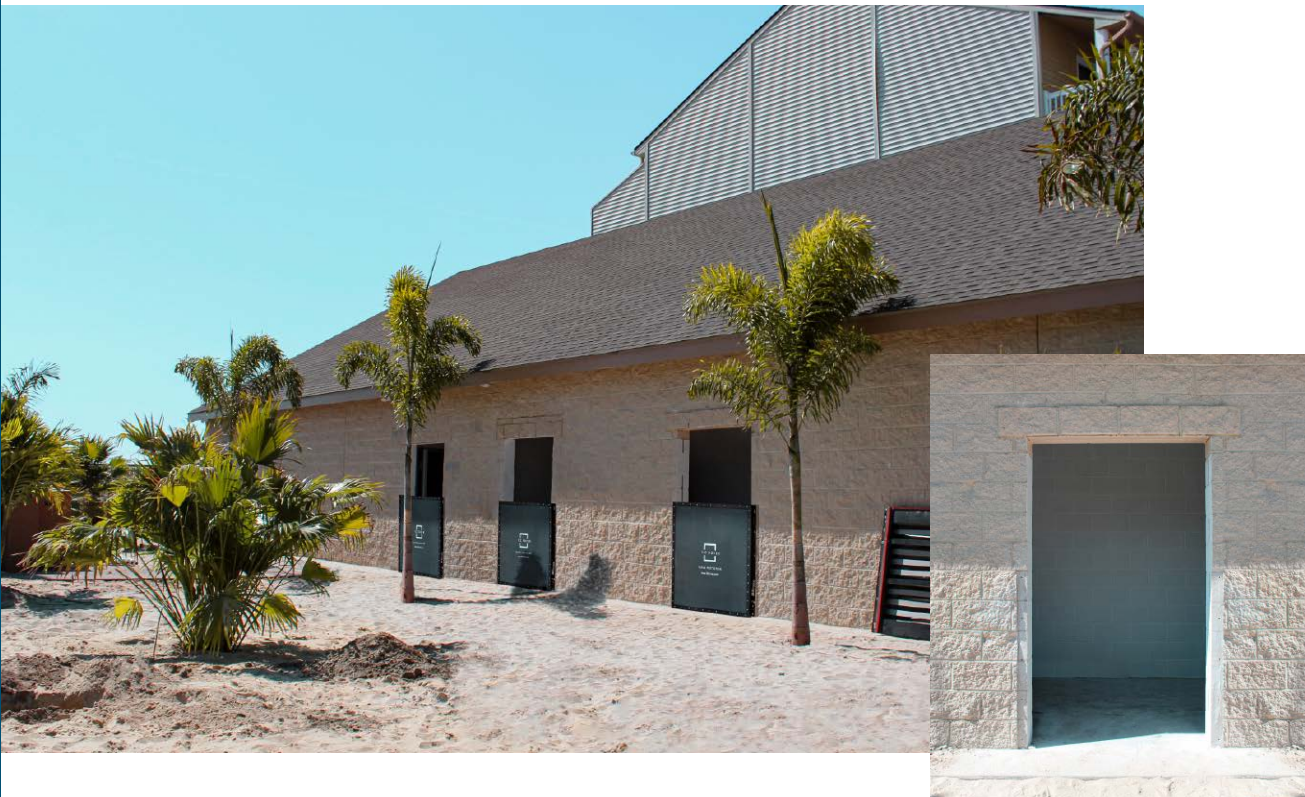
Standard Door Flood Barrier



FLEX-COVER® DOOR BY ILC DOVER

A high-strength single or double door barrier engineered to withstand rushing or standing water.

The Flex-Cover® Door is a high-strength dry flood barrier installed at door and other building openings. It proves watertight and impact-resistant with a structural frame, water barrier, and impact-rated layers with advanced compression gaskets. The Flex-Cover® Door can be stored near the point-of-use, while permanently installed wall anchors facilitate rapid deployment.



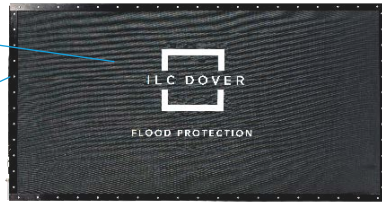
Applications

Storefronts | Building Openings | Entryways

WET SIDE

Impact Cover & Bladder Layers

Handles (not shown)



Compression & Base Gasket Protection

Ground Gasket

FEATURES



Rapid Deployment

1-2 people
5-10 minutes

DRY SIDE

Structural Webbing

Tool Pouch

Structural Cross Members

Wall Interface Gaskets



Scientific research & testing ensures products conform to highest standards of safety & property loss prevention.



High-Strength

Impact-Resistant,
Low Leakage



Corner Post With Connection Posts



Corner Sections Tested Under Load



Wall Interface



Versatile

Conforms To
Uneven Surfaces



Code Compliant

ANSI/FM
2510 Approved

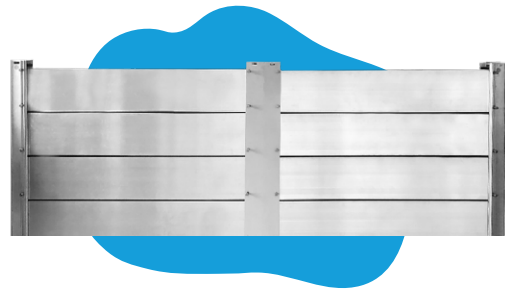


Retractable Gasket

For Protection
During Storage

MATERIAL	Aluminum frame, impact-resistant webbing, water barrier coated fabric, impact cover outer fabric
WIDTH	Single Door - Up to 48" Double Door - Up to 86"
HEIGHT	2' & 4' DFE. If stacked, 6' DFE
DESIGN	International Building Code, ASCE 24-14, ASCE 7-16, ANSI-2510, ASCE 7-10
WEIGHT	2' x 54" - 52 lbs 4' x 54" - 100 lbs 2' x 92" - 74 lbs 4' x 92" - 140 lbs

Flood Logs



MULTIPLE OPTIONS

A customizable, stackable aluminum flood barrier that is a time-tested solution for flood or hurricane prone locations

The Flood Log system is designed to be resistant to impact forces & withstand high-velocity water loads. Ideal for uses where higher protection is needed. Meets ASCE & FEMA requirements.



Front Entrance Barrier

Applications

Storefronts | Select Windows | Doors | Vehicle Access Points

MOUNTING OPTIONS JAM | OFFSET | FLUSH



Corner Bend



Extended Flush-Mounted Run



Offset Bracket Gives Wall Clearance

FEATURES



User Friendly
Color Coded For Guided Assembly



Durable
Interlocking Planks that fill with water to increase strength

STACKABLE "C" POSTS

Flood Logs are strengthened by stackable "C" shaped posts & hollow aluminum beams fitted with watertight rubber seals, ensuring maximum stability & flood protection. Each support post can easily be removed, minimizing aesthetic impact to any building.



Versatile

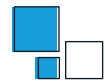
Engineered to Accommodate Slopes of 20°



Storefront Window Barrier



Commercial Window Barrier

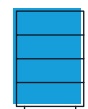


Custom Sizes

Dimensions to Fit Your Needs



Stages of Set Up for Flood Logs. Color Coded For Easy Assembly



Storage Solutions

Custom Rack Configurations Available

DIMENSIONS

Customizable

MATERIAL

Aluminum Log Panels, Compression Gaskets

IMPACT RESISTANT

Yes

Flood Plank System



INVISIBLE FLOOD CONTROL WALL™

Removable aluminum flood wall custom-engineered for larger applications and higher protection.

The IFCW system is composed of gasketed aluminum planks and steel posts which are quickly mountable and watertight. It is erected when flooding is imminent and then easily disassembled and stored, leaving an unobstructed view of the area with no protrusions.



IFCW Perimeter System

Applications

Airports | Museums | Riverfronts | Schools | Urban Buildings | Manufacturing Facilities



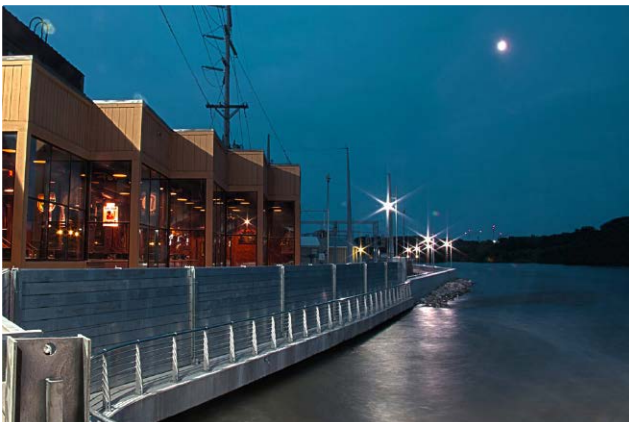
One World Trade Center



Corner Post Installation

The IFCW has extruded aluminum planks that simply stack between the steel supports with a gasket on the "dry" side. During a flood event, the planks fill with water, adding strength and load capacity to the whole system while helping to protect against impact loads.

The IFCW is manufactured and sourced in the United States and has been analyzed and accepted for use by the United States Army Corps of Engineers, and is in use on hundreds of installations across the USA and Canada.



Riverfront Application



Angle Braces

Due to its stackable design, the IFCW can be deployed in multi-height increments depending on the situation. If the property is expecting minimal flooding or facing time constraints, a lower-height wall could be installed for that instance.



Largest Removable Flood Wall Installation in USA

Holman Field, St. Paul Downtown Airport



Deployment In Progress

FEATURES



Higher Protection

Intermediate Support Design. Heights of 20'+ Possible



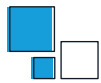
Durable

Support Posts Anchored To Reinforced Foundation



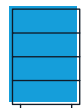
Discreet

Base Plates Minimally Visible. No Protrusions



Customization

Custom Corner Angles. Jogs, Step-Ups, Multi-Heights & Lengths



Storage Solutions

Minimal Storage Space. Optional Pallet & Containers Available.

MATERIAL

Galvanized Steel Posts, Aluminum Planks

PLANK WEIGHT

5.5lb/ft

PLANK LENGTH

Typical 20'

SYSTEM HEIGHT

Up to 20' or More

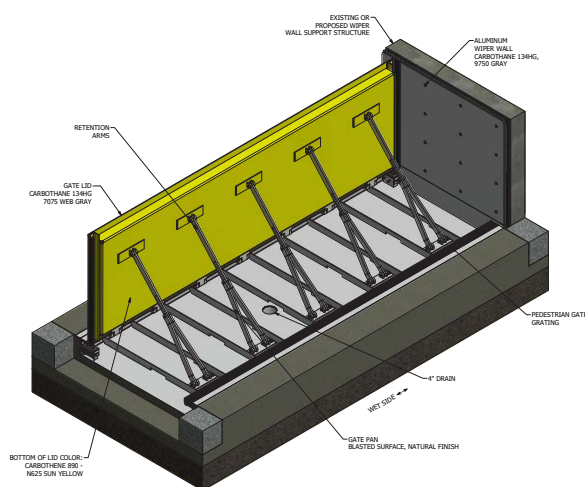
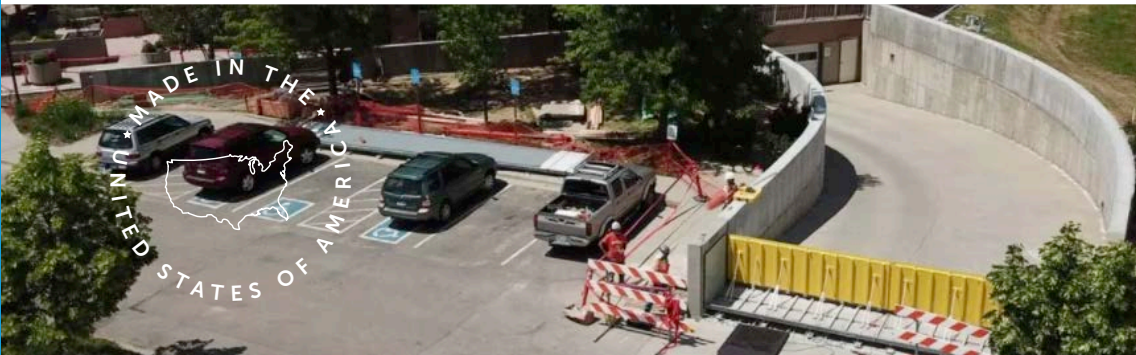
Horizontal Passive Flood Barrier

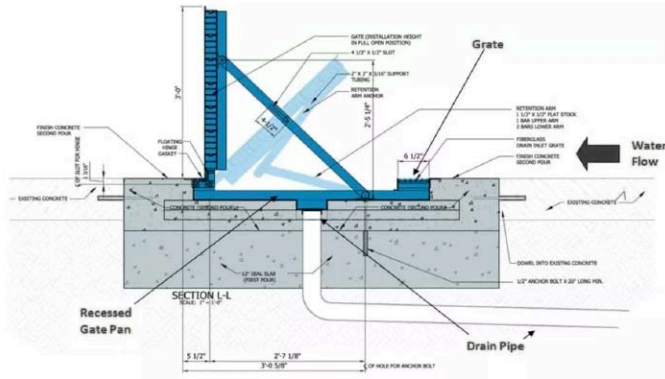
FLOODBREAK®



A low-maintenance, self-clearing passive flood barrier that remains hidden until activated by floodwater

With over 2,500 flood barriers installed worldwide, the FloodBreak® flood control system is a passive flood barrier that closes automatically to prevent water entry, activated by rising floodwater. With no reliance on people, power, springs, or mechanical assistance to lift the gate, failure points are eliminated. The systems are low maintenance, self-clearing and don't require any lubrication so they will operate when needed 24/7.





FEATURES



Always Ready
Does Not Need
Manual Activation



Discreet
Remains Underground
At Resting Position



No Storage Needed
Remains Hidden Until
Activated by Floodwater



No Electric
Operates Without Human
Intervention/Electricity

The concept is simple—let the water work against itself to automatically float the buoyant aluminum beam and activate the self-sealing rubber gasket. The higher the water rises, the higher the flood barrier is lifted until it reaches full deployment and is held closed by the hydrostatic pressure. When the water recedes, the flood barrier returns to its recessed location in front of the entryway, allowing vehicle and pedestrian passage to resume.



Technical Specifications

SIZE	No height or width restrictions
SEALS	Ethylene Propylene Diene Monomer
MATERIAL	Marine Grade Aluminum, Stainless Steel Fittings
ANCHOR	Poured Concrete Slab

Applications

Buildings & Garages | Levee & Waterfronts | Flood Walls | Multi-Family | Residential



Loudres Hospital, Binghamton, NY



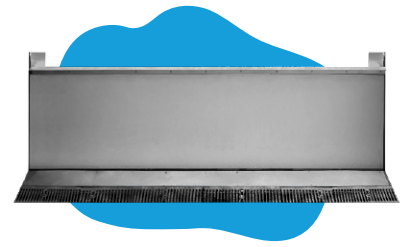
UTMB Primary Care Back Entrance, Galveston, TX



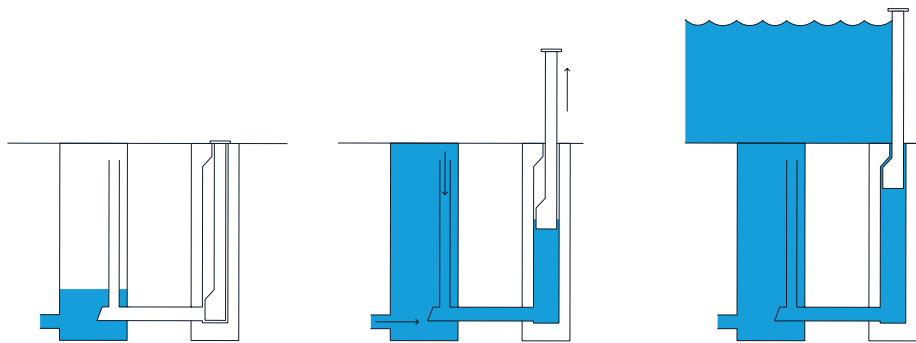
Durable
Long Service Life With
Minimal Maintenance

Vertical Passive Flood Barrier

SELF CLOSING FLOOD BARRIER™



A vertically-deployed, flood-triggered barrier that protects building openings from extremely high water levels.



Resting Position

In non-flood conditions, all operational parts are concealed in an underground basin.

Deployed Position

As floodwater rises to a predetermined level, an inlet pipe fills the basin, making the flood wall float up.

Fully Deployed

When the basin is full, an angled support block locks the flood wall into position making it watertight.

FEATURES

HIGH WATER PROTECTION

This flood defense system uses approaching floodwater to raise its barrier, using the problem to create the solution, protecting from heavy rainfall, gales, or rapidly melting snow.



Always Ready

Does Not Need Manual Activation



Discreet

Remains Underground At Resting Position

Applications

Storefronts | Windows/Doors | Access Doors | Entire Perimeter



No Storage Needed

Remains Hidden Underground Until Triggered

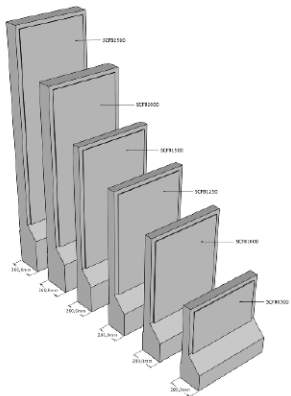


No Electric

Operates Without Human Intervention Or Electricity

Technical Specifications

SIZE	Custom
PANELS	PUR foam core & fiberglass outer layer
SEALS	Long-lasting, durable gaskets
BASIN	Poured Concrete or Steel
ACTIVATION	Pipe Connection, Inspection Pit, Inspection Pit with Pump, Water Runnel, or Water Runnel with Quick Fill System.



User Control

Optional Manual Deployment

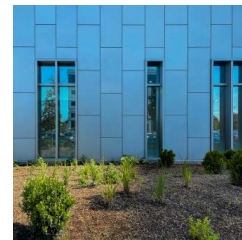
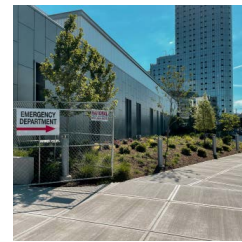


Floodproof Window Systems

FENEX



Impact-rated, floodproof windows that provide clarity, beauty, + passive protection at all times.



Floodproof windows are passive systems that are always ready to protect from rising flood water + debris impact. They are hurricane impact-rated and tested to withstand more than 10' of water + large missile collision. No storage, installation, or deployment needed before a flood event. Multiple framing options available including customizable shaped systems.

FEATURES



Framing Options
Factory-Glazed Configurations



Custom Configurations
Any Shape. Tint & Print Also Available



Historical Flood Window Application



Applications

Oversized Storefront Window Solutions | Commercial & Residential Window Systems



Energy Efficient
Insulated Assembly Options

Tested To Exceed ANSI/FM 2510 Standards For Impact Up To 1000 lbs



Impact Test on 4' x 6' Flood Window



Load Test of 9' of water on 20' x 11' Flood Window



Tested
Water & Debris Impact



FL Product Approval
Oversized, Skylights & Fire Windows

Other Fenex Products



Oversized & Curved Windows



Walkable Skylights



Fire & Ballistic Windows

Glass Flood Wall System

FENEX



A customizable, glass flood wall that provides passive protection along coastal environments without obstructing the view



Glass Flood Barriers are passive systems with a unique design and multiple options. It's always ready to protect from rising flood water and debris impact and requires no installation before a storm. This barrier can be used for hospitality, government, or commercial buildings near any water or flood source.

FEATURES



No Storage Needed

Always Remains
In Place



Always Ready

No Need to Deploy
Before Flooding



Enhances The View

Doesn't interfere with
walkway or view



Custom Configurations

Oversized panels
and print options



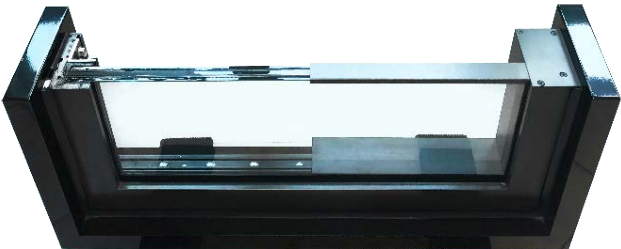
Tested

Water + Debris
Impact



Applications

Bulkhead & Seawalls | Coastal Properties | Hospitality



These flood wall systems can be installed with a variety of frame options and can even be designed for use as a handrail. The system also has a tamper-proof cap that protects the glass and inner layer from being exposed to the elements.

Tested to Meet ANSI/FM2510 Standards for Water Loading



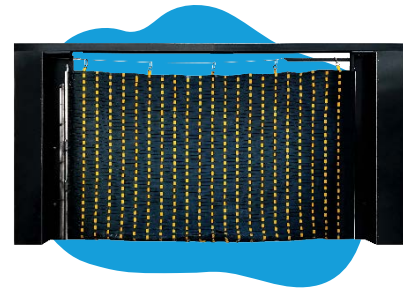
4x8' Sections Holding 4' of Water



Filling Custom-Built Test Rig

Point-of-Use Flood Barrier

FLEX-GATE® BY ILC DOVER



A high-strength fabric wall engineered to withstand rushing or standing water.

Side-Deploy



Flex-Gate® Side Deploy

Customizable, textile-based fabric with Kevlar® structural layer, stored at point of use in container and extends to receiver.

CUSTOM HEIGHT & WIDTH



Scientific research & testing ensures products conform to highest standards of safety & property loss prevention.

Flex-Gate® FW2510

High-strength side-deployed fabric with Kevlar® structural layer, stored at point of use that extends across opening and connects to a receiver.

FM TESTED 6' MAX HEIGHT | 21' MAX WIDTH

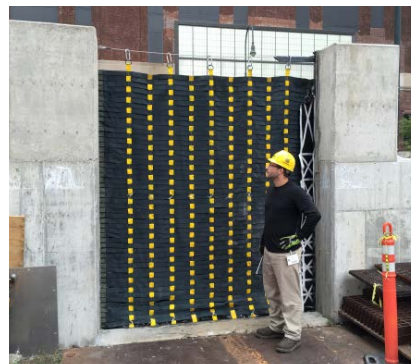
Bottom-Deploy



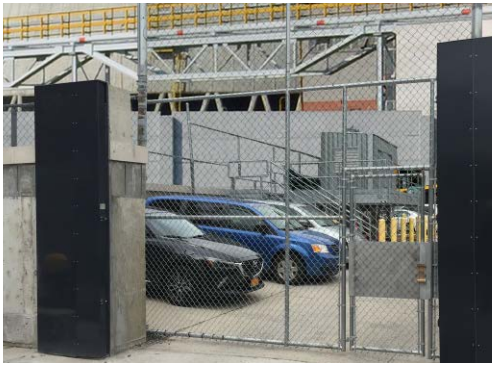
Flex-Gate® Bottom Deploy

Scalable design, textile-based materials and metal posts that reside in a point of use container and are manually deployed.

CUSTOM HEIGHT & WIDTH



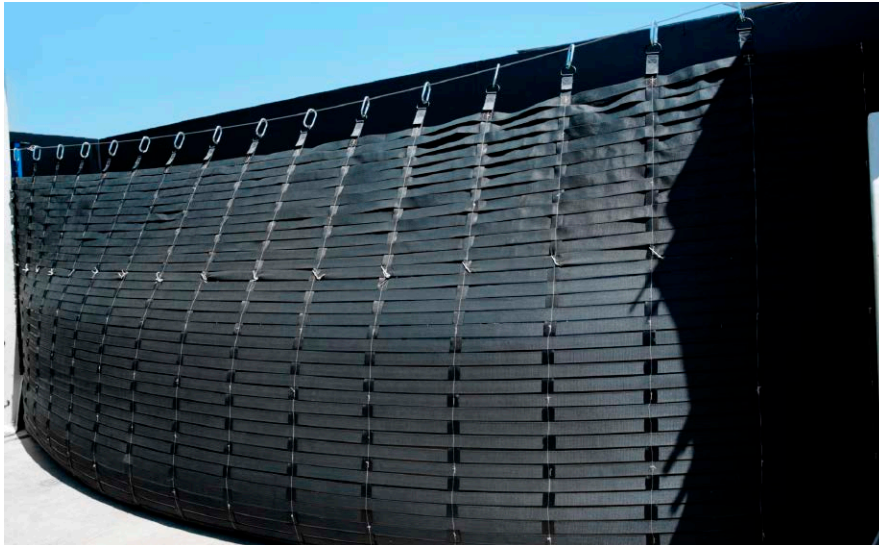
Flex-Gate® Side Deploy



Storage & Receiving Containers



Egress Area With Support Posts



Deployed Gate Under Flood Load



Storage Container



Deployed Gate

FEATURES



Point-of-Use

System Stored At
Opening For Location



Rapid Deployment

Quickly Deploy &
Retract As Needed



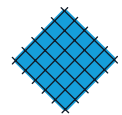
Custom Sizes

Dimensions to Fit
Your Needs



Versatile

Conforms To
Uneven Surfaces



Durable Material

Kevlar® Structural Layer & PVC-
Coated Polyester Layer

Applications

Buildings | Equipment | Power Stations | Critical Infrastructure

MODEL	PROTECTION HEIGHT	CONTAINER	FLOOD PROTECTION	DEBRIS IMPACT
FGSD FW2510	1'-6'	Above-Ground Metal Box	<0.08 gal/hour/ linear foot of perimeter (FM Approved)	Yes
FGSD	Any	Above-Ground Metal Box	<0.5 gal/min/ft of perimeter	Yes
FGVD	Any	Trench & Cover	<0.5 gal/min/ft of perimeter	Yes



Standard Perimeter Flood Barrier

MUSCLE WALL®



A rapidly-deployed, portable flood barrier engineered to withstand rushing or standing water.



Muscle Wall can replace thousands of sandbags all while being quick, easy, reusable, reliable, & customizable. It is engineered to withstand the immense force of rushing or standing water due to its patented toe design.



Extended Run of Muscle Wall

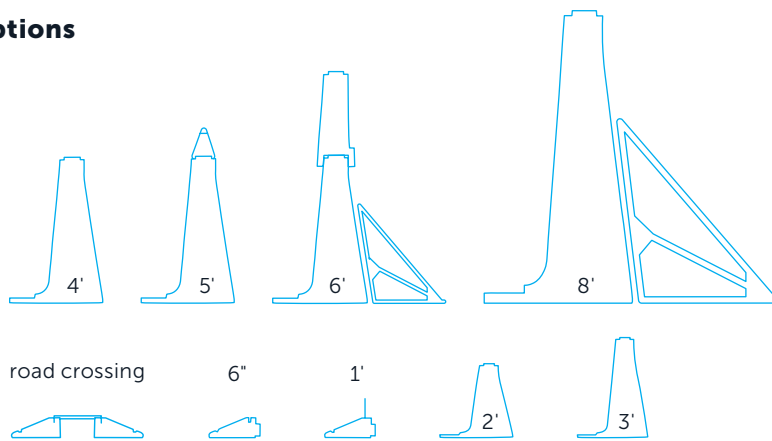


Muscle Wall Protecting Battery Park in New York City

STRONGER THAN STRONG

Water pressure forces the toe downward anchoring the wall to the ground while containing & diverting water. Unlike sandbags, it is rapidly deployed, portable, & easily disassembled. Once sections & liner are in place, fill with water.

Sizing Options



Muscle Wall Protecting Battery Park in New York City (Using Wrap Liner Option)

Applications

Flood Control | Containment | Stormwater Management | Road Crossings

FEATURES



Standard Sizes

Ready to Ship & Deploys With Ease



Interlocking

Tongue & Groove Allows 15° Max Bend



Flexibility

Corner Provides 90° Turns



Stackable

Easily Stacked for Storage



Liner Options

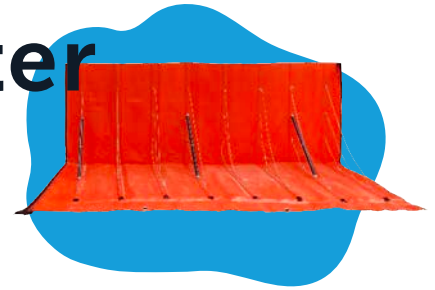
Versatile Wraps For Multiple Surfaces



Scientific research & testing ensures products conform to highest standards of safety & property loss prevention.

Custom Perimeter Flood Barrier

DILUVIUM™



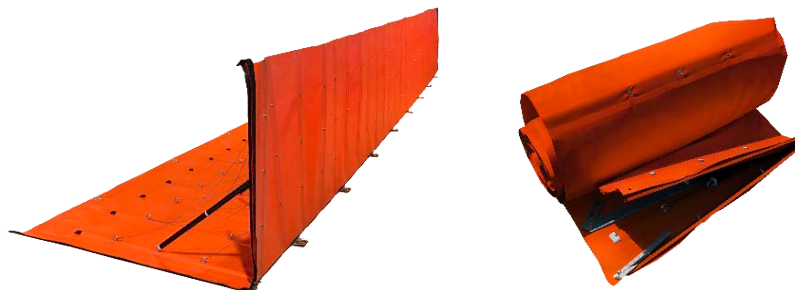
A lightweight, reusable, easy to set up flood barrier that rapidly deploys & retracts.

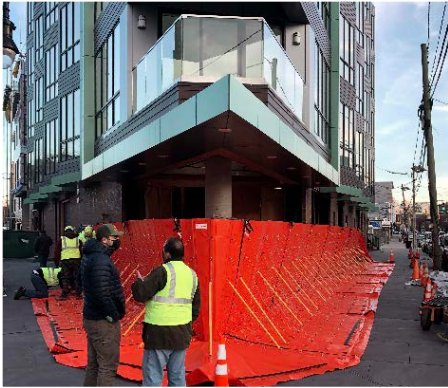
The Diluvium™ Flood Barrier is ideal for any sized commercial property or home. Weighing less than a pound per square foot makes it easy to transport, while heavy-duty waterproof zippers facilitate quick, simple setup.



Applications

Flood Control | Containment | Stormwater Management | Road Crossings





EASY ASSEMBLY

Diluvium™ can be set up with just one person if necessary, but adding a few more people can speed up the process. Attach multiple pieces together as needed with double waterproof zipper connection.

REUSABLE

Diluvium™ can be set up anywhere - having corners and being held upright by fiberglass batons and stainless steel cables. During a flood, water presses down, sealing the skirt. After the flood recedes, it can easily be packed up and stored until needed again.

EASY TRANSPORTATION & STORAGE

Light-weight & portable. Can be shipped directly to you. Minimal storage space required, meaning it can be kept on site and ready for deployment.



FEATURES



Customizable
Zip Together
Unlimited Sections



Corner Sections
Any Angles
Available



Easily Stored
All Components
Roll Up



User Friendly
Easy To Assemble
& Disassemble



Efficient
Reusable &
Portable

DIMENSIONS	WEIGHT	MATERIAL	SEAM CONSTRUCTION
Customizable	.75 lb per sq ft.	Engineered Industrial Fabric With Fiberglass Support & Stainless Steel Reinforcements	No stitching

Collapsible Perimeter Flood Barrier



RAPID-H2O™

A lightweight & portable flood barrier that deploys quickly with no heavy equipment required.

The Rapid-H2O™ flood barrier is an innovative flood control system that is easy to deploy and retract. Once on site, there is no heavy equipment required for full deployment or retraction and the system is reusable, which keeps costs down.

NO COSTLY SAND-FILLING OR CLEANUP



ONE SECTION FILLED WITH WATER = 11,000 LBS

Applications

Flood Control | Infrastructure | Stormwater Management | Road Crossings

NO HEAVY EQUIPMENT REQUIRED



Protection From Shore Overflow



Easily Fit Sections In A Pickup

FEATURES



Standard Size

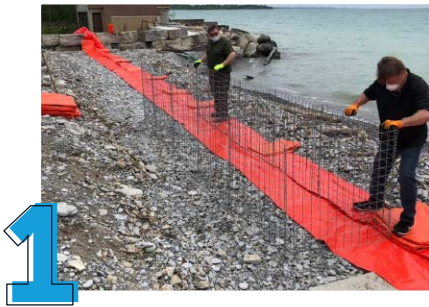
One Size Makes Deployment A Breeze



Quick & Easy

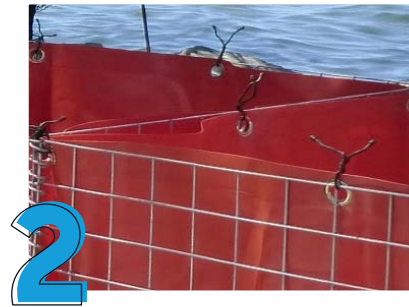
Rapid Deployment & Retraction

QUICK, 4 STEP DEPLOYMENT



1

Unfold cage on top of liner



2

Line cages with reservoirs



3

Fill using an available water source



4

Pull liner over barrier



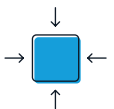
Efficient

Reusable & Extremely Cost Effective



Durable

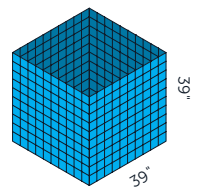
Multi-Layer Polymeric Reservoir, Military Grade Steel Frame



Compact

100 Linear Ft Can Fit In A Pickup Truck

HEIGHT	LENGTH	PROTECTION	MATERIAL
39"	16.4' Sections	28" High	Multi-Layer Polymeric Reservoir Military Grade Steel Frame



ONE RESERVOIR SHOWN

CONNECT UNLIMITED SECTIONS TOGETHER



Flexible Tube Flood Barrier



TIGER DAM™

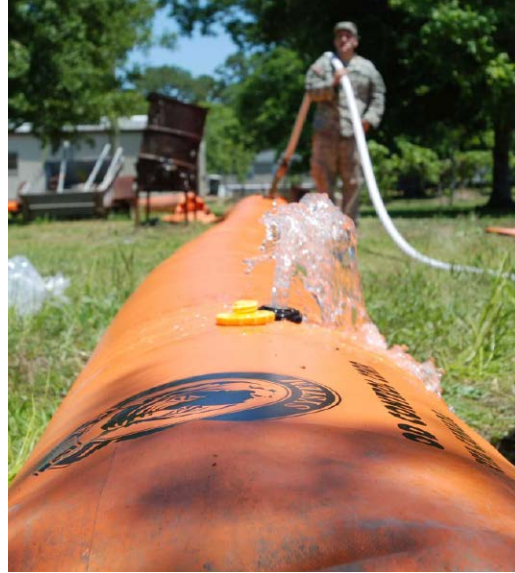
A long, flexible tube that can quickly be joined end-to-end, stacked to various heights & filled with water.

This system forms a barrier to protect buildings, properties and any other structures prior to a flood. Each tube can be filled in minutes with a 2-inch pump, a fire hydrant or a garden hose. The tubes are capable of being stacked up to a maximum of 32 feet high and linked together seamlessly for miles. They can be virtually any length and take any shape.



Applications

Flood Protection | Critical Facilities | Commercial & Residential | Road & River Crossings | Containment

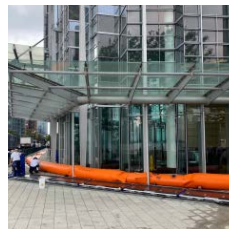
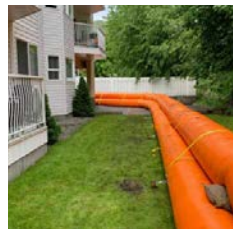


The dams are filled individually and secured with straps and anchors if needed. After the flood waters have receded and the dam is no longer required, the system can be drained, cleaned and packaged for storage. The Tiger Dam™ flood protection system has been thoroughly tested at The University of British Columbia, and is Platinum Certified by the U.S. Army Corp. of Engineers, the Association of State Floodplain Managers, and FM Approvals.



STANDARD HEIGHTS	LENGTH	MATERIAL
18", 24", 30", 36" & 42" H	50' Sections	Heavy duty double-coated nylon/PVC

CONNECT UNLIMITED SECTIONS TOGETHER



FEATURES



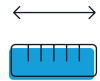
Deploy Quickly

Rapid deployment when filled using fire hydrant



Flexible

Can be turned at any angle to fit any shape



Connectable

Can be connected to fit any length



Stackable

Buildable System. Engineered to 32 ft



Efficient

Reusable & Cost Effective



Scientific research & testing ensures products conform to highest standards of safety & property loss prevention.

Sand-Filled Flood Fighting System

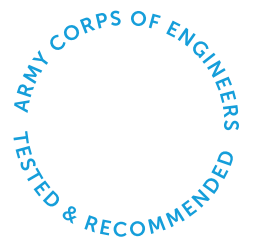
PERMASHIELD™



A fillable, multi-cell barrier system, designed for long-run applications that can be stacked to any height.

When filled with sand, Permashield's patented trapezoid shape redirects lateral water pressure downward, holding back floodwaters and resisting rolling and sliding. Can be easily stacked to almost any height and sections can be strapped together with a 3000lb tensile strength nylon strap to build one continuous flood wall.

Permashield has been rigorously tested by the USACE and is a proven stand-alone flood fighting barrier. The heavy duty, woven polypropylene coated fabric is highly resistant to damage from debris impacts and is resistant to contamination and seepage into the bag contents. If damage occurs, the design isolates damage to the impacted cell.



Applications

Flood Protection | Cofferd Dam | Levee Strengthening | Dune Stabilization



4' High Waterfront Protection, Peoria, IL



Duke Energy, 8' Protection Height

Mounting Hangers & Installation Sled with Hopper Speed Up Deployment



PermaShield cells are loaded into sled using mounting hangers and expand out to open as the cells are filled using attached hopper.

FEATURES



Trapezoidal

Shape Engineered to Hold Back Water

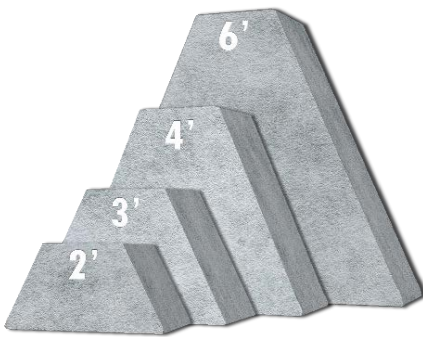


Stable

Doesn't Move Under High Pressure

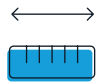
Sizing Options

SOLD IN 50' LONG SECTIONS



Stackable

Bags Layered To Reach Any Height



Custom Length

Can Be Connected For Long Runs

HEIGHTS

2', 3', 4', 6' Stack to Any Height

LENGTH

Connectable 50' Runs

MATERIAL

Woven Polypropylene-Coated Fabric

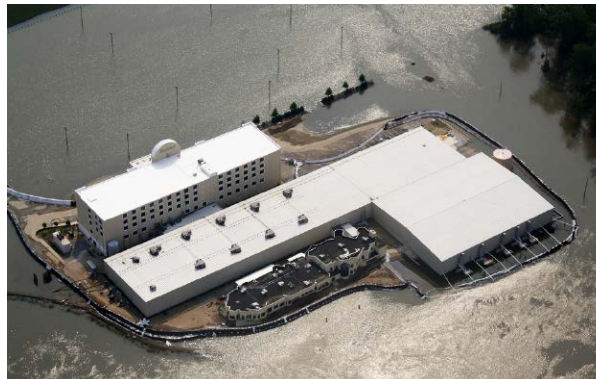


Impermeable

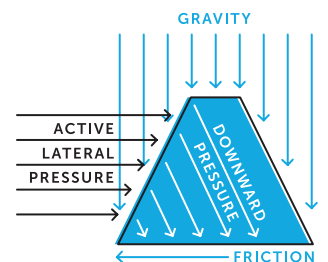
Watertight From Seepage & Contamination



Roadside Levee Strengthening, KY



Harlow's Casino, MS. 7.5' of water for 31 days.



Sand-Filled Flood Fighting System

VERSASHIELD™



A fillable, multi-cell barrier system, designed for short-run applications that can be stacked to any height.

This rapidly deployed and cost-effective sandbag alternative can be filled, used, cleaned out and then reused again to continue to protect homes and business from flood water. The trapezoidal shape resists sliding and rotational forces, using gravity and system weight to self-stabilize. The standard-sized systems can be stacked and connected for additional coverage and a variety of applications.





Connected 2' x 4' VersaShield Filled With Sand



Strap & D-Rings to connect VersaShield

HEIGHT	LENGTH	WIDTH	FILLED WEIGHT
1'	3'	27"	500 lbs
2'	4'	36"	2,800 lbs



Applications

Flood Protection | Coffer Dam | Sentiment Capture | Secondary Containment



FEATURES



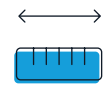
Stable

Doesn't Move Under High Pressure



Stackable

Bags Layered To Reach Any Height



Custom Length

Can Be Connected For Long Runs



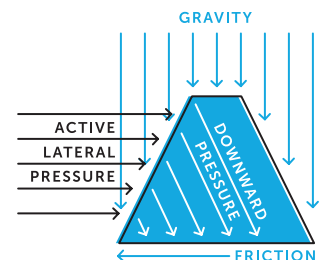
Impermeable

Watertight From Seepage & Contamination



Transportable

Integrated Handles to Easily Relocate



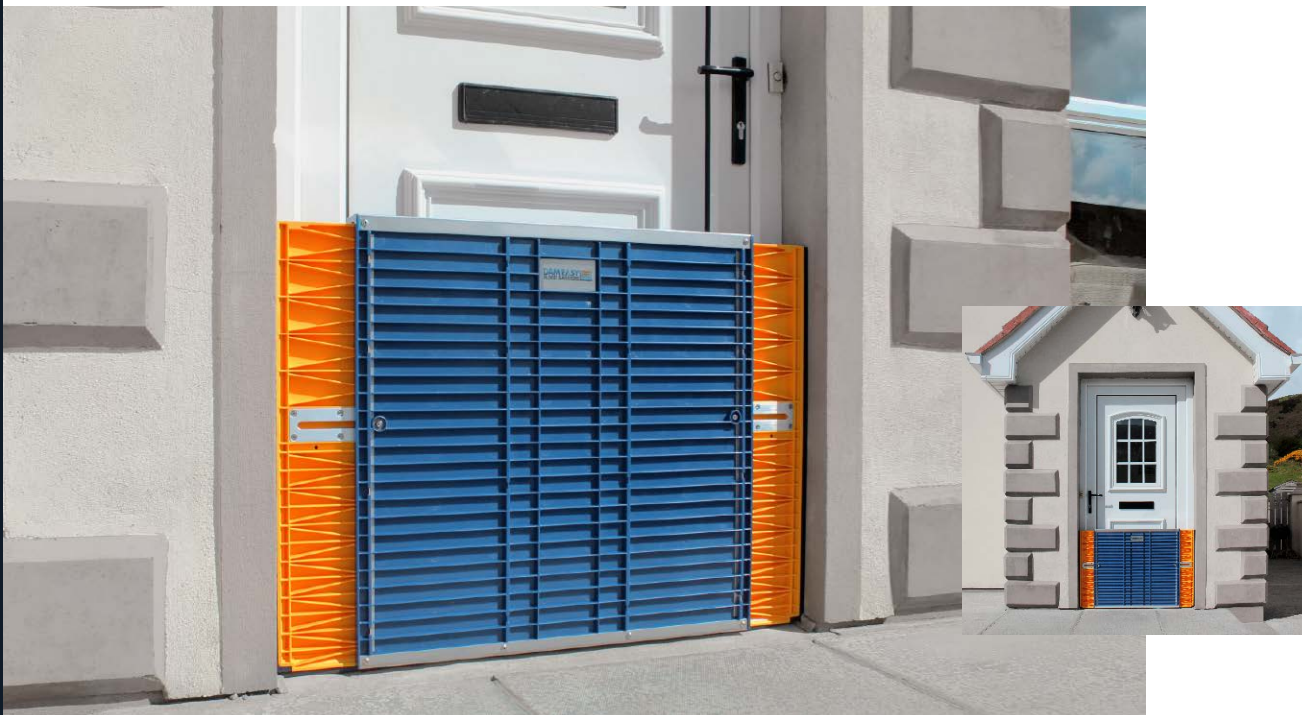
Residential Flood Barrier

DAM EASY®



A ready-to-use flood barrier for doors & entryways that can easily be installed in under 5 minutes.

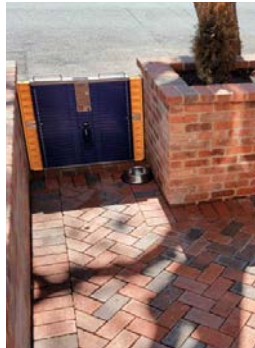
There's no need for damaging hardware, adhesives or permanent fixtures when using Dam Easy—simply place between an entryway, extend the sides to fit the opening, and inflate the built-in tube. This simple solution replaces the time, energy, and mess associated with sandbags and can be installed in under 5 minutes.



Applications

Residential & Commercial Doorways | Garages | Patio Doors

Ready to Use. Easy to Install. Simple to Store.



HEIGHT	PROTECTION HEIGHT	WIDTH	DEPTH	WEIGHT
29.5"	28"	31 - 43"	2.5"	45 lbs

Needs 36" of clearance above for pump mechanism



Extension Poles Available. Some Installation Required.

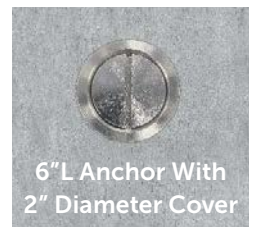
A core-drilled hole and anchor rod is required for initial installation and allows for the quick placement & removal of the extension pole. A cap covers the opening when not in use.

1 POLE
2 BARRIERS
66" - 89"

2 POLES
3 BARRIERS
96" - 135"

3 POLES
4 BARRIERS
129" - 184"

4 POLES
5 BARRIERS
162" - 227"



FEATURES



Convenient

Deploys in Under
5 Minutes



Easy To Install

No Permanent
Fixtures



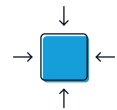
Standardized

Fits Most
Regular Openings



Connectable

Extension Poles for
Wider Openings

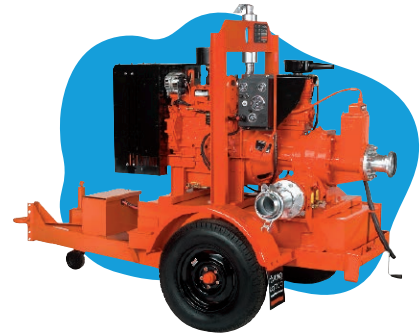


Compact

Minimal Storage
Needed

Flood Pumps

GODWIN



Dry floodproofing designs require heavy duty pumps that remove water to prevent it from reaching critical spaces.

FM APPROVED

FP Dri-Prime



FP Dri-Prime
FP100, FP150, FP225, FP300

The Godwin FP Dri-Prime Series pump is specifically designed to prevent flood water from reaching critical building systems & interior spaces. It's tough, smart, and versatile, making it one of the most effective flood mitigation tools.



FM Approved
Rigorously tested through simulation & component.



Flow Range
500 GPM to over 5000 GPM



Diesel
Diesel drive options



Many Sizes
Multiple Suction Branch Sizes (4"-12")



Convenient
Run Dry Capability



Sound Levels
Open set or sound attenuated enclosure



Remote Operation
Option to control from any device

Applications

Flooding | Construction | Industrial Dewatering | Basements

ELECTRIC

Submersible



Submersible Pumps

GSP05 1/2hp | GSP10 1hp

Compact & portable with a lightweight yet durable design equipped with dry-running capabilities.



Submersible Trash Pumps

GST05 1/2hp | GST10 1hp

Compact & portable with a lightweight yet durable design equipped with dry-running capabilities. Able to pass solids up to 1 inch.

GASOLINE DRIVEN

Wet-Prime



Dewatering Pumps

2" GWP-50HX | 3" GWP-80HX | 4" GWP-100HX

Durable design for reduced wear and maintenance. Semi-trash handling capability.



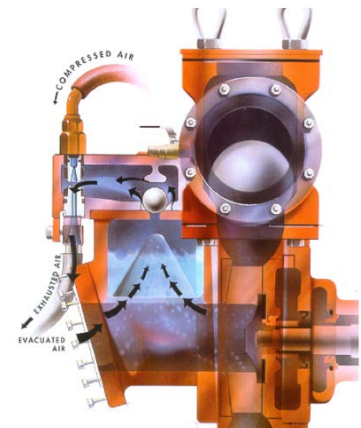
Trash Pumps

2" GTP-50HX | 3" GTP-80HX | 4" GTP-100HX

Designed to handle solids. Durable design for reduced wear and easy maintenance for fast debris removal.

Technical Specifications

MODEL	HP	MAX FLOW	MAX SOLID	RPM	VOLTAGE
GST05	0.5 kw	0.5 gpm	1"	3600	115, 230
GST10	1.0 kw	1.0 gpm	1"	3600	115, 230
GTP - 50HX	5.5 kw	185 gpm	1"	N/A	x
GTP - 80HX	8.0 kw	354 gpm	1.5"	N/A	x



Applications

Flooding | Construction | Trash-Laden Water | Septic Tanks | Manholes

Get In Touch

