



modern murphy beds & space saving solutions

TRANSFORM SPACE with ONE EASY MOTION



Experience

We are the world's leading innovator and manufacturer of multifunctional contract furniture. Using innovative engineering, we revolutionized murphy beds into truly multi-functional and stylish pieces. Thousands of InovaBeds are in use daily at hotels, resorts, time-shares, cruise ships, multi-family properties, and student housing.

Expertise

For over 20 years, we have listened to and learned from our customers on what is truly important. We understand you need a partner, not another supplier. Dedicated to consistent high quality and a great customer experience, our team is committed to meet your needs and exceed expectations. We offer a full range of services, beginning with design collaboration and space planning to complete delivery, distribution, and installation of our products.

Equipped

Proudly made-in-the-USA, our furniture is created by highly-skilled engineers, designers, and crafts people at our state-of-the-art, 78,000 sf factory located in Upstate New York. Unlike other wallbed manufacturers, our facility is designed to produce InovaBeds and cabinetry in volume.

About
Us





TABLE OF CONTENTS

Page	Product
14	Sofa WallBed
18	Sofa-WallBed Sectional
28	TableBed
34	WallBed
40	Flip-Bed Series
52	WorkCube & WorkCube mini
64	Nightstands
66	Cabinetry
68	Electrical
Page	Selections
80	Pull Options
82	Powder Coat Colors
83	Veneer Finishes
84	Laminate Finishes
85	Lacquer Finishes
86	Fabrics
Page	Other
3	About Us
6	Hospitality
10	Multi-Family
70	Green Initiatives
72	Our Services
98	Specifications
119	Warranty



Furnish with flexibility in mind

Hospitality





Guest Rooms



Ideal for
business
travelers during
the week and for
families on the
weekend



Create living space

Accommodate additional
guests without compromising
privacy



Resorts

Boutique & Micro Hotels



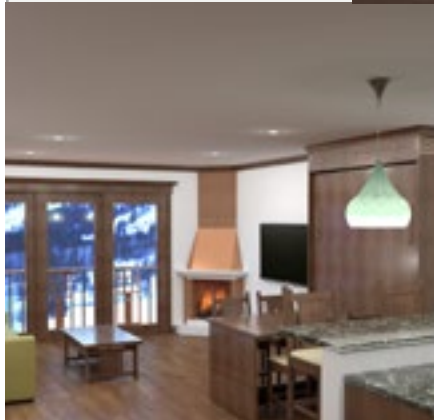
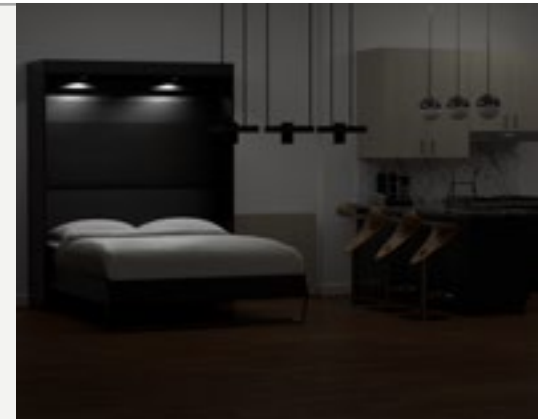
Maximize
space in small,
unique-shaped
rooms



Meeting Rooms

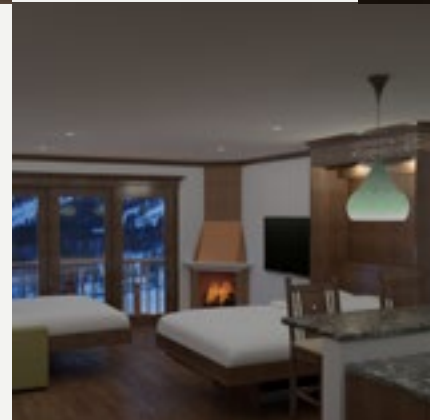


Discreetly included option when needed



Expand Options

Comfortable solution for maximizing accommodations during an extended amount of time



TimeShares

Reception Suites

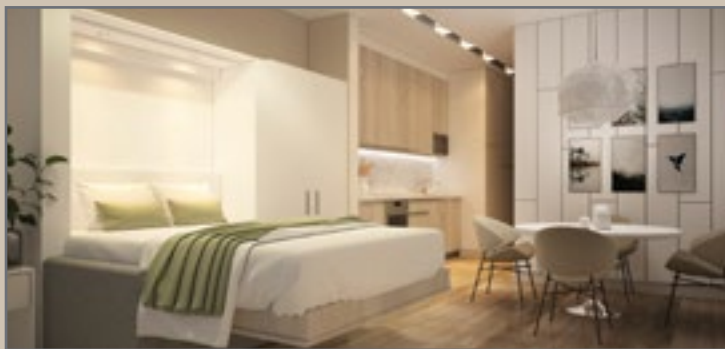


Ideal for almost any type of gathering



Maximized living for small spaces

Multi-Family





Studios



Hassle-free living

No need to own and
move-in furniture



Create open space

Without altering the floorplan
or adding square footage



Micro apartments

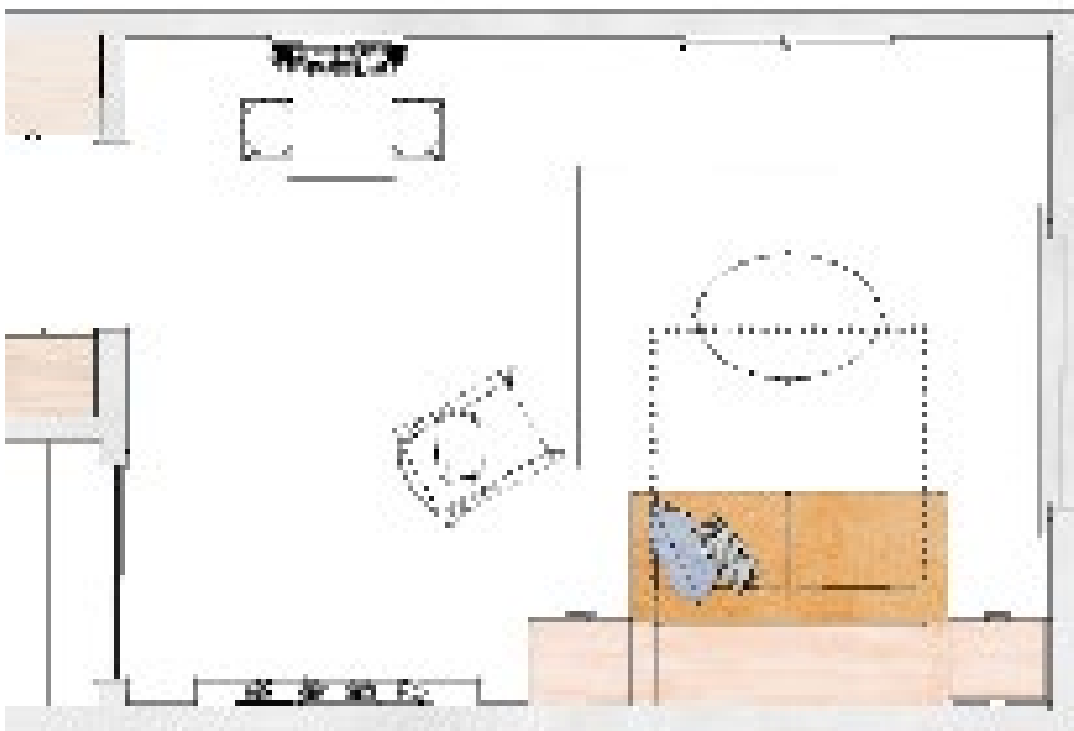
Corporate Rentals



Affordable,
convenient, and
private for those
looking to live in
a high-demand
location



GAIN 40SF OF LIVING SPACE



Increases livable space within the same footprint!

Sofa-WallBeds "give back"
40 SF of space compared to a traditional bed
and sofa combination!

TableBeds "give back"
40 SF of space compared to a traditional bed,
table, and desk combination!

Sofa-WallBed

Vertical multi-functional bed featuring both a Bed and a Sofa

- Free-standing unit, eliminates need to attach to the floor or wall
- Passes reliability testing of 15,000 bed raising and lowering cycles
- Accommodates 11" thick standard pillowtop mattress
- Seat cushions are reversible
- Various finish and style options available for both the bed cabinet and sofa



No need to
remove or
store cushions.

They automatically
tuck inside
as it transforms
from Sofa to Bed.

How it works



Bed Up/Sofa Position

Our patented EasyMotion feature eliminates the need to remove and store sofa cushions. Simply place hand on a pull and open.



Transition

As the bed is lowered, the seat and back of the sofa automatically pivot and tuck under the structure as it transforms from sofa to bed. The mechanism is spring loaded and intentionally hovers at a 45 degree angle for safety purposes.



Bed Position

The bed is fully supported by the sofa frame and does not require additional legs or mounting to the wall or floor. The mattress, including the bedding, is held in place by gravity. No strapping needed.



Sofa-WallBed Sectional

Vertical multi-functional bed featuring both a Bed and a Sectional Sofa

- Free-standing unit, eliminates need to attach to the floor or wall
- Passes reliability testing of 15,000 bed raising and lowering cycles
- Accommodates 11" thick standard pillowtop mattress
- Seat cushions are reversible
- Various finish and style options available for both the bed cabinet and sofa



**Creates
a
Suite
all-in-one!**

How it works



Bed Up/Sofa Position

Our patented EasyMotion feature eliminates the need to remove and store sofa cushions. Simply place hand on a pull and open.



Transition

As the bed is lowered, the seat and back of the sofa automatically pivot and tuck under the structure as it transforms from sofa to bed. The mechanism is spring loaded and intentionally hovers at a 45 degree angle for safety purposes..



Bed Position

The bed is fully supported by the sofa frame and does not require additional legs or mounting to the wall or floor. The mattress, including the bedding, is held in place by gravity. No strapping needed.



Styling

The following are available options for the Sofa-WallBed and the Sofa-WallBed Sectional



Styling

Standard Sofa-WallBeds offer a variety of styling options

Size

Full

Queen

Hotel King

Bed Cabinet

Finishes - pages 83-85

Pulls - page 80

Crown Cap options - page 75

Piers - page 27

Mattress - up to 11" thick

Electrical - all beds include LED puck lights; on/off switch with dimmer &

InovaHub - page 68

Sofa

Cushions: 2 Back & 2 Seat, with welting

Arm Style - page 25

Skirt Style - page 26

Fabric Selection - COM or choose from the variety of fabric options we offer - pages 86-96

Styling

Standard Sofa-WallBeds offer a variety of styling options

Size

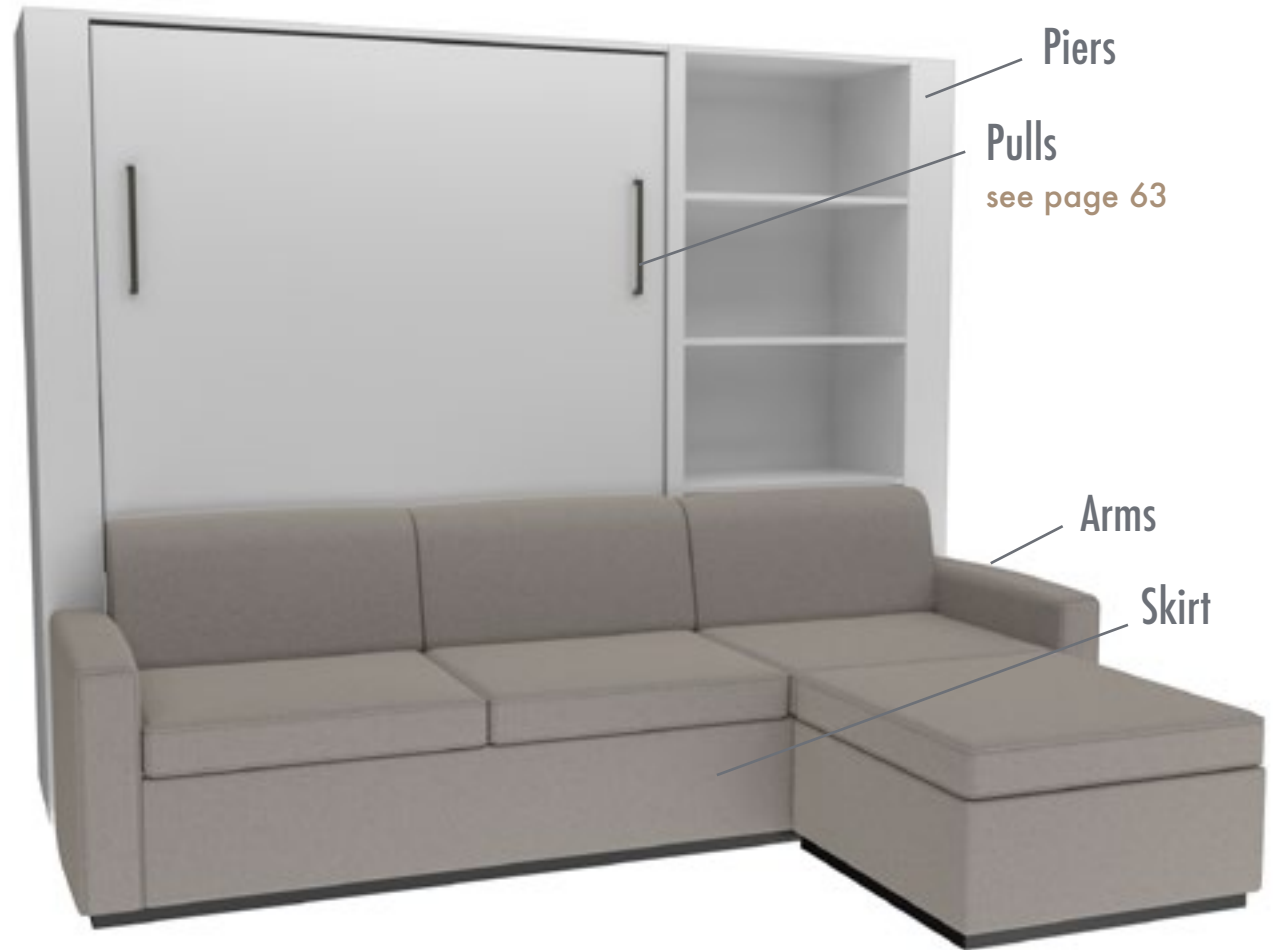
Full
Queen
Hotel King

Bed Cabinet

Finishes - pages 83-85
Pulls - page 80
Crown Cap options - page 75
Piers - page 27
Mattress - up to 11" thick
Electrical - all beds include LED puck lights; on/off switch with dimmer & InovaHub - page 68

Sofa

Cushions: 2 Back & 2 Seat, with welting
Arm Style - page 25
Skirt Style - page 26
Fabric Selection - COM or choose from the variety of fabric options we offer - pages 86-96



Arms

Select style from the options shown to the right.

Dimensions:

5" wide x 32" deep.
Height varies depending on style selected.



High Scooped Arm



23 1/2" high Straight Arm



Rolled Arm



Low Scooped Arm



22" high Straight Arm



Sloped Arm

Skirt Styles

Select style from the options shown on the right.

Dimensions

All skirts are 11 3/4" high, (13 1/4" a.f.f. including recessed 1 1/2" high sofa base).

Plain Skirt

No welting

Unevenly Divided Skirt

Welting runs horizontally and is located 1/3 from top

Evenly Divided Skirt

Welting runs horizontally and is located in the center of the skirt.



Plain Skirt



Evenly Divided



Unevenly Divided

Pier Styles

Select style from the options shown on the right.

Dimensions:

6 1/4" wide x height of the bed cabinet.

Flat Pier

Plain front

Recessed Pier

Includes two 3/4" thick panels on each side and the front face is recessed 1/2".

Open Pier

Includes two 3/4" thick panels on each side, interior is open and includes 3/4" fixed shelves.

Options

Electrical options are available on the front face and sides of piers - page 100.



Flat Pier



Recessed Pier



Open Pier

TableBed

Vertical multi-functional bed featuring both a bed and a generous table/desk.

- Free-standing unit, eliminating need to attach to the floor or wall
- Passes reliability testing of 15,000 bed raising and lowering cycles
- Accommodates 11" thick standard pillowtop mattress
- Various finish and style options available for bed and table top



Creates a space to
eat, work, play, and sleep
all within the same
compact footprint.

How it works



Bed Up/Table Position

The bed is easy to pull down from the cabinet. A spring loaded mechanism is located in the foot rest, which balances the bed during transition. Simply place hand on a pull and begin to open.



Transition

As the bed is lowered, both the table and supporting table leg automatically fold underneath. No additional steps required! The spring loaded mechanism intentionally hovers at 45 degrees for safety.



Bed Position

The bed is fully supported by the foot rest and does not require mounting to the wall and or to the floor. The mattress, including the bedding, is held in place by gravity. No strapping needed.



Styling

Standard TableBeds offer a the following styling options

Size

Full

Queen

Hotel King

Bed Cabinet

Finishes - pages 83-85

Pulls - page 80

Crown Cap options - page 75

Mattress - up to 11" thick

Electrical - all beds include LED puck lights; on/off switch with dimmer & InovaHub - page 68

Table

Table top options: page 33

Foot rest: Powder coat options: page 82



Table Top

Select from the options shown to the right.

Dimensions:

Full: 36 1/4" x 49 3/8" long

Queen: 40 1/4" x 54 3/8" long

Hotel King: 46 1/4" x 54 3/8" long

Overall height 29" a.f.f.

TableTop edge is 3mm for durability.



Square Corners



Round Corners

WallBed

Vertical murphy bed offering the combined luxury of wide, open space during the day and an uncompromisingly comfortable bed at night.

- Requires attachment to wall at top of cabinet with small brackets
- No attachment to floor needed
- Passes reliability testing of 15,000 bed raising and lowering cycles
- Accommodates 12 1/2" thick standard pillowtop mattress
- Various finish and style options available for bed



The WallBed:

A
blank
canvas
ready
to be
designed.



How it works



Bed Up Position

The WallBed is light to the touch. Located in the interior of the bed cabinet are spring-loaded mechanisms which control the amount of tension during transition. Simply place hand on a pull and open.



Transition

As the bed is lowered, place hand on the flip-over leg and swing it to the down position. Like all InovaBeds, the mechanism is spring loaded and intentionally hovers for safety purposes.



Bed Down Position

Once the leg has been flipped over, set leg down until the bed platform is horizontal to the floor. The WallBed is fully supported by attachment to the wall and the flip-over leg. The mattress, including the bedding, is held in place by gravity. No strapping needed.

Styling

Standard WallBeds offer a the following styling options

Size

Full

Queen

Hotel King

Bed Cabinet

Finishes - pages 83-85

Pulls - page 80

Crown Cap options - page 75

Mattress - up to 12 1/2" thick

Electrical - all beds include LED puck lights; on/off switch with dimmer & InovaHub - page 68

Optional

Front bed panels - pages 75- 77

Flip-over leg: Powdercoat options - page 82



Pulls
see page 63



Flip-SofaBed

Horizontal multi-functional bed featuring both a Bed and a Sofa

- Mounts to wall with brackets; no leg support needed
- Includes a modified twin size mattress: 32" wide x 75" long x 7" thick
- Seat cushions are reversible
- Various finish options available for both the bed cabinet and sofa



Designed and styled
for dual-purpose;
A sofa by day and
a flip-down bed as
needed.

How it works



Bed Up/Sofa Position

Our patented EasyMotion feature eliminates the need to remove and store sofa cushions. Simply place hand on a pull and open.



Transition

As the bed is lowered, the seat and back of the sofa automatically pivot and tuck under the structure as it transforms from sofa to bed. The mechanism is spring loaded and intentionally hovers at a 45 degree angle for safety purposes.



Bed Position

The bed is fully supported by the sofa frame and does not require additional legs or mounting to the wall or floor. The mattress, including the bedding, is held in place by gravity. No strapping needed.



Flip-Table Bed

Horizontal multi-functional bed featuring both a bed and a generous table/desk.

- Mounts to wall with brackets; no leg support needed
- Includes a modified twin size mattress: 32" wide x 75" Long x 7" thick
- Various finish options available for bed and table top



Designed and styled
for dual-purpose;
A desk by day that
flips down to a bed
when needed.

How it works



Bed Up/Table Position

The bed is easy to pull down from the cabinet. Simply place hand on a pull and begin to open.



Transition

As the bed is lowered, both the table and supporting table leg automatically fold underneath. No additional steps required! The spring loaded mechanism intentionally hovers at 45 degrees for safety.



Bed Position

The bed requires mounting to the wall via brackets. The mattress, including the bedding, is held in place by gravity. No strapping needed.



Flip-WallBed

Horizontal murphy bed offering the combined luxury of wide, open space during the day and an uncompromisingly comfortable bed at night.

- Mounts to wall with brackets; no leg support needed
- Includes a modified twin size mattress: 32" wide x 75" Long x 7" thick
- Various finish options available for bed and table top



The Flip-WallBed:

A hidden bed, designed to
blend in a room and be
revealed when needed.

How it works



Bed Up Position

The Flip-WallBed is light to the touch. Located in the interior of the bed cabinet are spring-loaded mechanisms which control the amount of tension during transition. Simply place hand on a pull and open.



Transition

The spring loaded mechanism intentionally hovers at 45 degrees for safety.



Bed Down Position

The Flip-WallBed is fully supported by attachment to the wall. The mattress, including the bedding, is held in place by gravity. No strapping needed.



WorkCube & WorkCube mini

Expands from a compact cabinet into a wide work surface, including a pull-out tray and drawer

- Mobile for flexibility and easy transport
- Extremely stable; tip proof
- Backside is finished, no visible hardware
- Available in multiple finishes and hardware
- Ships fully assembled



WorkCube



A mobile, pop-up desk that opens with ease!
Starting as a compact cabinet, it quickly expands
into multiple work surfaces, depending on your needs.

Comfortably accommodates one or two people.
And it can be stored away in minutes!

WorkCube mini

A shorter and less deep version of the WorkCube; intended to be used when sitting on a sofa for work and play. When done, simply pack it up and move out of the way.

The WorkCube mini is a great accessory for our Sofa-WallBed and can double as a nightstand. In addition, given it's size, it can easily be used as a pop-up desk for children, accommodating two comfortably!





How it works



Closed, Cabinet Position

When closed, both the WorkCube and WorkCube **mini** are compact and easy to move around.



Partially Open

To open a side: use one hand to simply lift the side upward. With your other hand, swing the support leg outward, until it is fully extended. Lower the side surface down onto the support leg.

Each side is stable and does not require both sides to be open.



Fully Open

Lift and set both sides to fully open. Both WorkCubes are equipped with casters that make them mobile whether closed, partially open, or fully open.

WorkCube **mini** expands to 68.5"
WorkCube expands to 77.5"



Pull-Out Surface & Storage

Located at the top of the cabinet is a pull-out tray. Also included are a closed drawer and an open cubby.



Side-By-Side Comparison WorkCube mini & WorkCube

WorkCube mini

21" wide and expandable to 68.5" wide overall;
26.5" tall & 18.5" deep!

WorkCube

23" wide and expandable to 77.5" wide overall;
30" tall & 20" deep!

Finishes: page 83-85

Pull options: page 80

Cabinetry & Nightstands

Inova Cabinetry and Nightstands paired with InovaBeds create a cohesive, functional and attractive compact space.

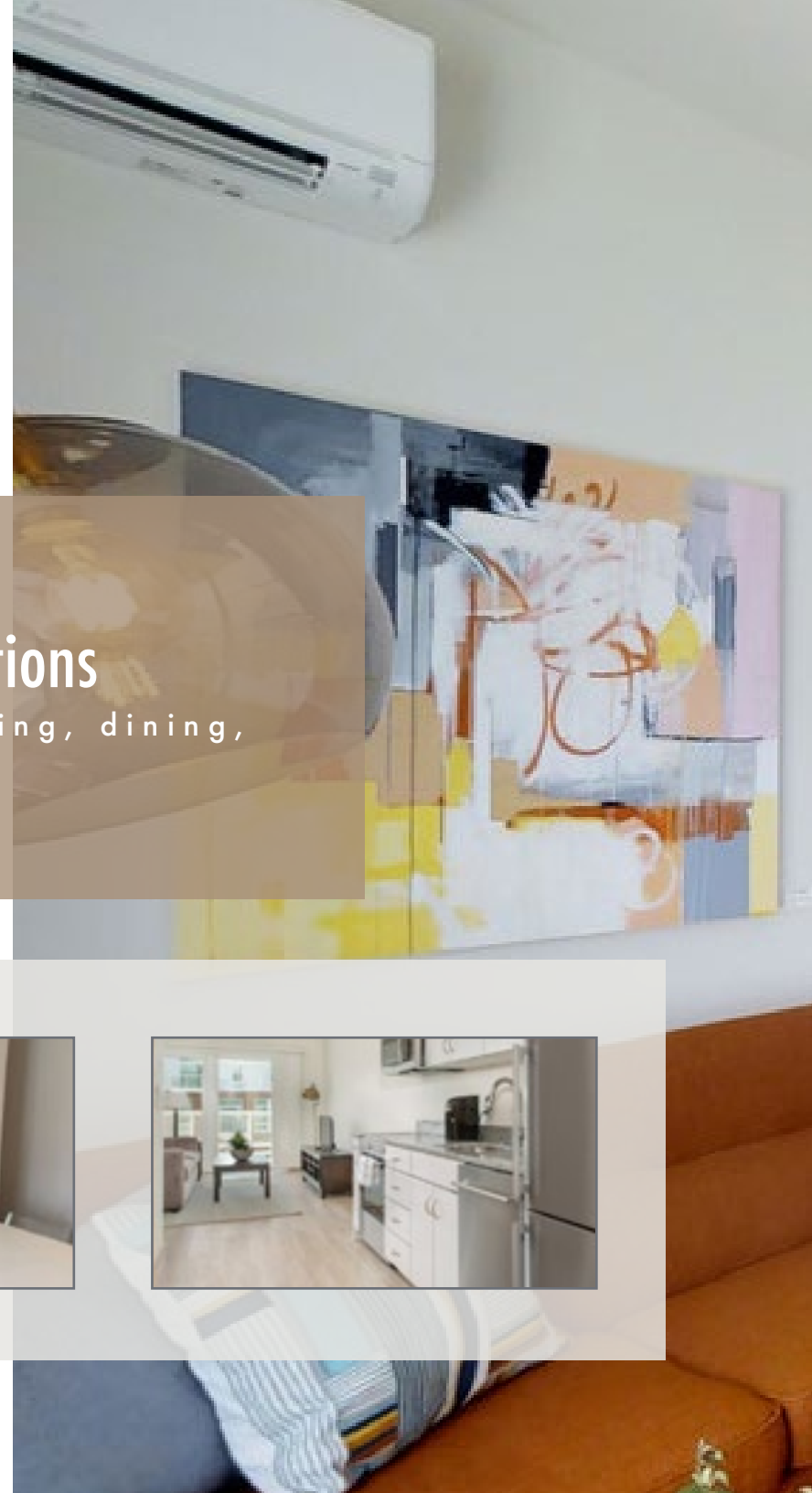
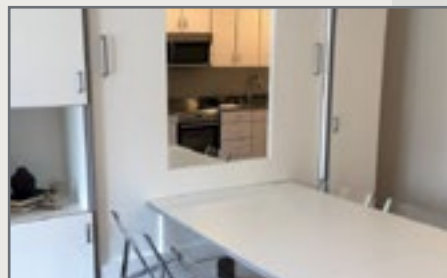
- Thoughtful design allows for maximum storage in minimal space
- All cabinets and nightstands are available in various finishes and hardware
- High quality engineering and construction. Designed and built in the U.S.A.
- Electrical and top options available



A place for everything
and
everything in its place

Coordinated Solutions

For living, working, cooking, dining,
and sleeping







Kitchen Cabinets & Vanities

One-stop shopping.
Guarantees matching finishes throughout the units.
Customizable dimensions, materials, and hardware to fit any style.
High quality engineering and construction.
Designed and built in the U.S.A.



Kitchen Cabinetry

- Pantries
- Kitchen Islands
- Pull-Out Cabinets with Organizers
- Utility Closets

Bathroom Vanities



Storage Cabinetry

Nightstands

Standard Inova Nightstands

Width

Standard: 18"

Recessed Base: 24"

Depth

Cabinet depth matches bed depth

for WallBeds: 22"

for Sofa-WallBeds: 20"

for TableBeds: 20"

Height

Base height: 2 3/8"

Overall height: 23-1/4"

Pulls

See page 80 for pull options

Electrical

See page 117 for top options

Standard



NS-1D-18



NS-2D-18



NS-3N1-18



NS-D1TR-18

Recessed Base



NS-1DRB-24



NS-2DOSRB-24



NS-3N1RB-24



NS-D1TR-24



Nightstands with Backers



NS-FB-18



NS-FB-24

Cabinetry

Standard Inova Cabinetry

Width

Available in 18", 24, and 30" widths (unless noted)

Depth

Cabinet depth matches bed depth

WallBed depth = 22"

Sofa-WallBed = 20"

TableBed = 20"

Height

Base height: 2 3/8"

Cabinet height matches bed

Full Size: 80"

Queen & Hotel King: 85"

Pulls

See page 80 for pull options

Electrical

See page 112 for options



W-2DOS Series

Wardrobe with 2 drawers and open closet



C-2DOS Series

Cabinet with 2 drawers and open shelves



BC-OS Series

Open shelf bookcases with adjustable shelves



BC-VD-30*

Bookcase with fixed shelves and vertical dividers
*Only available in 30" wide



W-3D Series
Wardrobe with 3 drawers and closed closet



W-3N1 Series
Wardrobe with 3 drawers, open cubby and closed closet

Electrical

The following are standard on all InovaBeds:

LED Lighting

- 2 recessed LED lights 3000K color
- On/Off/Dimmer switch (plug-in)
- Available in black or white

InovaHub

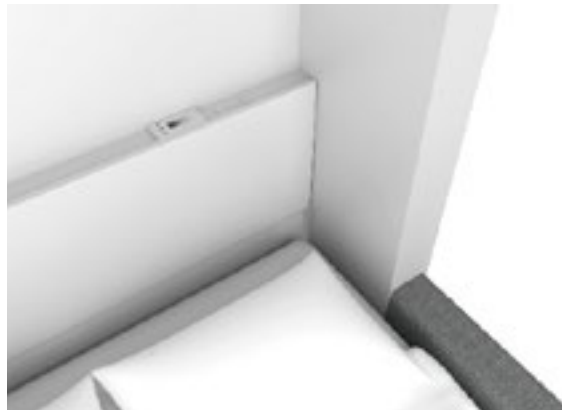
- Dual power outlet & dual USB
- 13 ft. flat plug cord
- Available in black or white

All lighting and electrical components are UL, ULC, or ETL rated. Design and assembly of the lighting follows UL, ULC and NEC standards.



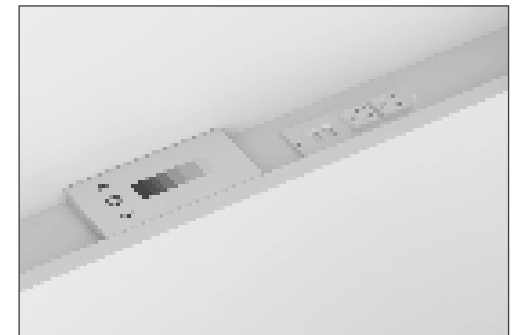
LED Lighting

Location: Built into the cabinet top for use when the bed is down



InovaHub & On/Off/Dimmer

Location: Mounted right side facing on the shelf above the headboard



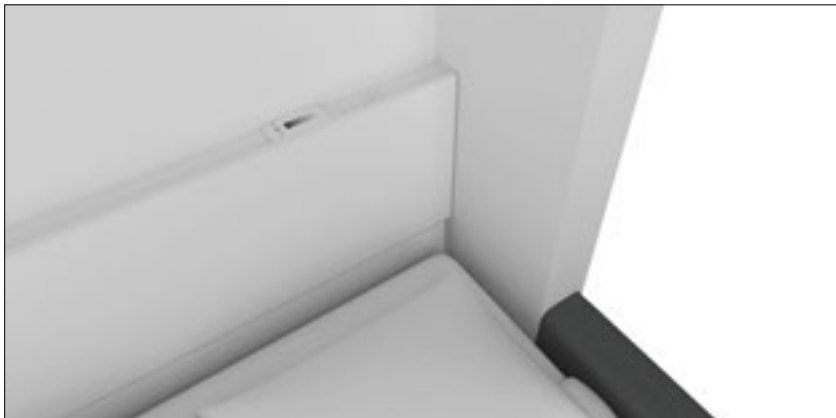
Enlarged Image

Easy Access Behind the Bed

All InovaBeds include a sliding headboard to allow access behind the bed as needed.

When the bed is in transition, the headboard slides up or down (depending on the direction) and creates a gap between the shelf and top of the headboard.

At this point, simply reach your hand behind the headboard and locate the cable. Pull the cable upward and position the headboard on the mattress. Once the headboard is resting on the mattress, release the cable. This gives Engineers access behind of the bed.



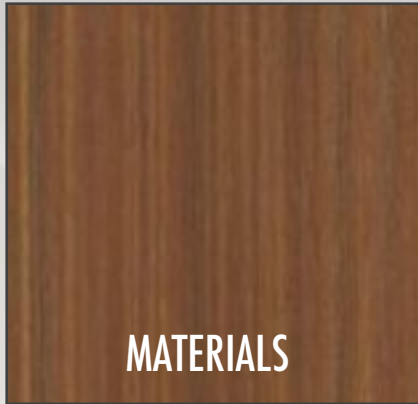
Headboard, closed position



Headboard, down position for temporary access



**GREEN
INITIATIVES**



MATERIALS

- All core materials used to manufacture our InovaBeds meets the requirements for CARB Phase II Formaldehyde Emissions.
- Our Laminate Series is made from 100% recovered and recycled wood materials. Up to 5 LEED credits available - see page 66.
- Inova pre-selected fabrics, sourced from Mayer Fabrics, are GREENGUARD Certified, see pages 72-83.



RE-THINK WASTE

- During manufacturing, we re-purpose our fall-off material as utility parts, which are not seen on our product and drastically reduces waste.
- We donate our pallets for re-use.
- LED Lighting has been installed throughout our 78,000 sf facility.
- All defective and/or unused scrap metal, paper and cardboard is recycled.
- No styrofoam is used in packaging.
- We bulk pack our product, which reduces packaging waste and amount of trucking.

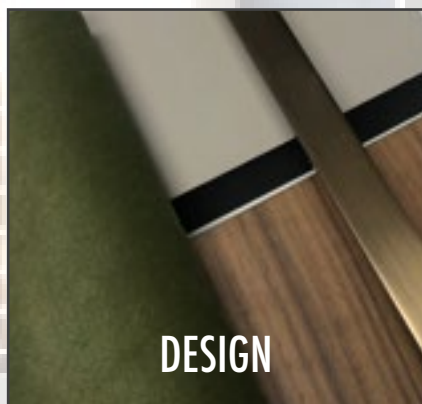


SUPPLY CHAIN

- Our supply chain consists of certified and trusted vendors.
- Many are local, helping reduce the negative environmental impact from shipping.



OUR SERVICES



Let's collaborate!

Tell us your goals, send us your plans, and we'll get to work.

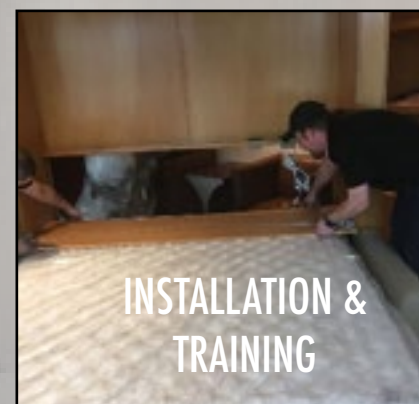
Our design team is available to help with space planning, finish selections, and to provide rendered images so you have a clear vision of what you can expect.



Our goal is to make the overall process easy and seamless, from start to finish.

To help achieve this, each Inova order is assigned a dedicated Project Manager to be your point-of-contact throughout.

Your PM will handle all design approvals, oversee scheduling and production; and arrange shipping and installation.



With all Inova orders, a detailed assembly manual is provided with each product and included in the shipment.

In addition, we offer on-site training as well as complete installation services by our Product Experts.

Once on site, we provide supervision, moving equipment, and all the necessary tools to distribute, unpack, and install the product properly and safely. Upon completion, a brief review is held with the property to assure satisfaction.

Optional Style Selections

The following are available options with our standard product offering.

Crown Cap

Available for all Beds & Sizes

- 3/4" x 4" High
- Spans length of bed and returns depth of bed
- Overhangs 1/4" on front and sides (flush on sides with coordinating cabinetry)
- Available for all finishes



Enlarged Image



WallBed and TableBed

Cabinet sides are 1" thick



Sofa-WallBed

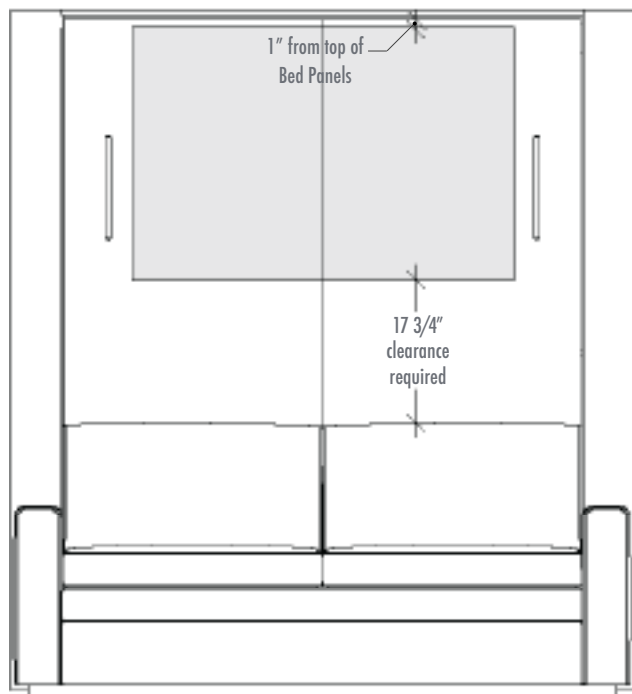
Spans across piers

Available with any pier style

Artwork Parameters

Available for all Beds and all Sizes

- Shaded areas below indicate parameters for mounting
- Parameters below are also applicable for trim molding (excludes TableBed). For molding options, see page 77
- Standard spring tension is based on surface-mounted artwork up to 20 lbs
- Surface-mounted artwork should not be glass-covered for safety and weight reasons
- 1/8" Plexiglass is recommended



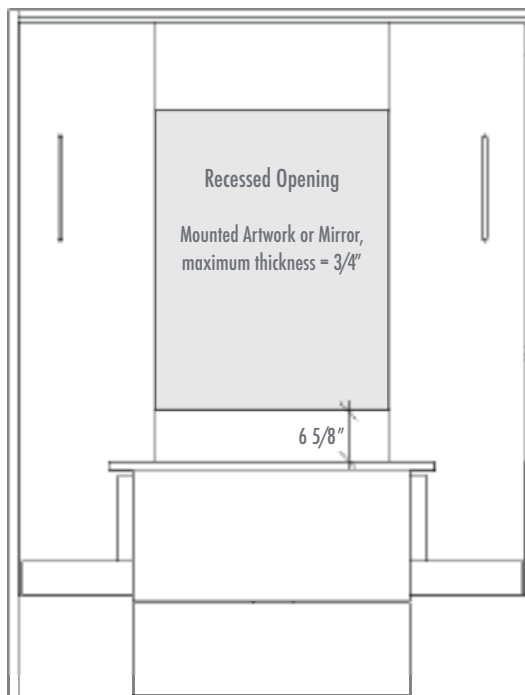
Sofa-WallBed

Sofa-WallBed Parameters

Full 41 1/8" wide x 27" high

Queen 47 1/8" wide x 32" high

Hotel King 59 1/8" wide x 32" high

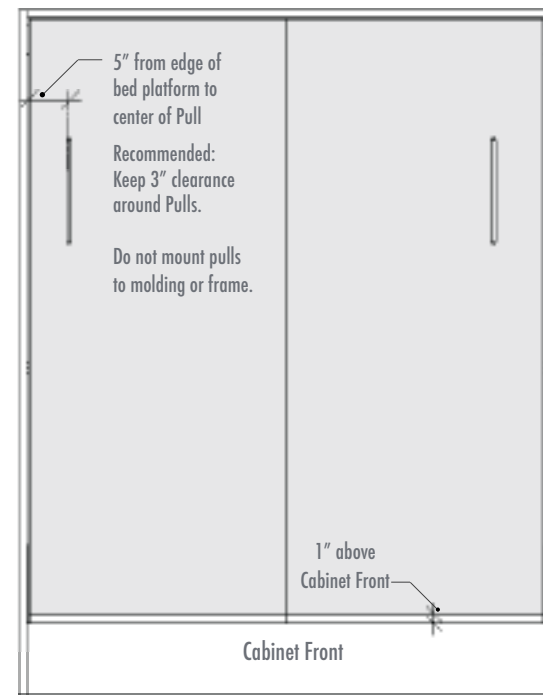


TableBed

TableBed Parameters

Full, Queen, and Hotel King

29" wide x 37" high



WallBed

WallBed Parameters

Full 57 1/8" wide x 69 5/8" high

Queen 63 3/8" wide x 74 5/8" high

Hotel King 75 3/8" wide x 74 5/8" high

Moldings

Available for WallBeds & Sofa-WallBeds, all Sizes;
Excludes TableBeds

- Molding provided in over-sized lengths, supplied by Inova; Installed by others
- See specifications for placement and parameters
- Available for veneer & lacquer finishes only (no laminate)
- Stained or painted to match bed finish
- Not available on front of TableBed due to interference with table top



Contemporary Molding

1 3/8" wide x 3/8" high
Flat profile



Transitional Molding

1 1/8" wide x 11/16" high
Nose and cove profile

Upholstered Headboard

Available for all Beds and all Sizes

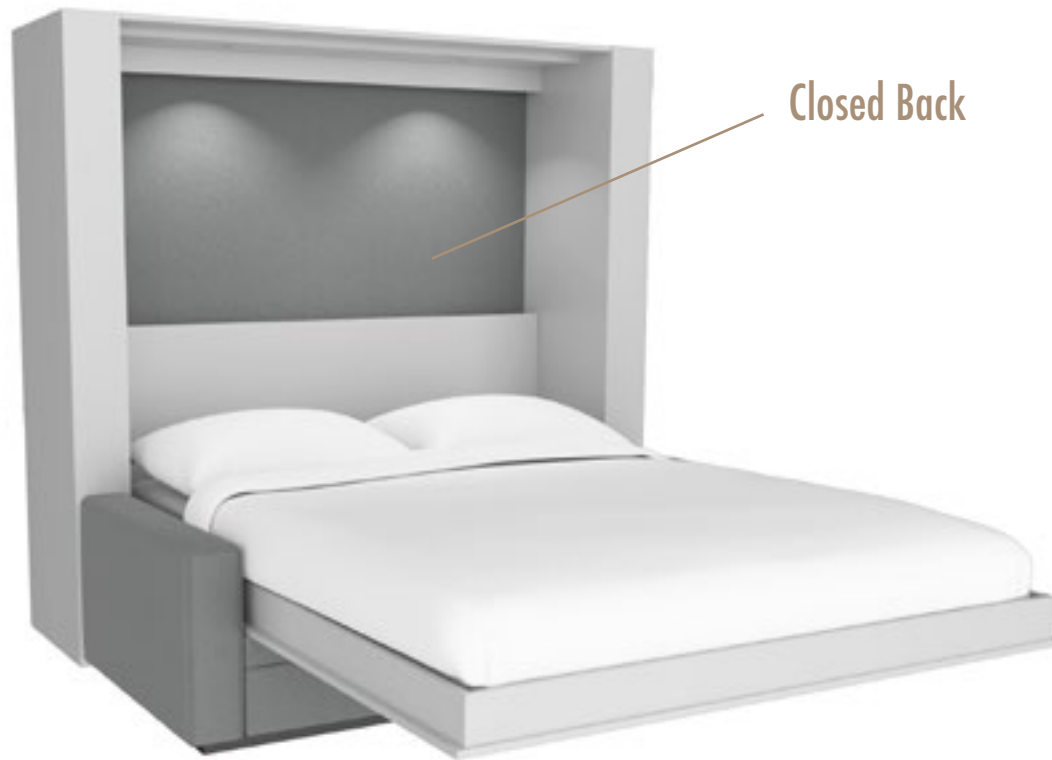
- Fabric wrapped around 1/2" foam and backer
- COM fabric or choose from Inova pre-selected fabric - see pages 86 - 96
- Yards required per Bed Size:
 - Full: 2 yards
 - Queen: 2 yards
 - Hotel King: 2.5 yards



Upholstered Closed Back

Available for all beds and all sizes

- Fabric wrapped around 1" foam and backer
- COM fabric or choose from Inova pre-selected fabric - see pages 86 - 96
- Yards required per Bed Size:
 - Full: 2 yards
 - Queen: 2 yards
 - Hotel King: 2.5 yards



Pulls and Finishes

The follow are available options with our standard product offering.

Pulls

Large pulls to be used for bed; Small pulls for cabinetry
 Altitude and Arch (Brushed Chrome finish) included in standard pricing;
 Bar, Classic, and Gatsby available at additional cost.
 c.c. = center to center dimension, typ.



Altitude

Large: 8" long, 7.56" c.c.
 Small: 4" long, 3.78" c.c.

Brushed Nickel | Verona Bronze



Arch

Large: 8" long, 7.56" c.c.
 Small: 4" long, 3.78" c.c.

Brushed Chrome



Bar

Large: 15.75" long, 13" c.c.
 Small: 5.3" long, 3.78" c.c.
 Silver powder coat



Classic

Large: 13.4" long, 12" c.c.
 Small: 4.8" long, 3.78" c.c.

Brushed Nickel | Black | Verona Bronze



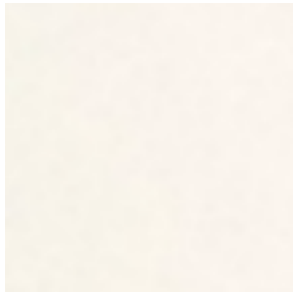
Gatsby

Large: 13" long, 12.6" c.c.
 Small: 5.5" long, 5.04" c.c.

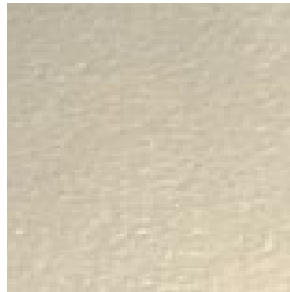
Modern Bronze | Black | Brushed Nickel | Polished Chrome

Powder Coat Colors

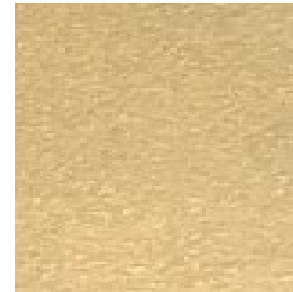
Pulls, Flip-Over Leg (WallBed) and FootRest can be powder coated for an additional cost.



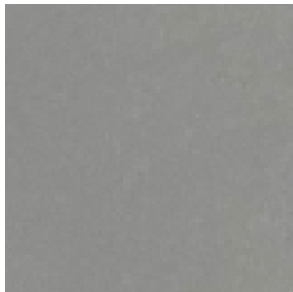
White



Satin Nickel



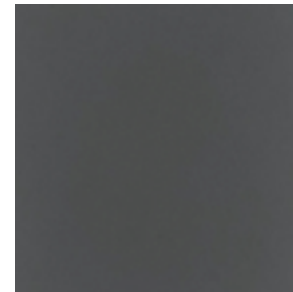
Golden Bronze



Silver



Bronze



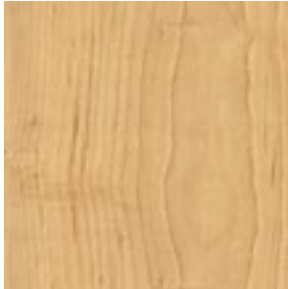
Black

Veneer Finishes

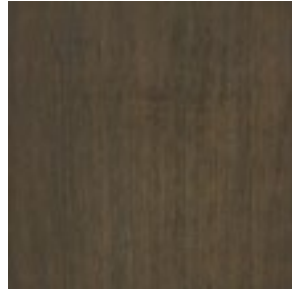
Custom veneer species, cuts and color matching is also available.

Tier I

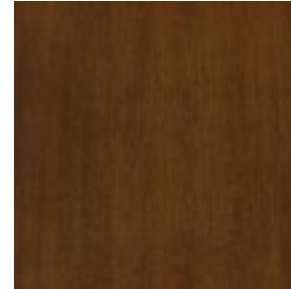
Maple,
Plain-Sliced



Clear Coat
Maple



Zen Gray



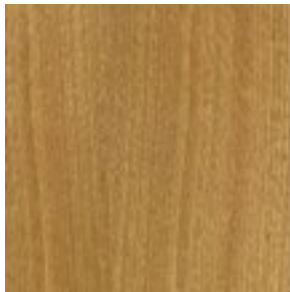
Pecan
Maple



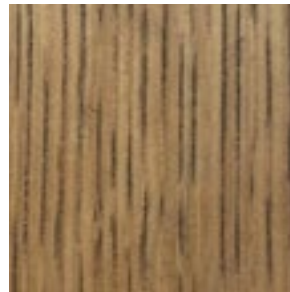
New
Espresso

Tier II

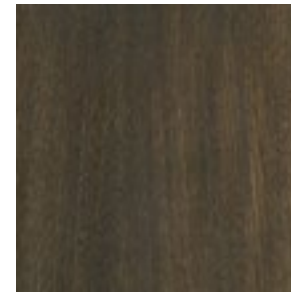
White Oak,
Quartered Cut



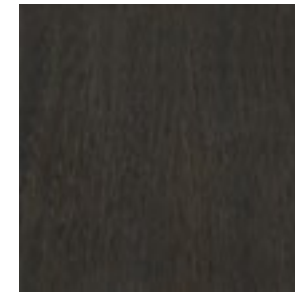
Clear Coat
Oak



MalTED
Oak



Tarragon
Gray



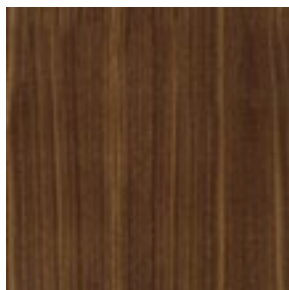
Brooklyn
Brown



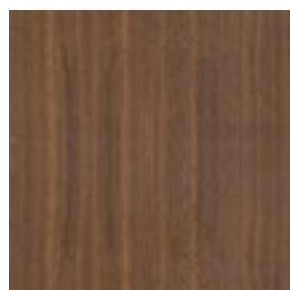
Ebony

Tier III

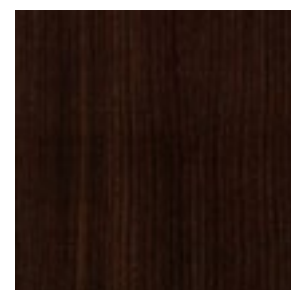
Walnut,
Quartered Cut



Clear Coat
Walnut



Toffee



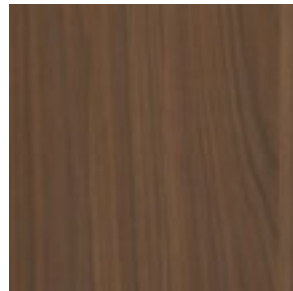
Dark
Chocolate

Laminate Finishes

Tier I



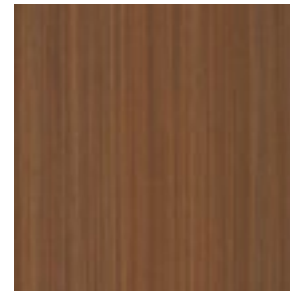
White
Chocolate



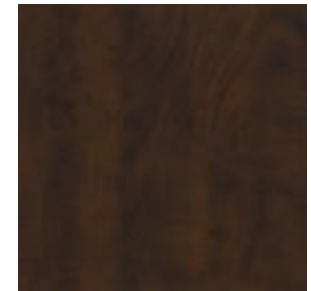
Hot
Cinnamon



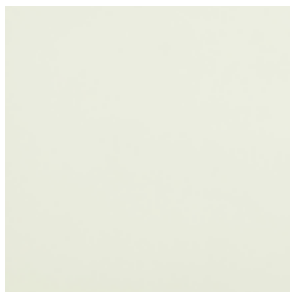
Spring
Blossom



Winter
Cherry



Chocolate
Pear Tree



White
L080



Black

Inova's laminate series is made from Tafisa Tafipan core. Tafisa® Canada's decorative panels (TFL) are manufactured using 100% recovered and recycled wood materials, meticulously selected to create panels of consistently high quality for furniture, millwork, cabinetry and countertops. For more information, visit inovabed.com/sustainability

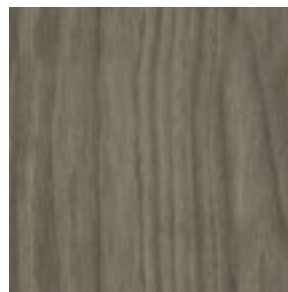
Tier II



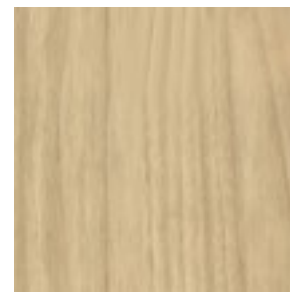
Winter
Fun



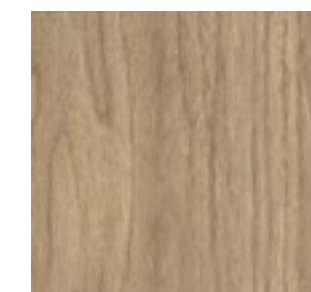
Weekend
Getaway



Sunset
Cruise



Casting At
First Light



Apres-Ski

Lacquer Finishes

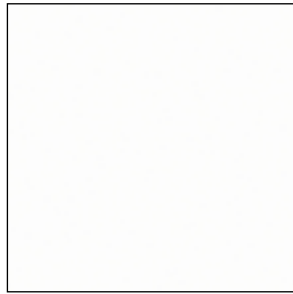
| 85

Standard: solid color finish (no grain)

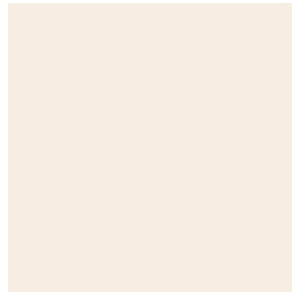
Sheen: matte.

Optional: lacquer with wood grain appearance available and other sheen finishes.

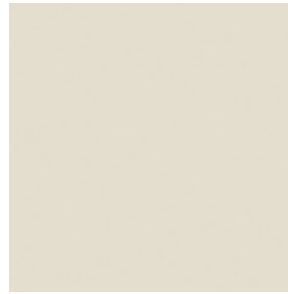
Additional cost may apply.



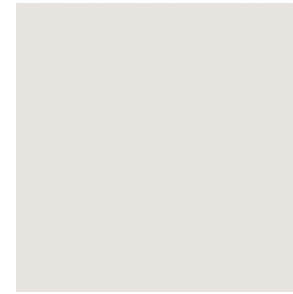
Designer
White



Linen White



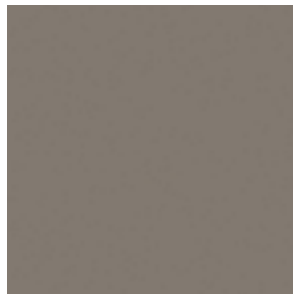
Antique
White



Mirage
Gray



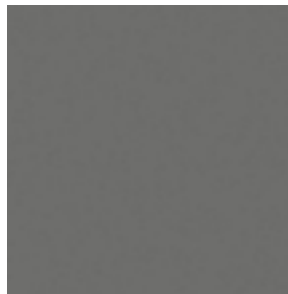
Gossamer



Woodwitch



Timeless
Gray



Steel
Wool



African
Night

Pre-Selected Fabrics

When selecting fabrics, we considered the following:

■ Durability

All pre-selected fabrics exceed the recommended double-rubs for commercial use; tightly woven patterns were also chosen for woven textiles.

- Fabric ratings are decided by how many double rubs a piece of fabric could take in the lab before showing signs of wear.
- A double rub is basically the back and forth rubbing motion that one would usually apply when washing the fabric. It determines how the material reacts to friction and how long it will last before the material is worn down.
- Extra heavy duty - Over 30,000 double rubs.

■ Sustainability

All pre-selected fabrics are GREENGUARD Certified. GREENGUARD Certified products are tested for low chemical emissions to standard UL 2818 and may contribute to LEED certification.

The following quantities are required per sofa:

Full: 12 yards

Queen: 12 yards

Hotel King: 14 yards

■ Cleanability

All pre-selected fabrics are easy to clean and do not require any heavy-duty chemicals.

■ Stain Repellent

All pre-selected fabrics have a stain repellent finish applied at the surface or incorporated into the fibers.

■ "Pet Friendly"

All pre-selected fabrics were chosen with pets in mind! Our fabrics with Crypton or Sunbrella offer the most protection.

For more information, visit
inovabed.com/fabric

Fedora Series Grade I

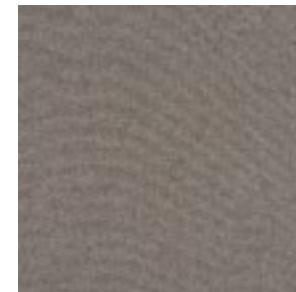


Enlarged Image, Fedora Midnight

Versatile polyster, reminiscent of a plush woolen felt.
Passes 100,000 double rubs.
25 colors available



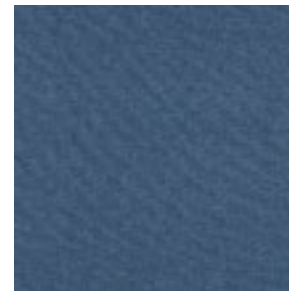
Fedora
Dapper



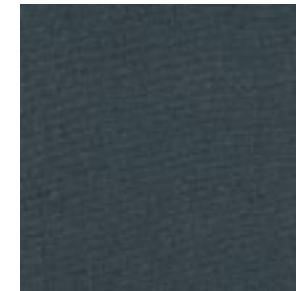
Fedora
Pewter



Fedora
Opal



Fedora
Indigo



Fedora
Midnight



Fedora
Persimmon

Sydney Series Grade I

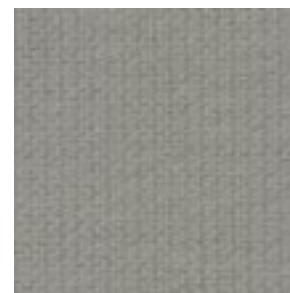


Enlarged Image, Sydney Taupe

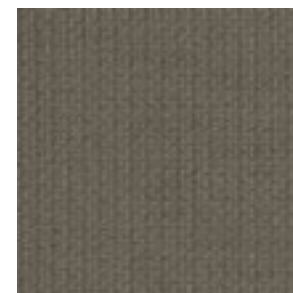
Woven textile with chenille- like textural elements.
Passes 100,000 double rubs.
12 colors available



Sydney
Oatmeal



Sydney
Silver



Sydney
Taupe



Sydney
Crimson



Sydney
Ocean



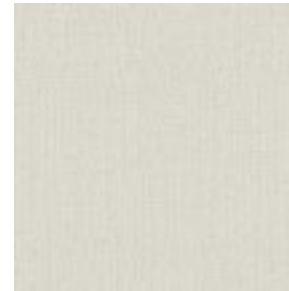
Sydney
Mulberry

Continuum Series Grade I



Enlarged Image, Continuum Iron

Woven textile with a natural linen look
Passes 130,000 double rubs.
25 colors available



Continuum
Almond



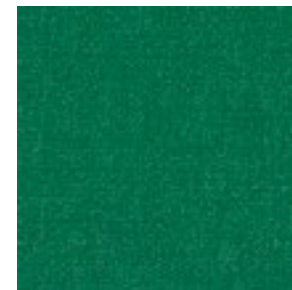
Continuum
Iron



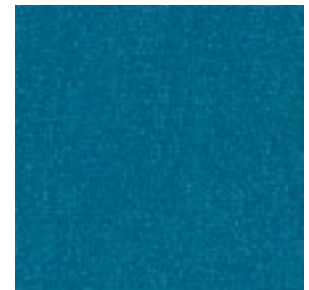
Continuum
Stone



Continuum
Espresso



Continuum
Bottle



Continuum
Caribbean

Havana Series Grade II

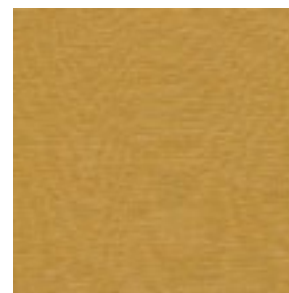


Enlarged Image, Havana Silver

Tightly constructed textural quality with natural slubbing.
Exceeds 100,000 double rubs
18 colors available



Havana
Metal



Havana
Saffron



Havana
Sea



Havana
Silver



Havana
Sky



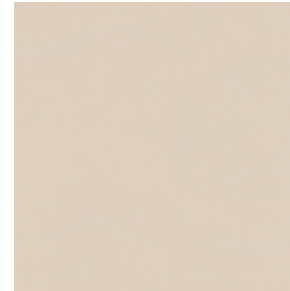
Havana
Spring

Caressa Series Grade II

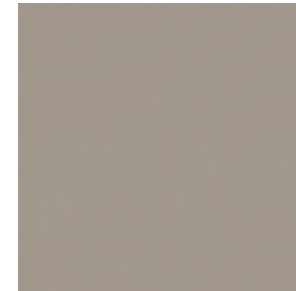


Enlarged Image, Caressa Bluestone

Faux Leather, 100% Vinyl
Passes 650,000 double rubs
73 colors available
Anti-microbial and anti-bacterial
Ink and stain resistant protection



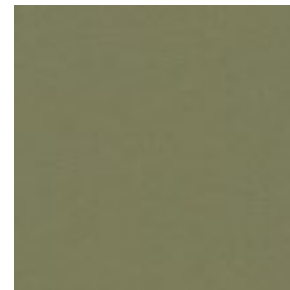
Caressa
Bone



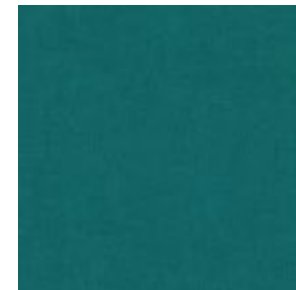
Caressa
Dove



Caressa
Bluestone



Caressa
Laurel



Caressa
Bluegrass



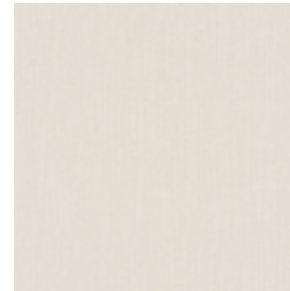
Caressa
Aubergine

Abbey Series Grade III



Enlarged Image, Abbey Iron

Woven Crypton® with Antimicrobial Silver Ion Technology.
Exceeds 100,000 double rubs
13 colors available



Abbey
Oatmeal



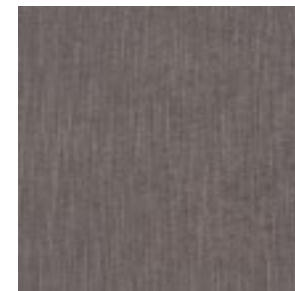
Abbey
Sea



Abbey
Plum



Abbey
Metal



Abbey
Iron



Abbey
Midnight

Kensington Series Grade III



Enlarged Image, Kensington Caramel

Woven Crypton® .
All-over chenille check design and is reminiscent of tweed.
Passes 130,000 double rubs
7 colors available



Kensington
Almond



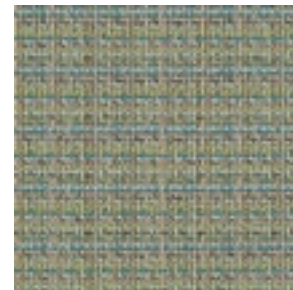
Kensington
BoysenBerry



Kensington
Chili



Kensington
Ink



Kensington
Jungle



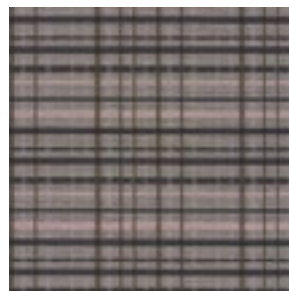
Kensington
Stone

Tattersall Series Grade IV

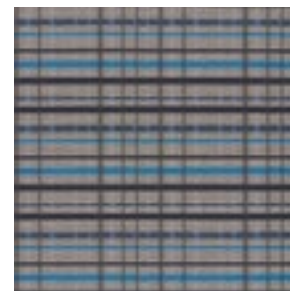


Enlarged Image, Tattersall Stone

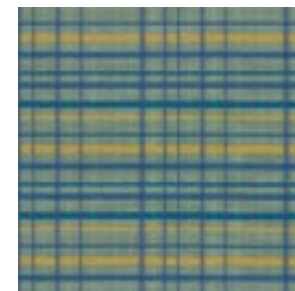
Woven Crypton®, Updated interpretation of the Tattersall style plaid.
Crypton Green finish (high performance upholstery with recycled content fiber and all the performance characteristics of Crypton® Super Fabrics.)
with Antimicrobial Silver Ion Technology.
10 colors available



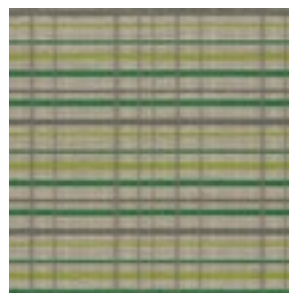
Tattersall
Blush



Tattersall
Cobalt



Tattersall
Mallard



Tattersall
Meadow



Tattersall
Spice



Tattersall
Stone

Acuco Series Grade V



Enlarged Image, Acuco Zebra

Sunbrella® fabric;
fine crosshatching pattern similar to hand painted pottery
19 colors available



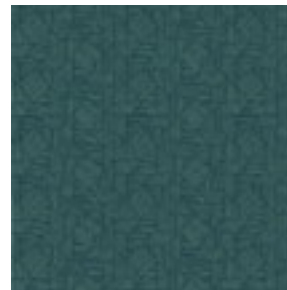
Acuco
Almond



Acuco
Cobalt



Acuco
Coral



Acuco
Peacock



Acuco
Raisin



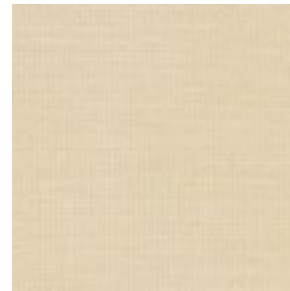
Acuco
Zebra

Soleil Series Grade V



Enlarged Image, Soleil Cerulean

Sunbrella® fabric of substantial weight yet has a supple hand making it a unique fabric for indoor or outdoor use.
19 colors available



Soleil
Linen



Soleil
Charcoal



Soleil
Coral



Soleil
Onyx



Soleil
Turquoise



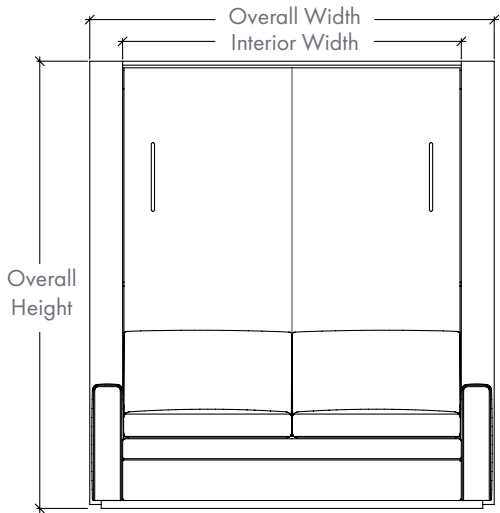
Soleil
Cerulean



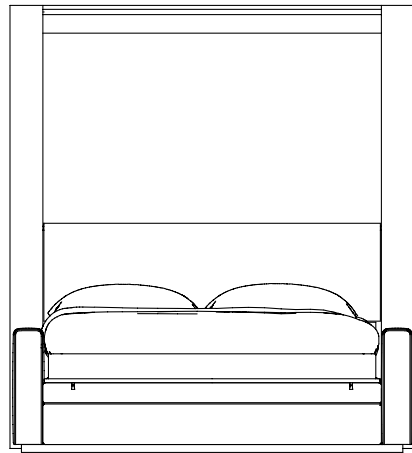
Specifications

Sofa-Wall Bed

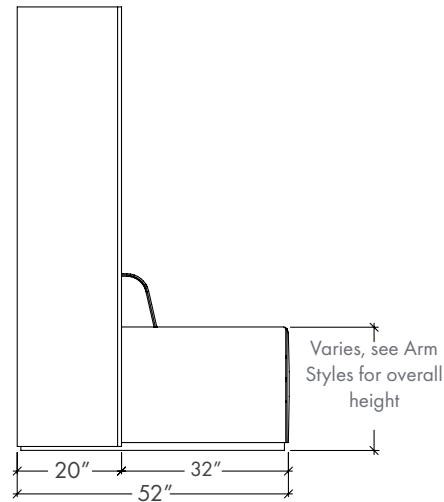
Specification Sheet



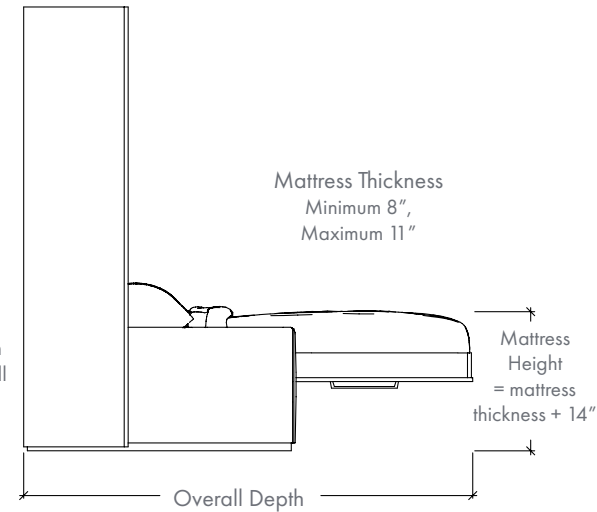
Front View, Sofa Position
Bed Up



Front View, Bed Position
Bed Down



Side View, Sofa Position
Bed Up



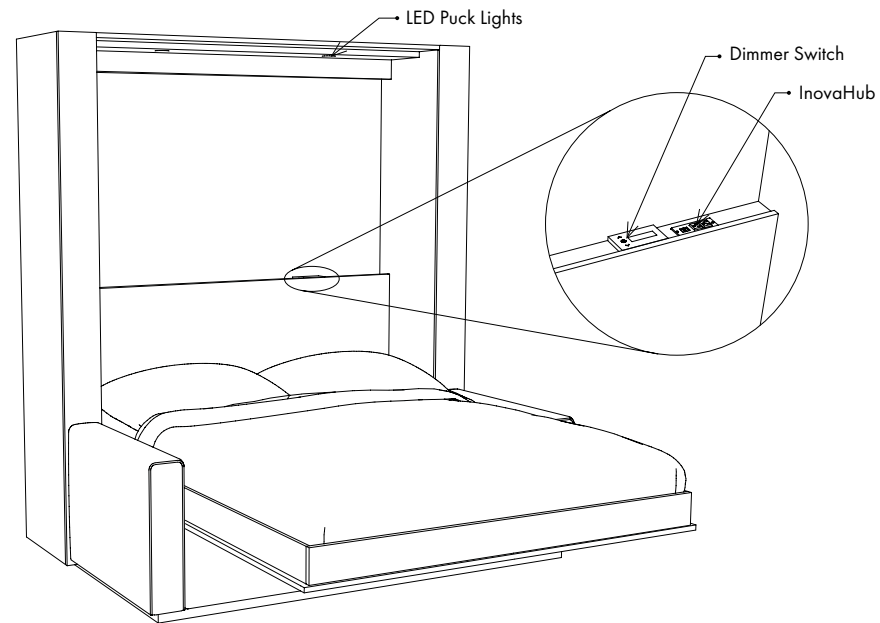
Side View, Bed Position
Bed Down

Specifications

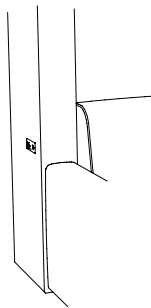
Select Size	Overall Width	Overall Height	Interior Width	Overall Depth, Bed Position	Mattress Size
■ Full	70-7/8"	80"	58-3/8"	80-5/8"	54" x 75"
■ Queen	76-7/8"	85"	64-3/8"	86"	60" x 80"
■ Hotel King	88-7/8"	85"	76-3/8"	86"	72" x 80"

Sofa-WallBed Electrical

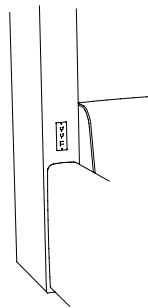
Electrical Configuration Options



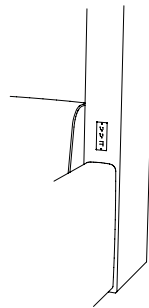
Standard Electrical



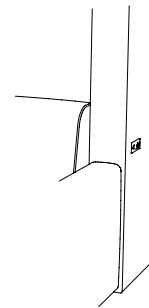
InovaHub Left Side



InovaHub Left Front



InovaHub Right Front

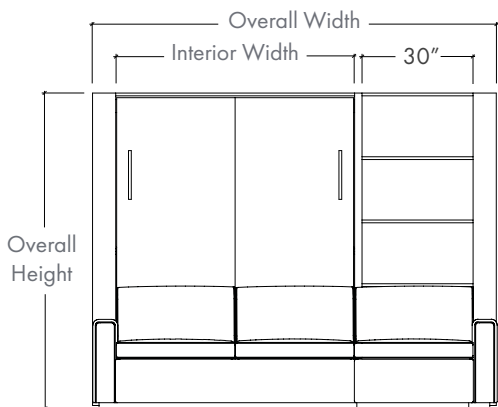


InovaHub Right Side

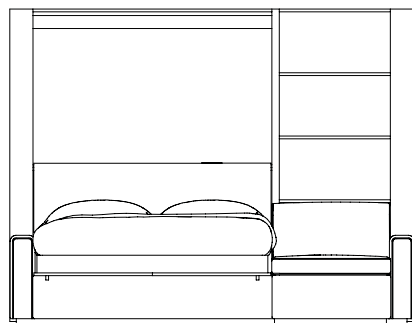
Sofa-WallBed Sectional

Specification Sheet

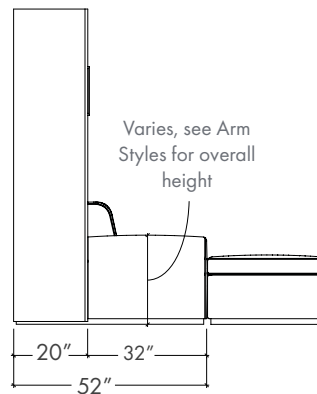
| 101



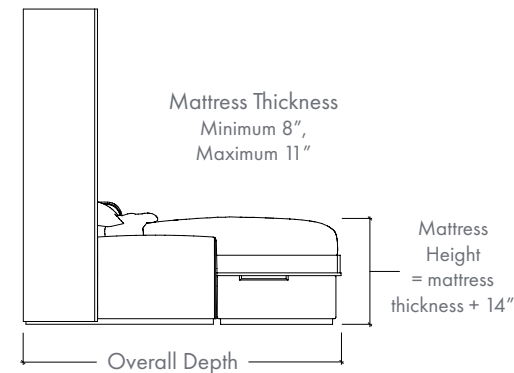
Front View, Sofa Position
Bed Up



Front View, Bed Position
Bed Down



Side View, Sofa Position
Bed Up



Side View, Bed Position
Bed Down

Specifications

Select Size

■ Queen

Overall Width

108-7/8"

Overall Height

85"

Interior Width

64-3/8"

Overall Depth,
Bed Position

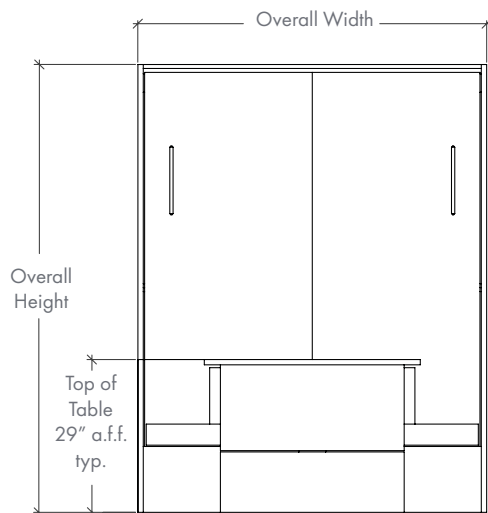
86"

Mattress Size

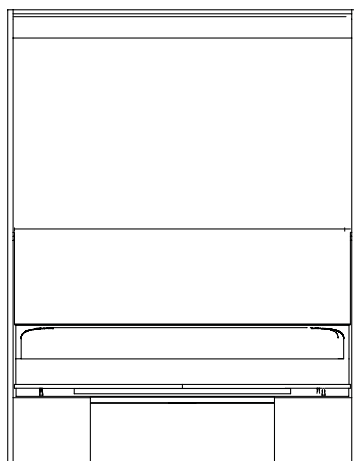
60" x 80"

TableBed

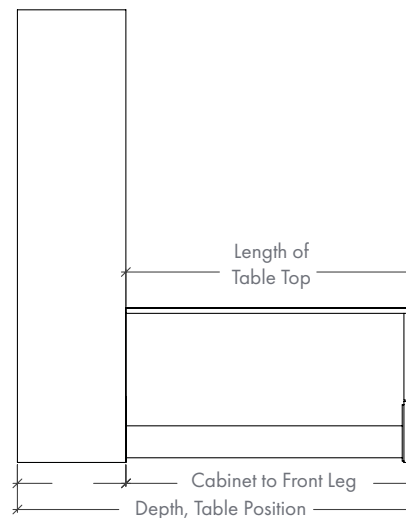
Specification Sheet



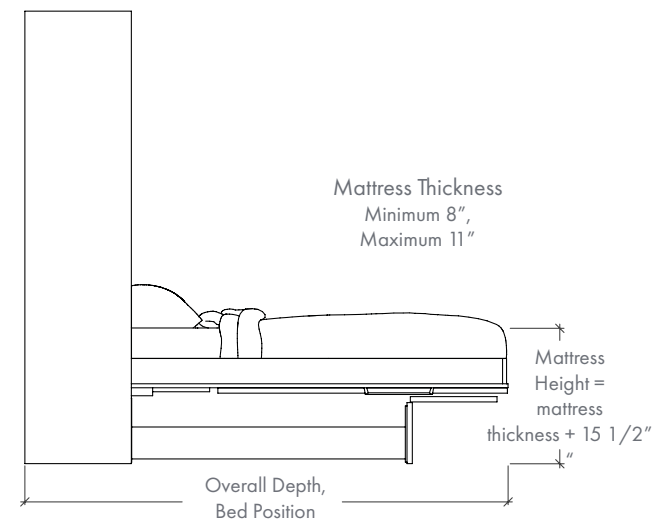
Front View, Table Position
Bed Up



Front View, Bed Position
Bed Down



Side View, Table Position
Bed Up



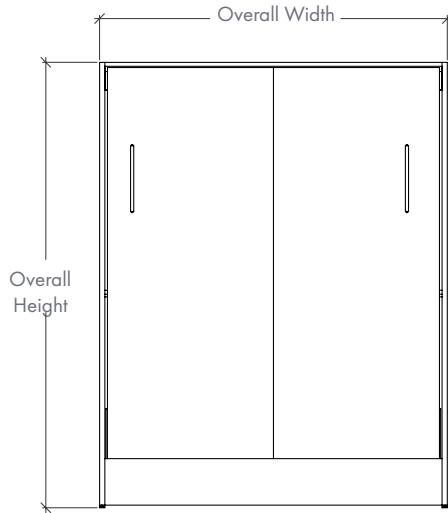
Side View, Bed Position
Bed Down

Specifications

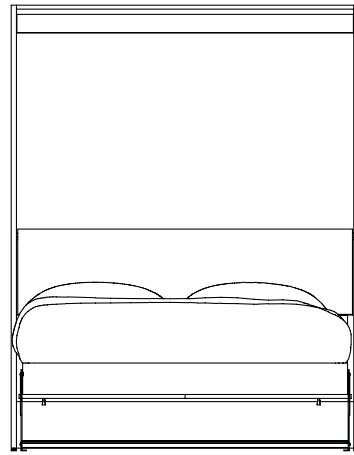
Select Size	Overall Width	Overall Height	Depth, Table Position	Overall Depth, Bed Position	Length of Table Top	Mattress Size
■ Full	59"	80"	68-3/4"	85-3/4"	49-3/8"	54" x 75"
■ Queen	65"	85"	73"	90-3/4"	54-3/8"	60" x 80"
■ Hotel King	77"	85"	73"	90-3/4"	54-7/8"	72" x 80"

WallBed

Specification Sheet



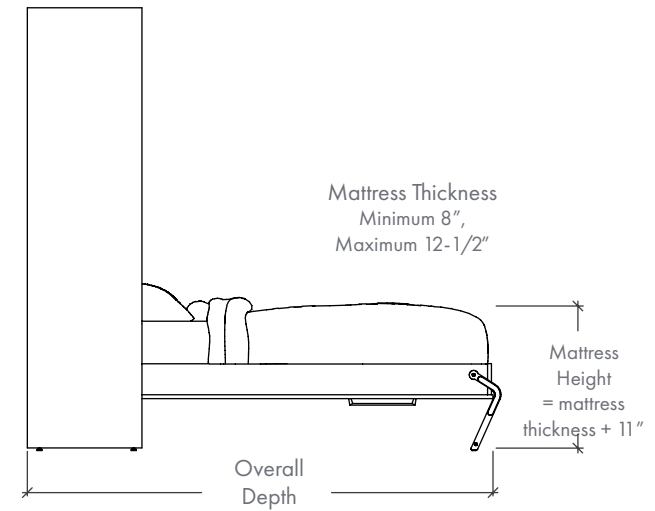
Front View, Cabinet Position
Bed Up



Front View, Bed Position
Bed Down



Side View, Cabinet Position
Bed Up



Side View, Bed Position
Bed Down

Specifications

Select Size

- Full
- Queen
- Hotel King

Overall Width

60-3/8"
66-3/8"
78-3/8"

Overall Height

80"
85"
85"

Overall Depth, Bed Position

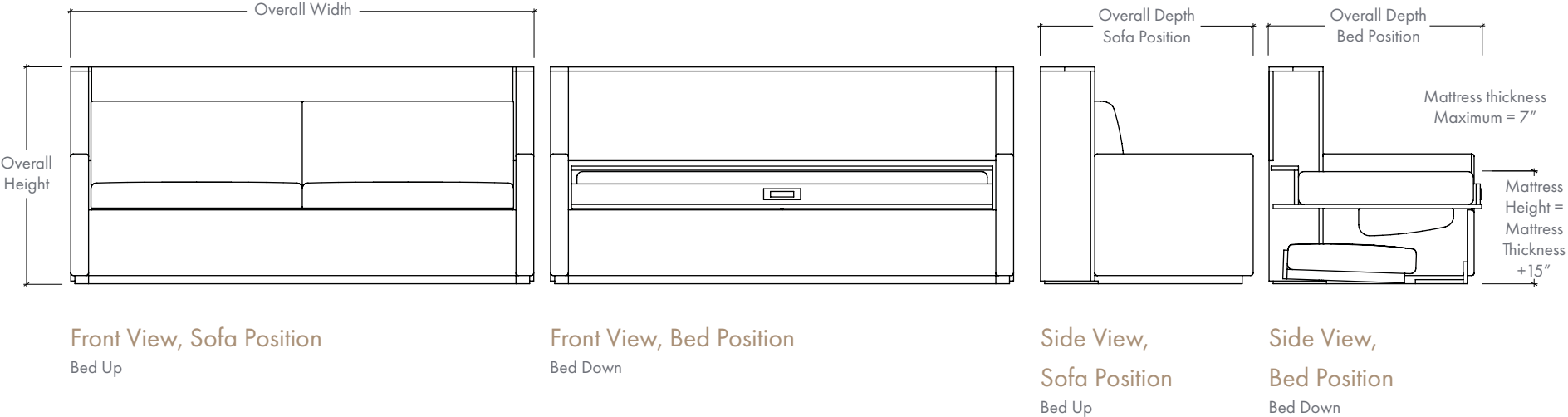
86-3/8"
90-1/4"
90-1/4"

Mattress Size

54"x 75"
60"x 80"
72"x 80"

Flip-SofaBed

Specification Sheet



Specifications

Select Size

■ Modified Twin

Overall Width

84-5/8"

Overall Height

39-5/8"

Overall Depth,
Sofa Position

37-3/4"

Overall Depth,
Bed Position

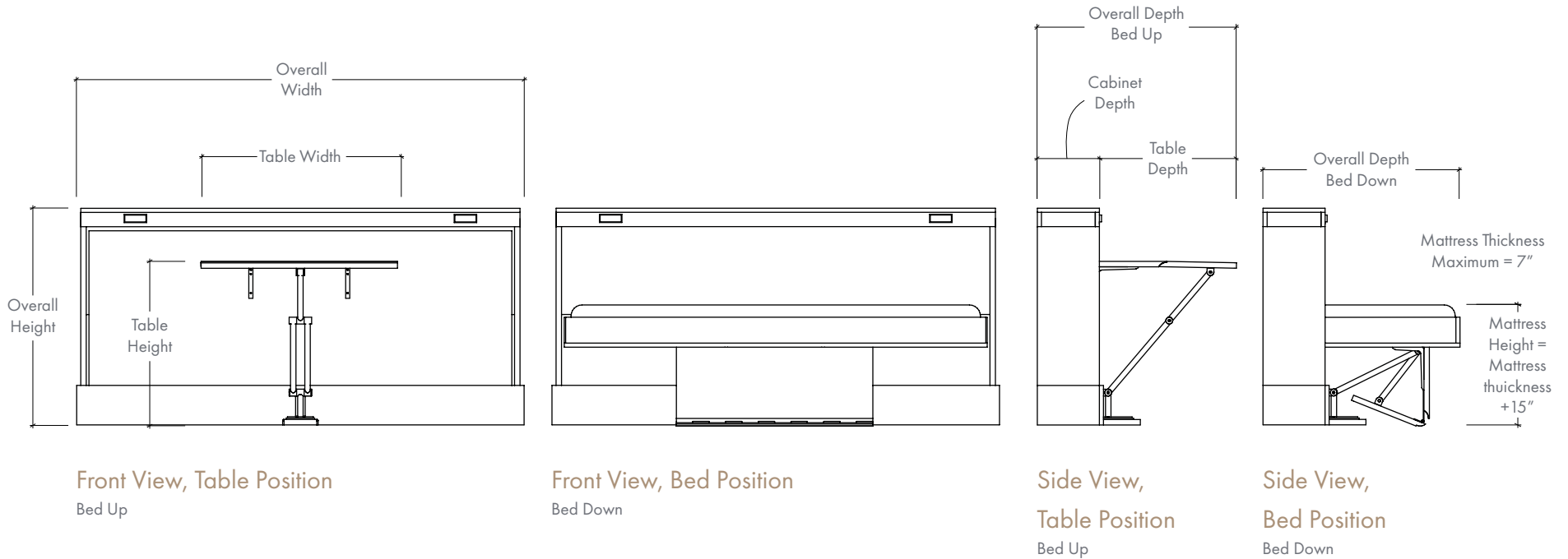
38-7/8"

Mattress Size

32" x 75"

Flip-Table Bed

Specification Sheet

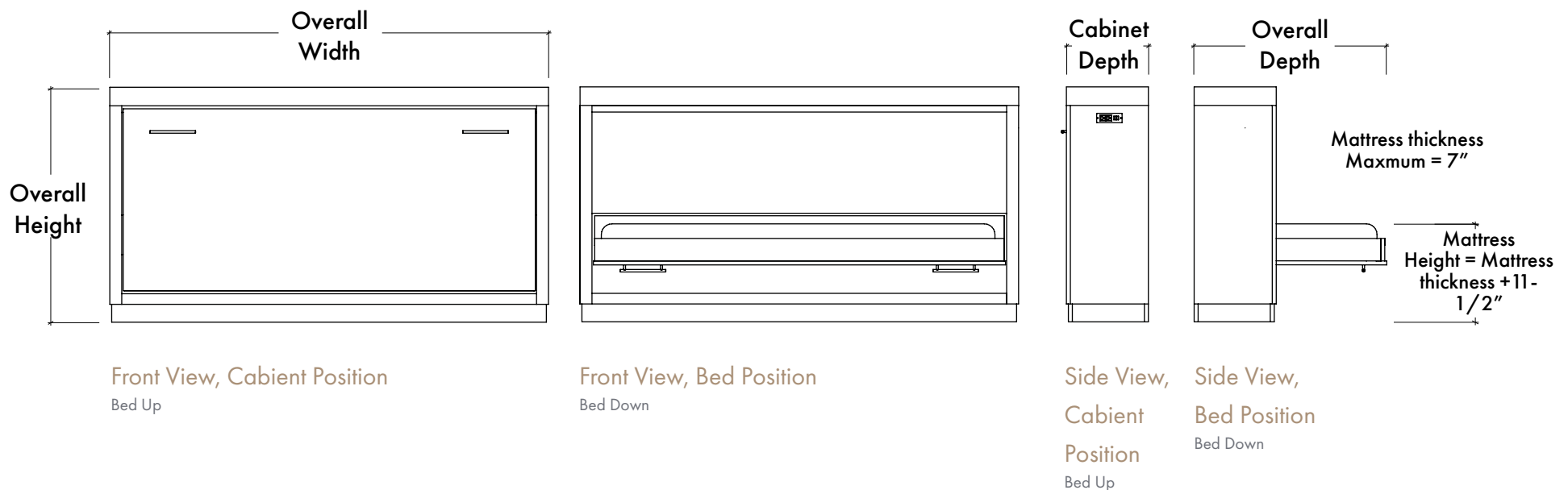


Specifications

Select Size	Overall Width	Overall Height	Overall Depth	Cabinet Depth	Overall Depth Bed Down	Mattress Size
<input type="checkbox"/> Modified Twin	82-1/2"	39-3/4"	37-1/4"	11-3/8"	36-1/8"	32" x 75"
	Table Width 36"	Table Height 30"	Table Depth 25-7/8"			

Flip-Wall Bed

Specification Sheet



Specifications

Select Size

- Modified Twin

Overall Width

82-3/4"

Overall Height

44-3/8"

Cabinet Depth

15-1/2"

Overall Depth

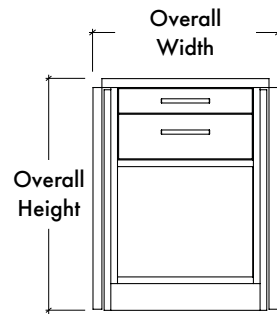
36-3/8"

Mattress Size

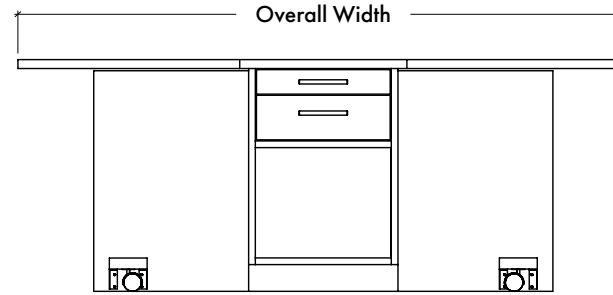
32" x 75"

WorkCube & WorkCube mini

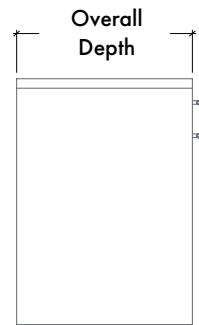
Specification Sheet



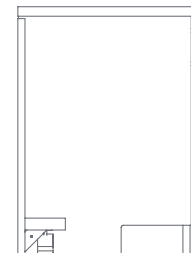
Front View, Closed



Front View, Open



Side View, Closed



Side View, Open

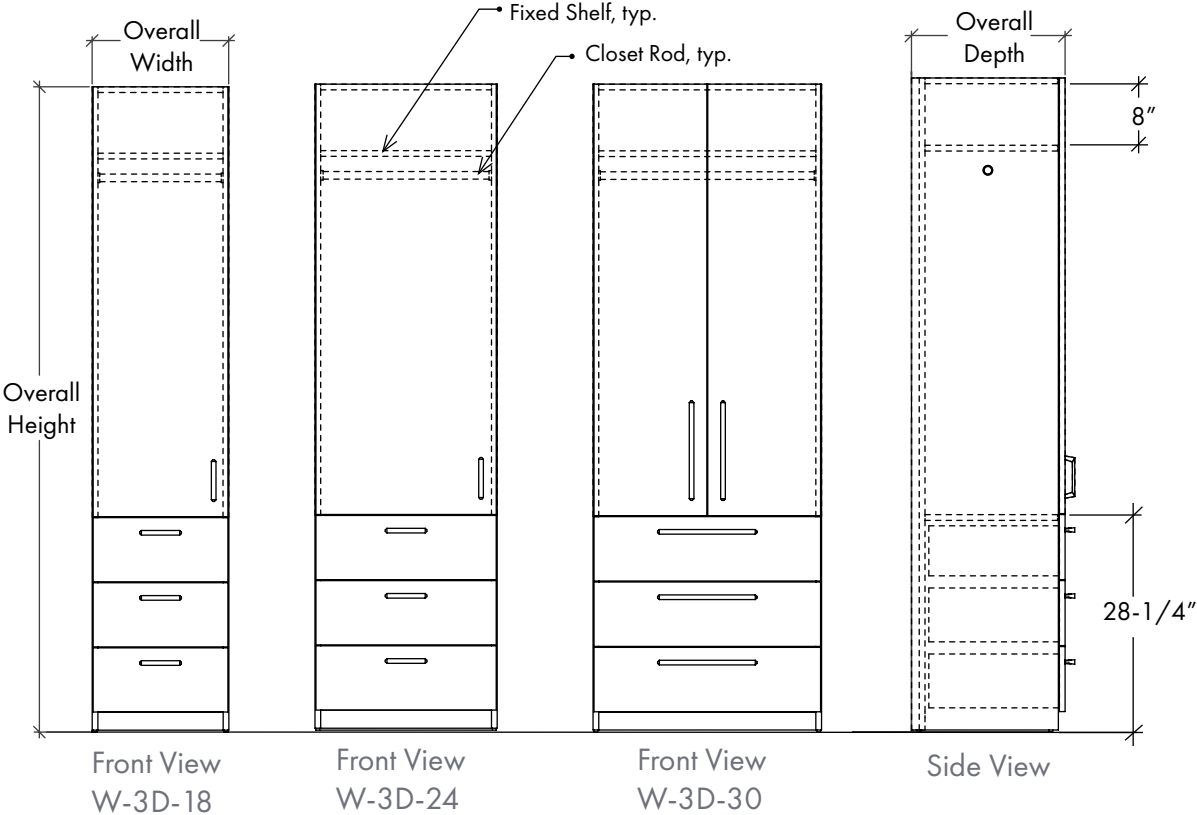
Specifications

Select Size	Overall Width	Overall Height	Height of Toekick	Overall Depth
■ WorkCube mini (WCM)	21" - 68-1/2"	26-1/2"	3-1/2"	18-1/2"
■ WorkCube (WC)	23" - 77-1/2"	30"	3-1/2"	20"

W-3D Wardrobe

with 3 Drawers and Closed Closet

Specification Sheet



Cabinet depth to match depth of bed: WallBed depth = 22";

Sofa-WallBed & TableBed depth = 20"

Cabinet height to match height of bed:

Full Size = 80" high
Queen = 80" high
Hotel King = 85" high

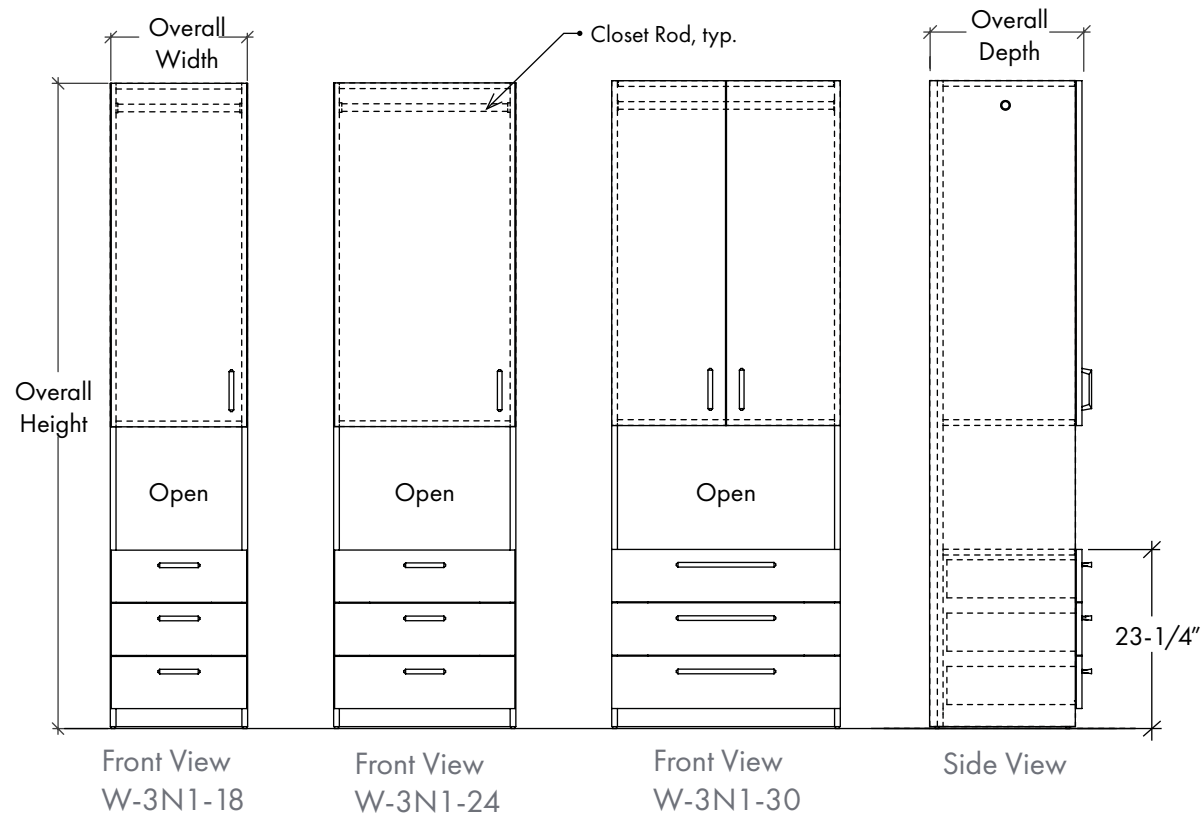
Specifications

Select Size	Overall Width	Overall Height	Height of Toekick	Overall Depth
W-3D-18	18"	80-85"	2-3/8"	Select Size 20" or 22"
W-3D-24	24"	80-85"	2-3/8"	20" or 22"
W-3D-30	30"	80-85"	2-3/8"	20" or 22"

W-3N1 Wardrobe

with 3 Drawers, Open Cubby, and Closed Closet

Specification Sheet



Cabinet depth to match depth of bed: WallBed depth = 22";

Sofa-WallBed & TableBed depth = 20"

Cabinet height to match height of bed:

Full Size = 80" high
Queen = 80" high
Hotel King = 85" high

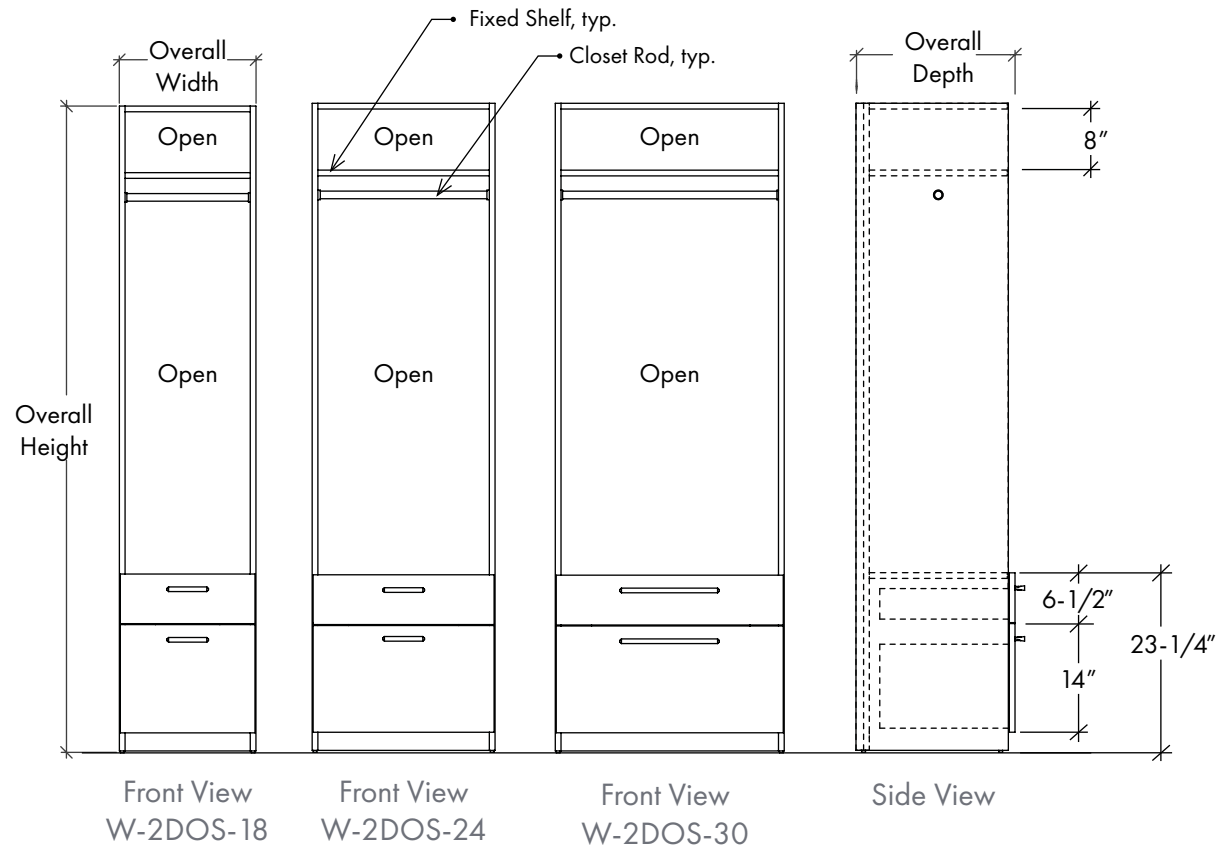
Specifications

Select Size	Overall Width	Overall Height	Height of Toekick	Overall Depth
■ W-3N1-18	18"	80-85"	2-3/8"	Select Size 20" or 22"
■ W-3N1-24	24"	80-85"	2-3/8"	20" or 22"
■ W-3N1-30	30"	80-85"	2-3/8"	20" or 22"

W-2DOS Wardrobe

with 2 Drawers and Open Closet

Specification Sheet



Cabinet depth to match depth of bed: WallBed depth = 22";

Sofa-WallBed & TableBed depth = 20"

Cabinet height to match height of bed:

Full Size = 80" high
Queen = 80" high
Hotel King = 85" high

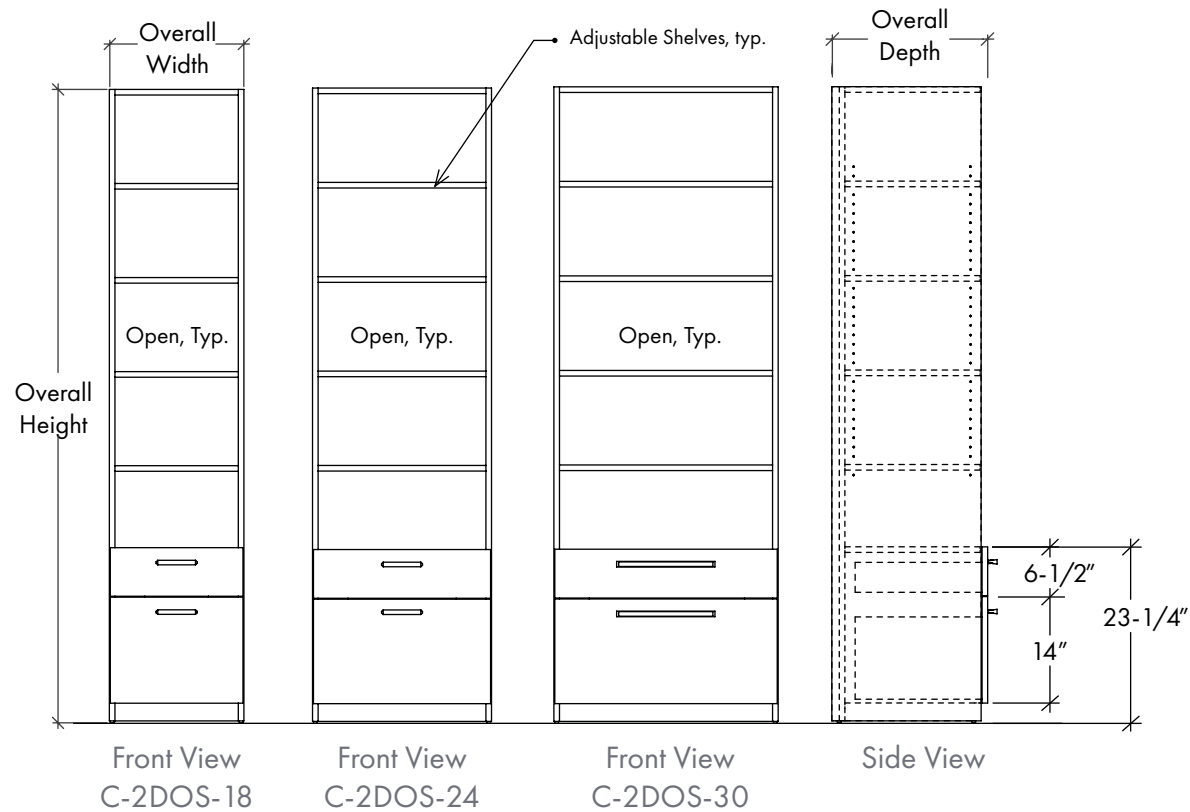
Specifications

Select Size	Overall Width	Overall Height	Height of Toekick	Overall Depth Select Size
■ W-2DOS-18	18"	80-85"	2-3/8"	20" or 22"
■ W-2DOS-24	24"	80-85"	2-3/8"	20" or 22"
■ W-2DOS-30	30"	80-85"	2-3/8"	20" or 22"

C-20S Cabinet

with 2 Drawers and Open Shelves

Specification Sheet



Cabinet depth to match depth of bed: WallBed depth = 22";

Sofa-WallBed & TableBed depth = 20"

Cabinet height to match height of bed:

Full Size = 80" high
Queen = 80" high
Hotel King = 85" high

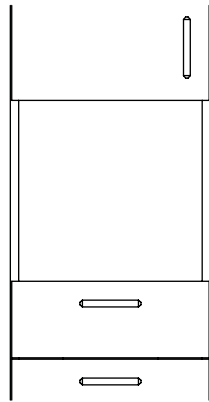
Specifications

Select Size	Overall Width	Overall Height	Height of Toekick	Overall Depth Select Size
■ C2DOS-18	18"	80-85"	2-3/8"	20" or 22"
■ C2DOS-24	24"	80-85"	2-3/8"	20" or 22"
■ C2DOS-30	30"	80-85"	2-3/8"	20" or 22"

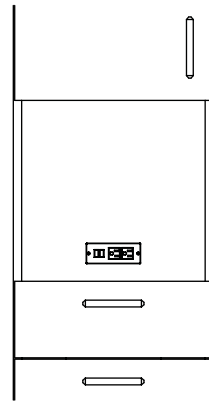
Backer Options

for Cabinetry (front view)

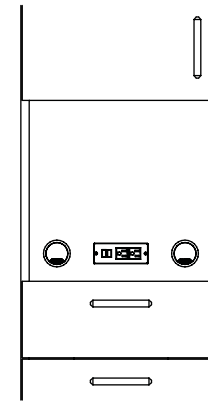
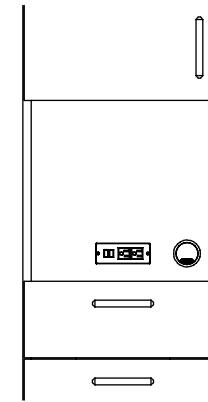
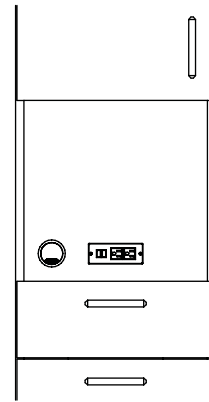
Electrical Configuration Options



Finished Backer
(Standard)

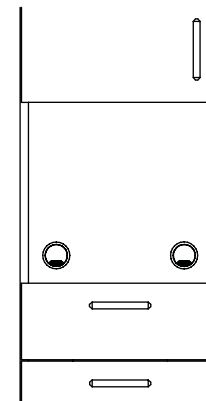
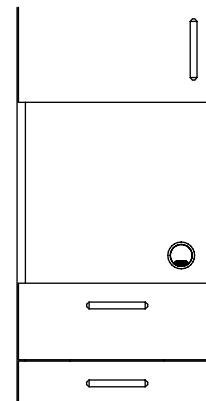
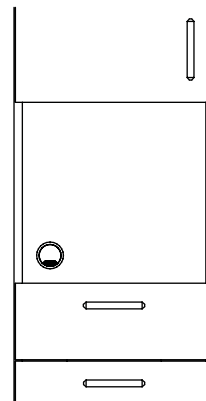
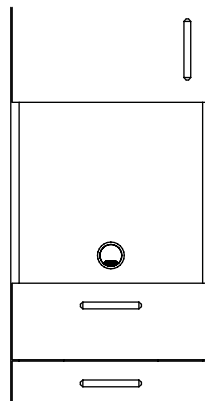


Finished Backer
with InovaHub



Finished Backer with InovaHub
and Grommet

InovaHub and Grommet
are located 2-1/2" on
center from the top of
the Shelf, typ.

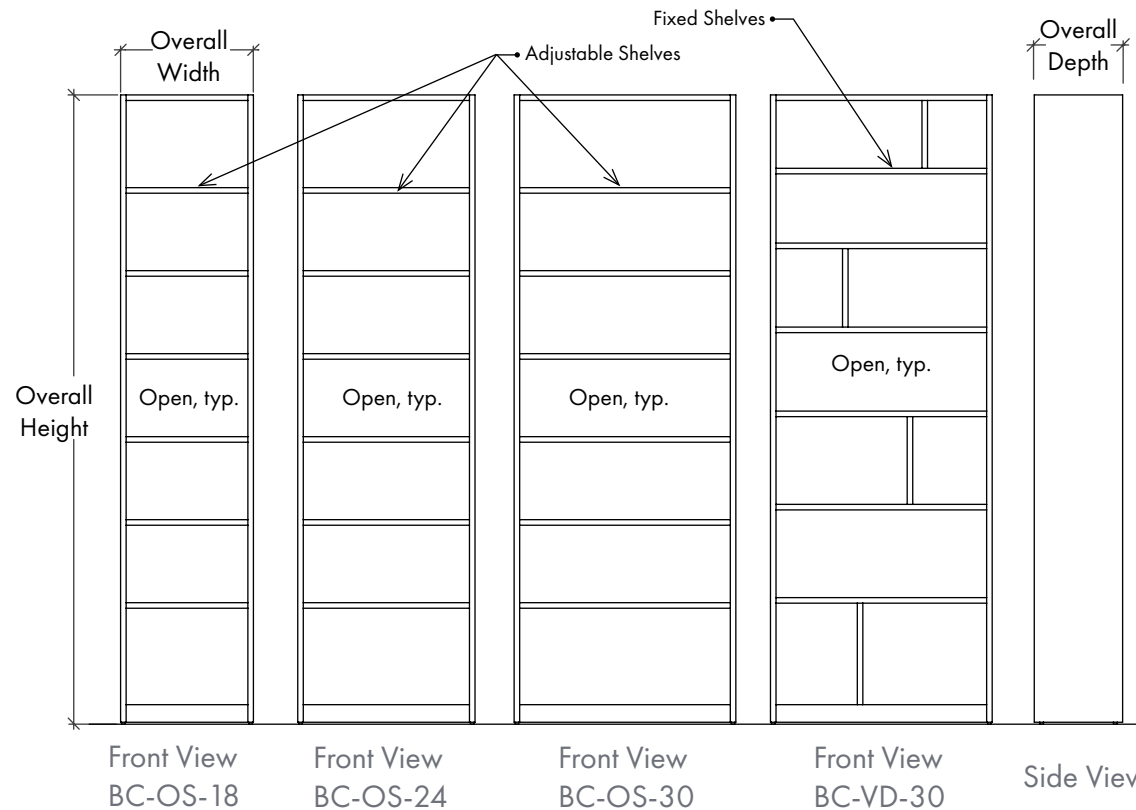


Finished Backer with Grommet

Bookcases

Specification Sheet

| 113



Cabinet height to match height of bed:

Full Size = 80" high
Queen = 80" high
Hotel King = 85" high

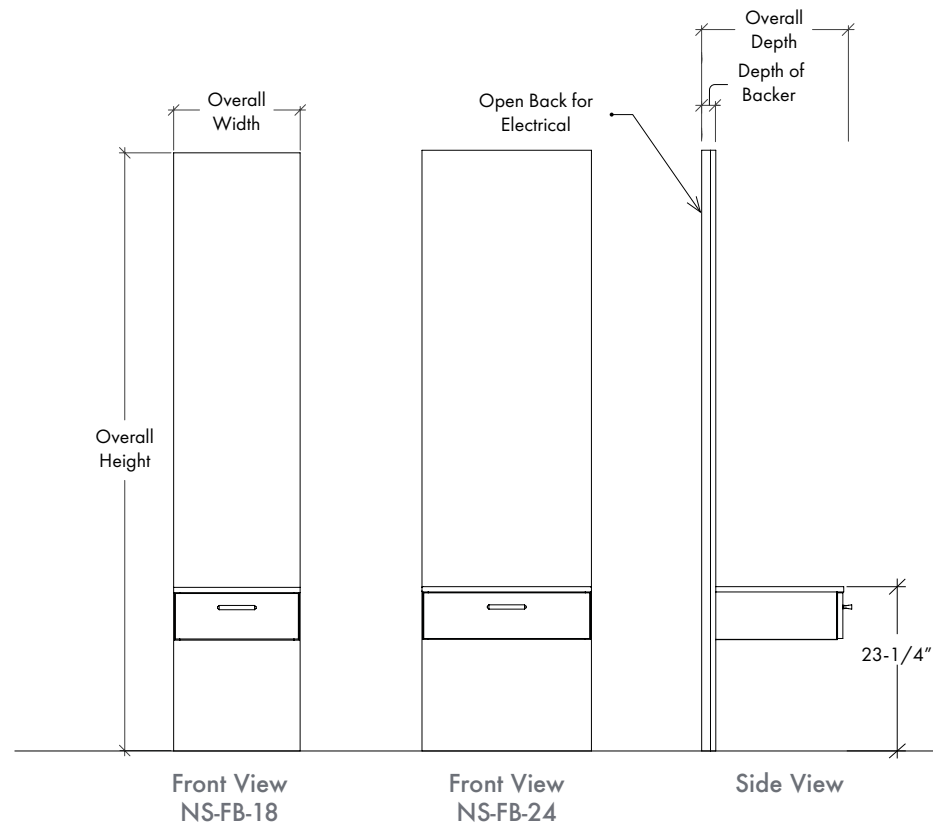
Specifications

Select Size	Overall Width	Overall Height	Height of Toekick	Overall Depth
■ BC-OS-18	18"	80-85"	2-3/8"	12"
■ BC-OS-24	24"	80-85"	2-3/8"	12"
■ BC-OS-30	30"	80-85"	2-3/8"	12"
■ BC-VD-30	30"	80-85"	2-3/8"	12"

Floating Nightstands

with 1 Drawer and Backer

Specification Sheet



Cabinet depth to match depth of bed: WallBed depth = 22";

Sofa-WallBed & TableBed depth = 20"

Cabinet height to match height of bed:

Full Size = 80" high
Queen = 80" high
Hotel King = 85" high

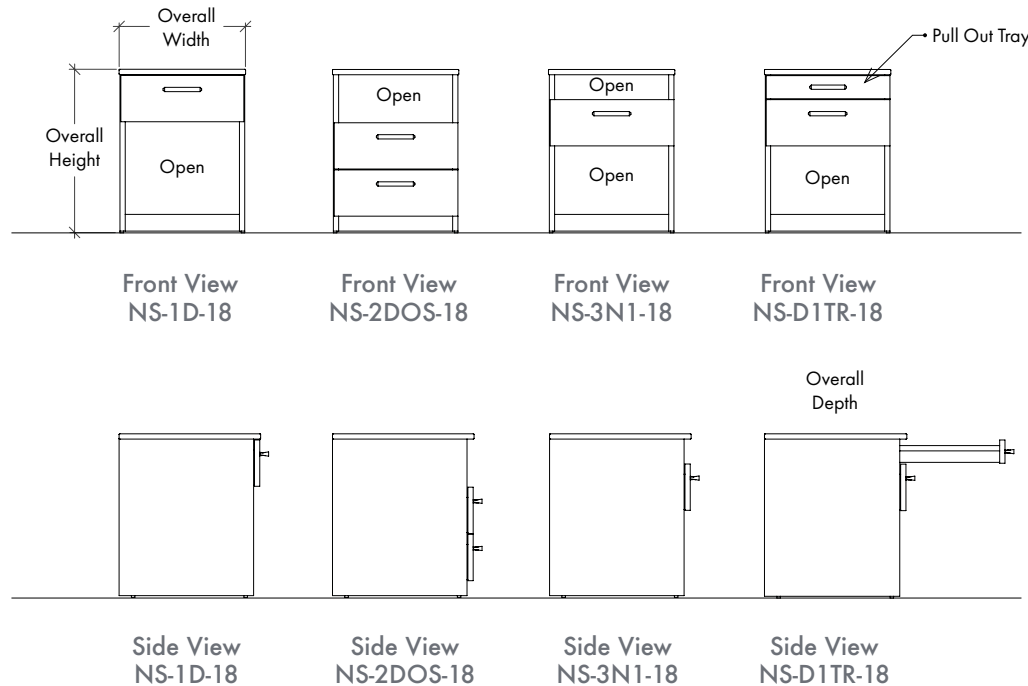
Specifications

Select Size	Overall Width	Overall Height	Depth of Backer	Overall Depth
■ NS-FB-18	18"	80" or 85"	2"	20" or 22"
■ NS-FB-24	24"	80" or 85"	2"	20" or 22"

Standard Nightstands

Specification Sheet

| 115



Nightstand height to match height of bed:

Full Size = 80" high
Queen = 80" high
Hotel King = 85" high

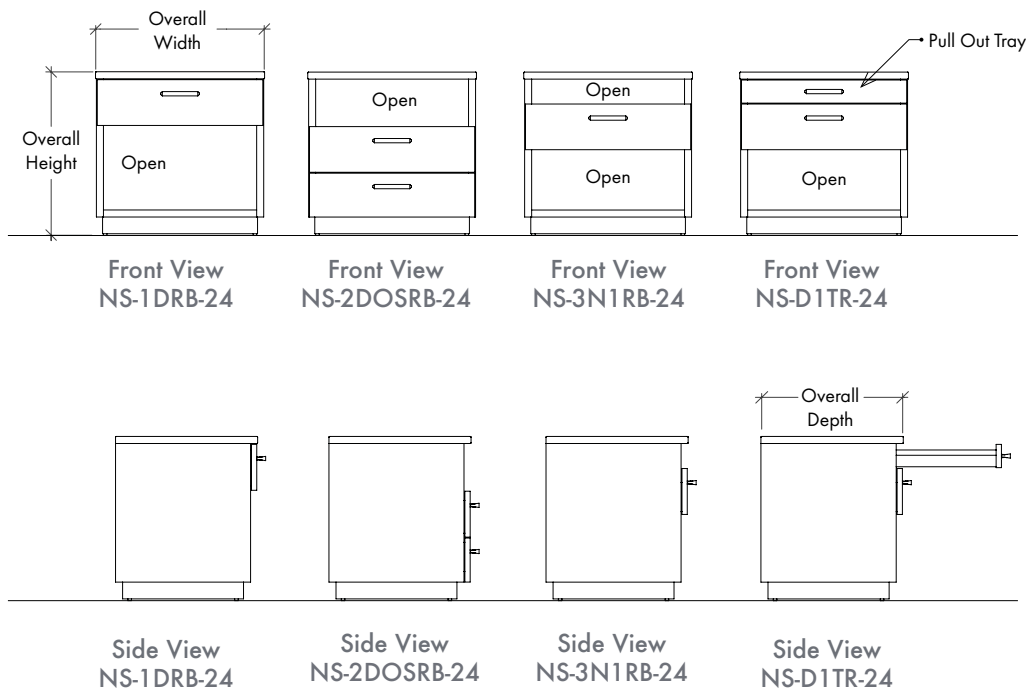
Specifications

Select Size	Overall Width	Overall Height	Height of Toekick	Overall Depth
■ NS-1D-18	18"	23-1/4"	2-3/8"	20" or 22"
■ NS-2DOS-18	18"	23-1/4"	2-3/8"	20" or 22"
■ NS-3N1-18	18"	23-1/4"	2-3/8"	20" or 22"
■ NS-D1TR-18	18"	23-1/4"	2-3/8"	20" or 22"

Nightstands

with Recessed Base

Specification Sheet



Nightstand height to match height of bed:

Full Size = 80" high
Queen = 80" high
Hotel King = 85" high

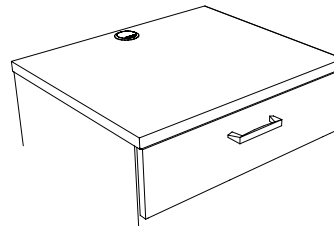
Specifications

Select Size	Overall Width	Overall Height	Height of Toekick	Overall Depth
■ NS-1DRB-24	24"	23-1/4"	2-3/8"	20" or 22"
■ NS-2DOSRB-24	24"	23-1/4"	2-3/8"	20" or 22"
■ NS-3N1RB-24	24"	23-1/4"	2-3/8"	20" or 22"
■ NS-D1TRB-24	24"	23-1/4"	2-3/8"	20" or 22"

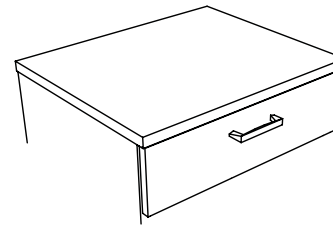
Top Options

for Nightstands (top view)

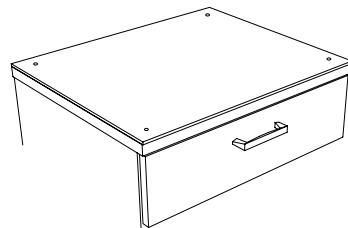
Electrical Configuration Options



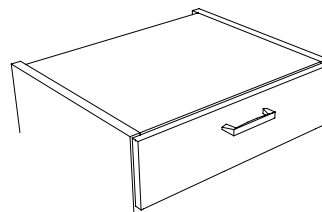
Finished Top with Grommet



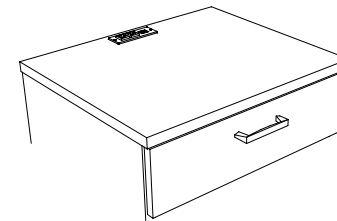
Finished Top (Standard)



Finished Top with 1/4" Tempered Glass



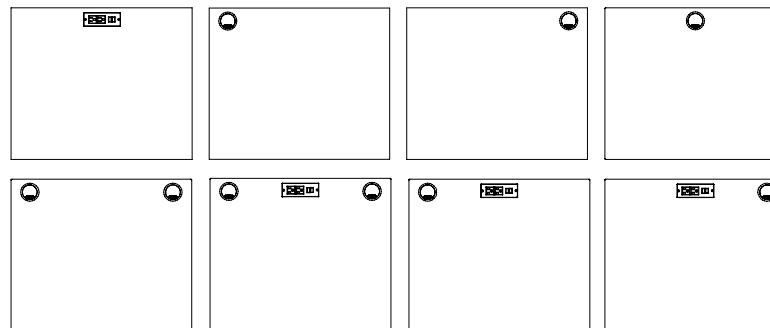
Subtop for Stone Top (By Others)



Finished Top with InovaHub

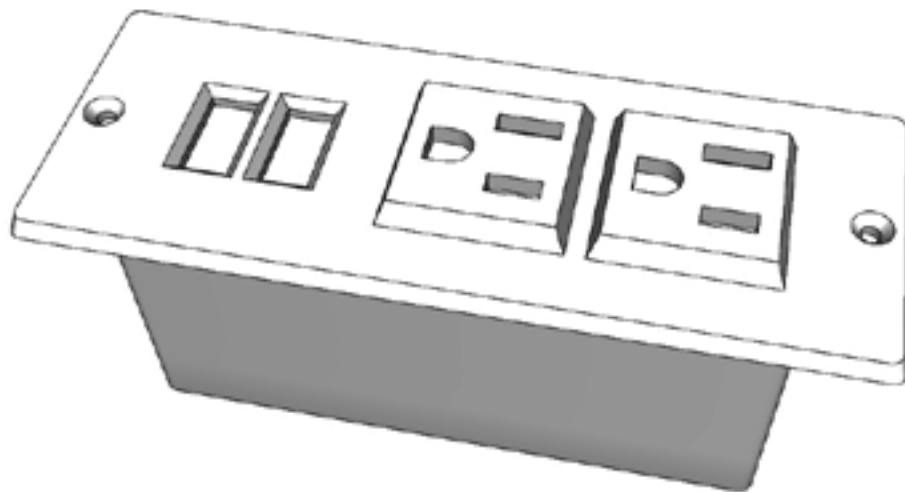
InovaHub and Grommet are located 3/4" from the back of the unit.

InovaHub and Grommet available on Finished Tops only



InovaHub

Specification Sheet



(2) 15A Outlets
(2) USB charging ports
USB output: 5V,2.1A

Dimensions:
5" long x 2" wide

Mount: Surface
Inova standard location: mounted
on shelf (other options available)

Finishes:
Available in black or white finish

Power requirement:
15A / 125V
Cable: 13Ft, SJT16AWG
Plug: 45-degree flat wall plug

Material:
Fire resistance ABS housing and
Copper component.

UL approved

Warranty

Inova LLC, of Guilderland Center, NY warrants its product mechanisms to be free of material or manufacturing defects for fifteen (15) years from the date of shipment.

Case goods and panel components of our products are warrantied to be free of material or manufacturing defects for five (5) years from the date of shipment.

Upholstery components are warrantied as follows:

- Fabrics are warrantied only to the extent of the warranty provided by the fabric supplier. Since manufacturers of upholsteryfabricsdonotguaranteetheirproductsforwearing quality, color- fastness, shrinkage, wrinkling and stretching, those properties are not covered under this warranty.
- Cushion foam is warrantied against abnormal loss of resiliency of the upholstered furniture, for three (3) years. Abnormal wear and abnormal loss of resiliency should not be confused with softening and flattening of the foam and fibers, which are considered normal wear, and are not defects.
- Other filling Materials are warrantied against loss of resiliency for three (3) years. Compressing of polyester with use is not considered loss of resiliency. From time to time, your upholstered furniture will need fluffing up as any upholstered furniture should be regulated with use.

Faulty parts will be replaced or repaired to a serviceable condition free of charge to the original purchaser, providing that the products were properly installed and maintained in accordance with the manufacturer's assembly and maintenance instructions. No warranty is made for wear under normal usage, exposure to extreme heat or moisture, alterations or abuse.

The foregoing warranty is exclusive and Inova makes no other warranties or claims to fitness for purpose or warranties of marketability.

Repair or replacement in accordance with this warranty is the buyer's sole and exclusive remedy for any defective products, whether buyer's claim arises under contract, tort or otherwise. Seller's liability on any claim of any kind shall in no case exceed the price allocable to the merchandise which gives rise to the claim. In no event shall Inova be liable for special, incidental or consequential damages.

Inova assumes no liability for products lost or damaged in shipment. Buyer should not accept damaged shipments. Inova will assist Buyer in settling freight claims if documents sufficient to substantiate the claim are received within fifteen days from receipt of shipment.

All repairs and returns must be approved, in writing, by the factory before action is taken. All claims are to be reported to: Inova LLC, Customer Service Department, PO Box 20, Guilderland Center, NY 12085.



info@inovabed.com

518.861.3400

www.inovabed.com