

The logo features the word "Ajustco" in a white, bold, sans-serif font. The letter "j" has a distinctive horizontal bar extending to the left. The logo is centered within a white rectangular border that has four white hexagonal shapes at its corners, resembling a mounting plate. This central element is set against a black background at the top and a red background at the bottom.

Ajustco

www.Ajustco.com

Confidential 2019



- **IP company producing only patented innovations.**
- **In-house production management team in China, India and the USA, delivering high quality products and stable delivery timeframes.**
- **Extensive experience in the construction trades and development industry.**

Latest Innovation



The ANCHOR THREAD is a revolutionary embedded anchoring system that requires no drilling to install and has a work load spec of 5,000 lbs.



**ANCHOR
THREAD™**

The system is installed pre pour to maximize safety and productivity by being available for inspection and utilization immediately upon stripping your formwork.



**ANCHOR
THREAD™**

Up until now, construction trades have been drilling into freshly cured concrete to install anchor points, this process generates free flying ground silica dust that is hazardous to the health of those exposed to it and costly to comply with the safety regulations that are mandated for that process.



**ANCHOR
THREAD™**

Current method used



The current method used is to drill holes in the freshly poured concrete and install a mechanically fastened anchor



Installed in Column Forms



Anchor Threads installed in column forms before they close them up and pour the concrete. These will be used for leading edge protection.



Installed in Column Forms



Anchor Threads
after the pour, ready
to be utilized.
Leading edge cables
can now be installed
immediately
eliminating the need
for a wood barrier.



Leading edge hook



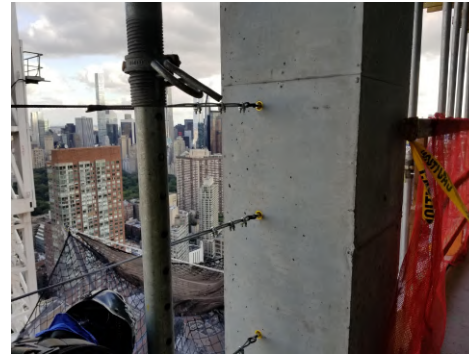
Anchor Threads installed in the column with hooks attached for leading edge cables.



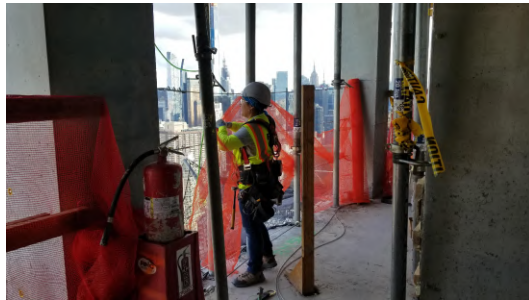
Leading edge cables



Anchor Threads installed in the column with leading edge cables attached.



Leading edge netting



Anchor Threads installed in the column with leading edge netting attached.



**The beauty of the ANCHOR
THREAD system is not only that
it virtually ELIMINATES the need
to drill into freshly cured
concrete but it also minimizes
the waste of time, labor and
material, ultimately providing
unparalleled safety and
efficiency to the job site.**



**ANCHOR
THREAD™**

Installed in the Deck



Anchor Threads installed in the deck and the pour is about to bury them in the concrete



Installed in the Deck



Anchor Threads installed in the deck after the pour. These Threads can be used to hang anything. No more drilling!



The Anchor Thread system is designed with ease of integration in mind. Upon request we offer an iconography and 3D model package allowing for the Anchor Thread catalog to be easily implemented into any BIM or drawing specifications.



**ANCHOR
THREAD™**

**It can be color coded to organize
the anchor points.**



**As per OSHA and ASTM requirements:
Anchor Thread qualifies for fall protection,
leading edge protection, safety netting as
well as anchoring mechanicals such as
sprinkler lines, duct work, drop ceiling,
electrical and data distribution systems or
even as vertical or horizontal attachment
points for a multitude of architectural and
structural details. The configuration
possibilities are practically endless.**



**ANCHOR
THREAD™**

ANCHOR
THREADTM
safety built in