

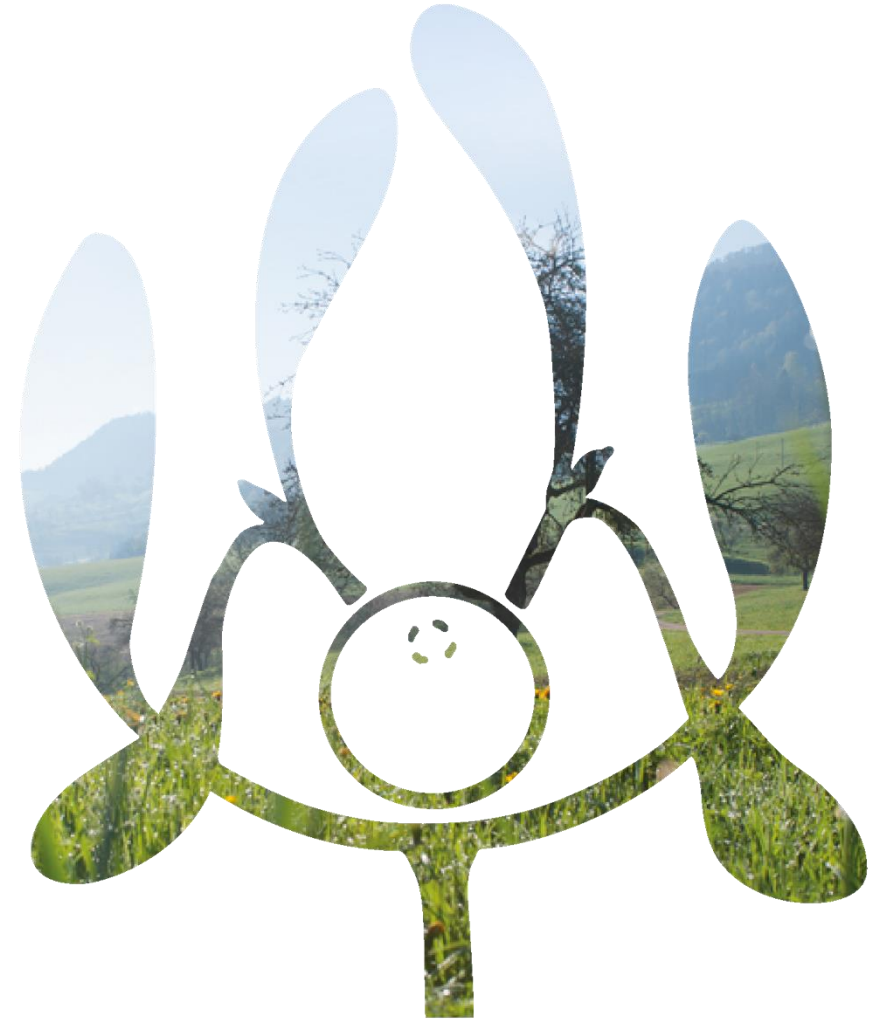
Mistletoe Therapy in Integrative Oncology

Anupriya Chowdhury

Homeopathic Physician, India

Scientific Assistant at Iscador AG, Switzerland

Holistic Life Coach, Switzerland



Contents

- Holistic Medicine
- Mistletoe & Cancer
- ISCADOR[®] Production
- Host Trees
- Metal Additions to Iscador
- Conclusions
- Discussion



Holistic Medicine

- The common aim of the patients well being irrespective of the approach or principles.
- Anthroposophy – Balancing or supplementing the different folds of human being when in a disease state.
- Homeopathy – Supporting the vital force.
- Ayurveda – Balancing the dosha or the elemental forces in the human being.
- Goal is to the treat the person as a whole and celebrate the individuality of the person.
- Believes in supplementing the organism to provide the strength to overcome the disease by itself.

Holistic medicine in supporting Cancer treatment

- Improvement of general health
- Prevention of relapses and metastases
- Reducing tumor related pain
- Reducing of cancer-related fatigue syndrome
- Acceleration of wound healing
- Improvement of appetite, sleep, weight, immunity
- Improvement of overall quality of life
- Improvement of the ability to cope with ongoing conventional treatment

Mistletoe throughout history

- Celts called it “All healing”
- Hippocrates (460 BC – 377 BC) advised the use of mistletoe against vertigo and epilepsy
- Celsus (25 BC – 50 AD) mentioned mistletoe in medical formulations like emollients used for abscesses, inflammation, scrofula and carcinoids
- Different place in European history and cultures

Mistletoe & Cancer

- Dependent on host tree
- Not your typical plant
- Different distribution
- Doctrine of Signature



Anthroposophic Medicine

- Anthroposophy was founded by Rudolf Steiner in 1905. It is an educative path towards inner spiritual development, mastered by attaining philosophical knowledge and understanding of one's self as well as the natural surrounding and the cosmos.
- In 1920, Rudolf Steiner along with Dr. Ita Wegman established Anthroposophic Medicine. An integrative form of medicine that takes into account the whole human being in its method, diagnosis and therapy. This is achieved by paying equal attention to the body, soul and spirit of the patient, thereby recognizing the person's own individual biography. The aim is to facilitate healing through nature based medicine to restore the harmony of the vital forces.



ISCADOR®

- ISCADOR® started as ISCAR and was developed by Wegman and Steiner. The incipient mistletoe preparation was already being used by Wegman on her Gynaecology patients at her practice in Zurich.
- Mistletoe growing on different host trees were considered for treating different types of Cancer. This is where individuality was maintained. The life forces taken from the host tree are of key significance for the efficacy of mistletoe in cancer treatment.
- Selection of mistletoe preparation is done considering the patient's constitution or gender and tumor localisation.

Composition

- Viscotoxins: Periphery of the bush, young leaves, summer time
- They act by puncturing the cell wall (periphery) of the cancer cells initiating necrosis.
- Lectins: Inner stems of the bush, high during winter.
- They act inside out, inactivating the ribosomes of the cancer cells leading to apoptosis
- In healthy human cells, viscotoxins and lectins in sub-toxic concentrations are able to induce DNA-Repair, this is not possible in cancer cells who have lost this ability for self-repair, making them much more vulnerable for the actions of these mistletoe proteins.

ISCADOR® Production



Host Trees

The host tree selection plays a significant role in deciding the type of ISCADOR® preparation used for specific types of Cancer.



Apple (Malus)

- Closer to ground, beautiful blossoms, round fruits.
- Associated to Kapha
- Highly indicative for treating tumours of female patients.
- Pre menopausal breast cancer.
- Tumours localised below the diaphragm, lower abdomen.
- Balanced ratio of lectins and viscotoxins.





Pine (Pinus)

- Slender and tall reaching towards the sun.
- Associated to Vata
- Tumours localised to the upper body.
- Post menopausal breast cancer.
- Solar qualities highly effective for cancer of outer layer (skin, the head)
- Low levels of lectins and viscotoxins makes it very well tolerable.





Oak (Quercus)

- Strong, robust tree with deep roots that grows for ages.
- Rare to find.
- Associated to Pitta.
- Various tumors like the endocrine, respiratory tract, digestive system, urogenital tract.
- High levels of lectins and viscotoxins.





Metal Additions to ISCADOR®

According to Anthroposophic Medicine, metals help the Higher Self to act on the lower constitutional entities of being.



Silver (Arg)

- Kapha (Earth + Water)
- The influence of moon on the water element on earth.
- Moon associated with intuition, emotion.
- Constitution described as strong, thick-boned, and caring.



Silver (Arg)

- Planet: Moon
- Element: Water
- Constitution: Phlegmatic
- Archetype: Reproduction, sleep (unconsciousness/pre-consciousness)
- Organ assignment: Reproductive organs (abdomen); also nervous-sense system
- Preparation: M c Arg.

Qu c Arg.



Copper (Cu)

- Pitta (Fire + Water)
- Controls heat, metabolism and transformation in the mind and body.
- Ambitious and focused but can be quick tempered and competitive.
- Constitution is strongest, prone to overheating, good appetite.



Copper (Cu)

- Planet: Venus
- Element: Fire
- Constitution: Choleric
- Archetype: Metamorphosis, transformation
- Organ assignment: Metabolic system; digestive organs, transformation and excretory organs
- Preparation: M c Cu.

Qu c Cu.



Mercury (Hg)

- Vata (Air + Space)
- Natural communicator as the planet Mercury.
- Strong association to Lungs due to the element Air.
- Can tend to be restless, active, alert, energetic and creative.
- Constitution is slender, towards the slim side with dry skin.

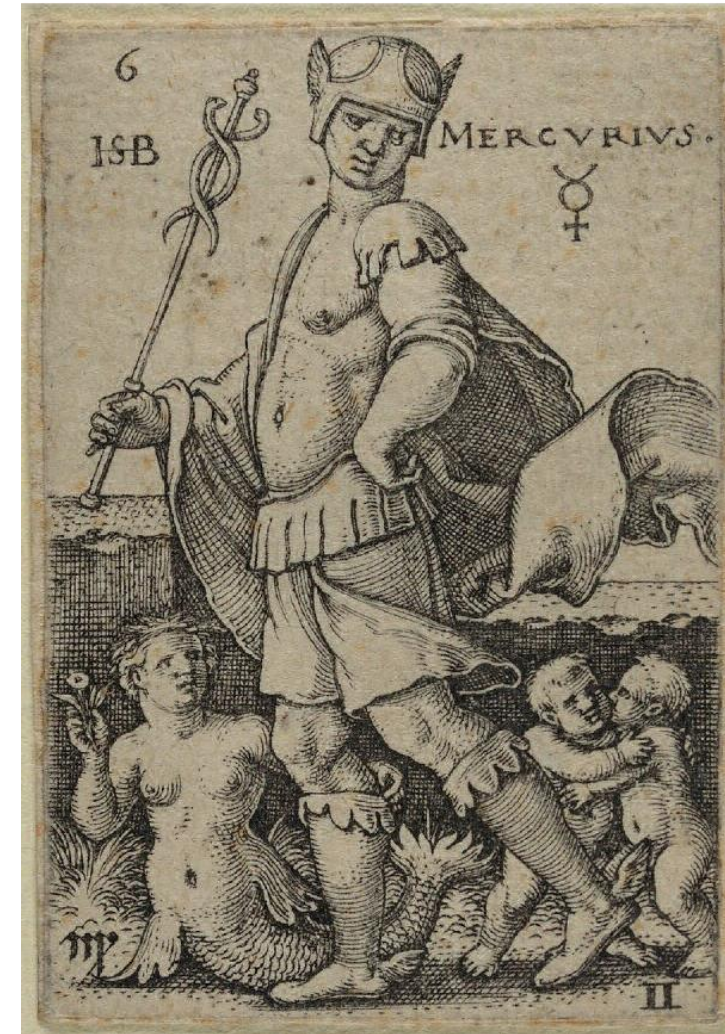


Mercury (Hg)

- Planet: Mercury
- Element: Air
- Constitution: Melancholic
- Archetype: Exchange, information, energy (ether)
- Organ assignment: Rhythmic system, mucous membranes of intestine and lungs, skin
- Preparation: M c Hg.

Qu c Hg.

P c Hg.



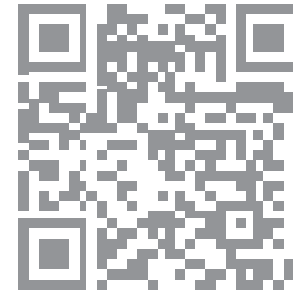
Conclusion

“I take his cancer to be a spontaneous growth, which originated in the part of the psyche that is not identical with consciousness. It appears as an autonomous function intruding upon consciousness.”

-Carl Jung



ISCADOR® Academy



register now:

www.iscador.com/professionals



Thank you for your attention

I am now open to your questions. Please visit us at Stand **B35** for further discussions.

