

The Glossary & the Splossary

Tools to reduce barriers to effective communication and engagement in social prescribing



GIG
CYMRU
NHS
WALES

Iechyd Cyhoeddus
Cymru
Public Health
Wales



Canolfan
PRIME Cymru
Wales PRIME
Centre

Dr Simon Newstead & Professor Carolyn Wallace

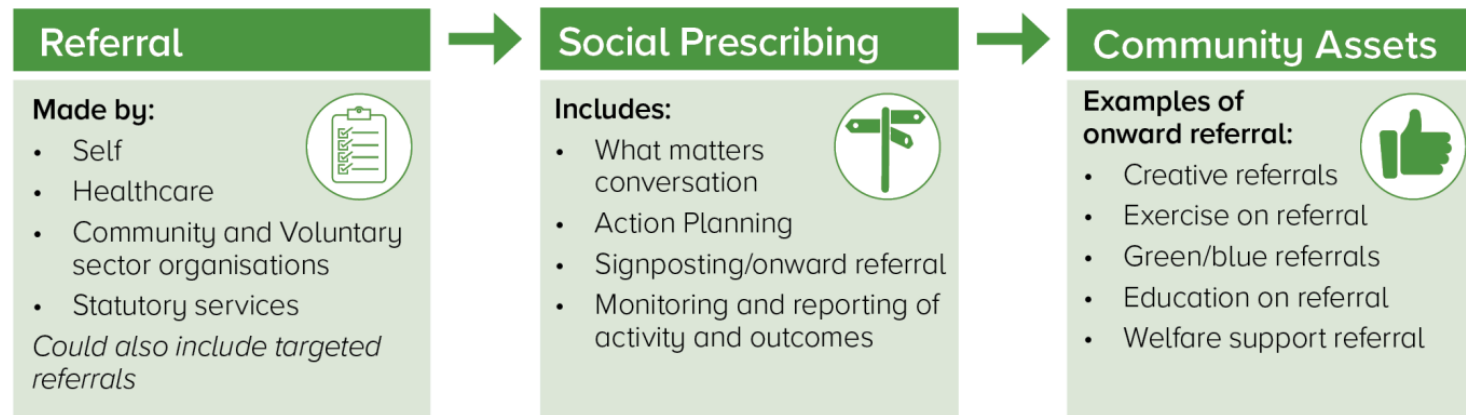
University of South Wales, Wales School for Social Prescribing Research (WSSPR)

Amber Pringle, Bethan Jenkins & Dr Amrita Jesurasa

Primary Care Division, Public Health Wales

What is Social Prescribing?

- Slightly models and descriptions of social prescribing used by the nations of the UK
- **Within Wales** social prescribing uses a cross-sector working practice & a “no wrong door” approach.
- **SP = umbrella term to describe a pathway that:**
 - Uses a person-centred approach
 - To support & empower individuals
 - By connecting them to activities/services in their community



The Need for a Glossary of Terms for Social Prescribing

- The concept of social prescribing is relatively simple – the terminology used can be confusing
- Social prescribing has seen a period of growth and development over the last decade
 - Resulted in diverse and confusing terminology
 - Creates barriers to engagement & impairs communication.
- WSSPR (2018) identified the need for a tool to help:
 - Clarify SP terminology
 - Standardise SP terminology
- WSSPR & PHW committed to the development of a glossary of terms.



Development of the glossary of terms

Scoping Review

- Screening:
 - Title & abstract (46,242)
 - Full text (738)
- Charting data (205 docs)
 - UK peer (163)
 - Welsh grey (42)
- Terms identified (373)



GCM Study

- Brainstorming task
 - SP professionals in Wales
 - Statements (120)
 - Terms identified (49)



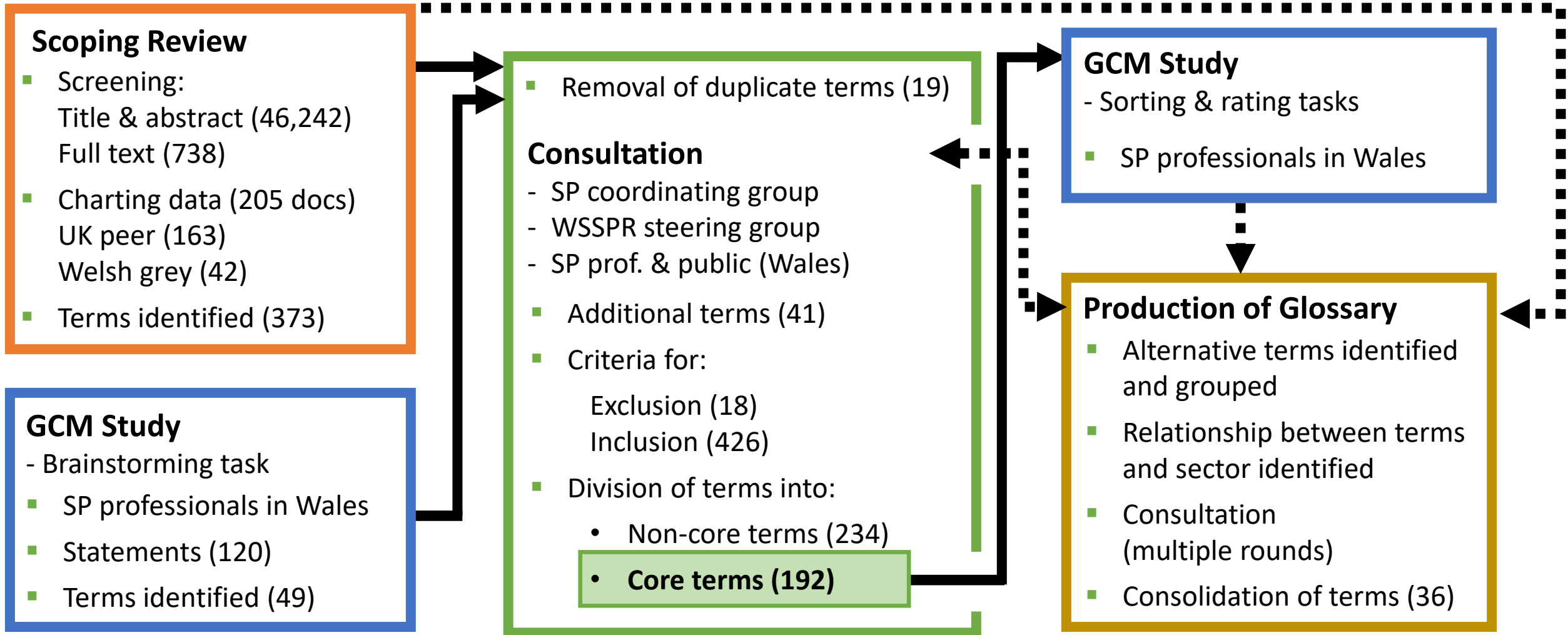
- Removal of duplicate terms (19)

Consultation

- SP coordinating group
- WSSPR Steering group
- SP Prof. & public (Wales)
- Additional terms (41)
- Criteria for:
 - Exclusion (18)
 - Inclusion (426)
- Sub-categorisation :
 - Non-core terms (234)
 - **Core terms (192)**

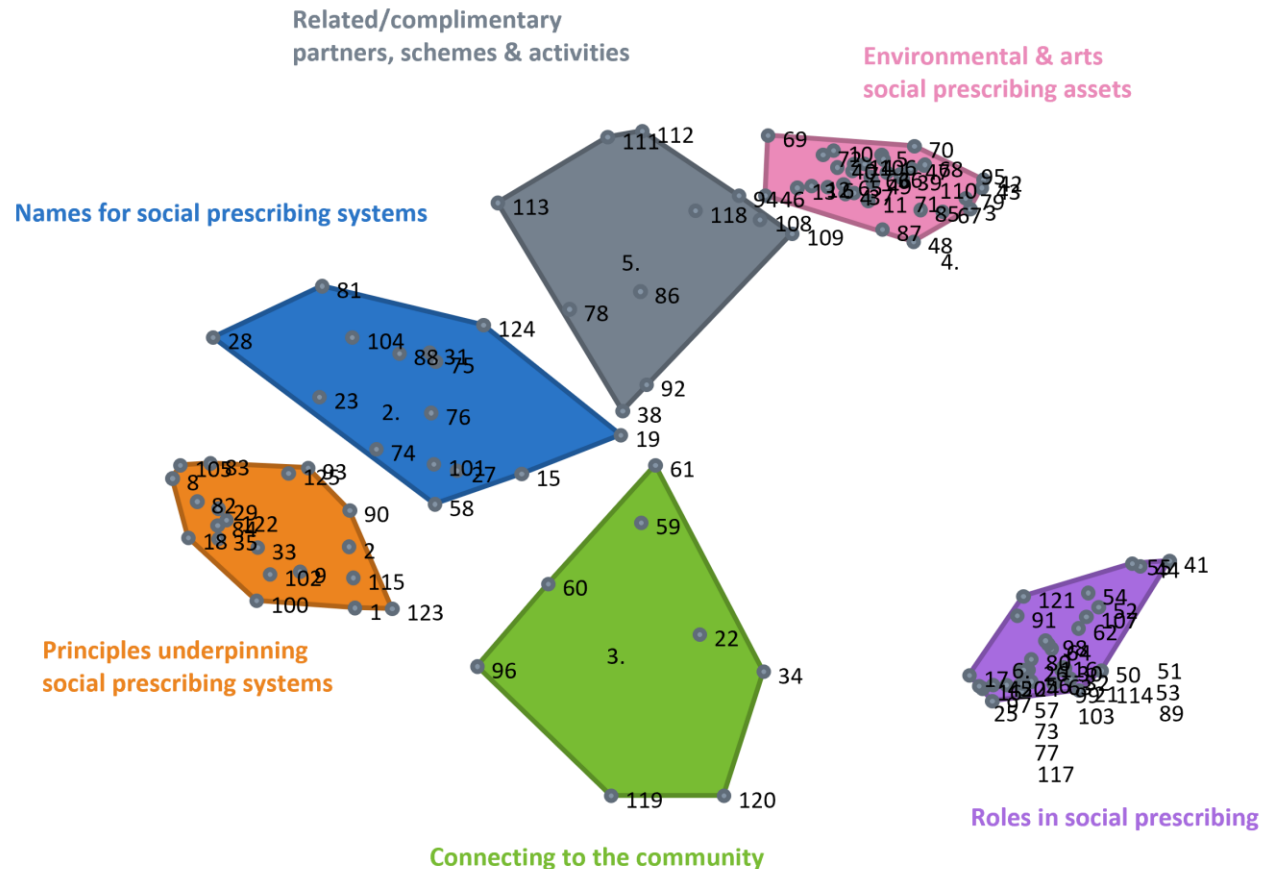
- **Scoping review** (373 terms identified)
 - Terms
 - Location in the UK
 - Authored perspective
- **Brainstorming task** (49 Terms)
- **Consultation** (41 terms)
- **A total of 426 terms were identified.**
 - Sub-categorised into core/non-core terms.

Development of the glossary of terms



Development of the glossary of terms

- **Sorting Task (Core terms): 6 clusters**
- Relationship & strength of the relationship between terms



GCM Study

- Sorting & Rating Tasks

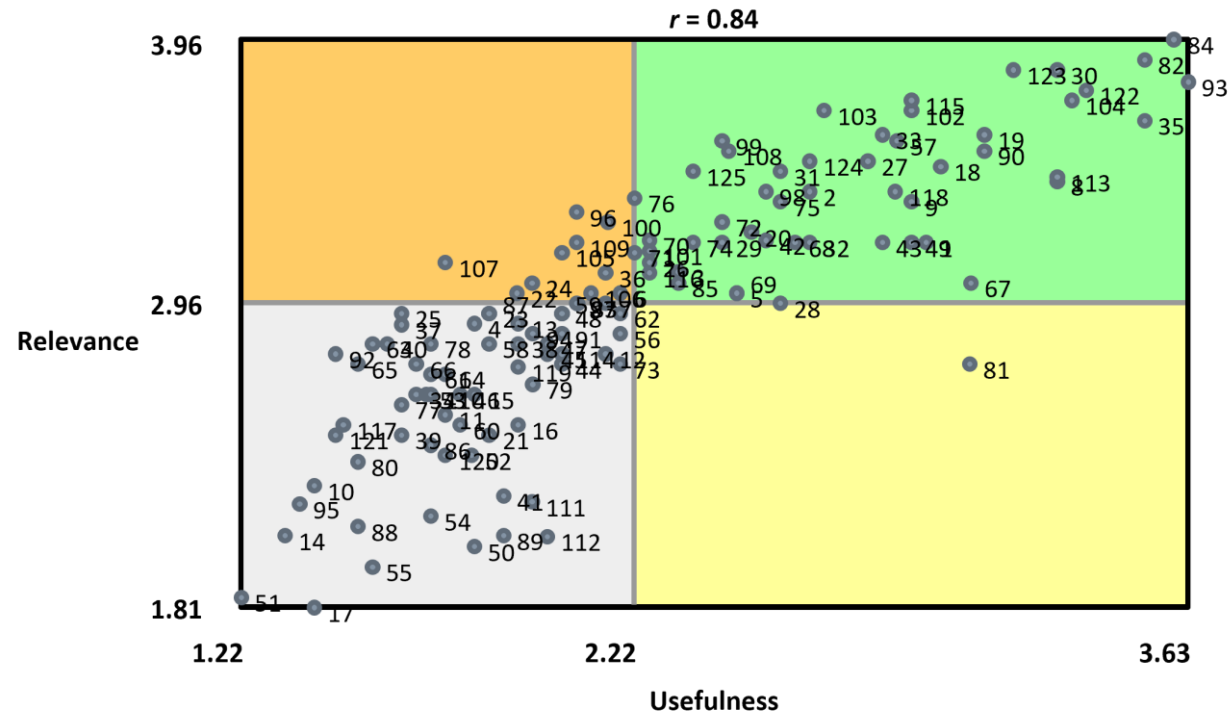
- SP professionals in Wales

Production of Glossary

- Alternative terms identified and grouped
- Relationship between terms and sector identified
- Consultation (multiple rounds)
- Consolidation of terms (36)

Development of the glossary of terms

- **Rating Task (Core terms):**
 - Usefulness in everyday practice
 - Relevance to social prescribing
- **Importance (generally and sector-specific)**



GCM Study

- Sorting & Rating Tasks

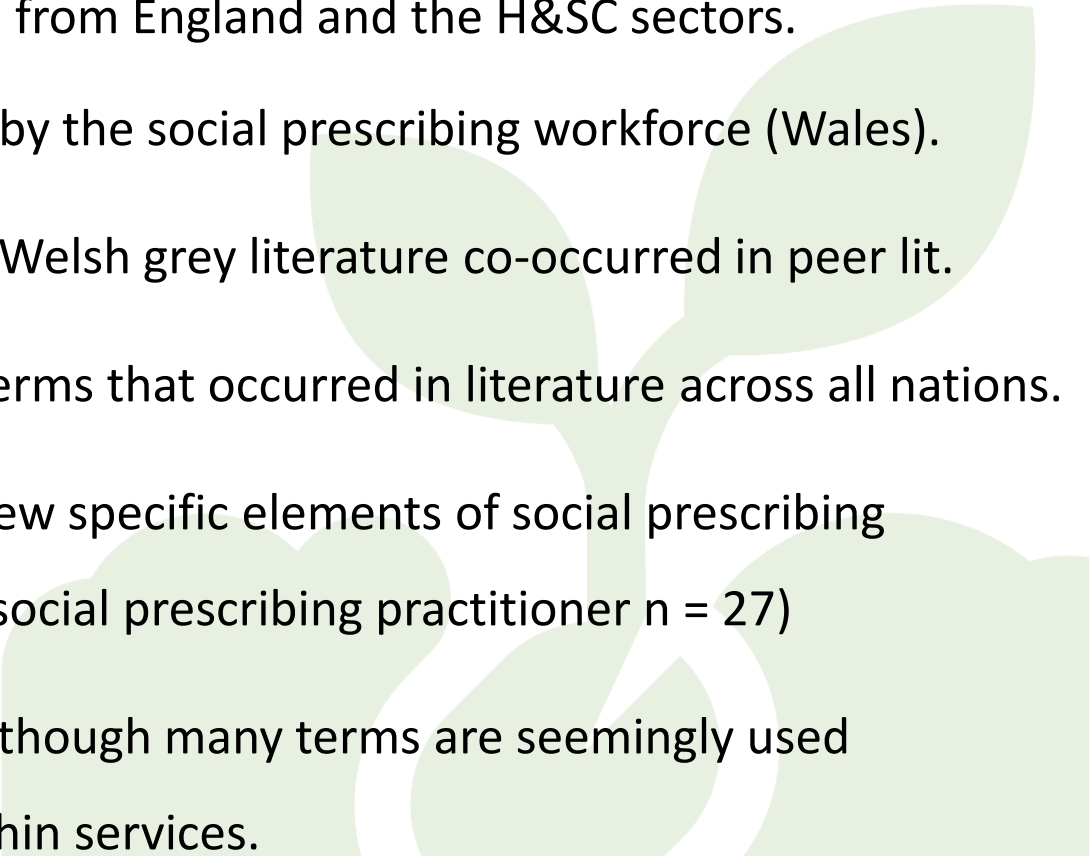
- SP professionals in Wales



Production of Glossary

- Alternative terms identified and grouped
- Relationship between terms and sector identified
- Consultation (multiple rounds)
- Consolidation of terms (36)

What we found

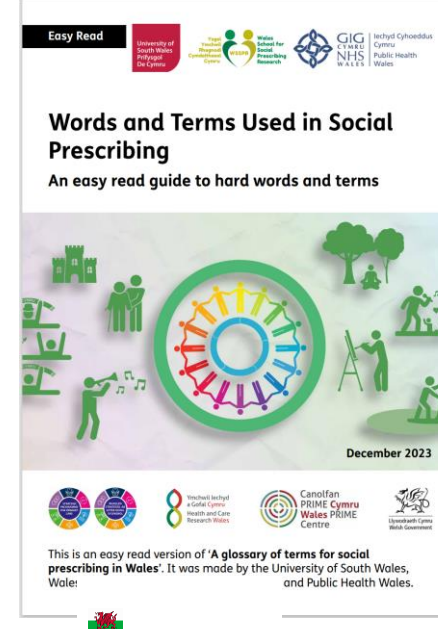
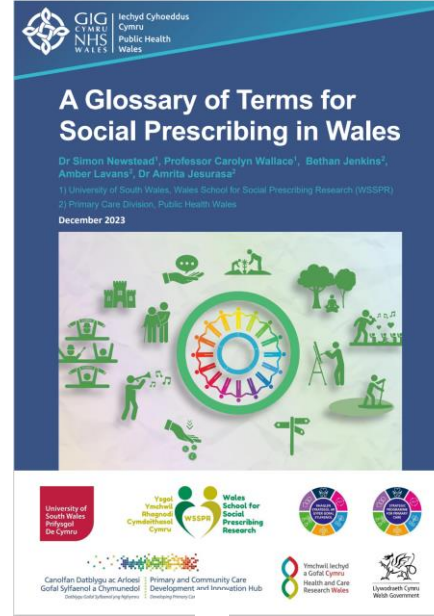
- The largest proportion of articles and terms originate from England and the H&SC sectors.
 - May not reflect the terminology commonly used by the social prescribing workforce (Wales).
 - Only one-third of the terms identified in the Welsh grey literature co-occurred in peer lit.
 - ‘Social prescribing & ‘link worker’ only two terms that occurred in literature across all nations.
 - Many terms identified describe/related to the same few specific elements of social prescribing (e.g., Process of social prescribing n = 28, Role of the social prescribing practitioner n = 27)
 - Some sector-specific preferences for certain terms, although many terms are seemingly used interchangeably with little standardisation across/within services.
- 

Development of the Glossary of Terms

- **Iterative process: used data (S/R & GCM) and feedback from consultation process.**
- **Most glossaries are a list of 25-50 words** (Tetlow et al., 2024)
- Diversity and complexity of social prescribing terminology necessitated a different approach.
 - We found that multiple terms were used to describe the same few aspects of social prescribing
- **Core Terms (192) → ‘Suggested Terms’ (36)**
 - Description
 - Alternative terms, sector-specific preferences for terms
 - Relationship of terms to each other

Development of the Glossary of Terms

- The glossary is available as:
- An interactive professional-facing PDF
- An interactive easy-read PDF
- A dedicated website www.splossary.wales



splossary™

Confused by social prescribing? We can help!

Switch between Welsh & English.

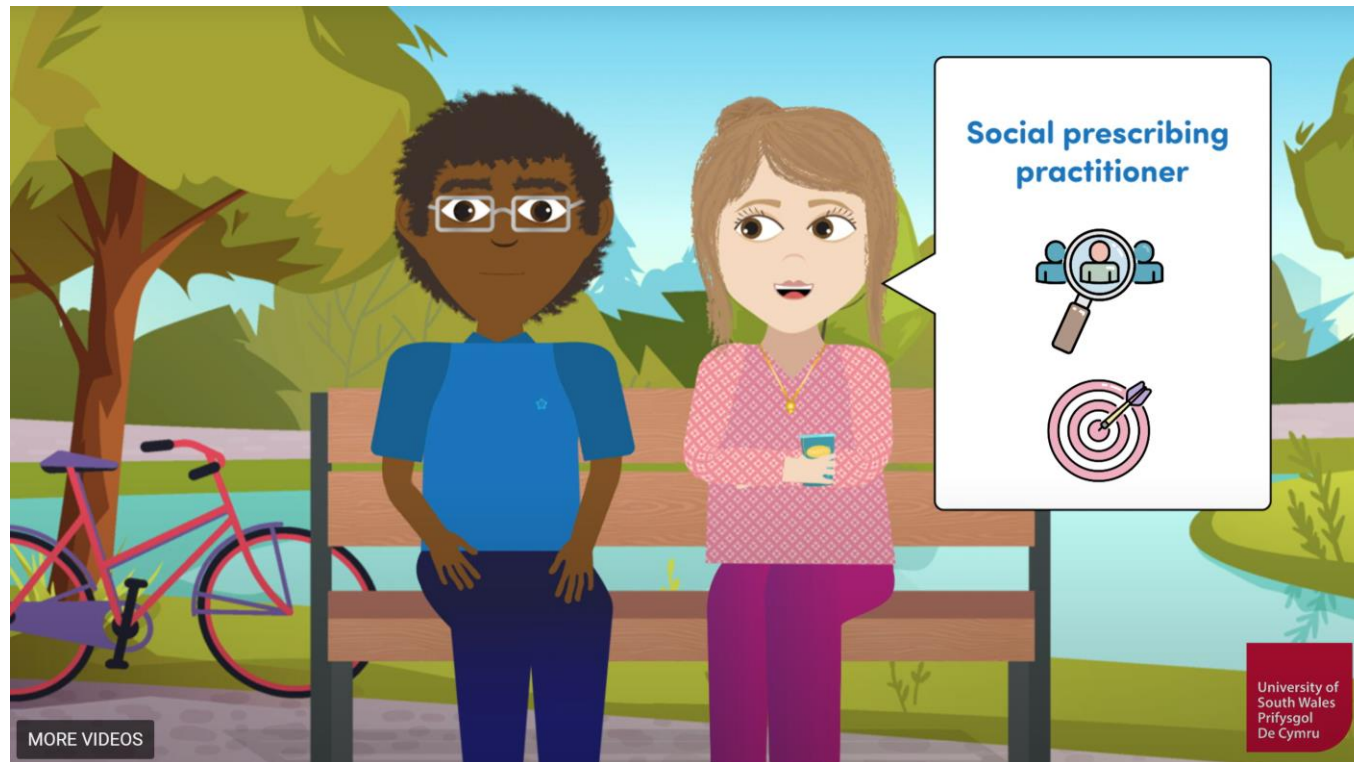
36 terms and accompanying information from the original professional facing



Data collection to keep glossary contents relevant

22 terms and accompanying information from the original professional facing – rewritten by LDW to make the descriptions more accessible to all.

Confused by social prescribing? We can help!



- Animation describing:
- Social prescribing
 - Terminology issues
 - How **splossary** can help
 - How to use **splossary**

- **Free to use but users are asked to register.**
 - Future iterations will likely be needed as the landscape evolves.
 - Website can facilitate the collection of data to:
 - Inform future updates.
 - Show how terminology usage differs across nations of the UK and within LA
 - Help demonstrate impact
- Website will also facilitate dissemination of updates.

Social prescribing terms

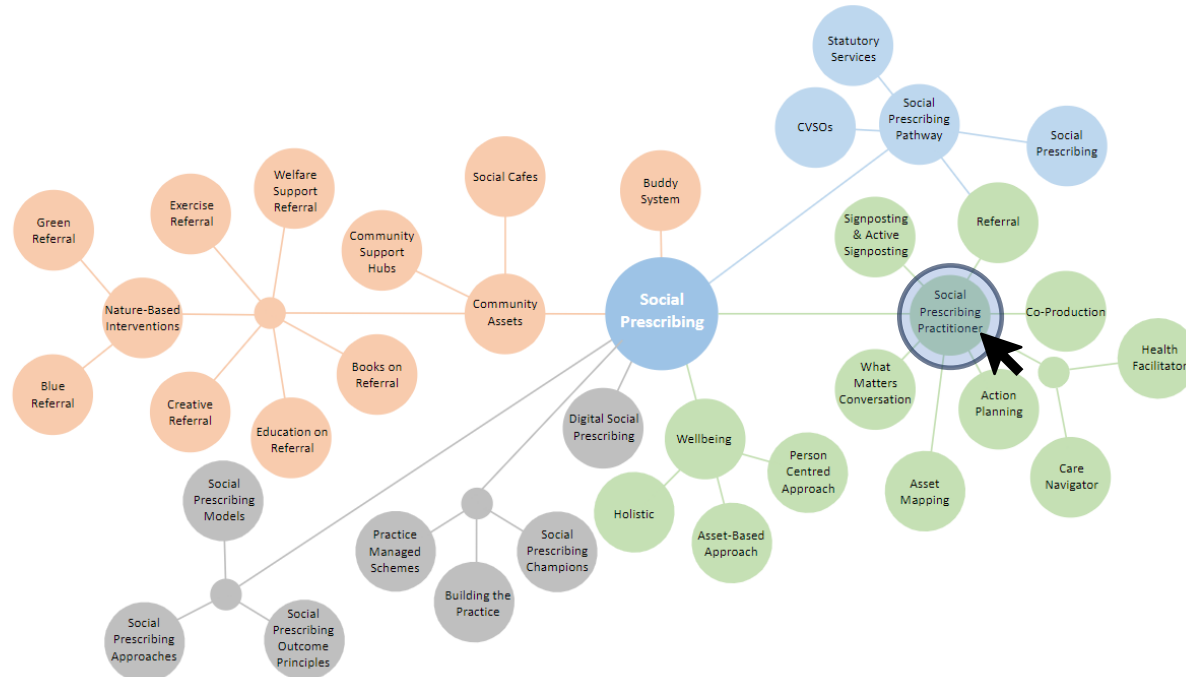
- [Action Planning](#)
- [Asset-Based Approach](#)
- [Asset Mapping](#)
- [Blue Referral](#)
- [Books on Referral](#)
- [Buddy System](#)
- [Building the Practice](#)
- [Care Navigator](#)
- [Community Assets](#)
- [Community Support Hubs](#)
- [Community & Voluntary Sector Organisations](#)
- [Co-Production](#)
- [Creative Referral](#)
- [Digital Social Prescribing](#)
- [Education on Referral](#)
- [Exercise Referral](#)
- [Green Referral](#)
- [Health Facilitator](#)
- [Holistic](#)
- [Nature-Based Interventions](#)
- [Person-Centred Approach](#)
- [Practice-Managed Scheme](#)
- [Referral](#)
- [Signposting and Active Signposting](#)
- [Social Cafes](#)
- [Social Prescribing](#)
- [Social Prescribing Approaches](#)
- [Social Prescribing Champion](#)
- [Social Prescribing Models](#)
- [Social Prescribing Outcome Principles](#)
- [Social Prescribing Pathway](#)
- [Social Prescribing Practitioner](#)
- [Statutory Services](#)
- [Welfare Support Referral](#)
- [Wellbeing](#)
- [What Matters Conversation](#)

- **Had to make some difficult decisions: NfSP consultation indicated that Social Prescribing is not a particularly well-liked term by the Welsh SP workforce.**
- **Multiple translations of Social Prescribing in Welsh**
 - Rhagnodi cymdeithasol = formal translation but not commonly used in practice.
 - Welsh policy and legislation have used the term ‘presgripsiynu cymdeithasol’
 - But ‘atgyfeiriad cymdeithasol’ which translates as ‘social referral’ is more commonly used within Welsh-speaking communities.

Social prescribing terms

- [Action Planning](#)
- [Asset-Based Approach](#)
- [Asset Mapping](#)
- [Blue Referral](#)
- [Books on Referral](#)
- [Buddy System](#)
- [Building the Practice](#)
- [Care Navigator](#)
- [Community Assets](#)
- [Community Support Hubs](#)
- [Community & Voluntary Sector Organisations](#)
- [Co-Production](#)
- [Creative Referral](#)
- [Digital Social Prescribing](#)
- [Education on Referral](#)
- [Exercise Referral](#)
- [Green Referral](#)
- [Health Facilitator](#)
- [Holistic](#)
- [Nature-Based Interventions](#)
- [Person-Centred Approach](#)
- [Practice-Managed Scheme](#)
- [Referral](#)
- [Signposting and Active Signposting](#)
- [Social Cafes](#)
- [Social Prescribing](#)
- [Social Prescribing Approaches](#)
- [Social Prescribing Champion](#)
- [Social Prescribing Models](#)
- [Social Prescribing Outcome Principles](#)
- [Social Prescribing Pathway](#)
- [Social Prescribing Practitioner](#)
- [Statutory Services](#)
- [Welfare Support Referral](#)
- [Wellbeing](#)
- [What Matters Conversation](#)

Mind Map

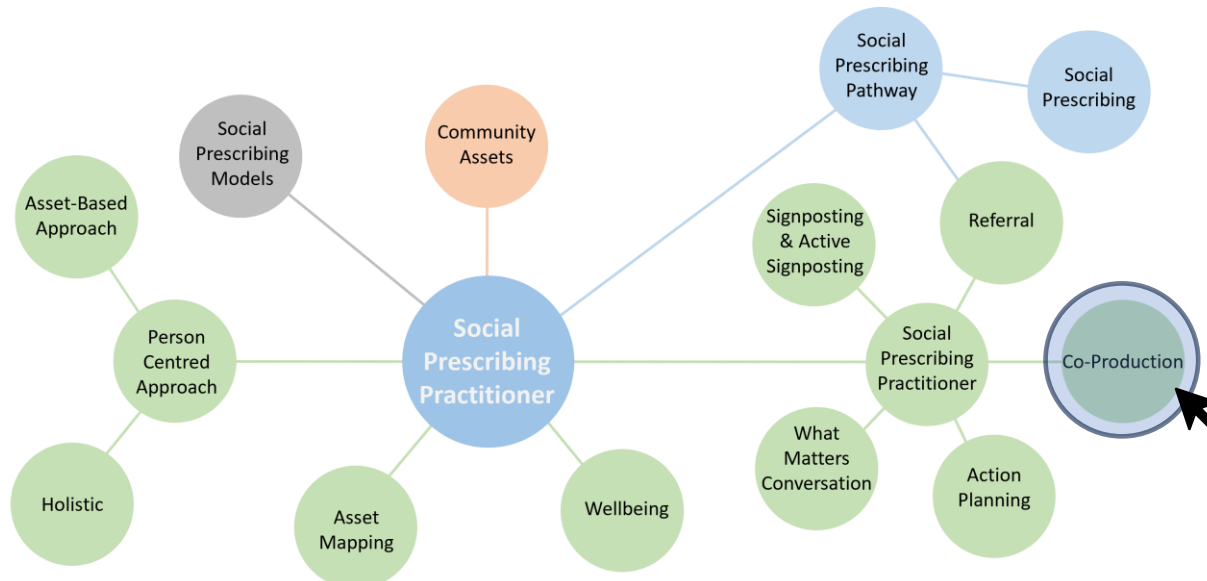


Social Prescribing Practitioner

Description: **Social prescribing practitioner** is an umbrella term for someone who assists individuals with identifying their non-medical needs through a [what matters conversation](#), and helps them to [co-produce](#) an [action plan](#) and access local [community assets](#), such as **groups, interventions or services**. If they identify a potential medical need they may also refer the individual to GP or pharmacist. The **Social prescribing practitioner** will work with individuals to find activities tailored to their preferences and needs, explore barriers and challenges to attending, and encourage ongoing participation. While there are preferred terms for the **social prescribing practitioner** role within sectors, they may also be known by a variety of terms that can be specific to the organisation in which they work. **Social prescribing practitioners** can be employed by a range of different organisations, such as local authorities, health boards or [Community & Voluntary Sector Organisations](#).

Alternative Terms: **Community connector** ^{CVSO}, **community coordinator** ^{SC}, community health champion, community link officer, community links practitioner, **community navigator** ^{CVSO}, facilitator, health adviser, health broker, health connectors, link coordinator, **link worker** ^{HC}, **local area coordinator** ^{SC}, **local asset coordinator** ^{SC}, non-medical link worker, referral agent, referral worker, referrer, social prescriber, social prescribing coordinator, social prescription officer, wellbeing advisor, wellbeing community coordinator, wellbeing coordinator, wellbeing links advisor, wellbeing worker.

Connected Terms: [Action planning](#), [asset-based approach](#), [active signposting](#), [asset mapping](#), [care navigator](#), [community assets](#), [co-production](#), [health facilitator](#), [holistic](#), [person-centred approach](#), [referral](#), [social prescribing models](#), [social prescribing pathway](#), [wellbeing](#), [what matters conversation](#).



Social Prescribing Practitioner

Description: **Social prescribing practitioner** is an umbrella term for someone who assists individuals with identifying their non-medical needs through a [what matters conversation](#), and helps them to [co-produce](#) an [action plan](#) and access local [community assets](#), such as **groups, interventions or services**. If they identify a potential medical need they may also refer the individual to GP or pharmacist. The **Social prescribing practitioner** will work with individuals to find activities tailored to their preferences and needs, explore barriers and challenges to attending, and encourage ongoing participation. While there are preferred terms for the **social prescribing practitioner** role within sectors, they may also be known by a variety of terms that can be specific to the organisation in which they work. **Social prescribing practitioners** can be employed by a range of different organisations, such as local authorities, health boards or [Community & Voluntary Sector Organisations](#).

Alternative Terms: **Community connector** ^{CVSO}, **community coordinator** ^{SC}, community health champion, community link officer, community links practitioner, **community navigator** ^{CVSO}, facilitator, health adviser, health broker, health connectors, link coordinator, **link worker** ^{HC}, **local area coordinator** ^{SC}, **local asset coordinator** ^{SC}, non-medical link worker, referral agent, referral worker, referrer, social prescriber, social prescribing coordinator, social prescription officer, wellbeing advisor, wellbeing community coordinator, wellbeing coordinator, wellbeing links advisor, wellbeing worker.

Connected Terms: [Action planning](#), [asset-based approach](#), [active signposting](#), [asset mapping](#), [care navigator](#), [community assets](#), [co-production](#), [health facilitator](#), [holistic](#), [person-centred approach](#), [referral](#), [social prescribing models](#), [social prescribing pathway](#), [wellbeing](#), [what matters conversation](#).

Please tell us your preferred term of use

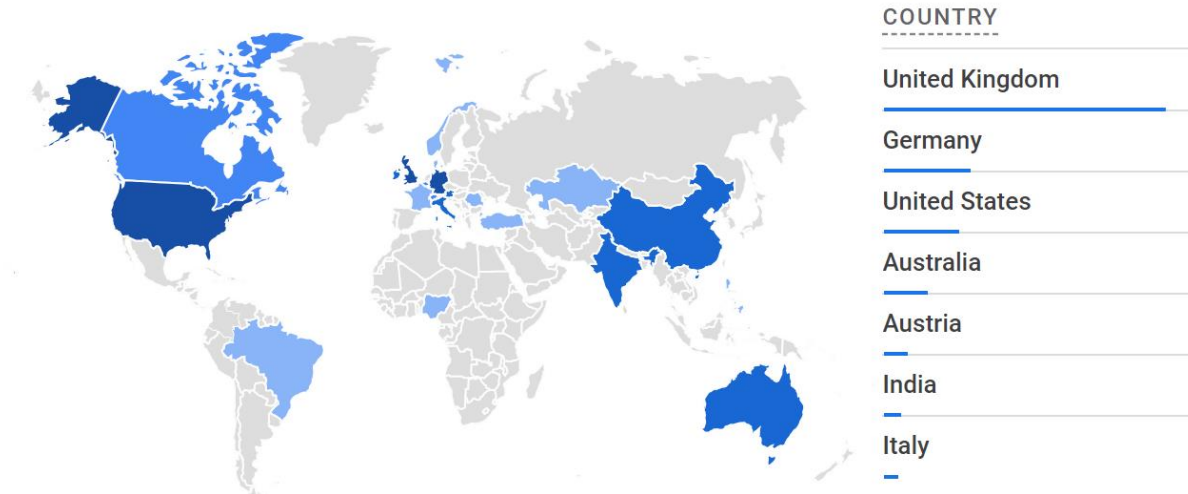
Logged in as [snewstead](#). [Edit your profile](#). [Log out?](#) Required fields are marked *

Please enter your desired term/s in the space provided and press the send button.

Send

Uses

- We hope that the glossary will provide an informative reference tool for the social prescribing workforce, commissioners, policymakers and the general public, (both within Wales and beyond).
 - Improve understanding & facilitate the standardisation of social prescribing terminology.
 - Used to inform language in policy, legislation, job descriptions, grant applications etc.
 - Website: capture data to ensure future relevance and disseminate updates.



References

- Newstead S, Wallace C, Jenkins B, Lavans A, Jesurasa A. (2023). A glossary of terms for social prescribing in Wales. Public Health Wales, Wales School for Social Prescribing Research & University of South Wales. phw.nhs.wales/services-and-teams/primary-care-division/social-prescribing/glossary-of-terms/ 21
- Welsh Government (2024). National framework for social prescribing. <https://www.gov.wales/sites/default/files/pdf-versions/2024/1/2/1705399866/national-framework-social-prescribing.pdf>
- **Newstead, S.,** Wallace, C., Jenkins, B., Lavans, A. & Jesurasa, A. (2023). Words and Terms Used in Social Prescribing - An easy-read guide to hard words and terms. Learning Disabilities Wales, Wales School for Social Prescribing Research, University of South Wales. <https://doi.org/10.60485/m8a6-xc23>
- **Newstead, S.,** Jenkins, B., Lavans, A., Jesurasa, A. & Wallace, C. (2023). Identifying and classifying social prescribing terminology in Wales - A group concept mapping study. Wales School for Social Prescribing Research, University of South Wales. <https://doi.org/10.60485/8c1h-kw75>
- **Newstead, S.,** Elliott, M., Cavanagh, D., Tetlow, S., & Wallace, C. (2023). Speaking the same language - a scoping review to identify the terminology associated with social prescribing. Primary health care research & development, 24, e67. <https://doi.org/10.1017/S1463423623000567>
- **Newstead, S.,** Jesurasa, A., Jenkins, B., Lavans, A., Woodall, A., & Wallace, C. (2024). Speaking the same language - The development of a glossary of terms for social prescribing in Wales. International Journal of Integrated Care.
- Tetlow, S., **Newstead, S.,** Wallace, C. (2024). Glossary of Terms – A Scoping Review. Wales School for Social Prescribing Research. <https://doi.org/10.60485/cv0s-sy31>

simon.newstead@southwales.ac.uk

