

# WORKING WITH ROSACEA

ELIZABETH KING & DR SANDRA JOHANSSON

WELEDA



# OUR PURPOSE

Unfolding health and beauty  
for body, soul and spirit  
in harmony with nature and the human being

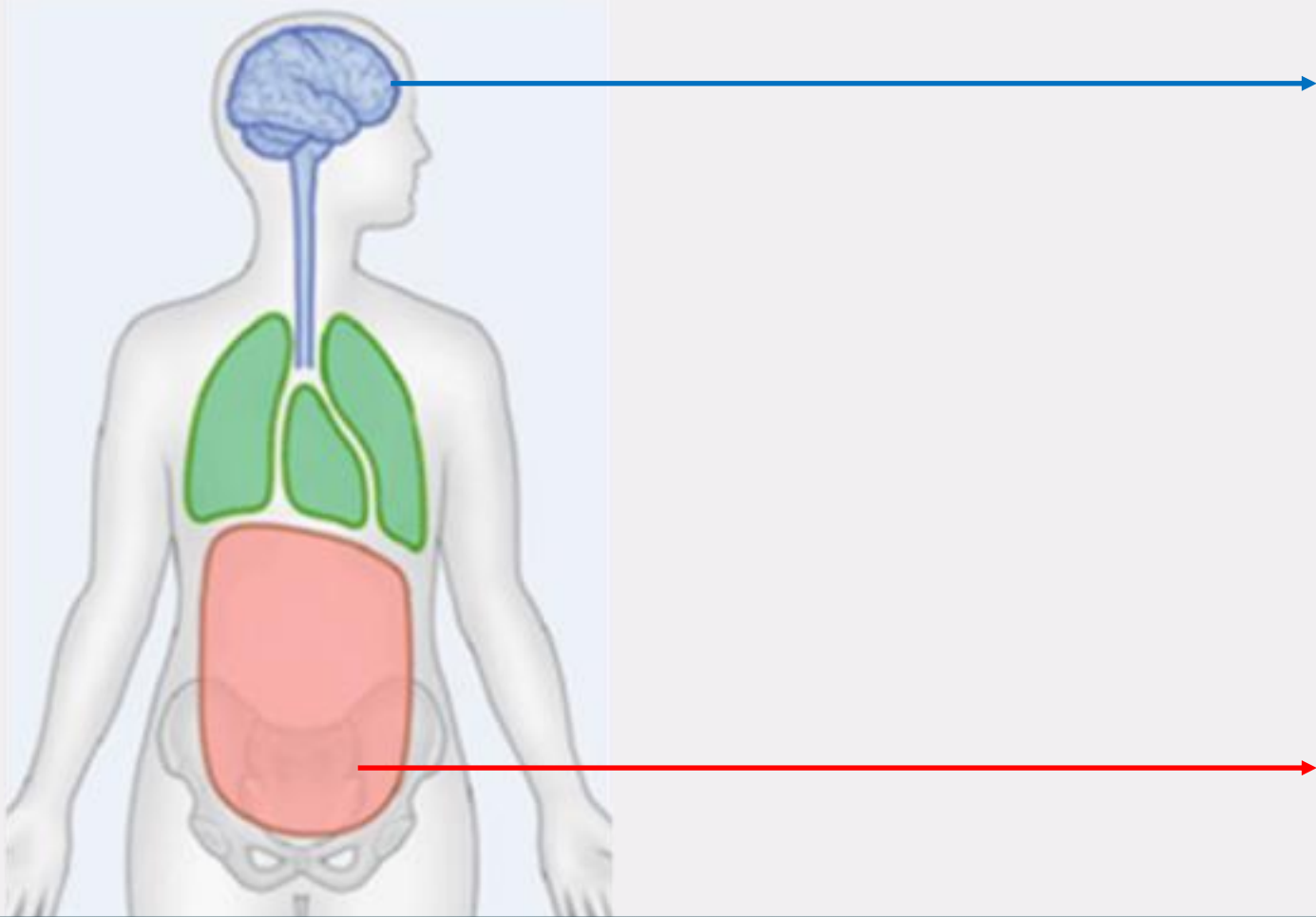
WELEDA



# Holistic view of the skin



# DOMINANCE / WEAKNESSES

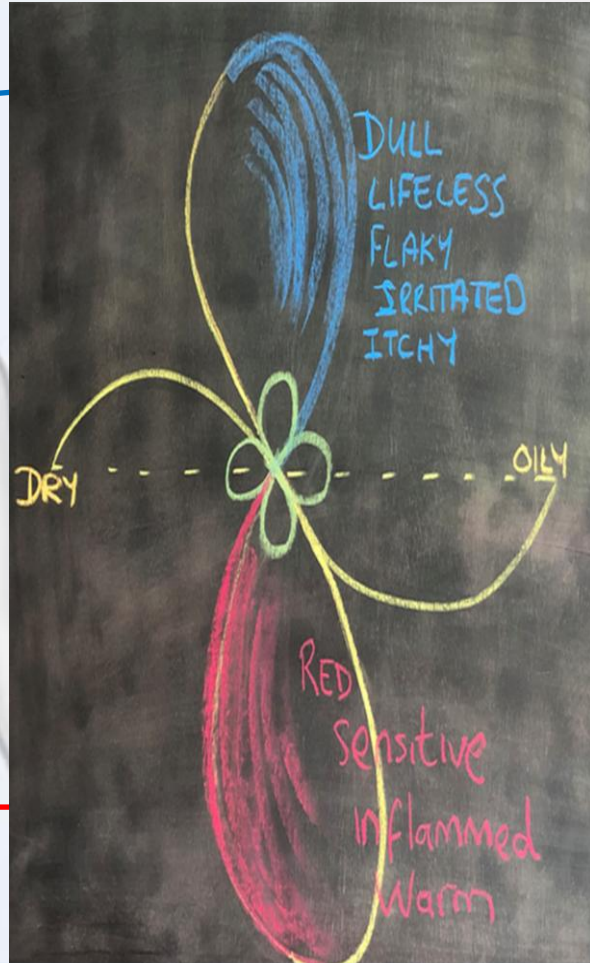
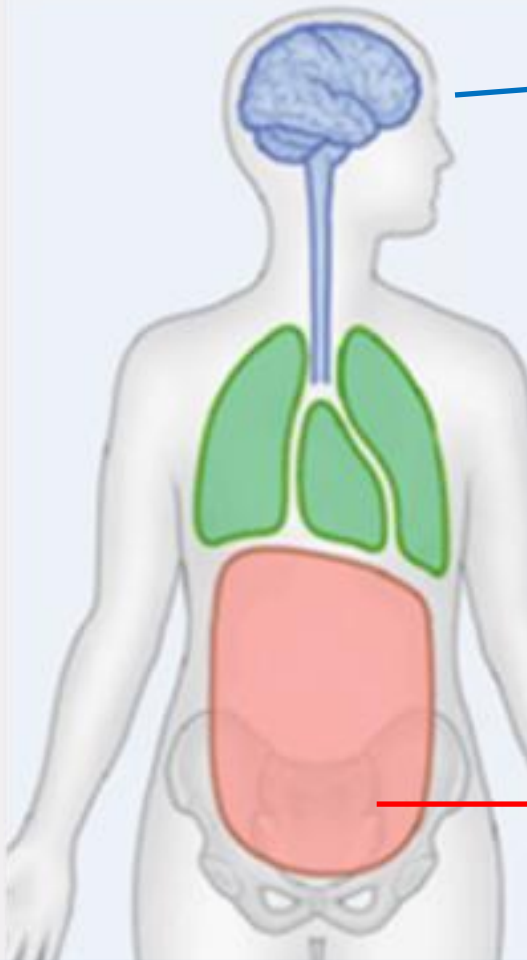


WELEDA



# DOMINANCE / WEAKNESSES

WELEDA

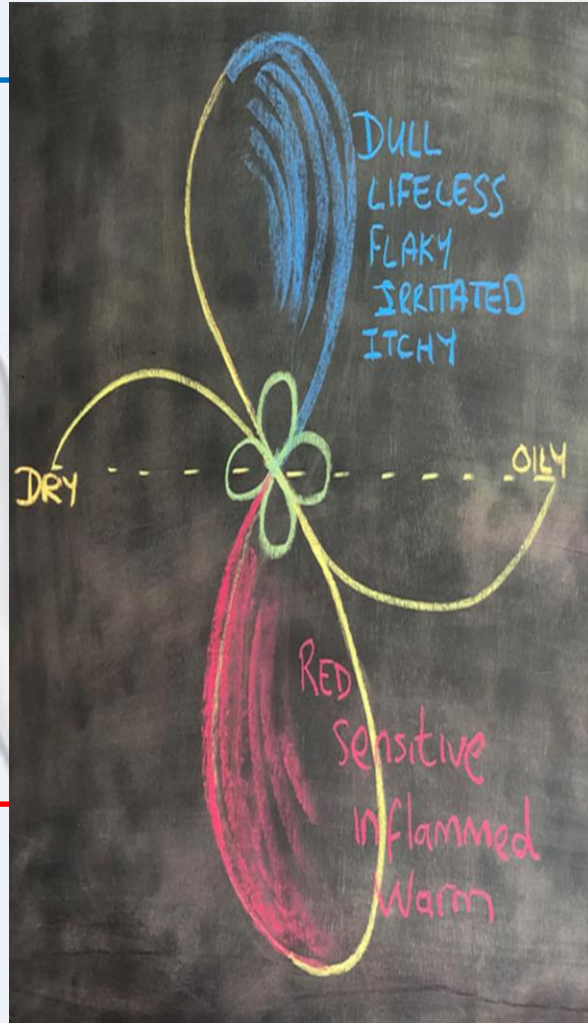
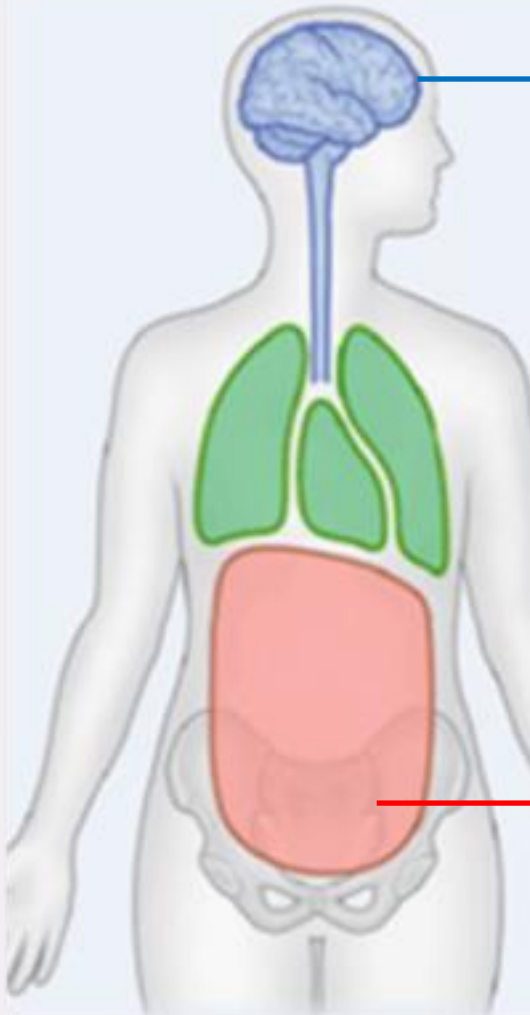


pierrefabreeczemaafoundation.org



harleyacademy.com





## Erythematotelangiectatic rosacea

This type of rosacea is linked to redness in face, visible blood vessels, and flushing. Some signs include:

- Swollen skin
- Sensitive skin
- Burning skin
- Dry, scaly skin

[prnvision.com](http://prnvision.com)

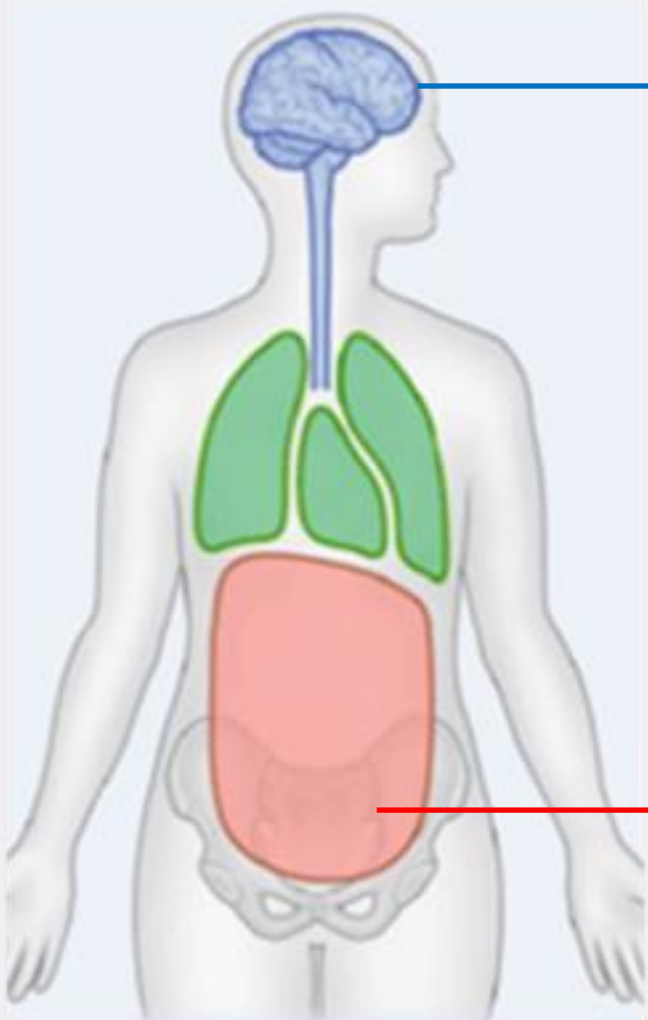


## Papulopustular rosacea

This is the most common type of rosacea. This type is connected to acne-like breakouts. More signs include:

- Red skin & acne-line breakouts
- Oily skin
- Raised patches of skin
- Sensitive skin
- Broken & visible blood vessels

[prnvision.com](http://prnvision.com)

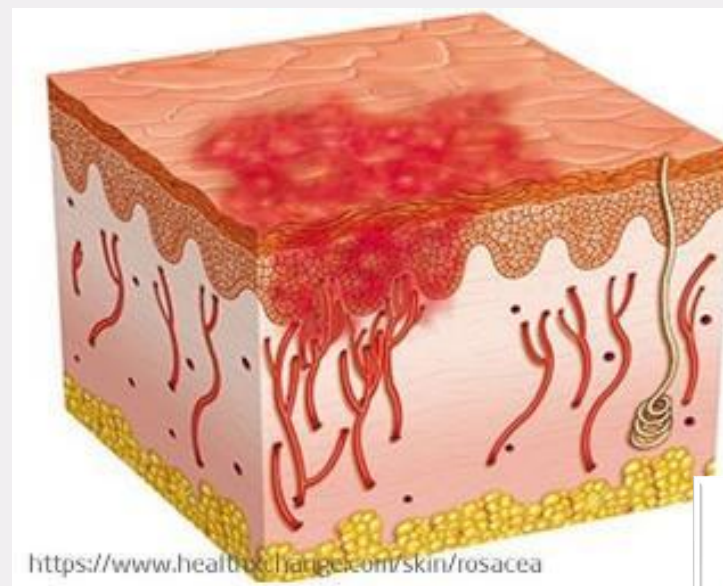


## Erythematotelangiectatic rosacea

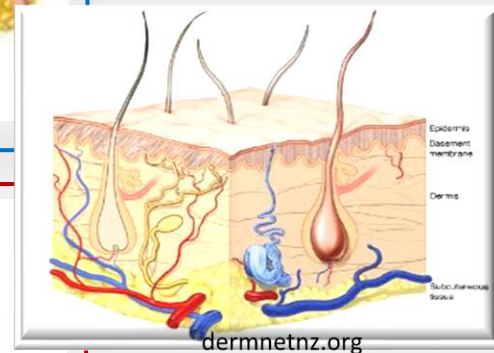
This type of rosacea is linked to redness in the face, visible blood vessels, and flushing. Some signs include:

- Swollen skin
- Sensitive skin
- Burning skin
- Dry, scaly skin

prnvision.com



<https://www.healthyliving.com/skin/rosacea>



dermnetz.org

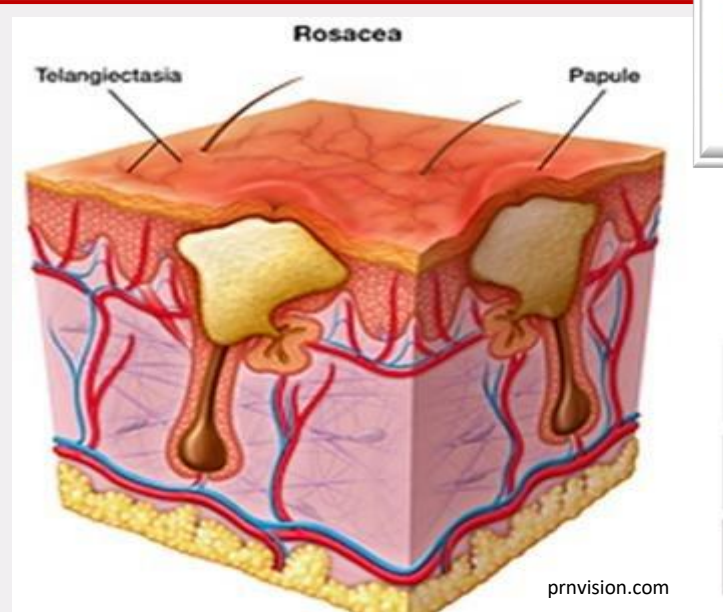


## Papulopustular rosacea

This is the most common type of rosacea. This type is connected to acne-like breakouts. More signs include:

- Red skin & acne-like breakouts
- Oily skin
- Raised patches of skin
- Sensitive skin
- Broken & visible blood vessels

prnvision.com



prnvision.com





Restoring  
rhythm  
with rhythm





# ROSACEA CASE STUDY



## CASE STUDY PRESENTATION: TREATING ROSACEA

Evidencing the role and effect of our anthroposophic-based Rhythmic Activation facial massage technique and Weleda's preparations for the treatment of rosacea

### ROSACEA TREATMENT PROTOCOL - GENERAL GUIDANCE



# TREATMENT THREE

WELEDA

4 WEEKS LATER



# KEY PREPARATIONS FOR HOME CARE

WELEDA



# TREATMENT FIVE

8 WEEKS LATER

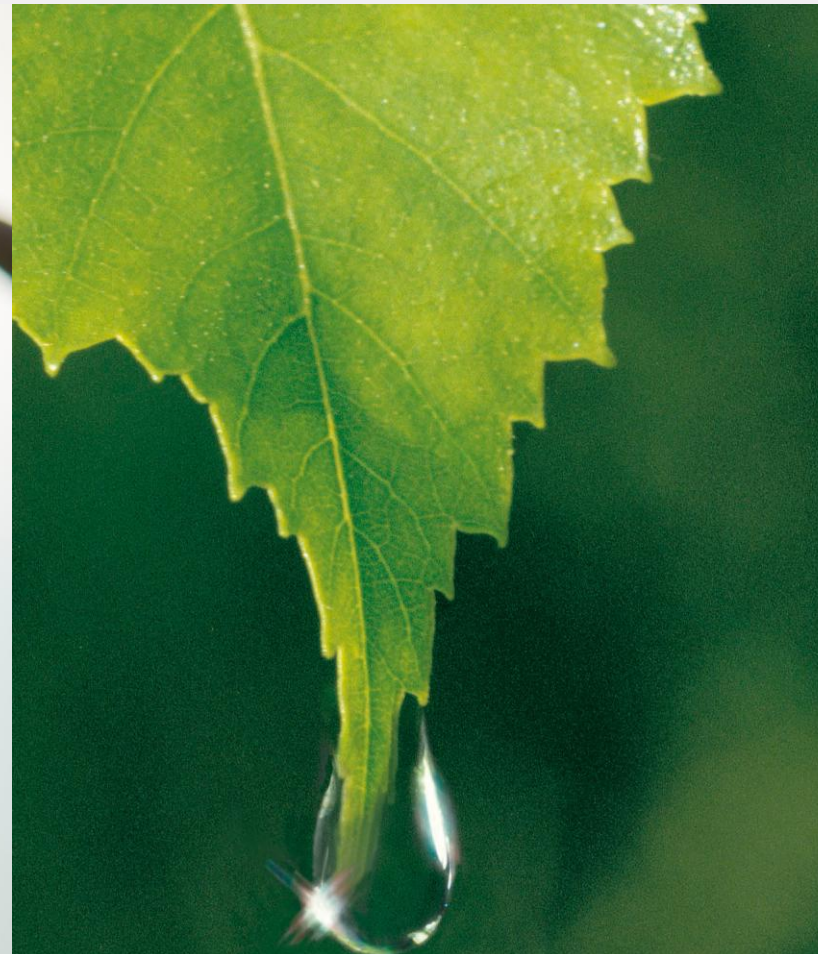
WELEDA



# INTERNAL SUPPORT – BIRCH JUICE

WELEDA

WITH ORGANIC BIRCH LEAF EXTRACT



# INTERNAL SUPPORT: FRAGARIA / VITIS

WELEDA

STRAWBERRY LEAVES (FRAGARIAVESCA) + GRAPEVINE LEAVES (VITIS VINIFERA)



# SUBSTANCES WITH POLAR QUALITIES : MODELS FOR HEALTHY FUNCTIONING

WELEDA

- Individual, starting substances.
    - Wild strawberry leaves: flavonoids & antioxidants
    - Grape leaves :astringent
  - Synergistic effects:
    - interaction of the polarities
    - pharmaceutical process that combines them
- supporting the liver function
- The organism can orient itself on them and regain its balance through self-regulation
- ❖ A healthy functioning liver helps clear toxins from the body and supports normal sleep

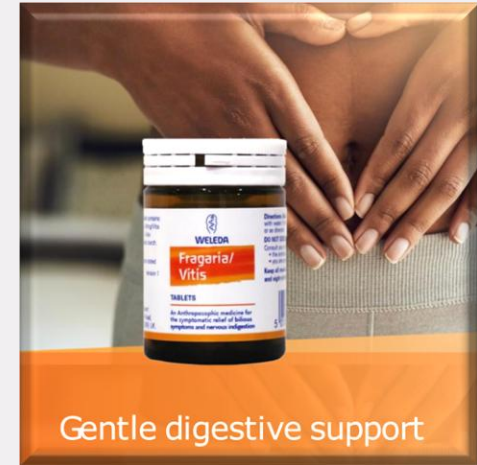


# INTERNAL SUPPORT: FRAGARIA / VITIS

RESEARCH

-IN VITRO

## WELEDA



- 100% natural ingredients,
- no interaction with liver enzymes (drug metabolism)
- signs of possible liver dysfunction: general un-wellness, waking between 2-4am, gastric disturbance, constipation, fatigue, congestion, skin disorders
- do not take if you are sensitive or allergic to wheat starch or strawberries (*Fragaria vesca*) or other ingredients
- do not use if pregnant/breastfeeding

Directions: Adults: 1 tablet to be chewed three times daily, before meals.

Ingredients: *Fragaria vesca*, Folium sicc. 40 mg / *Vitis vinifera*, Folium sicc. 40 mg.

Other ingredients: Lactose monohydrate, wheat starch, calcium behenate.

Suitable for Vegetarians **V**

**PLR 0298/5519**

**Size: 80 Tablets**

**The information contained on this sheet is for training purposes only and is not intended to replace the advice of a qualified Healthcare Practitioner.**

WELEDA



# THANK YOU

Elizabeth King  
[elizabeth.king@weleda.co.uk](mailto:elizabeth.king@weleda.co.uk)

Sandra Johansson  
[Sjohansson@weleda.ch](mailto:Sjohansson@weleda.ch)

