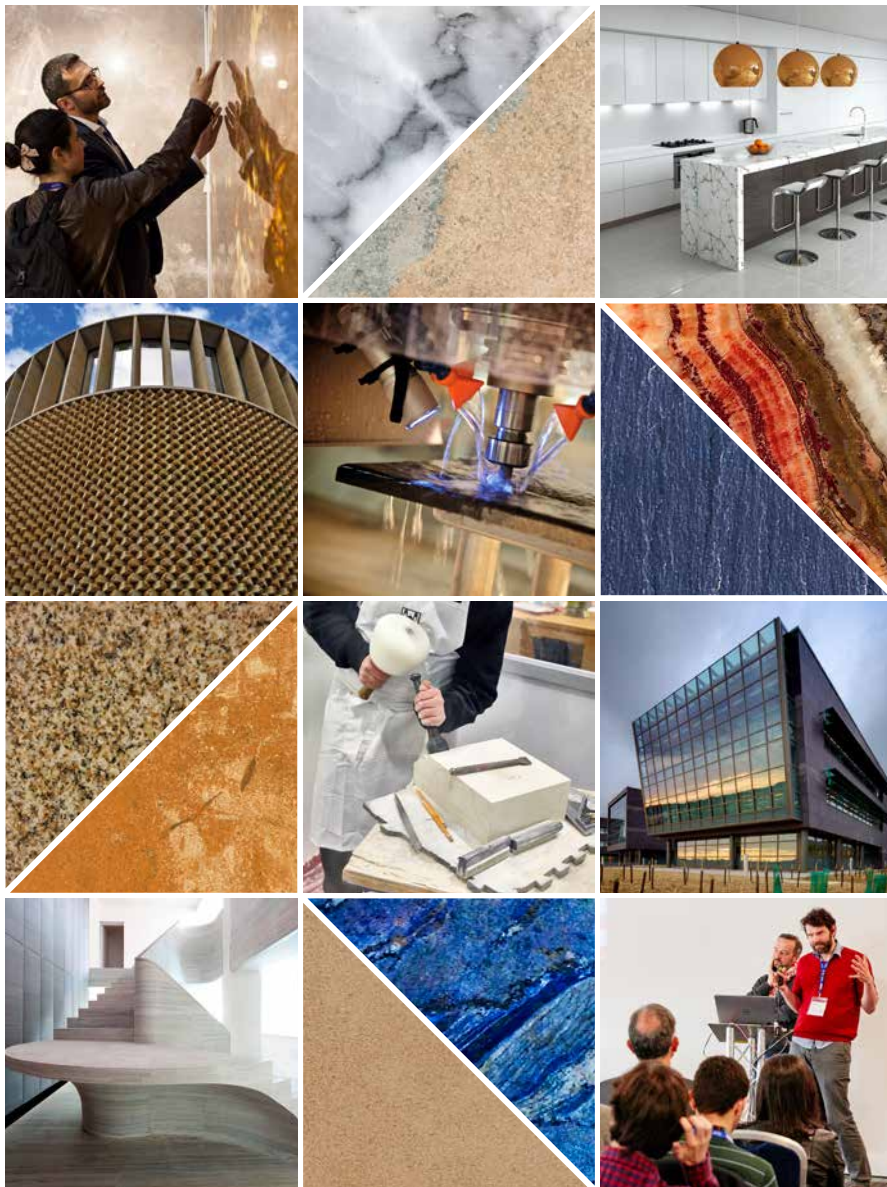


# the StoneShow 2025

The UK stone industry event | 3-5 June | EXCEL LONDON



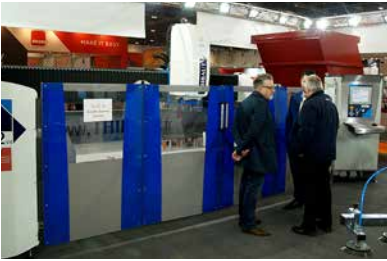
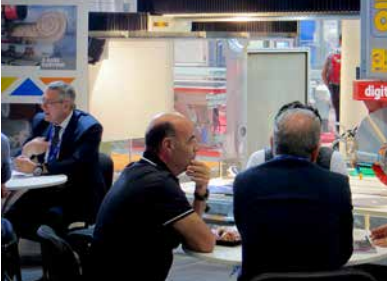
[stoneshow.co.uk](https://stoneshow.co.uk)

# The UK industry event for...

## British Stone



## Technology



## International suppliers

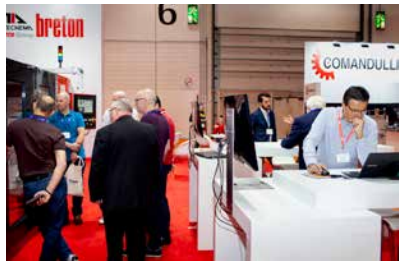


## Consumables





# Your route to market...



## & Innovation



Celebrating its 15<sup>th</sup> edition, the biennial Stone Show is the only UK exhibition dedicated to natural stone.

If your marketplace is stone slabs, tiling or block; CNC machinery; diamond tooling; the latest fixing systems; sealants; adhesives; cleaning materials or any other related product or service, then the Stone Show is the perfect platform to develop your business.

Located at ExCeL London in the Royal Docks area, the Show is at the centre of the largest construction zone in Europe. Benefit from major commercial, residential and retail developments recently approved including the £1.5 billion project to transform Silvertown Quays into London's innovation quarter and the £6 billion investment to convert Royal Albert Dock into the capital's next business district.

The show also hosts a plethora of visitor features to attract building professionals and key decision makers within the stone industry including The Stone Show Seminar Theatre featuring around 30, free-to-attend seminars; awards galleries; the Stone Federation

Village; a dedicated conservation area; and much more...

The long-anticipated opening of the Elizabeth Line has made it even easier, faster, and more convenient to visit ExCeL. With the UK's leading venue now having its own dedicated Elizabeth Line station, journey times will be cut by up to two thirds, with the resulting time saved leading to a significant increase in networking and commercial trade from delegates.

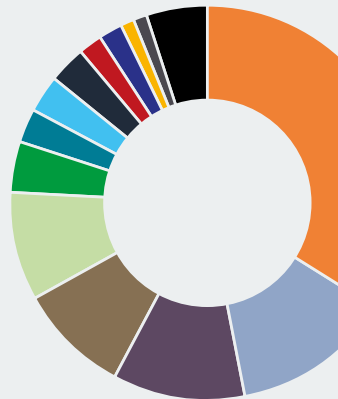
For ExCeL, visitors from central London will now be able to reach the venue in as little as 12 minutes; from Paddington (20 mins), Tottenham Court Road (15 mins), Farringdon (12 mins), Liverpool Street (10 mins), Whitechapel (9 mins) and Canary Wharf (3 mins).

If you serious about the UK market, the Stone Show offers exciting opportunities for exhibitors to pitch for new projects and find new distributors.

**Join us at the Stone Show**  
**3 - 5 June 2025.**

## Visitor Profile

Architects/Interior Designers/Developers/Clients	34%
Wholesalers/Importers/Distributors	13%
Stonemasons	11%
Fabricators (KBB)	9%
Retailers - Fireplace/Kitchen/Bathroom/Tile	9%
Machinery/Tool Manufacturers/Suppliers	4%
Memorial Masons/Wholesalers	3%
Quarry Operator/Quarrying	3%
Conservation/Heritage	3%
Landscape architect/Urban designers/Landscape planners	2%
Sculptors/Artists	2%
Local/Central Government/NGO	1%
Education/Training	1%
Others	5%



Official Supporters include:



**Stone Specialist**

**Stone Specialist.com**

**theStone review**

# Delivering high-quality visitors

The Stone Show is committed to providing an event experience that will educate, enrich & engage the visitor.

**Features include:**

**Architects' & Designers' guided tours** showcasing key exhibitors



## Natural Stone Awards Gallery & Industry Choice Award



Be inspired by award-winning stone projects. Organised by Stone Federation Great Britain, the Natural Stone Awards recognises projects which demonstrate exemplary design and execution of stonework. Displayed in a photographic gallery at the show, all the category award winners are impressive and outstanding examples of the contemporary use of stone in architecture. Visitors can also vote for the project they believe deserves the Industry Choice Award.



- 1 Chelsea Barracks, Phase IV, London
- 2 Elephant Springs, Elephant Park, London
- 3 Lenaboy, County Dublin, Ireland
- 4 The Fraternity, Carlisle Cathedral, Carlisle



**Networking lunches** bringing together leading building professionals

## Conservation Area

Stone plays a vital role in maintaining the built heritage of the country. Is there a stately home, important civil building or monument that does not include stone? Stone is also prevalent in many modest listed buildings and conservation areas. The sector has its own Conservation Area at the exhibition, co-ordinated by Historic England and supported by the Institute of Historic Building Conservation, The Institute of Conservation, The Society for the Protection of Ancient Buildings and the English Stone Forum. Free advice, case studies, forums and other online resources can be accessed to help visitors select the correct stone for building repair.



Historic England



**Stone Federation Village** providing specialist advice and training initiatives



the Natural  
**Stone**  
Seminar Theatre



the Natural  
**Stone**  
Seminar Theatre



the  
**StoneShow**  
Seminar Theatre

**30+ seminars**  
supported by key  
industry bodies

# Reserve your stand

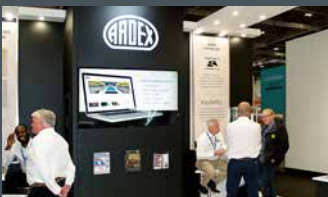
The Stone Show is now taking bookings for the 2025 exhibition



## Space Only

Floor space only is available for exhibitors wishing to design and construct their own stand

**£295 per m<sup>2</sup>**

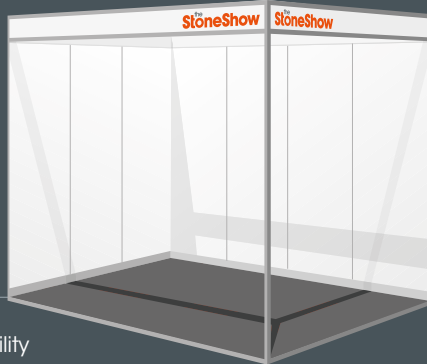


## Shell Scheme

This includes the stand construction, walls, company name board, a carpet and basic stand cleaning

**£340 per m<sup>2</sup>**

*Please note there is a 5 per cent premium for corner and island stands*



## Contact Details

For details of stand availability contact the Organisers on:

Tel +44 (0) 115 945 3897

E-mail [stoneshow@qmj.co.uk](mailto:stoneshow@qmj.co.uk)

[www.stoneshow.co.uk](http://www.stoneshow.co.uk)

The **QMJ** Group

The Stone Show 2025 is part of The QMJ Group that also owns *Stone Specialist* magazine, [stonespecialist.com](http://stonespecialist.com), the Stone Review, The UK Concrete Show and Hillhead.

**Stone  
Specialist**

**Stone  
Specialist.com**

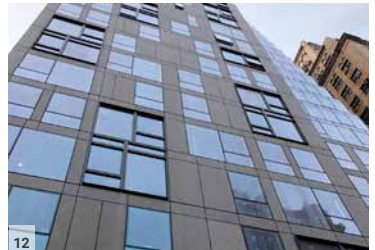
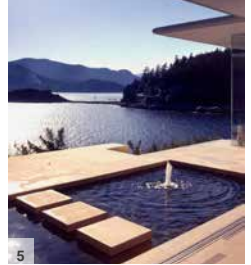
**theStone  
review**

**UKCS**  
The UK Concrete Show





# Projects from a selection of exhibitors



- |   |   |   |  |    |   |
|---|---|---|--|----|---|
| 1 | 8 Finsbury Circus, London<br>Portland Grove Whitbed Stone<br>from Albion Stone              | 5 | Private Villa, West Vancouver Canada<br>Santafora Piano Levigato Stone from Santafora              | 9  | Lancing College, Lancing England<br>Doulting Stone from Doulting Stone Quarry                             |
| 2 | King's Cross Station, London<br>Fine Grey Granite from Pardais Granites                     | 6 | King's Cross S2, London<br>Tuff Stone (a black volcanic lava stone from<br>Armenia) from AM Stone  | 10 | Private House, Spain<br>Phyllite JBernardos (Spanish slate) from<br>Naturpiedra JBernardos                |
| 3 | Fonthill Abbey, Tisbury England<br>Chicks Grove & Chilmark Stone from<br>Lovell Stone Group | 7 | Sultan Nazrin Shah Centre, Oxford<br>Clipsham Stone from Stamford Stone Company                    | 11 | Medieval Museum, Waterford Ireland<br>Stoke Ground Top Bed & Base Bed Bath Stone<br>from Bath Stone Group |
| 4 | Anzac Memorial Centenary Project, Sydney<br>Aurisina Fiorita Stone from Pizzul              | 8 | ME Hotel, London<br>Cwt-y-Bugail Dark Blue Grey and Penrhyn Heather<br>Blue Slate from Welsh Slate | 12 | Celeste Gramercy, New York<br>Arival Grey Limestone from Aridos Valdebezana                               |

# 2023 Exhibitors

## A

A.S.M. Tenax  
Abaco  
ABK Stone by  
Bloomstones London  
Achilli  
AlterEgo Facades  
Ansen Quartz Stone  
Aquafl Solutions  
Archiporcelain  
Arklam  
Artemistone  
Artisan Stone / Gwrhyd Quarry  
Ascale Tau  
Authentic Stone  
AVA Stone  
Avesta Stone

## B

Baroque Dogaltas Turizm  
Bath Stone  
Batu Marble  
BBS Brick and Stone  
BCC Stone  
Bestile  
Big Slabs by Nuovocorso  
Bloomstones London  
Bluesky Stone  
Brachot  
Breton  
By Fikri Stone

## C

Ceramiche Caesar  
Cicek Marble  
Cidiam Group  
Clay International  
CMG Macchine  
Comandulli Srl  
Costruzioni Meccaniche  
Donatoni  
Coverlam Top by Grespania  
Cunningham Masonry Cutting  
Machines

## D

D Zambelis  
Dal Forno  
Diamar  
Diatex  
Dimpomar  
Diresco  
Donatoni  
Doultong Architectural Stone

## E

Ecorok by Diamik Glass  
Emmedue Machinery  
English Stone Forum  
Erol Marble  
Etonsurfaces

## F

Ferrari & Cigarini UK  
Fila Surface Care Products  
Fontanili Marble UK  
Foshan Cera Power Ceramics

## G

G S Diamant  
Genex Stones London  
Gestra  
Giacomini  
GNT - Granitos do Norte  
Granite Slabs UK  
Guangdong Bosun Stone  
Guangzhou Vidastone

## H

Harrison Goldman  
Historic England  
Huazhong Stone

## I

Icon, The Institute of  
Conservation  
ICR Sprint

## IHBC

Ilpa  
Ina Natural Stone  
India Stonemart 2024  
Infinity - The Engineered Stone  
Integra Adhesives  
Italian Luxury Surfaces  
Italmec

## J

Johnston Quarry Group  
Julipetra

## K

Kar-Mar  
Keope Ceramiche  
KGF Granites  
Komurcuoglu Marble

## L

Leading Stone  
Lamar Ceramics  
Lapitec  
Lithofin  
LPE Group

## M

Mainstream Granite  
Malbros  
Manzelli  
Marmox UK  
Meridian Diamond Products  
Minestone Exports  
Modamar Marble  
Mora Stone International  
MP Treatment UK  
MPG  
MPG Stone  
MVC - Portuguese Limestones

## N

Natural Stone by Safa  
Natural Stone Concepts  
Nicolai Diamant  
Nikolaus Bagnara  
Noble Stone  
Northern Precision

## O

O.M.G.M. Bellani  
OMAG  
On Point Engineering  
Onur Marble  
Optidrive  
Ozerler Marble

## P

Pardais Granites  
Paving Stock  
Peakson Quartz Surface  
Pentagon Tiles  
Piano Tile  
Pikaro Hand Made Tiles  
Planet Granite  
Polycor  
Portland Sculpture & Quarry Trust  
Premium Marbles & Granites  
Prodim

## Q

Quarella

## R

Rayon Stone Spain  
Rielli Giancarlo

## S

Saint Astier  
SAIT  
Sandberg  
Simaflex  
Sirius Stone

Skarlis Marble  
Slabsmith  
Society for the Protection of  
Ancient Buildings (SPAB)  
Sorkun Marble  
Spectra Stone  
SRB Group  
Stamford Stone Company  
Stone Care Europe  
Stone Cladding Systems  
Stone Factory  
Stone Federation Great Britain  
Stone Gallery from Valencian  
Region to the World  
Stone Italiana  
Stone Profit Systems  
Stonegate Precision Tooling  
Stylib  
Sundstrom Safety  
Summer Marble

## T

Terra Natural  
Terzago Macchine  
Thibaut  
Tile & Stone Journal  
Tiling Logistics

## U

Ugr Ugur Hidrolik  
& Pnomatik Makine  
UK Solmar  
Usel Makine

## V

Vetro Tooling  
VSM Abrasives

## W

Waters Group  
Wharf Worktops  
Wodiam  
Worktop Fabricators Federation

## X

Xiamen Boss  
Xiamen Kunma  
Xiamen Maixee  
Xiamen New Europe  
Xiamen Yoyo Stone

## Z

Zenith

# The Venue

# EXCeL LONDON



## The venue

Located in London's Royal Docks, ExCeL is part of a 100-acre campus, including three on-site DLR stations, eight on-site hotels and numerous bars & restaurants. [www.excel-london.co.uk](http://www.excel-london.co.uk)



## Rail, Elizabeth Line & DLR

ExCeL is on the DLR (Docklands Light Railway) and Elizabeth Line. Alight at Custom House station to enter ExCeL via the West Entrance, or Prince Regent station for the East Entrance.

For national train enquiries and to order advance tickets visit [www.nationalrail.co.uk](http://www.nationalrail.co.uk)



## Cable car

From the O2 visitors can use the IFS Cloud Cable Car for the quick 5-minute connection to ExCeL London. [tfl.gov.uk/modes/london-cable-car/](http://tfl.gov.uk/modes/london-cable-car/)



## Road

Follow signs for Royal Docks, City Airport and ExCeL. There is easy access from the M25, M11, A406 and A13. ExCeL is not located in the Congestion Charge zone but it is with the Low Emission Zone, visit [tfl.gov.uk/modes/driving/low-emission-zone](http://tfl.gov.uk/modes/driving/low-emission-zone) to check your vehicle and whether any charges may apply. For Sat Nav purposes use postcode E16 1FR. 1,800 car parking spaces are available on-site.



## Air

Use London City Airport (LCY), whenever possible. Located 5-minutes from ExCeL by taxi or 10-minutes by DLR, the airport offers 350 flights per day, from 46 international destinations. [www.londoncityairport.com](http://www.londoncityairport.com)



## Carbon footprint

Car sharing reduces the show's carbon footprint, so please try to travel with colleagues or take public transport!



## Accommodation

The ExCeL campus boasts an impressive eight hotels meaning a good night's sleep is never more than just a few minutes' walk from the exhibition. Hotels include the budget Ibis and Premier Inn; mid-range Novotel and DoubleTree by Hilton; luxury Crown Plaza and Aloft London ExCeL; and even a floating hotel, the Sunborn London.



## Open times

Tuesday 3 June	9.00 – 17.00
Wednesday 4 June	9.00 – 17.00
Thursday 5 June	9.00 – 16.00



## Information

Information on all aspects of the show is available from [www.stoneshow.co.uk](http://www.stoneshow.co.uk)

The Stone Show is a

## Stone Specialist

event and part of

## The QMJ Group

7 Regent Street  
Nottingham, NG1 5BS  
+44 (0) 115 945 3890  
[stoneshow@qmj.co.uk](mailto:stoneshow@qmj.co.uk)

The Stone Show is strictly for the trade and building professionals only, with no under 16s admitted to the exhibition.

