

# the Stone Show & hard surfaces 2025

co-located  
with



The UK Stone and Hard Surfaces Industry Event

7-9 May

**excel**  
LONDON



[www.stoneshow.co.uk](http://www.stoneshow.co.uk)

# The UK industry event for...

## British Stone



## Technology



## International suppliers



## Consumables

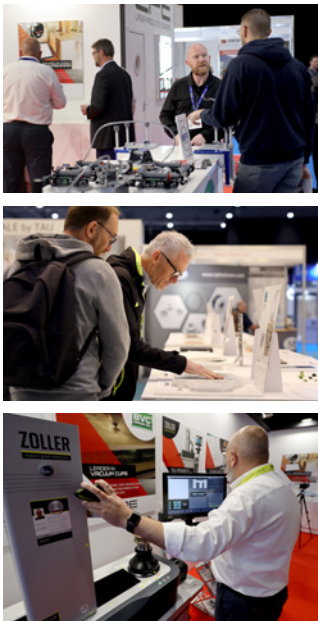




# Your route to market, all under one roof at ExCeL, London



## & Innovation



The Stone Show & Hard Surfaces returns for its 15<sup>th</sup> edition with a larger, higher-value audience than ever before...

You'll continue to benefit from being part of the market leading event for the sector with over 25 years of industry expertise, but also be co-locating with UK Construction Week for the first time. This new partnership with Media10 (organisers of Clerkenwell Design Week), will put the Stone Show & Hard Surfaces alongside the largest construction show in London, welcoming more than 25,000 trade visitors across 3 show days. Connect your business with a vast, high-quality community of building professionals and allow it to benefit both from our specialist focus, and a wider construction event that delivers 300+ seminars, 20+ live demonstrations and 400+ exhibitors.

The Stone Show & Hard Surfaces will retain its unique focus with its own dedicated marketing and independent visitor registration; an insightful seminar programme; awards for the latest emerging industry talent; The Industry

Choice Award for best stone project from the last 18 months; and networking events for groups such as the Women In Natural Stone, and architects in stone.

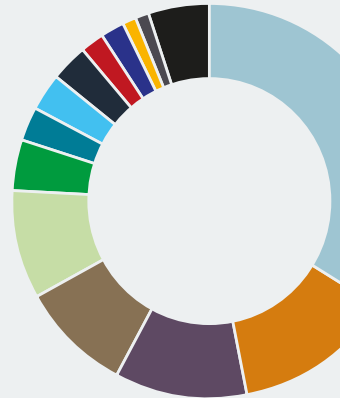
Working closer than ever before with key industry partners such as Stone Federation Great Britain, Worktop Fabricators Federation, RIBA and Historic England, the Stone Show spans across the full breadth of the UK masonry marketplace, from design & specification, to working & maintenance.

If your marketplace is stone slabs, tiling or block; ceramic, porcelain, engineered quartz, ultra compact surfaces (UCS) or sintered stone; CNC machinery; diamond tooling; the latest fixing systems; sealants; adhesives; cleaning materials or any other related products and services, then the Stone Show and Hard Surfaces is for you.

**Join us at ExCeL, London, 7 - 9 May 2025**

## Visitor Profile

Architects / Interior Designers / Developers / Clients	33%
Wholesalers / Importers / Distributors	13%
Stonemasons	11%
Fabricators (KBB)	10%
Retailers - Fireplace / Kitchen / Bathroom / Tile	9%
Machinery / Tool Manufacturers / Suppliers	4%
Memorial Masons / Wholesalers	3%
Quarry Operator / Quarrying	3%
Conservation / Heritage	3%
Landscape architect / Urban designers / Landscape planners	2%
Sculptors / Artists	2%
Local / Central Government / NGO	1%
Education / Training	1%
Others	5%



Official Supporters include:



Historic England



**Stone Specialist**

**Stone Specialist.com**

# Inspiring high-quality visitors

The Stone Show and Hard Surfaces is committed to providing an event experience to inspire, educate and enrich the visitor.

**Show features include:**

## Natural Stone Awards Gallery & Industry Choice Award

Displaying award winning stone projects, from the Stone Federations' latest awards.



Stone & Hard Surfaces

Emerging Talent Award

2025



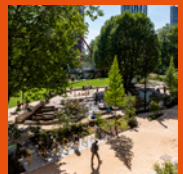
## Stone Federation Village

Highlighting members of the UK's largest federation of stone suppliers. Serving as a hub offering specialist advice and training initiatives.



## The British Stone Showcase

Featuring a variety of stunning unique dimensional stone, quarried in the British aisles.



## Emerging Talent Awards

Recognising and rewarding those at the beginning of their careers, whilst shining a spotlight on organisations promoting the next generation of talent.



## 20+ CPD Accredited Seminars



# Reserve your stand

The Stone Show and Hard Surfaces is now taking bookings for the 2025 event.



## Space Only

Floorspace only, for exhibitors who wish to design and build their own stand space, including electricity fixtures and fittings.

**£315 per m<sup>2</sup>**

## Shell Scheme

Includes walls, carpet, a nameboard and stand cleaning. Please note, a charge of 5% is applicable to corner and island stands

**£360 per m<sup>2</sup>**



## Contact Details

For details of stand availability contact the Organisers on:  
Direct Direct: +44(0)115 865 8283  
WhatsApp: +44(0) 7969 813 250  
Email: [stoneshow@qmj.co.uk](mailto:stoneshow@qmj.co.uk)  
Web: [stoneshow.co.uk](http://stoneshow.co.uk)

## Stone Show media

The Stone Show & Hard Surfaces are brought to you by the owners of Stone Specialist Magazine, [Stonespecialist.com](http://Stonespecialist.com), the Stone Review and Stone Bulletin newsletter.

**Stone  
Specialist**

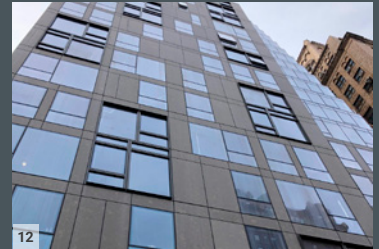
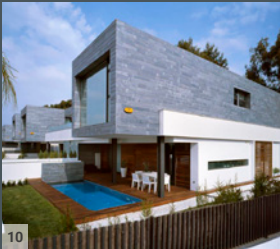
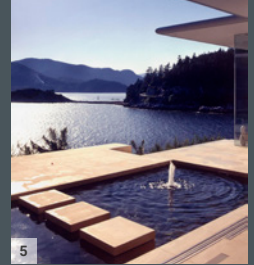
**Stone  
Specialist.com**

**Stone  
Bulletin**

**theStone  
review**



# Projects from a selection of exhibitors



1 8 Finsbury Circus, London  
Portland Grove Whitbed Stone  
from Albion Stone

2 King's Cross Station, London  
Fine Grey Granite from Pardais Granites

3 Fonthill Abbey, Tisbury England  
Chicks Grove & Chilmark Stone from  
Lovell Stone Group

4 Anzac Memorial Centenary Project, Sydney  
Aurisina Fiorita Stone from Pizzul

5 Private Villa, West Vancouver Canada  
Santafiora Piano Levigato Stone from Santafiora

6 King's Cross S2, London  
Tuff Stone (a black volcanic lava stone from  
Armenia) from AM Stone

7 Sultan Nazrin Shah Centre, Oxford  
Clipsham Stone from Stamford Stone Company

8 ME Hotel, London  
Cwt-y-Bugail Dark Blue Grey and Penrhyn Heather  
Blue Slate from Welsh Slate

9 Lancing College, Lancing England  
Doulting Stone from Doulting Stone Quarry

10 Private House, Spain  
Phyllite JBernardos (Spanish slate) from  
Naturpiedra JBernardos

11 Medieval Museum, Waterford Ireland  
Stoke Ground Top Bed & Base Bed Bath Stone  
from Bath Stone Group

12 Celeste Gramercy, New York  
Arival Grey Limestone from Aridos Valdebezana

# 2023 Exhibitors

## A

A.S.M. Tenax  
Abaco  
ABK Stone by Bloomstones  
London  
Achilli  
Aquafile Solutions  
Archiporcelain  
Artemistone  
Ascale Tau  
Authentic Stone  
AVA Stone  
Avesta Stone

## B

Baroque Dogaltas Turizm  
Bath Stone  
Batu Marble Tile & Stone  
BBS Brick and Stone  
Bestile  
Big Slabs by Nuovocorso  
Bloomstones London  
Bluesky Stone  
Brachot  
Breton  
By Fikri Stone

## C

Ceramiche Caesar  
Cicekmersan Marble  
Cidiam Group  
Clay International  
CMG Macchine  
Comandulli  
Costruzioni Meccaniche  
Donatoni  
Cunningham Masonry  
Cutting Machines

## D

D Zambelis  
Dal Forno  
Diamar  
Diate  
Dimpomar  
Diresco  
Donatoni  
Doulting Architectural Stone

## E

Emmedue Machinery  
English Stone Forum  
Erol Marble  
Etonsurfaces inc.

## F

Ferrari & Cigarini UK  
Fila Surface Care Products  
Fontanilli Marble UK  
Foshan Ansen Quartz Stone  
Fujian Quanzhou Nanxing Marble

## G

G S Diamant  
Gestra  
Ghods Stone Company  
Giacomini  
GNT - Granitos do Norte  
Granite Slabs UK  
Guanzhou Vidastone

## H

Hangzhou Stone  
Harrison Goldman  
Historic England

## I

Icon, The Institute of  
Conservation  
ICR Sprint  
IHBC  
Ilpa  
Ina Dogaltas  
Infinity - The Engineered Stone  
Integra Adhesives  
Italian Luxury Surfaces  
Italmecc

## J

Johnston Quarry Group  
Julipiedra

## K

Keope Ceramiche

## L

Lamar Ceramics  
Lamont Stone  
Lithofin  
LPE Group

## M

Mainstream Granite  
Malbros  
Manzelli  
Marmox UK  
Meridian Diamond Products  
MFC Mining  
Modamar Marble  
Mora Stone International  
MP Treatments  
MPG  
MVC - Portuguese Limestones

## N

Natural Stone by Safa  
Natural Stone Concepts  
Natural Stone Show 2025  
Nicolai Diamant  
Nikolaus Bagnara  
Noble Stone  
Northern Precision

## O

O.M.G.M. Bellani  
OMAG  
On Point Engineering  
Onur Marble  
Optidrive  
Ozerler Marble

## P

Pardais Granites  
Peakson Quartz Surface  
Piano Tile  
Polycor  
Portland Sculpture & Quarry Trust  
Prodim

## Q

Quartz Hub

## R

Rayon Stone Spain  
Rielli Giancarlo

## S

Saint Astier  
SAIT  
Sandberg  
Simaflex

Sirius Stone  
Skarlis Marble  
Slabsmith  
Society for the Protection of  
Ancient Buildings (SPAB)  
Spectra Stone  
SRB Stone  
Stamford Stone Company  
Stone Care Europe  
Stone Cladding Systems  
Stone Factory | Global Impex  
Stone Federation Great Britain  
Stone Gallery, From Valencian  
Region To The World  
Stone Italiana  
Stone Profit Systems  
Stonegate Precision Tooling  
Stonz N Pebblz  
Sundstrom Safety  
Sunmer Marble

## T

Terra Natural  
Terzago Macchine  
Thibaut  
Tile & Stone Journal  
Tiling Logistics

## U

Ugur Hidrolik  
UK Solmar Limited  
Usel Makina

## V

Vetro Tooling  
VSM Abrasives

## W

Waters Group  
Wodiam  
Worktop Fabricators Federation

## X



Xiamen Boss  
Xiamen Kunma Trade  
Xiamen Yoyo Stone

## Z

Zenith

Join the debate

Follow us on:

 [linkedin.com/showcase/the-natural-stone-show-hard-surfaces-london](https://www.linkedin.com/showcase/the-natural-stone-show-hard-surfaces-london)  
 [instagram.com/stoneshowlondon](https://www.instagram.com/stoneshowlondon)



# The Venue

# EXCeL LONDON



## The venue

Located in London's Royal Docks, ExCeL is part of a 100-acre campus, including three on-site DLR stations, eight on-site hotels and numerous bars & restaurants. [www.excel-london.co.uk](http://www.excel-london.co.uk)



## Rail, Elizabeth Line & DLR

ExCeL is on the DLR (Docklands Light Railway) and Elizabeth Line. Alight at Custom House station to enter ExCeL via the West Entrance, or Prince Regent station for the East Entrance.

For national train enquiries and to order advance tickets visit [www.nationalrail.co.uk](http://www.nationalrail.co.uk)



## Cable car

From the O2 visitors can use the IFS Cloud Cable Car for the quick 5-minute connection to ExCeL London. [tfl.gov.uk/modes/london-cable-car/](http://tfl.gov.uk/modes/london-cable-car/)



## Road

Follow signs for Royal Docks, City Airport and ExCeL. There is easy access from the M25, M11, A406 and A13. ExCeL is not located in the Congestion Charge zone but it is with the Low Emission Zone, visit [tfl.gov.uk/modes/driving/low-emission-zone](http://tfl.gov.uk/modes/driving/low-emission-zone) to check your vehicle and whether any charges may apply. For Sat Nav purposes use postcode E16 1FR. 1,800 car parking spaces are available on-site.



## Air

Use London City Airport (LCY), whenever possible. Located 5-minutes from ExCeL by taxi or 10-minutes by DLR, the airport offers 350 flights per day, from 46 international destinations. [www.londoncityairport.com](http://www.londoncityairport.com)



## Carbon footprint

Car sharing reduces the show's carbon footprint, so please try to travel with colleagues or take public transport!



## Accommodation

The ExCeL campus boasts an impressive eight hotels meaning a good night's sleep is never more than just a few minutes' walk from the exhibition. Hotels include the budget Ibis and Premier Inn; mid-range Novotel and Double Tree by Hilton; luxury Crown Plaza and Aloft London ExCeL; and even a floating hotel, the Sunborn London.



## Open times

Wednesday 7 May	9.00 – 17.00
Thursday 8 May	9.00 – 17.00
Friday 9 May	9.00 – 16.00



## Information

Information on all aspects of the show is available from [www.stoneshow.co.uk](http://www.stoneshow.co.uk)  
The Stone Show & Hard Surfaces is a

## Stone Specialist

event and part of

The **QMJ** Group

7 Regent Street  
Nottingham, NG1 5BS  
+44 (0) 115 945 3890  
[stoneshow@qmj.co.uk](mailto:stoneshow@qmj.co.uk)

The Stone Show & Hard Surfaces is strictly for the trade and building professionals only, with no under 16s admitted to the exhibition.



## The Elizabeth Line - transforming travel across London to the Stone Show & Hard Surfaces

The long-anticipated opening of the Elizabeth Line has made it even easier, faster, and more convenient to visit ExCeL. With the UK's leading venue now having its own dedicated Elizabeth Line station, journey times will be cut by up to two thirds, with the resulting time saved leading to a significant increase in networking and commercial trade from delegates.

The high-speed Elizabeth line – which now becomes part of the existing TfL network – stretches more than 60 miles from Reading and Heathrow in the west to Shenfield and Abbey Wood in the east, with 24 trains running per hour from May.

For ExCeL, visitors from central London will now be able to reach the venue in as little as 12 minutes; from Paddington (20 mins), Tottenham Court Road (15 mins), Farringdon (12 mins), Liverpool Street (10 mins), Whitechapel (9 mins) and Canary Wharf (3 mins).