

Free entry!

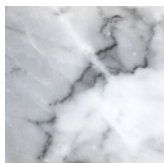
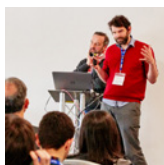
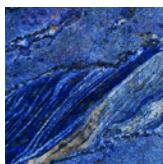
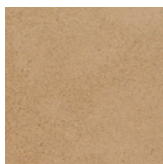
# the Natural StoneShow co-located with hard surfaces

The UK Stone industry event



6-8 June 2023

EXCEL  
LONDON

Where innovation meets design



## Featuring...

- ▶ 150+ exhibitors
- ▶ Natural Stone Show seminar theatre
- ▶  Natural Stone Awards Gallery
- ▶ Ask the experts
- ▶ Hard Surfaces seminar theatre
- ▶ Dedicated conservation area
- ▶ Guided tours
- ▶ Emerging Talent Awards
- ▶  MATERIAL DISTRICT. Sustainability Meets Design curated exhibition
- ▶ UK's favourite stone project award
- ▶ The latest CNC technology & tooling

Register  
now!

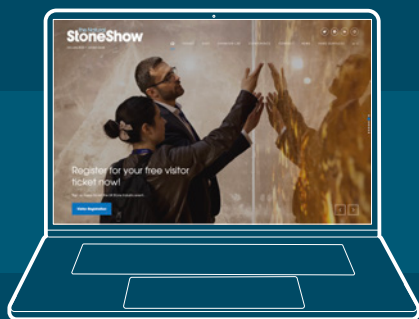
for your **free** entry ticket at  
[stoneshow.co.uk](https://stoneshow.co.uk) or  
[hardsurfaces.co.uk](https://hardsurfaces.co.uk)

Open from **9am – 5pm**

# Take a fresh look at the industry...

Join us at ExCeL London from 6-8 June 2023 to discover the latest developments from the world of Natural Stone & Hard Surfaces.

- **See** the rich palette offered by stone and hard surface suppliers as they debut collections from around the world. Select from seamless surfaces to large format tiles & slabs, in a stunning array of different finishes and treatments.
- **Discover** the newest innovations, from lightweight façades for the outside of buildings to 3D printed tiles on the inside; interior floors that extend perfectly on to patios to anti-microbial kitchen worktops with matching cabinets... and much more. Sizes, colours, textures previously undreamed of are transforming the possibilities of these materials for your clients.
- **Select** 'fix, seal and maintain' solutions to complement your materials range.
- **Meet** the new stars of the stone industry at the Emerging Talent Awards.
- **Make** your workshop more productive, sustainable and profitable with the latest stone processing machinery; digital templating solutions; high speed CNC tooling; water treatment & dust extraction systems; specialist software to maximise performance; and lifting solutions to keep your team safe.
- **Ask** the experts in the Stone Federation Village and Conservation Area for free guidance on sourcing, working, and designing in stone.
- **Join** the debate on how the industry is embracing sustainability and digitalisation at the dedicated Natural Stone and Hard Surfaces seminar theatres located on the show floor.
- **Vote** for your favourite award-winning stone project at [stoneshow.co.uk/vote-industry-choice-award-winner](https://stoneshow.co.uk/vote-industry-choice-award-winner)
- **Browse** the MaterialDistrict Sustainability Meets Design exhibition and find out about the low-carbon hard surfaces of the future.



## Register now!

Reserve your **free** ticket at  
[stoneshow.co.uk/register](https://stoneshow.co.uk/register)

## Tuesday 6 June

### Architects' Day



#### Stone: laying the foundations for a sustainable future

##### 10:00 – 11:00 **The what, why & how of EPDs**

The relevance and practicalities of Environmental Product Declarations for the stone industry.

##### 12:00 – 13:00 **Studies in stone: award-winning projects discussed**

Architects present a series of award-winning projects with the session culminating in the announcement of the 'Industry Choice' award for the UK's favourite stone project.

##### 14:00 – 15:00 **Ethical & responsible sourcing of natural stone**

Do you know where and how your stone has been sourced? Is the process improving or damaging communities and what are its environmental impacts?

##### 15:15 – 15:45 **Sustainable Surface protection solutions – indoor air quality care**

Are the surface treatments you are using safe regarding emissions and genuinely sustainable?

##### 11:00 – 12:00 **Floor tile design trends**

Canadian tile guru, Ryan Fasan, explores and explains the global floor tile design trends for 2023/24.

##### 13:00 – 14:00 **Decoration & detail**

How digital inkjet and advanced decorating technologies have reinvigorated the market for both traditional artisan tiles, and commercial ceramics. The emerging market for short-run bespoke tiles and panels: and the enduring appeal of dynamic glaze effects.

##### 14:20 – 14:45 **Worktop Insights**

Invisible wireless charging for solid surfaces – How IPC Technology is providing fast charging for modern mobiles through your worktop

##### 15:00 – 16:00 **The future of façades**

The exponential rise of ventilated ceramic façades: stone-, metallic-, concrete-, and timber effects. How designers and façade specialists are using different textures, framing options, and tile formats to meet the needs of modern architecture.

## Wednesday 7 June

### Industry Day



##### 10:00 – 11:00 **Industry updates: tackling diversity, the skills gap and local authority planning**

Meeting the challenges facing the industry with an update from WINS; the launch of the Stone Academy; and where the opportunities lie for the industry through the planning process.

##### 12:00 – 13:00 **Setting the standard**

BS8298 part 5 for stone cladding (interiors); BS7533 part 101/2 for landscaping; and the new code of practice for natural stone installation in Bathrooms, Shower Enclosures and Wet Rooms.

##### 14:00 – 15:00 **Emerging Talent Awards: meet the new stars of the stone industry**

A panel debate on how the next generation is tackling the skills gap and driving sustainability and digitalisation, followed by the presentation of the Emerging Talent Awards.

##### 11:00 – 12:00 **Wall tile design trends**

Tile of Spain's charismatic Canadian Consultant, Ryan Fasan, returns to highlight the latest world-wide design directions and fashion formats in wall tiles.

##### 13:00 – 14:00 **Large-format installation insights**

All you need to know about handling and installing XXL format tiles, including levelling systems, dry cutting versus wet cutting, and the latest site handling tools and systems.

##### 14:20 – 14:45 **Worktop Insights**

From concept to Coverlam – The evolution of new porcelain worktop designs from initial inspiration through scanning and digital decoration to continuous pressing and firing.

##### 15:00 – 16:15 **Exterior elements**

This session explores the growing market for 20mm and 30mm outdoor porcelain tiles, including dry, pedestal, and adhesive laying systems, and the latest patterns and decorative options. Key factors - such as frost- and slip-resistance, sealing, and routine maintenance - will all be covered.

## Thursday 8 June

### Conservation Day



##### 10:00 – 11:30 **Responsible sourcing of building stone: online tools**

From the newly launched Building Stone Database for England to the Historic Environment Scotland Stone Carbon Calculator.

##### 12:00 – 13:50 **Understanding stone in relation to climate change: a selection of current research projects**

Topics covered include the Bioreceptivity of stone and UVC cleaning guidance.

##### 14:00 – 15:30 **Sustainable supply of roofing stone and slate**

A series of case studies focusing on indigenous slates.

##### 11:00 – 12:00 **Design trends in exterior tiles and solid surfaces**

Tile of Spain Consultant, Ryan Fasan, one of the acknowledged fashion forecasters in the global tile arena, completes his trilogy of analytical talks by focusing on exterior tiling and solid surface trends for 2023/24.

##### 13:00 – 14:00 **Environmental edge**

This session offers detailed analysis of tile's green credentials, covering water reuse, embodied energy, co-generation, recycled content, raw material sourcing, transport, logistics, installation, durability, maintenance, and end-of-life options.

##### 14:10-14:40 **Fabricator Masterclass**

The insider's guide to equipment selection, cutting sequences, adhesives, substrates, and design detailing for stress-free worktop installations.

##### 15:00 – 16:00 **Sustainable specifications**

The concluding session investigates and evaluates the sustainability pathways of one of Italy's most respected tile groups, and a Spanish pacesetter in surface finishes and façades, plus a start-up that places care for the planet at the very heart of its business model.

CPD-accredited by



# Ask the experts

## Natural Stone Awards Gallery & Industry Choice Award



Be inspired by award-winning stone projects. Organised by Stone Federation Great Britain, the Natural Stone Awards recognises projects which demonstrate exemplary design and execution of stonework. Displayed in a photographic gallery at the show, all the category award winners are impressive and outstanding examples of the contemporary use of stone in architecture. You can see them at [stoneshow.co.uk/vote-industry-choice-award-winner](https://stoneshow.co.uk/vote-industry-choice-award-winner), where you can also add your vote for the project you believe deserves the Industry Choice Award.



- 1 Chelsea Barracks, Phase IV, London – New Build Modern Style Cladding Winner
- 2 Elephant Springs, Elephant Park, London – Landscaping Commercial & Public Realm Winner
- 3 Lenaboy, County Dublin, Ireland – Interiors Commercial & Residential Winner
- 4 The Friary, Carlisle Cathedral, Carlisle – Repair & Restoration Ecclesiastical Winner

## Conservation Area

Stone plays a vital role in maintaining the built heritage of the country. Is there a stately home, important civil building or monument that does not include stone? Stone is also prevalent in many modest listed buildings and conservation areas. The sector has its own Conservation Area at the exhibition in area D56-D60, co-ordinated by Historic England and supported by the Institute of Historic Building Conservation, The Institute of Conservation, The Society for the Protection of Ancient Buildings and the English Stone Forum. Free advice, case studies, forums and other online resources can be accessed to help visitors select the correct stone for building repair.



Historic England



## Stone Federation Village

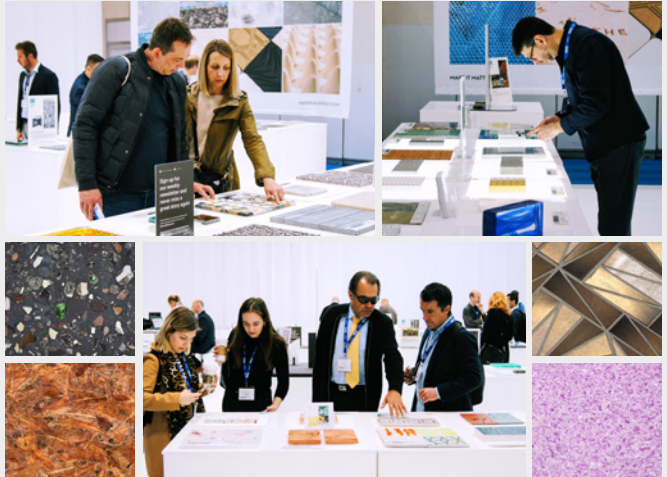
Visit the Stone Federation Village for free technical advice on a one-to-one basis from some of the industry's leading experts. Technical, Ethical Sourcing, Health & Safety and Local Authority Planning – these are just some of the subjects covered by the Stone Federation experts. No appointment is necessary, simply introduce yourself at stand E30 and ask the Stone Federation team to match your query to one of the available experts.

# Sustainability Meets Design



MaterialDistrict has curated an experience of over 100 innovative surfaces at this year's show. Unexpected performance and stunning aesthetics will be found in materials featured for their lightweight recycled content, their durability and other distinct properties and visual appeal. There are products for exterior and interior use created to satisfy both form and function.

The development of hard materials is all about new surfaces, sustainable challenges, and creative digital techniques for smarter ways to add that wow-factor to construction. What are the latest developments? Come and find out...



## Exhibitor list

A.S.M. Tenax	Donatoni	IHBC	Nikolaus Bagnara	Stamford Stone Company
Abaco	Coverlam Top by Grespania	Ilpa	Noble Stone	Stone Care Europe
ABK Stone by Bloomstones London	Cunningham Masonry Cutting Machines	Ina Natural Stone	Northern Precision	Stone Cladding Systems
Achilli	D Zambelis	India Stonemart 2024	O.M.G.M. Bellani	Stone Factory
AlterEgo Facades	Dal Forno	Infinity - The Engineered Stone	OMAG	Stone Federation Great Britain
Ansen Quartz Stone	Diamar	Integra Adhesives	On Point Engineering	Stone Gallery from Valencian Region to the World
Aquafil Solutions	Diatex	Italian Luxury Surfaces	Onur Marble	Stone Italiana
Archiporcelain	Dimpomar	Italmecc	Optidrive	Stone Profit Systems
Arklam	Diresco	Johnston Quarry Group	Ozerler Marble	Stonagate Precision Tooling
Artemistone	Donatoni	Julipetra	Pardais Granites	Stylib
Artisan Stone / Gwrhyd Quarry	Doultong Architectural Stone	Kar-Mar	Paving Stock	Sundstrom Safety
Ascale Tau	Ecorok by Diamik Glass	Keepe Ceramiche	Peakson Quartz Surface	Summer Marble
Authentic Stone	Emmedue Machinery	KGF Granites	Pentagon Tiles	Terra Natural
AVA Stone	English Stone Forum	Komrucuoglu Marble	Piano Tile	Terzago Macchine
Avesta Stone	Erol Marble	Leading Stone	Pikaro Hand Made Tiles	Thibaut
Baroque Dogaltas Turizm	Etonsurfaces	Lamar Ceramics	Planet Granite	Tile & Stone Journal
Bath Stone	Ferrari & Cigarini UK	Lapitec	Polycor	Tiling Logistics
Batu Marble	Fila Surface Care Products	Lithofin	Portland Sculpture & Quarry Trust	Ugr Ugur Hidrolik & Pnomatik Makine
BBS Brick and Stone	Fontanilli Marble UK	LPE Group	Premium Marbles & Granites	UK Solmar
BCC Stone	Foshan Cera Power Ceramics	Mainstream Granite	Prodium	Uset Makine
Bestile	G S Diamant	Malbros	Quarella	Vetro Tooling
Big Slabs by Nuovocorso	Genex Stones London	Manzelli	Rayon Stone Spain	VSM Abrasives
Bloomstones London	Gestra	Marmox UK	Rielli Giancarlo	Waters Group
Bluesky Stone	Giacomini	Meridian Diamond Products	Saint Astier	Wharf Worktops
Brachot	GNT - Granitos do Norte	Minestone Exports	SAIT	Wodiam
Breton	Granite Slabs UK	Modamar Marble	Sandberg	Worktop Fabricators Federation
By Fikri Stone	Guangdong Bosun Stone	Mora Stone International	Simaflex	Xiamen Boss
Ceramiche Caesar	Guanzhou Vidastone	MP Treatment UK	Sirius Stone	Xiamen Kunma
Cicek Marble	Harrison Goldman	MPG	Skarlis Marble	Xiamen Maixee
Cidiam Group	Historic England	MPG Stone	Slabsmith	Xiamen New Europe
Clay International	Huazhong Stone	MVC - Portuguese Limestones	Society for the Protection of Ancient Buildings (SPAB)	Xiamen Yoyo Stone
CMG Macchine	Icon, The Institute of Conservation	Natural Stone by Safa	Sorkun Marble	Zenith
Comandulli Srl	ICR Sprint	Natural Stone Concepts	Spectra Stone	
Costruzioni Meccaniche		Natural Stone Show 2025	SRB Group	
		Nicolai Diamant		

Join the conversation



@stoneshowlondon  
#stoneshow2023

# Visitor information

**EXCeL**  
LONDON



## The venue

Located in London's Royal Docks, ExCeL is part of a 100-acre campus, including three on-site DLR stations, eight on-site hotels and numerous bars & restaurants. [www.excel-london.co.uk](http://www.excel-london.co.uk)



## Rail, Elizabeth Line & DLR

ExCeL is on the DLR (Docklands Light Railway) and Elizabeth Line. Alight at Custom House station to enter ExCeL via the West Entrance, or Prince Regent station for the East Entrance.

For national train enquiries and to order advance tickets visit [www.nationalrail.co.uk](http://www.nationalrail.co.uk)



## Cable car

From the O2 visitors can use the IFS Cloud Cable Car for the quick 5-minute connection to ExCeL London. [tfl.gov.uk/modes/london-cable-car/](http://tfl.gov.uk/modes/london-cable-car/)



## Road

Follow signs for Royal Docks, City Airport and ExCeL. There is easy access from the M25, M11, A406 and A13. ExCeL is not located in the Congestion Charge zone but it is with the Low Emission Zone, visit [tfl.gov.uk/modes/driving/low-emission-zone](http://tfl.gov.uk/modes/driving/low-emission-zone) to check your vehicle and whether any charges may apply. For Sat Nav purposes use postcode E16 1FR. 1,800 car parking spaces are available on-site.



## Air

Use London City Airport (LCY), whenever possible. Located 5-minutes from ExCeL by taxi or 10-minutes by DLR, the airport offers 350 flights per day, from 46 international destinations. [www.londoncityairport.com](http://www.londoncityairport.com)



## Carbon footprint

Car sharing reduces the show's carbon footprint, so please try to travel with colleagues or take public transport!



## Accommodation

The ExCeL campus boasts an impressive eight hotels meaning a good night's sleep is never more than just a few minutes' walk from the exhibition. Hotels include the budget Ibis and Premier Inn; mid-range Novotel and DoubleTree by Hilton; luxury Crown Plaza and Aloft London ExCeL; and even a floating hotel, the Sunborn London.



## Open times

Tuesday 6 June	9.00 – 17.00
Wednesday 7 June	9.00 – 17.00
Thursday 8 June	9.00 – 16.00



## Information

Information on all aspects of the show is available from [www.stoneshow.co.uk](http://www.stoneshow.co.uk)

The Natural Stone Show and Hard Surfaces is a



event and part of

**The QMJ Group**

7 Regent Street  
Nottingham, NG1 5BS  
+44 (0) 115 945 3890  
[stoneshow@qmj.co.uk](mailto:stoneshow@qmj.co.uk)

The Natural Stone Show and Hard Surfaces are strictly for the trade and building professionals only, with no under 16s admitted to the exhibition.



## The Elizabeth Line - transforming travel across London to the Natural Stone Show

The long-anticipated opening of the Elizabeth Line has made it even easier, faster, and more convenient to visit ExCeL. With the UK's leading venue now having its own dedicated Elizabeth Line station, journey times will be cut by up to two thirds, with the resulting time saved leading to a significant increase in networking and commercial trade from delegates.

The high-speed Elizabeth line – which now becomes part of the existing TfL network – stretches more than 60 miles from Reading and Heathrow in the west to Shenfield and Abbey Wood in the east, with 24 trains running per hour from May.

For ExCeL, visitors from central London will now be able to reach the venue in as little as 12 minutes; from Paddington (20 mins), Tottenham Court Road (15 mins), Farringdon (12 mins), Liverpool Street (10 mins), Whitechapel (9 mins) and Canary Wharf (3 mins).