

## LABORATORY FURNITURE

All system working benches and cabinets are made of stainless steel.  
(material no. 1.4301)

### Table tops:

- smooth stainless steel cover, made of 2 mm thick stainless steel
- matt brushed lengthways
- worktop lined with wood
- on the undersides with water drip noses on all three sides
- with upstand at the rear on request

### Frames:

- stainless steel (square tubes 40x40x1,25 mm)
- aluminium legs, height-adjustable to compensate for slopes or unevenness

### Cabinets:

- made entirely of stainless steel
- sturdy, self-supporting design, side panels, doors and drawers with bevelled handle strip
- shelves: height-adjustable stainless steel intermediate shelves

### Wing doors + Drawers:

- with horizontal handle moulding
- with sturdy maintenance-free hinge
- drawers on roller runners with stop, can be unhinged if required
- load capacity up to max. 60 kgs

### Further accessories on request:

- material storage cabinets with sliding or hinged doors
- wall-mounted cupboards
- storage shelves

### Working height:

- optionally 750 mm or 850 mm





## Laboratory Furniture Stainless Steel

### Ⓐ Laboratory Cabinets

- with drawers and double-wing doors
- closed on all sides, with side panels
- ground clearance: 150 mm
- **optional:** with upstand on the back
- **design:** 1 drawer, 1 double-wing door
- **dimensions (WxDxH):** 600x800x850 mm

**Order-No. F30060**

- **design:** 2 drawers, 2 double-wing doors
- **dimensions (WxDxH):** 900x800x850 mm

**Order-No. F30090**

- **design:** 2 drawers, 2 double-wing doors
- **dimensions (WxDxH):** 1200x800x850 mm

**Order-No. F30120**

- **design:** 3 drawers, 3 double-wing doors
- **dimensions (WxDxH):** 1500x800x850 mm

**Order-No. F30150**

### Ⓑ Laboratory Benches

- with drawers
- with fix depositing board
- ground clearance: 150 mm
- **design:** 1 drawer
- **dimensions (WxDxH):** 600x800x850 mm

**Order-No. F21060**

- **design:** 2 drawers
- **dimensions (WxDxH):** 900x800x850 mm

**Order-No. F21090**

- **design:** 2 drawers
- **dimensions (WxDxH):** 1200x800x850 mm

**Order-No. F21120**

- **design:** 3 drawers
- **dimensions (WxDxH):** 1500x800x850 mm

**Order-No. F21150**

### Ⓒ Laboratory Benches

- with water basin made of stainless steel and cold and warm water armatures with draw-out type rose
- **dimensions of basin:** 400x500x250 mm
- incl. mud storage tank of stainless steel on rolls
- mit Frontblende, abnehmbar
- Seitenblenden rechts + links
- mit Schwallrand ums Becken
- ground clearance: 150 mm
- **optional:** hand shower with standpipe
- **dimensions (WxDxH):** 1200x800x750 mm

**Order-No. F55120**

- **dimensions (WxDxH):** 1500x800x750 mm

**Order-No. F55150**

- **dimensions (WxDxH):** 1600x800x750 mm

**Order-No. F55160**

## Laboratory Furniture Stainless Steel



### Ⓐ Laboratory Benches

- with fix depositing board
- dimensions (WxDxH): 600x800x850 mm  
**Order-No. F20060**
- dimensions (WxDxH): 900x800x850 mm  
**Order-No. F20090**
- dimensions (WxDxH): 1200x800x850 mm  
**Order-No. F20120**
- dimensions (WxDxH): 1500x800x850 mm  
**Order-No. F20150**

### Ⓑ Laboratory Benches (without picture) like Ⓐ but:

- without depositing board
- dimensions (WxDxH): 600x800x850 mm  
**Order-No. F22060**
- dimensions (WxDxH): 900x800x850 mm  
**Order-No. F22090**
- dimensions (WxDxH): 1200x800x850 mm  
**Order-No. F22120**
- dimensions (WxDxH): 1500x800x850 mm  
**Order-No. F22150**



### Ⓒ Croner Laboratory Benches

- with fix depositing board
- with front panel
- ground clearance: 150 mm
- dimensions (WxDxH):  
900/800x900/800x850 mm  
**Order-No. F26900**



### Ⓓ Laboratory Benches

- on rolls
- with fix depositing board
- dimensions (WxDxH): 800x800x850 mm  
**Order-No. F23080**

## Laboratory Furniture Concrete Testing



### Ⓐ Laboratory Benches

- with integrated, electric flow table acc. to DIN 1048, DIN EN 12350-5, with electrically operating elevating device and counter, with galvanized flow plate, placing funnel with magnetic holders and tamper
- with rubber profiles for dirt protection
- with front panel
- table plate / flow table: 700x700 mm
- stroke height: 40 mm
- placing funnel: Ø 130x200 mm
- ground clearance: 350 mm
- grating made of stainless steel: 500x500 mm
- PVC-collecting container: 600x400x175 mm

• dimensions (WxDxH): 900x800x750 mm

**Order-No. F51090**

• dimensions (WxDxH): 1500x800x750mm

**Order-No. F51150**

• dimensions (WxDxH): 1600x800x750mm

**Order-No. F51160**

### Ⓑ Laboratory Benches

- like Ⓐ but with:
- integrated, manual flow table acc. to DIN EN 12350-5, manual, with galvanized flow plate, placing funnel with magnetic holders and tamper
- dimensions (WxDxH): 900x800x750 mm

**Order-No. F50090**

• dimensions (WxDxH): 1500x800x750mm

**Order-No. F50150**

• dimensions (WxDxH): 1600x800x750mm

**Order-No. F50160**

### Ⓒ Laboratory Benches

- with integrated high-frequently vibrating table (vibration frequency: 9000 1/min)
- with timer and long-duration switch
- with rubber profiles for dirt protection
- with front panel
- voltage: 230 Volt / 50 Hz
- vibration plate: 350x650mm
- clamping device adaptable for all common moulds

#### • optional:

- magnetic clamping
- speed adjustment
- dimensions (WxDxH): 900x800x750 mm

**Order-No. F52090**

## Laboratory Furniture Concrete Testing



A



B



C

### Ⓐ Laboratory System Table with Magnetic Vibration Table

- with built-in magnetic vibrating table
- special design with 2 clamping magnets for easy and safe clamping of suitable sample moulds
- stationary version
- with external control panel on wall console for wall mounting
- display and setting of speed from approx. 2000-6000 UpM an time from 0-60 seconds.
- low-noise operation due to mould centering and 2-motor design
- magnetic vibration table all round with sealing against dirt
- with front panel
- side panels right and left
- table size / vibrating table 600x400 mm
- cable length from vibrating table to control unit approx. 3 m
- ground clearance: 350 mm
- dimensions (WxDxH): 900x800x850 mm

**Order-No. F52090-850-Magnet**

### Ⓑ Laboratory Benches

- with built-in electronic balance
- with LCD digital display and interface RS232
- degree of protection IP 65
- with front panel
- capacity : 35.0 kg
- resolution: 1.0 g
- weighing platform (stainless steel): 400x300 mm

#### • optional:

- weighing table with roller conveyor
- further weighing ranges

- dimensions (WxDxH): 600x800x750 mm

**Order-No. F52061**

### Ⓒ Laboratory Benches

- with grating on left side
- dimensions of grating: 500x500 mm
- incl. VA-down gate and PVC-collecting container wir roller cart
- with front panel
- side panels right and left
- ground clearance: 350 mm

- dimensions (WxDxH): 1500x800x750 mm

**Order-No. F54150**

- dimensions (WxDxH): 1600x800x750 mm

**Order-No. F54160**

## Laboratory Furniture Concrete Testing



A

### Ⓐ Laboratory Benches

- with grating on right side
- dimensions of grating: 500x500 mm
- incl. VA-down gate and PVC-collecting container with roller cart
- with front panel
- side panels right and left
- ground clearance: 350 mm
- dimensions (WxDxH): 1500x800x750 mm

**Order-No. F53150**

- dimensions (WxDxH): 1600x800x750 mm

**Order-No. F53160**



B

### Ⓑ Laboratory Benches

- with water basin made of stainless steel and cold and warm water armatures with draw-out type rose
- dimensions of basin: 400x500x250 mm
- incl. mud storage tank of stainless steel on rolls
- with front panel
- side panels right and left
- with surge rim at the sink
- ground clearance: 350 mm

- **optional:** hand shower with standpipe

- dimensions (WxDxH): 1200x800x750 mm

**Order-No. F55120**

- dimensions (WxDxH): 1500x800x750 mm

**Order-No. F55150**

- dimensions (WxDxH): 1600x800x750 mm

**Order-No. F55160**



C

### Ⓒ Laboratory Benches

- with integrated drying oven
- for fresh concrete until 10 kg
- for all sorts of gas with safety pilot
- with 1 drying pan (L 0511), high pressure hose and regulator
- closed on all sides, with side panels

- **execution:** 1 drawer, 1 wing door

- dimensions (WxDxH): 1600x800x750 mm

**Order-No. F56160**



D

### Ⓓ Laboratory Benches

- with double roller conveyors on the top of table
- fix depositing board below
- with front panel

- dimensions (WxDxH): 1500x800x750 mm

**Order-No. F57150**

## Laboratory Furniture Cement Testing



A

### Ⓐ Laboratory Benches

- with integrated vibrating table acc. to EN 196
- vibration frequency: 3000 1/min by magnetic vibrator
- with timer as well as controller/ display of oscillation amplitude
- with rubber profiles for dirt protection
- with front panel
- with quick clamp device
- max. capacity: 20 kg
- voltage: 220 Volt / 50 Hz

• dimensions (WxDxH): 900x800x850 mm

**Order-No. F60090**

### Ⓑ Humidity Storage Cabinet

- for the standardized storage of cement and mortar prisms in triple molds in unregulated design
- acc. to DIN EN 196
- without technical unit
- cabinet completely made of stainless steel
- with thermo-hygrometer in front door
- with ventilation grille with adjustable louvre blinds
- with differential pull-outs made of perforated stainless steel sheet
- closed on all sides, with side panels
- Base as water tray with drain cock
- ground clearance: 150 mm
- storage capacity: 24 moulds
- differential drawers: 6 pcs.
- wing doors: 2 pcs.

• dimensions (WxDxH): 1300x800x850 mm

**Order-No. F61130**



B



## Laboratory Furniture Cement Testing

### ④ Humidity Storage Cabinet

- for the standard storage of cement and mortar prisms in three-gang moulds at 20°C and 95% r.H.
- acc. to DIN EN 196
- cupboard with doors
- double insulated
- below installed control with electronic controlled heating and cooling
- temperature inside  $+20^{\circ}\pm 1^{\circ}\text{C}$  at surrounding temperature of max 35°C
- with differential drawers made of stainless steel
- with 1/2" water connection (optional tank) incl. ultra-fine filter
- fresh water connection 1/2" (not required with tank option)
- electrical connection: 230 V/50 Hz; 1.5 kW

- storage capacity: 48 moulds
- differential drawers: 12 pieces
- wing doors: 2 pieces
- dimensions (WxDxH): 1400x800x1900 mm

#### Order-No. B29073

- storage capacity: 24 moulds
- differential drawers: 6 pieces
- wing doors: 1 piece
- dimensions (WxDxH): 800x800x1900 mm

#### Order-No. B29071

## Laboratory Furniture Cement Testing



### ④ Humidity Storage Cabinet

- for the standard storage of cement and mortar prisms in three-gang moulds
- acc. to DIN EN 196
- cabinet completely made of stainless steel
- double-walled insulated
- heating, cooling and humidification electronically controlled
- inside temperature  $+20^{\circ}\pm 1^{\circ}\text{C}$  at an ambient temperature of max.  $35^{\circ}\text{C}$
- humidity area  $> 90\%$  r.H.
- with differential drawers made of perforated stainless steel plate
- with 1/2" water connection (optional tank) incl. ultra-fine filter
- 1/2" fresh water connection (not required for tank solution)
- electrical connection: 230 V/50 Hz; 1.5 kW

- storage capacity: 36 moulds
- differential drawers: 9 pieces
- wing doors: 3 pieces
- dimensions (WxDxH): 2700x800x900 mm

**Order-No. B29076**

**Optionally also available with 24 moulds.**

dimensions (WxDxH): 2200x800x900 mm





## Laboratory Furniture Basic

- top: stainless steel
- frame: powder-coated sheet steel
- worktop: wood lined, covered with 2 mm thick stainless steel
- RAL colour according to customer requirements

### Ⓐ Work Bench

- base frame made of tubular steel: 45x45x2mm
  - plastic foot studs with level compensation
  - with shelf made of stainless steel 1.4301, polished
  - dimensions (WxDxH): 1500x750x900 mm
- Order-No.** F720150

### Ⓑ Corner Work Bench

- front with panel
  - dimensions (WxDxH): 850x850x900 mm
- Order-No.** F725900

### Ⓒ Work Cabinet

- with 2 drawers + 2 wing doors
  - substructures from left to right fitted as follows:
    - block 1: SK 180, T540, fitted shelf
    - block 2: SK 180, T540, fitted shelf
  - drawer inside dimensions (WxD): 500x540 mm
  - central lock with 2 keys
  - base cover
  - dimensions (WxDxH): 1350x750x900 mm
- Order-No.** F730135

### Ⓓ Work Cabinet

- with 3 drawers + 3 wing doors
  - substructures from left to right fitted as follows:
    - block 1: SK 180, T540, fitted shelf
    - block 2: SK 180, T540, fitted shelf
    - block 3: SK 180, T540, fitted shelf
  - drawer inside dimensions (WxD): 500x540 mm
  - central lock with 2 keys
  - base cover
  - dimensions (WxDxH): 1650x750x900 mm
- Order-No.** F730165

### Ⓔ Work Cabinet

- with 2 stainless steel basin 400x400x250 mm
  - underframe made of tubular steel
  - all-round edge profile
  - 2 pull-out shower heads
  - **optional:** mud storage tank
- Substructure:
- 3-sided basin facing
  - plastic foot studs to compensate for uneven floors
  - ground clearance: 360 mm
  - dimensions (WxDxH): 1500x750x900 mm
- Order-No.** F755150-2B

**other models on request**



## Laboratory Container Concrete Testing

complete with all equipment for:

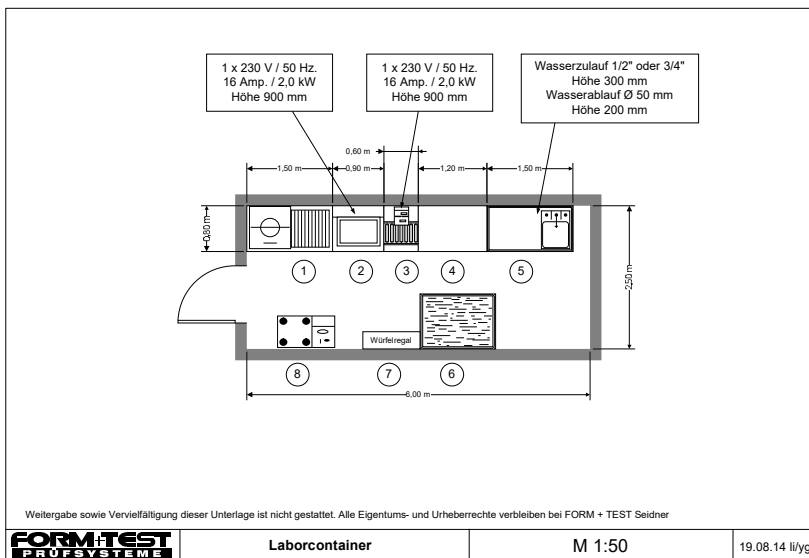
- **Fresh Concrete**  
consistency – density – air content
- **Hardened Concrete**  
specimens production and storing
- **Compression Strength**
- **Aggregates**  
sieve line – moisture content

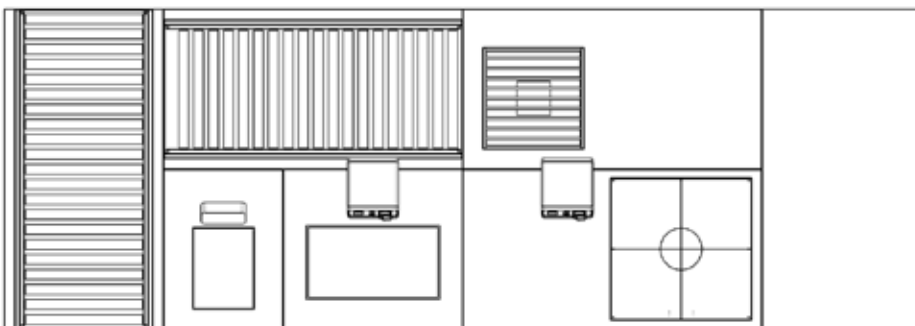
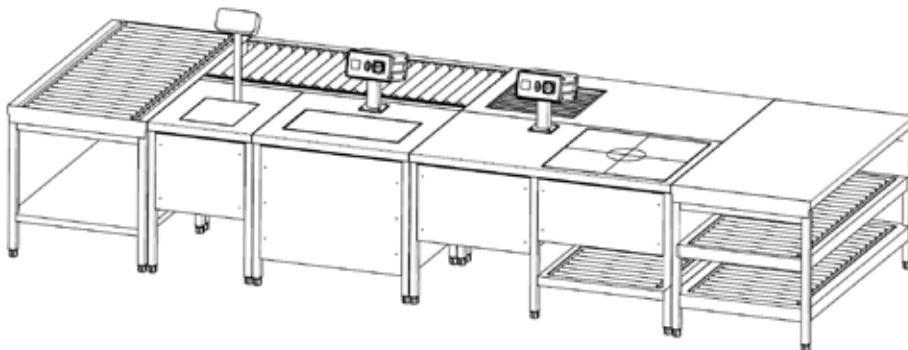
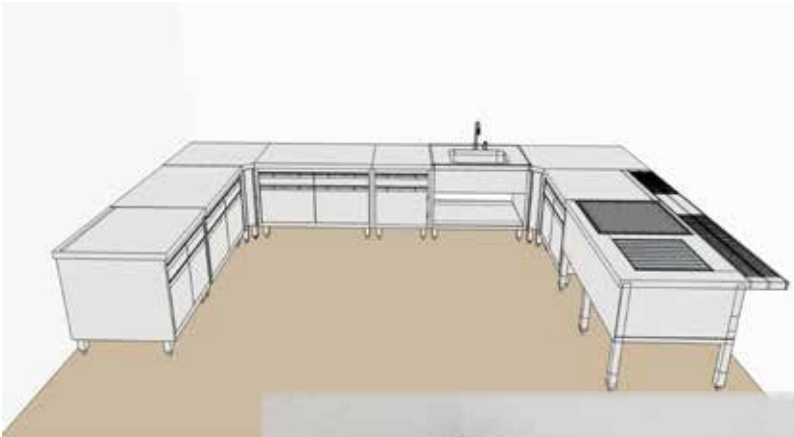
dimensions (approx.)

- length: 6058 mm
- width: 2438 mm
- height: 2830 mm
- height - inside: 2500 mm
- floor area: 15 m<sup>2</sup>
- weight: 6000 kg

### Options Container

- increased thermal insulation
- air conditioner
- painting in RAL color





## Planning Laboratory Equipment

- planning workstations for optimal work processes and ergonomic aspects
- integration of test equipment such as balances, vibrating table, flow table, etc.
- consideration of local conditions and requirements
- planning draft for discussion with customers and evaluation of proposals
- subsequent offer preparation



**FORM+TEST Seidner & Co. GmbH**

Zwiefalter Str. 20 • D-88499 Riedlingen

+49 (0) 7371 9302-20 • -99

[www.formtest.de](http://www.formtest.de)

[sales@formtest.de](mailto:sales@formtest.de)