



# CONCRETE, QUARRY & RECYCLING PLANT SOLUTIONS



[www.cabragheng.com](http://www.cabragheng.com)

**METFINN**  
GROUP

# ABOUT US

**Metfinn Group are a leader in the design and manufacturing of machinery and material handling systems for the Construction, Plant, Recycling and Mining sectors.**

**With over 40 years innovation and profound design legacy and experience their strategic partnership harnesses the collective expertise and manufacturing capabilities of both companies creating a pioneering force in the industry and have been a supplier to over 35 countries worldwide on many prestigious projects including windmill construction sites, civil engineering projects including bridges and tunnels, quarry, concrete and recycling plant solutions produced and sold under the Cabragh Engineering brand which is a name synonymous with innovation and profound design legacy**

**We understand the dynamic nature of the industries we serve, and our team is dedicated to providing tailored solutions that align with the specific needs of our clients.**

**Metfinn Group is made up of Two Renowned  
Manufacturing Entities:**

**ESTABLISHED SINCE 1984  
BUILT TO LAST**



**[www.cabragheng.com](http://www.cabragheng.com)**



**2**

**STATE OF THE ART  
MANUFACTURING  
FACILITIES**

**40**

**YEARS OF  
EXCELLENCE**

**35**

**COUNTRIES  
WORLDWIDE**

**QUALITY**

**Our products feature  
proven designs, exceeding  
industry standards**

**EXPERTISE**

**Our client-focused  
strategy ensures clients  
receive the most efficient  
and advanced industry  
solutions.**

**CUSTOMER  
FOCUS**

**We are a team of  
proficient manufacturing  
engineers known for our  
industry experience**

**[www.cabragheng.com](http://www.cabragheng.com)**



# A Great history created between Two Companies Metfinn and Cabragh Eng that brings us today to the Metfinn Group

**1984 Cabragh Eng Established by Kelly family**

**2013 Metfinn Surface Coating Established by brothers Shane & Jerone Kelly.**

**2019 Metfinn Acquire Cabragh Eng and create the Metfinn Group.**

**2020 Metfinn group expand its service offering to including manufacturing of assemblies for OEM's.**

**2021 Expansion of Production FootPrint with additional Surface Coating site purchased to create overall facilities of 11,000 M<sup>2</sup>.**

**2024 New Product Launch for Mobile Batching Plant**

**2025 R&D of new range of products for Concrete Industry**

[www.cabragheng.co.uk](http://www.cabragheng.co.uk)



**Cabragh Engineering manufacture a wide range of concrete batching plant designs, including crushing screening and recycling machinery projects which are adaptable to customer requirements.**

**Cabragh provide a complete customer service from initial design state to commissioning.**

**Our manufacturing facilities are purpose built with a factory floor area in excess of 11,000 M<sup>2</sup> The production system process prides itself in quality and development. Innovative ideas through employee commitment and customer feedback.**



**CABRAGHENG**

## **OUR VISION**

**Loyalty to our Customers Future, is our Future. To become essential to our customers in providing the best service and products helping them to achieve their goals.**

## **OUR MISSION**

**At Metfinn Group including Cabragh Eng. Our mission is to continue to work together as a team on our journey on becoming the go-to metal manufacturing provider in NI/UK and beyond. Our dedication to excellence, continuous improvement, and customer-centric approach set us apart in the industry. Our Core values remain the forefront of our people**

**[www.cabragheng.com](http://www.cabragheng.com)**





[www.cabragheng.com](http://www.cabragheng.com)



# Static / Semi mobile Concrete Batching Plants

ESTABLISHED SINCE 1984  
BUILT TO LAST



Cabragh Engineering's Concrete Batching Plants are engineered with precision at their core.

From the accurate measurement of raw materials to the efficient mixing process, our plants are designed to deliver concrete with a uniform composition, meeting the stringent quality standards demanded by the construction industry. This precision is key to ensuring the structural integrity and durability of the final construction.

## WET BATCHING PLANTS

Cement / PFA material wet batch plants designed for high output production and the continuous production of concrete. Small, medium and Large Batching Plants to suit all our customer requirements.

## DRY BATCHING PLANTS

Modular design for a range of products to be produced, from ready mix concrete, through to aggregates, sand, cement and polymers.



[www.cabragheng.com](http://www.cabragheng.com)



# MOBILE BATCHING PLANTS

ESTABLISHED SINCE 1984  
BUILT TO LAST



## MOBILE BATCHING PLANTS

A mobile batching plant is a portable, self contained facility that produces concrete on-site. Designed for construction projects that require fast , reliable and high quality concrete, mobile batching plants offer the flexibility to move between different project locations while ensuring precise control over the mixing process.

Mobile batching plants provide an efficient, practical and cost effective solution for your concrete needs, Whether you're working on a small building or a large scale construction project, a mobile batching plants brings flexibility and reliability to the job on any customer site.



[www.cabragheng.com](http://www.cabragheng.com)



# Storage Quarry Material Systems

Cabragh engineering's storage Silo and Hopper Systems are robust construction, ensuring durability and longevity even in challenging environments. The design considers factors such as material flow, discharge efficiency and environmental impact, providing a seamless and efficient storage solution.

## Storage Hoppers

- Modular heavy-duty support framework featuring RSJ upright with bracing.
- Tailored to accommodate various sizes of storage hoppers and blending plants.
- Helmet design-type discharge doors or belt feeders, catering to applications involving sand, cement, peat, coal, woodchips and other materials in the concrete quarry recycling industries.
- Tapered design for the free flow of materials
- Optional for electric / air vibration facilitation

## Vertical Storage Silo's

RSJ uprights and bracing providing robust support for cylindrical and cone sections.

- Environmental dust filters and hi/lo-level alarm indicators.
- one or two outlets with flanges suitable for screw conveyor connections, a fill pipe with a PRV valve and bell end, a manual butterfly valve and a safety pressure lid with manhole maintenance access.

[www.cabragheng.com](http://www.cabragheng.com)



## Low Level Cement, PFA, or Lime Storage Silos

- Robust steel structure design with unlimited storage capacity.
- Dust filter, a hi-level alarm indicator with an extension rod, safety pressure lid and pinch valve.
- Discharge outlet with a flange to suit a screw conveyor.
- Fill pipe with a bell end and access manhole lid on top for convenient maintenance.
- Galvanised safety ladder, handrails and safety kick rail, all galvanised for secure access.

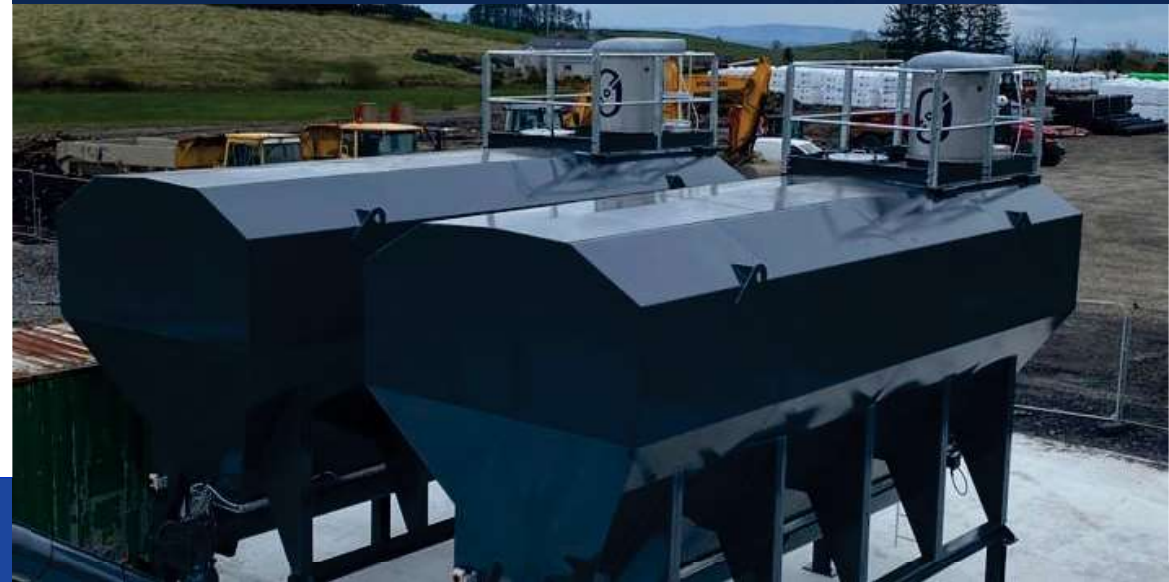
## Mobile Batching Plant Silos

Our Mobile Batching Plant and Silos are crafted with a meticulous attention to detail, reflecting four decades of hands-on experience and a track record of success. The proven design of our plants is a testament to their reliability, ensuring that our clients can depend on consistent and high-quality concrete production for their construction projects.



ESTABLISHED SINCE 1984  
BUILT TO LAST

**CABRAGHENG**



[www.cabragheng.com](http://www.cabragheng.com)



ESTABLISHED SINCE 1984  
BUILT TO LAST



Customers Include:





# CONVEYOR FLOW SYSTEMS

**Our Conveyor Flow Systems are reliable from a proven design that has withstood the test of time.**

**With four decades of manufacturing experience, we have fine-tuned the art of material handling, ensuring that our conveyor systems provide seamless and reliable transportation of materials, contributing to the production efficiency of our clients.**

## Lattice Conveyors

- Available as single units or in package flow systems.
- Versatile lengths from 3m to 30m and widths from 600mm to 1500mm.
- Troughing or flat return rollers with side skirting to minimize spillage.
- Lagged and crowned head drums.
- Motorized gearbox units.
- Wide range of safety features including pull cord systems for efficient and secure operations.
- Durable lattice design, reinforced with angle and channel stiffeners.
- CustomiSed support stanchions, safety catwalks, and pillar/plumber block bearings.

## Channel Belt Conveyors

- Available as standalone units or within package flow systems.
- Versatile lengths ranging from 3m to 30m and widths from 600mm to 1500mm.
- Troughing or flat return rollers with side skirting for spillage reduction.
- Lagged and crowned head drums.
- Motorized gearbox units.
- Wide range of safety features including cord systems for efficient and secure operations.
- Reinforced with angle and channel stiffeners for durability.
- Heavy-duty belt cleaning scraper, access safety catwalks, and safety guard to BS specification.
- Pillar and plumber block bearing sizes cater to the conveyor's length.

ESTABLISHED SINCE 1984  
BUILT TO LAST

  
**CABRAGHENG**



[www.cabragheng.com](http://www.cabragheng.com)



# CRUSHING & SCREENING SYSTEMS

ESTABLISHED SINCE 1984  
BUILT TO LAST

  
**CABRAGHENG**

## Crushers

**Our Crusher and Screening finished Plants deliver production volumes to suit customer demand and type of aggregate materials being processed.**

**These Crusher and Screening plants serve diverse industries with models designed for various materials and project requirements. Cabragheng Engineering's Crushing and Screening Plants embody durability, efficiency, and versatility, ensuring high performance in demanding applications.**

- Provider of new crusher units, conveyors, feeders, storage hoppers, and supporting structures.
- Designer of complete Crushing & Screening Plants
- Electrical control panels for crushing and screening plant production applications.

## Screeners

**Our Screener Systems redefine material screening with precision and efficiency. Whether separating aggregates, recycling materials, or processing minerals, our Screeners meet the highest standards. With customisable configurations, these systems adapt to the unique needs of different industries, enhancing productivity and material quality.**

- Vibratory screener systems suitable for static applications in the quarry and recycling sector.
- Screens can be used individually or sold separately.
- Available on mobile wheeled units.
- Vibratory screens are customisable to meet customer requirements.



[www.cabragheng.com](http://www.cabragheng.com)



# BLENDING PLANTS

For over four decades, customers have relied on our Blending Plants for various materials to produce concrete that meets and exceeds industry standards, contributing to the success of construction projects of all scales.

■ Highly durable design to withstand the rigours of the construction environment.

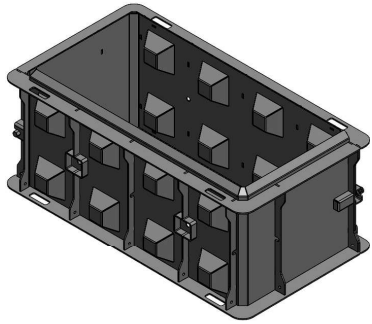
■ Engineered with efficiency as a top priority for optimised concrete production and return.

■ Wide range of options and configurations to cater to various project specifications.

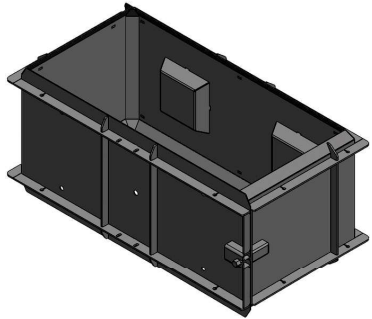
Our Blending Plants are crafted with precision and expertise, incorporating a design that has withstood the test of time. The 40 years of experience behind our products ensure that we deliver more than just concrete – we deliver a promise of consistency and high quality. Builders and contractors can rely on Cabragh Engineering's Blending Plants to produce various types of materials ie Aggregates, Coal and Sand that meets and exceeds industry standards, contributing to the success of construction projects of all scales.



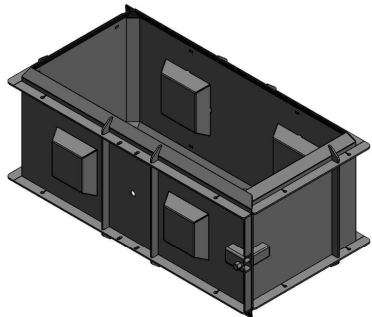
# KELLY BLOCK AND BARRIER MOULD RANGE



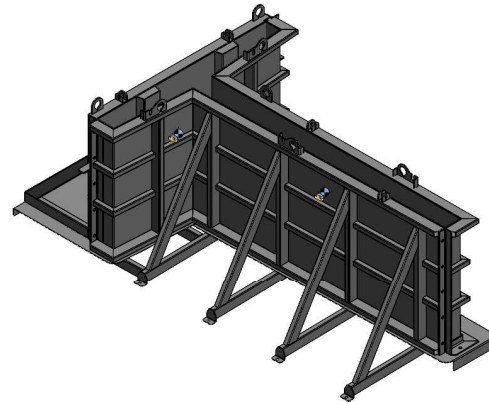
**Multi-Cup Mould**  
**Size Range Available**  
800x800x800  
1200x800x800  
1600X800X800  
2000x800x800



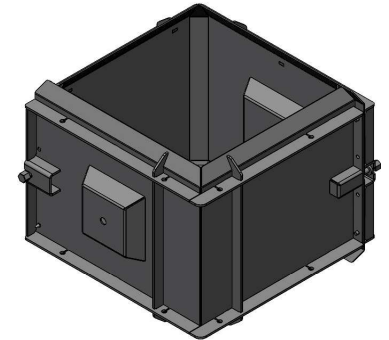
**Flat Top Mould**  
**BMF-1410-1**  
1410X680X700



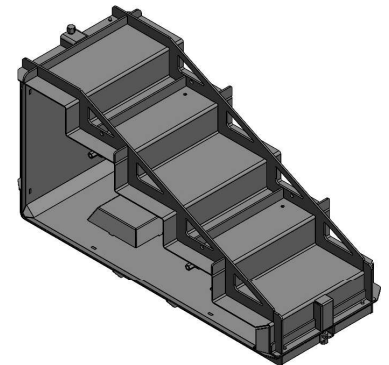
**Kelly Mould**  
**BMK-1410-1**  
1410X680X700



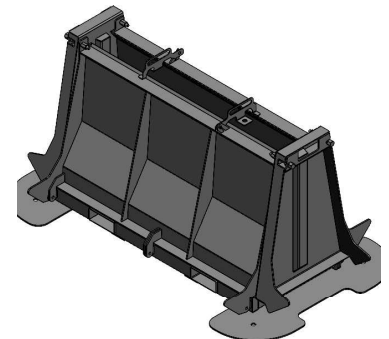
**T-Wall Mould**  
1200x1940x2980



**Half Mould**  
705x680x700



**Stair Mould**  
1410x680x700



**Barrier Mould**  
**BMB-1510-1**  
1510X600X800

# CONTACT US

## Metfinn Group HQ

ESTABLISHED SINCE 1984  
BUILT TO LAST



20 Farritor Road  
Dungannon  
BT70 1TL



N. Ireland  
+44 (0) 28 8776 7490



[info@cabragheng.com](mailto:info@cabragheng.com)



[www.cabragheng.com](http://www.cabragheng.com)