



PRECAST CONCRETE MACHINERY

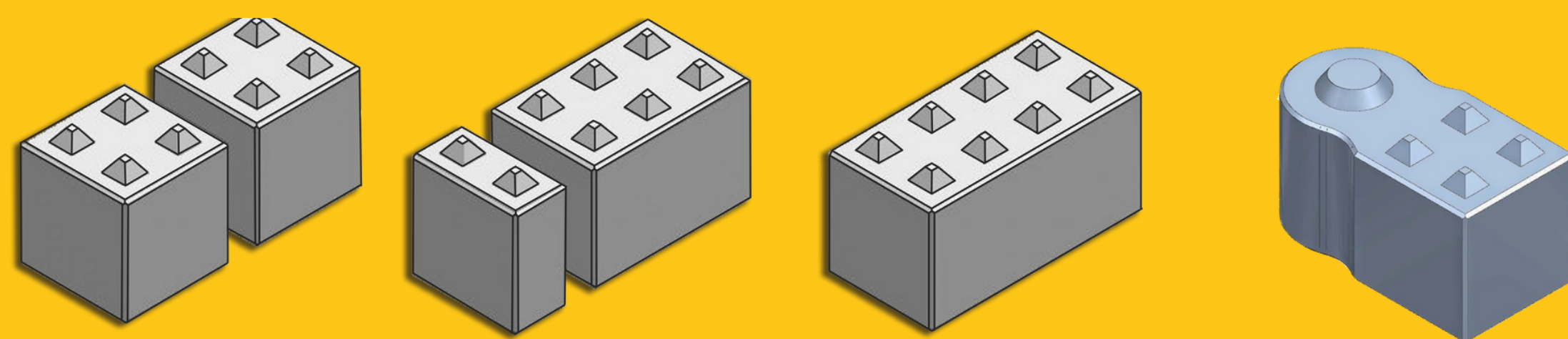


Interlocking Block Moulds

**"One of the most durable interlocking
moulds on the market"**



Simple to cast
using poker
vibration



The 8 nodule design
simplifies the
stacking process
and guarantee's a
tighter interlock.

1200x600x600 
1600x800x800 
1500x600x600
1800x600x600
1600x800x400
2400x600x600

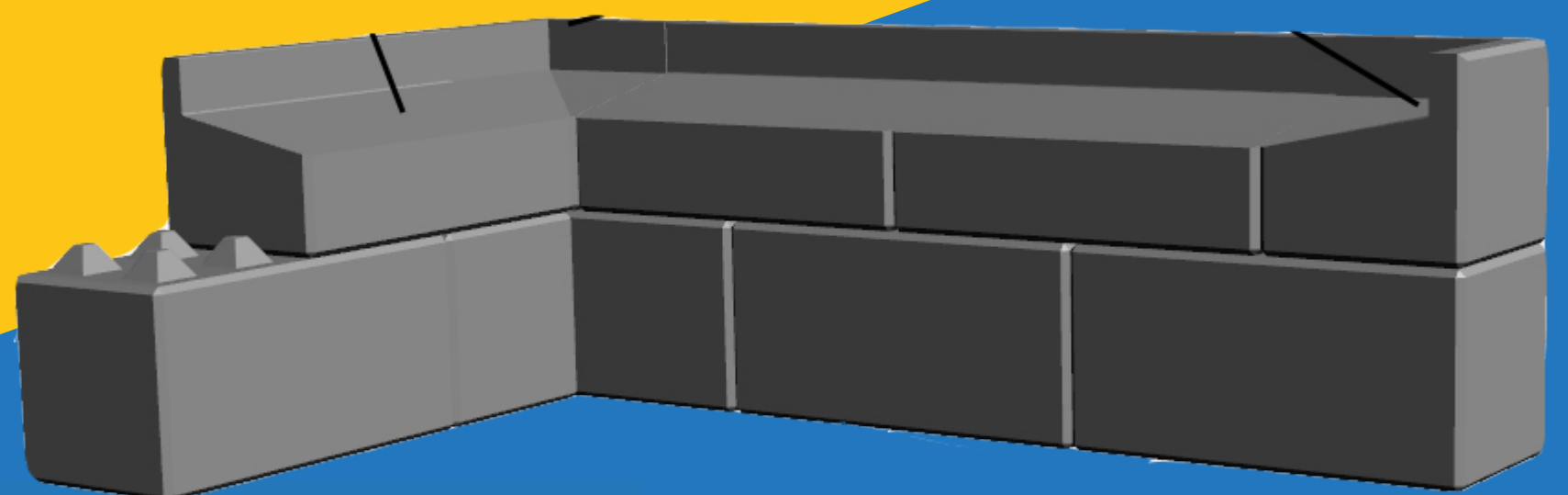
Types of moulds Available:

- Capping Moulds
- Front sloping Moulds
- Stepped Moulds
- Plain Top Blocks
- Dividers
- Multi-angle
- Buttress Style
- Forklift Inserts
- Custom Moulds

Useful For:

- Retaining Walls
- Storage Compartments
- Flood Defence
- Road Calming
- Grain / Aggregate Storage
- Security
- Much More!

The ideal solution
for leftover ready-
mix or waste
concrete.



www.coote.co.uk


+44 28 8556 8123



office@coote.co.uk