



HUMAN FORM RECOGNITION **CAMERA SAFETY SYSTEM**



HUMAN FORM
DETECTION CAMERA



INTERNAL & EXTERNAL
WARNING SYSTEMS



DURABLE IN ALL
WEATHER CONDITIONS



ONLINE DASHBOARDS
& HEATMAPPING



DEDICATED
PRODUCT SUPPORT



MEETS BALFOUR
BEATTY SPEC



MIRA TESTING
APPROVED

ABOUT **US**



VISIT OUR WEBSITE

Parksafe Group have been working with some of the largest fleets across the UK, Europe, and internationally for almost 40 years.

Specialising in vehicle safety equipment, Parksafe Group supply and manufacture a wide range of robust, reliable, and cost-effective solutions built to withstand the demanding conditions of off-highway environments. From construction and quarrying to agriculture and mining, our products enhance operator safety, reduce risk, and improve operational efficiency.

With decades of experience and industry knowledge, Parksafe Group provides tailor-made safety solutions designed around the unique challenges of off-highway vehicles and machinery ensuring compliance, performance, and peace of mind for every customer.



BRANDS WE WORK WITH



YOUR SAFETY DRIVES US



THE ON-SITE HUMAN FORM RECOGNITION SOLUTION **DESIGNED WITH OPERATORS IN MIND**

Parksafegroup's AI Detection System provides real-time alerts to help users, operators, workers and managers avoid collisions with humans – reducing the risk of injury and vehicle damage.

The system improves operator awareness by detecting both moving and stationary human forms, alerting the operator to potential hazards. A robust development process has ensured that the system is adaptable for different vehicle sizes: a single camera can be used on smaller machines, while larger vehicles can be fitted with a multi-camera setup for full 360° coverage.



An in-cab monitor displays the detection zones, clearly showing the person's location and proximity to the vehicle. This helps drivers to make quicker, safer decisions – especially in busy or confined areas. Our system can detect between two zones:

- **Outer Zone** (approx. 2 - 5 metres): Visual alerts are provided, alongside a beep-beep warning.
- **Inner Zone** (approx. 0 - 2 metres): The system provides both visual and audible alerts, "Pedestrian Detected [left/right/front/rear]" depending on the location of the human form.

Inner Zone alerts are also accompanied by a 10-second video clip, which is automatically uploaded to our secure Event Locker. These clips can then be reviewed and downloaded.

BENEFITS



FULLY COMPLIANT

Meets all specifications & regulations for Balfour Beatty.



KIT CUSTOMISATION

Choose from a range of options, hardware & fittings to suit your needs.



EVENT LOCKER

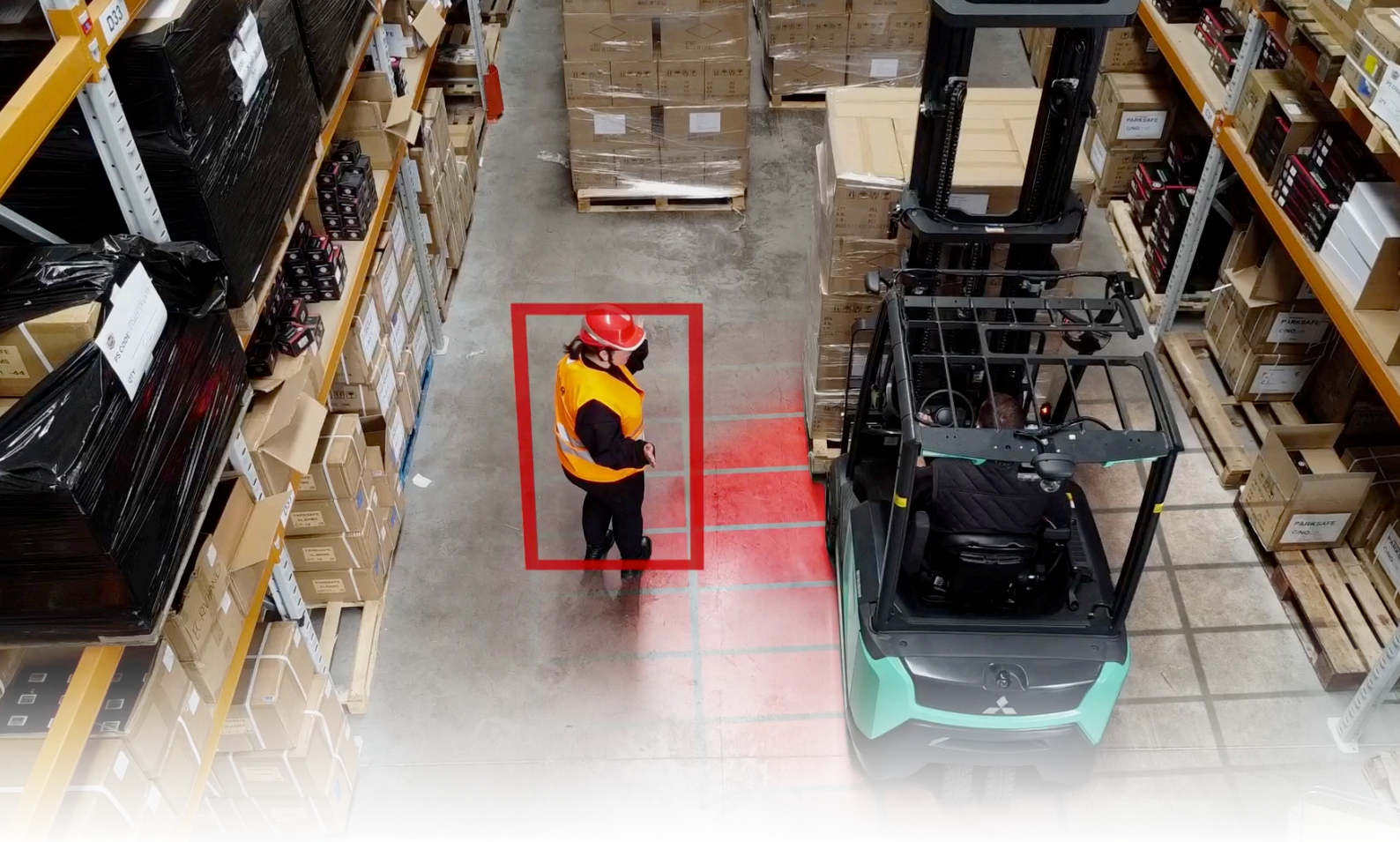
Easily download your video clips from our dedicated event locker.



EASY INSTALLATION

Pre-wired Plug & Play Loom offering cohesive, simple installs.





HOW DOES OUR **SYSTEM WORK**



THE CAMERAS

Our Full HD 1080p AI powered cameras are stitched to provide full detection zone coverage. Choose from 150° or 200° viewing angle and oval or square housing.



LED PEDESTRIAN DISPLAY

Our LED Display indicator provides a red warning arrow when a human presence is in the detection zone, and a green display when the zones are clear.



LED THUMBS UP

The LED Thumbs Up sign can be activated when the vehicle is at a safe stop to display to workers that is safe to approach the vehicle.



AUDIBLE & EXTERNAL LED ALARMS

The system provides both audible and LED alarms, “beep, beep” to “pedestrian detected [left/right/front/rear]” to alert the driver depending on the location of the worker.

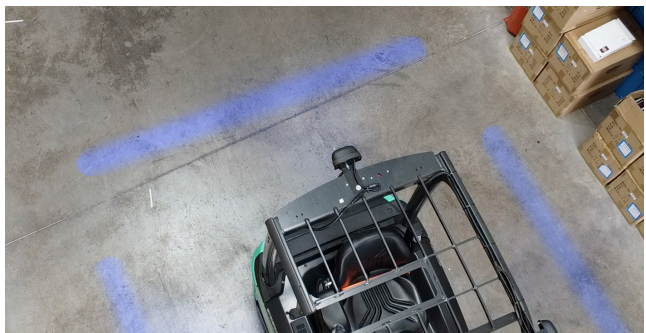
OPTIONAL EQUIPMENT



IN-CAB MONITOR

Our in-cab monitors provide a clear view for the operator, aiding maneuverability and allowing them to quickly assess dangers and risks.

Choose from 7" - 10" screen sizes, touch screen and waterproof options.



ZONAL LIGHTS

Applying Zonal lighting helps surrounding workers to visualise danger zones, which are aligned with the cameras detection zone.



DIGITAL VIDEO RECORDER - DVR

Installing a DVR enables remote access to footage, with automatic event uploads and heat mapping capabilities, thanks to its integration with our On Demand platform.

10-second video clips triggered by Inner Zone alerts are automatically uploaded to our secure Event Locker.

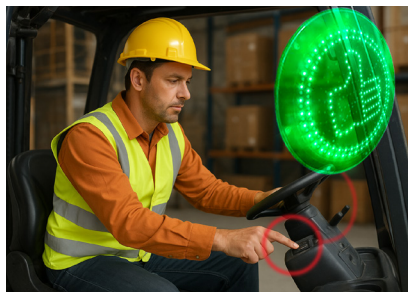
The DVR can also be remotely activated even when the vehicle's ignition is off.

OUR BESPOKE ACCESSORIES



PLUG & PLAY LOOMS

Designed in-house, our unique quick connect Plug & Play loom has been specifically engineered to simplify wiring and reduce installation time.



SWITCH PANEL

When pressed, the switch panel activates a green thumb signal indicating it's safe to approach the vehicle - once the vehicle has come to safe stop. A key switch mutes the external LED from 11.30pm - 7.00am.



BRACKETS

This non-destructive method protects the vehicle's integrity while allowing for a safe, secure and reliable installation.

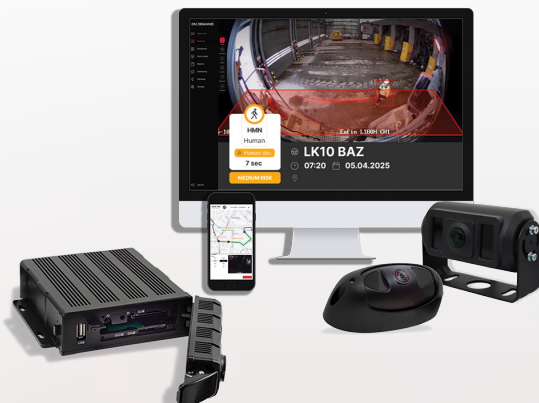
ON DEMAND

DRIVE SMARTER WITH **ON DEMAND TELEMATICS**

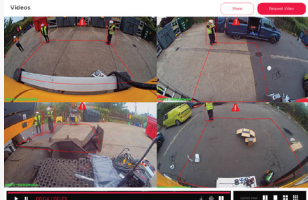
Parksafe Group's *On Demand* platform is a powerful, cloud-based tool designed to give owners, users, operators and managers complete visibility and control over their vehicles both in real-time and historically.

The platform offers live HD video streaming, remote video downloads, and detailed safety reports, helping operators and drivers stay informed and proactive. By monitoring data from the machinery, our *On Demand* platform ensures fleets remain compliant with safety standards while maximising operational efficiency.

Users can generate automated incident reports that highlight trends, identify risk factors, and inform targeted training.

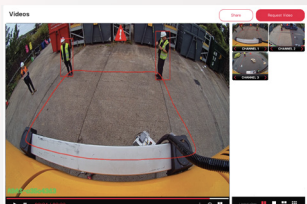


VIDEO - LIVE LOOK UP



Effortlessly scroll through video footage remotely, allowing operators to quickly navigate back and forth for seamless review of on-site incidents.

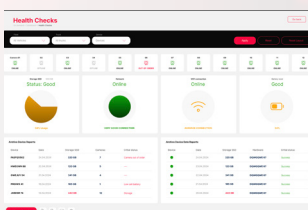
EVENT LOCKER / AUTO VIDEO UPLOADS



The Event Locker is a dedicated folder for all video downloads, featuring snapshot stills and 10 second video clips in sub-stream format.

Easily download clips into Full HD 1080p crystal clear footage.

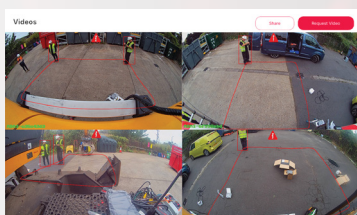
HEALTH CHECKS



Easily generate detailed reports and set up automated email alerts covering key vehicle metrics like SSD status, power loss, monitor performance, and camera functionality.

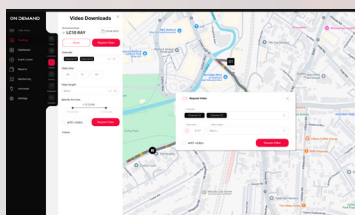
Our intuitive colour-coded Health Check Overview - **GREEN** for healthy and **RED** for issues - highlights potential problems at a glance, helping you identify issues early and keeping your fleet running at peak performance.

LIVE VIDEO



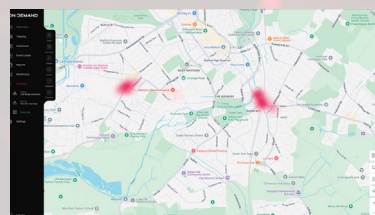
Easily view live video footage with a single click.

REQUEST VIDEO



Easily request video footage with just one click.

HEAT MAPPING



Real-time heat maps are generated to highlight risk zones.

NATIONWIDE INSTALLATIONS

Parksafe Group offer a full fitting installation service. Our Parksafe Group Approved Installers offer a network of professional engineers, who are driven by providing the highest standards of installation services and support across the UK, Europe and the rest of the world.



Our Parksafe Approved Installers have been carefully hand picked for their technical knowledge, fitting capabilities and customer service. Our highly skilled engineers can install any safety equipment from Human Form Recognition and 360° Safety Systems to AI cameras, Radars and DVRs. Backed up by our knowledgeable Customer Service Team, Parksafe Group provides an efficient installation service from start to finish. We aim to exceed the installation needs of our customers, offering complete turnkey planning, project management, customer support, engineering and vehicle integration expertise.

CONVENIENCE

Our extensive network of engineers will install your equipment at any location convenient to you. If you have several vehicles, we understand that keeping them operating is of prime importance so we'll happily arrange installation around your schedule to minimise downtime.

QUALITY

All our engineers are experienced and fully qualified specialists, who are insured to work on any vehicle and machinery. All new equipment is tested and fully demonstrated before we leave.



QUALIFIED
INSTALLERS



QUALITY
ASSURED



END TO END
SOLUTIONS



HIGHLY
RELIABLE



GLOBAL
COVERAGE



CUSTOMER
SUPPORT

ZONE AI

BY PARKSAFE GROUP

Parksafe Group
Headstock Industrial Park,
Merchants Way,
Watnall,
NG16 1AA

WEB: PARKSAFEGROUP.COM
EMAIL: sales@parksafegroup.com
TEL: 0115 896 5311

