



TIMKEN® SPHERICAL ROLLER BEARING SOLID-BLOCK HOUSED UNITS

BUILT FOR TOUGH CONDITIONS

Today's industrial operations depend on housed units to keep equipment running — particularly in harsh, high-contamination environments.

Timken offers a comprehensive range of precision-machined solid-block housings with multiple shaft-locking options and sealing solutions. Each unit is equipped with Timken high-performance spherical roller bearings.

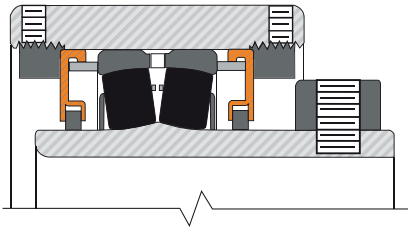


- **Advanced multi-point seal design.** Designed for reliable performance in heavily contaminated environments.
- **Comprehensive range of housing configurations.** Designed to interchange with most solid-block housed roller bearing units.
- **Efficient made-to-order manufacturing.** Fast delivery of application-specific configurations.
- **Increased uptime.** Robust steel housings, multiple sealing options and high-performance Timken spherical roller bearings help reduce downtime.
- **Bidirectional shaft expansion capability.** Double-nut expansion housing design allows field conversion from fixed to floating in either direction.
- **One-time shaft alignment.** Machined mounting feet allow precise installation and easier future unit replacement.
- **Accommodates shaft misalignment.** Bearings accommodate up to $\pm 1.5^\circ$ of shaft misalignment. Greater misalignment may be possible in light-load applications. Contact your Timken engineer for details.
- **Wide range of available sizes.** Accommodates shaft diameters from 35 mm to 380 mm.
- **Protection against over-lubrication.** Pressure relief valves are standard when units are ordered with non-purgeable seal options.

LOCKING, HOUSING AND SEALING OPTIONS TO MEET YOUR APPLICATION REQUIREMENTS

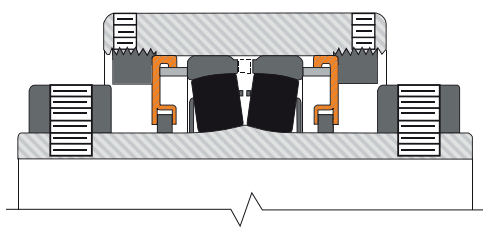
LOCKING CONFIGURATIONS

Choose the locking configuration that fits your application. Timken solid-block housed units are interchangeable with many other housed unit designs, while providing the superior strength of solid-block housings.



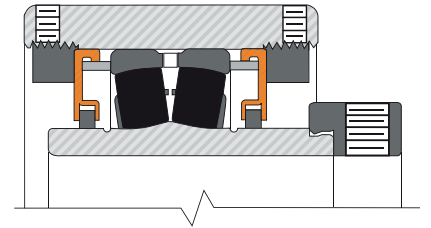
CL Series – Single Set Screw Lock

- Heavy-duty.
- Simple installation.
- Minimal runout.



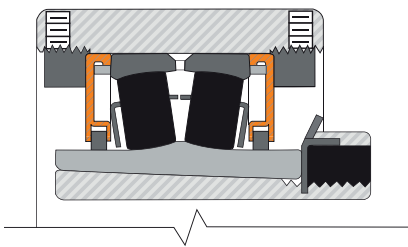
CL Series – Double Set Screw Lock

- Extra heavy-duty.
- Simple installation.
- Increased holding power.



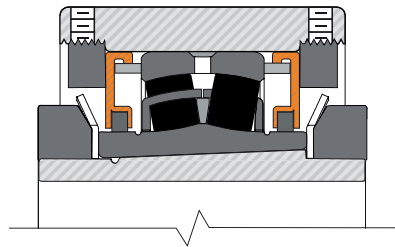
EC Series – Eccentric Lock

- Heavy-duty.
- Increased shaft holding power.
- Reduces shaft damage under extreme shock loads.
- Designed not to release in reversing applications.



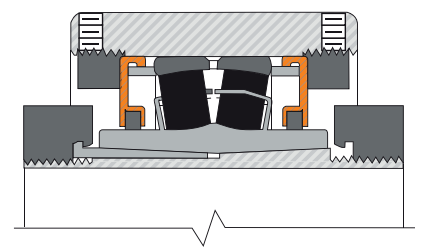
TA/DV Series –Tapered Adapter Lock

- Extra heavy-duty.
- 360 degrees shaft holding.
- Accommodates undersized shafting.



TAA/DAA – Double Nut Tapered Adapter Lock

- Extreme heavy-duty.
- Increased shaft contact.
- Accommodates undersized shafting.
- Easy to install without need to measure internal clearance.
- Mechanical withdrawal for easier removal.
- Larger bearings and higher load rating compared to competitive products having same bore size.

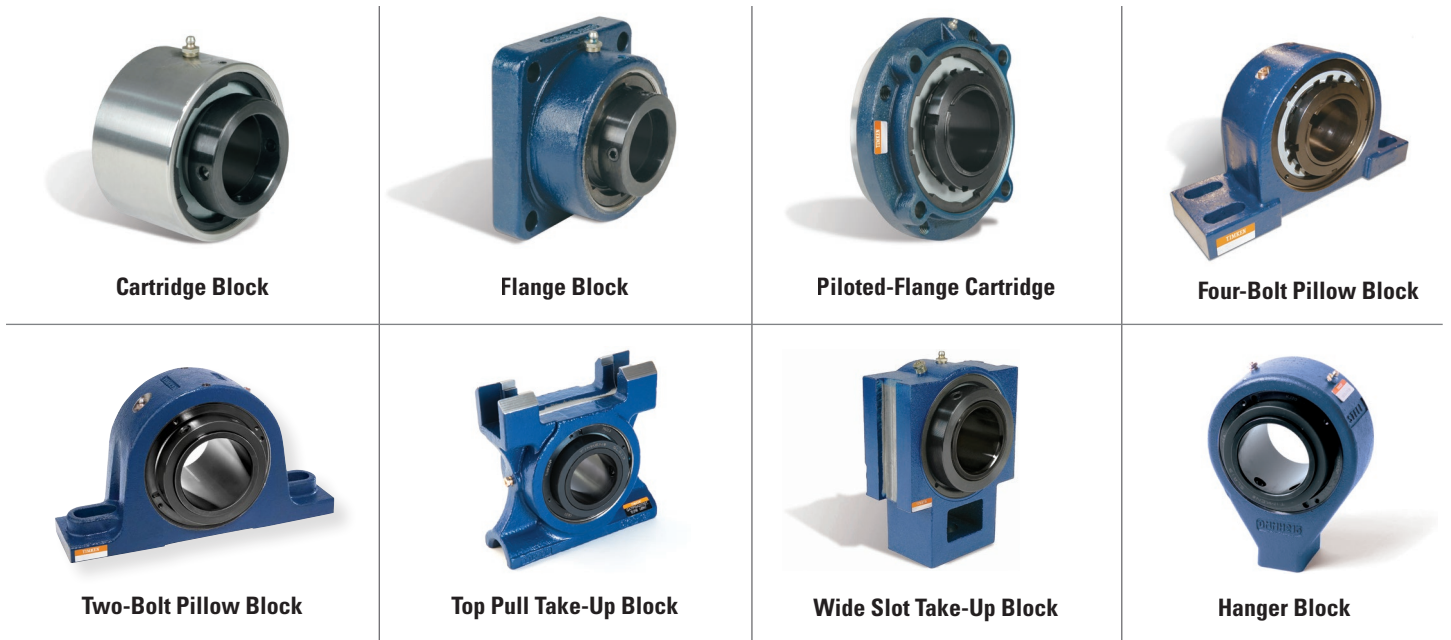


**V-Lock Series – Double Taper Lock
(U.S. Pat. No. 7344313)**

- Extreme heavy-duty.
- 360 degrees shaft holding.
- Designed to eliminate over-tightening.
- Mechanical withdrawal for easier removal.
- Larger bearings and higher load rating compared to competitive products having same bore size.

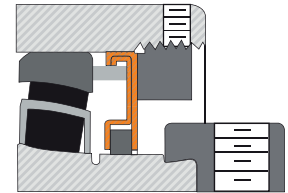
HOUSING STYLES

Solid steel housings from Timken are designed for long service life and smooth operation. Precision manufacturing processes with tight tolerances and robust design features produce durable, high-quality housings. Machined mounting feet and tapped puller holes simplify installation and removal.



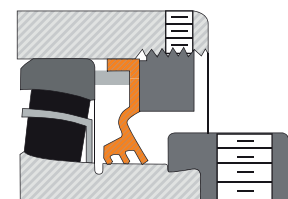
SEALING OPTIONS

Timken experts can help you select the right locking style and seal for your needs. Contact your Timken sales engineer for assistance.



Labyrinth Seals – DuPont™ Teflon®

- For high-speed applications.
- Superior in heavily contaminated conditions.
- Able to operate at high temperatures.
- Resistant to most chemicals.
- Abrasion-resistant.

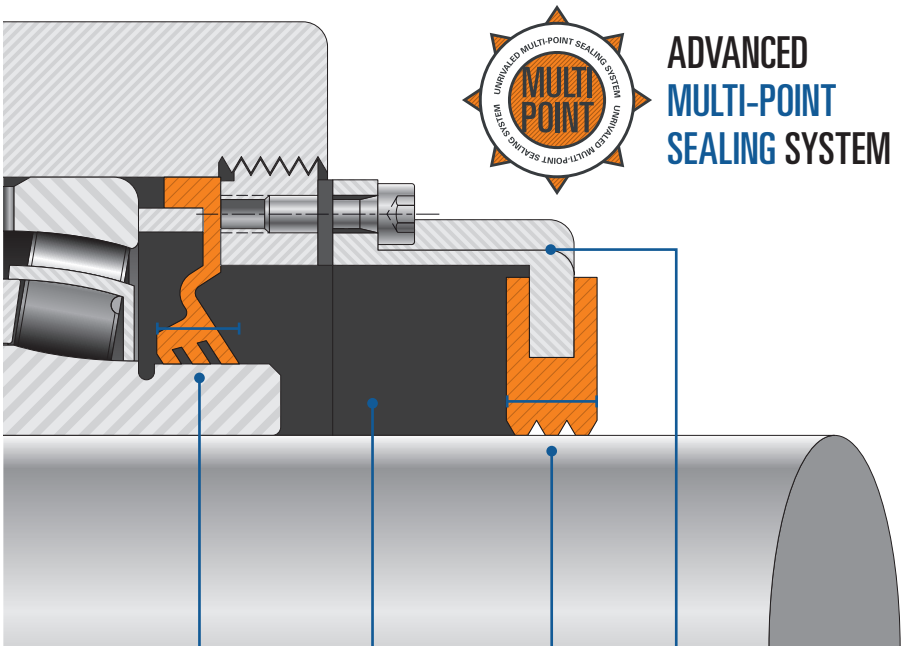


Triple-Lip Seals – Nitrile

- Self-purging.
- Excellent in wet and dirty applications.
- Chemical- and corrosion-resistant.

Triple-Lip Seals – Urethane

- All the benefits of Nitrile, plus more resistant to abrasion.



ADVANCED MULTI-POINT SEALING SYSTEM

Triple lip internal seal (rubber, viton, or urethane)

Full grease pack in cover (all covers have grease zerks)

Triple lip external rubber through-shaft seal*

External through shaft cover (urethane or steel)

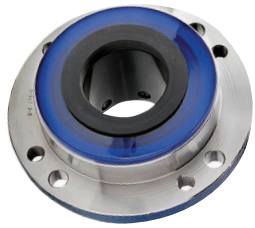
$$3 + 1 + 3 + 1 = 8$$

*steel has single lip Teflon seal for 6 point sealing

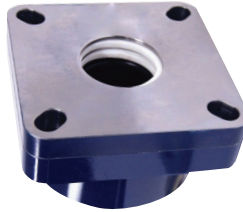
EXTERNAL AUXILIARY SEALS

BACKING PLATES

Provide an additional sealing barrier for flange block and piloted-flange cartridge units requiring secondary sealing from the back side of the housing.



Urethane



Solid Steel

URETHANE COVERS

Can be filled with grease to create an additional barrier that helps prevent contaminants from reaching the primary seal.



OPEN

Available with triple lip contact seal



CLOSED

Completely enclosed with grease cavity

STEEL COVERS

Made from black oxide-treated steel to provide durable protection against abrasive particle contamination and corrosion. They can also be filled with grease to create an additional protective barrier.



OPEN

With Teflon labyrinth seal



CLOSED

Completely enclosed with grease cavity

DESIGNED FOR HARSH CONDITIONS

Enhanced Bearing Protection. Harsh operating environments and lubrication issues often lead to damage in housed unit bearings. Timken® solid-block housed units provide additional protection with primary and secondary sealing options, including steel covers sized to fit all Timken solid-block housed units. The space between the primary and secondary seals forms a grease-filled cavity for additional protection.

Accommodates Shaft Misalignment. Without proper shaft alignment, the service life of housed units can decrease. Timken solid-block housed units operate efficiently on shafts with up to $\pm 1.5^\circ$ of misalignment, thanks to their robust design and Timken® spherical roller bearings.



TIMKEN

The Timken team applies their know-how to improve the reliability and performance of machinery in diverse markets worldwide. The company designs, makes and markets bearings, gear drives, automated lubrication systems, belts, brakes, clutches, chain, couplings, linear motion products and related industrial motion rebuild and repair services.

Stronger. By Design.

www.timken.com