



ELECTRICAL PANEL FIRE SUPPRESSION

INTRODUCTION



Protecting people and assets from fire is our business.

That's why businesses across the UK trust our automatic systems to protect their electrical panels and prevent fire related disruptions to operations.

Our customers rely on our systems to watch over their assets 24/7.

This is especially crucial in unattended areas, where an electrical fire could cause major disruption or downtime.

From customer service to our engineers, the Fireward team is dedicated to keeping your people, panels, and operations safe.

Protecting People & Assets 24/7

WORLD LEADING FIRE PROTECTION SYSTEMS

Tested to the most rigorous standards, our systems provide outstanding performance and exceptional quality.

Backed by our no hassle-free warranty, you can count on our automatic fire suppression systems to protect your assets.

WHY FIREWARD SYSTEMS?



- Fully automatic fire suppression
- No external power required
- LPS 1666 accredited
- UL 2166 listed
- 24/7 protection
- 10 year cylinder lifespan



RISK AREAS

1

LOOSE OR DAMAGED WIRING:

can cause short circuits and arcing, sparking fires

2

OVERLOADED CIRCUITS:

generates excess heat, increasing fire risk inside the panel

3

POOR VENTILATION:

causes components to overheat, especially in enclosed areas

4

LACK OF MAINTENANCE:

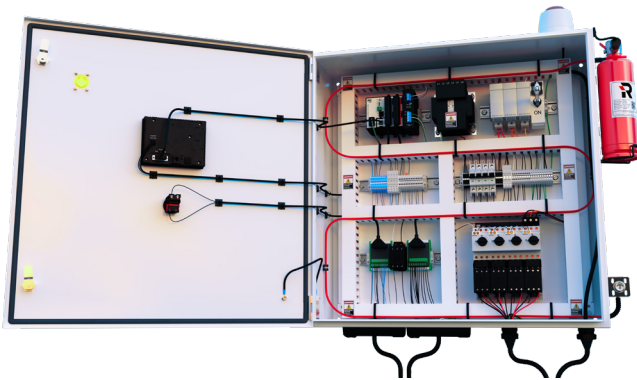
leads to faults that escalate into serious fire hazards

5

DUST OR MOISTURE INGRESS:

compromises insulation and causes tracking or corrosion

CLEAN AGENT PROTECTION

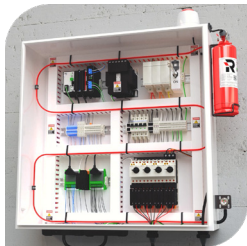


Scan the QR code
to see our system
in action

UL 2166 LISTED CLEAN AGENT TECHNOLOGY

- Targets fire at the source
- No post fire clean-up required
- Rapid fire detection and suppression
- Utilising electrically non-conductive agent

HOW DOES IT WORK?



1

Reacton 1230 clean agent, pneumatic detection tube and optional extras installed



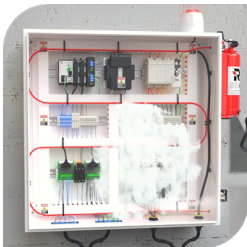
2

In this instance, a fuse failure triggers the fire inside the electrical panel, likely due to overheating or electrical arcing.



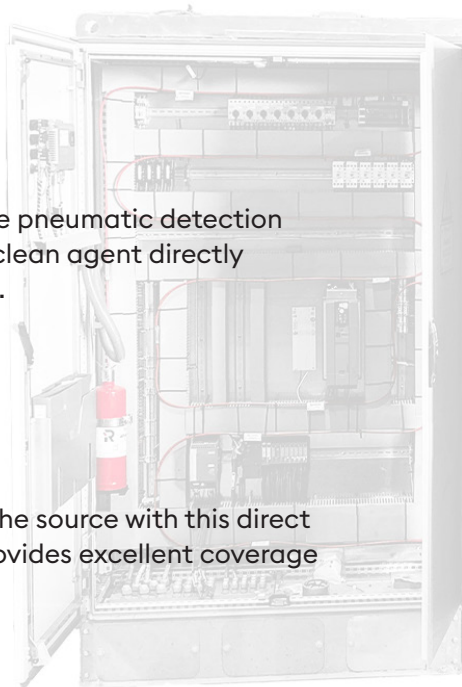
3

The flames rupture the pneumatic detection tubing, releasing the clean agent directly through the burn hole.



4

The fire is tackled at the source with this direct system, which also provides excellent coverage to prevent spread.



OPTIONAL EXTRAS

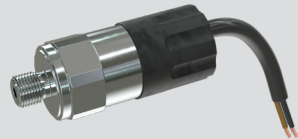
1 END OF LINE GAUGE

Provides system pressure indication at multiple locations on the equipment and serves as a commissioning point.



2 PRESSURE SWITCH

Provides ultimate reliability for all of your monitoring requirements and connection to building management system.



SOUNDER BEACON

3



Provides an audible and visual indication that the system has been activated.

Whether you require a single installation or have multiple large scale projects, our expert team are on hand to tackle any challenge.





Contact us to today to find out how Fireward can help protect your business critical assets and personnel.

