



Trackit247

LIVE FLEET TRACKING



Fleet Tracking

A powerful GPS tracking solution
to closely monitor your fleet
vehicles and drivers' behavior.

ABOUT **TRACKIT247**

We provide innovative, real time, affordable GPS Fleet tracking to help you monitor your vehicles, assets and staff.



INNOVATIVE **CONTROL**

Our innovative web-based control panels have been designed for business owners, operations professionals and fleet managers to effectively and efficiently manage their assets, vehicles, drivers, and equipment from one simple dashboard.

MAKING IT **SIMPLE**

Our nationwide network of installation engineers can arrange a suitable time to install your tracking devices, and we provide training on how to best use your tracking dashboard.

FLEXIBLE PAYMENTS

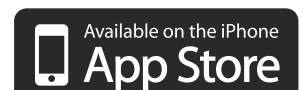
We give you flexible buying options with low monthly payments, or alternatively no upfront costs with higher monthly payments over an agreed length of time.

TRACK EUROPE WIDE

Our units work across most European countries without any extra charges. Need to track in countries outside of Europe? Please contact us to enquire.

MOBILE **TRACKING**

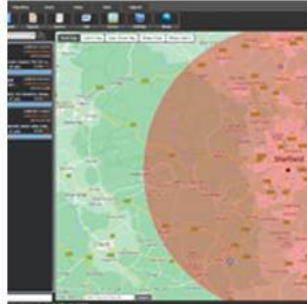
Have full functionality of your control panel from any internet enabled device via a browser, or download our iOS / Android app - so you can access your important information anywhere.



ADVANCED FEATURES

GEO FENCE ZONES

Quick, easy & unlimited setup of custom geo-fence zones. These can send email, SMS, or push alerts to up to 3 contacts if any tracker leaves or enters the zone.



ROUTING TRACKER

View the route from your tracker to any post code, or any other tracker in your account. You can also view the closest device from your selected location.



LIVE TRAFFIC

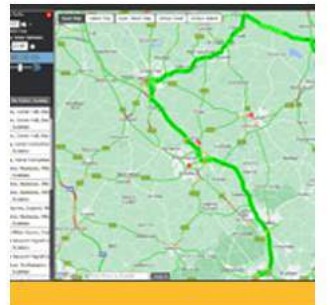
View live traffic information on all major roads, with just one click.

- GREEN** – Clear traffic
- YELLOW** – Slow traffic
- RED** – Heavy traffic



JOURNEY HISTORY

View a detailed breakdown of tracking history from the past 12 months - including location, date, time, speed, distance and voltage/battery level information.



LIVE VISUAL REPORT

View a detailed, live snapshot of all vehicle information and driver behavior from each tracker from the last 30 days, all on one screen.



FLEET EFFICIENCY

Quickly view and compare a selection of drivers' behaviors in a clear and easy format, which can be printed or saved to file.



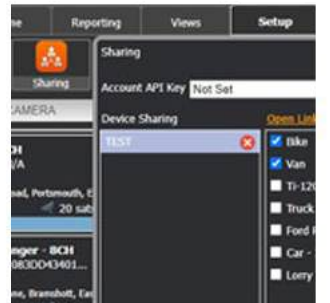
DETAILED REPORTS

A range of reports allow you to analyse your fleet of vehicles and see detailed statistics on driving behavior, vehicle usage, mileage, start/stops, and more.



SHARE TRACKERS

Create custom links to allow stakeholders to view any tracker, without having to create an account or give them access to your other fleet information.



LIVE VIEW DASH CAMERAS

Pair up your tracker with a Live Viewing Dash Camera & have Trackit247 retrieve footage for you remotely



EC26 LIVE 4G DASH CAMERA

The EC26 Live 4G Dashcam is a 2 channel 1080p dash camera with a front and internal viewing camera. It's ideal for any car, van or HGV and you can choose from a 128gb or 256gb SD card. It also comes with a multi network sim card used to stream the footage through our Asset or Fleet platform.

EC25 LIVE 4G DASH CAMERA

The Trackit247 EC25 Dash Camera is a high performance front and internal dashcam; offering a wide 130° field of vision, internal night vision & Live View compatibility, with Live GPS included!



3 & 4 CHANNELS AVAILABLE

Rear Number Plate Camera 1080P/720P



Standard 1080p/720p Rear Camera



The internal cameras are OPTIONAL, they can be turned off or adjusted to turn away.

We also provide a fleet or leaflet tracking control panel with a range of tracking devices available to meet all of your personal or business requirements.

Please get in touch to enquire or book a demo