

# GESSMANN®

## One Control Console – *unlimited possibilities*

The C1 control console has been designed to give our customers maximum design flexibility and configuration options. The design is based on a compact format which can be upgraded with additional modules.

The modular design enables individual placement of joysticks, keypads, displays and control devices. The C1 control console can therefore be completely adapted to your product and branding.



### Multiple control elements for maximum customization

The versatility of the system enables it to meet the most diverse requirements of agricultural machines, construction machines and industrial machines. The integration of control elements and displays, combined with a high degree of ergonomics and design options, makes the C1 control console a future-oriented solution for machine control.

### Discover more Gessmann products!



## GESSMANN®

-  Over 90 years of experience and quality
-  World market leader industrial joysticks
-  Steady growth worldwide

### W. Gessmann GmbH

Eppinger Street 221  
74211 Leingarten

Siemensstraße 17  
74193 Schwaigern

Phone +49 7131 40 67-722  
sales@gessmann.com  
www.gessmann.com

W. Gessmann GmbH | Stand: 03/25

# GESSMANN®



## C1 CONTROL CONSOLE

EN

GESSMANN

WWW.GESSMANN.COM

WWW.GESSMANN.COM

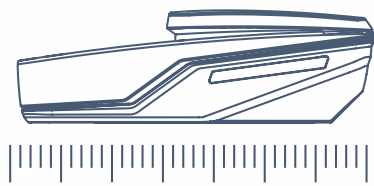
## C1 control console in practice

The C1 control console is a perfect example of Gessmann's commitment to offering customized solutions that are both functional and esthetically pleasing.



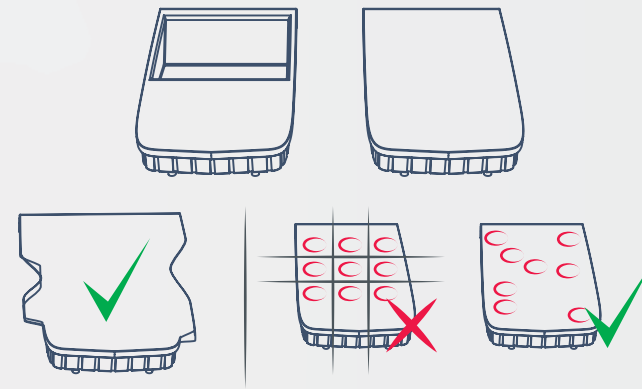
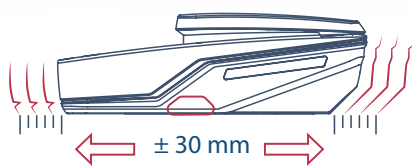
### Compact

Length: 520mm  
Width: 160mm  
Height: 100 - 150mm



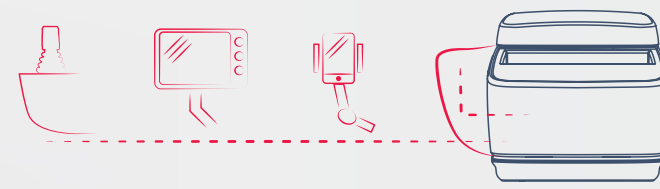
### Horizontal adjustment

Length: +/- 30mm



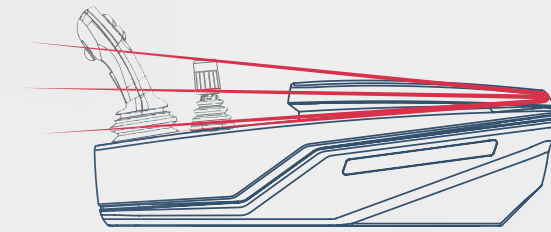
### Basic insert plate

The two basic insert plates offer a maximum choice of control devices and positioning of such devices. There are no predefined grids or slots that would restrict you from positioning.



### Upper part of housing

When developing the slim and robust housing, special care was taken to ensure that it could grow with your needs.



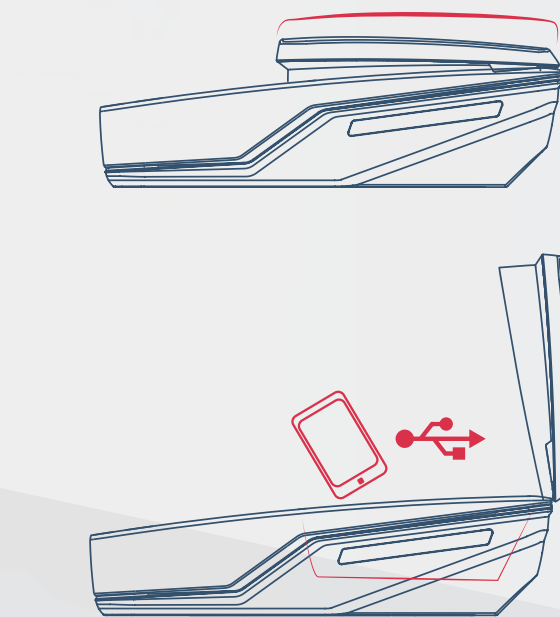
### Armrest and storage compartment

The height of the armrest is adjustable in different steps and thus adapts to the installation conditions individually.

The ergonomic arm pad ensures the operator a comfortable and fatigue-free work.

**Customer specific arm pads:**  
Shape and Shore hardness can be customized.

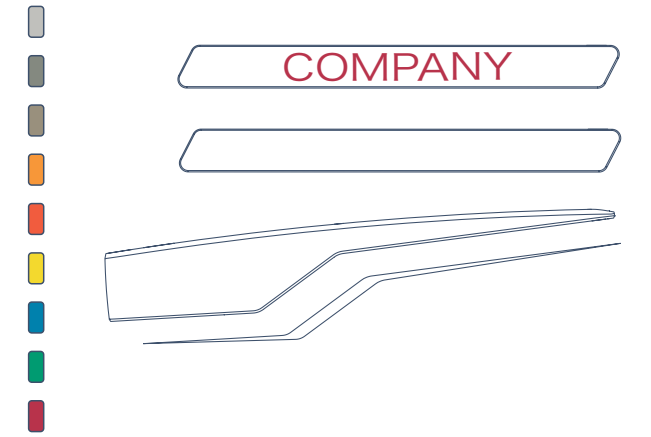
Under the armrest there is a generous storage compartment. This is equipped with a powerful dual USB socket.



### Get creative

Insert plate in neutral, colored with and without company logo possible. Optionally also illuminated.

Combine the color of the upper part of housing and decorative stripes. Decorative strip can be optionally illuminated.



### Lighting

