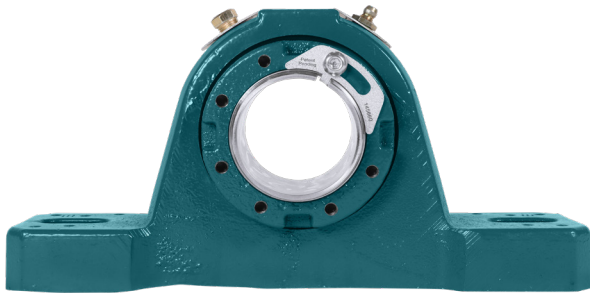


MOUNTED SPHERICAL ROLLER BEARINGS

# Safety Mount<sup>®</sup> ISN

## SN-dimensioned solutions for easy installation and removal

Safety Mount ISN mounted spherical roller bearings are the drop-in replacement solution to traditional SN-dimensioned products. ISN bearings are engineered with a patented tapered adapter for easier, faster installation and removal without damaging the shaft. Each ISN bearing arrives completely assembled and pre-lubricated to be shaft-ready out of the box—eliminating unnecessary hassle while saving you valuable time and money. As part of the Dodge<sup>®</sup> mounted roller bearing legacy that spans over 100 years, ISN bearings are the long-lasting solution for a variety of applications to keep your operations up and running.



### ISN

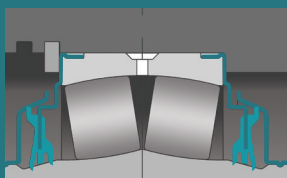
- Factory greased and sealed
- Initial grease included with bearing
- Arrives as a fully-assembled, shaft-ready unit
- Constant seal pressure in misaligned conditions
- Seal and housing design retains grease near rollers
- Simple clearance setting, no special tools needed
- Easy, intuitive removal with included dismount mechanism

### Standard SN

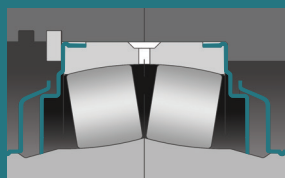
- User packs grease, subject to onsite contamination
- Customer pays extra for initial grease fill
- Individual parts in three or more packages, user-assembled
- Diminished seal pressure in misaligned conditions
- Grease migrates away from rollers to housing cavity
- Requires feeler gauges and experience assembling mounted bearings
- Difficult to remove with no built-in dismount mechanism

### Premier sealing solutions

The Trident™ triple-lip contact seal is mechanically retained and is extremely effective for dirty, low- to medium-speed applications. For high-speed and high-temperature applications, a labyrinth seal option is available.



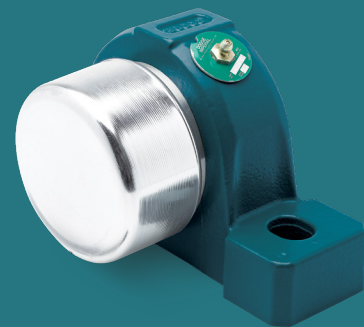
Trident seal



Labyrinth seal

### End covers

When protection from rotating equipment is needed, easy-to-install end covers are available and help prevent contaminants from coming in contact with the seal.



# Competitive interchanges for SN-dimensioned bearing units

Dodge units listed below match critical dimensions of SN-dimensioned bearings. Additional sizes are available upon request.

## Non-expansion (fixed)

Bore (mm)	Dodge Safety Mount ISN		SKF®					SYNT	Schaeffler® FAG®		Timken® QM®	
	Part number	Description	SNL		Adapter	Locating ring	Seal		Housing	Bearing	Single V-Lock®	Double V-Lock
			Housing	Bearing								
<b>With rubber contact seal</b>												
30	071000M	P2B507-ISN-030MFR	SNL507	22207 EK/C3	H 307	FRB 5.5/72	TSN 507 L	—	—	—	—	
35	071001M	P2B508-ISN-035MFR	SNL508	22208 EK/C3	H 308	FRB 8/80	TSN 508 L	SYNT 35 F	—	—	—	
40	071002M	P2B509-ISN-040MFR	SNL509	22209 EK/C3	H 309	FRB 3.5/85	TSN 509 L	SYNT 40 F	SNV080	22209 K	—	
45	071003M	P2B510-ISN-045MFR	SNL510	22210 EK/C3	H 310	FRB 9/90	TSN 510 L	SYNT 45 F	SNV090	22210 K	—	
50	071004M	P2B511-ISN-050MFR	SNL511	22211 EK/C3	H 311	FRB 9.5/100	TSN 511 L	SYNT 50 F	SNV100	22211 K	QVSN11V050SM	QVVS11V050SM
55	071005M	P2B512-ISN-055MFR	SNL512	22212 EK/C3	H 312	FRB 10/110	TSN 512 L	SYNT 55 F	SNV110	22212 K	QVSN13V055SM	QVVS13V055SM
60	071006M	P2B513-ISN-060MFR	SNL513	22213 EK/C3	H 313	FRB 10/120	TSN 513 L	SYNT 60 F	SNV120	22213 K	QVSN13V060SM	QVVS13V060SM
65	071007M	P2B515-ISN-065MFR	SNL515	22215 EK/C3	H 315	FRB 12.5/130	TSN 515 L	SYNT 65 F	SNV130	22215 K	QVSN15V065SM	QVVS15V065SM
70	071008M	P2B516-ISN-070MFR	SNL516	22216 EK/C3	H 316	FRB 12.5/140	TSN 516 L	SYNT 70 F	SNV140	22216 K	QVSN17V070SM	QVVS17V070SM
75	071009M	P2B517-ISN-075MFR	SNL517	22217 EK/C3	H 317	FRB 12.5/150	TSN 517 L	SYNT 75 F	SNV150	22217 K	QVSN17V075SM	QVVS17V075SM
80	071010M	P2B518-ISN-080MFR	SNL518	22218 EK/C3	H 318	FRB 12.5/160	TSN 518 L	SYNT 80 F	SNV160	22218 K	QVSN20V080SM	QVVS20V080SM
85	071011M	P2B519-ISN-085MFR	SNL519	22219 EK/C3	H 319	FRB 12.5/170	TSN 519 L	SYNT 85 F	SNV170	22219 K	QVSN20V085SM	QVVS20V085SM
90	071012M	P2B520-ISN-090MFR	SNL520	22220 EK/C3	H 320	FBR 12/180	TSN 520 L	SYNT 90 F	SNV180	22220 K	QVSN20V090SM	QVVS20V090SM
100	071013M	P2B522-ISN-100MFR	SNL522	22222 EK/C3	H 322	FRB 13.5/200	TSN 522 L	SYNT 100 F	SNV200	22222 K	QVSN22V100SM	QVVS22V100SM
110	071014M	P2B524-ISN-110MFR	SNL524	22224 EK/C3	H 3124	FRB 14/215	TSN 524 L	SYNT 110 F	SNV215	22224 K	QVSN22V110SM	QVVS22V110SM
115	071015M	P2B526-ISN-115MFR	SNL526	22226 EK/C3	H 3126	FRB 13/230	TSN 526 L	SYNT 115 F	SNV230	22226 K	QVSN26V115SM	QVVS26V115SM
125	071016M	P2B528-ISN-125MFR	SNL528	22228 EK/C3	H 3128	FRB 15/250	TSN 528 L	SYNT 125 F	SNV250	22228 K	QVSN28V125SM	QVVS28V125SM
135	071102M	P2B530-ISN-135MFR	SNL530	22230 EK/C3	H 3130	FRB 16.5/270	TSN 530 L	—	SNV270	22230 K	—	—
140	071106M	P2B532-ISN-140MFR	SNL532	22232 EK/C3	H 3132	FRB 17/290	TSN 532 L	—	SNV290	22232 K	—	—

## With labyrinth seal

30	071034M	P2B507-ISN-030MFS	SNL507	22207 EK/C3	H 307	FRB 5.5/72	TSN 507 S	—	—	—	—	
35	071035M	P2B508-ISN-035MFS	SNL508	22208 EK/C3	H 308	FRB 8/80	TSN 508 S	SYNT 35 FTS	—	—	—	
40	071036M	P2B509-ISN-040MFS	SNL509	22209 EK/C3	H 309	FRB 3.5/85	TSN 509 S	SYNT 40 FTS	SNV080	22209 K	—	
45	071037M	P2B510-ISN-045MFS	SNL510	22210 EK/C3	H 310	FRB 9/90	TSN 510 S	SYNT 45 FTS	SNV090	22210 K	—	
50	071038M	P2B511-ISN-050MFS	SNL511	22211 EK/C3	H 311	FRB 9.5/100	TSN 511 S	SYNT 50 FTS	SNV100	22211 K	QVSN11V050ST	QVVS11V050ST
55	071039M	P2B512-ISN-055MFS	SNL512	22212 EK/C3	H 312	FRB 10/110	TSN 512 S	SYNT 55 FTS	SNV110	22212 K	QVSN13V055ST	QVVS13V055ST
60	071040M	P2B513-ISN-060MFS	SNL513	22213 EK/C3	H 313	FRB 10/120	TSN 513 S	SYNT 60 FTS	SNV120	22213 K	QVSN13V060ST	QVVS13V060ST
65	071041M	P2B515-ISN-065MFS	SNL515	22215 EK/C3	H 315	FRB 12.5/130	TSN 515 S	SYNT 65 FTS	SNV130	22215 K	QVSN15V065ST	QVVS15V065ST
70	071042M	P2B516-ISN-070MFS	SNL516	22216 EK/C3	H 316	FRB 12.5/140	TSN 516 S	SYNT 70 FTS	SNV140	22216 K	QVSN17V070ST	QVVS17V070ST
75	071043M	P2B517-ISN-075MFS	SNL517	22217 EK/C3	H 317	FRB 12.5/150	TSN 517 S	SYNT 75 FTS	SNV150	22217 K	QVSN17V075ST	QVVS17V075ST
80	071044M	P2B518-ISN-080MFS	SNL518	22218 EK/C3	H 318	FRB 12.5/160	TSN 518 S	SYNT 80 FTS	SNV160	22218 K	QVSN20V080ST	QVVS20V080ST
85	071045M	P2B519-ISN-085MFS	SNL519	22219 EK/C3	H 319	FRB 12.5/170	TSN 519 S	SYNT 85 FTS	SNV170	22219 K	QVSN20V085ST	QVVS20V085ST
90	071046M	P2B520-ISN-090MFS	SNL520	22220 EK/C3	H 320	FBR 12/180	TSN 520 S	SYNT 90 FTS	SNV180	22220 K	QVSN20V090ST	QVVS20V090ST
100	071047M	P2B522-ISN-100 MFS	SNL522	22222 EK/C3	H 322	FRB 13.5/200	TSN 522 S	SYNT 100 FTS	SNV200	22222 K	QVSN22V100ST	QVVS22V100ST
110	071048M	P2B524-ISN-110MFS	SNL524	22224 EK/C3	H 3124	FRB 14/215	TSN 524 S	SYNT 110 FTS	SNV215	22224 K	QVSN22V110ST	QVVS22V110ST
115	071049M	P2B526-ISN-115MFS	SNL526	22226 EK/C3	H 3126	FRB 13/230	TSN 526 S	SYNT 115 FTS	SNV230	22226 K	QVSN26V115ST	QVVS26V115ST
125	071050M	P2B528-ISN-125MFS	SNL528	22228 EK/C3	H 3128	FRB 15/250	TSN 528 S	SYNT 125 FTS	SNV250	22228 K	QVSN28V125ST	QVVS28V125ST
135	071104M	P2B530-ISN-135MFS	SNL530	22230 EK/C3	H 3130	FRB 16.5/270	TSN 530 S	—	SNV270	22230 K	—	—
140	071108M	P2B532-ISN-140MFS	SNL532	22232 EK/C3	H 3132	FRB 17/290	TSN 532 S	—	SNV290	22232 K	—	—

## Expansion (float)

Bore (mm)	Dodge Safety Mount ISN		SKF®				SYNT	Schaeffler® FAG®		Timken® QM®	
	Part number	Description	SNL		Adapter	Seal		Housing	Bearing	Single V-Lock®	Double V-Lock
			Housing	Bearing							
<b>With rubber contact seal</b>											
30	071017M	P2B507-ISN-030MLR	SNL507	22207 EK/C3	H 307	TSN 507 L	—	—	—	—	—
35	071018M	P2B508-ISN-035MLR	SNL508	22208 EK/C3	H 308	TSN 508 L	SYNT 35 L	—	—	—	—
40	071019M	P2B509-ISN-040MLR	SNL509	22209 EK/C3	H 309	TSN 509 L	SYNT 40 L	SNV080	22209 K	—	—
45	071020M	P2B510-ISN-045MLR	SNL510	22210 EK/C3	H 310	TSN 510 L	SYNT 45 L	SNV090	22210 K	—	—
50	071021M	P2B511-ISN-050MLR	SNL511	22211 EK/C3	H 311	TSN 511 L	SYNT 50 L	SNV100	22211 K	QVSN11V050SEM	QVVS11V050SEM
55	071022M	P2B512-ISN-055MLR	SNL512	22212 EK/C3	H 312	TSN 512 L	SYNT 55 L	SNV110	22212 K	QVSN13V055SEM	QVVS13V055SEM
60	071023M	P2B513-ISN-060MLR	SNL513	22213 EK/C3	H 313	TSN 513 L	SYNT 60 L	SNV120	22213 K	QVSN13V060SEM	QVVS13V060SEM
65	071024M	P2B515-ISN-065MLR	SNL515	22215 EK/C3	H 315	TSN 515 L	SYNT 65 L	SNV130	22215 K	QVSN15V065SEM	QVVS15V065SEM
70	071025M	P2B516-ISN-070MLR	SNL516	22216 EK/C3	H 316	TSN 516 L	SYNT 70 L	SNV140	22216 K	QVSN17V070SEM	QVVS17V070SEM
75	071026M	P2B517-ISN-075MLR	SNL517	22217 EK/C3	H 317	TSN 517 L	SYNT 75 L	SNV150	22217 K	QVSN17V075SEM	QVVS17V075SEM
80	071027M	P2B518-ISN-080MLR	SNL518	22218 EK/C3	H 318	TSN 518 L	SYNT 80 L	SNV160	22218 K	QVSN20V080SEM	QVVS20V080SEM
85	071028M	P2B519-ISN-085MLR	SNL519	22219 EK/C3	H 319	TSN 519 L	SYNT 85 L	SNV170	22219 K	QVSN20V085SEM	QVVS20V085SEM
90	071029M	P2B520-ISN-090MLR	SNL520	22220 EK/C3	H 320	TSN 520 L	SYNT 90 L	SNV180	22220 K	QVSN20V090SEM	QVVS20V090SEM
100	071030M	P2B522-ISN-100MLR	SNL522	22222 EK/C3	H 322	TSN 522 L	SYNT 100 L	SNV200	22222 K	QVSN22V100SEM	QVVS22V100SEM
110	071031M	P2B524-ISN-110MLR	SNL524	22224 EK/C3	H 3124	TSN 524 L	SYNT 110 L	SNV215	22224 K	QVSN22V110SEM	QVVS22V110SEM
115	071032M	P2B526-ISN-115MLR	SNL526	22226 EK/C3	H 3126	TSN 526 L	SYNT 115 L	SNV230	22226 K	QVSN26V115SEM	QVVS26V115SEM
125	071033M	P2B528-ISN-125MLR	SNL528	22228 EK/C3	H 3128	TSN 528 L	SYNT 125 L	SNV250	22228 K	QVSN28V125SEM	QVVS28V125SEM
135	071103M	P2B530-ISN-135MLR	SNL530	22230 EK/C3	H 3130	TSN 530 L	—	SNV270	22230 K	—	—
140	071107M	P2B532-ISN-140MLR	SNL532	22232 EK/C3	H 3132	TSN 532 L	—	SNV290	22232 K	—	—

## With labyrinth seal

30	071051M	P2B507-ISN-030MLS	SNL507	22207 EK/C3	H 307	TSN 507 S	—	—	—	—	—
35	071052M	P2B508-ISN-035MLS	SNL508	22208 EK/C3	H 308	TSN 508 S	SYNT 35 LTS	—	—	—	—
40	071053M	P2B509-ISN-040MLS	SNL509	22209 EK/C3	H 309	TSN 509 S	SYNT 40 LTS	SNV080	22209 K	—	—
45	071054M	P2B510-ISN-045MLS	SNL510	22210 EK/C3	H 310	TSN 510 S	SYNT 45 LTS	SNV090	22210 K	—	—
50	071055M	P2B511-ISN-050MLS	SNL511	22211 EK/C3	H 311	TSN 511 S	SYNT 50 LTS	SNV100	22211K	QVSN11V050SET	QVVS11V050SET
55	071056M	P2B512-ISN-055MLS	SNL512	22212 EK/C3	H 312	TSN 512 S	SYNT 55 LTS	SNV110	22212K	QVSN13V055SET	QVVS13V055SET
60	071057M	P2B513-ISN-060MLS	SNL513	22213 EK/C3	H 313	TSN 513 S	SYNT 60 LTS	SNV120	22213K	QVSN13V060SET	QVVS13V060SET
65	071058M	P2B515-ISN-065MLS	SNL515	22215 EK/C3	H 315	TSN 515 S	SYNT 65 LTS	SNV130	22215K	QVSN15V065SET	QVVS15V065SET
70	071059M	P2B516-ISN-070MLS	SNL516	22216 EK/C3	H 316	TSN 516 S	SYNT 70 LTS	SNV140	22216K	QVSN17V070SET	QVVS17V070SET
75	071060M	P2B517-ISN-075MLS	SNL517	22217 EK/C3	H 317	TSN 517 S	SYNT 75 LTS	SNV150	22217K	QVSN17V075SET	QVVS17V075SET
80	071061M	P2B518-ISN-080MLS	SNL518	22218 EK/C3	H 318	TSN 518 S	SYNT 80 LTS	SNV160	22218K	QVSN20V080SET	QVVS20V080SET
85	071062M	P2B519-ISN-085MLS	SNL519	22219 EK/C3	H 319	TSN 519 S	SYNT 85 LTS	SNV170	22219K	QVSN20V085SET	QVVS20V085SET
90	071063M	P2B520-ISN-090MLS	SNL520	22220 EK/C3	H 320	TSN 520 S	SYNT 90 LTS	SNV180	22220K	QVSN20V090SET	QVVS20V090SET
100	071064M	P2B522-ISN-100MLS	SNL522	22222 EK/C3	H 322	TSN 522 S	SYNT 100 LTS	SNV200	22222K	QVSN22V100SET	QVVS22V100SET
110	071065M	P2B524-ISN-110MLS	SNL524	22224 EK/C3	H 3124	TSN 524 S	SYNT 110 LTS	SNV215	22224K	QVSN22V110SET	QVVS22V110SET
115	071066M	P2B526-ISN-115MLS	SNL526	22226 EK/C3	H 3126	TSN 526 S	SYNT 115 LTS	SNV230	22226K	QVSN26V115SET	QVVS26V115SET
125	071067M	P2B528-ISN-125MLS	SNL528	22228 EK/C3	H 3128	TSN 528 S	SYNT 125 LTS	SNV250	22228K	QVSN28V125SET	QVVS28V125SET
135	071105M	P2B530-ISN-135MLS	SNL530	22230 EK/C3	H 3130	TSN 530 S	—	SNV270	22230K	—	—
140	071109M	P2B532-ISN-140MLS	SNL532	22232 EK/C3	H 3132	TSN 532 S	—	SNV290	22232K	—	—

# With the First-Fit Promise, you can switch with confidence

Switching brands shouldn't mean taking on risks. With the First-Fit Promise, you can order with confidence knowing Safety Mount ISN is a guaranteed drop-in interchange with zero modifications for the products listed in this document.

We guarantee you'll get equal or better performance, and if it doesn't live up to that promise, simply return it with no restocking fee—that's the First-Fit Promise.

For additional information, visit [dodgeindustrial.com/first-fit-promise](https://dodgeindustrial.com/first-fit-promise)



## Remote condition monitoring

Pre-drilled and tapped housing allows for easy installation of Dodge sensors to remotely view bearing health with the OPTIFY™ condition monitoring platform—empowering anyone to operate safely, improve reliability, and reduce downtime.



**OPTIFY™**  
Get started at  
[dodgeoptify.com](https://dodgeoptify.com)

## Interchanges with spellbinding simplicity

PT Wizard is our easy-to-use platform that features a built-in product interchange tool, allowing you to enter any other manufacturer's part number or description and find the best Dodge solution for your application.



**PT Wizard**  
Scan to access our digital  
mounted bearing interchange  
tool or visit at [ptwizard.com](https://ptwizard.com)



Dodge Industrial, Inc. reserves all rights in this document and in the subject matter and illustrations contained therein. We reserve the right to modify contents without prior notice and do not accept responsibility for potential errors or possible lack of information in this document. Dodge Industrial, Inc. Terms and Conditions apply. Any reproduction, disclosure to third parties or utilization of its contents—in whole or in parts—is forbidden without prior written consent of Dodge Industrial, Inc.

© Copyright Dodge Industrial, Inc. All rights reserved. Specifications subject to change without notice.  
An RBC Bearings company.

SKF, Timken, V-Lock, QM, Schaeffler, and FAG are trademarks or trade names of their respective owners, their affiliates, or subsidiaries. Dodge Industrial is not affiliated with, sponsored by, or endorsed by Aktiebolaget SKF, The Timken Company, Schaeffler Technologies AG & Co. KG, or any other trademark owner referenced herein. Any use of third-party trademarks is solely for purposes of identifying the products of those companies and does not imply any association with Dodge Industrial. All other names, marks, and trade names used are the property of their respective owners and are used only to identify their products or entities. No claim of ownership, affiliation, or endorsement is intended or implied.