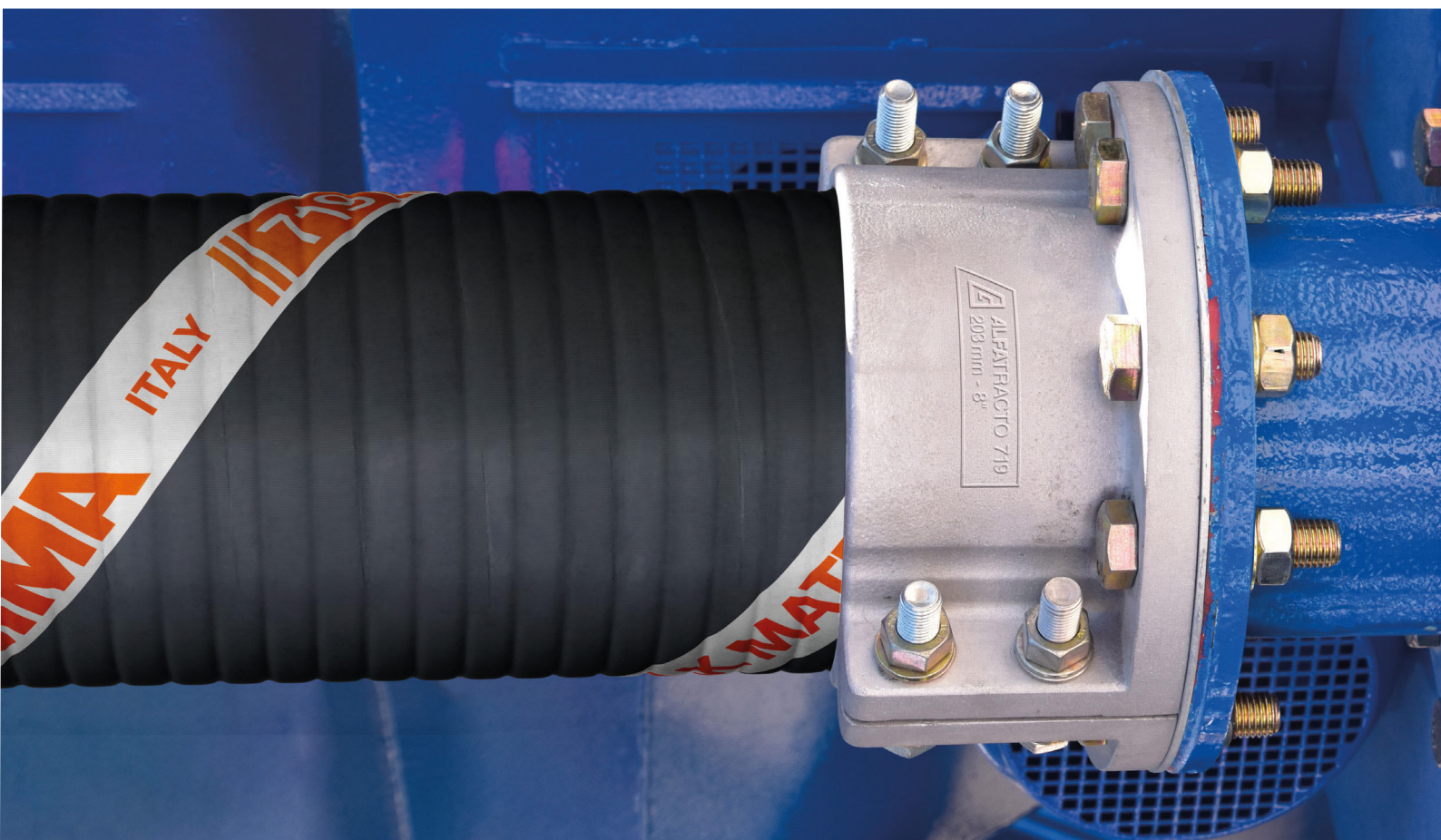


// 719AA



ABRASIVE SLURRY HANDLING SYSTEM

 **ALFAGOMMA** GROUP



ALFATRACTO 719 ABRASIVE SLURRY HANDLING SYSTEM

THE MOST COST EFFECTIVE SOLUTION FOR ABRASIVE SLURRIES HANDLING

- The wear resistant tube increases the hose lifespan
- The reusable couplings reduce replacement costs
- The ability to cut to size and assemble on site reduces:
 - » Inventory costs
 - » Assembly costs
 - » Delivery lead times

APPLICATIONS

MINING INDUSTRY

Transfer of

- CRUSHED AND GROUND ORE
- WASHED COAL
- WASTE PRODUCTS

QUARRYING INDUSTRY

Transfer of

- SAND AND RIVER STONE
- CRUSHED AND GROUND ORE

CEMENT INDUSTRY

Transfer of

- LIME
- STONE
- SLURRY

ANY OTHER INDUSTRY WHERE HEAVY DUTY ABRASION RESISTANT HOSES ARE NEEDED FOR SLURRY TRANSPORT



// HOSE

719AA HEAVY DUTY ABRASIVE SLURRY S&D

- Thick, premium abrasion resistant NR tube to provide extended hose service life
- CR cover to guarantee excellent ozone and weather resistance - also hydrocarbon and seawater resistant
- Corrugated cover to enhance flexibility and ease of installation
- Multiple layers of textile fabrics with embedded steel helix wire reinforcement to provide pressure and vacuum capabilities
- 10 bar working pressure with 3:1 safety factor
- 100% vacuum
- Conductive tube and cover to ensure safe use in potentially explosive environments
- Available from ID 51 to 305 mm

// 719AA



Abrasive slurry S&D 10 bar (150 psi) - Corrugated ALFATRACTO muff couplings

Tube: black conductive NR - abrasion resistance 50 mm³ (ISO 4649/A).

Reinforcement: high tensile textile cords with embedded steel helix wire.

Cover: black conductive CR - abrasion, ozone, sea water and hydrocarbon resistant

Application: bulk material and abrasive slurries suction and delivery in heavy duty applications.

Designed for ALFATRACTO 719 muff coupling use.

Temperature: -30 °C +80 °C (-22 °F +176 °F)

ID (mm)	ID (in)	OD (mm)	OD (in)	WP (bar)	WP (psi)	BP (bar)	BP (psi)	BR (mm)	BR (in)	Vacuum %	Weight (kg/m)	Weight (lb/ft)
51,0	2"	75,0	2,95	10	150	30	450	255	10,04	100,00	3,260	2,20
63,0	2 1/2"	88,0	3,46	10	150	30	450	315	12,40	100,00	4,170	2,81
76,0	3"	114,0	4,49	10	150	30	450	380	14,96	100,00	7,610	5,12
102,0	4"	133,0	5,24	10	150	30	450	510	20,08	100,00	8,380	5,64
127,0	5"	165,0	6,50	10	150	30	450	635	25,00	100,00	12,700	8,54
152,0	6"	188,0	7,40	10	150	30	450	760	29,92	100,00	14,850	9,98
203,0	8"	243,0	9,57	10	150	30	450	1218	47,95	100,00	20,560	13,82
254,0	10"	294,0	11,57	10	150	30	450	1524	60,00	100,00	25,700	17,28
305,0	12"	354,0	13,94	10	150	30	450	2440	96,06	100,00	32,830	22,07

ALFAGOMMA ITALY // 719 // 10 bar (150 psi) BULK MATERIAL HANDLING S&D Ω

// FITTINGS

ALFATRACTO 719 MUFF COUPLING - UNIVERSAL FLANGE

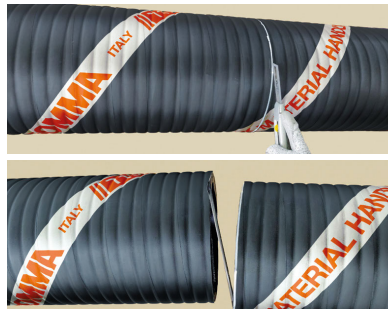
- Aluminium light weight flanged connection system
- Split half couplings externally bolt mounted
- Universal flanges with elliptical drilling pattern compatible with:
 - EN 1092-1 PN10
 - ANSI ASME B16.5 ASA150
 - AS 2129 TABLE D-E
- Couplings internal corrugations are designed to match with the 719AA hose cover corrugations - providing maximum coupling retention
- Couplings are re-usable as they are designed not to come in contact with the abrasive medium
- On site quick and easy assembly



// ASSEMBLY PROCEDURE



Measure and mark the hose to the required length



Cut the hose with a sharp cutting tool up to the steel helix wire

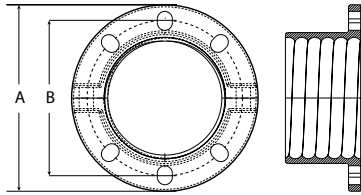


Cut the steel helix wire. The wire must not protrude past the end of the hose

// I5MFU61AAC

FIXED SPLIT FLANGE - PN 10 / ASA150 / TABLE D-E

ALFATRAC TO 719 - Muff coupling - Designed for use with 719AA corrugated cover hose - Aluminium



Flanges: elliptical drilling pattern compatible with

- EN 1092-1 PN10
- ANSI ASME B16.5 ASA150
- AS 2129 TABLE D-E

Refer to below table.

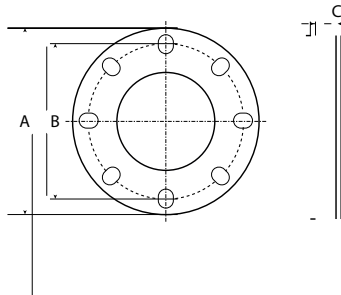
Coupling complete with bolts, nuts and washers.

Item Code	Product Code	Hose ID (in)	Hose ID (mm)	Thread type	Head DN (in)	Head DN (mm)	Flange compatibility	A (mm)	B (mm)	N° Hole
2307875	I5MFU61A-AC0051	2" 2	51,0	UNIV	2"	51,0	PN10/ASA150/TAB.D-E	165	120	6
2307876	I5MFU61A-AC0063	1/2"	63,0	UNIV	2 1/2"	63,0	PN10/ASA150	185	140	6
2307877	I5MFU61A-AC0076	3"	76,0	UNIV	3"	76,0	PN10/ASA150/TAB.D-E	200	154	6
2307878	I5MFU61A-AC0102	4"	102,0	UNIV	4"	102,0	PN10/ASA150/TAB.D-E	230	182	6
2307879	I5MFU61A-AC0127	5"	127,0	UNIV	5"	127,0	PN10/ASA150/TAB.D-E	255	213	6
2307880	I5MFU61A-AC0152	6"	152,0	UNIV	6"	152,0	PN10/ASA150/TAB.D-E	285	236	6
2307881	I5MFU61A-AC0203	8"	203,0	UNIV	8"	203,0	PN10/ASA150/TAB.D-E	345	292	8
2307882	I5MFU61A-AC0254	10"	254,0	UNIV	10"	254,0	PN10/ASA150/TAB.E	405	353	12
2307883	I5MFU61A-AC0305	12"	305,0	UNIV	12"	305,0	PN10/ASA150/TAB.D-E	495	418	12

// ISJ0FU

Elliptical drilling pattern compatible with PN 10 / ASA150 / Table D-E - Black SBR

FLANGE SEAL FOR ALFATRAC TO 719 - MUFF COUPLING



Item Code	Product Code	DN (in)	DN (mm)	A (mm)	B (mm)	C (mm)
2308060	ISJ0FU-051	2"	51,0	165	120	8
2308061	ISJ0FU-063	2 1/2"	63,0	185	140	8
2308062	ISJ0FU-076	3"	76,0	200	154	8
2308063	ISJ0FU-102	4"	102,0	230	182	8
2308064	ISJ0FU-127	5"	127,0	255	213	8
2308065	ISJ0FU-152	6"	152,0	285	236	8
2308066	ISJ0FU-203	8"	203,0	345	292	8
2308067	ISJ0FU-254	10"	254,0	405	353	8
2308068	ISJ0FU-305	12"	305,0	495	418	8



Place the two half shells onto the hose and tighten the side flange bolts. The corrugation inside the muff coupling must align exactly with the corrugation of the hose cover



Cut off excess hose protruding past the coupling face



The hose assembly is now ready

THE ALFAGOMMA GROUP



UNITED KINGDOM – Sleaford
Kiowa Ltd, The Reservation, East Road
Sleaford, Lincolnshire, NG34 7BY
+44 (0) 1529 416200
sales@kiowa.co.uk

UNITED KINGDOM – Teesside
Kiowa Ltd, The Reservation, East Road
Sleaford, Lincolnshire, NG34 7BY
+44 (0) 1642 762266
teessidesales@kiowa.co.uk

UNITED KINGDOM – Newcastle
Kiowa Ltd, The Reservation, East Road
Sleaford, Lincolnshire, NG34 7BY
+44 (0) 1912 709730
newcastlesales@kiowa.co.uk

UNITED KINGDOM – Glasgow
Kiowa Ltd, The Reservation, East Road
Sleaford, Lincolnshire, NG34 7BY
+44 (0) 1417 746200
glasgowsales@kiowa.co.uk

UNITED KINGDOM – Aberdeen
Kiowa Ltd, The Reservation, East Road
Sleaford, Lincolnshire, NG34 7BY
+44 (0) 1224 890339
aberdeensales@kiowa.co.uk



ARGENTINA – Buenos Aires
Moreno Store Center
Belisario Roldán 2616 - CP. 1744
La Reja - Bs. As.
+54 (11)
5365-6062/6063

AUSTRALIA – Sydney
50 Honeycomb Drive
Eastern Creek
Sydney, NSW 2766
+61 (2) 98 53 09 00
sydney@alfagomma.com.au

BELGIUM & NETHERLANDS – Benelux
Z5 Mollem 340
1730 Asse – Mollem
+32 (2) 209 27 40
info.benelux@alfagomma.com

BRAZIL – Guaranésia
Rua Felice Gennasio 401
Distrito Indl. Dr. Firmino Rocha de Freitas
37810-000 - Guaranésia, MG - Brasil
+55 (35) 35 55 0408
contato@alfagomma.com.br

CANADA – Montreal
6550 Abrams
St. Laurent, Montreal
Quebec H4S 1Y2
+1 (514) 33 35 577
info@alfagomma.ca

CHINA – Ningbo
No. 1 Cidong South Avenue
Coastal Economic Development Zone
Cixi, Zhejiang, China 315311 +86 (574)
88 15 72 88
alfagomma.china@alfagomma.com.cn

FRANCE – Villepinte
Le Sisley – Parc d'activité Paris Nord 2
23 Allée des Impressionnistes
93420 Villepinte
+33 (1) 48172121
agfrance.info@alfagomma.com

GERMANY – Herne
Friedrich der Grosse 10
44628 Herne
+49 (2323) 14 730
info.germany@alfagomma.com

GREECE – Athens
85 Kifissou Avenue
12241 Algaleo, Athens
+30 (210) 41 19 909
info.hellas@alfagomma.com

INDONESIA – Tangerang
Jalan Raya Serang km. 16
Sukamulya Cikupa
Tangerang Banten 15710
+62 (21) 59 66 4792
jakarta@alfagomma.co.id

ITALY – Vimercate
Via Torri Bianche 1
20871 Vimercate (MB)
+39 (039) 60 161
info@alfagomma.com

MALAYSIA – Pasir Gudang
Plo 405, Jalan Perak 4
81707 Pasir Gudang
Negeri Johor Darul Takzim
+60 (7) 25 72 000
alfagomma@alfagomma.com.my

MEXICO – Torreón
Av. Industria de la transformacion
Parque Pymes 585
27400 Torreón, Coahuila
+52 8713125026
alfagomma.mexico@alfagomma.com

SINGAPORE
14 Tuas Ave 11
Singapore 639080
+65 6360 9000
alfagomma@alfagomma.com.sg

SOUTH AFRICA – Johannesburg
17 Quark Crescent Linbro Business Park
Sandton 2065 +27 (11) 20 10
900
alfagomma@alfagomma.co.za

SOUTH KOREA – Hwasung
15 Julteo Gil
Yangkam-Myun, Hwasung-Si
Kyungki-Do 18630
+82 (31) 35 28 671
alfagomma@alfagomma.co.kr

THAILAND – Bangkok
60/21 Moo.4 King Kaew Road
Racha Thewa SubDistrict, Bang Phli District
Samut Prakan Province, 10540
+66 (0) 2 136 2388
sales@alfagomma.co.th

UNITED KINGDOM – Haydock
43 Wilcock Road
Old Boston Trading Estate Haydock
St. Helens WA11 9TG +44
(1942) 40 76 80
haydock.sales@alfagomma.com

UNITED STATES OF AMERICA – Burlington
3520 West Avenue
IA 52601 Burlington
+1 (319) 75 89 224
info@alfagomma.us



DENMARK – Kolding
Kokbjerg 1A
6000 Kolding
+45 43 25 40 00
kundeservice@dunlophifl
ex.dk

ESTONIA – Tallin
Läike tee 32/1 - Peetri alevik,
Rae vald - 75312 Harjumaa (Tallinn)
+372 (0) 605 4900
tallinn@dunlophifl
ex.ee

FINLAND – Pirkkala
Jasperintie 320
33960 Pirkkala
+358 (207) 625 700
info@dunlophifl
ex.fi

NORWAY – Kristiansand
Buråsen 7
4636 Kristiansand
+47 23 00 47 00
sales@dunlophifl
ex.no

SWEDEN – Halmstad
Kistinge Industriområde
Seldonsvägen 2
302 62 Halmstad
+46 (0)10-414 44 00
info@dunlophifl ex.se



GERMANY – Ettlingen
Pforzheimer Str. 126
76275 Ettlingen
+49 (7243) 50 550
info@argus-fl
uidtechnik.de

UNITED KINGDOM – Salisbury
Telford Road
Salisbury, Wiltshire SP2 7PH
+44 (1722) 42 05 90
sales@hifl
ex-europe.com