

# ARDEN

EQUIPMENT

# EARTHMOVING



BUCKET • TOOTH • CLAMSHELL • GRAB • HYDRAULIC BREAKER • LEVELLER • ASPHALT CUTTER



200+  
employees



5 foreign  
subsidiaries



Membership of  
a group



50 years  
of experience



Exporting to  
50 countries



7 business  
sectors

## Building together the innovations of tomorrow.



**Laurent DARDENNE**  
Managing Director  
ARDEN EQUIPMENT

Dear customers and partners,

At Arden Equipment, we develop our solutions with a clear guiding principle: to design reliable, high-performance equipment tailored to the practical demands of the field, whilst preparing our product ranges for the future. Our approach is based on experience, listening to our users, and a constant commitment to improving our products and services.

Among our major developments, we are preparing a new generation of mini-excavator buckets for 2026. Their design will allow them to accommodate the main quick-coupler kits without any modifications to the bucket body, with the aim of improving our lead times and responding more quickly to your requests. In line with this approach, we are continuing to develop S-type couplers to ensure broad compatibility with existing fleets of machinery. Our dual-purpose interchangeable solution, based on the AIO automatic connection system, also illustrates this move towards greater versatility, allowing you to switch quickly from a demolition or recycling tool to handling equipment using a single machine.

We are also working to optimise our production costs, without compromising on our core requirement: to maintain the high standards of quality and durability that characterise Arden Equipment. This approach applies in particular to our ranges of sorting and demolition grapples. By developing and streamlining our product ranges, we are able to offer more competitive solutions, whilst retaining tried-and-tested mechanical components that guarantee reliability in the field.

The launch of our new website marks another significant milestone. More than just a showcase, it serves as a genuine decision-making tool: featuring equipment and spare parts configurators, simplified access to technical and sales documentation, as well as an online purchasing platform exclusively for our distributor network, enabling them to order spare parts and certain equipment directly.

As Managing Director, and drawing on my previous experience as Industrial Director, I remain firmly committed to developing sustainable solutions, supporting you in your projects and building together the innovations of tomorrow.

**Laurent DARDENNE**  
Managing Director

Get to know our  
company :



# GENERAL-PURPOSE BUCKET



1.1t - 27t



General-purpose buckets are designed for earthmoving work in **soft to medium-hard materials**, such as clay or soil. Equipped as standard with Arden Equipment teeth, they offer good penetration capacity and efficient filling to optimize on-site performance.



- Compatible with AE quick hitches or direct mounting
- Optimized penetration and filling
- Stability and respect of the original kinematics
- Several profiles available according to needs

## OPTIONS

- Non-reversible in QA mode
- Reversible in CW mode
- Bolt-on cutting edge
- Welded V-cutting edge

# SEVERE-DUTY BUCKET



1.1t - 70t



Severe-duty buckets are designed for earthmoving in **compact and abrasive materials**. Thanks to their reinforcements, they guarantee robustness and durability under the most demanding conditions.



- Same advantages as the general-purpose bucket
- 450 HB anti-abrasion steel and reinforced structure (belts and wear pads) depending on the model
- Two profiles available: standard (earthmoving / loading) and T (block handling)

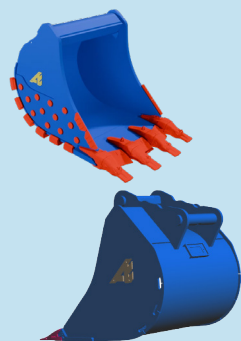
## OPTIONS

- Non-reversible in QA mode
- Reversible in CW mode
- Welded V-cutting edge
- Bolt-on cutting edge

# QUARRY BUCKET



12t - 90t



Quarry buckets are designed for the extraction and loading of **highly abrasive materials**. Their double skin and shielding options ensure maximum resistance in the most demanding conditions.



- Same advantages as the severe-duty bucket
- Double skin for increased abrasion resistance

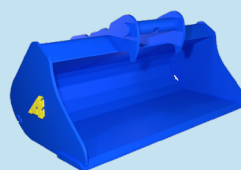
## OPTIONS

- Non-reversible in QA mode
- Reversible in CW mode
- Armor: heel shrouds, wear buttons, lip shrouds, side protection
- Delta cutting edge

# CLEANING BUCKET



0.8t - 53t



Cleaning buckets are designed for cleaning ditches and rivers, surface stripping, and material loading. Their width allows picking up larger quantities from the ground. Available with **different profiles: flat or round bottom**.



- Versatile and efficient
- Time-saving and optimized productivity
- Robust construction

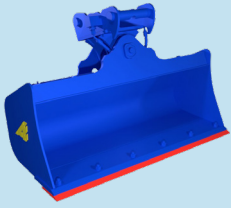
## OPTIONS

- HD reinforcement (belts / double skin / side cutters)
- Rear blade
- Bare blade, bolt-on cutting edge or V-cutting edge (from 37 t)

# TILTING CLEANING BUCKET



0.8t - 37t



Tilting cleaning buckets are equipped with one or two horizontal cylinders depending on their size, offering a **45° tilt** to the left and right. Ideal for grading highways or any sloping surface, they ensure **precision and efficiency**.

+

- 1 or 2 horizontal cylinders depending on the model
- 2 × 45° tilt

## OPTIONS

- Counterbalance valve (from model C231)
- Front cylinder protection
- Welded rear blade
- HD reinforcement (double skin / side cutters)
- Welded or bolt-on V-cutting edge

# BANANA BUCKET



0.8t - 20t



Banana buckets are designed for creating trenches and working in hard-to-reach areas, such as under pipes or cables. Their **narrow width** and **cut-outs** ensure **precision and maneuverability**.

+

- Versatile and precise
- Robust construction

## OPTIONS

- Bare blade or teeth
- Welded V-cutting edge
- HD reinforcement

# SKELETON BUCKET



0.8t - 37t



Skeleton buckets are designed for sorting, screening, and sifting materials. Available in **three profiles** (paving removal, 2/3, and full), they are equipped as standard with Arden Equipment teeth and spacings of 60, 100, or 300 mm depending on the

+

- Robust and durable
- Adaptable to site requirements

## OPTIONS

- Adjustable spacing

# RAKE BUCKET



0.8t - 27t



Rake buckets are designed for ripping, bulking, and scarifying. Their **spaced tines** facilitate ground penetration, offering efficiency and precision on the job site.

+

- Versatile and adaptable to all machines
- Time-saving and productivity
- Resistant and durable construction

## OPTIONS

- Adjustable tine spacing

# MULTIPURPOSE BUCKET



2.6t - 16t



Arden Equipment **multipurpose buckets** (MF) are designed for front loading and unloading, scraping the ground with the **bucket open** for cleaning, as well as backfilling trenches. Adaptable to all machines, they are made of anti-abrasion steel for optimal robustness.



- Several widths available depending on needs
- Robust construction in anti-abrasion steel
- Reversible bolt-on cutting edge
- RB-OCE on the inner shell for increased durability

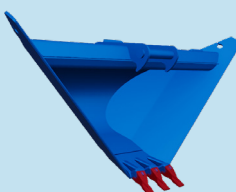
## OPTIONS

- Bare blade
- Teeth or cutting edge

# TRAPEZOIDAL BUCKET



0.8t - 37t



Trapezoidal buckets are designed for creating and maintaining ditches. Ideal for use under AT or ATR, they are supplied as standard with Arden Equipment teeth.



- Robust and versatile design
- Two possible side angles: 45° or 63°

## OPTIONS

- Bare blade, bolt-on or welded cutting edge

# ROCK BREAKING BUCKET



20t - 53t



Rock breaking buckets are designed for handling rock blocks, quarry extraction, or demolishing slabs. Their narrow width promotes **optimal ground penetration**.



- Adaptable and versatile
- Robust construction
- Maximum penetration

## OPTIONS

- Central rib
- Delta cutting edge

# RIPPER TOOTH



0.8t - 90t



Arden Equipment ripper teeth are known for their reliability. They are designed for slab demolition, grooving in very hard soils, **ripping**, and **handling rock blocks**.



- Long lifespan
- Robust construction
- Versatile





SY155U

# GENERAL-PURPOSE BUCKET



7t - 33t



Arden Equipment general-purpose buckets (GP) are designed for all types of **general work**. The choice of bucket will mainly depend on the type of material to be handled, its density, and the loader used.



- Suitable for materials with a density greater than 1 t/m<sup>3</sup>
- Compatible with original or quick hitch (AEL)
- Different configurations depending on the application
- Fast and optimal filling

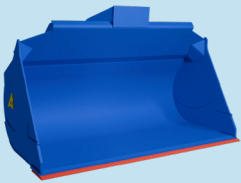
## OPTIONS

- Deflectors, spill guards or grids
- Complete shell in 450 HB steel
- Straight, scalloped or convex sides
- Teeth and/or delta cutting edge

# HEAVY-DUTY & QUARRY BUCKET



7t - 55t



Arden Equipment Heavy Duty (HD) loader buckets are designed for the **most extreme conditions**. Their highly robust design makes them ideal for standard applications for the HD models, and for abrasive applications for the rock buckets (RC), such as quarry loading.



- Ideal for quarry loading for the RC
- Fast and optimal filling
- Manufactured in all sizes for all carriers
- Compatible with original or quick hitch

## OPTIONS

- Deflectors, spill guards or grids
- Complete shell in 450 HB steel
- Straight, scalloped or convex sides
- Teeth and/or delta cutting edge

# HIGH-TIP BUCKET



4.5 - 23t



**High-tip buckets** (DI) are ideal for unloading and handling low-density materials such as cereals, compost, or fertilizer.



- Excellent penetration
- Robust construction
- Several profiles available

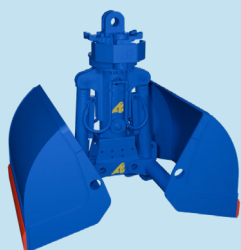
## OPTIONS

- Autonomous greasing
- Hose protections
- 450 HB shell shielding
- Flap on some models

# EARTHMOVING CLAMSHELL BUCKET



10t - 53t



Arden Equipment earthmoving clamshell buckets, with 360° rotation, facilitate loading and unloading on all types of job sites. The **special earthmoving shells** are designed to offer optimal penetration, maximum strength, and high wear resistance. Available in different sizes, narrow or wide, they meet all your needs.



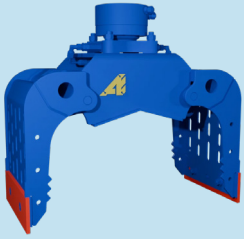
- Universal joint with motor/slewing ring rotation
- Cast steel or HSS structure\*
- 2 vertical cylinders with rod protectors
- HF treated pin
- Anti-abrasion shells

## OPTIONS

- Extension for more depth on some models
- Ejector, bottom wear strips
- Sealing depending on the model
- Centralized autonomous greasing
- Arden Jet, lifting rings

\*high-tensile steel

# MINI-BLUE SORTING GRAB



Arden Equipment Mini-Blue grabs are ideal for **handling branches, curbs, logs, sand, rocks**, and other materials. Compatible with mini-excavators from 0.8 to 6 t, they are available in four models adapted to different carriers.



- Self-lubricating bushings and greasing limited to rotation on some models
- Resistant shells, V-shaped frame
- Optimized weight, notched system
- Reversible cutting edge in 500 HB steel

## OPTIONS

- Closing kit
- Safety check valve
- Teeth on blades
- Switch kit
- Curb handling kit

# HYDRAULIC BREAKER



Arden Equipment's range of breakers is designed to meet all your needs, from small precision tasks to large demolition sites. Thanks to their robust design and resistance to the most difficult conditions, these tools ensure long-term performance and reliability.



- Powerful
- Adaptable
- Centralized autonomous greasing as standard from AB2054
- Dust protection
- Easy start

## OPTIONS

- Arden Jet from AB1054
- Hammer bracket
- Additional grease cartridge
- Additional point
- Autonomous greasing from AB0854 to AB1854

# COMPACTOR PLATE



Arden Equipment compactor plates ensure compaction in hard-to-reach areas, such as trenches or mounds. The pressure exerted from the excavator increases the compaction power.



- **Robust**
- **Compact**

## OPTIONS

- Without rotation
- Mechanical or hydraulic rotation, free-swinging or controlled



# LEVELLING ROLLER



Arden Equipment levelling rollers ensure the alignment and compaction of materials during finishing work.

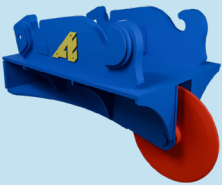


- Robust
- Uniform ground pressure

## OPTIONS

- Different widths available

# ASPHALT CUTTER

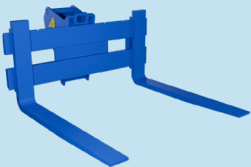
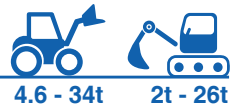


Arden Equipment asphalt cutters, mounted on a Tilt Rotator, allow precise cuts thanks to their 450 mm diameter tempered steel disc.



- Wear-resistant
- Increased penetration
- Precise cutting

# PALLET FORK



Arden Equipment pallet forks, compliant with FEM standards, can be mounted via quick hitch or direct mount on excavators and loaders. Suitable for carriers from 2 to 26 tons, they are also compatible with loaders from 4.6 to 34 tons.



- Adaptable to all machines
- Versatile
- Adjustable spacing

## OPTIONS

- Handling hooks for blade



# HYDRAULIC QA HITCH



0.8t - 37t



The Quick Arden quick hitch system allows for quick change of various AE tools. It is equipped with a safety paddle on the front axle, serving as a visual indicator for locking and unlocking.



- Automatic unlocking and snapping from the cab
- Safety with play compensation
- Compatible with all shovel or backhoe applications (except certain models)
- Cast steel base and mechanism for greater robustness

## OPTIONS

- Latching hooks
- Hydraulic circuit kit

# MECHANICAL QA HITCH



0.8t - 12t



The Quick Arden quick hitch system allows for quick change of various AE tools. For QA05 and QA13-23M series 3 versions, locking is automatic from the cab, while unlocking is done using a key.



- Automatic snapping from the cab
- Safety with play compensation
- Compatible with all shovel or backhoe applications
- Cast steel base and mechanism for greater robustness

## OPTIONS

- Latching hooks

# UA HITCH



2.6t - 53t



The Uni Arden hitch is capable of picking up buckets from different manufacturers, with different pin centers and diameters. It is one of the most compact ranges on the market.



- Automatic front pin holding paddle
- Safety check valve
- Resistant cast body
- Compatible for shovel or backhoe configuration

## OPTIONS

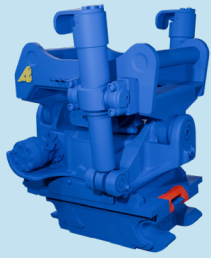
- Handling hook
- Removable original machine pin kit
- AE kit integrated into the bucket beam
- Removable pin kit for couplers
- Hydraulic circuit kit



# ARDEN TILT ROTOR HITCH



2t - 30t



The Arden Tilt Rotor is a hydraulic hitch mounted between the excavator and the tool, offering rotation, tilting, and quick change.

Ideal for earthmoving and roadworks.



- 360° rotation and 80° tilt (2x40°)
- Safety check valves on telescopic cylinders (except ATR 004/006)
- Additional hydraulic line
- Centralized greasing

## OPTIONS

- Transport support
- «Gripper» pipe grabs (some models)
- 3D GPS system
- 2LP or OSCP control system to combine two specific functions or all ATR functions

# ARDEN TILT HITCH



0.8t - 32t



The Arden Tilt offers, in addition to quick change, an equipment tilting system, allowing access to narrow areas while limiting excavator movements.

Ideal for earthmoving and brush clearing work.



- Secure oil transfer
- Versatility and flexibility thanks to a 180° (90x2) or 120° tilt, depending on the model
- Reduction in the number of equipment needed on the job site

## OPTIONS

- Hydraulic kit

# AIO HITCH



12t - 40t

NEW



The **automatic connection quick hitch** is a system allowing instant connection of all your hydraulic and mechanical tools from the cab, and quick switching from one tool to another.



- Versatility
- Productivity gain
- Enhanced operator safety
- Environmental friendliness

## OPTIONS

- Hydraulic kit
- Hose and installation kit
- Additional 1/2" or electrical coupler



# AES HITCH



2t - 75t

NEW



The AES hitch allows you to change tools easily and quickly. It is reversible and compatible with the Nordic S-type standard.

+

- Counterbalance valve on the cylinder for maximum safety
- Automatic front pin holding paddle
- Robust welded or cast body
- Fully protected internal mechanism

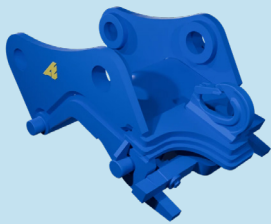
## OPTIONS

- Hydraulic kit

# AECW HITCH



0.8t - 65t



The AECW hitch mounts on buckets with specific CW footprint. It is available in mechanical or hydraulic versions.

+

- Handling hook
- Mechanical or hydraulic version depending on the model
- Robust welded body

## OPTIONS

- Pressure reduction kit for excavators with locking pressure above 60 bar
- Hydraulic kit

# AEL LOADER HITCH



6t - 34t



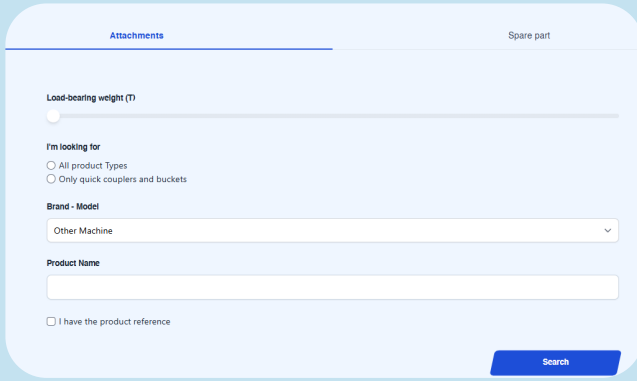
The AEL quick hitch is designed for loaders from 6 to 34 tons. Hydraulic and compatible with the most common standard on the market, it allows a fast and secure tool change with a visual locking indicator.

+

- Hydraulic quick hitch
- Compatible with the ISO standard
- Visual locking indicator



# DISCOVER OUR NEW E-COMMERCE WEBSITE: BUILT-IN CONFIGURATOR, ORDERS AND REAL-TIME QUOTES!



Find the right attachments for your excavator using our configurator:

Select the **weight**, **brand** and **model** of your machine, then filter by tool type.

Compatible equipment is displayed instantly, ready to be ordered or added to your quote.

## Spare parts: quick and easy to order online

Find and order your parts in just a few clicks on our website:

- **Using the configurator:** enter the **serial number** or model name of your equipment.
- **By category:** go straight to the part via the 'Spare Parts' tab.
- **From the product page:** go to the 'Spare Parts' tab.

## Access all our documentation

- Product pages
- User guides
- Spare parts diagrams

Create your customer account now!

[www.arden-equipment.com](http://www.arden-equipment.com)



## REPAIR + SERVICE

The Repair + service gives your tools a **second life**.

Our experts can advise you on how to repair tools that are still in working order, offering a cost-effective solution.

### AFTERMARKET

+44 7946 378556

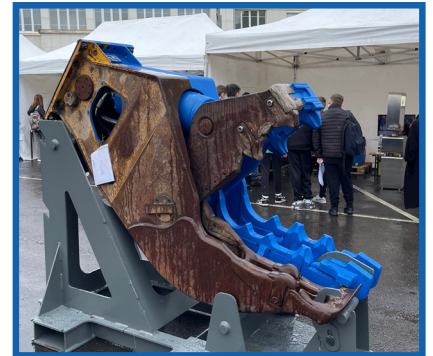
[lewis.tabb@arden-equipment.com](mailto:lewis.tabb@arden-equipment.com)

### SPARE PARTS

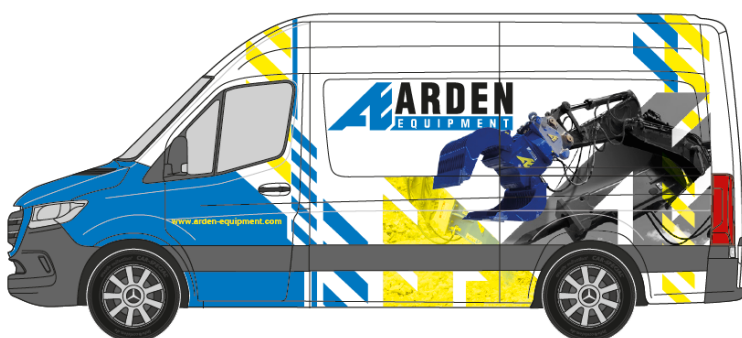
+44 7946 378556

[lewis.tabb@arden-equipment.com](mailto:lewis.tabb@arden-equipment.com)

## BEFORE / AFTER



## MOBILE SERVICE ENGINEERS



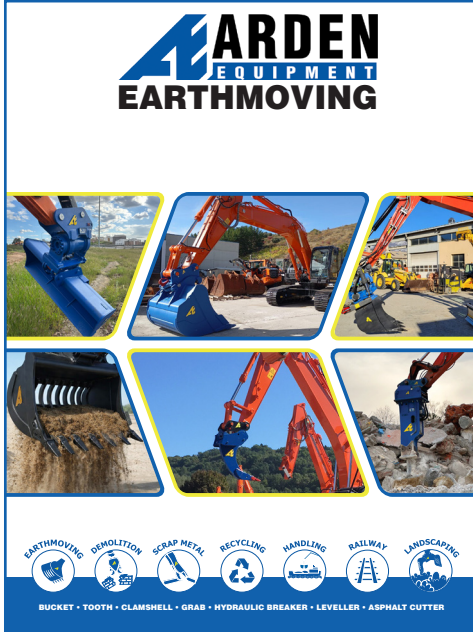
Arden Equipment provides you with a team of qualified technicians, from commissioning to repairing your tools.

Got a question, need some advice, or experiencing a fault? We're here to help.


# OUR INDUSTRY BROCHURES

SEE ALL OUR INDUSTRY BROCHURES

## EARTHMOVING



**ARDEN**  
EQUIPMENT  
EARTHMOVING



**EARTHMOVING** **DEMOLITION** **SCRAP METAL** **RECYCLING** **HANDLING** **RAILWAY** **LANDSCAPING**

BUCKET • TOOTH • CLAMSHELL • GRAB • HYDRAULIC BREAKER • LEVELLER • ASPHALT CUTTER

## DEMOLITION



**ARDEN**  
EQUIPMENT  
DEMOLITION



**EARTHMOVING** **DEMOLITION** **SCRAP METAL** **RECYCLING** **HANDLING** **RAILWAY** **LANDSCAPING**

SHEAR • CONCRETE CRUSHER • STEEL SHEAR • SORTING GRAB • GRAPPLE • HYDRAULIC BREAKER

## SCRAP RECYCLING



**ARDEN**  
EQUIPMENT  
SCRAP RECYCLING



**EARTHMOVING** **DEMOLITION** **SCRAP METAL** **RECYCLING** **HANDLING** **RAILWAY** **LANDSCAPING**

SHEAR • CONCRETE CRUSHER • GRAB • GRAPPLE • MAGNET • STEEL SHEAR • EXCAVATOR ARM

## RAILWAY



**ARDEN**  
EQUIPMENT  
RAILWAY



**EARTHMOVING** **DEMOLITION** **SCRAP METAL** **RECYCLING** **HANDLING** **RAILWAY** **LANDSCAPING**

CLAMSHELL • GRAB • BALLAST TRACK REMOVER • HITCH • BUCKET

## HANDLING



**ARDEN**  
EQUIPMENT  
HANDLING



**EARTHMOVING** **DEMOLITION** **SCRAP METAL** **RECYCLING** **HANDLING** **RAILWAY** **LANDSCAPING**

CLAMSHELL • GRAPPLE • GRAB • BUCKET • SPIDER • U-JOINT • KIT • HITCH

## LANDSCAPING



**ARDEN**  
EQUIPMENT  
LANDSCAPING



**EARTHMOVING** **DEMOLITION** **SCRAP METAL** **RECYCLING** **HANDLING** **RAILWAY** **LANDSCAPING**

BUCKET • GRAB • BACKHOE CLAMSHELL KIT • HITCH

Find out here





# ARDEN

EQUIPMENT

## OUR TEAM



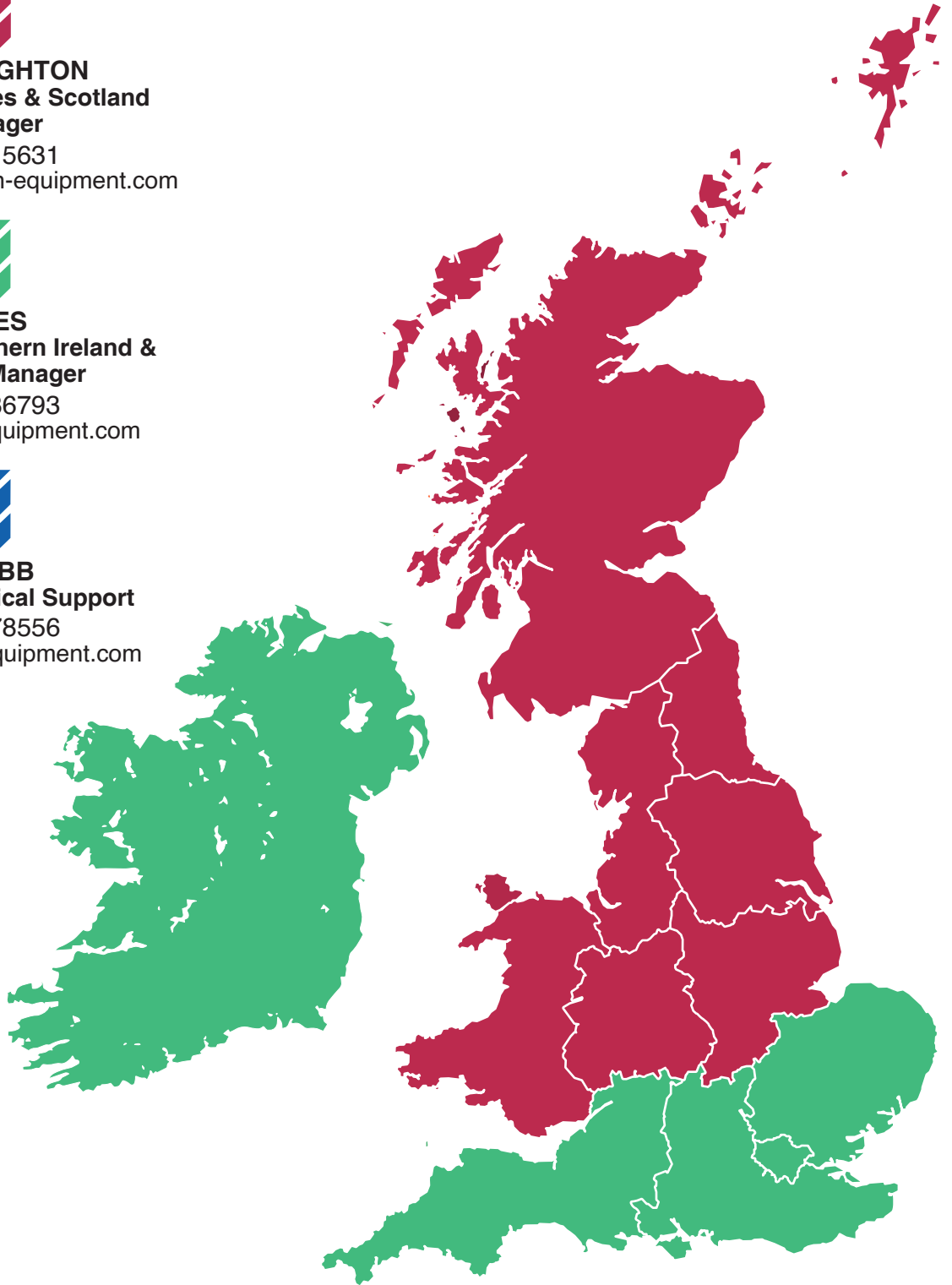
**Richard CREIGHTON**  
North England, Wales & Scotland  
Sales Manager  
+44 7908 715631  
richard.creighton@arden-equipment.com



**Pat JAMES**  
South England, Northern Ireland &  
Ireland Sales Manager  
+44 7957 236793  
pat.james@arden-equipment.com



**Lewis TABB**  
UK / Ireland Technical Support  
+44 7946 378556  
lewis.tabb@arden-equipment.com



Printed by Fusion Graphic 4 Rue François Urano, 08000 Warcq - Do not throw on the public highway - Non-contractual information and subject to modification without notice

