



Ninehundred
Communications
Group

SITE SOLUTIONS



TWO WAY
RADIOS



RAIL
SOLUTIONS



SECURITY
& ELECTRICAL



ECO FRIENDLY
SOLUTIONS



IT
SOLUTIONS



SITE
SOLUTIONS



TELEMATICS
SOLUTIONS



VOICE
& DATA

0845 600 4 900 | www.ninehundred.co.uk

SITE SOLUTIONS

Tailored technology for demanding environments

Our Site Solutions Division provides tailored communication, security, and welfare solutions, ensuring seamless connectivity and protection for even the most demanding environments. Dedicated to providing customised communication, security, and welfare solutions designed for the most challenging environments.

We understand that every site has unique needs, which is why we offer tailored systems to ensure seamless connectivity and robust protection. From advanced communication tools to comprehensive security measures and essential welfare facilities, we deliver reliable, cost-effective solutions that keep your site running efficiently. Whether you need satellite broadband, CCTV, lighting, or two-way radios, we're here to connect and safeguard your site with unmatched expertise.

We prioritise the protection of your site and staff, offering everything from theft prevention to staff safety and well-being. From the initial consultation to ongoing support, we work closely with you to tailor our offerings to meet your specific requirements.

With a focus on quality, reliability, and customer satisfaction, we are dedicated to helping you create the ideal environment for your team to thrive. Our in-house technical team and engineering facilities are available to answer any questions you may have, to support you on site, and to solve any problem you are facing.

OUR DEDICATED FACILITY



KEY FEATURES:



SITE SECURITY



RAPID RESPONSE FIRST AID



OFF GRID DETECTION



SITE WELFARE



INSPECTION CAMERAS



SITE LIGHTING



TWO WAY RADIOS



REMOTE MONITORING



TWO WAY RADIO SOLUTIONS

We operate one of the UK's largest and best maintained fleet of hire radios

Since 1979, Ninehundred Communications has been supplying, supporting, and maintaining professional two-way radio systems for demanding environments, including construction and quarrying sites across the UK, helping teams stay connected, safe, and operational when reliable communication matters most.

We pride ourselves on our strong relationships with leading manufacturers including **Motorola**, **Hytera**, **Icom**, and **Kenwood**, providing access to the latest digital radio technologies designed for high-noise, high-risk, and large-scale worksites.

Our experience allows us to deliver reliable communication systems that improve site safety, productivity, and operational control, even in the harshest conditions.

PORTABLE & IN-VEHICLE RADIO SOLUTIONS

Utilising the latest two-way radio technology, our solutions support portable handheld radios and vehicle-mounted (mobile) radios, forming the backbone of site-wide communication.

- **Portable radios** keep ground teams, supervisors, and security connected
- **In-vehicle radios** provide higher power, extended range, and clearer audio for plant operators, HGVs, delivery vehicles, and site management

We provide a wide variety of radio accessories and spares, suitable for most construction budgets and applications. This includes original manufacturer equipment as well as high-quality alternative accessories selected for reliability in dusty, wet, and high-vibration environments.

Flexible options include short-term hire, long-term hire, lease purchase, or outright purchase.

KEY FEATURES:



CRYSTAL CLEAR COMMUNICATION



UP TO 40% BETTER BATTERY LIFE



INCREASED PROFIT BY LOWERING OPS COSTS



SERVICE & PREVENTATIVE MAINTENANCE



INCREASED CHANNEL CAPACITY EQUIPMENT



ADDITIONAL FUNCTIONALITY



MOTOTRBO R2

900PTT PUSH TO TALK

Wide-area communication
designed for safety and
operational control.

900PTT provides reliable and wide area coverage, without the need to invest in the expensive infrastructure often associated with Two Way Radios when covering long distances. The system provides an efficient communication system that is perfectly suited to a wide array of applications for various industries.

Offering an experience similar to a two-way radio, 900PTT leverages 4G/LTE, Wi-Fi, and satellite networks to deliver instant push-to-talk communication at the touch of a button.

This solution is particularly suited to site managers, logistics teams, supervisors, and lone workers, ensuring constant connectivity wherever work takes place.

DESIGNED FOR SAFETY & OPERATIONAL CONTROL

900PTT supports a wide range of safety-critical features, including:

- Lone worker monitoring
- Location tracking & mapping
- Emergency alert handling
- Individual & group calling
- Call & message logging

All without expensive infrastructure investment. As a fully managed service, 900PTT is supported by Ninehundred's experienced technical team, ensuring reliable performance, secure configuration, and ongoing system optimisation.

SUPPORT WHEN CONNECTIVITY MATTERS...

As a fully managed service, 900PTT is supported by Ninehundred's experienced technical team, ensuring reliable performance, secure configuration, and ongoing system optimisation.

KEY FEATURES:



CALL & MESSAGING LOGS



INDIVIDUAL & GROUP CALLS



JOB TICKETING



ALARM HANDLING



LONE WORKER



EXISTING DEVICE COMPATIBILITY

WAVE PTT APP



MOTOTRBO ION



WAVE TLK110



PPE & SAFETY GEAR



Control your own safety with our personal protection equipment

Ninehundred Communications are committed to providing the very best products that allow our customers to act fast in their forever changing and challenging environments. Our PPE Solutions Division was born, a division ensuring the safety of customers is the priority it should be.

Our company takes pride in providing a versatile range of respiratory equipment, featuring modular systems that cater to the specific needs of end-users and diverse tasks. Our portfolio includes full and half masks, along with air-fed and non-airfed systems, showcasing a commitment to flexibility in design.

The recent addition of plug-and-play Temperature Screening Terminals enhances your product line's comprehensiveness. These terminals offer a rapid setup for monitoring skin-surface temperature and verifying face mask usage. This dual functionality aligns with the current emphasis on health and safety, ensuring a holistic approach to workplace well-being.

By combining these respiratory solutions with advanced temperature screening capabilities, your company stands out in providing a suite of tools to create a safe and healthy work environment.

PELTOR HEADSETS

Suitable for work in Pulp and Paper, Construction, Airport applications and other workplaces where the workers need to be connected to their 2-way handheld or fixed systems throughout the day to help facilitate frequent contacts with co-workers. PELTOR™ headsets will bring hearing protection and communication in noisy environments into a new level of performance with newly designed speakers and microphone. The dual mold cup give a modern and slim look together with bright yellow colour for enhanced visibility.

KEY FEATURES:



PROTECTS AGAINST HARMFUL MATERIALS



HANDFREE COMMUNICATION



WATER TIGHT MICROPHONE



SLIM CUP DESIGN



NOISE CANCELLING



ENHANCED VISIBILITY



3M PELTOR FLX2 HEADSET



3M PELTOR LITECOM HEADSET



900ECO LIGHTING TOWER

900Eco Tower, a bespoke solution that can be adapted to include additional features and functionality based on requirements

This 900Eco Lighting Tower will give you all the light you need - and more. With a total of 240,000 lumens and a hydraulic mast extending up to 8 meters, the trailer can be used in an array of applications, including; construction sites, track-side, security and events. Rental and Purchase options available.

Portable and quick to set up, this lighting tower has an extendable hydraulic mast, a durable, steel body and adjustable stabiliser legs. The lighting tower, once deployed, supplies a vast amount of light for a massive duration of time. Highly reliable with the best construction materials used to make it, you can use this product during any terrain as long as there is a flat surface for the product to stand. This allows for the best light possible.

With 4 powerful LED lamps producing 240,000 Lumens, the lighting tower has a range of up to 60 metres. This provides an effective and efficient lighting solution for night time working and security in which the LED lamps can be used to the best of their ability. The lamps are able to flick off and on effortlessly with maximum brightness applied, making them perfect for working quickly.

KEY FEATURES:



ADJUSTABLE MAST



DURABLE BODY



DIESEL ENGINE



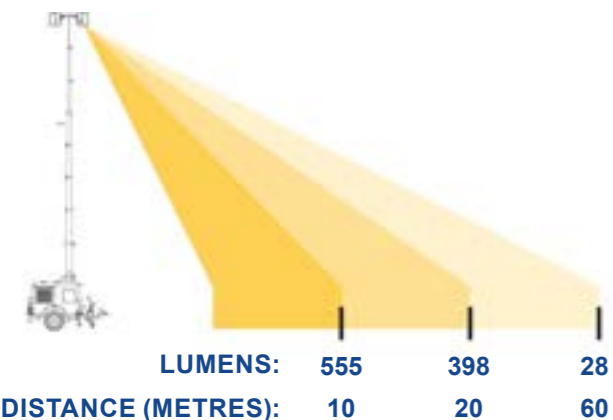
240,000 LUMENS



STABILISING LEGS



EASILY TOWABLE



900ECO STATIC LIGHTING TOWER

A heavy duty floor mounted lighting solution with increased fuel capacity

This 900Eco Static Lighting Tower will give you all the light you need - and more. With a total of 262,500 lumens and a hydraulic mast extending up to 8 metres, the tower can be used in an array of applications, including; construction sites, trackside, security, events and much more.

Portable and quick to set up, this static lighting tower has an extendable mast and a durable steel body. The tower, once deployed, supplies a vast amount of light for a massive duration of time. Highly reliable with the best construction materials used to make it, you can use this product during any terrain as long as there is a flat surface for the product to stand. This allows for the best light possible.

With 4 powerful LED lamps producing 262,500 Lumens, the static lighting tower has a range of up to 60 metres. This provides an effective and efficient lighting solution for night time working and security in which the LED lamps can be used to the best of their ability. The lamps are able to flick off and on effortlessly with maximum brightness applied, making them perfect for working quickly.

With a water-cooled diesel engine supplying 3.5kVA through platelet rich plasma lights ensuring bright light for whatever job necessary.

KEY FEATURES:



262,500 LUMENS



8M ADJUSTABLE TOWABLE



EFFICIENT LEDES



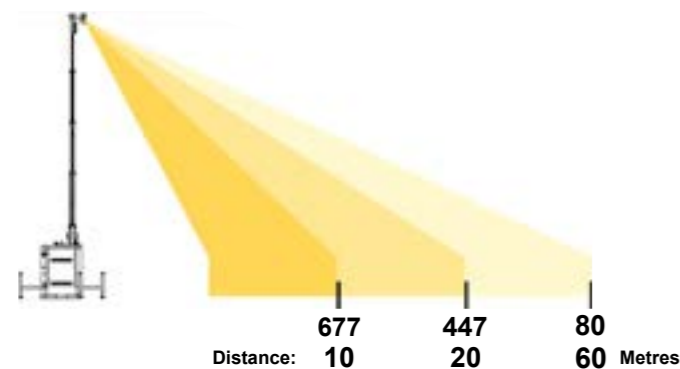
CE MARK COMPLIANT



RANGES OF 60 METRES



PLATELET RICH LIGHTS



900ECO SOLAR COMPOUND LIGHT

Eco-conscious, adaptable lighting for diverse industrial environments

The 900Eco Solar Compound Light exemplifies eco-friendliness through its integrated solar panel and lithium battery, minimising energy consumption and reducing your carbon footprint. With sustainable operation at its core, it illuminates spaces while preserving the environment.

Elevate your business with the game-changing 900Eco Solar Compound Light. Standing tall at an impressive 5 meters, it emits a brilliant 16,000 lumens, revolutionising illumination for rail yards, construction sites, and beyond. Its cutting-edge integrated solar panel and high-capacity lithium battery not only exemplify eco-friendliness but also substantially reduces energy costs, thereby promoting sustainability and cost-effectiveness. The added advantage of a remote deployment system ensures swift setup, enhancing operational efficiency and adaptability to various environments.

The versatility of the 900Eco Solar Compound Light makes it ideal for a range of locations, from bustling construction sites to expansive car parks and dynamic rail construction areas. Its adaptable design and powerful illumination ensure safety, productivity, and visibility across diverse environments, enhancing operations and lighting up spaces with unmatched efficiency. Illuminate your path to success and showcase your commitment to innovation and environmental responsibility with the brilliance of the 900Eco Solar Compound Light.

KEY FEATURES:



5 METERS
MAXIMUM HEIGHT



16,000
LUMENS



LED
LAMPS



SOLAR
POWERED



REMOTE
SYSTEMS



BLUETOOTH
APP COMPLIANT



900PORTABLE LIGHTS

Powerful, portable lighting designed to support safer, more efficient operations

Night work on construction sites demands lighting that's reliable, resilient, and ready the moment it's needed. Our portable lighting solutions are designed to keep crews safe, visible, and productive, even in the most challenging low-light conditions.

Our portable lighting range is engineered for the demands of construction sites, delivering powerful, reliable illumination across busy, uneven, and low-visibility environments. With lightweight yet durable aluminium bodies, rotatable light heads, and lift heights of up to 3.4 metres, these units provide wide 360° coverage and adjustable brightness to suit any task or work zone.

High-capacity battery systems, multi-pack storage options, and fast-charging technology ensure long, uninterrupted operation, while weatherproof construction and rugged stability features—such as self-locking legs and terrain-ready wheel designs—keep them dependable in all conditions. From ultra-quiet, zero-emission models to compact units designed for rapid single-person deployment, each solution offers safe, flexible, and efficient lighting that supports construction teams working through extended hours and challenging site conditions.

KEY FEATURES:



ADAPT TO VARIOUS APPLICATIONS



ULTRA LONG ENDURANCE



WATERPROOF DESIGN



FAST CHARGING



0 CARBON EMISSIONS



360 ULTRA WIDE LIGHT COVERAGE

D24 - 100 LITHIUM-ION BATTERY PACKS

The battery packs can be bought with the product or be bought separate. They can be recharged every 3 months in storage. With a lifespan of 1000 cycles and an active LED power display, to easily show what charge you are on.



900ECO STAIR-SAFE



900ECO

Implementing solar technology, the 900Eco Stair-Safe provides all year round LED lighting to external staircases

Implementing solar technology, the 900Eco Stair-Safe provides all year round LED lighting to external staircases. Using Push Buttons to trigger LED light bars, illuminating stairs when there is no natural light. Created using a modular design, the 900Eco Stair-Safe is adaptable to just about any staircase.

The 900Eco Stair-Safe works by harnessing sunlight via a high area solar panel and converting it to usable energy; this energy is stored in our high-capacity battery.

When natural light is no longer sufficient, the Push Buttons trigger the LED lightbars and illuminate the stairway to create a safer environment.

Created using a modular design, the 900Eco Stair-Safe is adaptable to just about any staircase; reducing risk and increasing safety. The 900Eco Stair-Safe can be implemented onto almost any application, whether this be a staircase, walkway, or access point. Anywhere light is needed outdoors, the stair safe will increase safety whilst being sustainable and reliable.

The 900Eco Stair-Safe is also used mainly during winter months to help combat darker days and longer nights. The system typically lasts longer in summer months, as there is more direct sunlight.

KEY FEATURES:



SELF SUSTAINABLE



EASILY ADAPTABLE



SELF INSTALLED



PROVEN TO INCREASE SAFETY



REDUCED RISKS



EMC CERTIFIED

900ECO APPLICATIONS

The 900Eco Stair-Safe effortlessly enhances visibility in various settings, from strip lighting applications in sunlight to shaded areas. Witness the transformation in the image to the right—once obscured cabins in a hold are now brilliantly lit, eliminating the need for torches or headlights and significantly improving efficiency.



CCTV & ALARM SYSTEMS

Ensure all equipment is safe, secure and fully functional at all times

Our top of the range CCTV systems and motion detectors allow the end user to remotely and cost-effectively monitor places, people or manufacturing plants, all whilst securing sites. Not only does CCTV capture evidence, they also serve as an incredibly effective visual deterrent.

Site security is a fundamental part of every construction and quarrying project. Theft, vandalism, and unauthorised access can disrupt operations and cost thousands in lost productivity. Our solutions combine Rapidly Deployable CCTV Towers, alarm monitoring, remote access control, and solar-powered off-grid systems to keep your site fully protected.

Cloud storage provides almost unlimited space, so there's no worry about overwriting old footage, and it frees up space at your location. As your camera network grows, it can easily expand to meet your needs without extra storage costs.

- Access live footage and recordings from any device.
- Regular backups ensure data is always protected.
- Intuitive dashboards for easy navigation and management.
- Easily add new cameras or storage capacity as needed.
- Different user levels can be granted access to specific footage or features.

KEY FEATURES:



VEHICLE MOUNTED CAMERAS



NETWORK CAMERAS



CCTV MONITORING



HIGH QUALITY IMAGERY



RAPID CCTV DEPLOYMENT



SOLAR POWERED CCTV



900ECO 4G SOLAR CCTV TOWERS

No power required and rapidly deployed to site

An integrated solar powered CCTV system consisting of a Solar Panel with Maximum Power Point Tracking (MPPT) Charging Controller and Mounting Brackets. A fully featured, smart, low power consumption PTZ Network Camera with an AI Chip and remote monitoring over a 4G Network.

The 900Eco 4G Solar PTZ Camera has a variety of applications to suit your needs...

These solar powered CCTV solutions provide a stable power supply to the PTZ camera with a high conversion charging controller. The combination of an efficient power supply and low power consumption camera make this system ideal for the UK climate and operating conditions.

Part of our 900Eco range, these solar powered CCTV solutions can be installed in a range of locations, such as rail, farms, courtyards, scenic spots, roads, communities, construction sites and many other places.

900ECO 4G SOLAR CAM TRAILER

This 900Eco Solar 4G Cam Trailer provides a sustainable solution that is ideal for sites without mains or electricity. The lightweight trailer makes for easy transportation allowing it to be rapidly deployed to provide an efficient and effective solution without the need for fixed infrastructure.

900ECO 4G SOLAR CAM COLUMN

This 900Eco Solar 4G Cam Column offers a stable sustainable CCTV Solution. Complete with an integral lockable cabinet, the tilt over mast allows you to easily collapse the camera for maintenance and cleaning. The camera is mounted upon a concrete block which maximises stability and acts as a great theft deterrent.

KEY FEATURES:



SILENT OPERATION



PERIMETER DETECTION



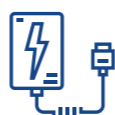
RAPIDLY DEPLOYED



INCREASES SAFETY AND SECURITY



SELF SUSTAINABLE



NO HARD WIRING REQUIRED

Camera Overview:

- 125W Monocrystalline Solar Panel
- IVS Perimeter Protection
- Sound & Light Alarm
- 32x Optical Zoom
- Starlight Technology
- Remote Monitoring
- Siren and Light Deterrence



900SITE CCTV TOWER



Protect people, sites and assets with temporary, fast and secure protection

The 900Site CCTV Tower is used for the protection of sites, temporary installations and supporting on-site, manned guarding. With this application, damage is kept to a minimum, you can monitor work-flow and the surrounding area, protect your infrastructure, whilst also improving security for multiple site locations.

The 900Site CCTV Tower is the perfect application, to keep your workforce and your work environment safe. Our 900Site CCTV tower is designed to be rapidly deployed and easy to manoeuvre giving you freedom on where you can place it. The tower is versatile which makes it a perfect solution for almost any space such as, constructions sites, public spaces, events, railway and more.

Our tower offers a visual deterrent and can be installed and operational in a matter of minutes. You can view the cameras from anywhere through the Hik-Connect app, allowing you to change camera views, check live video feeds, get event notifications, communicate remotely with two-way audio, and more.

Our CCTV Tower is fully fit with a diverse set of cameras, including the Tandem Hikvision network Cameras. These cameras benefit the whole site, allowing full visibility of the entire operation, keeping an eye on your workers, equipment, infrastructure and much more. The kit also offers alternate equipment, such as our wireless.

KEY FEATURES:



FACE CAPTURE



ANTI VANDALISM



RAPIDLY DEPLOYED



6 METRE MAST HEIGHT



LOW POWER CONSUMPTION



STABILISING LEGS



900ECO SOLAR LIGHT

Installation is quick with
minimal disruption to site

The 900Eco Solar light is a slim, modern LED arena light and flood light. Featuring the latest passive-Infrared (PIR) motion sensor technology, the light can detect movement within several metres of the unit and automatically regulates the output of the LED lamp from a 'dim mode' to 'full-brightness'.

An all-in-one solar powered light, the 900Eco Solar Light features a built-in 21W 13.5V mono-crystalline solar panel to charge the hugely powerful 9.6V 12Ah internal lithium battery in just 8-10 hours. The passive infrared (PIR) motion sensor boasts a detection distance of 12 metres.

The LED module adopts CREE® LED lamps for a high lumens, bright beam. Featuring ALS and TCS technology. This light can operate for 12 continuous hours without recharge. These technologies utilise the battery power accordingly throughout the night to ensure high battery life and superior runtimes.

The 900Eco solar light operates automatically from dusk through to dawn and features Smart lighting modes to adjust the brightness of the lamp when motion is detected.

SPECIFICATIONS:

- Next generation LiFepO₄ battery
- Automatic, smart lighting modes
- High-efficiency Crystalline solar panel
- 3-6 Meter install height
- 8-10 Hour charge

KEY FEATURES:



5000
LUMENS



8-12 METER
PIR DETECTOR SYSTEM



12 HOUR
RUN-TIME



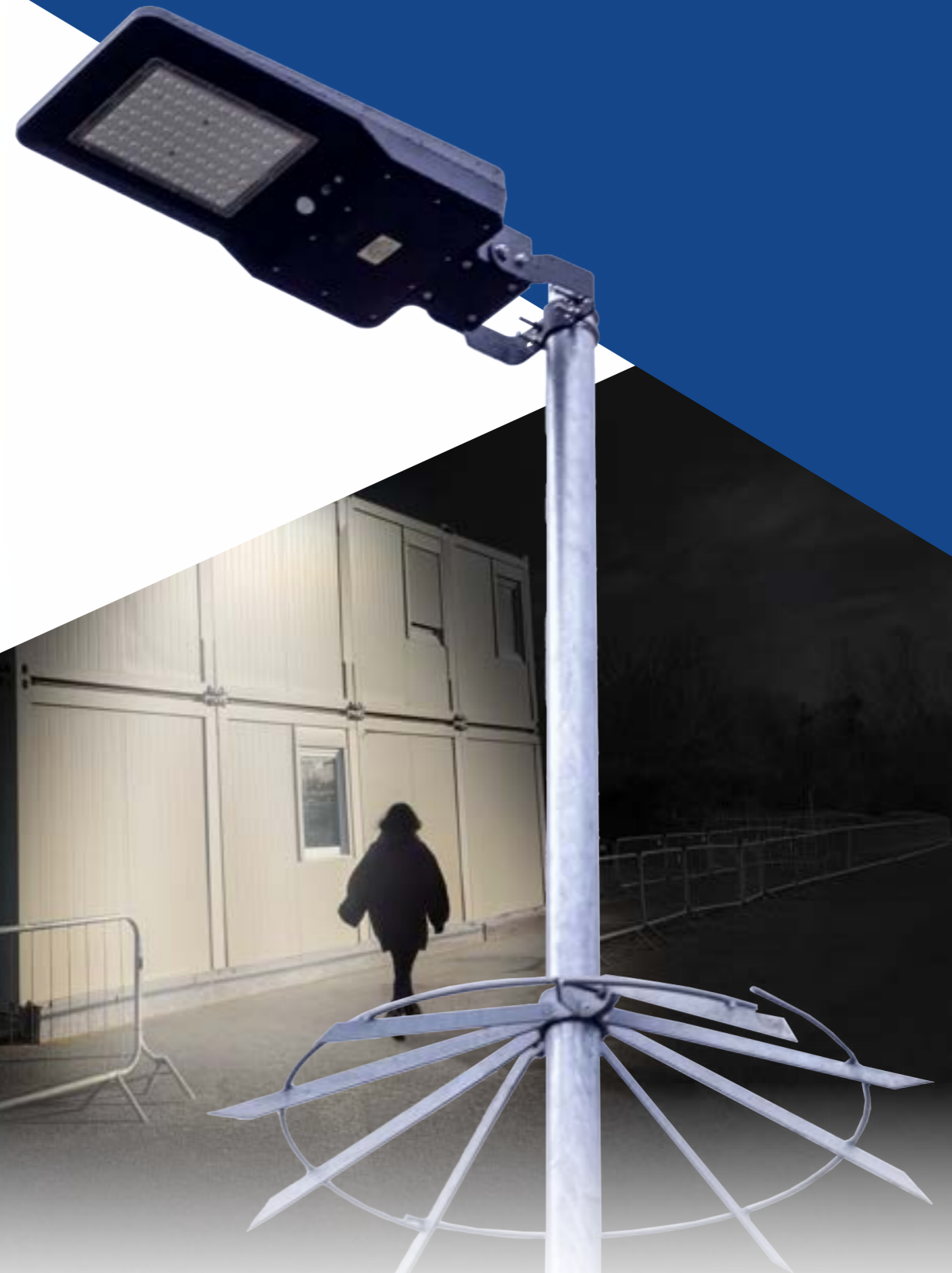
IP65
RATED



DUSK TILL DAWN
TURN OFF



REMOTE
CONTROL



BODY WORN CAMERAS

Support safer, more transparent construction sites with Body Worn Cameras

Better than your average body-cams, featuring push-to-talk communication over cellular and PMR networks, best-in-class audio performance, high-definition video shooting and streaming. These robust, IP68 rated body worn cameras are ultra thin and can easily be held in your hand or clipped to work wear.

MOTOROLA

Designed to withstand the toughest site conditions, Motorola's body cameras are built for demanding construction environments, helping to protect your workforce and support safer, more accountable operations. With a rugged exterior, secure mounting options, and a weather-resistant design, these body cams stay reliable throughout every shift—no matter the weather, terrain, or task at hand.

HYTERA

Hytera's Remote Video Speaker Microphone (RVM) is designed to capture, store and share media including audio, image and video evidence taken from the field. The body-worn camera with remote speaker phone allows users to make and receive voice communications, initiate an emergency alarm, and deliver real-time video to a control centre over the LTE network, even in low-light conditions; when paired with the Hytera Multi-mode Advanced Radio.

KEY FEATURES:



POC / 9TT
RADIO



LIVE STREAM
ENABLED



WATER
PROOF



INFRARED
NIGHT VISION



LONG
BATTERY LIFE



GPS
ENABLED



900VMS
VIDEO MANAGEMENT SOFTWARE
Available soon.

900SITE SECURE



Manage your site to keep it secure and intruder-free whilst also being sustainable

900Site Secure manages your site, keeping intruders at bay, leaks and fires under announcement and much more. The whole set is remotely installed and completely solar efficient. With the ability to reach up to 2,000 metres away with some products and even more with others, this kit is perfect for most site locations.

HUB

900Site Secure Hub manages all the devices in the system to alert users about open doors, broken windows, threats of fire and flooding. If break ins occur, it will notify the monitoring station and send photos from the detectors. You won't need to live under the constant supervision of the security cameras to know what's going on.

MOTIONCAM

The 900Site Secure MotionCam is a wireless motion detector for outdoor use with an in-built photo camera. Photos are taken only in case of motion alarm. 900Site Secure MotionCam provides users and security companies with fast and protected visual verification of alarms.

SIREN

900Site Secure Siren is flexible when it comes to settings which makes it as relevant in a quiet gated community as in a loud industrial area. The buzzer can be set to generate sound from 85 to 113 dB for an adjustable period: from 3 seconds to 15 minutes.

LEAK PROTECT

900Site Secure Leak Protect is a wireless addressable flood detection device. Which can protect your home from broken pipe leaks with four pairs of contacts for detecting first signs of flooding, perfect for household places where you can't quite see but know there are possible chances of leaks or other breaches.

KEY FEATURES:



AUTOMATE
SECURITY



RESISTANT
TO SABOTAGE



3 YEARS
BATTERY LIFE



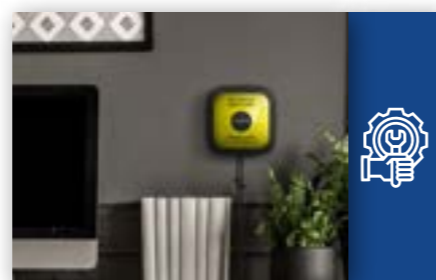
HASSLE FREE
INSTALLATION



VISUAL ALARM
NOTIFICATIONS



SOLAR
POWERED



900SITE SENTRY

Protect people, sites and assets with temporary, fast and secure protection

The 900Site Sentry is the perfect application for all work areas in need of a sturdy device that can be used remotely. Our rapidly-deployable sentry unit is able to be controlled through solar power, utilising the day and working through the night, on alert from any intruders.

The 900Site Sentry is an in-field, rapidly deployed, visual deterrent that houses a chosen selection of 900Site Secure devices, all of which help the armoured husk keep a maintained view from all angles, night or day, once it is placed.

The 900Site Sentry is maintained and managed by our 900Site Secure Hub, this then offers visual verification that can instantly assess the situation. Communication with the outside world is critical for the security system control panel. Its reliability and stability guarantee timely alarm transmission to the security company and users. The hub is the main component of the 900Site Sentry as it manages all of the other devices in the system.

The cameras that are used have motion sensors built in, allowing for the system to activate once both sensors are set off. If they are both set off, the camera will take a series of photos and compile them to make a moving image sequence. Photos are transmitted via an encrypted proprietary radio protocol and displayed in the correct set apps or third-party monitoring software.

The final device in the system is placed on the top of the system. The 900Site Secure Siren needs less than a second to activate a powerful siren and bright LED indicators in response to an alarm signal. Any break-in will be immediately exposed. LED indication and short beeps of the buzzer remind users that premises are armed and delay when entering feature is active.

KEY FEATURES:



SOLAR EFFICIENT



WIRE FREE UNIT



RAPIDLY DEPLOYED



REMOTELY CONTROLLED



EASY INSTALLATION



VISUAL DETERRENT



900HYBRID TRAUMA KIT



The ultimate emergency response equipment for any environment

The 900Hybrid Trauma Kit is designed to combine defibrillator and advanced First Aid equipment. This helps rescuers by giving them essential items required in a major incident - from sudden cardiac arrest to catastrophic bleeds, all treatable from a carry-on rucksack.

This innovative device, equipped with a comprehensive first-aid kit and a defibrillator, stands resilient against even the harshest weather conditions, making it indispensable for remote working environments. Within its compact design, it houses a range of wound care essentials, thoughtfully organised with colour-coded and clearly labelled compartments, ensuring prompt and accurate administration of first aid during critical situations. With these ground-breaking advancements, the 900Hybrid Trauma Kit sets a new standard for the future of emergency medical care, promising swift and effective intervention when every second counts.

CPR ADVISORY

Inside is a Samaritan® PAD which features an audio function, guiding the rescuer through effective CPR with advice on compression pressure and speed based on real-time feedback from the casualty's heart. Unlike other devices, the advice provided takes into account impedance changes of the casualty, prioritising the patient's chances of survival.

OTHER MODULES

The 900Hybrid Trauma Kit device boasts a comprehensive array of features to address diverse medical needs in emergency situations:

- Cuts & Grazes Module
- Burn Module
- Trauma Module
- Eye Module
- Dressing & Bandages Module
- RapidStop® Tourniquet Module

KEY FEATURES:



ONE BUTTON OPERATION



DUST & MOISTURE PROTECTION



USER FRIENDLY



DURABLE CASING



AUTOMATIC SHOCK DELIVERY



ADVANCED TECHNOLOGY



AUDIO CUES

"PUSH FASTER..."

"PUSH HARDER..."

"PUSH SLOWER..."

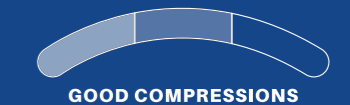
"GOOD COMPRESSIONS!"



AUDIO & VISUAL COMMANDS

Some functions of the Samaritan® PAD are visual and audio commands which help the rescuer from performing poorly.

VISUAL CUES



900SAFETY STATIONS

Instant protection, organised and accessible wherever your site takes you.

When setting up temporary or fast-moving sites, safety provisions can often fall behind. Ninehundred's 900Safety Hub range provides mobile, comprehensive safety stations that bring critical resources directly to your workforce - perfect for construction sites, rail, civil engineering projects, or event operations.

A fully deployable mobile hub combining first aid, fire, and spill response capabilities. Designed for rapid deployment, it can be set up in under 60 seconds without tools or forklifts.

The 900Safety, First Aid, Fire, and Oil Spill Hubs are all designed for rapid deployment, with durable, weather-resistant construction and clear, colour-coded signage. Each unit is mobile, secure, and easy to relocate, ensuring safety provisions are always in the right place when you need them.

Every hub is built to support real-world site challenges. From pre-stocked medical supplies and dual fire extinguishers to oil-only absorbents and integrated alarms, our hubs provide everything your team needs to respond immediately to incidents. They're customisable, reusable, and designed to keep operations running smoothly while keeping staff and assets protected.

KEY FEATURES:



ON-DEMAND RESPONSE



FULLY STOCKED



HIGHLY VISIBLE



BUILT-IN ALARM



CUSTOMISABLE DESIGN



SECURE STORAGE



900SAFETY HUB

A fully deployable mobile hub combining first aid, fire, and spill response capabilities. Designed for rapid deployment, it can be set up in under 60 seconds without tools or forklifts.

900 MODULAR BUILDINGS

A bespoke, environmental sustainable site solution. Providing engineers, employees and management a comfortable working space

These modules provide a environmental sustainable solution for sites, to accommodate to their needs and provide a functional working space. Every cabin is fitted with office space, toilets, showers, a dry room, kitchen and a meeting room. We offer services such as, water deliveries and effluent collections.

The modular buildings supplied by Ninehundred Communications come in a variety of layouts, with improved workspaces. This meaning that the open planned areas can be either huge or tight and compact whilst also suiting workers needs, by giving them compartments and other features that would help workflow and also boost morale to keep people happy.

Our modular buildings are energy efficient and 'B' energy rated. This allows you to save energy costs and create a more pleasant working environment. The lights are also fitted with PIR (Passive Infra Red) Technology and will save energy costs.

Our cabins are vandalism protected, with gas filled double glazed tilt and turn windows with roller shutters, ensuring protection. Our cabins are also locked tight with multi-locking windows and doors, with guarantee to keep the workers inside safe, whilst also protecting your equipment and other valuable items.

KEY FEATURES:



ENERGY SUFFICIENT



VANDALISM PROTECTION



NOISE REDUCTION MEASURES



TEMPERATURE CONTROL



ENSURING SAFETY



ADAPTS TO THE COMPANY



STARLINK BROADBAND

All Sites deserve the
best internet coverage
and signal.

Ninehundred now provides Starlink's high-performance business broadband, delivering reliable internet connectivity to even the most remote locations across the UK. Using advanced satellite technology, Starlink ensures events are never limited by coverage or signal availability.

Ideal for temporary and remote construction environments, Starlink provides fast, stable, low-latency broadband where traditional connectivity is limited or unavailable. This supports essential site operations including project management systems, VoIP communications, CCTV and security monitoring, cloud-based reporting, and real-time access to drawings and plans.

Operating independently of local ground networks, Starlink remains reliable on rural, infrastructure, and short-term sites—ensuring consistent, professional-grade connectivity from initial groundworks through to project completion.

COMMON USE CASES:

- Real-time access to project management systems and drawings.
- VoIP and video calling between site teams and head office.
- Connectivity for CCTV, site security, and monitoring systems.
- Temporary site office and welfare unit connectivity.
- Reliable backup connectivity to maintain operations during outages.

GENERAL PERFORMANCE METRICS:

Download Speed	25–220+ Mbps
Upload Speed	5–25+ Mbps
Latency	20–60 ms
Uptime	99%+ (excluding severe weather or maintenance)

KEY FEATURES:



HIGH SPEED
CONNECTIVITY



WORKS
ANYWHERE



LOW
LATENCY



SCALABLE
FOR YOUR NEEDS



RAPID
DEPLOYMENT



CONSISTANT
RELIABILITY



900POWER GENERATORS



An easy to operate, safe and reliable power supply, with a long cycle life

Ninehundred's innovative range of battery powered generators. A selection of three portable generators designed to provide reliable and efficient power to areas where it's needed the most. Perfect for both industrial and residential applications.

Engineered for emergency situations, our portable generator is ideal for providing essential power during natural disasters. Its robust design makes it well-suited for use on large or remote construction sites, ensuring seamless operation of power tools and lighting. Perfect for outdoor enthusiasts, the generator powers appliances and lighting for camping trips, making it an essential companion for camp sites and various recreational activities. With a focus on portability and efficiency, this battery generator is the go-to choice for anyone seeking a dependable and convenient power source in challenging and off-grid environments.

Featuring a next-gen LiFep04 battery for unmatched durability, automatic smart lighting modes for efficiency, and a high-efficiency crystalline solar panel for a rapid 8-10 hour charge. With a versatile 3-6 meter install height, 900Power redefines outdoor lighting, blending cutting-edge technology with sustainability for a brighter future.

KEY FEATURES:



QUICK SET
IN AN EMERGENCY



EASY TO
TRANSPORT



LCD BATTERY
STATUS INDICATOR



RELIABLE PURE
SINE WAVE OUTPUT



ROBUST
PROTECTIVE CASES



MULTIPLE
OUTLET VOLTAGES

ALL GENERATOR OUTPUTS:

CONTINUOUS
500W
800W
PEAK

CONTINUOUS
800W
1600W
PEAK

CONTINUOUS
1600W
3600W
PEAK



RATED
3600W
5000W
PEAK

RATED
5000W
7000W
PEAK

SITE OFFICE EQUIPMENT

Essential Technology for Modern Site Offices

Ninehundred Communications Group's Site Solutions Division delivers practical, reliable technology for temporary and remote site environments. Designed for locations where standard office systems don't translate easily, our solutions ensure site offices remain connected, productive, and secure from day one.

We specialise in deploying ready-to-use site office technology, enabling teams to work efficiently on-site while maintaining seamless communication with head office, contractors, and stakeholders.

SITE OFFICE EQUIPMENT

We provide a comprehensive range of site-ready equipment to support day-to-day operations, making full use of your existing connectivity to deliver cost-effective, scalable solutions.

Whether you're setting up a short-term project office or a long-running site compound, our equipment supports collaboration, communication, and essential admin functions without unnecessary complexity.

OUR SITE OFFICE EQUIPMENT INCLUDES:

- **Site Laptops** – pre-configured, secure, and ready for immediate use
- **VoIP Desk Phones** – reliable voice communication between site and office
- **Mobile Phones** – flexible communication for site managers and teams
- **Site Printers & MFDs** – printing, scanning, and copying for drawings and documentation
- **Monitors & Screens** – improved visibility for plans, schedules, and reporting

All equipment can be supplied, configured, and supported to ensure rapid deployment and minimal downtime.



KEY FEATURES:



SATELLITE BROADBAND



GUARANTEED TO LAST



SECURE & SAFE



EASILY REPLACEABLE



HIGH QUALITY PRODUCTS



DESIGNED FOR VERSATILITY



900 INDUSTRIAL ENDOSCOPE

Make it easy to navigate and inspect hard to reach areas.

Engineered for the confined, complex spaces found on construction sites, this dual-camera endoscope gives teams a clear advantage during inspections. Its forward- and side-view lenses deliver precise visibility, while ergonomic one-handed control keeps operation smooth and efficient.

The endoscope gives inspectors a robust, flexible way to assess hard-to-reach areas on site, with dual forward- and side-view cameras that make navigating tight, complex spaces far easier. Its ergonomic design allows all key functions to be operated with one hand, while built-in snapshot and recording features let users capture photos and videos directly to a Micro-SD (TF) card for easy review and reporting.

BENEFITS OF THE DUAL CAMERA

- The dual cameras offer both forward and side views, making it easier to navigate and inspect tight or complex spaces.
- Switching cameras without removing the probe saves time and boosts productivity.
- High-resolution images and videos with sound that ensure clear, detailed records for analysis and reporting.

KEY FEATURES:



DUAL LENS
FUNCTIONALITY



HD
DISPLAY



LONG
BATTERY LIFE



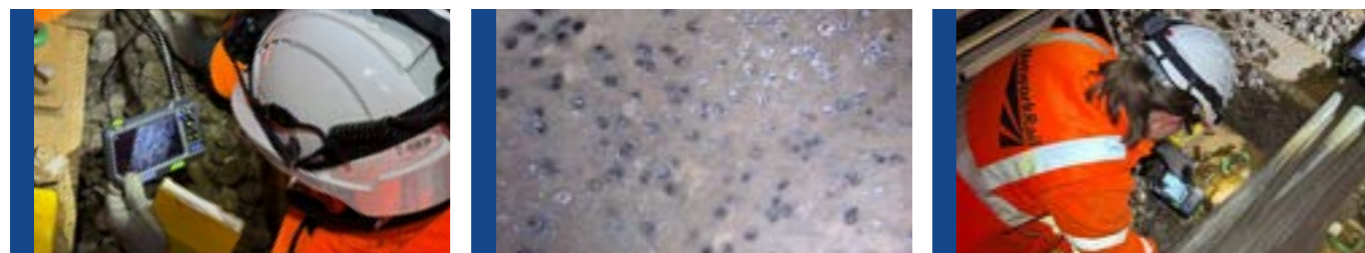
WATERPROOF
PROBE



STORAGE &
RECORDING



LED
ILLUMINATION



VISITOR MANAGEMENT

Manage all personnel in a user friendly & efficient way, helping comply with GDPR

The award winning touch-screen visitor management system replaces traditional, paper-based visitor books often found on reception desk, 900EntrySign simplifies the process of signing visitors, staff, contractors and students in and out of your premises.

The 900EntrySign System is your ultimate solution for streamlined personnel management, offering an efficient and user-friendly approach to handling individuals with varying competencies. This sophisticated system is underpinned by robust software, making it an ideal fit for a wide range of industries. What sets it apart is its tailored approach – it's a bespoke product designed to adapt seamlessly to your specific on-site needs, thanks to our innovative bolt-ons.

Our selection of bolt-ons opens up a world of customisation possibilities for your 900EntrySign system. Whether you're interested in on-demand ID card printing for quick and secure identification or wish to strategically deploy RFID terminals across multiple locations within your facility. With these versatile bolt-ons, you have the freedom to curate a visitor management system that perfectly aligns with your unique requirements.

In an era where adaptability and efficiency are paramount, the 900EntrySign System empowers you to take control of your personnel management processes. It not only caters to your current needs but also provides a foundation for future growth and security enhancements. Experience the intersection of innovation and customisation, all within the robust framework of the 900EntrySign System.

KEY FEATURES:



REPLACES VISITOR BOOKS



KEEP TRACK OF ALL VISITORS



REMEMBER VISITORS



ONE CLICK REPORT



GDPR COMPLIANT



CUSTOM INTERFACE



TELEMATICS SOLUTIONS

Options for permanent hard-wired devices or temporary plug & play self installation devices depending on your requirements

Our Telematics Solutions Division provides a tracking solution tailored for all sectors and fleet sizes, covering basic GPS tracking to comprehensive fleet management. It combines in-depth data capture and state-of-the-art hardware, with a particular focus on advanced telematics.

We deliver fully integrated systems including vehicle tracking, high-definition cameras, Live DVR, asset and plant monitoring, immobilisation and compliance support. By consolidating GPS data, driver behaviour analysis, vehicle health insights and real-time video, we provide complete operational visibility through a single, intuitive platform.

Solutions are available as temporary plug-and-play installations or permanent hard-wired systems, depending on operational requirements. From Direct Vision Standard (DVS) compliance and cold chain control to theft prevention and remote monitoring, our technology is designed to enhance safety, reduce risk and protect valuable assets.

Supported by over 45 years of industry experience and delivered by fully accredited engineers, our Telematics Division works collaboratively with customers to design, install and maintain scalable systems. The result is improved efficiency, strengthened security and data-led decision-making across every fleet operation.

KEY FEATURES:



LIVE GPS TRACKING



PLANT TRACKING



VEHICLE CHECK



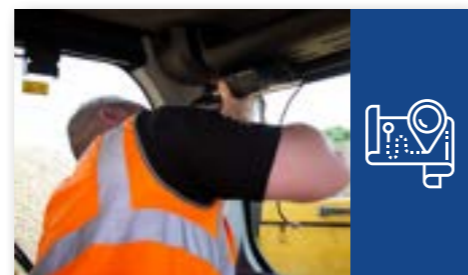
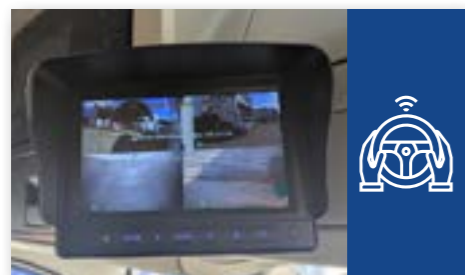
DASHBOARD CAMERAS



DRIVER BEHAVIOUR



VEHICLE SAFETY REPORT



COMMUNICATE ANYTIME, ANYWHERE



Ninehundred
Communications
Group



For more information &
to view our accreditations,
Scan here!

Keep up to date with our latest news!



0845 600 4 900

www.ninehundred.co.uk
sales@ninehundred.co.uk

White Rose Way | Doncaster Carr | Doncaster | DN4 5JH

Ninehundred Communications Group does not accept any liability. All specifications are subject to change without notice.

Ninehundred Communications Group holds accreditations and memberships, typically, by way of annual external auditing to provide you with peace of mind that you are dealing with a company who is continually striving to improve performance.