



Ninehundred
Communications
Group

CONSTRUCTION SOLUTIONS



TWO WAY
RADIOS



RAIL
SOLUTIONS



SECURITY
& ELECTRICAL



ECO FRIENDLY
SOLUTIONS



IT
SOLUTIONS



SITE
SOLUTIONS



TELEMATICS
SOLUTIONS



VOICE
& DATA

CONSTRUCTION SOLUTIONS

Control your construction site with a broad range of solutions

We specialise in providing comprehensive Construction Solutions for your business, encompassing a range of essential tools and services such as Two Way Radios, Remote Call Points, Site Secure, Eco Lighting, Eco CCTV, Modular Buildings, 900Hybrid Trauma Kit, Tracking, Telecommunications, and Networking.

Our company is dedicated to offering an extensive suite of Construction Solutions tailored to meet the unique and multifaceted needs of your business. With a focus on fostering seamless communication, we provide cutting-edge tools with our Two Way Radio solutions ensuring real-time and efficient connectivity across your construction site.

Prioritising safety and security, our comprehensive offerings include remote call points and state-of-the-art security solutions, creating a fortified environment for your construction activities.

Recognising the imperative of sustainability, we offer Eco Lighting and Eco CCTV options designed to minimise environmental impact while maintaining optimal functionality, making your business stand out from the rest by lowering your carbon footprint.

Our expertise extends to Telecommunications and Networking solutions, establishing a robust infrastructure for seamless connectivity across your construction site. Whether it's setting up reliable communication channels or establishing a secure network, we possess the technological proficiency to support the success of your construction endeavours. In essence, our Construction Solutions are meticulously crafted to optimise efficiency, enhance safety protocols, and provide the technological backbone necessary for the triumph of your construction projects.

KEY FEATURES:



TWO-WAY RADIOS



REMOTE CALL POINTS



SITE SECURE



ECO LIGHTING



ECO CCTV



COMMUNICATIONS & NETWORKING



TWO WAY RADIOS DIGITAL



We operate one of the UK's largest and best maintained fleet of hire radios

Two-way radios play a crucial role in construction sites, enabling seamless communication for swift decision-making. Their reliability, even in challenging environments, ensures operational efficiency, real-time information sharing, and enhanced safety, making them indispensable tools for modern workplaces.

WHATEVER THE INDUSTRY...

Digital Radios are something we'd argue are critical to an environment where communication is required, be it construction sites or music festivals! Whatever industry your business or event is part of we'll have a Digital Two Way Radio system and solutions that will take your communication to the next level, with increased functionality and features.

WHAT WE OFFER...

We offer a diverse range of accessories and spare parts for two-way radios, catering to a wide range of budgets. We supply genuine equipment and accessories from reputable manufacturers. Offering a selection of high-quality non-original accessories for our radios for those with budget constraints.

Harnessing the cutting-edge advancements in two-way radio technology, our product range enables us to serve a broad spectrum of needs. From straightforward, license-free radios for basic communication to complex multi-site radio systems, our products consistently deliver exceptional performance and robust functionality, owing to our sophisticated application software.

In cases where making a purchase is not feasible, we operate one of the largest and most meticulously maintained fleets of rental radios in the UK. Our inventory includes analogue, digital, trunked, and ATEX radios.

KEY FEATURES:



CRYSTAL CLEAR COMMUNICATION



UP TO 40% BETTER BATTERY LIFE



INCREASED PROFIT BY LOWERING OPS COSTS



SERVICE & PREVENTATIVE MAINTENANCE



INCREASED CHANNEL CAPACITY EQUIPMENT



ADDITIONAL FUNCTIONALITY



MOTOTRBO
R2

900PTT PUSH TO TALK

...without the need of expensive infrastructure, and further functionality when paired with our dispatcher software

900PTT provides reliable and wide area coverage, without the need to invest in the expensive infrastructure often associated with Two Way Radios when covering long distances. The system provides an efficient communication system that is perfectly suited to a wide array of applications for various industries.

Offering an experience analogous to utilising a two-way radio, the 900PTT system leverages the extensive coverage of a cellular network. Tailored primarily for lone workers in educational institutions, many of our 900PTT options come equipped with lone worker tracking software, although they are equally suitable for group activities. 900PTT has swiftly emerged as the preferred push-to-talk communication method for educators, ensuring the safety and connectivity of staff, particularly when they are isolated or dispersed on campus. Moreover, our compatible devices seamlessly integrate with the Desktop Dispatcher Software, facilitating communication between office-based personnel and field-based staff through a PC.

PTT SOLUTIONS FOR EXISTING DEVICES

Utilising powerful software we are even able to turn your existing smartphone into a PTT handset, enabling instant communication at the touch of a button alongside location mapping, multimedia messaging and much more.

KEY FEATURES:



CALL & MESSAGING LOGS



INDIVIDUAL & GROUP CALLS



JOB TICKETING



ALARM HANDLING



LONE WORKER



EXISTING DEVICE COMPATIBILITY

WAVE PTT APP



MOTOTRBO ION



WAVE TLK100



FULL DUPLEX RADIOS

Instantaneous open mic and hands free communication, compatible with industry leading respirator systems

Full Duplex radio systems suited for use in construction, rail, industrial, maritime, security, audio-visual, catering, hospitality, and sporting sectors. You can hold an open mic, audio conference call instantaneously, on a permanent and secure basis.

In many environments, the delay between transmit and receive conversation processed on a traditional two way radio system can have critical consequences.

Providing a communication experience similar to a telephone conversation, our systems give clear and intelligible communication in noisy or challenging environments. Our full duplex radio systems enhance worker safety and help minimise potential damage to assets and infrastructure by eliminating pauses in conversations.

900MULTICOM RANGE

The 900Multicom is an easy to use full-duplex, hands-free multi-user wireless system, that allows full natural conversation between workers. Attached to military grade headsets, this team communications system is an ideal solution for the rail industry.

COMPATIBILITY

The 900Multicom3 and the 900Multicom Supreme CC Headset represent the ultimate solution for noise cancellation and seamless real-time communication within your team. Designed to provide convenience, these headsets are not only compatible with Atex Devices for use in hazardous areas but also incorporate a patented noise filter, ensuring that your conversations remain interference-free, even in the most challenging conditions. Whether you're working in an industrial setting or with critical operations, these headsets deliver the performance and reliability you need to stay connected and focused.

KEY FEATURES:



HANDS FREE
COMMUNICATION



DIGITAL
ENCRYPTION



LICENSE
FREE



CALLS UP TO 16
USERS AT ONCE



RESPIRATOR
COMPATIBILITY



HEADSET & PHONE
CONNECTION



900MULTICOM
SUPREME CC

REMOTE CALL POINTS

Communicate effectively with and secure the most remote locations

Elevate communication and safety on your construction site with our call boxes. Designed for remote locations and dynamic environments, these cost-effective solutions provide a swift and reliable way for construction workers to connect with supervisors or request assistance.

Our remote call points are meticulously designed to precisely match our clients' needs, seamlessly integrating into various communication infrastructures, from entrances to barriers and beyond. Whether you require a simple push-to-talk solution or a complex multi-point system, indoors or outdoors, even in remote locations, we've got you covered.

We take customisation to the next level by offering full branding options for our remote call points. Our in-house design team ensures that these devices not only excel in functionality but also blend with your workspace, enhancing the overall professionalism of your environment.

Our remote call point solutions are built to cater to your unique requirements, providing both exceptional functionality and a seamless, branded appearance. With our commitment to innovation and customisation, you can trust us to elevate your communication needs to the next level.

KEY FEATURES:



SUITABLE INDOORS OR OUTDOORS



WIRELESS WIDE AREA COVERAGE



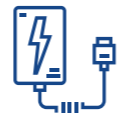
BESPOKE DESIGN



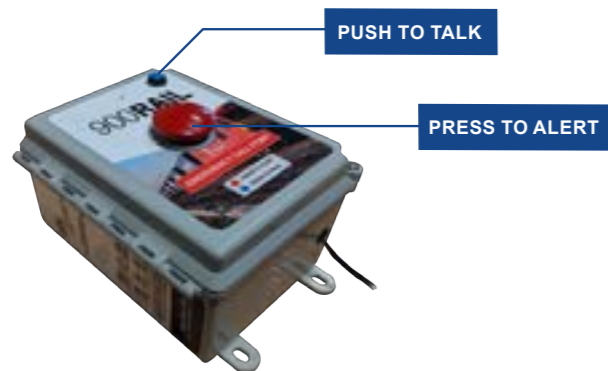
INCREASES SAFETY & SECURITY



WEATHER PROOF



NO HARD WIRING REQUIRED



CCTV & ALARM SYSTEMS



Ensure all equipment is safe, secure and fully functional at all times

Our state-of-the-art CCTV systems, coupled with advanced motion detectors and intruder alarms, empower end users to remotely and cost-effectively monitor locations, individuals, or manufacturing plants. This solution not only captures evidence through CCTV footage but also serves as a highly effective deterrent.

CCTV SYSTEMS, CCTV INSTALLATIONS, CCTV MONITORING AND CCTV MAINTENANCE

As an independent company not tied to a specific manufacturer, we are able to advise on the most cost effective and efficient CCTV systems/solutions and maintenance plans. Our professional team has a wealth of experience across a wide area of operating environments, allowing us to meet the very needs of your event.

Fixed and wireless CCTV systems are available, with or without recording. CCTV can be integrated with a broadband connection to allow streaming across the site, for example, streaming footage from a stage area to a production team.

MORE THAN JUST CCTV CAMERAS

We provide an extensive array of alarm systems, encompassing our Site Secure Range, which incorporates visual deterrents to safeguard extended site operations during both pre and post working hours. Additionally, our comprehensive selection of intrusion alarms ensures the utmost security for your site, offering complete assurance of safety.

KEY FEATURES:



VEHICLE MOUNTED CAMERAS



ALARMS COMPATIBLE WITH CCTV



CCTV MONITORING



DETERS THIEVES



RAPID CCTV DEPLOYMENT



SELF INSTALLED



ECO LIGHTING

ECO Lighting for every problem within a dark construction site

At Ninehundred Communications, via utilising solar and renewable energy, through research and development we are continually adding to our 900Eco portfolio with products that fit perfectly within our specialist divisions, now accommodating to Construction Solutions too!

Embracing a progressive approach, this cutting-edge technology enables the seamless installation of numerous lighting solutions in virtually any environment. What sets our Eco Lighting apart is its distinctive feature of complete self-sufficiency. This groundbreaking characteristic makes it the optimal eco-friendly lighting solution across a diverse array of products and settings, promoting sustainability and energy efficiency.

As experts of ongoing expansion and evolution, our product catalogue remains ever on-going, underscoring our steadfast commitment to crafting solutions characterised by high self-sustainability and self-containment. Within the realm of our 900Eco portfolio, we proudly showcase these endeavours. Through our ergonomically inclined designs, we have successfully engineered top-tier, sustainable, solar-powered products, perfect for your work environment.

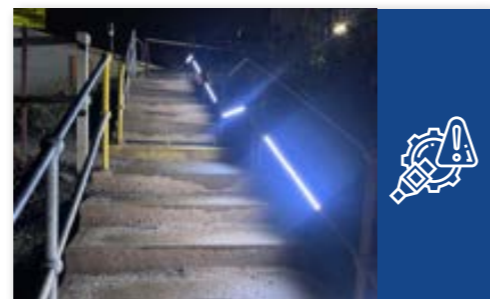
With an unwavering focus on corporate innovation, our products within the 900Eco portfolio contribute to the seamless execution of work events while aligning with a conscientious and eco-friendly approach to any problem.

Our 900Eco Lighting Portfolio includes:

- 900Eco Static Lighting Tower
- 900Eco Portable Lighting Tower
- 900Eco Solar Compound Light
- 900Eco Solar Light
- 900Eco Stair & Cabin Safe

KEY FEATURES:

	
EASILY ADAPTABLE	MULTI-PURPOSE FUNCTIONALITY
	
RAPIDLY DEPLOYED	INCREASES SAFETY & SECURITY
	
SELF SUSTAINABLE	NO HARDWIRING REQUIRED



900ECO STAIR-SAFE

900ECO
AWARD WINNING

Implementing solar technology, the 900Eco Stair-Safe provides all year round LED lighting to external staircases

Implementing solar technology, the 900Eco Stair-Safe provides all year round LED lighting to external staircases. Using Push Buttons to trigger LED light bars, illuminating stairs when there is no natural light. Created using a modular design, the 900Eco Stair-Safe is adaptable to just about any staircase.

The 900Eco Stair-Safe works by harnessing sunlight via a high area solar panel and converting it to usable energy; this energy is stored in our high-capacity battery.

When natural light is no longer sufficient, the Push Buttons trigger the LED lightbars and illuminate the stairway to create a safer environment.

Created using a modular design, the 900Eco Stair-Safe is adaptable to just about any staircase; reducing risk and increasing safety.

The 900Eco Stair-Safe can be implemented onto almost any application, whether this be a staircase, walkway, or access point. Anywhere light is needed outdoors, the stair safe will increase safety whilst being sustainable and reliable.

KEY FEATURES:



SELF
SUSTAINABLE



EASILY
ADAPTABLE



SELF
INSTALLED



PROVEN TO
INCREASE SAFETY



REDUCED
RISKS



EMC
CERTIFIED

900ECO APPLICATIONS

The 900Eco Stair-Safe effortlessly enhances visibility in various settings, from strip lighting applications in sunlight to shaded areas. Witness the transformation in the image to the right—once obscured cabins in a hold are now brilliantly lit, eliminating the need for torches or headlights and significantly improving efficiency.



900SITE CCTV TOWER



Protect people, sites and assets with temporary, fast and secure protection

The 900Site CCTV Tower is used for the protection of sites, temporary installations and supporting on-site, manned guarding. With this application, damage is kept to a minimum, you can monitor workflow and the surrounding area, protect your infrastructure, whilst also improving security for multiple site locations.

The 900Site CCTV Tower is the perfect application, to keep your workforce and your work environment safe. Our 900Site CCTV tower is designed to be rapidly deployed and easy to manoeuvre giving you freedom on where you can place it. The tower is versatile which makes it a perfect solution for almost any space such as, constructions sites, public spaces, events, railway and more.

Our tower offers a visible deterrent and can be installed and operational in a matter of minutes. You can view the cameras from anywhere through the Hik-Connect app, allowing you to change camera views, check live video feeds, get event notifications, communicate remotely with two-way audio, and more.

Our CCTV Tower is fully fit with a diverse set of cameras, including the Tandem Hikvision network Cameras. These cameras benefit the whole site, allowing full visibility of the entire operation, keeping an eye on your workers, equipment, infrastructure and much more. The kit also offers alternate equipment, such as our wireless.

KEY FEATURES:



FACE CAPTURE



ANTI VANDALISM



RAPIDLY DEPLOYED



6 METRE MAST HEIGHT



LOW POWER CONSUMPTION



STABILISING LEGS



ECO CCTV

Oversee all operations with
our sustainable solutions

An integrated solar powered CCTV system consisting of a Solar Panel with Maximum Power Point Tracking (MPPT) Charging Controller and Mounting Brackets. A fully featured, smart, low power consumption PTZ Network Camera with an AI Chip and remote monitoring over a 4G Network.

Introducing our eco-smart solar-powered CCTV solutions from the 900Eco range. These systems guarantee a stable power supply to your selected cameras with a high-efficiency charging controller. Designed for the UK climate, they combine effective power supply with low-power consumption, making them ideal for environmentally conscious surveillance.

Versatile and compact, these solutions find applications in various settings, from rail networks and farms to scenic spots and construction sites. Choose a greener way forward in surveillance technology with our 900Eco range – securing your surroundings with efficiency and environmental responsibility.

900ECO 4G SOLAR CAM TRAILER

This 900Eco Solar 4G Cam Trailer provides a sustainable solution that is ideal for sites without mains or electricity. The lightweight trailer makes for easy transportation allowing it to be rapidly deployed to provide an efficient and effective solution without the need for fixed infrastructure.

900ECO 4G SOLAR CAM COLUMN

This 900Eco Solar 4G Cam Column offers a stable sustainable CCTV Solution. Complete with an integral lockable cabinet, the tilt over mast allows you to easily collapse the camera for maintenance and cleaning. The camera is mounted upon a concrete block which maximises stability and acts as a great theft deterrent.

KEY FEATURES:



SILENT
OPERATION



PERIMETER
DETECTION



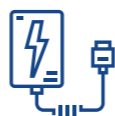
RAPIDLY
DEPLOYED



INCREASES SAFETY
AND SECURITY



SELF
SUSTAINABLE



NO HARD WIRING
REQUIRED

Camera Overview:

- 125W Monocrystalline Solar Panel
- IVS Perimeter Protection
- Sound & Light Alarm
- 32x Optical Zoom
- Starlight Technology
- Remote Monitoring
- Siren and Light Deterrence

900SITE SECURE



Manage your site to keep it secure and intruder-free whilst also being sustainable

900Site Secure manages your site, keeping intruders at bay, leaks and fires under announcement and much more. The whole set is remotely installed and completely solar efficient. With the ability to reach up to 2,000 metres away with some products and even more with others, this kit is perfect for most site locations.

HUB

900Site Secure Hub manages all the devices in the system to alert users about open doors, broken windows, threats of fire and flooding. If break ins occur, it will notify the monitoring station and send photos from the detectors. You won't need to live under the constant supervision of the security cameras to know what's going on.

MOTIONCAM

The 900Site Secure MotionCam is a wireless motion detector for outdoor use with an in-built photo camera. Photos are taken only in case of motion alarm. 900Site Secure MotionCam provides users and security companies with fast and protected visual verification of alarms.

SIREN

900Site Secure Siren is flexible when it comes to settings which makes it as relevant in a quiet gated community as in a loud industrial area. The buzzer can be set to generate sound from 85 to 113 dB for an adjustable period: from 3 seconds to 15 minutes.

LEAK PROTECT

900Site Secure Leak Protect is a wireless addressable flood detection device. Which can protect your home from broken pipe leaks with four pairs of contacts for detecting first signs of flooding, perfect for household places where you can't quite see but know there are possible chances of leaks or other breaches.

KEY FEATURES:



AUTOMATE
SECURITY



RESISTANT
TO SABOTAGE



3 YEARS
BATTERY LIFE



HASSLE FREE
INSTALLATION



VISUAL ALARM
NOTIFICATIONS



SOLAR
POWERED



900SITE SENTRY

Protect people, sites and assets with temporary, fast and secure protection

The 900Site Sentry is the perfect application for all work areas in need of a sturdy device that can be used remotely. Our rapidly-deployable sentry unit is able to be controlled through solar power, utilising the day and working through the night, on alert from any intruders.

The 900Site Sentry is an in-field, rapidly deployed, visual deterrent that houses a chosen selection of 900Site Secure devices, all of which help the armoured husk keep a maintained view from all angles, night or day, once it is placed.

The 900Site Sentry is maintained and managed by our 900Site Secure Hub, this then offers visual verification that instantly assess the situation. Communication with the outside world is critical for the security system control panel. Its reliability and stability guarantee timely alarm transmission to the security company and users. The hub is the main component of the 900Site Sentry as it manages all of the other devices in the system.

The cameras that are used have motion sensors built in, allowing for the system to activate once both sensors are set off. If they are both set off, the camera will take a series of photos and compile them to make a moving image sequence. Photos are transmitted via an encrypted proprietary radio protocol and displayed in the correct set apps or third-party monitoring software.

The final device in the system is placed on the top. The 900Site Secure Siren needs less than a second to activate a powerful siren and bright LED indicators in response to an alarm signal. Any break-in will be immediately exposed. LED indication and short beeps of the buzzer remind users that premises are armed and delay when entering feature is active.

KEY FEATURES:



SOLAR EFFICIENT



WIRE FREE UNIT



RAPIDLY DEPLOYED



REMOTELY CONTROLLED



EASY INSTALLATION



VISUAL DETERRENT



900HYBRID TRAUMA KIT

MPA
HEALTH & SAFETY
AWARDS V
SAFER BY SHARING

The ultimate emergency response equipment for any environment

The 900Hybrid Trauma Kit is designed to combine defibrillator and advanced First Aid equipment. This helps rescuers by giving them essential items required in a major incident - from sudden cardiac arrest to catastrophic bleeds, all treatable from a carry-on rucksack.

This innovative device, equipped with a comprehensive first-aid kit and a defibrillator, stands resilient against even the harshest weather conditions, making it indispensable for remote working environments. Within its compact design, it houses a range of wound care essentials, thoughtfully organised with colour-coded and clearly labelled compartments, ensuring prompt and accurate administration of first aid during critical situations. With these ground-breaking advancements, the 900Hybrid Trauma Kit sets a new standard for the future of emergency medical care, promising swift and effective intervention when every second counts.

CPR ADVISORY

Inside is a Samaritan® PAD which features an audio function, guiding the rescuer through effective CPR with advice on compression pressure and speed based on real-time feedback from the casualty's heart. Unlike other devices, the advice provided takes into account impedance changes of the casualty, prioritising the patient's chances of survival.

OTHER MODULES

The 900Hybrid Trauma Kit device boasts a comprehensive array of features to address diverse medical needs in emergency situations:

- Cuts & Grazes Module
- Burn Module
- Trauma Module
- Eye Module
- Dressing & Bandages Module
- RapidStop® Tourniquet Module

KEY FEATURES:



ONE BUTTON OPERATION



DUST & MOISTURE PROTECTION



USER FRIENDLY



DURABLE CASING



AUTOMATIC SHOCK DELIVERY



ADVANCED TECHNOLOGY

VARIETY OF CHOICE

The 900Hybrid Trauma Kit can be bought in either hard case format or an on-person strapped backpack. Each with the same array of modules and your choice of a HeartSine® Samaritan® PAD 350P, 360P and 500P.



AUDIO CUES

"PUSH FASTER..."

"PUSH HARDER..."

"PUSH SLOWER..."

"GOOD COMPRESSIONS!"



AUDIO & VISUAL COMMANDS

Some functions of the Samaritan® PAD are visual and audio commands which help the rescuer from performing poorly.

VISUAL CUES



900SAFETY STATIONS

Instant protection,
organised and accessible
wherever your site takes
you.

When setting up temporary or fast-moving sites, safety provisions can often fall behind. Ninehundred's 900Safety Hub range provides mobile, comprehensive safety stations that bring critical resources directly to your workforce - perfect for construction sites, rail, civil engineering projects, or event operations.

A fully deployable mobile hub combining first aid, fire, and spill response capabilities. Designed for rapid deployment, it can be set up in under 60 seconds without tools or forklifts.

The 900Safety, First Aid, Fire, and Oil Spill Hubs are all designed for rapid deployment, with durable, weather-resistant construction and clear, colour-coded signage. Each unit is mobile, secure, and easy to relocate, ensuring safety provisions are always in the right place when you need them.

Every hub is built to support real-world site challenges. From pre-stocked medical supplies and dual fire extinguishers to oil-only absorbents and integrated alarms, our hubs provide everything your team needs to respond immediately to incidents. They're customisable, reusable, and designed to keep operations running smoothly while keeping staff and assets protected.

KEY FEATURES:



ON-DEMAND RESPONSE



BUILT-IN ALARM



FULLY STOCKED



CUSTOMISABLE DESIGN



HIGHLY VISIBLE



SECURE STORAGE



900SAFETY HUB

A fully deployable mobile hub combining first aid, fire, and spill response capabilities. Designed for rapid deployment, it can be set up in under 60 seconds without tools or forklifts.

SITE SOLUTIONS

Essential Technology for Modern Site Offices

Ninehundred Communications Group's Site Solutions Division delivers practical, reliable technology for temporary and remote site environments. Designed for locations where standard office systems don't translate easily, our solutions ensure site offices remain connected, productive, and secure from day one.

We specialise in deploying ready-to-use site office technology, enabling teams to work efficiently on-site while maintaining seamless communication with head office, contractors, and stakeholders.

SITE OFFICE EQUIPMENT

We provide a comprehensive range of site-ready equipment to support day-to-day operations, making full use of your existing connectivity to deliver cost-effective, scalable solutions.

Whether you're setting up a short-term project office or a long-running site compound, our equipment supports collaboration, communication, and essential admin functions without unnecessary complexity.

OUR SITE OFFICE EQUIPMENT INCLUDES:

- **Site Laptops** – pre-configured, secure, and ready for immediate use
- **VoIP Desk Phones** – reliable voice communication between site and office
- **Mobile Phones** – flexible communication for site managers and teams
- **Site Printers & MFDs** – printing, scanning, and copying for drawings and documentation
- **Monitors & Screens** – improved visibility for plans, schedules, and reporting

All equipment can be supplied, configured, and supported to ensure rapid deployment and minimal downtime.



KEY FEATURES:



SATELLITE BROADBAND



GUARANTEED TO LAST



SECURE & SAFE



EASILY REPLACEABLE



HIGH QUALITY PRODUCTS



DESIGNED FOR VERSATILITY



STARLINK BROADBAND

All Sites deserve the
best internet coverage
and signal.

Ninehundred now provides Starlink's high-performance business broadband, delivering reliable internet connectivity to even the most remote locations across the UK. Using advanced satellite technology, Starlink ensures events are never limited by coverage or signal availability.

Ideal for temporary and remote construction environments, Starlink provides fast, stable, low-latency broadband where traditional connectivity is limited or unavailable. This supports essential site operations including project management systems, VoIP communications, CCTV and security monitoring, cloud-based reporting, and real-time access to drawings and plans.

Operating independently of local ground networks, Starlink remains reliable on rural, infrastructure, and short-term sites—ensuring consistent, professional-grade connectivity from initial groundworks through to project completion.

COMMON USE CASES:

- Real-time access to project management systems and drawings.
- VoIP and video calling between site teams and head office.
- Connectivity for CCTV, site security, and monitoring systems.
- Temporary site office and welfare unit connectivity.
- Reliable backup connectivity to maintain operations during outages.

GENERAL PERFORMANCE METRICS:

Download Speed	25–220+ Mbps
Upload Speed	5–25+ Mbps
Latency	20–60 ms
Uptime	99%+ (excluding severe weather or maintenance)

KEY FEATURES:



HIGH SPEED
CONNECTIVITY



WORKS
ANYWHERE



LOW
LATENCY



SCALABLE
FOR YOUR NEEDS



RAPID
DEPLOYMENT



CONSISTANT
RELIABILITY



900 MODULAR BUILDINGS

A bespoke, environmental sustainable site solution. Providing engineers, employees and management a comfortable working space

These modules provide a environmental sustainable solution for sites, to accommodate to their needs and provide a functional working space. Every cabin is fitted with office space, toilets, showers, a dry room, kitchen and a meeting room. We offer services such as, water deliveries and effluent collections.

The modular buildings supplied by Ninehundred Communications come in a variety of layouts, with improved workspaces. This meaning that the open planned areas can be either huge or tight and compact whilst also suiting workers needs, by giving them compartments and other features that would help workflow and also boost morale to keep people happy.

Our modular buildings are energy efficient and 'B' energy rated. This allows you to save energy costs and create a more pleasant working environment. The lights are also fitted with PIR (Passive Infra Red) Technology and will save energy costs.

Our cabins are vandalism protected, with gas filled double glazed tilt and turn windows with roller shutters, ensuring protection. Our cabins are also locked tight with multi-locking windows and doors, with guarantee to keep the workers inside safe, whilst also protecting your equipment and other valuable items.

KEY FEATURES:



ENERGY SUFFICIENT



VANDALISM PROTECTION



NOISE REDUCTION MEASURES



TEMPERATURE CONTROL



ENSURING SAFETY



ADAPTS TO THE COMPANY



PPE & SAFETY GEAR

Control your own safety with our personal protection equipment

Ninehundred Communications are committed to providing the very best products that allow our customers to act fast in their forever changing and challenging environments. Our PPE Solutions Division was born, a division ensuring the safety of customers is the priority it should be.

Our company takes pride in providing a versatile range of respiratory equipment, featuring modular systems that cater to the specific needs of end-users and diverse tasks. Our portfolio includes full and half masks, along with air-fed and non-airfed systems, showcasing a commitment to flexibility in design.

The recent addition of plug-and-play Temperature Screening Terminals enhances your product line's comprehensiveness. These terminals offer a rapid setup for monitoring skin-surface temperature and verifying face mask usage. This dual functionality aligns with the current emphasis on health and safety, ensuring a holistic approach to workplace well-being.

By combining these respiratory solutions with advanced temperature screening capabilities, your company stands out in providing a suite of tools to create a safe and healthy work environment.

PELTOR HEADSETS

Suitable for work in Pulp and Paper, Construction, Airport applications and other workplaces where the workers need to be connected to their 2-way handheld or fixed systems throughout the day to help facilitate frequent contacts with co-workers. PELTOR™ headsets will bring hearing protection and communication in noisy environments into a new level of performance with newly designed speakers and microphone. The dual mold cup give a modern and slim look together with bright yellow colour for enhanced visibility.

KEY FEATURES:



PROTECTS AGAINST HARMFUL MATERIALS



HANDFREE COMMUNICATION



WATER TIGHT MICROPHONE



SLIM CUP DESIGN



NOISE CANCELLING



ENHANCED VISIBILITY



3M PELTOR FLX2 HEADSET



3M PELTOR LITECOM HEADSET



900POWER GENERATORS



An easy to operate, safe and reliable power supply, with a long cycle life

Ninehundred's innovative range of battery powered generators. A selection of three portable generators designed to provide reliable and efficient power to areas where it's needed the most. Perfect for both industrial and residential applications.

Engineered for emergency situations, our portable generator is ideal for providing essential power during natural disasters. Its robust design makes it well-suited for use on large or remote construction sites, ensuring seamless operation of power tools and lighting. Perfect for outdoor enthusiasts, the generator powers appliances and lighting for camping trips, making it an essential companion for camp sites and various recreational activities. With a focus on portability and efficiency, this battery generator is the go-to choice for anyone seeking a dependable and convenient power source in challenging and off-grid environments.

Featuring a next-gen LiFep04 battery for unmatched durability, automatic smart lighting modes for efficiency, and a high-efficiency crystalline solar panel for a rapid 8-10 hour charge. With a versatile 3-6 meter install height, 900Power redefines outdoor lighting, blending cutting-edge technology with sustainability for a brighter future.

KEY FEATURES:



QUICK SET
IN AN EMERGENCY



EASY TO
TRANSPORT



LCD BATTERY
STATUS INDICATOR



RELIABLE PURE
SINE WAVE OUTPUT



ROBUST
PROTECTIVE CASES



MULTIPLE
OUTLET VOLTAGES

ALL GENERATOR OUTPUTS:

CONTINUOUS
500W
800W
PEAK

CONTINUOUS
800W
1600W
PEAK

CONTINUOUS
1600W
3600W
PEAK



RATED
3600W
5000W
PEAK

RATED
5000W
7000W
PEAK

TELEMATICS SOLUTIONS

Options for permanent hard-wired devices or temporary plug & play self installation devices depending on your requirements

Our Telematics Solutions Division provides a tracking solution tailored for all sectors and fleet sizes, covering basic GPS tracking to comprehensive fleet management. It combines in-depth data capture and state-of-the-art hardware, with a particular focus on advanced telematics.

We deliver fully integrated systems including vehicle tracking, high-definition cameras, Live DVR, asset and plant monitoring, immobilisation and compliance support. By consolidating GPS data, driver behaviour analysis, vehicle health insights and real-time video, we provide complete operational visibility through a single, intuitive platform.

Solutions are available as temporary plug-and-play installations or permanent hard-wired systems, depending on operational requirements. From Direct Vision Standard (DVS) compliance and cold chain control to theft prevention and remote monitoring, our technology is designed to enhance safety, reduce risk and protect valuable assets.

Supported by over 45 years of industry experience and delivered by fully accredited engineers, our Telematics Division works collaboratively with customers to design, install and maintain scalable systems. The result is improved efficiency, strengthened security and data-led decision-making across every fleet operation.

KEY FEATURES:



LIVE GPS TRACKING



PLANT TRACKING



VEHICLE CHECK



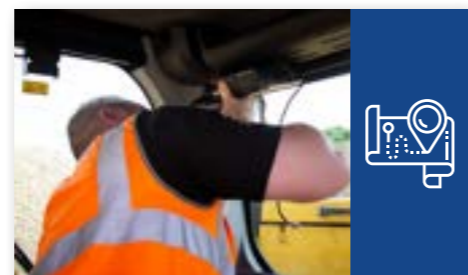
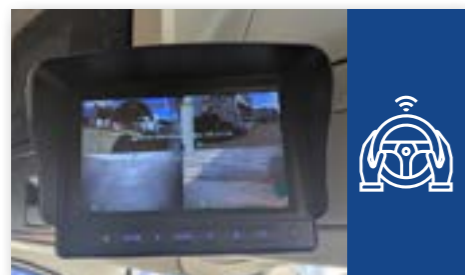
DASHBOARD CAMERAS



DRIVER BEHAVIOUR



VEHICLE SAFETY REPORT



COMMUNICATE ANYTIME, ANYWHERE



Ninehundred
Communications
Group



For more information &
to view our accreditations,
Scan here!



Keep up to date with our latest news!



0845 600 4 900

www.ninehundred.co.uk
sales@ninehundred.co.uk

White Rose Way | Doncaster Carr | Doncaster | DN4 5JH

Ninehundred Communications Group does not accept any liability. All specifications are subject to change without notice.

Ninehundred Communications Group holds accreditations and memberships, typically, by way of annual external auditing to provide you with peace of mind that you are dealing with a company who is continually striving to improve performance.