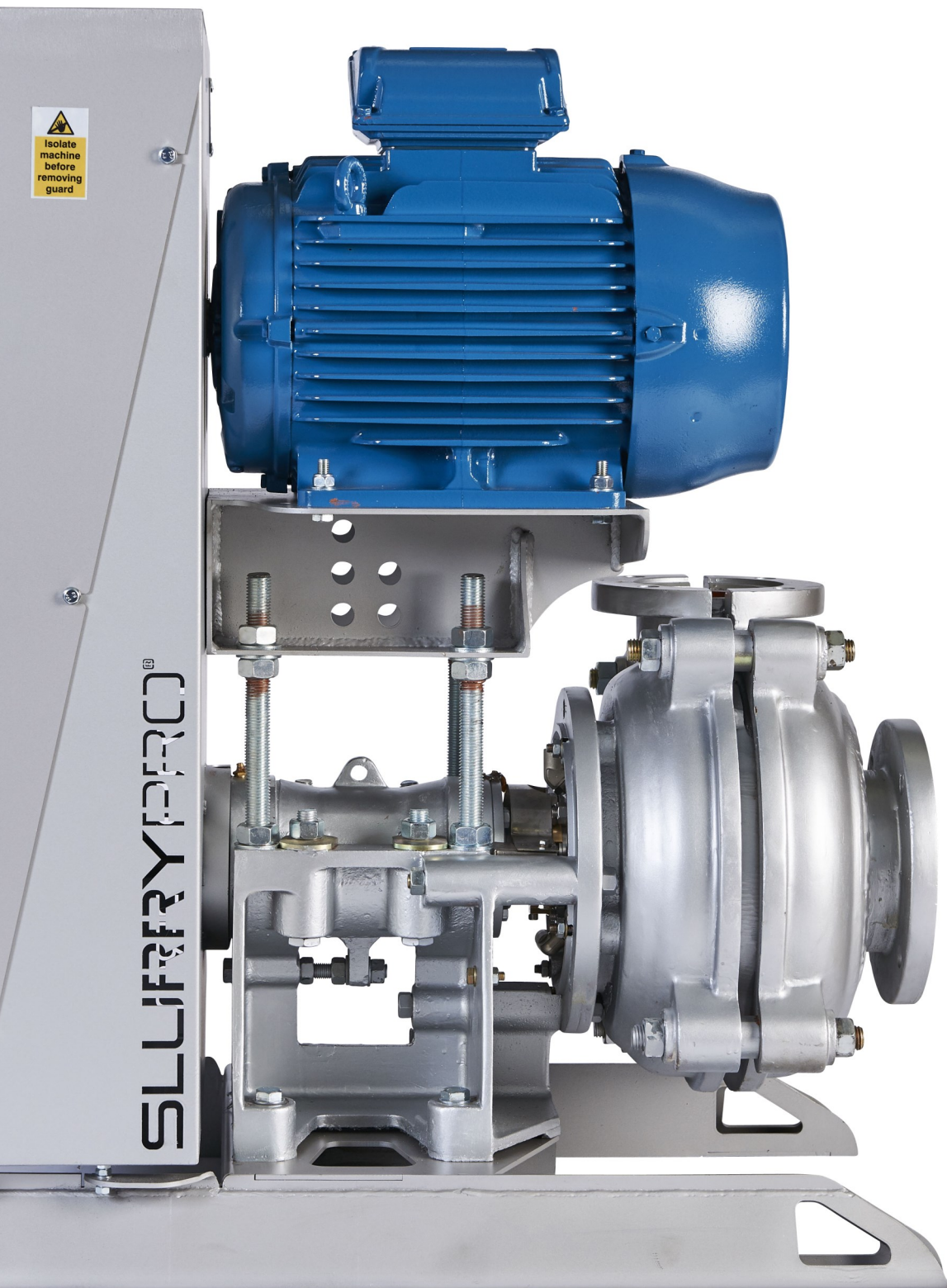


SLURRYPRO[®]

A BETTER SLURRY PUMP EXPERIENCE



SLURRYPRO[®]

A BETTER SLURRY PUMP EXPERIENCE



T: +44 (0)1246 284 420 E: hello@atlantic-pumps.com W: atlanticpumps.co.uk



SLURRYPRO®

SlurryPro originated from a firm belief that your slurry pump experience could and should be better

In response to industry feedback and frustration with service and response times, SlurryPro has introduced a customer-centric focus and revolutionised the end user experience.

The core management team bring years of experience from the Australian and South American mining industry. This tough and unforgiving environment was the perfect birth place for a range of pumps focusing on superior wear life and reduced lifetime costs. We focus on the vital need to reduce downtime in our key markets of mining, chemicals and mineral processing.

Our range includes horizontal and vertical centrifugal slurry pumps, all designed for use in the heaviest duty applications such as mill discharge, process plant and tailings applications. They are also widely used in sand washing and recycling applications, as well as specialist areas such as difficult food washing and other abrasive processes.

We understand that reducing downtime relies on rapid and cost effective parts availability. With this in mind, we have invested heavily in stock within our distribution companies, leading to the fastest quoting and delivery times in the industry.

In short, if you're looking for a better slurry pump experience, including superior wear life, reduced lifetime cost and ease of ongoing maintenance there is quite simply no alternative to SlurryPro.

Silver Series

Upgrade with interchangeable technology

The SlurryPro Silver Series is a heavy duty, proven range of horizontal and vertical slurry pumps in a wide range of sizes, available with both high chrome and different grades of rubber wearing parts. The SlurryPro Silver Series pump and spares range allows you to continue using your current pump and pipe work configuration.

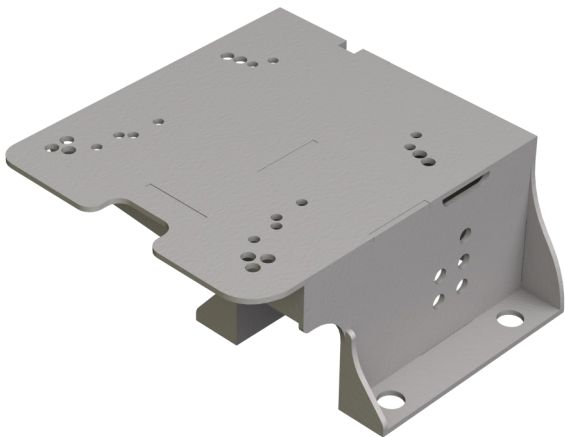
A BETTER SLURRY PUMP EXPERIENCE

SlurryPro's passion for improving wear life and customer experience is greatly demonstrated in the design of the new built-up SlurryPro pumps.

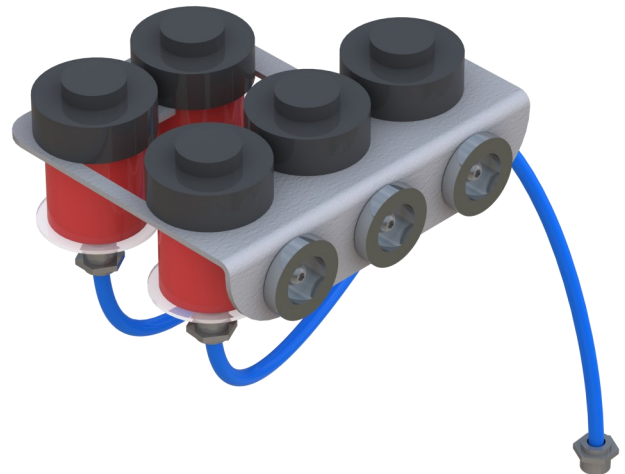
Design improvements and increased safety features have been at the forefront of our engineers' thinking. The new build-up is lighter than the previous version yet just as robust and with no change to the overall integrity of the base. This weight improved model has been achieved by a change in the construction principles used.

The introduction of modular design and the improvements in the way SlurryPro is designed and manufactured means that assembly time is also greatly reduced, thus reducing lead time. While bespoke designs can take time, we also now have a library of designs in place which allows us to begin manufacturing a new build-up quicker than ever before.

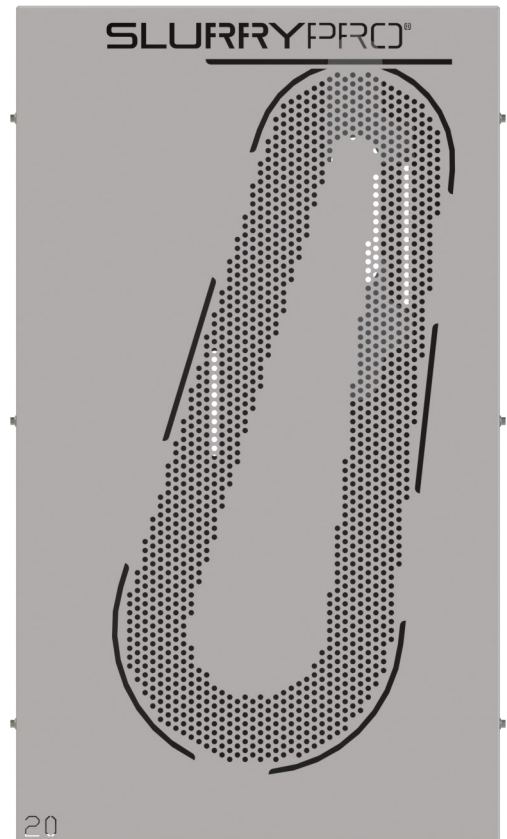
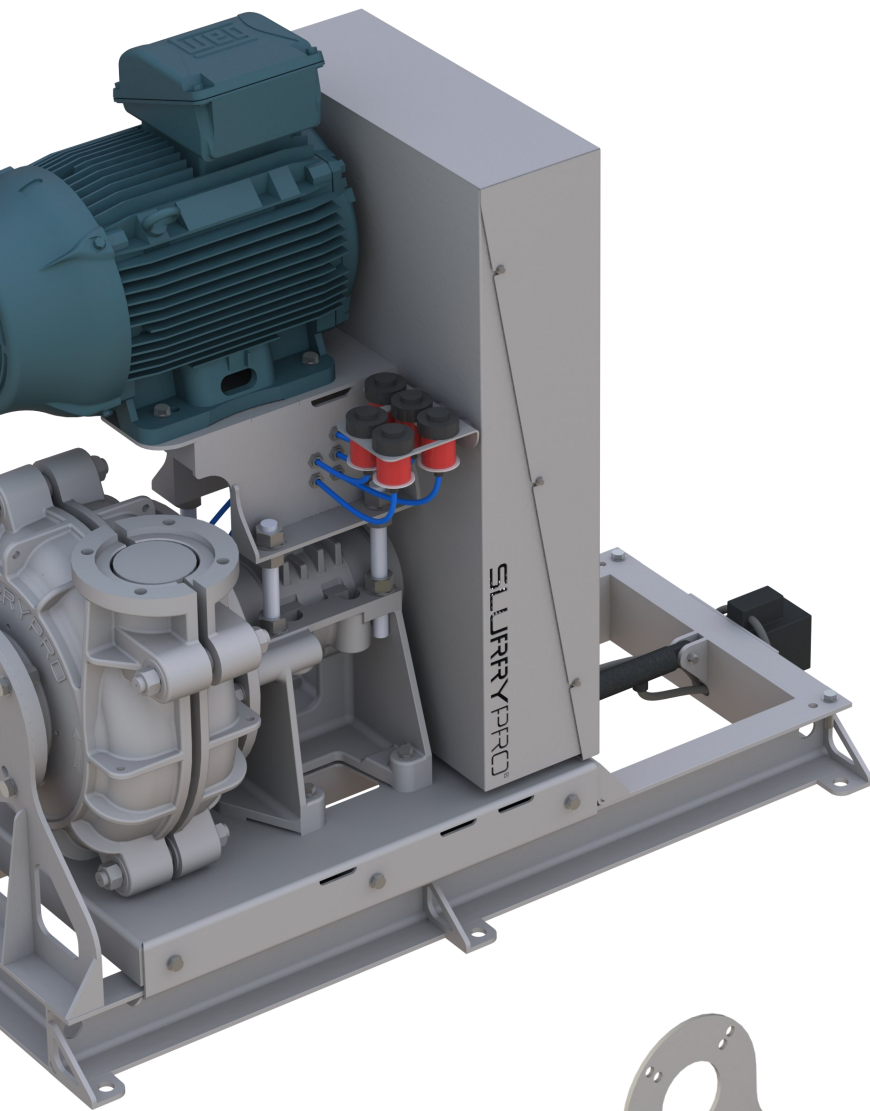
Find out more about the key features of the built-up SlurryPro over the page.



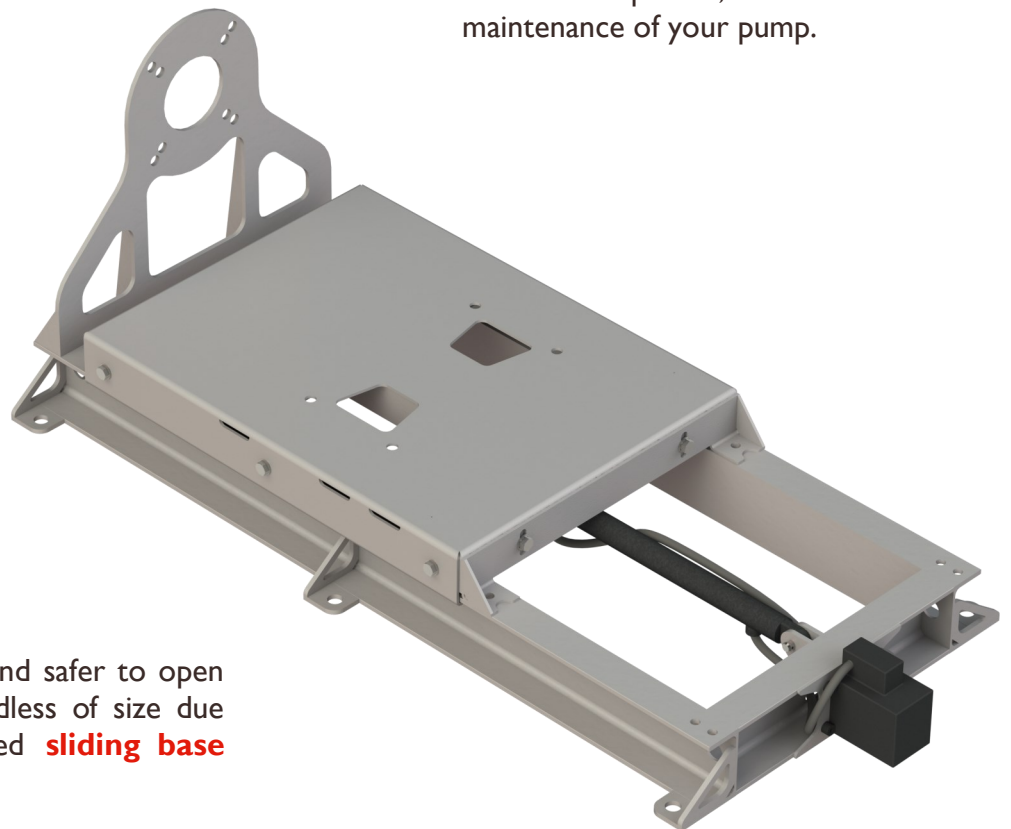
The **universal motor mount** has been designed to accommodate many motor sizes.



The introduction of **automatic greasers** guarantees regular lubrication of your pump and therefore reduces downtime. Further benefits include extended asset life and improved health and safety.



A lightweight perforated **belt guard** allows for quicker, easier and safer maintenance of your pump.



It's now even quicker and safer to open and close pumps regardless of size due to the award-nominated **sliding base with hydraulic ram**



SlurryPro Automatic Greaser

Did you know that one of the most common reasons for pump failure is lack of regular lubrication?

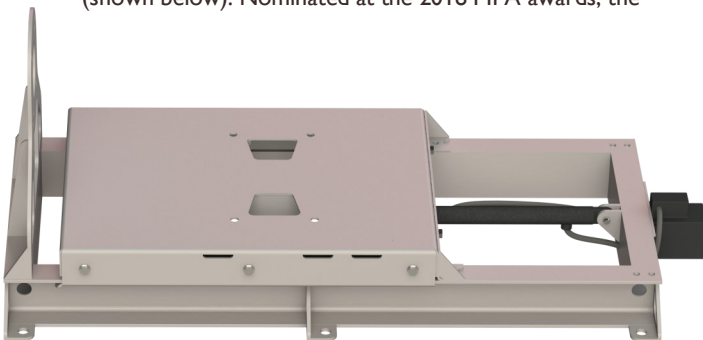
All new SlurryPro built-up pumps include provision for an automatic greasing system as standard. Once fitted, this ensures consistent reliable lubrication of the bearings and seals for maximum service life. Manual greasing leads to both over and under greasing due to inconsistent or infrequent application. Over greasing leads to overheating, waste, pollution and premature

failure. Under greasing leads to wear, premature repairs and high replacement costs.

SlurryPro Automatic Greaser pots are available individually and as part of a kit. The kit includes a bracket which can hold up to five pots of grease. Thanks to the bracket's powerful magnetism fitting it to the pump is a quick and simple procedure with no requirement for screws or tools.

Static & Sliding Bases (with Hydraulic Ram)

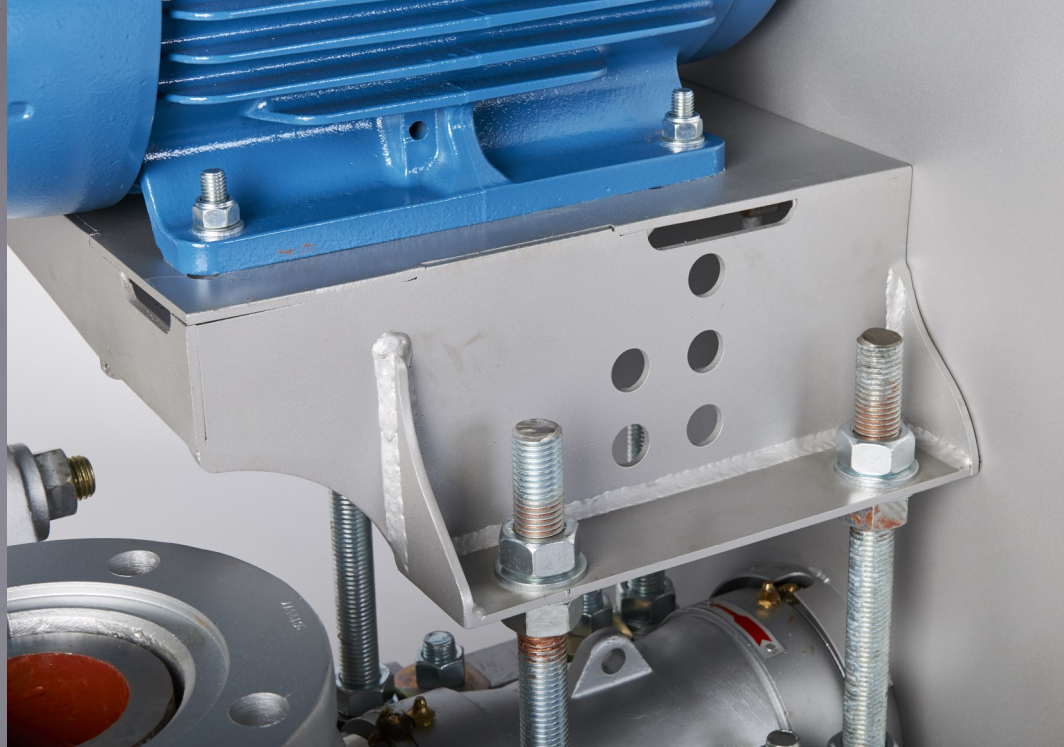
While our new built-up SlurryPro pumps come with a static base, there is also the option to upgrade to a sliding base (shown below). Nominated at the 2018 MPA awards, the



sliding base has been further improved by the inclusion of a hydraulic ram meaning we can now fit the sliding base to larger pump sizes.

The introduction of hydraulic ram also means it's now even easier and safer to open and close pumps regardless of size. The pump can slide open and be closed by just one person, and the need for lifting equipment is reduced. Significant savings can be made to the costs and time associated with servicing and maintenance.

If you have multiple SlurryPro pumps on your site, these can all be made suitable for using the hydraulic ram, but as it is moveable you do not necessarily need to buy a ram for each pump.



Universal Motor Mount



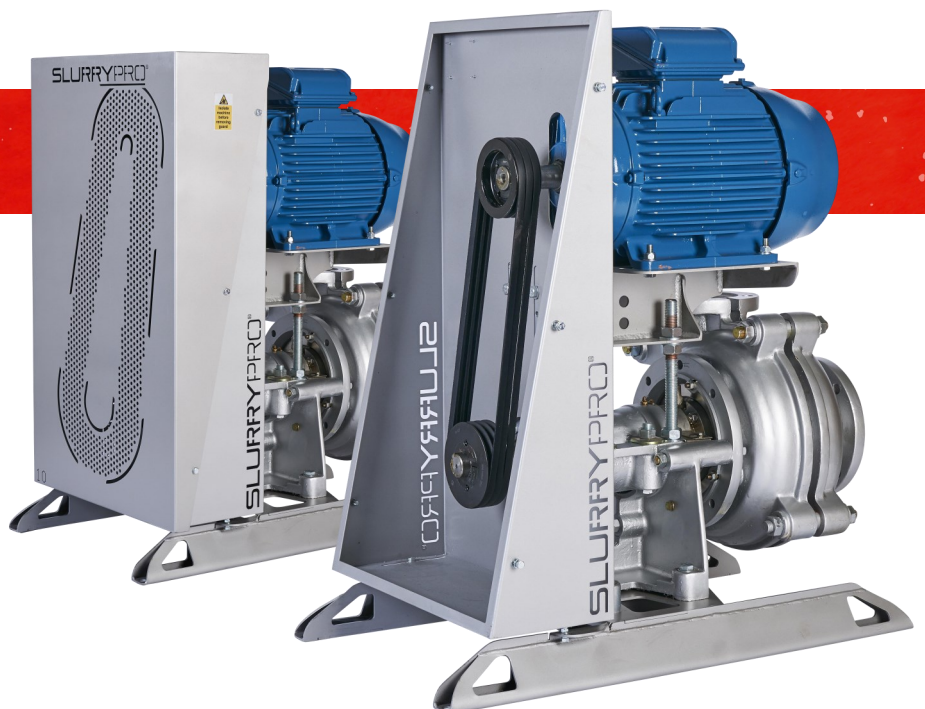
Our new motor mount has been designed to accommodate many motor sizes, which means a different sized motor can be put on the pump without any further engineering. This also speeds up the manufacturing process as pumps can be prepared in advance of confirmation of the final specification. It also allows for a motor swap-out or upgrade at any time, with minimal disruption.

Belt Guard

The health and safety of the user is always at the forefront of our thinking.

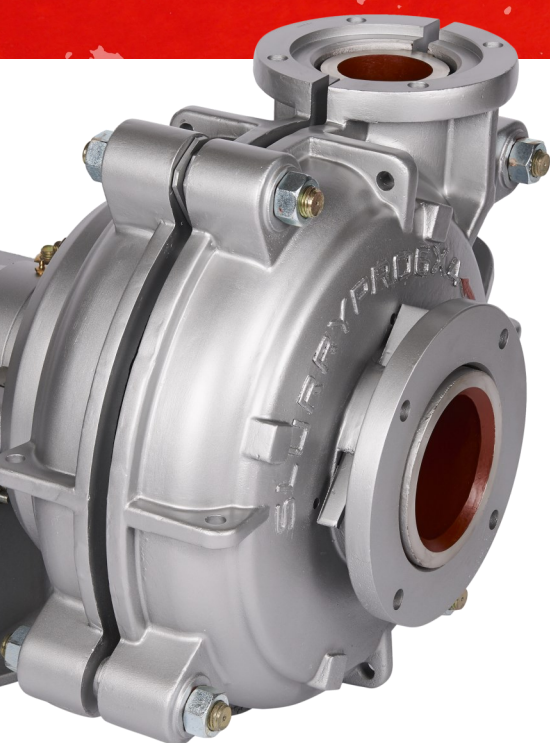
The new upgraded design includes an increased number of features such as the perforated belt guard. This can be removed by simply loosening six bolts and lifting the guard off allowing the user quick and easy access.

The build is also fully compliant with guarding regulations.





Horizontal Silver Series

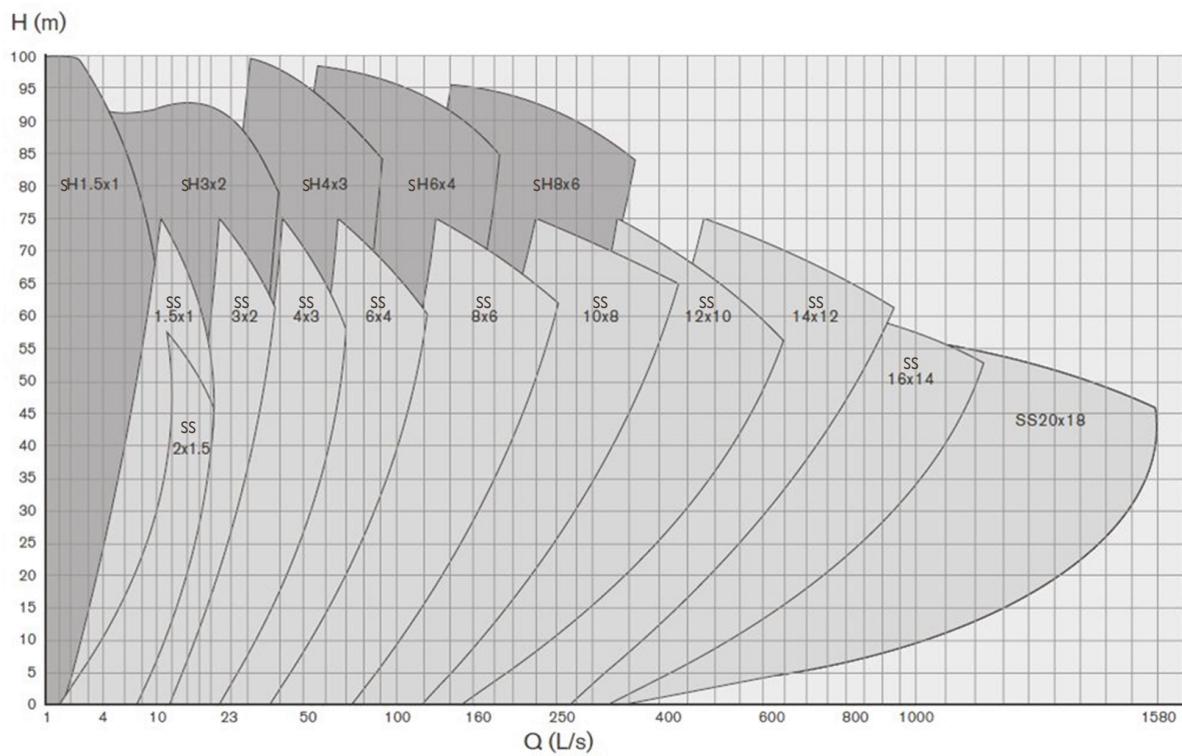


Key Points

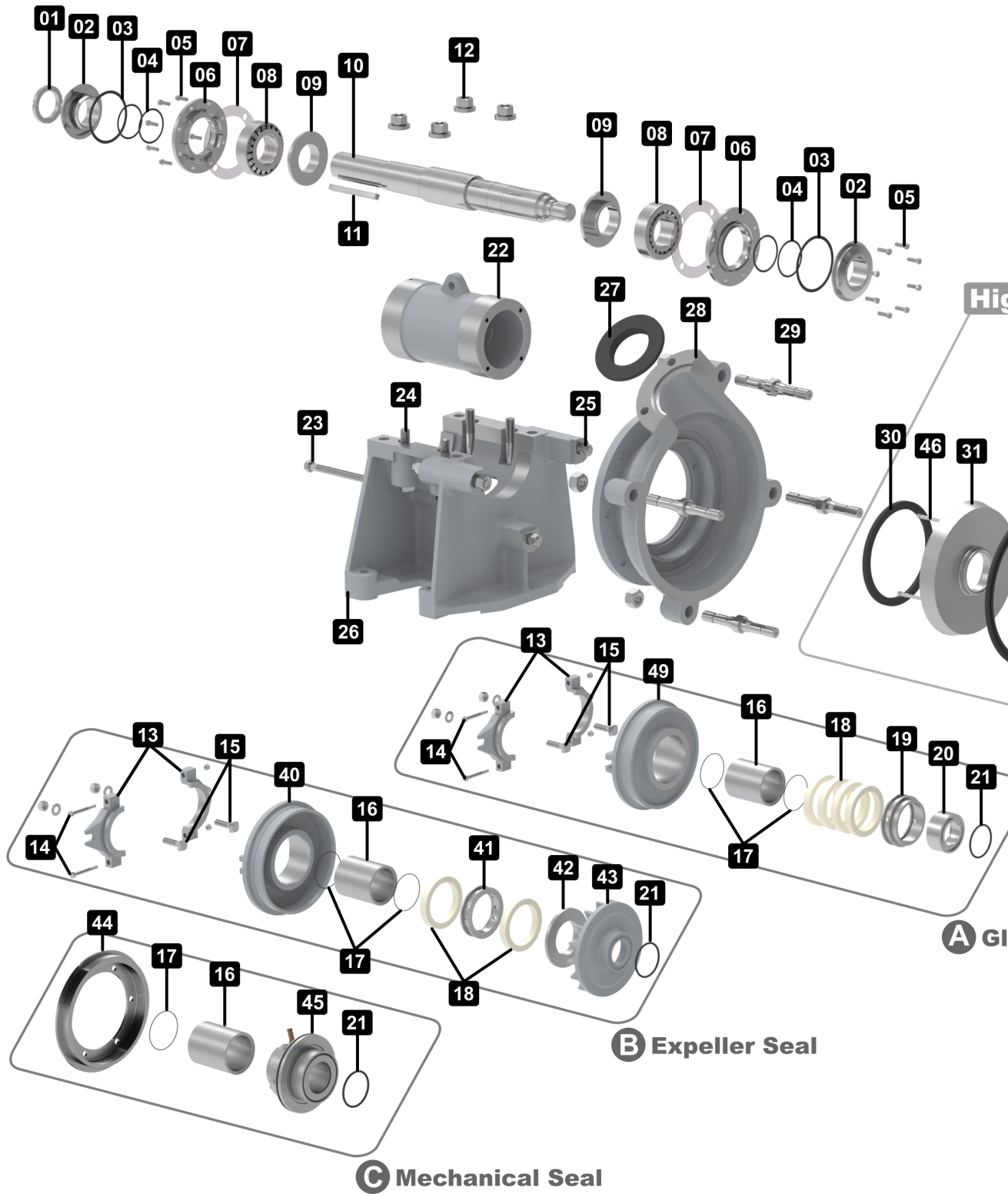
- A complete range of sizes are available across the full selection of pump types and materials.
- Components come in a range of elastomer and hard metal types and materials to suit any application, for maximum abrasion and corrosion resistance.
- The removable cartridge-type bearing assembly facilitates easy on-site maintenance procedures.
- A range of seal types are available to suit every requirement, including mechanical shaft seals to reduce gland sealing water leakage.
- The pump's RPM and torque specification is matched to the application and achieved via the belt pulley system configuration.

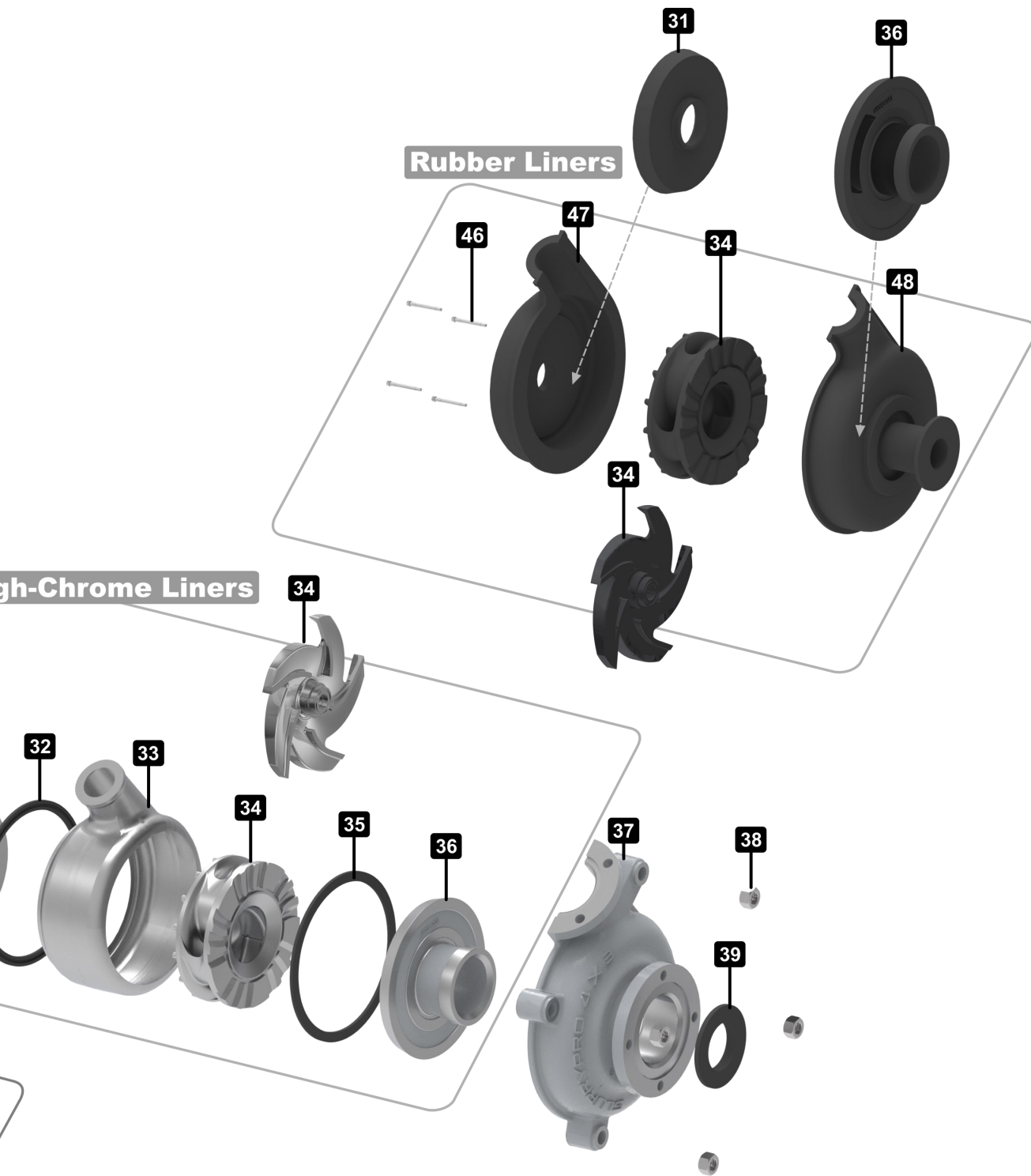
Pump Curves

The selection chart on page 9 should be used as a basic guide only. This chart indicates the range and quantity of flow available from pumps with standard impellers. It can also, however, be used to obtain a preliminary pump selection providing the user is able to estimate the quantity of slurry to be pumped and the developed head required.



Horizontal Blow Apart Diagram





and Packing Seal

- | | | | | |
|-------------------------|-------------------------|--|-----------------------------------|-----------------------|
| 01. Labyrinth Lock Nut | 13. Gland Assembly | 25. Frame Plate Stud | 35. Volute Seal | 46. FPL Insert Stud |
| 02. Labyrinth | 14. Gland Clamp Bolt | 26. Base | 36. Throatbush | 47. Frame Plate Liner |
| 03. Bearing Seal | 15. Gland Bolt | 27. Discharge Joint | 37. Cover Plate | 48. Cover Plate Liner |
| 04. Piston Ring | 16. Shaft Sleeve | 28. Frame Plate | 38. Cover Plate Nut | 49. Stuffing Box |
| 05. End Cover Set Screw | 17. Shaft Sleeve O-ring | 29. Cover Plate Bolt | 39. Intake Joint | |
| 06. End Cover | 18. Gland Packing | 30. Stuffing Box /
Expeller Ring Seal | 40. Expeller Ring | |
| 07. Shim Set | 19. Lantern Restrictor | 31. Frame Plate Liner
Insert | 41. Lantern Ring | |
| 08. Bearing | 20. Shaft Spacer | 32. Volute Seal | 42. Neck Ring | |
| 09. Grease Retainer | 21. Impeller O-ring | 33. Volute Liner | 43. Expeller | |
| 10. Shaft | 22. Bearing Housing | 34. Impeller | 44. Mechanical Seal Back
Plate | |
| 11. Shaft Key | 23. Adjusting Screw | | 45. Mechanical Seal | |
| 12. Clamp Nut | 24. Clamp Bolt | | | |



Vertical Silver Series

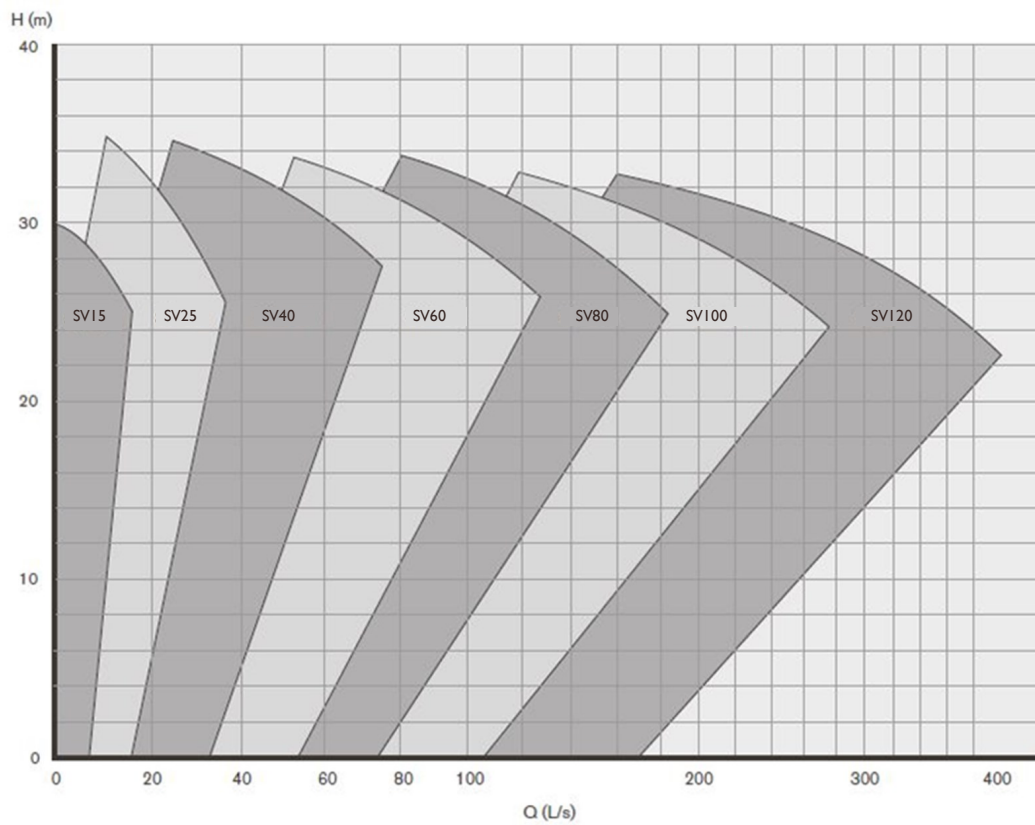


Key Points

- This heavy duty range features a cantilever shaft design that eliminates any bearings or seals in the fluid end.
- An ideal pump for heavy slurry wash down and spill duties.
- A full range of material options including complete elastomer lined pumps and hard metal options for corrosive and abrasive media duties.
- Pumps in all sizes can be configured with a range of column lengths and impeller designs.
- They are ideal for coarse particles and high concentrations of slag pulp and are widely used in the quarrying, mining and recycling industries.

Pump Curves

The selection chart opposite should be used as a basic guide only. This chart indicates the range and quantity of flow available from pumps with standard impellers. It can also be used to obtain a preliminary pump selection providing the user is able to estimate the quantity of slurry to be pumped and the developed head required.



SlurryPro Mechanical Seals

Mechanical Seals are the most effective sealing arrangements for slurry pumps

A mechanical seal consists of two parts, one section is fixed to the shaft, the other fixed to the stationary pump housing. The interface of these two components is the mechanical seal. One of the sections will be fixed in place, while the other will be pushed up to it using a spring-loaded fixing. This allows a tiny amount of liquid, called the fluid film, into the minuscule space between these two surfaces. This film creates a seal whilst also providing the necessary lubrication and cooling.

This liquid between the two faces of the seal can either come from the fluid being pumped or from an external source. There will be some leakage into the dry area of the pump, but as the gap is so small (as narrow as one micron) this will be virtually undetectable.

SlurryPro Mechanical Seals

SlurryPro Mechanical Seals are available as both single and double seals and are designed to meet the arduous requirements of slurry applications. Large radial clearances and advanced multi-spring design give improved seal face loading and longer seal life. They are supplied as a complete cartridge to ensure they are delivered in pristine condition.

SlurryPro Mechanical Seals are precisely made to tight tolerances by a global leader in mechanical seal development. A pump designed and built for your industry, fitted with a mechanical seal made by a trusted global leader of specialist seals; a winning combination for the ultimate confidence!



Advantages of using mechanical seals

- Cost savings from the reduction in wear to pump parts
- A reduction in down-time because repairs and parts are needed less often
- A reduction in the liquid needed for cooling
- The prevention of any discernible leakage of the pumped liquid

The main disadvantage of mechanical seals is their much higher purchase price. However, this is offset by lower running costs and the elimination of any costs associated with leakage. Slurry pumps can be supplied with mechanical seals fitted during the build stage, or they can easily be retro-fitted to existing pumps.



CEMEX Angerstein Wharf, London



Slurry pumps are mostly large and notoriously difficult when it comes to undertaking maintenance and repair. It is a task that usually requires more than one person, the use of lifting aids and one that poses the danger of possible injury to those undertaking the operation.

The SlurryPro Sliding Base allows a site to undertake safer and easier inspection and maintenance of a centrifugal slurry pump.

An ideal solution for where space is limited, the base greatly reduces the need for much manual handling thus reducing health and safety concerns. Additionally the SlurryPro Sliding Base helps reduce site downtime and increase the amount of saleable output produced by a site.

One site that has benefitted from the installation of a SlurryPro Sliding Base is Angerstein Wharf near London, which is operated by the CEMEX company.

Although Angerstein Wharf has an impressive safety record, the site installed the base to reduce the risk of accidents on site. As the site strives for zero harm policy, the base reduces the amount of manual handling for CEMEX employees thus reducing the risk of accidents and Musculoskeletal Disorders (MSDs), which impact on so many people's lives both in and outside of work.

MSDs are the most commonly reported cause of occupational ill health in the UK. A third of all work related sickness/absence reported to the HSE is due to MSDs – with over ½ million workers reported to have suffered during 2016/17.

Angerstein have been using a SlurryPro Sliding Base in conjunction with their Warman 6x4 slurry pump since mid-2017 and the addition of the base has been a revelation.

In the case of CEMEX Angerstein Wharf, the mains water pump used to take one day to strip, replace and rebuild. The process contained high risk manual handling of the heavy pump casing and a full day's downtime. Using the SlurryPro Sliding Base instead of a fixed base has eliminated high risk manual handling and reduced downtime by 50%.

This reduction in downtime is due to only having to unbolt the four casing bolts to slide the wet end and motor apart to expose wear parts. The suction pipe doesn't need to be removed and replaced and the pump casings stay connected to the frame eliminating high risk manual handling and therefore reducing the risk of hand injuries.

A lot of health and safety products mean more expense for a site, however the SlurryPro Sliding Base is a health and safety feature that also optimises production, with considerable savings. By reducing the downtime by half, the plant can produce nearly £30,000 more of saleable material.

“ Using the SlurryPro Sliding Base instead of a fixed base has eliminated high risk manual handling and reduced downtime by 50%.

Viridor Recycling & Renewable Energy Centre



The Viridor Recycling & Renewable Energy Centre in Glasgow is a flag-ship AD plant. This £154m site had four rotatory lobe pumps handling the food waste produced by this large conurbation. The suitability of the pumps to the application and reasonable purchase price made them attractive to the site operators.

However, one aspect of these pumps became a major disadvantage. The digestate is very gritty and therefore an abrasive material to transport. This meant the internal lobes and casing eroded rapidly, which led to a rapid reduction in efficiency. This meant the lobes had to be replaced regularly, and as these are very expensive, this became a major headache for the site operators.

The reduction in efficiency meant that the promised energy saving did not materialise. Additionally, the pumps, which are essential to the running of the plant, were out of action during the replacement process. This led to significant downtime for the plant, and all the costs and lost production this brings. As you can see, the attractiveness of apparent high efficiency and reasonable purchase price had now been eclipsed by unreasonable operating costs and downtime.

The site contacted Atlantic Pumps, specialists in pumps for abrasive applications. Atlantic recommended SlurryPro centrifugal slurry pumps.

Right: how improved running costs can outweigh the higher purchase price and the apparently lower efficiencies of a centrifugal slurry pump.

These have a higher initial purchase price and cannot offer such high efficiencies as the lobe pumps theoretically can. However, by specifying pumps with high-chrome wear parts, an open 2-vane impeller and a double mechanical seal, Atlantic were able to produce a solution where the pumps can happily handle the abrasive fluids for long periods of time with very little erosion to the working parts of the pump.

The site now has four 6x4 SlurryPro pumps installed in replacement to the lobe pumps. After many months of constant operation, the pumps are still happily providing the required adequate pressure and flow. More importantly, the internal wear parts are still in good condition. This means there has been a dramatic reduction in both downtime and in the cost of spares. In fact, the investment in these new pumps has already paid for itself.

Having reliable pumps working constantly has improved the running of the whole plant; for example, the pipes no longer seize up like they used to do when the pumps needed switching off regularly. See below how improved running costs can outweigh the higher purchase price and the apparently lower efficiencies of a centrifugal slurry pump:

	Lobe Pump	Centrifugal Slurry Pump
Initial purchase price	£22,000	£33,000
Energy costs (per year) - rated	£32,500	£65,000
Energy costs (per year) - actual	£65,000	£65,000
Spare parts (per year)	£55,000	£5,500
Cost of downtime (£1,000/day)	£22,000	£2,200
Total pumping costs first year	£154,000	£95,700
Total pumping costs subsequent years	£132,000	£62,700

Cymru Industrial Supplies Ltd (for Tata Steel)



Cymru Industrial Supplies Ltd are one of the pump suppliers to Tata Steel at Port Talbot. Tata is Europe's second largest steel producer, with steelmaking in the UK and Netherlands, and manufacturing plants across Europe.

When a pump failed on the Port Talbot site at the start of November, Cymru contacted the original pump manufacturer who quoted a lead time of ten weeks. Cymru needed to source a replacement pump that day and have it operational quickly, to avoid costly issues (calculated at over £200,000) related to the pumping of dirty slurry in the manufacturing process.

Cymru Industrial Supplies found Atlantic Pumps online. They had seen from our website that we stocked new and refurbished pumps; a conversation with our sales team led them to become interested in - and go on to purchase - a new SlurryPro 4x3 slurry pump.

The order was placed in the morning and the pump was delivered to the Port Talbot site the very same day from our large, well-stocked, central UK warehouse. The pump arrived on time at 2 o'clock and was being installed by 3 o'clock. Cymru Industrial Supplies were very satisfied with Atlantic's involvement and have since gone on to purchase a backup SlurryPro 4x3 from us.

This wasn't the first time Atlantic Pumps have been called upon to supply a suitable pump to a site at very short notice; it's something our knowledgeable, trained staff handle comfortably on a regular basis.

“

When downtime can cost into the tens of thousands of pounds an hour and fines can potentially cost hundreds of thousands of pounds, having a supplier who stocks and supplies pumps and parts on very short lead times is a necessity to all. This, combined with our ability to supply quotes within the hour and our desire to help clients save money are just some of the reasons many are now turning to Atlantic Pumps as their chosen pump supplier.

Atlantic Pumps Sales Representative

SlurryPro Pumps Chosen for CEMEX UK Dredger



A new multi-million pound marine aggregates dredger has been launched which features two built-up SlurryPro 6x4 centrifugal pumps.

The CEMEX UK marine dredger called 'CEMEX Go Innovation', was built by the Dutch defence, shipbuilding, and engineering conglomerate Damen Shipyards Group and was delivered in the summer of 2019.

The vessel is the first in the next generation of environmentally designed dredgers and is designed to extract sand and gravel from the seabed up to depths of 55 metres, including in the challenging conditions experienced in the North Sea.

An agreement for the pumps to be included on the dredger was struck thanks to a pre-existing partnership between the Dutch company Bakker and Co. and Atlantic Pumps who manufacturer SlurryPro.

Talking about the inclusion of the pumps on the Dredger, Atlantic Pumps Managing Director Andrew Smith said "As CEMEX's key pump partner in the UK it is fantastic to have been able to be part of one their largest investments of recent years. It is a demonstration of the benefits of our global reach and being able to support their ongoing needs – ensuring minimal downtime with our rapid spares backup".

SlurryPro pumps can be found on a number of dredgers in the UK including the Southampton-based vessel 'Clarissa' which is owned by Aggregate Industries and on a vessel owned by CEMEX UK Marine - also based in Southampton.

“

Damen were particularly taken with the wear life achieved by SlurryPro pumps and the fact that Atlantic Pumps are the preferred pump supplier to CEMEX in the UK.

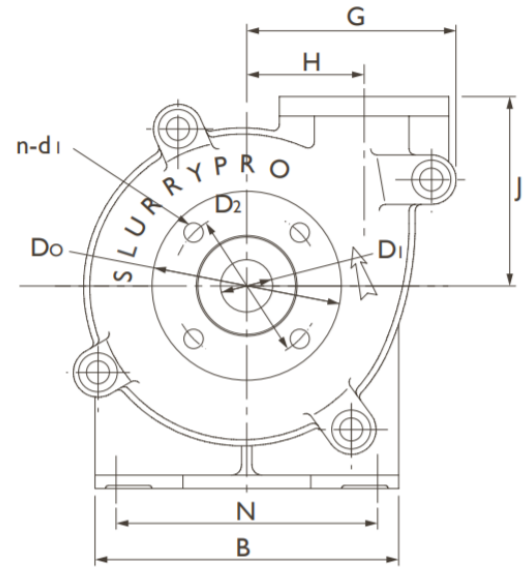
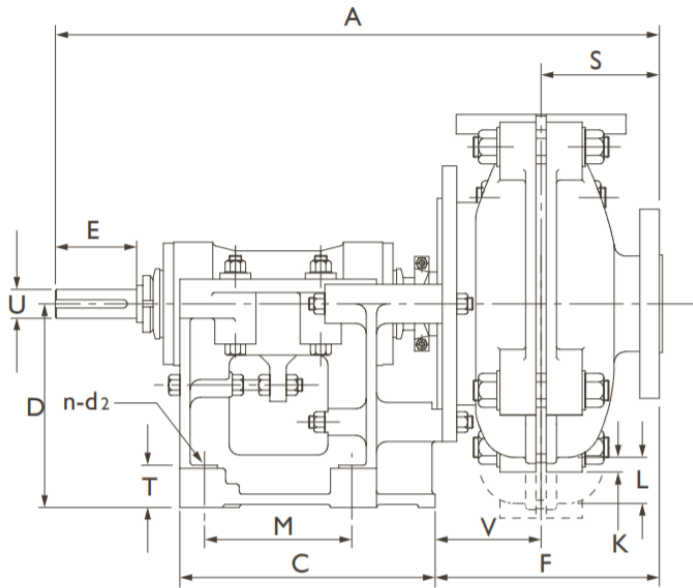
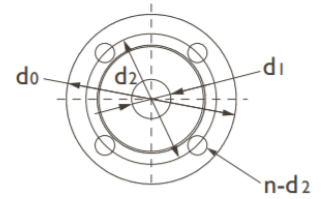
Previous experience of supplying pumps to dredgers in the same application in the UK also allowed us to guide Damen in their choosing of the pumps.

Atlantic Pumps Sales Representative

Dimensions

Tolerances

Dimensional: ± 5 mm
 Between axes: ± 4 mm
 Between axes in Holes: ± 1 mm



Type	Frame	A	B	C	D	U	E	F	G	H	J	K	L	M
SS1x1.5	05	583	295	248	197	28	79	206	181	98	171	46	—	143
SS2x1.5	05	592	295	248	197	28	79	217	205	114	184	33	—	143
SS3x2	10	768	406	311	254	42	121	281	238	138	210	71	—	175
SS4x3	10	843	406	311	254	42	121	354	292	149	262	24	—	175
SS4x3	20	943	492	364	330	65	164	353	292	149	262	100	—	213
SS6x4	20	1021	492	364	330	65	164	421	406	229	338	11	—	213
SS6x4	30	1178	622	448	457	80	222	433	406	229	338	138	—	257
SS8x6	30	1302	622	448	457	80	222	557	551	318	460	—	62	257
SS8x6	45	1507	857	635	610	100	279	539	551	318	460	90	—	—
SL10x8	30	1337	662	448	457	80	222	585	613	381	470	—	83	257
SL12x10	45	1546	857	635	610	100	279	—	696	438	470	—	—	349

Type	N	V	T	S	n-d	Suction Flange				Discharge Flange				Pump Weight (kg)	
						D0	D1	D2	n-d1	d0	d1	d2	n-d2	Metal	Rubber
SS1x1.5	254	181	38	106	4- ϕ 14	152	38	114	4- ϕ 16	165	25	127	4- ϕ 16	87	77
SS2x1.5	254	184	38	114	4- ϕ 14	184	51	146	4- ϕ 19	165	38	127	4- ϕ 19	157	118
SS3x2	356	233	48	151	4- ϕ 19	216	76	178	4- ϕ 19	184	51	146	4- ϕ 19	198	154
SS4x3	356	270	48	187	4- ϕ 19	279	102	235	4- ϕ 22	229	76	191	4- ϕ 22	250	236
SS4x3	432	279	64	187	4- ϕ 22	279	102	235	4- ϕ 22	229	76	191	4- ϕ 22	318	290
SS6x4	432	318	64	219	4- ϕ 22	337	152	292	8- ϕ 22	279	102	235	8- ϕ 22	670	454
SS6x4	546	351	76	219	4- ϕ 29	337	152	292	4- ϕ 22	279	102	235	4- ϕ 22	886	635
SS8x6	546	402	76	292	4- ϕ 29	406	203	356	8- ϕ 22	368	152	324	8- ϕ 21	1500	984
SS8x6	—	247	—	292	4- ϕ 29	406	203	356	8- ϕ 22	368	152	324	8- ϕ 21	1818	1393
SL10x8	546	—	76	54	4- ϕ 29	502	254	445	8- ϕ 29	432	203	375	8- ϕ 29	1625	1202
SL12x10	762	—	—	330	4- ϕ 29	555	305	495	8- ϕ 32	487	254	424	8- ϕ 32	2600	1950

SLURRYPRO[®]

A BETTER SLURRY PUMP EXPERIENCE

T: +44 (0)1246 284 420 **E:** hello@atlantic-pumps.com **W:** atlanticpumps.co.uk

Copyright © 2026 Atlantic Pumps Limited. All rights reserved.
Atlantic Pumps Ltd is registered in England. Company Number: 09400148. VAT Number: 249459267.
Registered Office: Atlantic Pumps, Carrwood Road, Chesterfield, Derbyshire, United Kingdom, S41 9QB.