

# KT Series

## Poppet Solenoid Valves

### Wide range

The KT\* are 2-port pilot operated poppet valve, actuated by solenoid. They are available in three nominal sizes, normally closed version (NC) or normally open version (NO) in standard configuration (S), reverse flow (R) or double seal (D), with nominal flow rate up to 150 l/min. Manual override is available.

### Main Technical Features

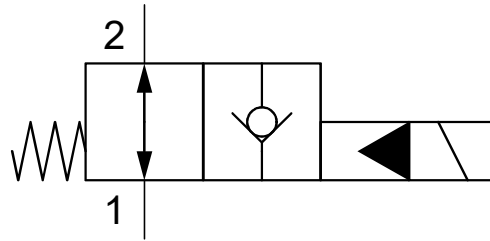
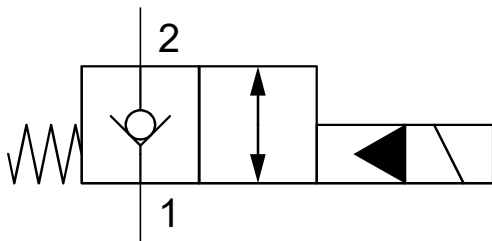
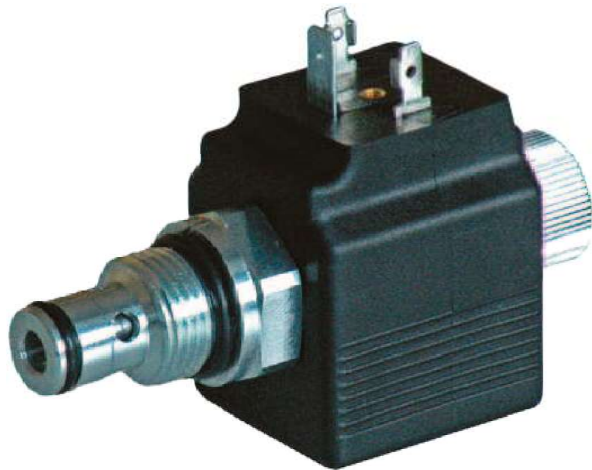
Max Flow **150 L/min**

Max operating pressure **350 bar**

KT08 max 350 bar

KT10 max 350 bar

KT12 max 350 bar



### SAE UNF CAVITIES

3/4-16 UNF (40 L/min)

7/8-14 UNF (80 L/min)

1-1/16 - 12 UN (150 L/min)

**HYDRECO**  
a member of **DAIKIN** group



Scan the QR Code