

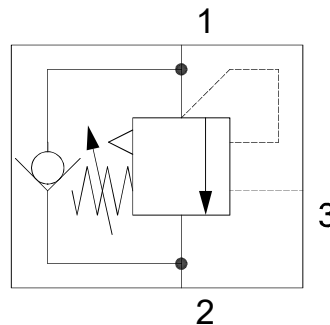
KCB Series Load Holding Valves

Wide range

Each size currently available consists of several versions (normal or vented design), with different pilot ratios, fixed or variable pressure settings, and with different $Q - \Delta p$ characteristics (from the most restrictive for particularly fine movements to the largest openings the size can allow).

Main Technical Features

Flow **30 l/min to 250 l/min**
Max operating pressure **350 bar**
Max set pressure **420 bar**



SAE CAVITIES

3/4-16 UNF (30 l/min)
1-1/16-12 UN (120 l/min)
1-5/8-12 UN (350 l/min)

7/8-14 UNF (60 l/min)
1-5/16-12 UN (200 l/min)

OTHER CAVITIES

T-11A (75 l/min)
A6610 (30 l/min)

T-2A (150 l/min)



HYDRECO
a member of **DAIKIN** group

Scan the QR Code