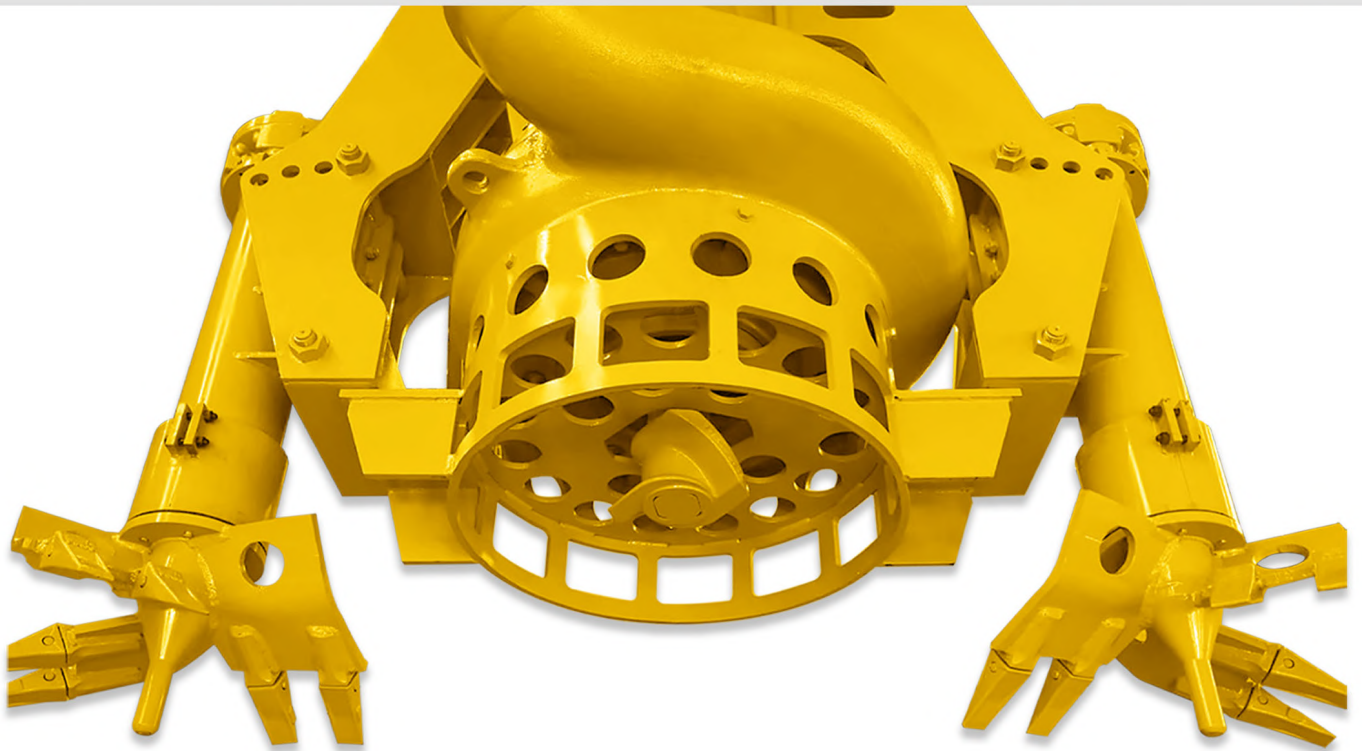
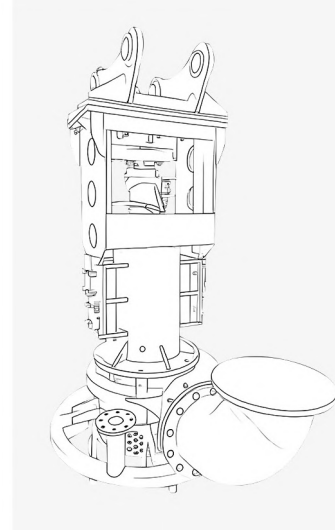
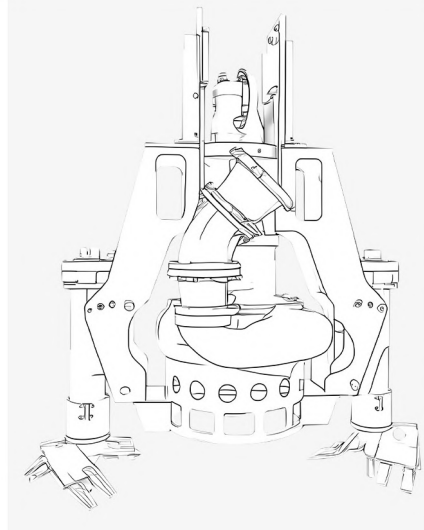
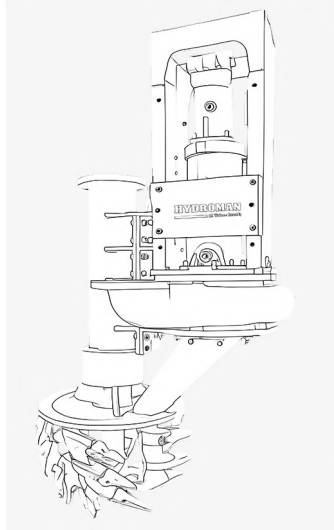
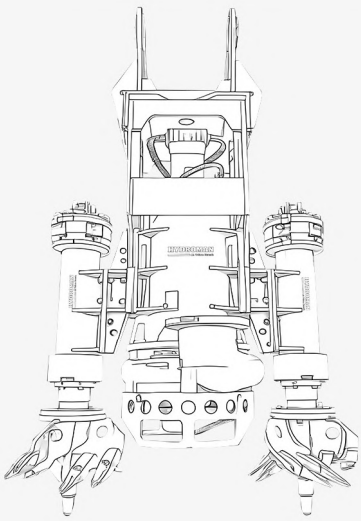
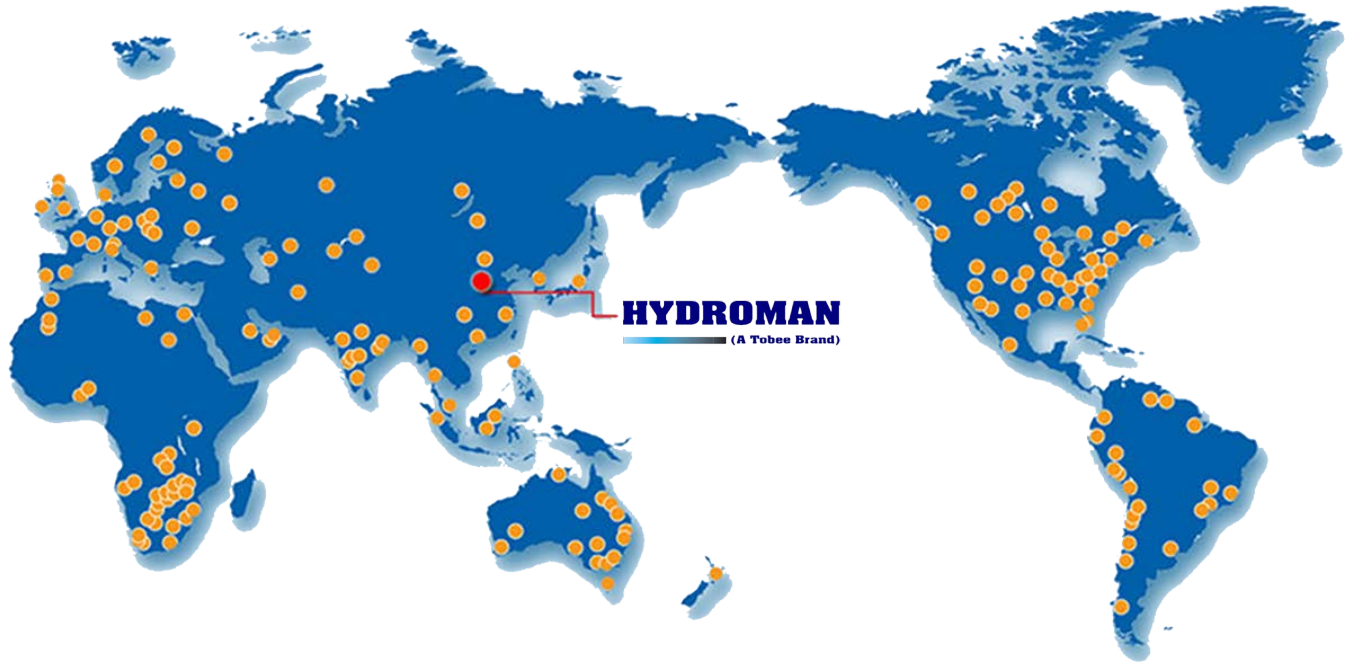


THY SERIES Hydraulic Dredge Pump



HEBEI TOBEE PUMP CO., LIMITED

Hydroman Worldwide



HEBEI TOBEE PUMP CO.,LIMITED

No. 266, Tianshan St,
High-tech Zone,
Shijiazhuang City
050000, China.

Tel.: +86 18032034573
Fax.:+86-0311-87221317
Email: Sales@tobeeump.com
Web: www.hydroman.cn / www.hydroman.store

HYDROMAN
(A Tobee Brand)



COMPANY PROFILE

HYDROMAN

History

Hydroman® is a Tobee brand was established in 2008 as manufacturer submersible pumps with agitator for heavy duty specifically designed for the treatment of slurry with a high content of abrasivesolids.

Thanks to the passion and brilliance of its team of technicians and engineers, Hydroman Pump has proved to be not just a simple alternative to conventional products but also a certainty for clients operating in extremely specialised sectors who must face and solve very difficult applications.

Originally applied to a niche market, mainly acting in dredging and sand and gravel extraction and treatment, Hydroman Pump has subsequently expanded its presence in a wide range of fields.

The excellent world-wide reputation of the trademark for many years has led to the widening of the range of products offered to the market.

Research and Technology

An acknowledged leader in the Industrial and Building sectors, Hydroman Pump fields a varied team of experts able to answer inquiries of all types and to study the most suitable and competitive tailor-made solution for every new application.

Furthermore, our technical and commercial department is always at your complete disposal to offer prompt assistance, including full availability to supply you the best consultancy directly on site, speedy spare parts supply and constant attention to every aspect of aftersales service.



Overview

Hydroman® THY hydraulic dredge pump is a hydraulic machinery with stirring function. Hydroman® hydraulic dredge pumps are made of excellent materials, advanced structure and strong passing capacity, are suitable for conveying media containing solid particles of various particle sizes such as silt, coal slag, tailings, and ore etc., mainly used for dredging and dredging of metallurgy, mines, thermal power plants, steel, water treatment, sand mining, mining, ports, rivers, lakes, ponds; suction and transportation of silt media such as port construction and river and sea beach filling, and is an ideal alternative to traditional slurry pumps, the whole set of hydraulic dredge pump can be flexibly matched with other equipment, such as hydraulic stations, excavators, loaders, etc., to break the power limit and flexibly transfer, especially for construction in remote areas.

This series of pump is designed and manufactured by absorbing advanced foreign technology and combining its own intellectual property rights. THY hydraulic dredge pump equipped with two or more side cutters can stir and dig the settled sludge to loosen it, and the solid medium is sent to the vicinity of the suction port of the hydraulic pump through the blade. The unique sealing device ensures the reliability of mechanical seal operation to the maximum extent and greatly prolongs its service life. The load characteristics of hydraulic drive enable long-term stable and safe operation under harsh working conditions.

Applicable conditions

Hydraulic driven system can be powered by a diesel engine, a motor-driven hydraulic power pack station, or directly driven by an excavator or loader;

The maximum temperature of hydraulic oil shall not exceed 80°C, and cooling devices shall be added for forced cooling during long-term operation;

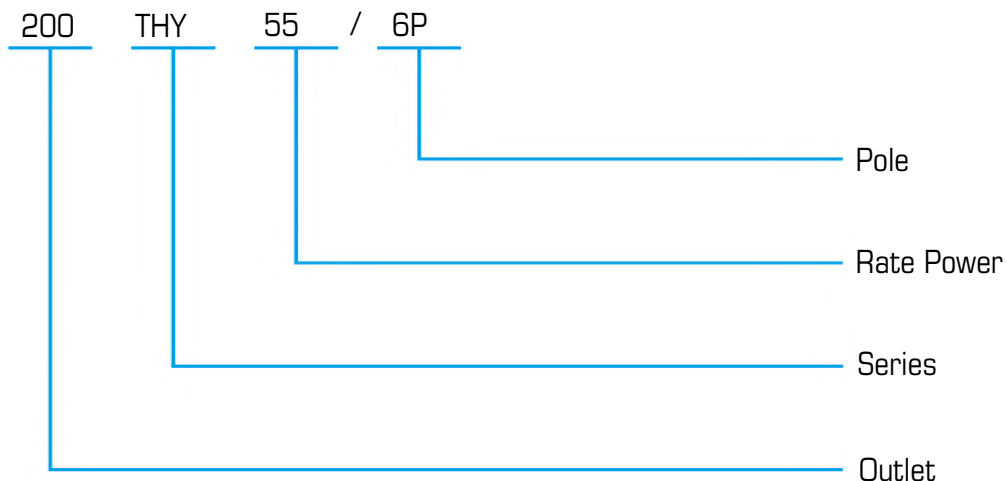
The maximum volume concentration of solid particles in the pumping liquids can reach 60%;

The pump is best to work upright in the pumping liquids and can run continuously;

Advantages

1. Hydraulic drive has many advantages over mechanical and electric drive.
2. No damage in case of stalling or overloading, strong load capacity and automatic overload protection;
3. Suitable for harsh working conditions such as ore sand, mud, hardened layers, and pebbles;
4. The hydraulic motor is light in weight, high in torque, small in size, low inertia and fast in response;
5. Easy to operate and control, and can achieve a wide range of stepless speed regulation;
6. According to the working conditions, the hydraulic system can be automatically controlled and remotely controlled by combining electromechanical and hydraulic functions.

Model significance





THY Performance Chart

| Item | Hydraulic pump specification | | | | | | Hydraulic motor specification | | | | | | |
|------|------------------------------|-------------|--------------------|----------|------------|----------------------|-------------------------------|----------------|----------------------|-----|-----|-----|-----|
| | Model | Outlet (mm) | Capacity (mi/hour) | Head (m) | Power (KW) | Solids handling (mm) | Displacement (ml/r) | Pressure (Mpa) | Oil capacity (L/min) | | | | |
| 1 | 65THY3-6P | 65 | 30 | 10 | 3 | 14 | 12 | 10 | 18 | | | | |
| | | 65 | 15 | 12 | | | 12 | 14 | 18 | | | | |
| 2 | 65THY4-6P | 65 | 30 | 16 | 4 | | | | | 14 | 12 | 14 | 18 |
| | | 65 | 25 | 20 | | | | | | | | | |
| 3 | 80THY5.5-6P | 80 | 45 | 15 | 5.5 | | 14 | 23 | 10 | | 35 | | |
| | | 80 | 50 | 10 | | | | | | | | | |
| 4 | 80THY7.5-6P | 80 | 25 | 30 | 7.5 | | | 14 | 23 | | 10 | 35 | |
| | | 80 | 30 | 30 | | | | | | | | | |
| | | 80 | 32 | 20 | | | | | | | | | |
| | | 80 | 45 | 15 | | | | | | | | | |
| 5 | 100THY7.5-6P | 100 | 100 | 10 | 11 | 30 | | | 28 | | 16 | 42 | |
| 6 | 80THY11-6P | 80 | 40 | 25 | | | | | | | | | 11 |
| | | 80 | 50 | 21 | | | | | | | | | |
| 7 | 100THY11-6P | 100 | 70 | 21 | 11 | | | | 30 | 28 | 16 | 42 | |
| | | 100 | 100 | 16 | | | | | | | | | |
| 8 | 80THY15-6P | 80 | 25 | 40 | 15 | | 30 | | | 28 | 22 | 42 | |
| | | 80 | 50 | 26 | | | | | | | | | |
| 9 | 100THY15-6P | 100 | 50 | 28 | 15 | | | 30 | | 28 | 22 | 42 | |
| | | 100 | 60 | 30 | | | | | | | | | |
| | | 100 | 70 | 24 | | | | | | | | | |
| | | 100 | 75 | 25 | | | | | | | | | |
| | | 100 | 100 | 18 | | | | | | | | | |
| 10 | 100/150THY15-6P | 100/150 | 150 | 15 | 18.5 | 30 | | | | 45 | 17 | 68 | |
| 11 | 100THY18.5-6P | 100 | 150 | 20 | | | | | | | | | |
| 12 | 150THY18.5-6P | 150 | 150 | 18 | 18.5 | | | | 30 | 45 | 17 | 68 | |
| | | 150 | 200 | 12 | | | | | | | | | |
| 13 | 100THY22-6P | 100 | 100 | 25 | 22 | | 30 | | | 80 | 17 | 80 | |
| | | 100 | 100 | 30 | | | | | | | | | |
| 14 | 150THY22-6P | 150 | 150 | 22 | 22 | | | 30 | | 80 | 17 | 80 | |
| | | 150 | 200 | 15 | | | | | | | | | |
| 15 | 200THY22-6P | 200 | 300 | 10 | 30 | | | | | 30 | 80 | 17 | 80 |
| 16 | 100THY30-6P | 100 | 60 | 46 | | | | | | | | | |
| | | 100 | 70 | 38 | | | | | | | | | |
| 17 | 150THY30-6P | 100 | 75 | 45 | 30 | 30 | | | | | 80 | 23 | 80 |
| | | 150 | 100 | 35 | | | | | | | | | |
| | | 150 | 108 | 30 | | | | | | | | | |
| | | 150 | 150 | 30 | | | | | | | | | |
| | | 150 | 200 | 20 | | | | | | | | | |
| | | 150 | 200 | 25 | | | | | | | | | |
| | | 150 | 240 | 20 | | | | | | | | | |
| 150 | 250 | 20 | | | | | | | | | | | |
| 18 | 200THY30-6P | 200 | 300 | 15 | 37 | | 30 | 107 | 21 | 107 | | | |
| 19 | 150THY37-6P | 150 | 150 | 35 | | | | | | | | | |
| 20 | 100/150THY37-6P | 100/150 | 100 | 50 | 37 | 30 | | 107 | 21 | 107 | | | |
| 21 | 100THY37-6P | 100 | 160 | 30 | | | | | | | | | |
| 22 | 200THY37-6P | 200 | 300 | 20 | 37 | | | 30 | 107 | 21 | 107 | | |
| | | 200 | 400 | 15 | | | | | | | | | |
| 23 | 150THY45-6P | 150 | 100 | 60 | 45 | | | | 30 | 125 | 22 | 125 | |
| 24 | 100THY45-6P | 100 | 160 | 38 | | | | | | | | | |
| 25 | 150THY45-6P | 150 | 200 | 30 | 45 | | | | | 30 | 125 | 22 | 125 |
| | | 200 | 500 | 15 | | | | | | | | | |
| 26 | 200THY45-6P | 200 | 300 | 25 | 45 | | 30 | | | | 125 | 22 | 125 |
| | | 200 | 300 | 25 | | | | | | | | | |
| 27 | 80THY55-6P | 80 | 120 | 60 | 55 | 30 | | | | | 125 | 27 | 125 |
| 28 | 150THY55-6P | 150 | 150 | 45 | | | | | | | | | |
| 28 | 150THY55-6P | 150 | 250 | 35 | 55 | | | 30 | | | 125 | 27 | 125 |
| | | 150 | 250 | 35 | | | | | | | | | |
| 29 | 200THY55-6P | 200 | 600 | 15 | 55 | | | | 30 | | 125 | 27 | 125 |
| | | 200 | 600 | 15 | | | | | | | | | |

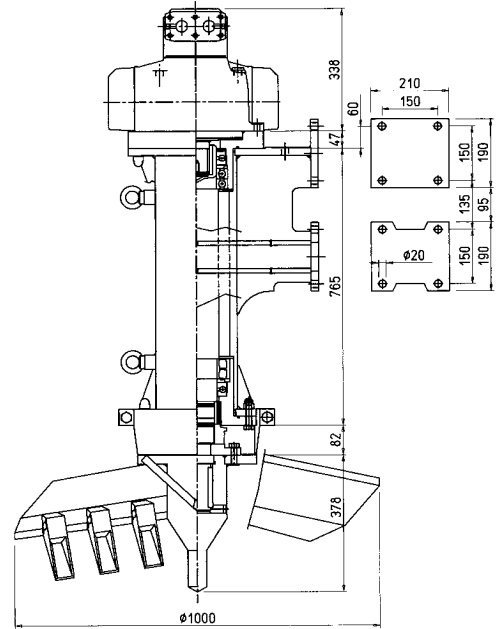
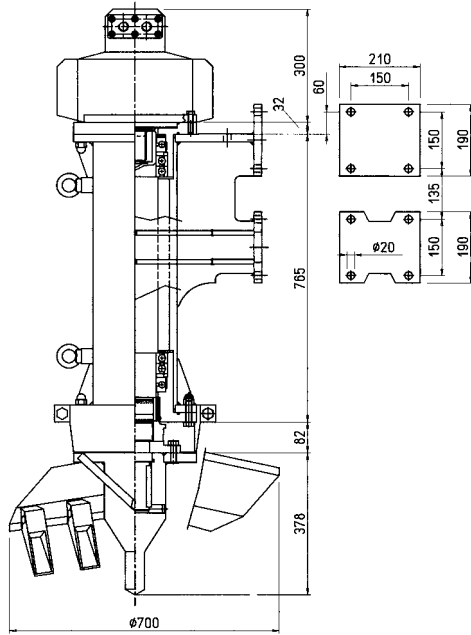


| Item | Hydraulic pump specification | | | | | | Hydraulic motor specification | | |
|------|------------------------------|-------------|--------------------|----------|------------|----------------------|-------------------------------|----------------|----------------------|
| | Model | Outlet (mm) | Capacity (mi/hour) | Head (m) | Power (KW) | Solids handling (mm) | Displacement (ml/r) | Pressure (Mpa) | Oil capacity (L/min) |
| 30 | 150THY75-6P | 150 | 150 | 60 | 75 | 32 | 160 | 28 | 160 |
| | | 150 | 250 | 45 | | 60 | | | |
| | | 150 | 200 | 45 | | | | | |
| 31 | 200THY75-6P | 200 | 350 | 35 | 75 | 60 | 160 | 28 | 160 |
| | | 200 | 400 | 25 | | | | | |
| | | 200 | 450 | 25 | | | | | |
| | | 200 | 500 | 20 | | | | | |
| | | 200 | 470 | 22 | | | | | |
| | | 200 | 300 | 30 | | | | | |
| 32 | 150THY75-6P | 150 | 200 | 50 | 75 | 30 | 160 | 28 | 160 |
| 33 | 150THY90-6P | 150 | 200 | 60 | 90 | 30 | | | |
| 34 | 200THY90-6P | 200 | 400 | 40 | | 60 | | | |
| | | 200 | 500 | 25 | | 70 | | | |
| 35 | 150THY90-6P | 150 | 150 | 75 | 90 | 30 | 200 | 27 | 200 |
| | | 150 | 160 | 70 | | | | | |
| | | 150 | 250 | 60 | | | | | |
| | | 150 | 300 | 45 | | | | | |
| 36 | 200THY90-6P | 200 | 450 | 30 | 90 | 60 | 200 | 27 | 200 |
| 37 | 150THY110-6P | 150 | 150 | 80 | 110 | 30 | | | |
| 38 | 200THY110-6P | 200 | 450 | 45 | | 60 | | | |
| | | 200 | 400 | 50 | | | | | |
| | | 200 | 600 | 30 | | | | | |
| 39 | 300THY110-6P | 300 | 780 | 26 | 110 | 70 | 250 | 27 | 250 |
| | | 300 | 1000 | 18 | | | | | |
| 40 | 250THY110-6P | 250 | 700 | 25 | 110 | 30 | 250 | 27 | 250 |
| 41 | 200THY132-6P | 200 | 400 | 30 | 132 | 60 | | | |
| | | 200 | 500 | 55 | | | | | |
| 42 | 300THY132-6P | 300 | 800 | 35 | | 132 | 70 | 250 | 27 |
| | | 300 | 1000 | 22 | | | | | |
| | | 300 | 1000 | 22 | | | | | |
| 43 | 150THY132-6P | 150 | 250 | 70 | 132 | 50 | 250 | 27 | 300 |
| | | 150 | 300 | 65 | | | | | |
| 44 | 250THY132-6P | 250 | 700 | 30 | 132 | 70 | | | |
| 45 | 200THY160-6P | 200 | 650 | 52 | 160 | 30 | | | |
| 46 | 300THY160-6P | 300 | 1000 | 30 | | 70 | | | |
| 47 | 300THY185-6P | 300 | 780 | 50 | 160 | 45 | 500 | 23 | 500 |
| 48 | 250THY200-6P | 250 | 600 | 55 | 200 | 45 | 500 | 24 | 500 |
| 49 | 300THY200-6P | 300 | 800 | 45 | | 45 | | | |
| | | 300 | 1000 | 40 | | 45 | | | |
| 50 | 350THY200-6P | 350 | 1500 | 20 | 200 | 45 | 500 | 27 | 500 |
| 51 | 400THY200-6P | 400 | 2000 | 20 | 45 | | | | |
| 52 | 300THY220-6P | 300 | 800 | 55 | 220 | 45 | | | |
| 53 | 350THY220-6P | 350 | 1250 | 35 | | | | | |
| 54 | 350THY250-6P | 350 | 1750 | 30 | 250 | 45 | 710 | 22 | 710 |
| | | 350 | 1500 | 35 | | | | | |
| 55 | 400THY280-6P | 400 | 1500 | 40 | 280 | 90 | | 26 | |
| 56 | 300THY280-6P | 300 | 1200 | 50 | | | | | |
| 57 | 400THY315-6P | 400 | 2000 | 35 | 315 | 45 | 1000 | 20 | 1000 |

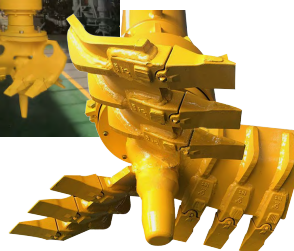


Hydraulic Side Agitator Specification

| Item | Name | Model | Oil Capacity (L/min) | Pressure (Mpa) | Torque (N.M) | Speed (r/min) | Displace (CC) |
|------|--------------|-----------|----------------------|----------------|--------------|---------------|---------------|
| 1 | Side Cutters | Expro-7.5 | 30 | 22 | 1946 | 48 | 600 |
| 2 | Side Cutters | Expro-11 | 30 | 25 | 2433 | 48 | 630 |
| 3 | Side Cutters | Expro-15 | 38 | 28 | 2730 | 60 | 630 |
| 4 | Side Cutters | Expro-22 | 60 | 25 | 3800 | 60 | 1000 |



Hydroman ExPro™



VS

Other Suppliers



Hydraulic Head Cutter Specification

| Item | Name | Model | Oil Capacity (L/min) | Pressure (Mpa) | Torque (N.M) | Speed (r/min) | Displace (CC) |
|------|------------------|--------------|----------------------|----------------|--------------|---------------|---------------|
| 1 | Head Cutter | Mixpro-15 | 36 | 25 | 4800 | 57 | 1200 |
| 2 | Head Cutter | Mixpro-22 | 53 | 25 | 5800 | 53 | 1700 |
| 3 | Side Head Cutter | Mixpro-15L/R | 36 | 25 | 2520 | 50 | 630 |
| 4 | Side Head Cutter | Mixpro-22L/R | 53 | 25 | 3960 | 50 | 1000 |

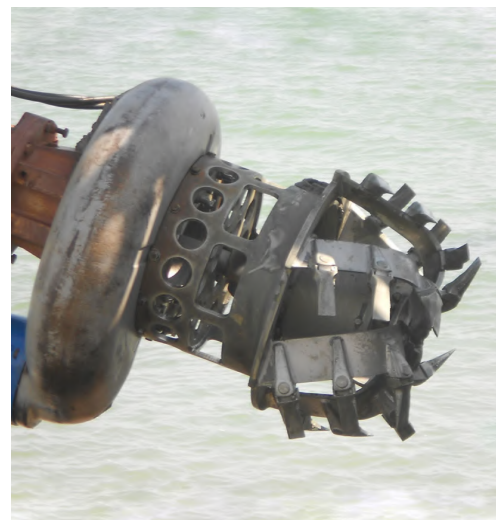


Hydroman MixPro™

Other Suppliers



VS





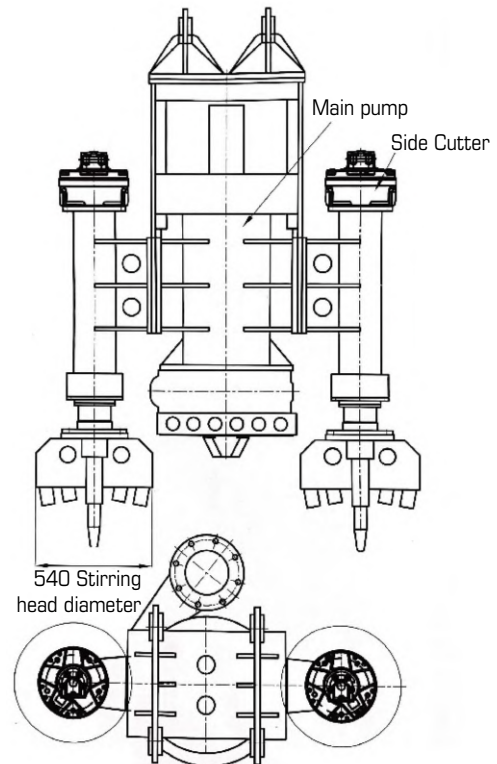
Structural features and Working principle

When Hydroman® THY hydraulic dredge pump is working, the stirring device on both sides rotate to drive the solid particle pump liquids to flow, and the stirring blades rotate and push it to the suction port of the sand pump to achieve suction and discharge.

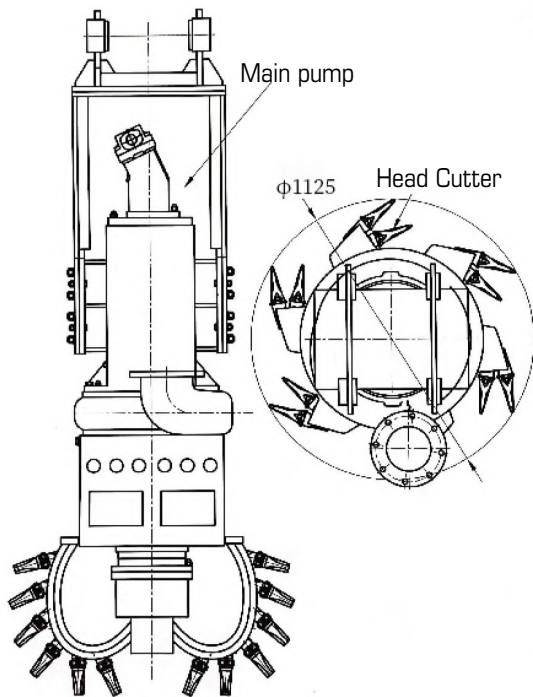
The main features are as follows:

- The stirring device with a low speed and high torque feature can dig and stir compacted mud, large granular solids, pebbles, etc.
- In addition to the impeller, the pump is also equipped with an agitator impeller at the bottom, which can stir the sludge deposited at the bottom of the water into turbulence and then extract it.
- The pump casing, impeller and other main wetted parts are made of highly wear-resistant materials, which are wear-resistant, non-clogging, and have strong slurries discharge capacity, and can effectively pass larger solid particles.
- Not limited by suction range, high slag suction efficiency, more thorough dredging.
- The whole dredge pump can be submerged underwater, without the need to build complex ground protection and fixing devices, making management easier.
- The stirring device and the agitator impeller directly contact the sedimentation surface, and the concentration is controlled by the diving depth, so the concentration control is more flexible.
- The hydraulic pump works directly underwater without noise or vibration, making the site cleaner.

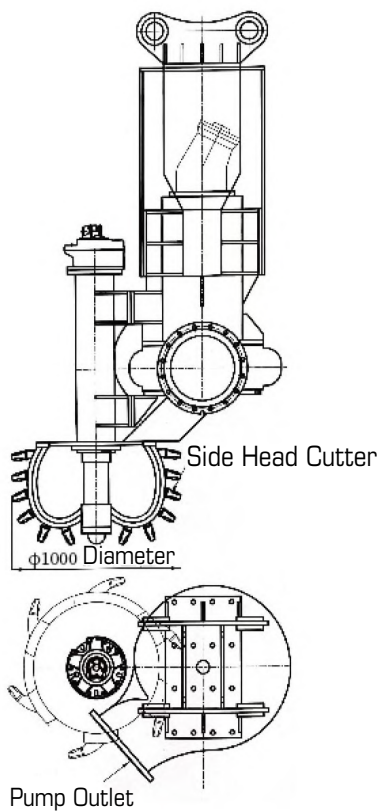
Hydraulic Side Agitator Version



Hydraulic Head Cutter Version

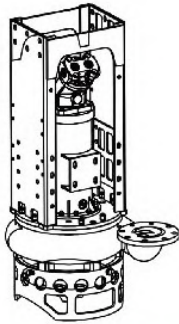


Hydraulic Side Head Cutter Version

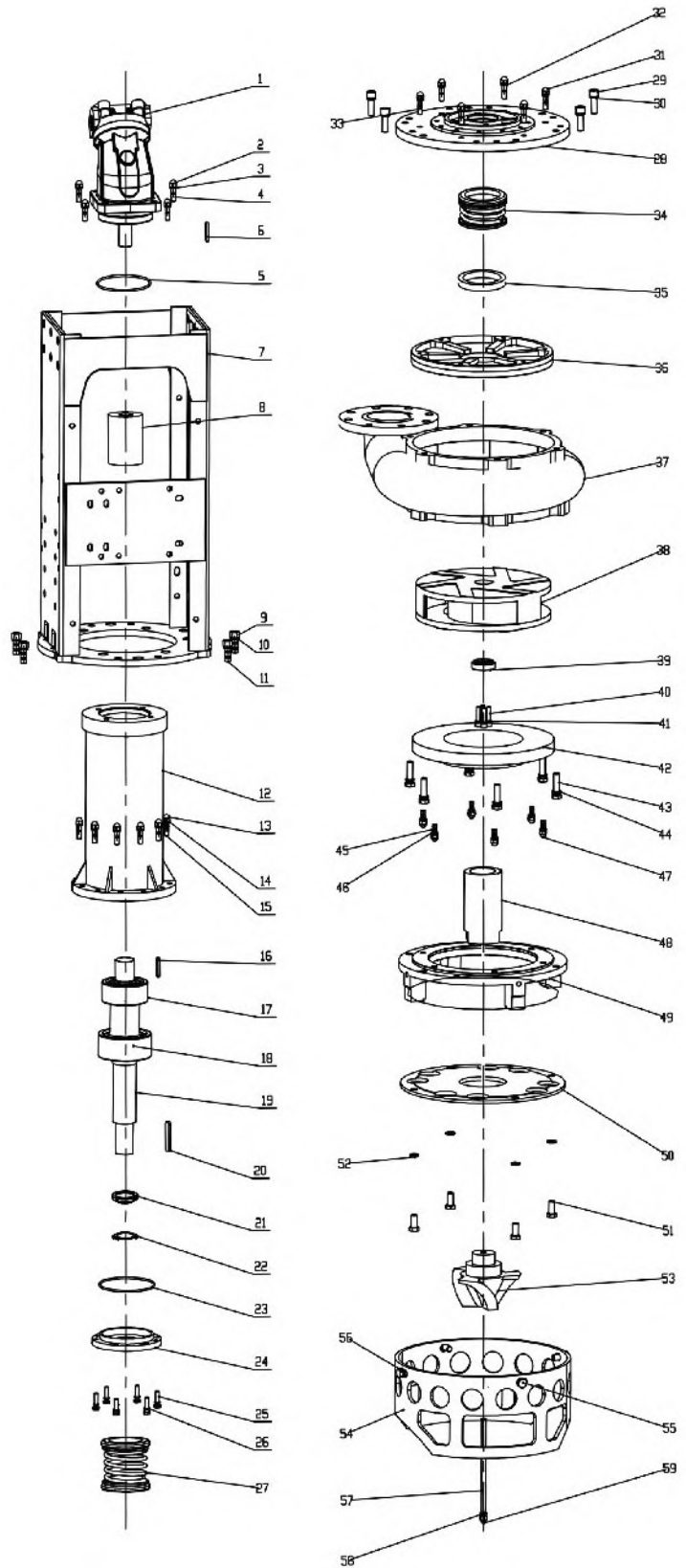




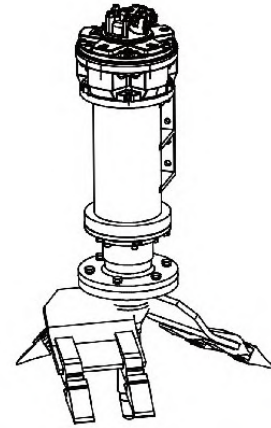
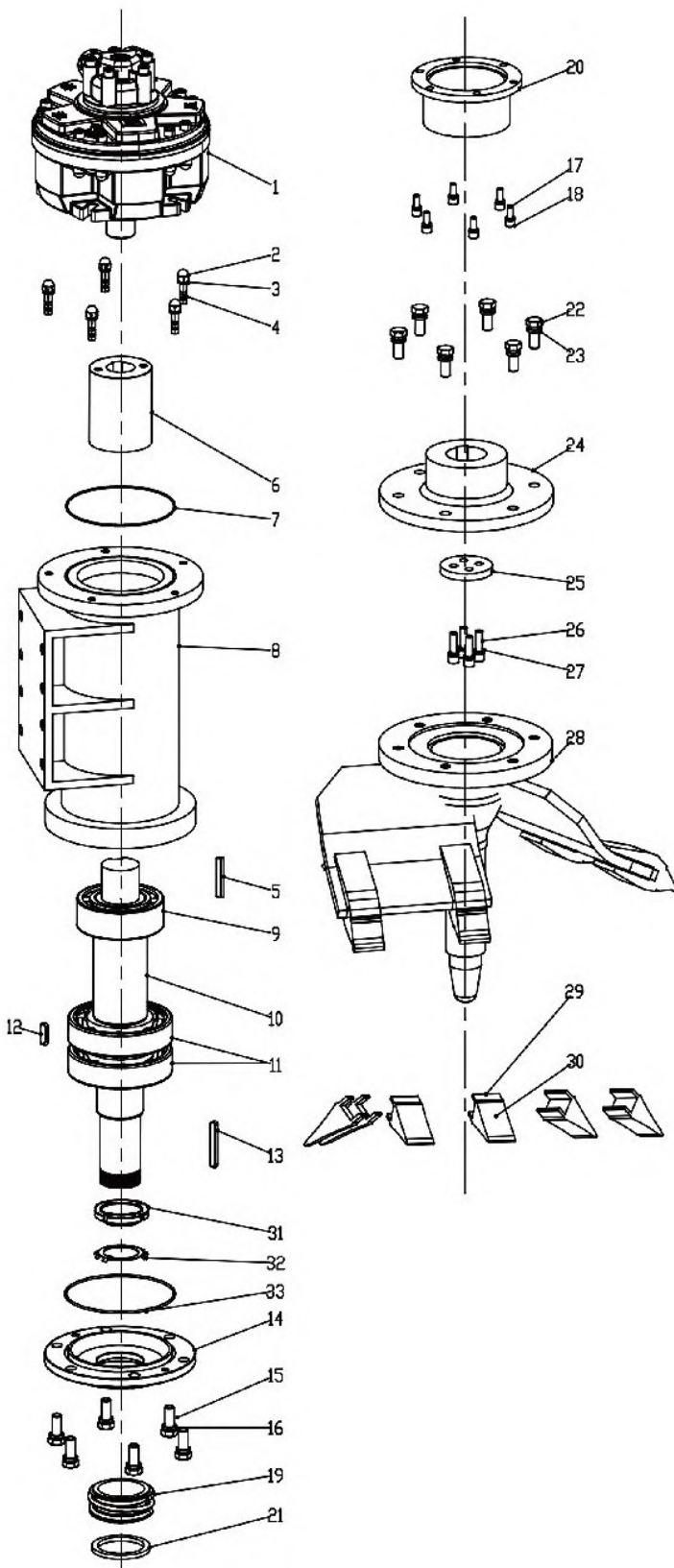
Hydraulic Dredge Pump Exploded View Drawing



| Item | Partname | Material | Quantity |
|------|-------------------------|----------|----------|
| 1 | Hydraulic Motor | / | 1 |
| 2 | Cap Nut M12 | A2-70 | 4 |
| 3 | Gasket M12 | A2-70 | 4 |
| 4 | Stud M12x45 | A2-70 | 4 |
| 5 | O-ring 148x3.55 | NBR | 1 |
| 6 | Key 10x56 | A2-70 | 1 |
| 7 | Hanger | Q235 | 1 |
| 8 | Coupling | 45# | 1 |
| 9 | Hex Nut M16 | A2-70 | 8 |
| 10 | Gasket M16 | A2-70 | 8 |
| 11 | Stud M6x45 | A2-70 | 8 |
| 12 | Bearing Hose | Q235 | 1 |
| 13 | Cap Nut M12 | A2-70 | 12 |
| 14 | Gasket M12 | A2-70 | 12 |
| 15 | Stud M12x40 | A2-70 | 12 |
| 16 | Key 16x57 | A2-70 | 1 |
| 17 | Bearing 3212 | GCr4 | 1 |
| 18 | Bearing 3314 | GCr4 | 1 |
| 19 | Shaft | 40Cr | 1 |
| 20 | Key 14x90 | A2-70 | 1 |
| 21 | Round nut M68x2 | 201 | 1 |
| 22 | Thrust washer M68 | 65Mn | 4 |
| 23 | O-ring 150x3.55 | NBR | 4 |
| 24 | Bearing Cover | HT200 | 1 |
| 25 | Hex Bolt M10x40 | A2-70 | 4 |
| 26 | Gasket M10 | A2-70 | 4 |
| 27 | Mechanical Seal | | 1 |
| 28 | Pump Cover | QT500-7 | 1 |
| 29 | Hex Socket Screw M16x45 | A2-70 | 6 |
| 30 | Gasket M16 | A2-70 | 6 |
| 31 | Cap Nut M12 | A2-70 | 6 |
| 32 | Gasket M12 | A2-70 | 6 |
| 33 | Stud M12x40 | A2-70 | 6 |
| 34 | Mechanical Seal | | 1 |
| 35 | Mechanical Seal Gasket | 45 | 1 |
| 36 | Back Wear Liner | KMTBCr27 | 1 |
| 37 | Pump Casing | KMTBCr27 | 1 |
| 38 | Impeller | KMTBCr27 | 1 |
| 39 | Impeller Cover Plate | 45 | 1 |
| 40 | Hex Socket Screw M10x45 | A2-70 | 4 |
| 41 | Gasket M10 | A2-70 | 4 |
| 42 | Front Wear Liner | CR26 | 1 |
| 43 | Hex Bolt M16x45 | A2-70 | 6 |
| 44 | Gasket M16 | A2-70 | 6 |
| 45 | Stud M12x25 | A2-70 | 6 |
| 46 | Gasket M12 | A2-70 | 6 |
| 47 | Cap Nut M12 | A2-70 | 6 |
| 48 | Hub | KMTBCr27 | 1 |
| 49 | Pump Stand | HT200 | 1 |
| 50 | Inlet Screen | Q235 | 1 |
| 51 | Hex Bolt M16x35 | A2-70 | 4 |
| 52 | Gasket M16 | A2-70 | 4 |
| 53 | Agitator | KMTBCr27 | 1 |
| 54 | Base | Q235 | 1 |
| 55 | Hex Bolt M16x35 | A2-70 | 4 |
| 56 | Gasket M16 | A2-70 | 4 |
| 57 | Draw-in bolt | 2Cr13 | 1 |
| 58 | Gasket M12 | A2-70 | 1 |
| 59 | Cap Nut M12 | A2-70 | 1 |



Hydraulic Side Agitator Exploded View Drawing



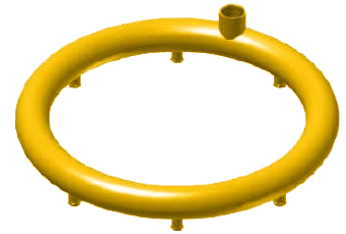
| Item | Part name | Material | Quantity |
|------|-------------------------|----------|----------|
| 1 | Hydraulic Motor | A2-70 | 1 |
| 2 | Cap Nut M12 | A2-70 | 5 |
| 3 | Gasket M12 | A2-70 | 5 |
| 4 | Stud M12x40 | 2Cr13 | 5 |
| 5 | Key 18x60 | 45# | 1 |
| 6 | Coupling | NBR | 1 |
| 7 | O-ring | Q235 | 1 |
| 8 | Bearing Hose | GCr4 | 1 |
| 9 | Bearing 3217 | 40Cr | 1 |
| 10 | Shaft | GCr4 | 1 |
| 11 | Bearing 6317 | 2Cr13 | 2 |
| 12 | Key 12x27 | 2Cr13 | 1 |
| 13 | Key 20x90 | HT200 | 1 |
| 14 | Bearing Hose Cover | A2-70 | 1 |
| 15 | Hex Bolt M16x40 | A2-70 | 6 |
| 16 | Gasket M16 | A2-70 | 6 |
| 17 | Hex Socket Screw M16x25 | A2-70 | 6 |
| 18 | Gasket M10 | A2-70 | 6 |
| 19 | Mechanical Seal 10980 | / | 1 |
| 20 | Sleeve | Q235 | 1 |
| 21 | Mechanical Seal Gasket | Q235 | 1 |
| 22 | Hex Bolt M16x40 | A2-70 | 6 |
| 23 | Gasket M16 | A2-70 | 6 |
| 24 | Flange | Q235 | 1 |
| 25 | Shaft head cover | Q235 | 1 |
| 26 | Hex Bolt M12x40 | A2-70 | 4 |
| 27 | Gasket M12 | A2-70 | 4 |
| 28 | Cutter head assembly | / | 1 |
| 29 | Gear sleeve | Alloy | 6 |
| 30 | Dedendum | Alloy | 6 |
| 31 | Round nut M85x2 | 201 | 1 |
| 32 | Thrust nut | 65Mn | 1 |
| 33 | O-ring | NBR | 1 |



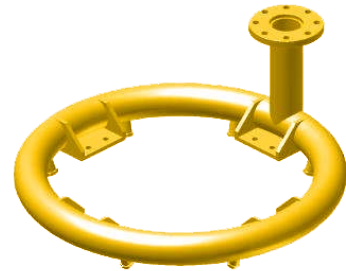
iShot™ Jet Ring System



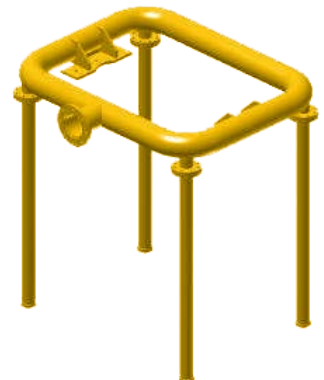
| iShot™ JET RING FRAME FOR ≤15kw | | | |
|---------------------------------|-------------------------------|---|-----|
| TECHNICAL SPECIFICATIONS | | | |
| Water Capacity [m³/h] | 20 | | |
| Pressure [bar] | 6 – 7 | | |
| Water inlet diameter [mm] | 32 (1" ¼) | | |
| Nozzle diameter [mm] | 7.3 | 6 | 5.2 |
| Number of nozzles | 4 | 6 | 8 |
| Weight [kg] | 15 | | |
| Material | S235 (A283C) Structural Steel | | |



| iShot™ JET RING FRAME FOR 18.5 – 90kw | | | |
|---------------------------------------|-------------------------------|------|----|
| TECHNICAL SPECIFICATIONS | | | |
| Water Capacity [m³/h] | 60 | | |
| Pressure [bar] | 6 – 7 | | |
| Water inlet diameter [mm] | DN80 PN10 | | |
| Nozzle diameter [mm] | 15.6 | 12.8 | 11 |
| Number of nozzles | 4 | 6 | 8 |
| Weight [kg] | 15 | | |
| Material | S235 (A283C) Structural Steel | | |



| iShot™ JET RING FRAME FOR 110-315kw | |
|-------------------------------------|-------------------------------|
| TECHNICAL SPECIFICATIONS | |
| Water Capacity [m³/h] | 180 |
| Pressure [bar] | 6 – 7 |
| Water inlet diameter [mm] | DN150 PN10 |
| Nozzle diameter [mm] | 1" |
| Number of nozzles | 4 |
| Weight [kg] | 320 |
| Material | S235 (A283C) Structural Steel |



Hydraulic Power Pack (Variableflow)

Hydroman hydraulic power pack, suitably sized for the pumps to be driven, can also be sized to drive hoist and winches, auxiliary services.

Components: Base plate, drive (diesel engine/electric motor), variable flow oil pumps, oil reservoir, control box, accessories.

Remote control version: on request.



| Model | Power | KW-HP | Max. Hydraulic Oil | | Max. Hydraulic Oil for Second Pump | | Max. Pressure |
|-------------------|-------------------|---------|--------------------|------|------------------------------------|-----------|---------------|
| | | | l/min | GPM | l/min | GPM | |
| HDP/HEP30 | Diesel / Electric | 30-40 | 40 | 10.5 | On demand | On demand | 300-4350 |
| HDP/HEP33 | Diesel / Electric | 33-45 | 65 | 17 | On demand | On demand | 300-4350 |
| HDP/HEP66 | Diesel / Electric | 66-89 | 90 | 24 | On demand | On demand | 300-4350 |
| HDP/HEP93 | Diesel / Electric | 93-126 | 130 | 34.5 | On demand | On demand | 300-4350 |
| HDP/HEP129E22 | Diesel / Electric | 129-175 | 130 | 34.5 | 70 | 18.5 | 300-4350 |
| HDP/HEP175/160 | Diesel / Electric | 175-238 | 240 | 63.5 | On demand | On demand | 300-4350 |
| HDP/HEP260/160E22 | Diesel / Electric | 260-353 | 240 | 63.5 | 70 | 18.5 | 300-4350 |
| HDP/HEP315 | Diesel / Electric | 315-428 | 375 | 99 | On demand | On demand | 350-5000 |
| HDP/HEP375E23 | Diesel / Electric | 375-510 | 375 | 99 | 110 | 29 | 350-5000 |
| HDP/HEP375 | Diesel / Electric | 375-510 | 610 | 161 | On demand | On demand | 350-5000 |
| HDP/HEP470E23 | Diesel / Electric | 470-638 | 610 | 161 | 110 | 110 | 350-5000 |



Waste sludge handling / Tank clean out / Waste collection ponds / Thickener clean out / Barge unloading.



Waste collection pit / Ash sumps / Dredging waste ponds / Bark Collection pit / Clean up sumps.



Gold tailings reclamation / Ball mill sumps / Settling and collection ponds / Underground slimes collection ponds / Conveyor tunnel sumps / Tailings back-fill system / Preparation plant collection sumps / Coal tailings relocation / Open pit slimes removal / Crusher sumps / Grinding area sumps / Flotation area sumps / Removal of material of material from thickeners / Truck wash sumps.

Mill scale pits / Coke plant scale pit / Blast furnace slag pit / Water treatment sumps / Clean up sumps.



Dredging deep deposits (up to 120 m deep) / Recovery of sand not mined by primary dredge / Sands mining.



Trench clean out and back-fill in pipe-cable laying projects / Clean out caissons in construction / Transfer of bentonite slurry / Overburden removal / Silt from gravel washing.



Removal of silt build up at marinas, harbours, dock loading facilities, etc. / Clean out of contaminated sludge collection ponds / Reclaiming beaches / River, lake and canal clean out.



Coke conveyor spillage sumps / Crude oil tank clean out / Sludge transfer / Settling-collection pits / Tailings recovery / Coke fines collection pit / Relocation of sand filled drilling rigs / Drilling mud barge unloading.



De-silting water intakes / Emergency dump pond / Ash decant sumps / Fly ash collection sump / Ash and waste collection pit / Scrubber sludge transfer / Lime collection pit / Coal wash-down sumps.



Pumping marble dust.



Application range



200THY55-6P +2 Expro-7.5 for River Dredging. (UK)





200THY90-6P + 2 Expro-11 Mounting on Komatsu 36 ton Excavater in Quarry. (UK)



200THY75-6P+2 Expro-11 Installation on Hitachi Ex-200 for Sludge Handling. (New Zealand)



150THY45-6P for Reclaiming Beaches. (Italy)

200THY55-6P + 2 Expro-7.5 Fit for Komatsu PC300 for Sand Extraction. (Philippines)



150THY55-6P for Suction Silica Sand. (Indonesia)



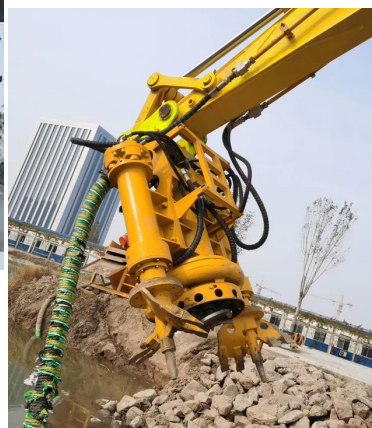
150THY90-6P+Mixpro-22: Mud Removal Obtained from Inert Matter Washing. (Russia)



200THY75-6P Coupled on Excavator 36t HX Hyundai. (Australia)



300THY110-6P + 2 Expro-15 on Sany 750 Excavatoe. (Russia)



150THY75-6P on XCMG XE370CA for Dredging Working. (Canada)



100THY37-6P+2 Expro-7.5 for Lake Cleaning out. (USA)