



THE HOME OF GREAT MACHINERY



SALES | HIRE | SERVICE | SPARES | LOGISTICS



Ireland Depot



+353 045 813133



Doyle Machinery, Unit 42, Monread
Business Park, Monread Road,
Naas, County Kildare, W91 RC6E



www.doylemachinery.ie

Southern Depot



+44 (0) 3330 433322



Doyle Machinery Limited,
Long Lane Farm, Ascot Road,
Holyport, Maidenhead SL6 3LG



www.doylemachinery.com

Northern Depot



+44 (0) 3330 433322



Unit 1-4 Wentworth Way,
Wentworth Industrial Park,
Tankersley, Barnsley S75 3DH



www.doylemachinery.com

ABOUT US

Established in 1989, Doyle Machinery has grown from its origins as a distributor of agricultural, forestry, recycling, and materials handling equipment into a leading supplier of advanced machinery solutions across the UK and Ireland. With deep family roots in Ireland and decades of industry experience, we are proud to offer unmatched expertise and customer support.

We specialise in importing and distributing high-performance machinery for a wide range of sectors, including waste and recycling, construction, scrap metal, demolition, quarrying, energy, forestry, and ports.

Providing complete machinery solutions across the UK and Ireland, we offer the sale of new and used equipment, servicing, spare parts, and logistics tailored to meet the demands of modern industrial operations.

Our dedicated team is committed to delivering total machinery solutions. Whether you're looking for new or used machinery sales, short or long-term hire, contract hire, expert servicing, or logistical support, we work closely with our clients to deliver innovative, cost-effective, and dependable results.

We proudly represent world-renowned OEM brands, including ARJES, EUREC, DOPPSTADT, UFKES GREENTEC, BARFORD, SIBILIA, and DUPUY ensuring we deliver only the highest quality equipment and technology.





SLOW SPEED SHREDDERS



 Volvo Penta TAD 582 VE – 220hp

Arjes COMPAKTOR 300

- Quick change cassette frame with Paddle, Concrete, or Star shafts
- High-volume hopper with adjustable side combs for controlled output size
- Tracked chassis with hooklift for excellent mobility and easy transport
- Height-adjustable overband magnet with integrated water spray for dust control
- Diesel Volvo Penta (5L engine) or Electric (160 kW motor) drive options
- Suitable for: Construction and Commercial Waste, Waste Wood, Green Waste, Rubber and Waste Tyres, Aluminium and Plastic/UPVC

 7.8m x 2.3m x 3.7m  15,000 kg



 Volvo Penta TAD 883 VE - 320hp

Arjes EKOMAXX 800

- Quick change cassette frame with an option of Paddle or Star shafts
- Hydraulic adjustable self-cleaning fan to create air flow in the engine compartment
- Height-adjustable overband magnet for metal separation and water sprinkler for dust reduction
- Diesel Volvo Penta (8L/405 kW engine) or Electric (250 kW motor) drive options
- Suitable for: Commercial Waste, Rubber and Waste Tyres, Biomass and Green Waste, Waste Wood, Paper and Cardboard
- Optional: A hydraulically adjustable tilting hopper designed to increase processing times

 9.9m x 2.5m x 4m  21,000 kg



 Volvo Penta TAD 1385 VE - 550hp

Arjes TITAN 900

- Quick change cassette frame with Paddle, Metal, or Star shafts
- Cleanfix Self-Cleaning Fan reduces dust buildup in the engine compartment
- Hydraulically Adjustable Magnet for efficient ferrous separation
- Diesel Volvo Penta (13L/405 kW engine) or Electric (twin 250 kW motors) drive options
- SCU Control System for easy operation and optimised shredding programmes
- Suitable for: Commercial Waste, Rubber and Waste Tyres, Waste Wood, CFRP/GFRP, and Aluminium

 11m x 3m x 4.2m  35,000 kg



 Volvo Penta TAD 1385 VE - 550hp

Arjes TITAN 950 / VZ950DK (Metal Version)

- Quick change cassette frame with Paddle, Star or heavy-duty 10/2 Metal shafts for extreme material toughness
- Automatic Cleanfix Self-Cleaning Fan reduces dust buildup in the engine compartment
- Enhanced ferrous separation with heavy-duty magnet and cross conveyor belt
- Diesel Volvo Penta (13L/405 kW engine) or Electric (twin 250 kW motors) drive options
- Expanded SCU control system for faster program switching and advanced shredding settings
- 950 is suitable for: Commercial Waste, Rubber and Waste Tyres, Green Waste
- VZ950DK is suitable for: Aluminium, White Goods, Cars and Light Scrap and Engine Blocks

 13m x 5.7m x 4.3m  38,500 kg



Volvo Penta TAD 883 VE – 320hp

EuRec INFINITY 750

- Quick change cassette frame with Paddle or T-Knife shafts in synchronised and asynchronous configurations
- Two tilting hoppers to maximise material throughput and machine’s performance
- Hooklift mount and drawbar for excellent mobility and easy transport
- Wide 1.2m discharge conveyor with overbelt magnet for metal separation
- Intelligent shaft configuration system allows operators to adapt quickly to different materials, maximising efficiency and reducing downtime across varied applications
- Suitable for: Commercial Waste, Waste Wood , Green Waste, Paper and Cardboard

12m x 2.5m x 2.6m 16,500 kg



Volvo Penta TAD 1183 VE - 430hp

EuRec ULTIMA 850

- Quick change cassette frame with Paddle or T-Knife shafts in various configurations
- Hydraulically damped side combs to minimise blockages and pressure on the shredder
- Hydraulically lowerable breaker bar for easier shaft changes in synchronised configurations
- 1.2m discharge conveyor with overbelt magnet for metal separation
- Available with Diesel Volvo Penta or Electric drive options
- Suitable for various waste types: commercial, rubber, wood, green waste, paper, cardboard, trunk wood, and roots

12.6m x 2.5m x 3m 23,500 kg



950NF John Deere JD 18 - 908hp

*950NFE John Deere JD 18 - 908hp

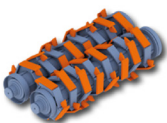
EuRec FERRO 950NF / *950FE (Metal Version)

- Quick change cassette frame with Paddle or T-Knife shafts in various configurations
- Integrated magnetic drum to separate ferrous and non-ferrous materials
- Touch-screen control for adjusting rotation speed, belt speed, and monitoring errors
- Demand-oriented fan control system minimises dust and noise, ensuring optimal performance
- 950NF is for commercial waste, rubber, tyres, CFRP/GFRP waste, waste wood, wooden railway sleepers, and aluminium
- 950FE is for concrete rubble, concrete railway sleepers, cars, light scrap, engine blocks, and white goods

16.4m x 3m x 3.6m 49,000 kg

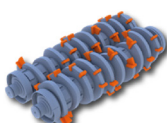
15.6m x 6.7m x 3.6m 53,000 kg

Paddle Shafts



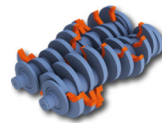
The best choice for commercial waste, including: rubber, waste tyres, natural and waste wood, paper and cardboard packaging

Metal Shafts



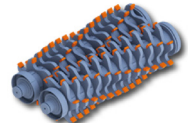
These durable shredding shafts are mainly used for automotive and light scrap treatment

Concrete Shafts



Using crushing shafts, rather than cutting, is ideal for managing construction and demolition waste

Star Shafts



Reliable performance with flexible application options for versatility



SLOW SPEED SHREDDER LINE



Doppstadt INVENTHOR 6.2

- Variable power transmission via patented VarioDirect Drive for optimal shredding
- Convenient loading using a wheel loader or excavator, with removable hopper extensions
- High capacity for demanding applications
- Flexible configurations: electric, semi-trailer, trailer chassis, or track-mounted, with discharge conveyor lengths of 4.9m and 7m
- Moderate operating costs, high machine uptime, quick maintenance recovery, and enhanced safety

Suitable for commercial, industrial, green waste, and more.

MTU 6R1000 – 428hp

12m x 2.5m x 4m

27,500 kg



Doppstadt INVENTHOR 9

- Quick-change cassette frame with Paddle or T-Knife shafts in synchronised or asynchronous setups
- Hydraulically damped side combs reduce blockages and pressure on the shredder
- Hydraulically adjustable breaker bar for easy shaft changes in the synchronised configuration
- 1.2m discharge conveyor with an overbelt magnet for effective metal separation
- Suitable for: Commercial Waste, Rubber and Tyres, Waste Wood, Green Waste, Paper and Cardboard, Trunk Wood, and Roots

MTU 6R 1300 - 530hp

16.7m x 3m x 3.6m

35,000 kg

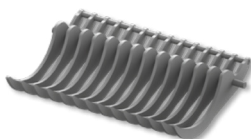
SHREDDING WITH DOPPBASKET.

Key features include:

- Material shredding to a defined grain size in one step
- Easy adaptation with simple screen basket removal and assembly
- Self-protecting basket system that opens to prevent contamination
- High durability with wear-resistant steel construction
- Future-proof design that can be retrofitted to existing machines

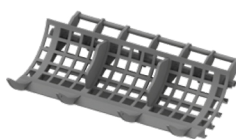


COMB BASKET



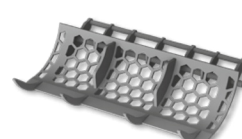
- Shredding without unwanted oversizes
- Recommended applications: waste and green waste
- Special applications: mattresses, tyres, carpets, nets, plastic pipes

WASTE WOOD BASKET



- Shredding to defined grain size
- Various mesh sizes available
- Recommended application: waste wood

HEXAGON BASKET



- Shredding to defined grain size
- Various mesh sizes available
- Recommended applications: waste and plastics



AK RANGE - GRINDER LINE



MTU 6R1000 – 310hp

Doppstadt AK 315

- Compact, efficient performance ideal for smaller sites and versatile applications
- Stage V engine technology delivering reliable power with low emissions
- Interchangeable screening baskets for flexible control of output size across materials
- Adjustable flail system with replaceable tips for effective shredding and contaminant resistance
- Load-sensing infeed for smooth operation and consistent throughput
- Lowerable discharge conveyor for quick setup and easy maintenance access
- Suitable for: Green waste, Bio waste, Wood waste and Pallets

13m x 2.1m x 4m 16,000 kg



MTU 6R 1300 - 530hp

Doppstadt AK 565 / 565K / 565PLUS

- Efficient, all-round performance ideal for a wide range of applications and operators
- Contaminant-resistant flail system with load-sensing control for smooth, consistent shredding
- Stage V compliant engine delivering reliable power with low emissions
- 7.5m discharge conveyor with over 5m stockpiling height for flexible site setup
- Flexible output control with interchangeable screening baskets
- Suitable for: Green waste, Bio waste, Wood waste, and Pallets

14m x 3m x 5.2m 29,000 kg



MTU 6R 1500 - 652hp

Doppstadt AK 640K / 640SA

- Designed for maximum throughput in large-scale operations
- Heavy-duty flail drum system for aggressive shredding of tough materials
- High-performance Stage V engine for exceptional power
- Long discharge conveyor for efficient stockpiling and continuous workflow
- Precision sizing control with interchangeable screens for exact output
- Suitable for: Wood waste, Biomass, Green waste, and Pallets

16m x 3m x 5.2m 32,500 kg



SM RANGE - TROMMEL LINE



DEUTZ TCD 2.9 L4 – 75hp

Doppstadt SM 518.2

- Compact and highly mobile design ideal for smaller sites and quick setup
- Efficient screening performance with reliable, consistent output
- Fuel-efficient Stage V engine for low running costs and reduced emissions
- User-friendly operation with simple controls and easy maintenance access
- Flexible drum options to suit different materials and output requirements
- Suitable for: Waste and Raw materials, Compost, Earths, Light construction waste, Wood, Biomass, Sand and Gravel

14.6m x 7m x 3.4m 17,000 kg



DEUTZ TCD 3.6 L4 - 116hp

Doppstadt SM 620.2 / 620.2K / 620.2 SA

- Tracked mobility for maximum flexibility across challenging site conditions
- High throughput performance for medium to large-scale operations
- Powerful Stage V engine delivering reliable screening in demanding environments
- Robust trommel design for consistent, high-quality material separation
- Quick-change drum system for adaptable screening applications
- Suitable for: Waste and Raw materials, Compost, Earths, Light construction waste, Wood, Biomass, Sand and Gravel

15.3m x 7.1m x 3.6m 24,000 kg



DEUTZ TCD 2.9 L4 - 75hp

Doppstadt SM 620.3

- Enhanced screening efficiency with upgraded drum and material flow design
- High-capacity output ideal for continuous processing operations
- Optimised fuel consumption with modern Stage V engine technology
- Improved accessibility for fast maintenance and reduced downtime
- Versatile drum configurations for precise material sizing
- Suitable for: Waste and Raw materials, Compost, Earths, Light construction waste, Wood, Biomass, Sand and Gravel

15.7m x 7m x 3.5m 19,000 kg



Deutz TCD 3.6 L4 - 85hp

Doppstadt SM 720.2 SA / 720.2 SA PLUS

- Maximum throughput screening built for large-scale, high-volume operations
- Extra-large trommel drum for superior separation and productivity
- Heavy-duty construction designed for continuous, demanding use
- High-performance engine delivering power and reliability on big jobs
- Advanced material handling for smooth, efficient processing
- Suitable for: Waste and Raw materials, Compost, Earths, Light construction waste, Wood, Biomass, Sand and Gravel

17m x 7m x 4m 24,000 kg



FOREST LINE

All woodchippers are customisable and available in various configurations, including tracked, wheeled, PTO-driven, electric, single axle chassis, and more.



 **John Deere - 300hp**
Up to 100m³ per hour

UFKES Greentec 942

- Infeed opening: 620mm x 710mm (24" x 28")
- Max log size: 550mm (22")
- Multiple screen sizes available
- Powerful top roller efficiently processes branches and heavy logs
- Higher infeed design with integrated hydraulic motor eliminates openings, ideal for chipping large quantities of branches
- Optional features: closed infeed chain, wood crane, foot control, and radio remote

 5m x 2.2m x 5m

 8,250 kg



 **John Deere - 425hp**
Up to 150m³ per hour

UFKES Greentec 952 MEGA

- Infeed opening: 750mm x 1450mm (30" x 57")
- Max log size: 550mm (22")
- Palfinger C45F84 Wood crane Reach 8.4 metres. With TG 22 4-Teeth grapple rotator
- The drum has 4 knives with a 25mm overbite producing uniform wood chips
- Optional: Worm wheel for the discharge chute swivel, preventing dust settling and maintenance

 7.4m x 2.5m x 5.2m

 11,500 kg



 **John Deere - 425hp**
or 684hp Up to 165m³ per hour

UFKES Greentec 962 Tracked

- Infeed opening: 750mm x 1450mm (30" x 57")
- Max log size: 650mm (26")
- Solid blades adjustable to 34mm for large wood chips with minimal dust
- Two infeed rollers reduce dead space and grip material for uniform results
- Designed for heavy-duty biomass, timber, and roadside clearance
- Optional features: anvil knife variations, quick change/solid fixed blades, closed infeed chain

 6m x 2.5m x 5.2m

 13,000 kg



PARK LINE

*All Woodchippers are customisable and can come in many configurations such as: Tracked, Wheeled, PTO-Driven, Electric, Single axle chassis and much more.



 **Hyundai D34 - 140hp**
Up to 40m³ per hour

UFKES Greentec CHEETAH 30

- Infeed opening: 320mm x 3000mm (12" x 23")
- Max log size: 450mm
- The Cheetah 30 is ideal for small contractors needing a professional, easy-to-tow wood chipper
- Powerful top roller handles branches and heavy logs effectively
- Higher infeed with integrated hydraulic motor simplifies operation, making it suitable for chipping large quantities of branches
- Optional features: closed infeed chain, wood crane, foot control, and radio remote

 **4m x 1.7m x 3.3m**

 **4,100 kg**



 **Hyundai D34 - 140hp**
Up to 40m³ per hour

UFKES Greentec JAGUAR 40

- Infeed opening: 400mm x 600mm
- Max log size: 550mm
- Palfinger C45F84 Wood crane. Reach 8.4 metres. With TG 22 4-Teeth grapple rotator
- Powerful chip discharge from 100-150m³ per hour
- The drum has 4 knives with a 25mm overbite producing uniform wood chips
- Optional: Worm wheel for the discharge chute swivel, preventing dust settling and maintenance

 **4m x 2m x 3.6m**

 **4,500 kg**

INDUSTRIAL LINE



 **Volvo Penta TAD 1385 VE - 908hp**

UFKES Greentec Ragnartech 9400/9700

- Infeed opening: 1422mm x 1016mm (56" x 40")
- Max log size: 550mm
- Palfinger C45F84 Wood crane. Reach 8.4 metres. With TG 22 4- Teeth grapple rotator
- Powerful chip discharge from 100-150m³ per hour
- The drum has 4 knives with a 25mm overbite producing uniform wood chips
- Optional: Worm wheel for the discharge chute swivel, preventing dust settling and maintenance

 **11m x 3m x 4.2m**

 **35,000 kg**



 **John Deere - 900hp**

UFKES Greentec Panthera

- Infeed opening: 1000mm x 2140mm (39" x 84")
- Max log size: 900mm
- Direct-flow system funnels chips to the blower for smooth discharge
- Quiet operation, minimising noise levels during use
- Ergonomic operator control using a comfortable wood crane feed
- Low-maintenance construction, optimal for heavy-duty use
- Optional: Modular design, mounting options for different platforms

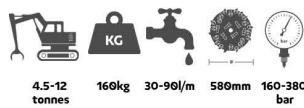
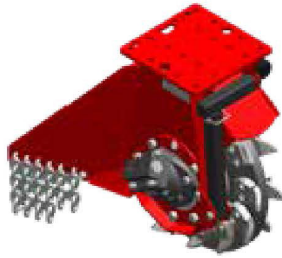
 **Dependent on configuration**

 **Dependent on configuration**

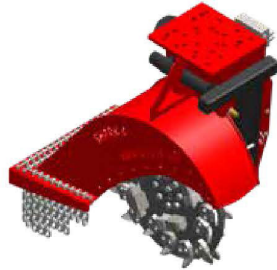


HYDRAULIC STUMP GRINDERS

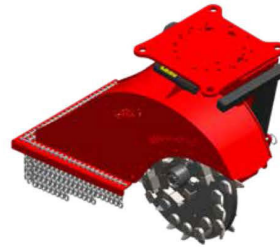
Shark 4



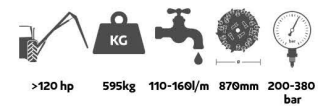
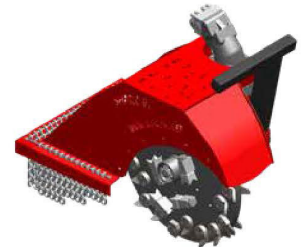
Shark 6



Shark 8



Shark 8 Compact



	4-50	4-95	6-65	6-100	6-130	8-140	8-229V	8C-140
Flow rate l/min (litres per minute)	30-50	60-90	50-65	75-100	100-130	110-160	80-235	110-160
Excavator weight (tonnes)	4.5-7.5	6-12	5.5-7.5	7-9	10-14	13-18	15-28	13-18
Grinding wheel diameter (mm)	580	580	660	660	660	870	870	870
Grinding wheel thickness (mm)	105 (25)	105 (25)	105 (25)	105 (25)	105 (25)	120 (40)	120 (40)	120 (40)
Teeth	2 x 12	2 x 12	2 x 16	2 x 16	2 x 16	2 x 22	2 x 22	2 x 22
Weight (kg)	160	160	320	320	320	700	740	595
Operational pressure (bar)	160-380	160-380	160-380	160-380	160-380	200-380	200-420	200-380
Operational disc speed (rpm)	1550	1550	1450	1450	1450	1150	1150	1000
Hydraulic swivelled 270°			Option	Option	Option	Option	Option	Option
Cutting teeth on side of grinding wheel			Option 4x	Option 4x	Option 4x	Option 6x	Option 6x	Option 6x



Shark 4

- Twin swivelling cylinders deliver precise and efficient grinding in both directions
- Hydraulic lifting system enables extra-deep grinding while maintaining a compact transport position
- Integrated dozer blade provides added stability during operation and can be removed for maximum grinding depth



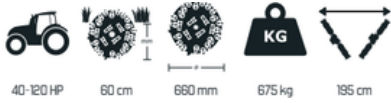
Shark 6 & 8

- Robust, low-maintenance driveline with oil-bath main shaft ensures longevity and reliability
- Durable hydraulic motor with claw coupling enables efficient power transfer and minimises wear
- Protected hose routing enhances safety and reduces damage risk in tough environments
- Reinforced housing with double-row heavy-duty chains minimises flying debris for safer operation
- Heavy-duty frame design facilitates effective ground raking and site clearance

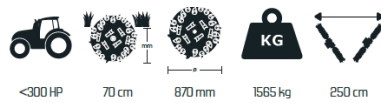
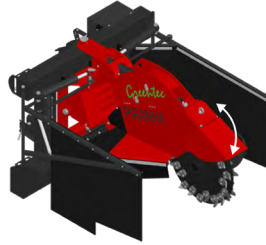


PTO STUMP GRINDERS

Piranha 6



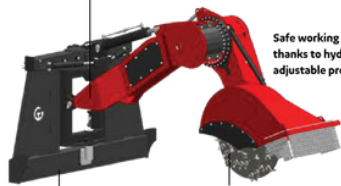
Piranha 8



GREENTEC	PIRANHA 8	PIRANHA 8 HP
Grinding wheel diameter (mm)	870	870
Grinding wheel thickness (mm)	120 (40)	120 (40)
Teeth	1 x 22	2 x 22
Weight (kg)	1565	1565
L x W x H (cm)	230 x 175 x 150	230 x 175 x 150
Swivelling range (cm)	250	250
Telescopic (cm)	40	40
Above ground (cm)	50	50
Below ground (cm)	70	70
Tractors (hp)	≤ 200 hp	≤ 300 hp
3-point linkage cat.	2-3	2-3

Piranha 10

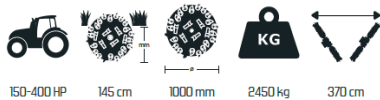
Central driveline for long PTO service life



Safe working and transporting thanks to hydraulically adjustable protective cover

Dozer bar with wear strip

Grinding wheel Ø 1000 mm for easy deep grinding



GREENTEC PIRANHA 10

Power requirements (HP)	150-400
Grinding wheel diameter (mm)	1000
Grinding wheel thickness (mm)	120 (40)
Teeth	2 x 28
Weight (kg)	2450
L x W x H (cm)	260 x 238 x 267
Swivelling range (cm)	370
Length first arm (cm)	200
Length second arm (cm)	130

Max. grinding distance from swivelling point (cm)	380
Above ground (cm)	180
Below ground (cm)	145



Joystick remote control in compact casing including 4 metre cable for proportional control of all functions.



Standard electric joystick-control including 4 metre cable



Standard electric joystick-control with variable speed control including 4 metre cable



3-Point Linkage Stump Grinders

- Mechanical drive
- Large swivelling range, minimum wear, drive runs through the heart of the machine
- Safely operated from the tractor by electric remote control
- Deep grinding, thanks to our large grinding wheels with compact drive unit
- Low maintenance driveline, main shaft in oil bath
- Tractor and machine protected against overload, drive is equipped with pawl clutch
- 100% power transmission, or completely free, no slippage, minimal wear
- Grinding wheel driven from one side only, allows easy removal of winding calamity



 CAT 4.4 - 96 kW

Barford LTF80 Tracked Low Level Conveyor

- 80ft x 48” tracked low-level conveyor for efficient bulk material handling
- Twin gearbox drive ensures consistent and reliable belt performance
- Heavy-duty discharge belt for high throughput applications
- Hydraulic slew hubs allow flexible on-site positioning
- Hydraulic feeder legs for quick set-up and enhanced stability
- 18m³ hopper capacity for increased material intake and reduced loading cycles

 23.4m x 4m x 8.8m

 35,280 kg



 CAT 3.6 - 100 kW

Barford Tracked Bin Feeder: BF7048M

- 70ft x 48” tracked bin feeder designed for controlled material flow
- Twin drive discharge belt for smooth and even output
- Integrated reversible mulch auger for greater material versatility
- Hydraulic slew hubs allow flexible on-site positioning
- Galvanised legs for durability in demanding environments
- Electric automation controls with dog lead operation for safe and simple use

 21m x 2.8m x 8.2m

 18,000 kg



 CAT 2.8 Turbo Engine - 55 kW


Barford Tracked Conveyor with mulcher hopper: TR8048

- 80ft x 48” tracked conveyor for high-capacity stockpiling
- Reversible hydraulic auger attachment for flexible material processing
- Twin drive system delivers powerful and reliable performance
- Hydraulic slew hubs allow flexible on-site positioning
- Hydraulically adjustable conveyor height for operational flexibility
- Fitted with a turbo engine, hydraulic oil cooler, and central greasing system for reduced maintenance

 21.8m x 2.3m x 10m

 15,000 kg



 CAT 4.4 - 74 kW

Barford BF4048 Tracked Pugmill

- Advanced electronic flow metres regulate water, additives, and emulsions with precision
- On-board computer system stores up to 20 mix recipes for fully automated production
- Automatic shut-down prevents production errors if material supply is interrupted
- Load cell-mounted sand and cement hoppers ensure consistent mix ratios
- Fully tracked chassis for excellent on-site mobility
- Large 400L fuel tank supports extended operating periods

 17m x 2.3m x 4m

 12,000 kg

DUST SUPPRESSION



Dust Cube Tornado

- High-output dust suppression for medium to large-scale operations
- Efficient water usage with powerful mist projection
- Wide-area coverage for effective airborne dust control
- Durable design built for harsh site conditions
- Quick set-up with flexible power supply options
- Suitable for: Demolition, Quarries, Recycling, Shipyards, Crushing & Screening

Diesel Generator or 400v Electricity

6m x 2m x 2.6m

1,500 kg



Dust Cube Typhoon

- Maximum performance dust suppression for large industrial sites
- Long-range misting for extensive area coverage
- Optimised water efficiency without compromising output
- Heavy-duty construction for continuous operation
- Versatile power options for site flexibility
- Suitable for: Quarries, Ports, Recycling Facilities, Bulk Handling, Crushing & Screening

Diesel / Petrol Generator or 240v Electricity

2m x 1.4m x 2m

850 kg



Dust Cube Tempest

- High-performance dust suppression for demanding environments
- Low water consumption for cost-efficient operation
- Targeted misting for precise dust control at source
- Flexible power options to suit site requirements
- Robust, low-maintenance design for reliability
- Suitable for: Demolition, Quarries, Recycling, Shipyards, Crushing & Screening

Diesel / Petrol Generator

3.3m x 1.5m x 2m

750 kg



Dust Cube Storm Mini

- Compact unit delivering effective dust suppression
- Ultra-low water usage for maximum efficiency
- Targeted short-range control for confined areas
- Small footprint ideal for restricted job sites
- Plug-and-play system for quick setup
- Suitable for: Demolition, Quarries, Recycling, Shipyards, Crushing & Screening

Petrol Generator

3m x 1.3m x 1.5m

392 kg

DIESEL INDUSTRIAL VACUUM SYSTEMS

We offer a comprehensive selection of hoses, fluidizers, attachments, and accessories tailored for all industrial vacuum products.



 Diesel Euro Stage V - 74hp

Sibilia DragonFly 40

- High-powered vacuum for heavy-duty industrial use
- Towable for on-site mobility
- Discharges into bulk bags or skips efficiently
- Quiet, user-friendly operation with low maintenance
- 55 kW output for maximum suction performance
- Suitable for: Cement Plants, Quarries, Steel Plants, Recycling, Shot Blasting, Media Recovery

 5.1m x 2.2m x 2.4m  3,450 kg



 Diesel Euro Stage V- 48hp

Sibilia Colibri

- Compact, all-in-one vacuum unit
- Lightweight 2.5 tonne design for easy transport
- Simple operation with minimal training required
- Low-maintenance system for high uptime
- Versatile performance across multiple industries
- Suitable for: Cement Plants, Quarries, Steel Plants, Recycling, Contracting, Shot Blasting

 2.7m x 1.4m x 2.1m  1,500 kg



 Diesel Euro Stage V - 59hp

Sibilia S9D & 2m³ Separator

- Compact and powerful industrial vacuum unit
- Towable and forkliftable (1.8 tonne) for flexibility
- Available in diesel (44 kW)
- Works with external pre-separators or hoppers
- Efficient material handling and separation
- Suitable for: Quarries, Shipyards, Cement Plants, Power Plants, Shot Blasting, Media Recovery

 1.8m x 1.1m x 2.1m  1,640 kg



 Diesel Euro Stage V - 250 kW

Sibilia S45D

- 250 kW diesel driven machine
- Truck or trailer mounted
- Mobile powerful solution
- Different tank sizes and construction
- Simple to use operating system
- Suitable for: Quarries, Shipyards, Cement Plants, Power Plants, Cleaning Contractor

 Dependent on configuration  Dependent on configuration

ELECTRIC INDUSTRIAL VACUUM



1.5m x 1.2m x 2.4m 660 kg

Dupuy TANKVAC

- High suction performance for fine and heavy dust materials
- Direct drive system for silent, maintenance-free 24/7 operation
- Available in 12.5 kW or 17.3 kW electric configurations
- Pneumatic cylinder prevents internal dust build-up
- Large 1000L tank with integrated level sensor
- Designed for continuous industrial use in demanding environments



1.6m x 1.6m x 2.3m 950 kg

Sibilia F150

- High-performance unit for heavy industrial duty applications
- Reliable 15 kW side channel pump for consistent suction
- Large 1m³ hopper capacity for bulk material handling
- Top discharge design for efficient big bag loading
- Advanced filtration with automatic cleaning system
- Ideal for fixed systems and process integration



2m x 1m x 2m 1,045 kg

Sibilia S22

- High vacuum combined with strong airflow performance
- Powerful electric (55 kW) drive for reliable, continuous operation
- Large 1000L hopper or skip for high-volume collection
- Flexible discharge options including big bag and process systems
- Heavy-duty filtration for fine dust applications
- Suitable for: Quarries, Shipyards, Cement Plants, Power Plants



2.7m x 1.7m x 2.5m 2,830 kg

Sibilia S20

- High vacuum performance with strong airflow for industrial cleaning
- Powerful electric drive for reliable, continuous operation
- Compact design with excellent manoeuvrability on site
- Integrated hopper for efficient material collection and discharge
- Heavy-duty filtration system for fine dust applications
- Suitable for: Quarries, Shipyards, Cement Plants, Recycling Facilities



Machinery Service and Parts

Expert Support Across the UK & Ireland

Our Guarantee

At Doyle Machinery, we provide high-quality spare parts and excellent after-sales service, offering lifelong support. Our Service and Parts Department assists with technical support, machine maintenance, breakdown diagnosis, repairs, and operator training, with engineers positioned across the UK and Ireland for prompt service.

We maintain direct communication with OEM factories to ensure a stock of quality parts and keep customers informed about orders.

Our Comprehensive Services



On-Site Repairs

Stationed across the UK and Ireland, our engineers provide prompt and efficient on-site repairs to minimise downtime and keep your operations running smoothly.



Scheduled Maintenance

Regular maintenance services to ensure your machinery remains in optimal condition, preventing unexpected breakdowns.



Parts Replacement

Quick and reliable parts to ensure your machinery is always equipped with the necessary components.



Ongoing Support

Contact our office for assistance from the service and parts department, ensuring prompt help to get you back up and running, even during downtimes.



What Our Customers Say



The after-sales and service support from Doyle Machinery has been excellent. Their team has been proactive, responsive, and genuinely committed to helping us keep the machine performing at its best. That reliability allows us to maintain our own high standards of service for our customers.

Alan, MD of All Aspect Tree Care

The team at Doyles boast an extensive infrastructure and parts availability, along with several mechanics on the road to support our in-house team when necessary knowledge, support, and training provided by Doyle have been invaluable.

Glenn Turner, MD of R2 Consulting & Contracting Ltd

The training provided by Doyle Machinery was thorough and practical, ensuring that our team could utilize the machine to its fullest potential. From the initial enquiry to post-purchase support, the process with Patrick King and Doyle Machinery has been seamless and professional.

Tom Exley, MD of The DP Group

Our committed team is prepared to provide you with expert assistance and support, ensuring your machinery runs at its optimal performance. For more information, feel free to reach out to our office today

UK:
+44 (0) 3330 4333 22 | info@doylemachinery.co.uk

Ireland:
+353 (0) 45 813133 | sales@doylemachinery.ie

ACCREDITED MEMBERS OF:



BRITISH METALS RECYCLING ASSOCIATION

The British Metals Recycling Association is a trade association representing 300+ organisations in the UK's metal recycling sector.



CHARTERED INSTITUTION OF WASTE MANAGEMENT

The Chartered Institution of Waste Management is a professional body for the waste management industry in the United Kingdom and other countries.



REA

The REA is the UK's largest renewable energy and clean technology body, representing around 500 member companies.



WOOD RECYCLERS ASSOCIATION

The Wood Recyclers Association (WRA) was established in 2001 to represent the wood recycling and reprocessing sector in the UK.



FORESTRY CONTRACTING ASSOCIATION

The Forestry Contracting Association (FCA Membership Ltd) is the leading trade association within UK forestry and wood related industries.



CONFOR (CONFEDERATION OF FOREST INDUSTRIES)

Confor's goal is to assist sustainable forestry and wood businesses by engaging in politics, promoting the market, and enhancing members competitiveness.



UK PORTS

UK Ports support various sectors such as Freeports, Marine, Renewables, Shipping, Training, Transport, and Research. They also promote sustainable technologies like Hydrogen.



AVETTA

Avetta ensures that every workplace is safe and sustainable by building stronger relationships with clients and suppliers.



FORS

FORS is a voluntary accreditation scheme for fleet operators aiming to improve standards in safety, efficiency, and environmental protection.



RHA - SILVER MEMBERSHIP

The RHA is a member-led trade association supporting people and businesses in the road transport industry.



Southern Depot

+44 (0) 3330 433322

Doyle Machinery Limited, Long Lane Farm, Ascot Road,
Holyport, Maidenhead
SL6 3LG

Northern Depot

+44 (0) 3330 433322

Unit 1-4 Wentworth Way, Wentworth Industrial Park,
Tankersley, Barnsley
S75 3DH

Ireland Depot

+353 (0) 45 813133

Doyle Machinery, Unit 42, Monread Business Park, Monread Road,
Naas, County Kildare,
W91 RC6E

Doyle Machinery South Africa PTY Ltd

+27 66273 25622

Populier Ave, Fairy Glen, Worcester,
South Africa

