

Cut end hose & couplings

Corrugated cut end hose and coupling system is an exceptionally abrasion resistant material handling hose suitable for suction and delivery applications. This versatile system allows the hose to be cut to the required length and fitted with our reusable couplings on site.

- The system uses deep corrugation and allows positive clamping location which greatly reduces downtime during hose fitting.
- A range of liner material for transporting of wide range of media.
- The flexible CAVLEX hose system allows all visual inspections; unlike steel pipes no additional protective coating is required for outdoor use.
- All parts are easy to install, no specially trained staff or special tools are.
- In order to significantly extend service life the hose can be rotated along its axis, by loosening the flange bolts. It is especially beneficial with dry media on bends, where the hose is subject to high levels.

Hose article	Inside diameter		Outside diameter	Wall thickness	Working pressure	Burst pressure	Min. bending radius	Hose weight	Max. avail. length
	ins	mm	mm	mm	bar	bar	mm	kg/m	m
IR12-51	2	51	76.27	12.6	10	30	310	4.68	61
IR12-63	2.5	63	85.67	11.3	10	30	380	5.07	61
IR12-76	3	76	110.07	17.0	10	30	460	8.27	61
IR12-102	4	102	132.47	15.2	10	30	620	9.56	61
IR12-127	5	127	157.47	15.2	10	30	770	11.54	61
IR12-178	6	152	186.07	17.0	10	30	920	14.78	61
IR12-152	7	178	212.37	17.2	10	30	1070	17.16	12
IR12-203	8	203	238.39	17.7	10	30	1220	19.51	12
IR12-254	10	254	288.04	17.0	10	30	1530	22.59	12
IR12-305	12	305	344.94	20.0	10	30	1830	30.40	12
IR12-356	14	356	405.83	24.9	10	30	2140	46.22	12
IR12-406	16	406	463.04	28.5	10	30	2440	59.56	12
IR12-456	18	456	513.90	28.9	10	30	2740	78.66	40
IR12-508	20	508	565.90	28.9	10	30	3050	87.00	40



IR12-60 Pneumatic or hydraulic transport of abrasive materials

Heavy duty cut end type hose for transport of abrasive materials in the mineral processing industry, coal refinement plants, power plants and in the steel and cement industries.

Temperature range: -35 °C / +70 °C.

Tube: NR/SBR, black, antistatic, abrasion-resistant. 60-65 Shore A.

Reinforcement: Textile wrapped, zinc plated steel wire helix.

Cover: CR, black, corrugated, resistant to abrasion, oil, weather and seawater, cloth impression, electrically conductive.

Couplings: All couplings have a standard PN10 hole arrangement with 6 mm rubber gasket.

IR12-40 Transport of abrasive slurries

Heavy duty cut end type hose for transport of abrasive slurries in mining and quarrying.

Temperature range: -35 °C / +70 °C.

Tube: NR/BR, black, antistatic, abrasion-resistant. 40-45 Shore A.

Reinforcement: Textile wrapped, zinc plated steel wire helix.

Cover: CR, black, corrugated, resistant to abrasion, oil, weather and seawater, cloth impression, electrically conductive.

Couplings: All couplings have a standard PN10 hole arrangement with a 6 mm rubber gasket.

IR12-FD Transport of fatty food materials

Suction and delivery hose for the transport of fatty food liquids. The lining and cover meet FDA requirements.

Temperature range: -35 °C / +95 °C.

Tube: White nitrile rubber (NBR), non-toxic, non-tainting. FDA 177.2600 compliant

Reinforcement: Textile wrapped, zinc plated steel wire helix.

Cover: CR, black, corrugated, resistant to abrasion, oil, weather and seawater, cloth impression, electrically conductive.

Couplings: All couplings have a standard PN10 hole arrangement with 6 mm rubber gasket

IR12-AFD Pneumatic transport of abrasive food materials

Suction & delivery hose for dry bulk materials such as grains, flour, sugar, beans, dry pharmaceuticals, and food starch. Tube lining and cover meet FDA sanitary standards and assure easy cleaning.

Temperature range: -35 °C / +80 °C.

Tube: NR, tanned, abrasion resistant, food quality (antistatic)

Reinforcement: Textile wrapped, zinc plated steel wire helix.

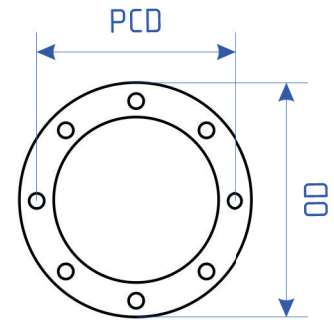
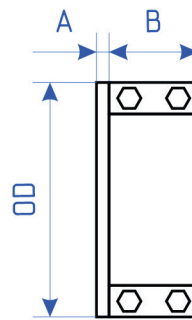
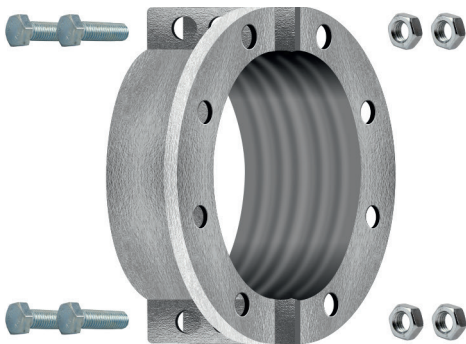
Cover: CR, black, corrugated, resistant to abrasion, oil, weather and seawater, cloth impression, electrically conductive.

Couplings: All couplings have a standard PN10 hole arrangement with 6 mm rubber gasket

Couplings

High grade aluminium clamps with PN10 drilling. Use for our corrugated hose type IR12.

Aluminium clamp



Coupling article	Suitable hose		Outside diameter	Coupling PCD	A lenght	B lenght	Coupling weigth
Nº	ins	mm	mm	mm	mm	mm	kg
C001.S051	51	2	185	145	13	70	2
C001.S063	63	2.5	185	145	13	70	2
C001.S076	76	3	200	160	13	70	2
C001.S102	102	4	220	180	15	65	2.5
C001.S127	127	5	250	210	15	85	4
C001.S152	152	6	285	240	18	95	5
C001.S178	178	7	315	210	20	108	6
C001.S203	203	8	340	295	20	130	7
C001.S254	254	10	395	350	25	145	9
C001.S305	305	12	445	400	27	165	11
C001.S356	356	14	505	460	28	165	16
C001.S406	405	16	565	515	28	180	17
C001.S456	456	18	615	565	20	330	44.5*
C001.S508	508	20	670	620	20	330	50*

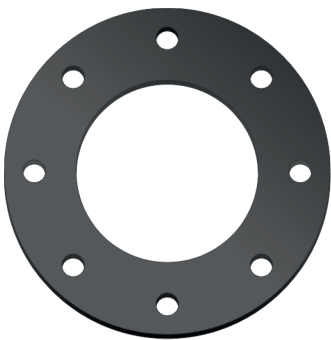
* Galvanized steel

Tapered & flat rubber gaskets

For use with our IR12 cut end hose system. Dimensions and hole drilling are suitable for PN10.

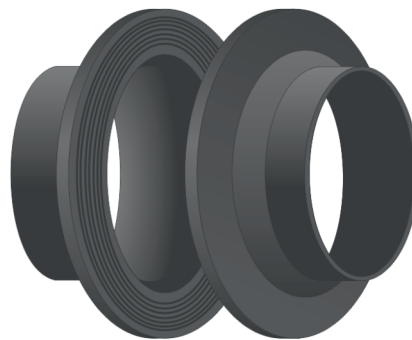
Flat rubber gasket

Standard option



Tapered rubber gasket

Use for better sealing to prevent leakage



Cut end hose system

IR12
type hose

Aluminium
clamp

Tapered
rubber gasket

1

2

3

