



Download  
the UK Care Week App to view  
the floorplan, exhibitors, and  
agenda in more detail!



20th & 21st March 2024 | NEC Birmingham

# 2024 Show Guide

[ukcareweek.com](http://ukcareweek.com) #UKCareWeek

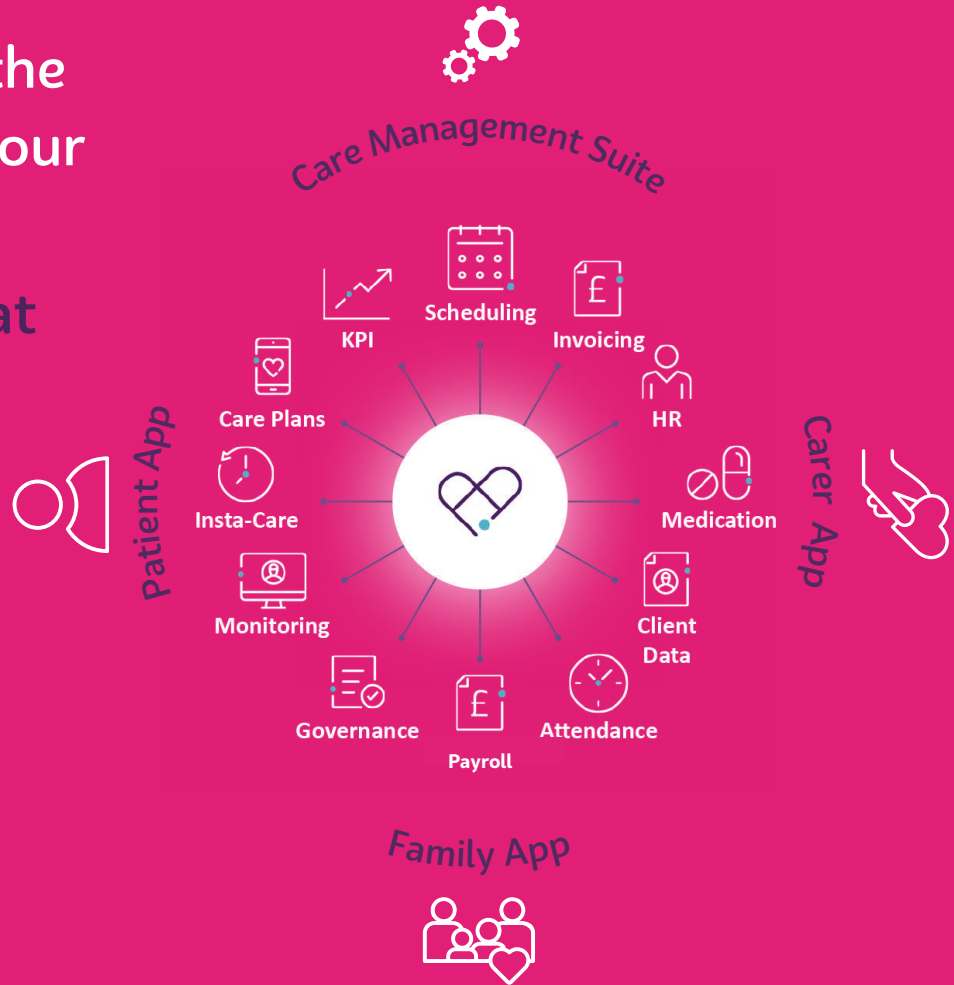


Our Sponsors:



Our system has all of the digital tools you and your team will ever need.

Visit us at stand K30 at UK Care Week 2024



OneTouch Health is an all in one digital care management platform which allows care providers to manage every aspect of their client's needs.

The OneTouch platform brings complete digital transformation to your company, resulting in stronger financial management, higher CQC ratings, overall operational cost savings and business efficiencies.

We've assisted countless companies and thousands of carers on their digital transformation journeys, and the efficiencies and benefits they've experienced in their everyday work have been truly significant.

So, you're not alone – we're here to support you every step of the way! Start your digital journey with OneTouch Health today!

# Agenda

Powered by  
 Speaksee

Keynote Stage

## 20 March 2024

10:30 11:15

**Panel discussion: Ensuring Safe Spaces: Navigating the Role of Independent Safety Monitoring in Care Homes**



Paul Farmer, Operations Director, Care Protect



Jayne Connery, Director /Founder, Care Campaign for the Vulnerable (CCFTV)



Kay Cox, CEO, Signature Care Homes

11:30 12:00

**In conversation with James Tugendhat**



James Tugendhat, CEO, HC-One

12:15 12:45

**Preparing for 2024 CQC inspections with digital care management software**



Sam Hussain, CEO, Log my Care

13:30 14:15

**Panel discussion: The endless Potential of Careers in Care**



Aneurin Brown, Managing Director, Hallmark Care Homes



Dr Jane Townson OBE, CEO, Homecare Association



Mark Topps, Director and Co-Founder, The Caring View



Professor Martin Green OBE, CEO, Care England

14:30 15:15

**Panel discussion: Squaring the circle? Building profitable and sustainable social care organisations**



Jonathan Freeman MBE, Group Sustainability Director, CareTech Group



Bhavna Keane, Health and Social Care Consultant, BKR Care Consultancy



Steven Fergus, Head of Healthcare, Barclays



Tom Spiers, Partner and co-Head of Healthcare, Addleshaw Goddard LLP

15:30 16:00

**Recognising and Responding to Compassion Fatigue**



Jayne Ellis, CEO, EF training

## 21 March 2024

10:15 10:45

**Specialist dementia training – the importance for both residents and care staff (Alzheimer's society)**



Gabby Sheedy, Senior Training and Partnerships Officer, Alzheimer's Society

11:00 11:45

**Panel discussion: Where do we go from here? Responding to the National Care Awareness Survey Findings**



Hayley Horwood, Strategic Growth Lead, Sonar



Joyce Pinfield, Vice Chair, National Care Association



Karolina Gerlich, CEO, The Care Workers Charity



Sue Jones, Director of Social Care, Institute of Social Care Management

12:00 12:30

**Collaboration in Care: why an inter-disciplinary approach is necessary in securing strength of the sector**



Laurence Geller, Chairman and Chief Executive Officer, Loveday & Co

13:00 13:45

**Keynote address from Helen Whately**



Helen Whately, Department of Health and Social Care

14:00 14:45

**An update from CQC**



James Bullion, Chief Inspector of Adult Social Care and Integrated Care, CQC

# Agenda

 Powered by  
 Speaksee

 Business Facilities  
 & Environments

## 20 March 2024

10:15 10:45

**Can AI help with fall prevention? The £2.3bn Question!**



Pradyumna Thiruvengatanathan, CEO / Founder, Earzz Limited

11:00 11:30

**Empowering People and Their Care Partners: Interdisciplinary Solutions for Healthy Ageing and Dementia Care**



Dr Junjie Huang, Senior Design Consultant, Dementia Services Development Centre



David Wilson-Wynne, Dementia Services Development Centre

11:45 12:35

**CQC Single Assessment Framework: Update**



Adam Purnell, Group Quality Manager, Basswood Care



Mark Topps, Director and Co-Founder, The Caring View

12:45 13:05

**Nourishing Lives: A New Era of Dining in Care Homes**



Professor Martin Green OBE, CEO, Care England

13:20 13:50

**What is OpenScore and Why is it a Game-Changer for providers and self-funders?**



Debbie Harris, Managing Director, Autumna

14:00 14:30

**Time to build your OUTSTANDING tribe - How to create a battle winning care team**



Jonathan Cunningham MBE, Chair & Founder, Care Managers Inner Circle

14:45 15:15

**Integrated Retirement Communities: Addressing the Ageing Population and Social Care Crisis**



Sarina Kiayani, Policy and External Affairs Manager, ARCO

15:30 16:00

**Beyond Walls: Strategies for Elevating Wellbeing for Residents and Care Staff**



Almanzo Hulbert, Key Account Manager, Innova Care Concepts

## 21 March 2024

10:15 10:45

**Automated Lateral Patient Turning - Moving & Handling Safely**



Emma Tarpey, Complex Moving & Handling Consultant, Haslar Consultancy / Wellell UK Limited

11:00 11:45

**Panel discussion: Proactive Strategies for effective Safeguarding in Care**



Jayne Connery, Director / Founder, Care Campaign for the Vulnerable (CCFTV)



Claire Webster, Practice Development Consultant SCIE



Liz Blacklock, CEO, NACAS



Thomas Tredinnick, CEO, Ally Cares

12:00 12:30

**Addressing challenges in health and social care through innovation**



Cynthia Bullock, Deputy Director - Healthy Ageing, Innovate UK

13:50 14:10

**Securing External Medications: Practical Strategies for Care Homes**



Peter Morris, Founder and CEO, Lockabox®

14:20 14:50

**Overcoming Transport Barriers. Enhancing Quality of Life for Care Home Residents.**



David Dew-Veal, Director of Strategy and Innovation, Proximo Group



# Agenda

Powered by  
 Speaksee

Digital & Technology

## 20 March 2024

10:15 10:45

**The DiSC Programme and the benefits we've seen so far**



Louise Pearson, Benefits Manager - Digitising Adult Social Care Programme (DiSC), NHS England

11:00 11:30

**Enabling Dynamic and Digital Care Delivery**



James Maynard, Product Marketing Director, Access UK

11:45 12:15

**How can you improve the safety and quality outcomes in your care home?**



Tandeep Gill, Head of Business Development, PainChek



Cheryl Baird, Orchard Care Homes

12:30 13:15

**Panel discussion: Can Artificial Intelligence care?**



Chris Papadopoulos, Principal lecturer in public health, University of Bedfordshire



Helena Zaum, Director of Business Development, Sentinel Partners



Jack White, Founder, Health Automated



Laetita Tanqueray, PhD student in sociology of law of human-robot interaction, Lund University



Lee Trueman, Commercial Director, Health Automated

13:20 13:50

**Making policy practical**



Adam Coe Cyber Security Policy Lead  
Department of Health and Social Care

14:00 14:30

**Overcoming the barriers to implementing outcomes-based lifestyle monitoring solution**



Nick Weston, Chief Commercial Officer, Lilli

14:45 15:15

**The Automation Train - How care delivery will be made safer with AI.**



Jack White, Founder, Health Automated

15:30 16:00

**Safeguarding our data in a digitising world**



Daniel O'Shaughnessy, Head of Programme Delivery,  
Digital Care Hub - Better Security, Better Care Programme

## 21 March 2024

10:15 10:45

**How is generative AI impacting the care sector?**



Katie Thorn, Project Lead, Digital Social Care

10:55 11:25

**Beyond Care; Unveiling the power of wellbeing in your care home**



Steven Embleton, Head of Product - Wellness and Learning, Person Centred Software



Jade Ellis, Wellbeing Expert Manager, Person Centred Software



Emma Farino, Product Owner, Person Centred Software

11:40 12:10

**The impact of remote care technology on care delivery**



Rob Parkes, CEO, Service Robotics

12:20 12:50

**Navigating Tomorrow's Care Landscape: An Exclusive Preview of 2024 Trends**



Andy Croudace, Director for Innovation, Advanced

13:50 14:10

**Transforming Sponsorship Through Technology**



Matthew Bond, CEO & Co-Founder, Borderless

14:20 14:50

**Hold to succeed with international recruitment ethically**



Rachael Crook, CEO & Co-Founder, LiftedCare

# Agenda



Workforce, Skills & Wellbeing

## 20 March 2024

10:15 10:45

**A workforce strategy for adult social care: from wish to reality**



Oonagh Smyth, Chief Executive, Skills for Care

11:00 11:30

**The Sexual Rights Charter for Older Adults: a useful tool for adult social care?**



Sharron Hinchcliff, Director of Equality, Diversity, and Inclusion, University of Sheffield

11:45 12:15

**Uncovered: Bad Agencies**



Dan Blake, Co-founder and COO, Florence

12:30 13:00

**Wellbeing and support for the domiciliary care workforce**



Hannah Kelly, Care Consultant, Hannah Kelly Consultancy

13:15 13:45

**An introduction to The Care Workers' Charity**



Shanna Wells, Marketing Manager, The Care Workers Charity

14:00 14:30

**Apprenticeships – Creating a skilled and caring workforce**



Kim Morrison, Head of Employer Partnerships, Woodspeen Training

14:45 15:15

**Psychological wellbeing, when working in care & responding to distressed**



Romulus Minea, Global Professional Instructor, Crisis Prevention Institute

15:30 16:00

**Practical ways to upskill and improve workforce wellbeing**



Amrit Dhaliwal, CEO, Walfinch

## 21 March 2024

10:15 10:45

**Navigating legal problems in social care**



Jenny Wilde, Partner, Acuity Law



Juliette Franklin, Legal Director - Employment Law, Acuity Law



Sabina Kauser, Partner - Immigration Law, Acuity Law

10:55 11:40

**Panel discussion: Technology for workforce wellbeing - Help or Hindrance?**



Lee Trueman, Commercial Director, Health Automated



Matthew Bond, CEO & Co-Founder, Borderless



Jack White, Founder, Health Automated



Marianne Mills, Director, 2M Training



Paula Cashmore, Founder, Achievable Care Quality Community

11:45 12:15

**Mastering the Art of Supportive Leadership: Key Tips for Team Success**



Iain Clague, CEO, The Care Connector Network

12:20 12:50

**Elevating Workplace Morale: Strategies for 2024 and Beyond**



Gemma Bullock, Business Development Director, Retinue

13:50 14:10

**Creating a succession plan that engages and supports**



Sue Jones, Director of Social Care, Institute of Social Care Management

14:20 14:50

**Workforce and wellbeing development within your business.**



Simba Rwambiwa, Managing Director, Palmlove Care Services

15:00 15:30

**Stress Defence Programme & Protocol**



Tracy Turner, Mental Health Safety UK

# Partners & Sponsors

## A BIG THANK YOU TO OUR PARTNERS & SPONSORS

### SPONSORS



### PARTNERS



# Exhibitors

## Abyss Systems Ltd M33

Our duo of care management offerings, Abyss Care Management System (CMS), our on-premises solution, and Blyssful, our new cloud-based solution, help you to plan and evidence the care that you provide, supporting you to achieve compliance within your business.

## Acuity Law G32

At Acuity Law, we like to do things a little differently. As a national law firm of trusted and dynamic experts, we deploy responsive teams to solve complex challenges to a variety of sectors. What's more, our straight-talking approach positions people at the heart of everything we do.

## Advanced M24

For over 20 years, Advanced has supported care organisations with innovative software, vital for managing workflows, costs, and regulatory compliance. Our solutions encompass care business management, payroll, and people management for residential, domiciliary, and supported living settings.

## Algeos / Levabo K21

Algeos is a family-run business with care at its heart. Algeos has retained a close partnership with leading Danish pressure care brand Levabo. Developed alongside leading wound care nurses, Levabo is a key manufacturer of innovative solutions for the prevention and management of pressure ulcers.

## Almas Industries UK Ltd K43

Ensuring the safety and security of residents, staff, and visitors is paramount within a care setting. Almas Industries and InVentry offer comprehensive solutions to minimise safeguarding concerns and reduce the risk of security incidents for both residents and staff.

## Alzheimer's Society F20

Alzheimer's Society is the UK's leading dementia charity. We're working towards a world where dementia no longer devastates lives. We do this by giving help to those living with dementia today, and providing hope for the future.

## Andor Cards H16

Offering automated payment solutions to Local Authorities, NHS Trusts, legal organisations and businesses, specifically acting in the Health & Social Care sector, our platform simplifies process, ensures a clearer audit trail & minimises administration.

## apetito L30 VIP Lounge

We believe food should be enjoyed by everyone. Packed with quality ingredients, our meals are delicious, nutritious and cater to all residents dietary needs. Our service goes beyond great food. We build genuine partnerships: helping to ensure your residents always look forward to mealtimes.

## Bibetta J52

Care Designs' professional range of bibs and clothing protectors combine elegant and dignified styling with the waterproofing functionality of a bib to keep clothes dry and clean with a smart look.

## bioperl H54

bioperl is the market leading biocidal absorbent for body fluid spills, used widely in NHS health and care services. A one-solution spill kit for all body fluid spills with EN Standard efficacy in a simple and easy to use two-step process, bioperl is available from Schulke & Mayr (UK) Ltd.

## Birdie H34

Birdie delivers all-in-one homecare management technology that is easy-to-use, motivates your team and helps your care business grow. Currently working in partnership with 1000+ brilliant care businesses across the UK. Come join the Birdie flock!

## Blaucomm L24

- Fast, reliable Internet Access with backup connections
- Full building WiFi
- Cost effective smart telephone systems without the fuss
- Nurse call alerts to smartphones

## Borderless G16

Borderless is a technology platform revolutionising hiring and sponsorship. From sponsor licence applications to your ongoing recruitment, immigration and compliance needs, our platform makes everything fast, low-risk and low-cost, enabling you to take back control and avoid expensive third parties.

## Camascope K14

Camascope's eMAR system is fully integrated with the wider health and care technology landscape. The solution is designed to flag potential medication errors and summarise medication management across a care service, supplying care teams with vital information to elevate care delivery and safety.

## Carebeans K12

We love what we do, creating innovative care management software for the care industry. Over 25 years of experience, we know the care industry like the back of our hands. There's no challenge too big or too small, and we dedicate our utmost energy to every project we take on. Every customer is unique.

## Care Check M10

Care Check, one of the leading suppliers of DBS, Media, RTW and Digital ID Checks process 250,000 plus checks per annum for over 30,000 customers

## Care Choices Ltd F12

Care Choices is a leading multi-media publisher to the social care sector. Its expanding portfolio includes publications, websites and events for senior executives in care and support, care seekers, families of children with additional needs and the practitioners who work with them.



# Exhibitors

**Care Control Systems** **J12**

We are Care Control. The market-leading NHS assured care management software. We want to support care businesses in their journey of digital transformation. We envision a world where the delivery of care is seamless, efficient, and truly person-centered.

**CareDocs** **M12**

CareDocs is the UK's leading person centred software provider for care and nursing homes. With over 15 years' experience supporting healthcare professionals to manage service user records with our point of care recording software, we are paving the way for digital transformation within healthcare.

**Care Home Management Magazine** **L14**

Only the very best advice and thought-leadership pieces make it into CARE HOME MANAGEMENT magazine, website, podcast and newsletters. Remain the first choice for care home decision-makers: use our portfolio of engaging multi-media marketing channels to generate demand and build brand awareness.

**carehome.co.uk** **L44**

Carehome.co.uk is the leading UK care home reviews website, with over 15 million visitors each year. We are number one on google for thousands of care home related jobs and services. Our account management team are dedicated to assisting our clients within the care industry.

**Care Quality Commission** **L50**

The Care Quality Commission is the independent regulator of health and social care in England. We monitor, inspect and regulate services to make sure health and social care services provide people with safe, effective, caring, well-led and responsive care, and we encourage care services to improve.

**Charles Taylor Trading** **P2**

Traditional British, handcrafted garden furniture, made in the UK and delivered fully treated and assembled.

**Checkit** **H14**

Checkit provides intelligent operations to over 350 public and private healthcare and life sciences institutions, retail, and facilities management organisations. Checkit customers include Hallmark, NHS, bp, Grifols, Octapharma, Waitrose / John Lewis Partnership, Sodexo and Center Parcs.

**Children's Air Ambulance** **G22**

The Children's Air Ambulance can support your sustainability aims with free clothing banks for your preloved items and a data wiping service for your redundant technology. Our aim is to keep your items in the circular economy for longer whilst raising vital funds to keep our service flying.

**Cirrico** **J26**

We believe business is an important platform for change, and in a future where Salesforce can be used to improve more people's quality of life. Many organisations struggle with digital transformation and we support them in creating an environment that helps them thrive utilising Salesforce.

**Cloud Doing Good** **K16**

Powerful care home accounting software. Simple, affordable. Trusted by 1 million+ users, secure at all levels. Base software donation available for qualifying non profit care homes. Implementation including private and council billing averages than 20 chargeable days.

**Connect Studio** **K32**

Do you need to increase your home occupancy? We enable our clients to do just that! Our clients see a significant uplift in occupancy when their enquiries are managed by Connect Studio. Beyond just answering calls, our service can include managing customer interactions over a wide range of channels.

**Clinical Education Academy** **L12**

The Clinical Education Academy provides high-quality education and training for health professionals, with a student-centered, patient-focused approach. We are committed to exceptional service worldwide.

**Creative Mojo LTD** **H24**

Creative Mojo provide all-inclusive craft experiences for the elderly, adults with learning and physical disabilities and mental health concerns. We specialise in working with people with dementia and also within wider community groups.

**Creed Foodservice** **K34**

We are one of the UK's leading family-owned foodservice wholesalers who specialise in supplying a large range of multi-temperature products. We truly believe in more. This is reflected company wide with our dedicated team of industry experts on hand to support with specific care sector challenges.

**Croner-i** **K42**

Deliver outstanding, compliant residential care and care at home with the help of Navigate-Care's practical tools, template documents and in-depth information. Download checklist programs, toolkits, and model documents to keep your work accurate and compliant.

**Curam Care** **K50**

Curam's innovative solution is revolutionising social care, delivering capacity, speed and savings for regular shifts or last-minute care. Choose from thousands of experienced, vetted & insured care professionals nationwide.

**Denizns** **K40**

**PRODUCT RANGE & SERVICES:**

- Modes of Recruitment
- Permanent Recruitment
- International Staffing
- Spotlight Job Roles
- HCA | Senior Carers | Nurses | Pre-RGNs/RGNS | Chefs, Cooks
- Fascinating service design!
- Standardised vetting procedure | Pre and post-sales compliance | HR file management | Legal Support

# Exhibitors

## Due Diligence Checking Ltd H52

DDC are a specialist DBS and employee background screening provider. Our fully-managed services include; DBS, right to work, digital identity and more. DDC supports organisations across the care sector to streamline their DBS checking processes. Make onboarding talent safer and faster with DDC.

## Earzz M50

Earzz listens and proactively alerts carers for critical sounds detected in resident rooms, including gasping, screaming, coughing, and also sounds of movement - like footsteps or thuds - that can help carers pre-empt a fall even before it happens, all without violating resident privacy.

## Eden Alternative J24

Transformational Care philosophy and training provider

- Focusing on:
- Inspired leadership
- Wellbeing of staff, residents and relatives
- Sustainable innovation

## Elis UK H32

Elis provides flat linen, residents clothing, laundered table linen, kitchen cloths, mats, floorcare and washroom services. Elis partners with thousands of care homes around the world; from small independent homes and hospices to large care villages.

## EF Training M14

EMOTIONAL RESILIENCE TRAINING

- RECOGNISE How stress, vicarious trauma & compassion fatigue affect wellbeing.
- RESPOND With simple sustainable strategies to use at home & work to increase emotional resilience.
- RECOVER To sustain emotional resilience as an individual, team & organisation.

## Equity Release and Mortgage Partnership G12

Equity Release & Mortgage Partnership is a leading financial brokerage. Equity release presents a viable solution, empowering homeowners to access the capital needed to invest in home modifications, home care services, or specialized equipment necessary to facilitate independent living.

## ESGO L42

ESGO revolutionises the connection between care institutions and dedicated care professionals through a secure online platform, facilitating direct communication and efficient staffing solutions.

## Exergame Solutions G52

The Tovertafel the original "Magic Table". We are TOVER UK and we are here to support you with your next investment in the support for your loved ones. Using our clinically developed game levels we can take you through a journey of immersive and relaxation to physical and motivational challenges.

## Flexi Recruits M30

Flexi Recruits is proud to present Flexi Recs, the mobile application designed to stabilize staffing for employers. Officially launching Flexi Care Consortium.

## Florence G14

Florence empowers nurses, carers and care organisations to work and learn smarter. Our app makes it fast and easy to manage your shifts, training and schedule, freeing up more time to focus on care.

## Found by Lottie K24

Found by Lottie is the UK's leading cloud-based software for the care home industry. Found offers care homes & retirement living communities powerful tools and modular solutions to effectively manage enquiries, customer relationships, networking, occupancy, finance and billing.

## Haigh M26

Haigh has a reputation for delivering reliable, innovative, efficient waste handling systems. Haigh's range of Incomaster, Panaway, and Solo machines for the disposal of waste all bring proven reduction in costs, logistics and landfill associated with yellow bagging

## Health Automated J50

In the rapidly evolving landscape of healthcare technology, "Architecture" stands out as a beacon of innovation and progress. As a groundbreaking AI-based care management platform.

## HelloFresh G30

UK's Leading Recipe Box | Fresh, Quality Ingredients | Even More Recipe Choice and Variety.

## Homecare Association Limited H10

With over 2,300 members the Homecare Association is the UK's membership body for homecare providers. Together we ensure that homecare is valued so that everyone can live well at home and flourish within their communities. Let's shape homecare together.

## ILECS Limited J22

LECS are independent lift and escalator consultants. We work with clients across the UK, providing all the help they need to effectively manage the lifts and escalators in their buildings.

## iMEDicare J14

iMEDicare are a leading UK Distributor of medical device solutions for the management of male & female urinary incontinence both in the Community (re-useable) and Acute Care (CAUTI avoidance External Catheter Device Solutions) available on NHS Prescription and NHS Supply Chain Framework.

# Exhibitors

## Inspired Inspirations J10

Elevate care with Inspired Inspirations & Tiny Tablets! Tailored tech activities boost joy & engagement in every session. Join us in redefining well-being. Institute of Health and Social

## Care Management J4

The IHSCM is the professional institute for all health & social care leaders existing solely to support its members to learn, grow, share & develop. It is an institute focused on content, peer support, & providing a platform for your voice.

## iplicit H20

Running the finances for a group of care homes is complicated and the sector is constantly evolving. Our care and nursing home finance software helps you smooth out complexity, control costs and eliminate many manual processes. iplicit works with care home groups to move on to our cloud platform.

## ITP Promedia F22

Care Home Professional provides daily industry news and insight via our website, daily news alert and social media platforms. Our monthly magazine is distributed to care home owners, directors and C-level executives and includes exclusive interviews, data and insight.

## Itransition H50

Founded in 1998 and headquartered in London, Itransition delivers software solutions that power patient care excellence:

- Telehealth 2.0 systems development
- ERP integration for back office management
- AI solutions for care processes automation

## Katacare M16

Transform your care services with Kata Care. Our expert team offers premier, hands-on consultancy and recruitment services to enhance care quality. With our nationwide network of seasoned professionals, we're your partners in excellence. Discover how we can help at [katacare.co.uk/services](http://katacare.co.uk/services).

## Lifted Talent K58

Lifted Talent helps you unlock the power of sponsored recruitment without the hassle. We match you with care workers already in the UK and overseas and manage all compliance and operations including finding housing, car and delivering life in the UK training. We even pay your Home Office fees.

## Lockabox G10

Lockabox is the proven and recommended lockable product to achieve personalised, discrete, and professional protection of external medications in residential care to comply with changing CQC fundamental standards, plus safer storage of general medications in social and domiciliary care settings.

## Log My Care K22

The platform for outstanding care management. Log my Care helps care providers allocate resources and speeds up tasks, so they can focus more on those in need. Log my Care is an NHS Transformational Directorate Assured Supplier and a Quality Partner of the Professional Record Standards Body.

## LTC Global H12

For further details come and talk to us on Stand J20.

## Marsh Commercial K52

Our team has decades of experience in the health and care sector. We provide expert advice and protection with a personal touch - insurance may not be your top priority, but you can rest assured, helping protect your business is ours.

## My Learning Cloud H44

My Learning Cloud is a blended e-Learning specialist for the Health and Social Care sector. Our tailored Learning Management System provides accredited content to empower organisations to manage and deliver higher standards of care.

## Music in Mind M32

Music in Mind uses music to improve wellbeing of people living with dementia. Through training delivered by Manchester Camerata Orchestra musicians & music therapists, the Music Champions programme empowers a growing community of paid & volunteer carers to use music to support people in their care.

## NACAS J2

The National Association of Care & Support Workers (NACAS) is the private professional body for care workers. Everyone who works as a carer or support worker is eligible to join. If you're an employer, you can become a corporate sponsor.

## National Care Association F10

National Care Association remains the most respected and established of the trade bodies due to our strong ethos of putting members at the heart of all that we do. Our reasons for engagement at any level with national associations including CQC is to ensure that our member's views are heard.

## Nestlé G40

We are the Good Food, Good Life company. We believe in the power of food to enhance lives. Good food nourishes & delights the senses. Good food also respects our planet & protects resources for future generations. Brands include Nescafe, KitKat and Cheerios.

## Nourish Care L20

Nourish Care is a digital care planning provider offering a flexible platform that can be tailored to your care service. Built with features such as custom interactions and personalised timelines, Nourish is used by 204,000 carers daily to support 320,000 people.

# Exhibitors

## OM Interactive Ltd

**G42**

OM Interactive have been designing & producing interactive projections since 2005. The Mobii Magic Surface won the UKDC Outstanding-Product Award in 2018 for its person-centred content and ability to deliver engaging activities for people at all stages of dementia.

## OnePlan

**H46**

OnePlan Electronic Call Monitoring & Care Management Software  
Most care providers tell us they are sick of spinning all the plates. They choose OnePlan because our care software is comprehensively designed with all the functionality you would need to successfully operate your care business.

## OneTouch

**K30**

We see care management software differently, Æi OneTouch works alongside your carers to enable the best provision of care. OneTouch provides a comprehensive digital foundation to let you manage the workflows and processes you need in order to run your care organisation smoothly.

## Open Road Access

**K54**

ORA provides wheelchair users with hassle-free, accessible and affordable vehicle rental. From one day, to one year, our fully flexible, personalised service helps wheelchair users get on the open road. Our all-inclusive package includes delivery, insurance, breakdown cover and collection.

## OutsideClinic

**G44**

OutsideClinic bring comprehensive, personalised eye and hearing care to customer's homes and care homes - from eye and hearing tests to delivery of glasses or fitting of hearing aids. Join us at UK Care Week to find out how we can work together to improve lives through better eye and hearing health.

## Painchek

**H31**

Our purpose is to give a voice to people who cannot self-report their pain, such as those living with dementia or Alzheimer's. PainChek is the world's first intelligent pain assessment tool, using AI & facial analysis technology.

## Pairly.com

**J54**

Pairly intends to make the search for care seamless and stress free whilst working with providers to fill their voids and support the sustainability of the sector. Pairly is the innovator in the care market place - come and see us to find out more about our road map!

## PASS

**M20**

PASS supports over 1,200 care providers daily, who benefit from best in class care planning, rostering and reporting tools, hand in hand with 24/7/365 unlimited support from our dedicated services team. All-in-one care management software right at your fingertips. [everylifetechnologies.com/pass](http://everylifetechnologies.com/pass)

## Person Centred Software

**H40**

Person Centred Software offer a Connected Care Platform with a focus on improving the lives of people in social care and solving real problems in a way that really works. Solutions include Care Planning, Medication Management, Wellbeing & Activities and Care Home Operations.

## PiPcal

**F24**

## Precision

**K20**

Recruit carers and acquire new customers by leveraging our 27-million household database. With detailed UK household data and a comprehensive care provider list, Precision ensures your message reaches the right people, at the right time, through the right marketing channels.

## Proximos

**L54**

Proximos combats the harmful spread of infection in care homes through our next generation digital contact tracing solution. By reducing infections such as Norovirus, C. diff & Flu we improve the safety and wellbeing of your setting, deliver evidence for CQC compliance and save you time and money.

## Retinue

**H22**

Retinue is the market leading provider of talent solutions to organisations with complex, shift-based workforces. We provide temporary talent, permanent talent, workforce management and consultancy services to clients spanning, NHS, private health and care, built environment and logistics sectors.

## Richardson Care

**H55**

Richardson Care provides a person-centred approach for rehabilitation, treatment and residential care for adults with an acquired brain injury or learning difficulties.

## RNIB

**K41**

Are you working in health and social care with people who have sight loss? We can provide, training, advice and information on relevant services, best practice, policy information and research.

## Salesforce

**J26**

Salesforce for Nonprofit Care provides a connected digital-first platform for whole-person care, enabling organisations such as Mental and Physical Health, Family and Youth Services, Domiciliary Care, Care Homes, and Supported and Sheltered Living to deepen relationships with a unified view of all stakeholders and service users for maximum impact.

## Sona

**L10**

Sona is a Google-backed workforce management system for social care. Sona helps organisations like Advinia Healthcare and Praxis Care save 40% in agency spend and reduce manager workload by 5 hours per week by giving employees and managers access to modern and easy to use technology.



# Exhibitors

## Speaksee G54

Inclusive Communication for the Deaf and Hard-of-Hearing using portable Speech-to-Text Microphone Devices for Real-Time Captioning

## Spearhead G34

Spearhead are a trusted supply partner for Care Home Operators, providing care home supplies you can rely on, backed by a strong supply chain, reliable delivery network and dedicated account..

## Specsavers G50

Specsavers' home visit teams provide a comprehensive eye care service to those who cannot get to an optician unaccompanied. Customers can benefit from a free NHS-funded eye test, a great selection of glasses and high standards of care from the comfort of their own home or care home.

## The Access Group H51

Access care management software provides a comprehensive suite of care solutions, giving you all the tools that you need to deliver a truly joined-up approach to quality care, with the person placed firmly at the centre. We give you the freedom to deliver connected care to every individual.

## The CARE Connector Network F14

Join the Care Connector Network - the social and educational platform for social care professionals. Connect, grow, and be supported by a community of empathetic, positive, and authentic individuals. Let's make a difference together.

## The Carer F16

The Carer is an informative print and sectors only weekly digital title for the nursing and residential care home sector, delivering latest news, views, in-depth articles, products and services and distributed to key sector decision makers Visit [www.thecareruk.com](http://www.thecareruk.com) Visit Stand F16.

## The Care Workers' Charity K10

The CWC aspires to a UK where no care worker faces financial hardship alone and where their cause is championed both in and outside of the sector.

## The Health & Safety Group H26

The Health & Safety Group is the UK's leading healthcare training provider, training over 100,000 healthcare professionals each year, in a variety of courses. We provide unrivalled UK coverage across 50+ training venues and offer flexible, cost-effective e-learning and inhouse training options.

## Thornbury Nursing Services M34

TNS Consultancy Service. We help healthcare providers: Improve patient care: Assess & optimise policies, procedures & quality Meet CQC standards: Co-create action plans, provide ongoing support Stay ahead of the curve: Use latest research & best practices Put patient safety first, contact us today.

## Training2Care P35

Training 2 CARE and Experience Training have a mission to provide the most cost effective, practical and powerful training that embeds good practice and changes lives. We are committed to improving standards of care training by focusing on unique, research-based courses.

## ViClarity G20

ViClarity is a quality and compliance software solution that helps organisations centralise multiple processes across their groups. The system is utilised by over 1000 healthcare locations to automate areas such as Compliance, Incidents/Complaints, Risk Management and more.

## Wellell L40

Wellell is a leading manufacturer of innovative medical devices, offering solutions for pressure injury prevention, beds, and moving & handling. Passionate about well-being, having helped over 3 million patients, we focus on improving clinical outcomes, helping everyone lead healthier lives.

## Wiltshire Farm Foods Professional J20

At Wiltshire Farm Foods Professional, we put the delight back into dining for people with swallowing difficulties such as dysphagia. Our industry-leading IDDSI compliant meals are trusted by over 600 UK care homes providing tasty, nutritious food for residents in the texture that's right for them.

## Woodspeen Training H30

Established over 30 years ago, Woodspeen Training provides apprenticeships and skills programmes. Woodspeen Training is passionate about providing career development and enhancement opportunities to all learners.

## Workforce.com L22

Workforce.com is on a mission to eliminate employment friction for frontline care staff. Through our journey, Carers have utilised the user-friendly and intuitive platform to streamline manual admin tasks, simplify staff scheduling, reduce agency costs, and improve staff retention and satisfaction.

## Zahara Systems L52

Zahara makes it super easy for care providers to process and pay their bills. Plug Zahara into your finance system, and immediately eliminate the need to key-in invoices. You'll also gain a real-time view of all spending across your care sites, and with our PO system, you can even control spend before it occurs.

# Exhibitors A-Z

Abyss Systems Ltd	<b>M33</b>	Care Control Systems	<b>J12</b>
Acuity Law	<b>G32</b>	Care Home Management Magazine	<b>L14</b>
Advanced	<b>M24</b>	Care Quality Commission	<b>L50</b>
Algeos / Levabo	<b>K21</b>	CareDocs	<b>M12</b>
Almas Industries UK Ltd	<b>K43</b>	carehome.co.uk	<b>L44</b>
Alzheimer's Society	<b>F20</b>	Charles Taylor Trading	<b>P2</b>
Andor Cards	<b>H16</b>	Checkit	<b>H14</b>
apetito	<b>L30 / VIP Lounge</b>	Children's Air Ambulance	<b>G22</b>
bioperl	<b>H54</b>	Cirrico	<b>J26</b>
Bibetta	<b>J52</b>	Clinical Education Academy	<b>L12</b>
Birdie	<b>H34</b>	Cloud Doing Good	<b>K16</b>
Blaucomm	<b>L24</b>	Connect Studio	<b>K32</b>
Borderless	<b>G16</b>	Creative Mojo LTD	<b>H24</b>
Camascope	<b>K14</b>	Creed Foodservice	<b>K34</b>
Carebeans	<b>K12</b>	Croner-i	<b>K42</b>
Care Check	<b>M10</b>	Curam Care	<b>K50</b>
Care Choices Ltd	<b>F12</b>	Denizns	<b>K40</b>

# Exhibitors A-Z

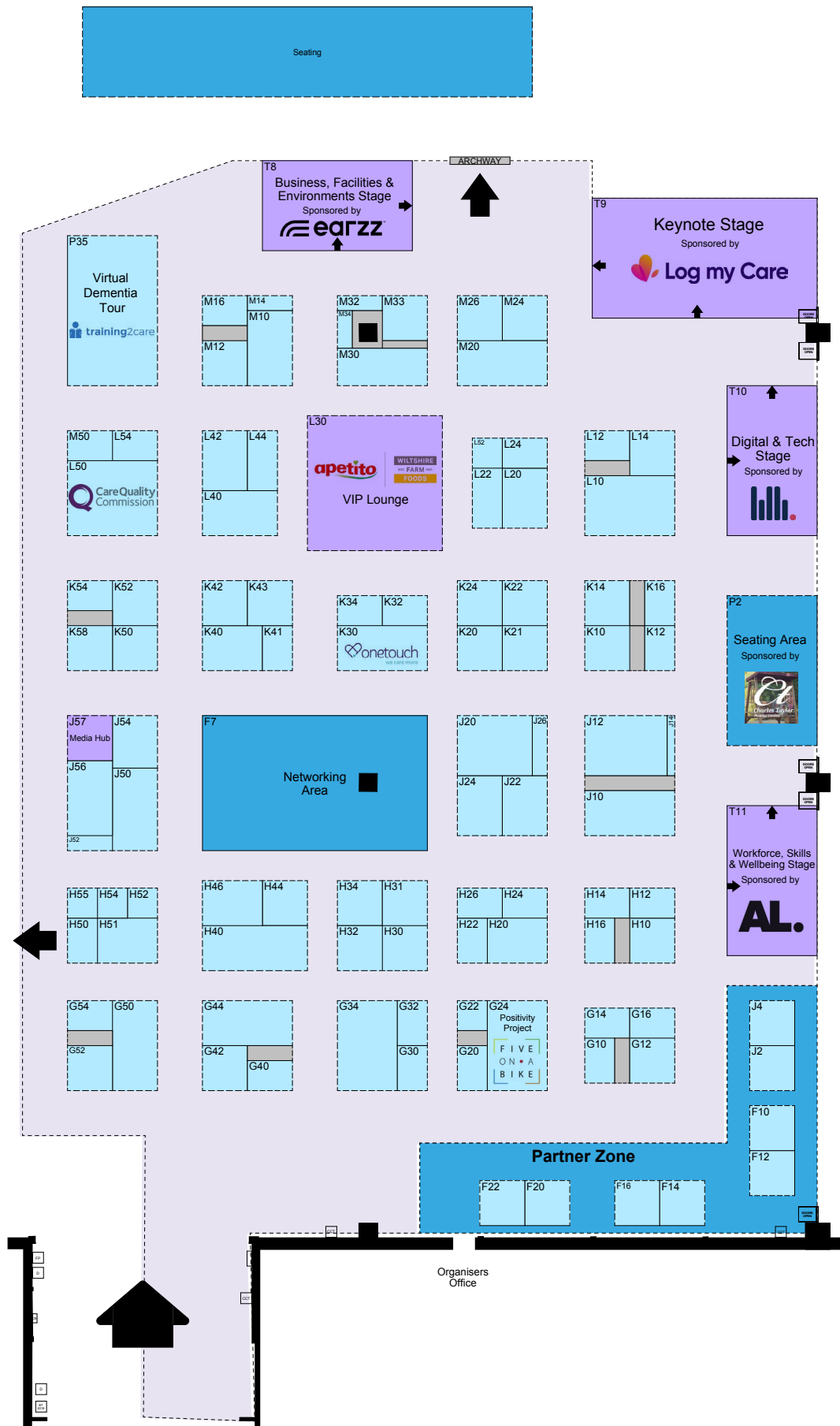
Due Diligence Checking Ltd	<b>H52</b>	Inspired Inspirations	<b>J10</b>
Earzz	<b>M50</b>	Institute of Health and Social Care Management	<b>J4</b>
Eden Alternative	<b>J24</b>	iplicit	<b>H20</b>
EF Training	<b>M14</b>	ITP Promedia	<b>F22</b>
Elis UK	<b>H32</b>	ltransition	<b>H50</b>
Equity Release and Mortgage Partnership	<b>G12</b>	Katacare	<b>M16</b>
ESGO	<b>L42</b>	Lifted Talent	<b>K58</b>
Exergame Solutions	<b>G52</b>	Lockabox	<b>G10</b>
Flexi Recruits	<b>M30</b>	Log My Care	<b>K22</b>
Florence	<b>G14</b>	LTC Global	<b>H12</b>
Found by Lottie	<b>K24</b>	Marsh Commercial	<b>K52</b>
Haigh	<b>M26</b>	Music in Mind	<b>M32</b>
Health Automated	<b>J50</b>	My Learning Cloud	<b>H44</b>
HelloFresh	<b>G30</b>	NACAS	<b>J2</b>
Homecare Association Limited	<b>H10</b>	National Care Association	<b>F10</b>
ILECS Limited	<b>J22</b>	Nestlé	<b>G40</b>
iMEDicare	<b>J14</b>	Nourish Care	<b>L20</b>

# Exhibitors A-Z

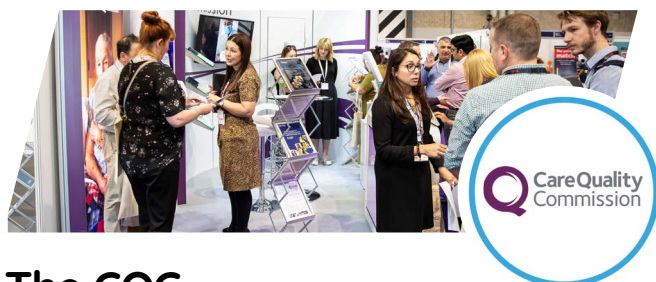
OM Interactive Ltd	<b>G42</b>	Speaksee	<b>G54</b>
OnePlan	<b>H46</b>	Spearhead	<b>G34</b>
OneTouch	<b>K30</b>	Specsavers	<b>G50</b>
Open Road Access	<b>K54</b>	The Access Group	<b>H51</b>
OutsideClinic	<b>G44</b>	The CARE Connector Network	<b>F14</b>
Painchek	<b>H31</b>	The Care Workers' Charity	<b>K10</b>
Pairly.com	<b>J54</b>	The Carer	<b>F16</b>
PASS	<b>M20</b>	The Health & Safety Group	<b>H26</b>
Person Centred Software	<b>H40</b>	Thornbury Nursing Services	<b>M34</b>
PiPcal	<b>F24</b>	Training2Care	<b>P35</b>
Precision	<b>K20</b>	ViClarity	<b>G20</b>
Proximos	<b>L54</b>	Wellell	<b>L40</b>
Retinue	<b>H22</b>	Wiltshire Farm Foods Professional	<b>J20</b>
Richardson Care	<b>H55</b>	Woodspeen Training	<b>H30</b>
RNIB	<b>K41</b>	Workforce.com	<b>L22</b>
Salesforce	<b>J26</b>	Zahara Systems	<b>L52</b>
Sona	<b>L10</b>		



# UK Care Week 2024 Floorplan



# Show Features



## The CQC Inspector Hub Stand L50

You'll have the opportunity to speak to a CQC inspector on stand L50 and discuss with local inspectors any queries you may have, as well as dealing with registration advice.

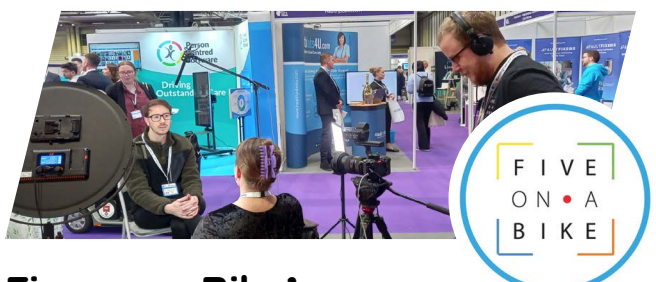
You can book a 1-2-1 meeting via our website [ukcareweek.com/cqc-inspector-hub](http://ukcareweek.com/cqc-inspector-hub)



## Training2Care Virtual Dementia Tour Bus Stand P35

Come to stand P35 on a first come first serve basis, where 3-4 people at a time will begin the immersive learning experience and insight into what life is like for people living with dementia to enable social care business owners and teams to ensure that the best tools and techniques for caring are in place.

**To book a free training session, speak to to team on stand P35 when you arrive at the event.**



## Five on a Bike's Positivity Project Stand G24

Come and see the Five on a Bike team on stand G24 where they will be setting up a fabulous studio and inviting visitors, exhibitors, and speakers to share a positive short story to help spread the positive word about care.



## apetito VIP Lounge Stand L30

Are you a care home group with 5 or more homes? If so, apetito's mission is to help care homes like yours overcome rising costs and staff shortages by providing over 200 nutritionally balanced, delicious meals that cater to all your needs. The team are excited to showcase apetito; giving you the opportunity to talk to their catering specialists, sample their tasty food, and learn tips about enhancing the dining experience in your care home.

**Join us in the VIP Lounge (L30) for this exclusive tasting session.**

Visit [ukcareweek.com/apetito-lounge](http://ukcareweek.com/apetito-lounge) to register your space & reserve a table!



## The Wellbeing Zone Stand J56

Run by Community Massage Project - visit stand J56 to sit back and have a well-deserved relaxing massage at the event.

# THE ALZHEIMER'S & DEMENTIA SHOW

14-15 June 2024  
ExCeL London

in partnership with  Alzheimer's Society

NEW FOR 2024



Friday 14th June



# Unlocking the future of dementia:

From groundbreaking research to compassionate care, support and training experiences you won't find anywhere else, it's all under one roof at the UK's premier event for health & social care professionals, public and family caregivers.



[alzheimersshow.co.uk](http://alzheimersshow.co.uk)

Platinum sponsor  
 Seating Matters

supported by  
 DementiaUK  
Helping families face dementia

 NAPA  
Prioritising Wellbeing  
 training2care

media partner  
 THE ARER

accredited by  
 CPD MEMBER  
The CPD Certification Service

supporter of  
THE DEMENTIA CARE AWARDS  
Celebrating Excellence in Dementia Care  


organised by  
 ROAR  
EVENTS



# Quality leads sent straight to your inbox

**Maximise your online  
presence with Autumna**

Scan the QR code to register  
your Care Home  
or Home Care profile



or email  
[debbie@autumna.co.uk](mailto:debbie@autumna.co.uk)  
for more details

Debbie Harris  
Founder - Autumna



The only website and advice line specialising in self-funding clients

  
**Autumna**



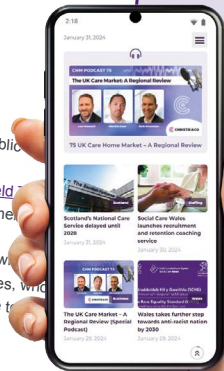
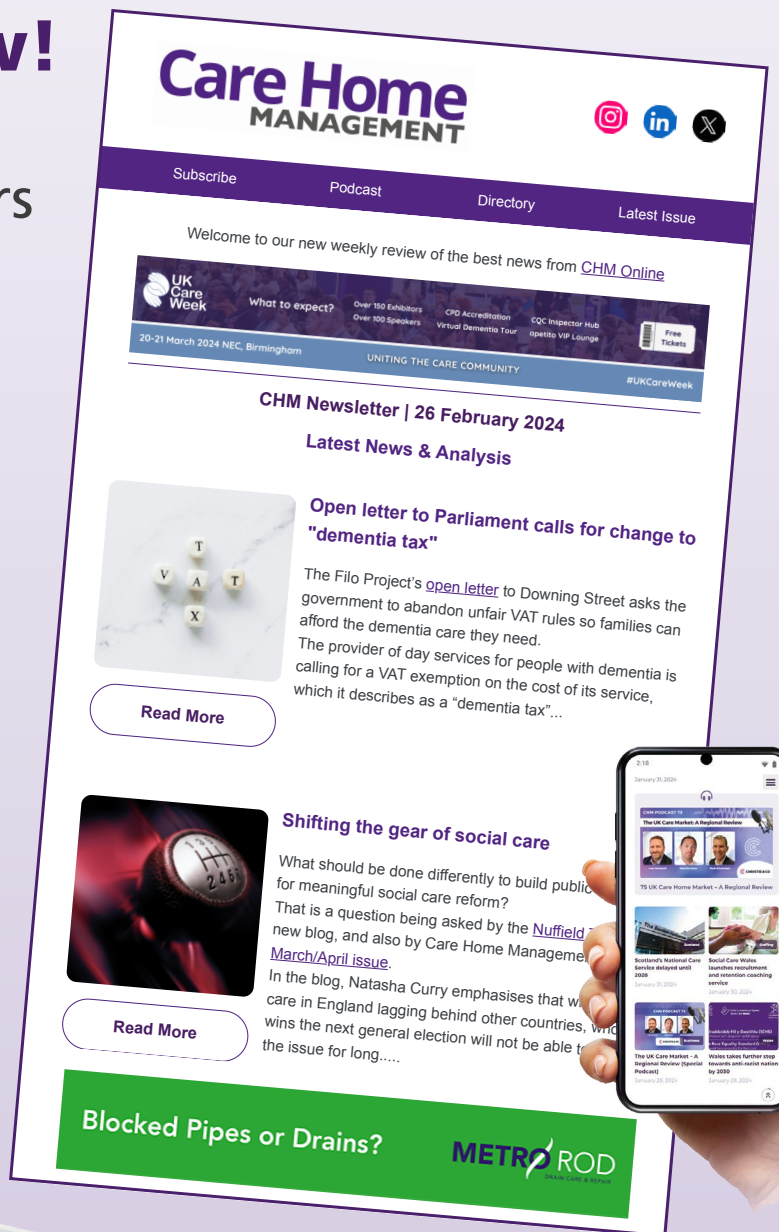
# Care Home MANAGEMENT

WE HAVE A  
**BRAND NEW**  
WEBSITE

**Check it out now!**

Stay in touch with  
our weekly newsletters  
and digital issues

**SCAN ME NOW!**



Find us on



[www.chmonline.co.uk](http://www.chmonline.co.uk)



# Alzheimer's Society Annual Conference

**Making dementia a priority for all**  
14 May 2024

etc.venues, 155 Bishopsgate,  
London and online

Sponsored by  
**Rothsay**



The Care Sector's Premier Publication  
in Print and Weekly Digital

Visit us on  
Stand F16

- Latest adult social care sector news
- Thought-led articles and advice from sector professionals
- Latest care home stories, celebrations, achievements and more!
- Latest products & services from leading suppliers

Join the 20,000 Adult Social Care Professionals who receive **The Carer Digital** directly into their inboxes each and every Wednesday!



Sign up for **FREE** today!  
Visit [www.thecareruk.com](http://www.thecareruk.com)

**NEW RECRUITMENT WEBSITE**  
Are you looking for the right people to fill your vacancy?  
**WE CAN HELP! [recruitment.thecareruk.com](http://recruitment.thecareruk.com)**





## GET IN TOUCH

We'd love to hear from you on how your business is progressing in 2024. Specifically, any new ideas you've implemented, any ways you are making additional revenue, your sustainability initiatives and your plans for the rest of the year - we know that a lot of you are doing inspiring things every day in your businesses and we want to give you the opportunity to shout about it.

**Please reach out to [jamesd@cimltd.co.uk](mailto:jamesd@cimltd.co.uk) for the opportunity to be featured in Care Home Magazine.**

# care home

[www.carehomemagazine.co.uk](http://www.carehomemagazine.co.uk)



PROVIDERS activate your **FREE** subscription today



EVERYTHING  
**YOU**  
NEED

## PROVIDERS SUBSCRIBE FOR **FREE** TO RECEIVE

- + Gain CPD points
- + Access extended features and additional content
- + Read latest news email alerts
- + Comment on features and debate important subjects
- + Get discounts to CMM Insight events\*
- + Access archived editorial
- + Receive a monthly digital edition of CMM



SCAN HERE TO  
SIGN UP



WE ARE EXHIBITING  
Come and see us on  
**STAND F12**

Subscribe at [www.caremanagementmatters.co.uk](http://www.caremanagementmatters.co.uk)

@CMM\_Magazine

\*Cannot be used in conjunction with any other offer.



# UK Care Week

UNITING THE CARE COMMUNITY

Join us next year...



19-20 March 2025



NEC Birmingham



For exhibiting & sponsorship enquiries speak to our team at the sales lounge (stand H60) or email [sales@ukcareweek.com](mailto:sales@ukcareweek.com)

#UKCareWeek





Making a real difference



Autumna



Prosperwell

Sona.

SUPPORTING PARTNER



# LEADERS IN CARE AWARDS

in association with



## 8 October 2024

NATIONAL CONFERENCE  
CENTRE, COVENTRY ROAD,  
SOLIHULL, B92 0EJ

DRINKS RECEPTION AND DINNER  
NATIONAL CONFERENCE CENTRE

BOOK HERE:



FOR MORE INFORMATION OR SPONSORSHIP OPPORTUNITIES  
CONTACT CAROLINE KELLY  
CAROLINE.KELLY@ITPPROMEDIA.COM



Institute of  
Health &  
Social Care  
Management

*...By our members, for our members*

# BECOME THE LEADER YOU DESERVE TO BE

## Leadership Training Feedback

*"I thought this was a really fun, thought provoking course. Well delivered by Sue. The little exercises really helped to bring people together and get the thinking juices going."*

*"I will make use of many, if not all of the tools shared today. My first goal is to use the WOW tool in the next team meeting to focus on staff team building and improving culture"*

## Membership gives you access to CPD accredited

Leadership & management training courses  
Practical short courses

Plus:

Online events and resources

Access to member benefits e.g. free wellbeing support  
Special Interest Group, forums and much more!

All for just £13 per month per individual member.  
For Corporate membership email [sjones@ihm.org.uk](mailto:sjones@ihm.org.uk).



## Join us here

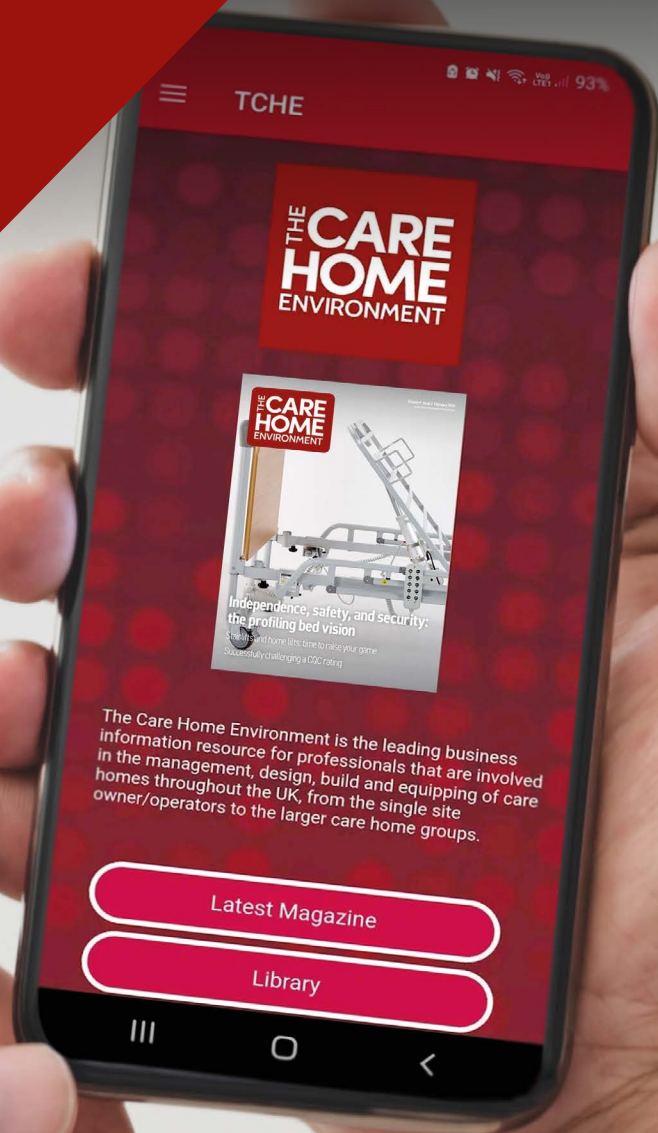
<http://www.ihm.org.uk/create-user/>  
or scan QR code.



[www.ihm.org.uk](http://www.ihm.org.uk)

 [contact@ihm.org.uk](mailto:contact@ihm.org.uk)

# Download the app now



See the latest issues on PC, Tablet and Android or iOS devices



◀ **SCAN HERE** ▶



# JOIN US AT OUR VIP LOUNGE UK CARE WEEK

Discover how you can elevate your care home's dining experience, delivering exceptional nutrition and surpassing flavour, all while saving you time and money.

Scan here  
to request  
a booking



**apetito**

WILTSHIRE  
EST. FARM 1991  
FOODS