



CW DEWIRING SOLUTIONS

THE WORLD'S SMARTEST DEWIRING
DW1400SC | xDW1400SC | DW1800

CROSS  WRAP®



THE WORLD'S SMARTEST DEWIRING

With the CW Dewiring, Cross Wrap was the first in the world to introduce dewiring for plastic material bales. CW Dewiring cuts the bale wires, removes them from the material and coils the wires for further processing – automatically. Our highly customizable machine improves workplace safety and ensures reliable dewiring for various bale sizes, capacities, materials, and ties in the same material feeding line.



SAFETY FIRST – Automatic dewiring improves the safety of your working environment, because manual dewiring isn't required.



EFFICIENT – Automatic bale dewiring and steady material flow save labor costs and increases uptime.



COST-EFFECTIVE – CW Dewiring is energy efficient and has low maintenance costs. The solution also prevents wear and tear in other machinery, decreasing maintenance costs in your operation line as a whole. The metal wire coils can easily be recycled.



FLEXIBLE – CW Dewiring can be adapted to various production volumes and environments. One operation line can dewire various bale sizes, mixed materials, and different bale ties.



CUSTOMIZABLE – CW Dewiring solution has several add-ons available for varying customer needs. Every one of them is designed based on customer feedback.



EASY REMOTE SERVICE – Cross Wrap can adjust, reprogram, and troubleshoot your Dewiring machine through Tosibox remote control.

AUTOMATIC AND SAFE

CW Dewiring makes the cutting of steel wires in bales efficient. There's no need for manual wire cutting, when the automated machine does the job. Automation prevents human injury caused by the wires. It also keeps your material flow even on your operation line. The machine coils the removed wires into small, tight coils, which saves storage space. Then the coils can be recycled easily. You get increased efficiency and better workplace safety in one package.

BUILT TO LAST

CW Dewiring provides long-lasting reliability. The machines are easy to maintain and they are equipped with a Tosibox online modem that allows remote troubleshooting and software upgrades to ensure that your machine always performs at its best. Our Life Cycle Service is always there for you if you need help and spare parts are available. We are proud to have several patents on our automated dewiring method that serves you for years to come.

OUR MACHINES

We have three Dewiring models available: the DW1800, DW1400SC and xDW1400SC. The first two differ in size, cutter type and placement. The xDW1400SC solution adds a bale turning unit in front of the DW1400SC. This makes the machine able to handle both horizontally and cross-wired bales.



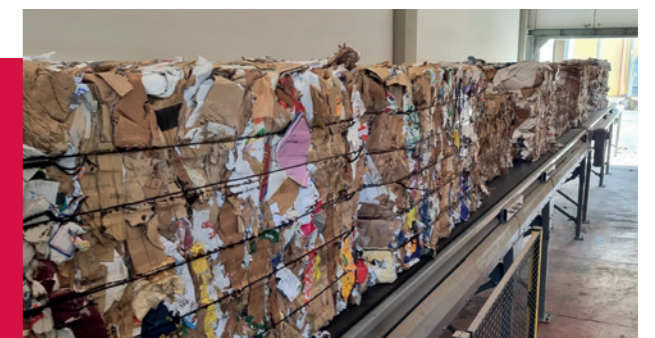
CW DEWIRING FOR DIFFERENT MATERIALS



PET BALES



MIXED PLASTIC BALES



OCC BALES



PULP SHEET BALES

CW Dewiring is also suitable for many other materials, such as HDPE, LDPE, plastic film, paper, straw, cotton and recycled textile.

CW DEWIRING CONCEPT

1 FEEDING CONVEYOR (OPTIONAL)
Our delivery can include the feeding conveyor, or the customer's existing conveyor can be utilized. The CW Dewiring belt conveyors move wired bales carefully. Electrically operated heavy duty belt conveyor minimizes material loss and reduces maintenance cost. The conveyor amount and dimensions can vary according to bale size and production.

2 OPENING CONVEYOR
Hydraulically operated heavy duty belt conveyor transports the bales for opening and the opened material to the process. The conveyor is equipped with side covers so that the material and wires do not spread around. Belt scraper keeps the conveyor clean. Smooth start & stop feature extends the conveyor lifetime.

3 GRIPPERS & CUTTERS
Hydraulically operated components grab, hold and cut the wires from around the bale. The DW1400SC has a gripper and a side cutter for cutting and removing bale wires safely and automatically, whereas the DW1800 has grippers and a front cutter for the same function. The wires are separated with the unique gripping system. High wear resistant steel grippers have long replacement or sharpening intervals. The gripping system can be easily adjusted for different bales by using the touch screen. Different kinds of grippers are available for optimized functioning with different kinds of materials.

4 WIRE COILING UNIT
Coiling unit for coiling bale wires into tight coils. Hydraulically operated functions are reliable, efficient and easy to maintain. The machine releases the coils to a specific area for the further collection. Clean wires are valuable to recycle.

5 MAINTENANCE PLATFORM
Maintenance platform provides easy and safe access to operate and maintain the machine. The height of the maintenance platform and the Dewiring machine are designed according to the requested line height.

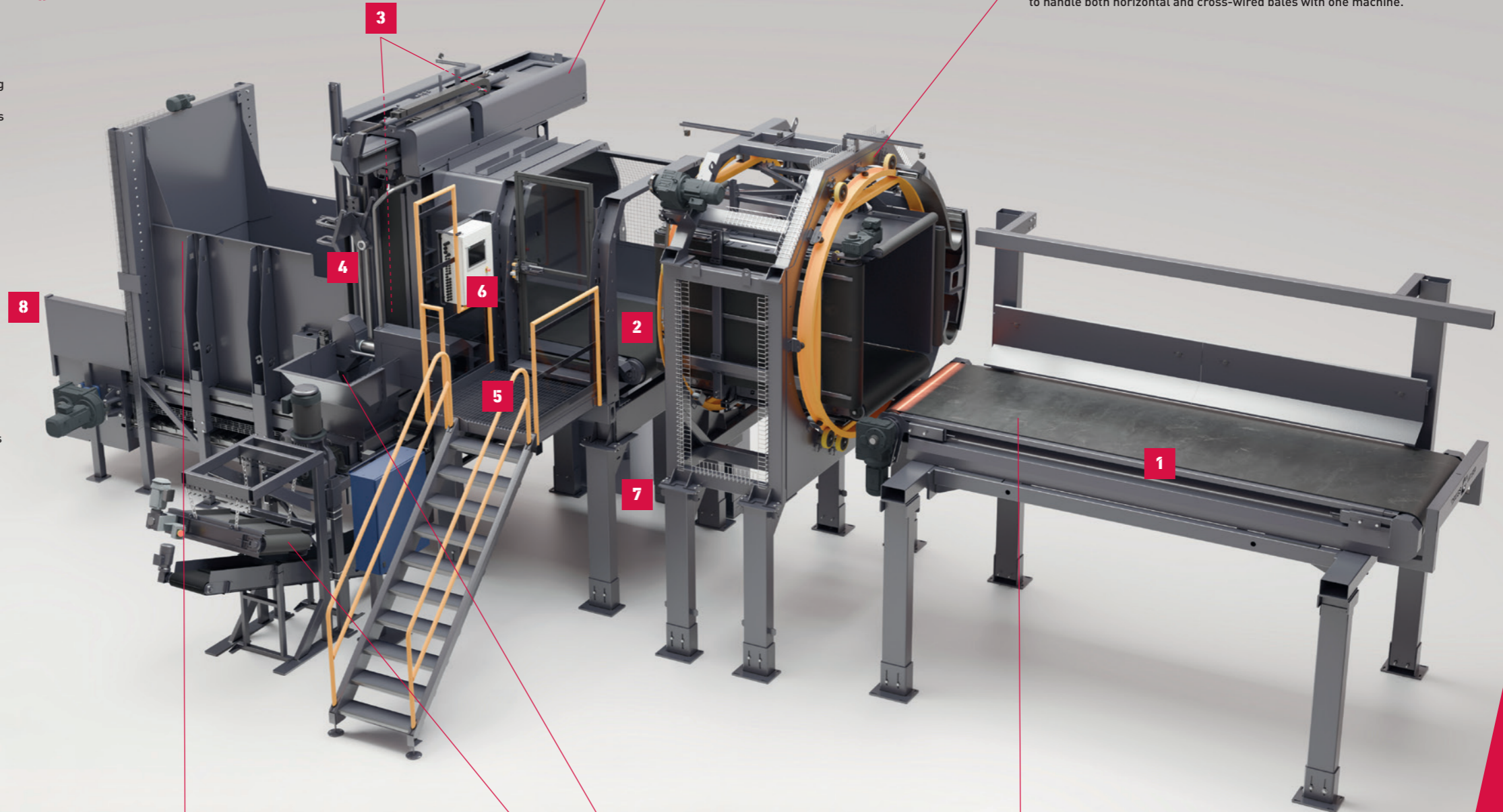
6 ELECTRIC CABINET & CONTROL PANEL
The control panel is easy to use and makes daily operating and changing settings effortless. The machine is equipped with Siemens safety logic, which reduces extra safety relays and maintenance cost. Standard communication protocol is Profinet and customizations are made e.g. with Profibus. Flexible integration to factory systems is available as an option. The 3G, LAN, WLAN modem allows troubleshooting and program updates to all programmable components and provides remote controlling, modifying, and monitoring via the internet. The modem connection minimizes production down times. Web camera is available as an option.

7 HYDRAULIC UNIT
Hydraulically operated functions are reliable, efficient and easy to maintain. Well sealed cabinet has easy access, and it provides dust protection and noise reduction. Cabinet structure and component placing allow efficient cooling.

8 OUTFEED CONVEYOR (OPTIONAL)
The delivery can include the outfeeding conveyor, or the customer's existing conveyor can be utilized. Electrically operated heavy duty belt or lamella conveyor ensures low maintenance cost. Both conveyor types are always equipped with cleats to prevent material slipping. The number of conveyors, dimensions and style can vary according to bale sizes, production capacity and layout. The conveyor can be covered from the top for the material and weather protection.

DEWIRING MACHINE (DW1400SC)
The heart of our Dewiring concept.

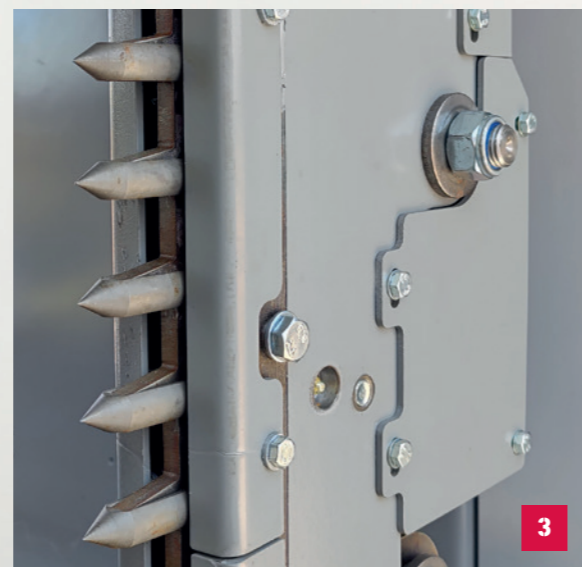
BALE TURNING UNIT (OPTIONAL)
Makes a DW1400SC a xDW1400SC. Bale turning unit makes it possible to handle both horizontal and cross-wired bales with one machine.



BALE SLICE BREAKER (OPTIONAL)
Makes your material flow loose without breaking material, such as PET bottles.

COIL SHREDDER (OPTIONAL)
Crushes the removed metal coils. This brings your storing capacity to the next level.

FEEDING CONVEYOR (OPTIONAL)
Can be customized in length, width and height.



MAGNET SEPARATOR (OPTIONAL)
Separates metal wire pieces from material left from the bale. The output is clean metal valuable to recyclers. Conveyor for the shredded material.

EXAMPLES OF OTHER OPTIONS

- BALE WEIGHING SYSTEM FOR OPENING CONVEYOR
- BALE LOADING SUPPORTS FOR FEEDING CONVEYOR
- FORKLIFT FLOOR STOPPER
- VARIETY OF CONVEYORS IN DIFFERENT HEIGHTS, WIDTHS AND STYLES

This brochure introduces some of the available additional features. Get in touch with us at sales@crosswrap.com or visit our website www.crosswrap.com to learn more about them.

TECHNICAL SPECIFICATIONS

DW1400SC

Capacity Up to 60 bales/h
 Bale size W 700-1400 mm / 2.29- 4.59 ft, H 700-1400 mm / 2.29- 4.59 ft, L 900-2500 mm / 2.95-8.20 ft
 Bale weight..... 200-2000 kg / 440-4400 lbs
 Hydraulic unit 15 or 22 kW / 20 or 30 hp

- Max pressure 190 bar / 2755 psi
- Oil capacity 200 l / 53 gal

Dewires horizontally wired bales.

xDW1400SC

Capacity Up to 30 bales/h
 Bale size W 720-1300 mm / 2.36-4.26 ft, H 720-1300 mm / 2.36-4.26 ft, L 900-1900 mm / 2.95-6.23 ft
 Bale weight..... 200-2000 kg / 440-4400 lbs
 Hydraulic unit 15 or 22 kW / 20 or 30 hp

- Max pressure 190 bar / 2755 psi
- Oil capacity 200 l / 53 gal

Dewires both horizontally wired and cross-wired bales.

DW1800

Capacity Up to 60 bales/h
 Bale size W 700-1400 mm / 2.29- 4.59 ft, H 700-1800 mm / 2.29-5.90 ft, L 1100-2500 mm / 3.60-8.20 ft
 Bale weight..... 250-2000 kg / 550-4400 lbs
 Hydraulic unit 37 kW / 50 hp

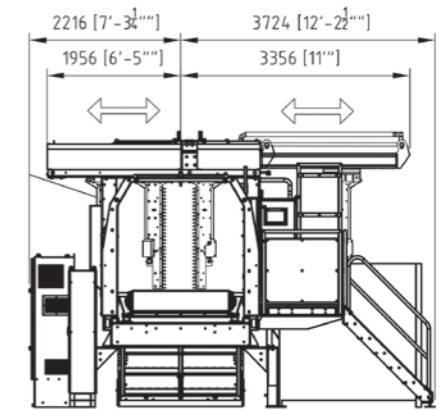
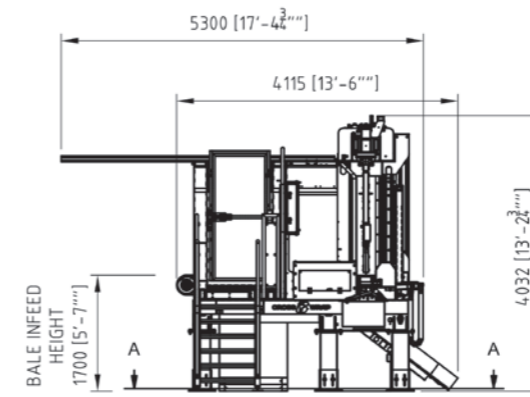
- Max pressure 190 bar / 2755 psi
- Oil capacity 350 l / 92 gal

Dewires horizontally wired bales.

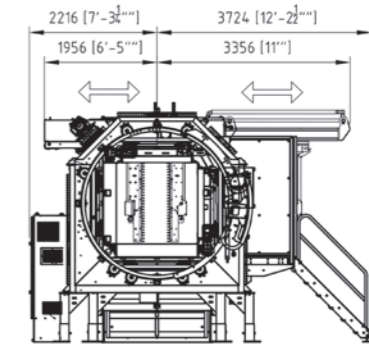
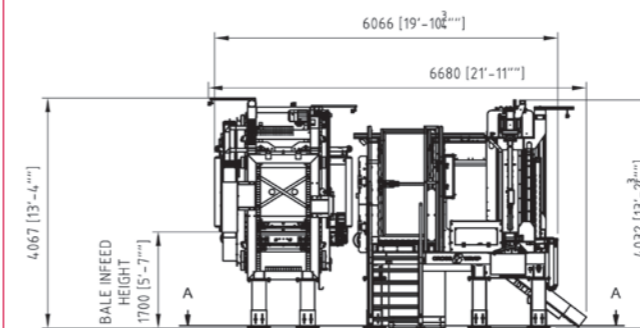


LAYOUT FOR STANDARD MACHINE

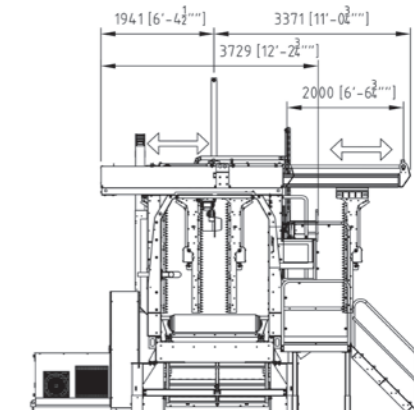
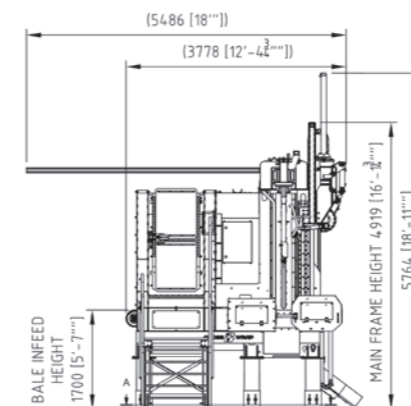
DW1400SC



xDW1400SC



DW1800





EST. 1994

Cross Wrap is a global leader in manufacturing smart material wrapping and bale dewatering solutions for various industries.

Our customers are operators in the waste treatment and energy industries, professionals in plastic recycling, market leaders in paper recycling and processing, and top companies in the wood industry.

Ask about our smart solutions for your baled material!



WRAP IT SMARTER

Cross Wrap Oy, Teollisuustie 6, FI-71800, Siilinjärvi, FINLAND,
sales@crosswrap.com, www.crosswrap.com

Cross Wrap's product range meets safety requirements of the industry, and the manufacturing process is supervised under the certified quality system ISO9001. The products in the pictures are suggestive and may not look exactly the same as a bought product. Every machine ensemble is customized for the client. Weights and measurements are given within normal tolerances. Manufacturer reserves the right to change the features at any time.