

WORKING TOGETHER

STAR Index Partners | Working Together for a Brighter Tomorrow



Sustainable | Technical | Assets | Responsible

INTRODUCTION

Why partner with STAR Index?

With your ESG and sustainability expertise and our leading platform, together we will make a difference to our planet and it's people.

Our partnership will support your consultancy, to deliver revenue, share in lead generation plus much more.

This guide will explain all the benefits of partnering with STAR Index and how to start your STAR Index Partnership journey.



We are delighted that you are considering joining us as a Partner and are looking forward to working with you to help your clients to manage their supply chain risk with clarity and confidence.

In increasingly fragmented global supply chains, gathering data to provide actionable insight that enables organisations to manage and mitigate risk is not only good for business, but also for sustainability, the environment and humanity.

Without the visibility that STAR Index helps to provide - there is no accountability.

Global trends show that businesses are continuing to make bold commitments to address ESG and sustainability targets, to effectively do this every business needs actionable data to drive progress.

WE ARE NOT THE SUBJECT MATTER EXPERTS, THAT'S YOU

The STAR Index Partner Program enables our partners to grow their business by providing an exceptional ESG and sustainability risk analytics platform to their clients.

Collaborative platform

We provide a collaborative platform, which is free for you to use, to manage client projects, harness data and do the heavy lifting of gaining information from complex supply chains



Supply chain mapping

Free to use supply chain mapping capability, facilitating your clients getting greater understanding and data from their supply chains and being able to gain the granular detail (such as scope 3 detail) to meet increasing regulatory, customer and consumer demands



Continuous improvement

Through our history in risk management, coupled with unrivalled technology, we are able to help you simplify the scoring and ongoing improvement of your clients sustainability, risk management and ESG credentials



How can we help you?

LEAD GENERATION

STRATEGIC CONSULTING PARTNER

Our aim is to create a valuable reciprocal relationship through our partnership - sharing resources and contacts to help grow our respective businesses and enhance our reputations as key providers within the ESG space.

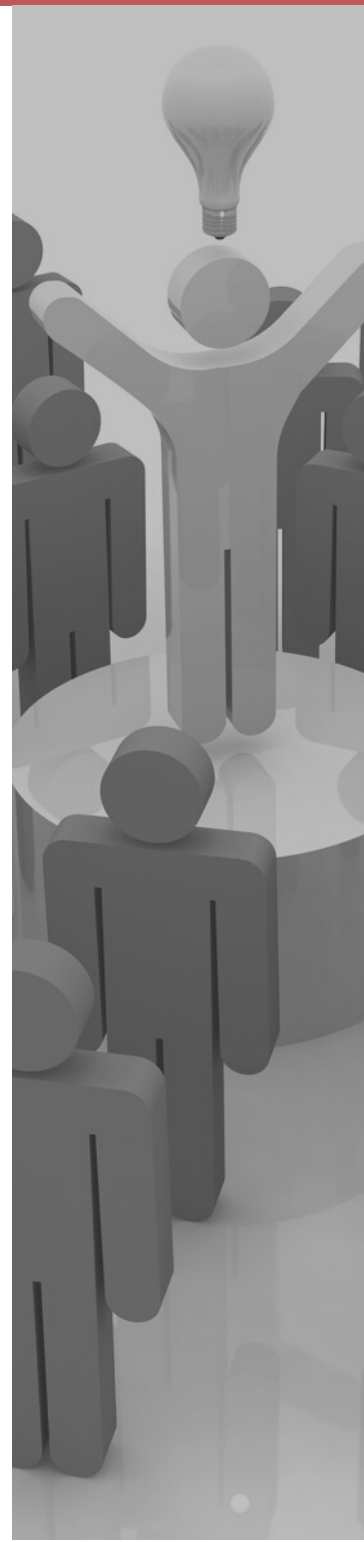
We are connected to many businesses globally who require ESG advice and guidance from reliable consultants to help support them on their journey.

As one of our strategic partners we hope you will also generate leads for STAR Index, engaging with your networks and stakeholders to provide introduction to those businesses who require actionable insight for wider risks in their supply chains. STAR Index enables them to capture, measure, report and improve risk across complex supply chains in any sector.

We will provide content and tools which enable you to prepare and deliver proposals and will work alongside you to bring them to a successful conclusion. Our implementation and delivery teams will then deliver the solution directly to your clients. Following initial implementation you will be responsible for ongoing maintenance and management of your clients usage of the solution through its lifecycle.

REFERRAL PARTNER

We also value any introductions to businesses with whom we can work with directly - if they result in a successful implementation we will reward you directly.



WHAT CAN WE OFFER YOU?



Share in lead generation, content and shared marketing, workshops, webinars and events and much more



We do the data capture and supplier engagement, leaving you to support your clients with the stuff that matters



A forum for knowledge transfer and sharing of subject matter expertise & insight



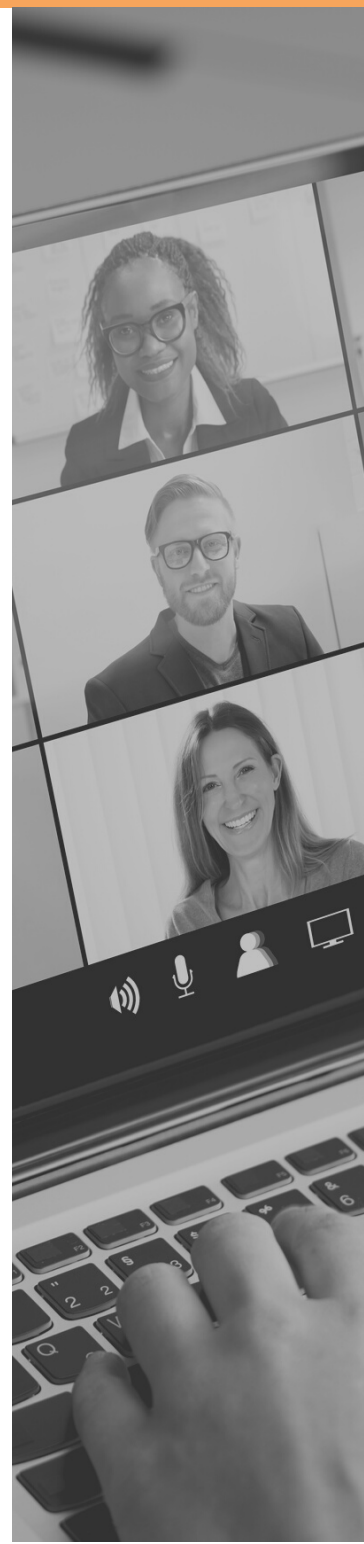
Value share and lead generation to help grow your business and recurring revenue



Disruptive cost model – sustainability improvement has historically been very costly, our model turns this on its head



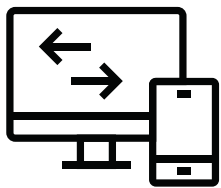
Free training modules - make the most of your client relationships and social media presence



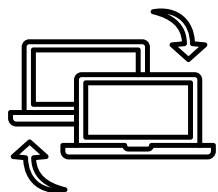
WHAT CAN WE DELIVER TOGETHER?



Market leading consulting – STAR Index partners know what our clients need to achieve, and are prepared to get involved to deliver that change



Single provider – STAR Index is a single provider of ESG and sustainability consultant services and market leading software, providing a strong value proposition for customers that are using the STAR Index platform



STAR Index compliments existing systems – we're firm believers of utilising current platforms and we hit the ground running by extracting data from pre-existing systems



Our established track record – leveraging QADDEX's 12 year expertise in managing complex supply chain data for over 16,000 food factories



Market leading software – with multiple deployment options that are fully configurable to each client's requirement

INTERESTED? APPLY TO BECOME A PARTNER

To find out more about how working with us could benefit your organisation, please complete our Partner application form.

Application form



Watch our short **video** on how our partnership could benefit you



Visit our website to learn more about our **platform** and how you can support your clients to capture, measure, report and improve with STAR Index



Check out our **partners page** to see who we are partnering with



QUESTIONS?

CONTACT US



[https://www.linkedin.com/
company/star-index](https://www.linkedin.com/company/star-index)



www.star-index.com



enquiries@star-index.com



Sustainable | Technical | Assets | Responsible

