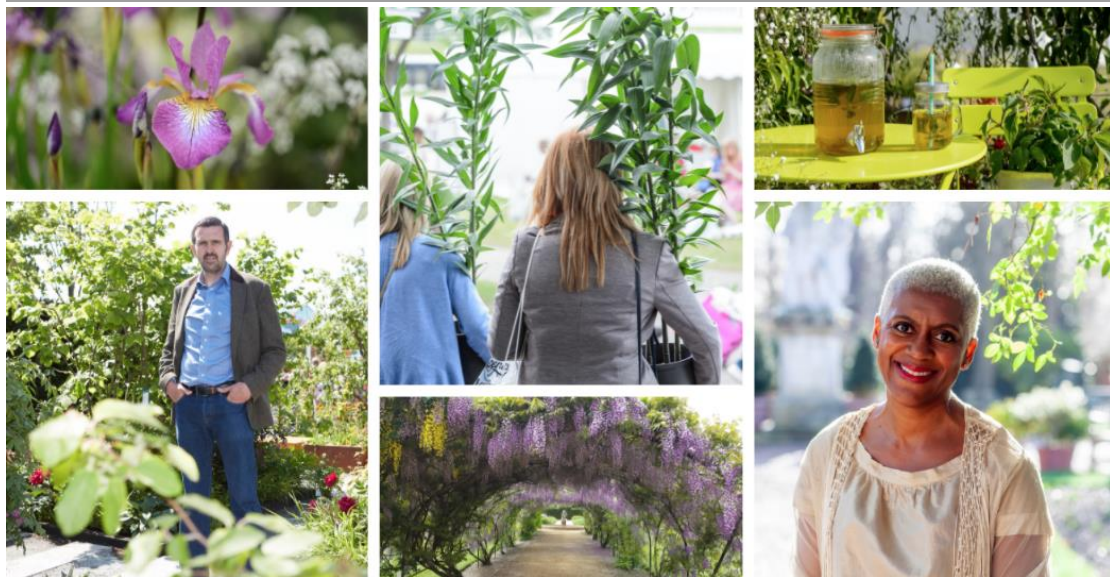


PRESS RELEASE

Thursday, 13 May 2021



Countdown is on for BBC Gardeners' World Spring Fair, taking place at beautiful Beaulieu

- What To Do Now Stage hosted by BBC Gardeners' World Experts
 - Hillier Experience garden feature
- Beautiful Borders & Stunning Small Spaces
 - BBC Good Food Market

With less than a month to go until the brand-new **BBC Gardeners' World Spring Fair**, fans are in a state of 'budding' excitement for the first gardening show in over a year. Taking place from **28th to 30th May**, in the grounds of beautiful Beaulieu in Hampshire, the newest event from *BBC Gardener's World* is on course to be a sell-out success.

Visitors can expect the usual feast of flowers and food that a *BBC Gardeners' World* show offers with **Beautiful Borders** and **Small Spaces**, an **Allotment** by award-winning renowned horticulturist Jon Wheatley, the **What To Do Now stage** hosted by *BBC Gardeners' World* experts, **high-quality nurseries** to browse and buy from alongside a comprehensive range of **gardening exhibitors** and a pop-up **BBC Good Food Market** with street food and artisan food stalls bursting with seasonal produce and tantalizing treats. Plus, live entertainment at the bandstand hosted by Chris Bavin.

Managing Director for *BBC Gardeners' World* Events, Rachel Poletti-Gadd said: "We couldn't be happier to be on the countdown to our new Spring Fair and we are thrilled that we have found such a wonderful outside setting as Beaulieu for the show. Visitors will be able to immerse themselves in all the joy that the Spring gardening season has to offer and also experience the beautiful grounds and gardens of Beaulieu itself."

At the heart of the Spring Fair will lie a stunning four-part **Hillier Experience** feature garden that will take the visitor on a journey from dawn to dusk. The morning garden awakens the



senses with fragrant herbs and an abundance of vegetables and plants in shades of bright greens and yellows. The afternoon garden in pastel tones, brings home memories of days whiled away in sunshine, picnicking and having afternoon tea surrounded by scented plants and herbaceous borders. Rich sunset tones and rustic orange with twinkling lights and heady scents drift through the floral display of the evening garden, with the final area combining dark foliage with pops of colour to create the relaxing ambience of the night garden.

In celebration of the brand-new Spring Fair, Hillier will unveil a striking new plant, **Cercis x canandensis 'Eternal Flame'**. This is a beautiful and versatile new variety of Cercis that has deep glossy red leaves which turn gradually through to orange and yellow shades.

BBC Gardeners' World presenters Adam Frost and Arit Andersen will be sharing their expertise on the **What To Do Now** stage alongside the *BBC Gardeners' World* Magazine Team. Expect top tips on creating **Creative Containers**, how to become top of the crops with **Grow Your Own** advice and take poll position with how to **Put Pollinators First**.

BBC Gardeners' World presenter Arit said of the new Fair: "During the challenges of this last year it's been gardens and gardening that has helped so many people, and I'm delighted that so many new gardeners have unearthed the many benefits gardening has to offer. I'm looking forward to being with my fellow Gardeners' World experts, to encourage and help these lockdown discoveries, become lifelong passions.

The joy of gardening is to experiment, we're always learning and evolving and I leave every gardening event with far more knowledge (and a great deal more plants) than I arrived with. The gardens and grounds of Beaulieu are delightful too so I can't wait for a wonderful weekend being with plants and people."

The **Plant Shopping** will provide a haven for plant lovers. A hand-picked selection of leading nurseries will set the horticultural standard with quality plants for sale, striking displays of prized spring blooms as well as some new varieties launching at the Fair. Visitors will be able to enjoy their day bag free by taking advantage of the Plant Creche supported by the gardening charity Perennial.

Six **Beautiful Borders** will be overflowing with the essence of spring and full of plant combinations and design ideas to recreate at home. From an exploration of the legend of The Green Man representing the cycle of growth and rebirth by Lucy Miller, the importance of providing water to encourage a diversity of wildlife by Emma Hearne, a Scandinavian landscape by Damien Michel and a woodland edge by Sparsholt College for Maggie's. Local Beaulieu nursery Fairweather's, will be creating two borders, Patrick's Patch based on their much-loved productive garden of the same name, and 60 Trees for 60 Schools in Fairweather's 60th Year, a border which encourages schools and children's charities to apply for a tree for their school grounds.

Two small spaces include one **Longstock Park Landscapes Estate 'pop-up' garden**, designed to reflect the various elements of the Estate; such as the water garden, herbaceous border



and the wider estate, whilst also being planted with sustainability and biodiversity in mind. The Longstock Park team illustrate how we can work closely with nature when we design and plant our garden, the ethos behind Longstock Park Landscapes' garden design service.

The second small space, a collaboration between **Rolawn** and **The APL** (Association of Professional Landscapers), will incorporate a planted up Bioscapes NatureArk™, an innovative habitat for small mammals, hedgehogs and amphibians.

A stunning Allotment garden feature, designed by multi-award winners Jon Wheatley and Terry Porter, will be full to bursting with take-home ideas on how to get the very best from your plot.

As well as all of the fun of the Spring Fair, tickets to the event include access to the beautiful gardens and grounds of Beaulieu itself. The Victorian Flower Garden will be bursting with the beautiful blooms of early summer along with a magnificent collection of English roses, some planted in the late 1800s. The breath-taking Wisteria and Laburnum arch will be hitting its peak and will be the perfect spot for a photo to commemorate the day. The carefully cultivated produce in the Victorian Kitchen Garden, the delightful Mill Pond Walk and Beaulieu Abbey ruins are also not to be missed. The more adventurous may want to take to the skies on the 'skytrain' Monorail which provides a bird's eye view of the estate or little ones will discover big fun in Little Beaulieu, an enchanting new play area modelled on Lord Montagu's ancestral home, Palace House.

For more information please visit bbcgardenersworldfair.com

For images please download [HERE](#)

ENDS

NOTES TO EDITOR

The BBC Gardeners' World Spring Fair takes place from Friday 28 – Sunday 30 May 2021 at Beaulieu, New Forest, Hampshire. Find out more at bbcgardenersworldfair.com.

Media Contact: Jess Cook - 07810 771177 Jess@silverballpr.com

Press Accreditation: Please visit [HERE](#)

NB: Please note that press passes are limited and applications must be made by **Sunday 16th May**

Event Contact: Sarah Sandys-Renton – 07500 762168 ssr@riverstretevents.co.uk

In the event that either BBC Gardeners' World Fair is postponed, cancelled or Immediate Live (the trading name of Upper Street Events Ltd & River Street Events Ltd) deem it unsafe to run the event in light of UK Government and Public Health England guidelines regarding Covid-19, visitors will be contacted directly with regards to transferring their booking to a future date or requesting a refund. Refunds exclude the transaction fee.

<https://www.bbcgardenersworldlive.com/spring-fair/keeping-you-safe-at-the-spring-fair>

BBC Gardeners' World Fairs are organised and presented by Immediate Live (the trading name of River Street Events Ltd). The Gardeners' World logo is a trademark of BBC. © BBC. Licenced by BBC Studios



Licensed by BBC Studios. BBC Studios is the main commercial arm and a wholly owned subsidiary of the British Broadcasting Corporation (BBC). BBC Studios to support the BBC public service mission and to maximise profits on its behalf. It does this through investing in, commercialising and showcasing content from the BBC brand overseas and champions British creativity.



With thanks to:



About Hillier:

“To inspire the creation of green living spaces for now and the future”

The company was founded in 1864 by Edwin Hillier and remains a family-run nursery with the fifth generation now actively involved in the family business as it continues to grow. The company employs over 700 staff across its wholesale nursery, amenity trees and 18 Garden Centres and grows over one million plants a year. It is the largest tree grower in the UK.

Hillier is the most successful exhibitor in the history of the RHS Chelsea Flower Show, having been awarded 74 consecutive gold medals.

Over the years, Hillier has been responsible for numerous plant introductions, many of which have become essentials in British gardens and it continues with the tradition of innovation and the introduction of new garden plants in the present day.