



SPAWER

HEAT PUMPS FOR SPAS



***The ultimate solution to reduce
your spa's running costs***



**Up to 75%
energy savings**
compared to a standard heater

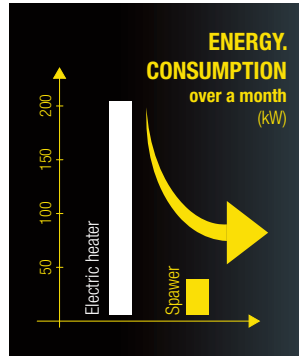


**Reversible
Hot / cold**



Remote control
with a phone app

4 good reasons to choose a Spawer



1. Reduce your energy consumption

Enjoy to use your spa while reducing your electricity bill

Expect over € 500* of electricity over a year when your spa water is heated with the integrated electric heater as it consumes around kW 2,444.

When using a Spawer heat pump, your spa's average consumption is considerably reduced down to kW 420*. You therefore save around € 400** per year and your heat pump quickly pays for itself.

* Approximate estimate for a 5-person spa with a 1,000-litre volume.

** Estimate for a heat pump with an average COP of 5.



2. Plan your session

Control your spa's temperature from a distance with the Smartlife app

Connect yourself when away from home and plan your relaxation session for the evening. You can change water temperature, mode (heating/cooling) and timing before you even get home.

3. An ideal temperature all year-round

With the reversible mode, cooler water when it is warmer outside

Spawer is your companion in the winter to heat up your spa while saving on energy consumption and in the summer to cool down your spa water. No need to add cold water to your spa any more. Spawer can be adapted to your needs.



4. Special Chiller function on the O'Spa

O'Spa, efficient in chiller mode

The "Chiller" function effectively cools down the water, providing a refreshing bathing experience with a drop in temperature up to 3°C. Ice bath therapy is increasingly recognised as a way of harnessing the body's natural recuperative powers.



ENJOY YOUR SPA

Hot ⚡ Cold

HEATING



38°C

For a relaxing moment over the weekend...

COOLING

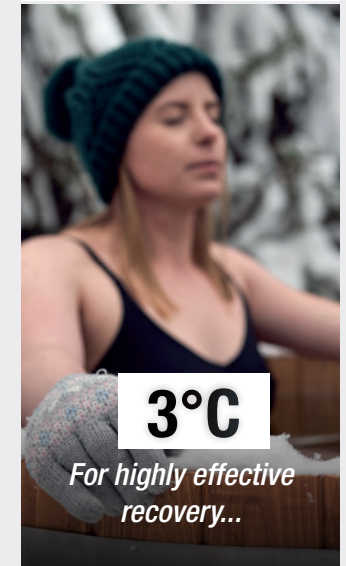


28°C

For a sporting moment in the week...

CHILLER

O'Spa only



3°C

For highly effective recovery...

All in one !

AUTOMATIC MODE

Your heat pump will reach and maintain the required temperature by selecting its own mode of operation (heating / cooling).

INTEGRATED WIFI

Your connected heat pump can be controlled remotely, as you wish, using the Smartlife app.

STAND-ALONE INSTALLATION

2 relays available and compatible with the spa's range of control systems

HEATING RELAY

Your heat pump, in extreme weather conditions, will decide or not to use the existing heater

PUMP RELAY

Your heat pump will control the auxiliary circulation pump, making your installation fully stand-alone

MOST EFFICIENT HEAT PUMP



	Max. heating capacity	COP
Air -10°C/ Water 38°C	3.3 kW	2

AT -10°C, the heat pump avoids all use of the electric heater

The IceSpa is a heat pump for spas especially conceived for the most extreme climate, the most powerful on the market at low temperature: 3.3 kW at Air -10 / Water 38°C thanks to its EVI (Enhanced Vapour Injection) compressor.

With a COP of 2, even at -10°C the IceSpa is 2 times cheaper than the electric heater.

Operating down to -25°C, you can heat your spa right in the middle of snow peaks and enjoy the view in complete peace. Its Full Inverter technology will reduce your energy consumption up to 75% at an equivalent power consumption compared to an electric heater! Easy to install, the IceSpa is compatible with all hot tubs and connects itself as easily.

Ideal for swim spas and nordic baths, this heat pump will exceed your expectations.

ICESPA 5kW 7kW

The power of Full Inverter & EVI efficiency right down to -25°C



Ideal all seasons



Control through a wifi connection

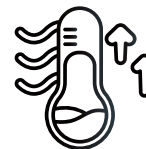


Reversible hot/cold



Remote touch screen

EVI TECHNOLOGY



L'EVI (Enhanced Vapour Injection) improves the **energy efficiency** of refrigeration and air conditioning systems by **injecting additional vapor** into the compressor at low temperatures.

It is thanks to this **innovative technology** that the Ice Spa is able to perform so well in **extreme weather conditions**.

FULL INVERTER TECHNOLOGY

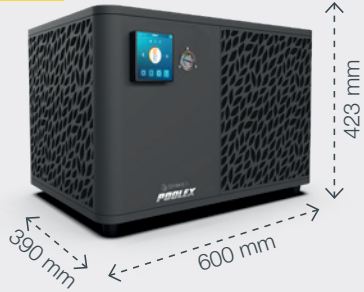
Full Inverter technology enables energy savings thanks to its capacity to automatically adjust its power and constantly modulate its compressor speed.

UP TO **75%** ENERGY SAVINGS
 compared to an integrated electric heater

COMPACT DIMENSIONS AND WIFI CONNECTION

Remote control

5kW



7kW



Remote touch screen

included with the 5 kW
 optional with the 7 kW



Hydraulic connecting kit*
 optional

* Non-contractual photos



Control relay
 as an option



5kW

7kW

Air 26°C Water 26°C Hygro 70°C	Output power	5.4 ~ 2.50 kW	7.2 ~ 2.90 kW
	Power consumption	1 ~ 0.2 kW	1.1 ~ 0.21 kW
	COP	5.3 ~ 13.9	6.7 ~ 13.81
Air -10°C Water 38°C Hygro 70°C	Output power	3 kW	3.3 kW
	Power consumption	1.5 kW	1.6 kW
	COP	2	2.2
Air 15°C Water 38°C Hygro 70°C	Output power	3.7~1.8 kW	4.6 ~ 2.21 kW
	Power consumption	1.2~0.3 kW	1.3 ~ 0.39 kW
	COP	3 ~ 5.6	3.6 ~ 5.67

Operating range	-25°C to 43°C	
Optimum flow (°/h)	2.31	3.01
Dimensions (cm)	60 x 39 x 42.3	71 x 49 x 50
Noise level at 10 m (dB)	< 32	< 34
Hydraulic connections (mm)	1" male / ø32 - ø38 (connectors provided)	
Operating modes	Heating / Cooling / Auto	
Warranty	3 years	



COMPACT AND EFFICIENT

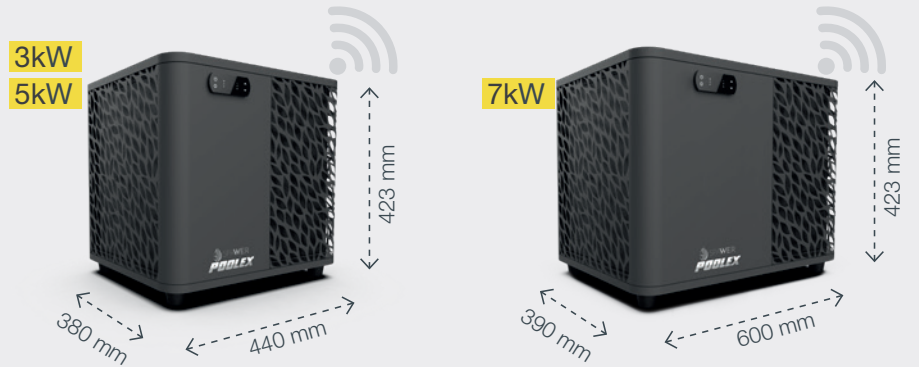
O'Spa is a heat pump for spas that can save you up to **75% in energy consumption** when heating your spa compared to a conventional electric heater (at an equivalent power consumption).

The O'Spa can be installed on any type of hot tub and nordic bath to take over the existing electric heater and **optimize the heating** your spa. You only need to connect it and **its relay will manage the electric heater** initially integrated to the spa.



COMPACT DIMENSIONS AND WIFI CONNECTION

Remote control



O'SPA 3kW 5kW 7kW

Ultra versatile heat pump for spas

- Ideal in hot and temperate climates
- Reversible hot/cold
- Control through a wifi connection
- Ultra compact

+ **INTEGRATED CHILLER FUNCTION**



Remote touch screen
(optional)



Hydraulic connecting kit*
(optional)



Control relay
included

* Non-contractual photos

NEW FUNCTION

THE CHILLER



O'SPA DUAL FUNCTION

O'Spa is the essential choice for wellness enthusiasts, offering a dual function: heating and cooling.

The **Chiller function** effectively cools the water, providing a **refreshing bathing experience** thanks to a drop in temperature of up to **3°C**.

Ice bath **therapy** is increasingly recognised as a way of harnessing **the body's natural recuperative powers**.

BENEFITS INCLUDE:

- ✓ Improved blood circulation
- ✓ Reduced arterial hypertension
- ✓ Reinforced immune system
- ✓ Muscular recovery
- ✓ Relaxation and stress reduction

The **heating function** increases the water temperature, saving up to **75% energy** compared to a conventional electric heater. The O'Spa can be fitted to all types of spa and Nordic bath, optimising the temperature rise of your spa for optimum comfort and experience.

This unique dual function makes the O'Spa a high-performance, versatile **piece of equipment**, that meets the demanding needs of users, whatever their environment.



3 kW

5 kW

COMING SOON

7 kW

Recommended climate	Hot	Temperate		
Air 26°C Water 26°C Hygro 80°C	Output power	3 kW	5 kW	7 kW
	Power consumption	0.58 kW	0.97 kW	1.35 kW
	COP	5.15	5.2	5.2
Air 15°C Water 38°C Hygro 70°C	Output power	1.8 kW	3.3 kW	3.90 kW
	Power consumption	0.6 kW	1.1 kW	1.39 kW
	COP	2.77	3	2.80
Air 35°C Water 27°C Hygro 70°C	Output power	1.5 kW	2.9 kW	3.50 kW
	Power consumption	0.53 kW	1 kW	1.38 kW
	EER	1.8	2.9	2.5
Chilling time for 200L of water from 23°C to 5°C.	5 h	3 h	2 h	
Operating range	-7°C to 43°C			
Optimum flow (³/h)	1.30	2.16	3.01	
Dimensions (cm)	44 x 38 x 42.3		60 x 39 x 42.3	
Noise level at 10 m (dB)	<30	<32	<34	
Hydraulic connections (mm)	1"male / ø32 - ø38 (connectors provided)			
Operating modes	Heating / Cooling / Auto			
Warranty	2 years			

CHILLER MANIA



NEW

**O'SPA
CHILLER**

More information on our website:

poolstar.fr/en