

# Shell Scheme Enhancements

The fundamental components





Contents:

# WELCOME TO SHELL scheme enhancements

From eye-catching graphics and advanced AV technology to stylish furniture and green solutions.

Our team handles all the details, so you can focus on impressing your audience and maybe even have a little fun in the process!

Click to discover:



P3

Our Services

P5

Meet The Team

P10

Happy Customers

P6

Get In Touch

P11





Section: 01a

# born collaborators

This is our core brand idea.  
It sums up how we work and gives a promise of  
what the Full Circle experience will be like.

you've got this.  
we've got this.

---



Section: 01b

Need a team that's all-in  
on making it great?

Behind every  
successful exhibitor  
is a committed team.



Exhibiting can be tough, making sure it  
all comes together can be daunting –  
BUT - navigating it with a trusted supplier  
makes all the difference.

Whether you know exactly what you want,  
or need someone who can get you excited  
about your options, we have the expertise  
to stretch your budget as far as it'll go.



**We know you have a lot  
riding on this but working  
in events should be fun  
- so we're here to make  
sure you feel supported  
at every step!**

Section: 02

# Our Services



## graphics



Want your brand to dazzle? We offer a wide array of graphic solutions to make your brand shine. From sleek, seamless, gel-edge fabrics to panel graphics, we ensure your message is clear and impactful.

## av



Whether you need large screens, interactive displays, or sound systems, we've got the technology to enhance your stand's visual and auditory appeal covered!

## furniture



From contemporary seating to functional display units, our furniture is designed to complement your stand's aesthetic while providing a welcoming space for your visitors.

## electrics



Lights, power, action! We handle all your electrical needs, from lighting to power supplies, ensuring your stand is fully functional and compliant with safety standards.



# happy customers

“Working with Full Circle for the London Book Fair 2024 was a great experience. Their team did an amazing job delivering and finishing our stand on time. They communicated well and were quick to answer any questions we had. We’re really happy with their service! ”

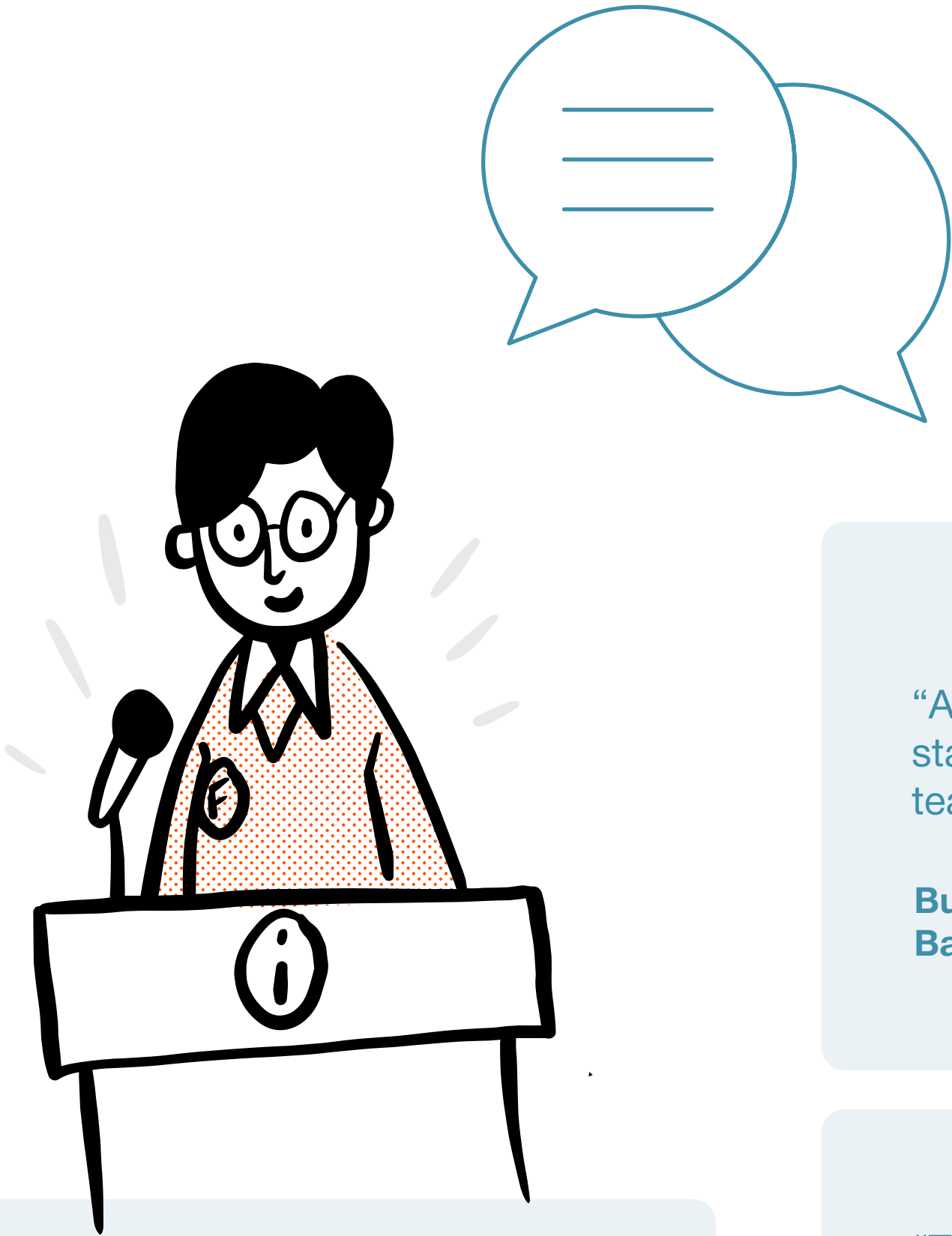
**Imago Group,  
London Book Fair**

“Our stand graphics were the best they’ve been in years at MPTS, so clean and tidy and very high quality.”

**GB Labs,  
Media Production Show**

“Working with Full Circle has been an outstanding experience from start to finish. Their customer service is exceptional, guiding us seamlessly through the design process and ensuring every detail was perfect. Their responsiveness during setup and preparation for the show was impressive, making the entire process stress-free. Thanks to Full Circle, our exhibition booth not only looked fantastic but also exceeded our expectations in functionality and impact. We highly recommend them for any business looking to make a strong impression at industry expos.”

**Très Chic Bridal Wear,  
Harrogate Bridal**



“Thank you for all your help, everything went smoothly and we were all very happy with how it looked!”

**School Advice,  
BIBA**

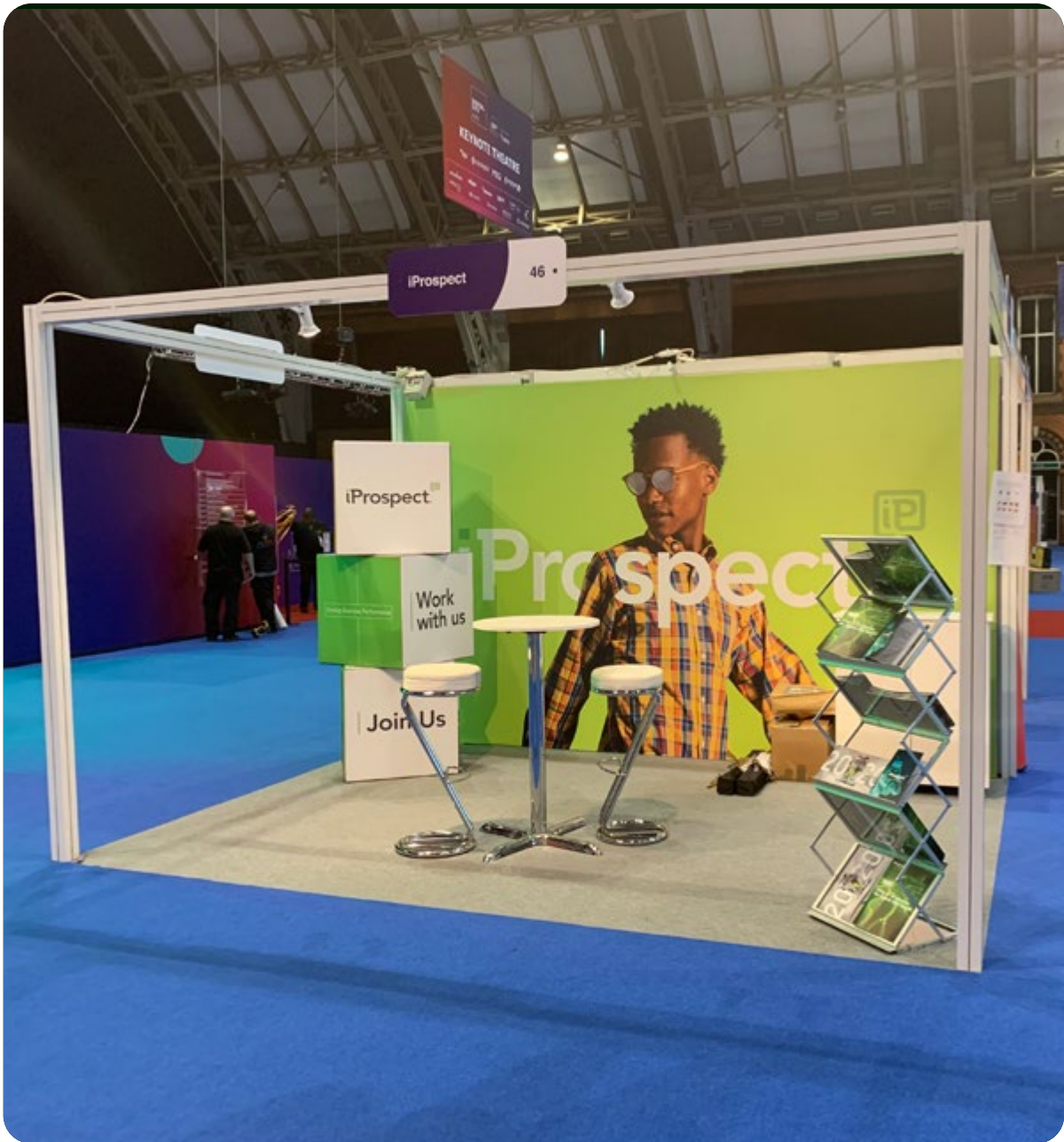
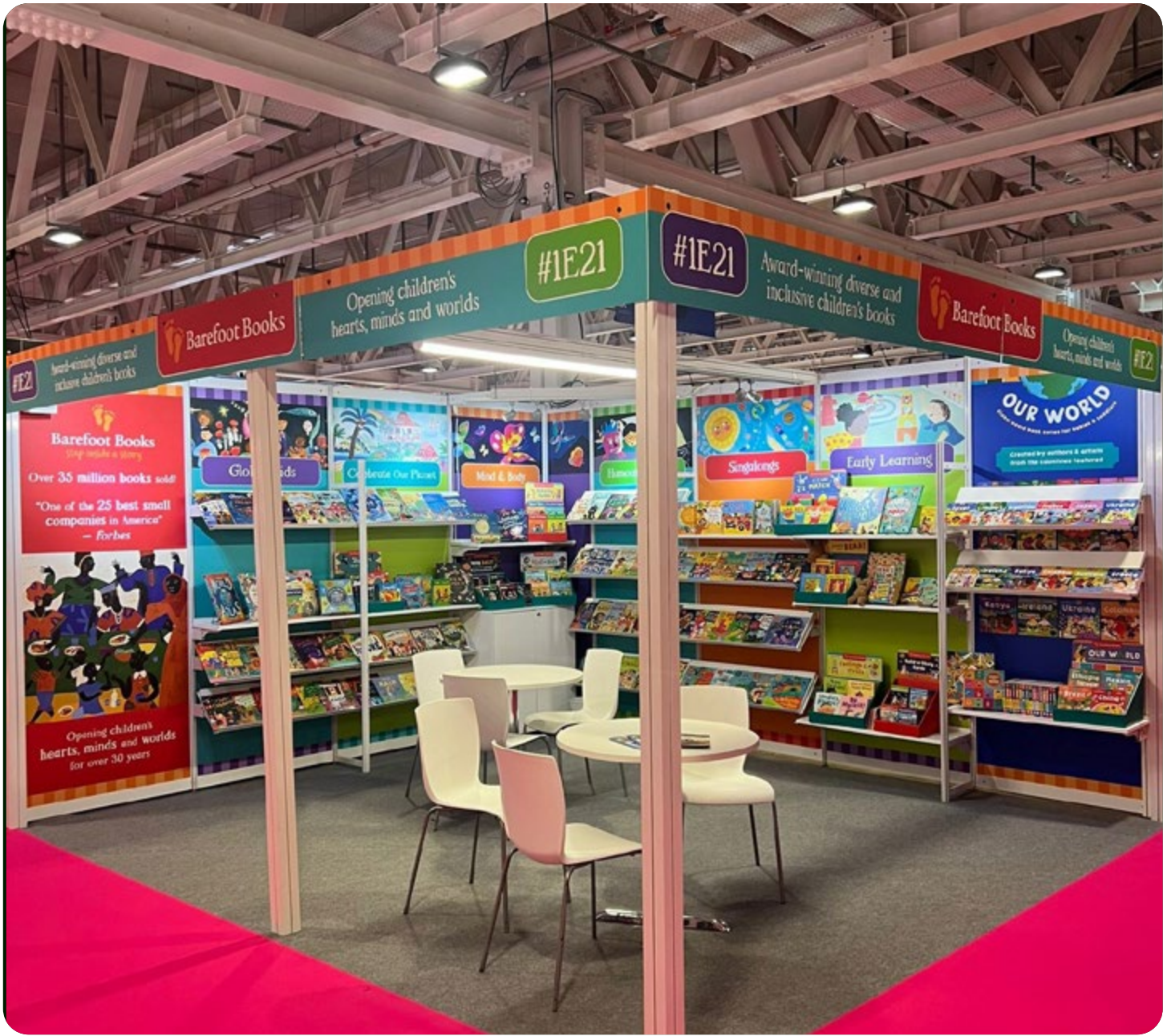
“All went very well with the stand, thanks to you and the team’s efforts!”

**Business and trade,  
Battery Tech**

“The stand, just as before, looked great, exactly having the impact I wanted with the bold graphics.”

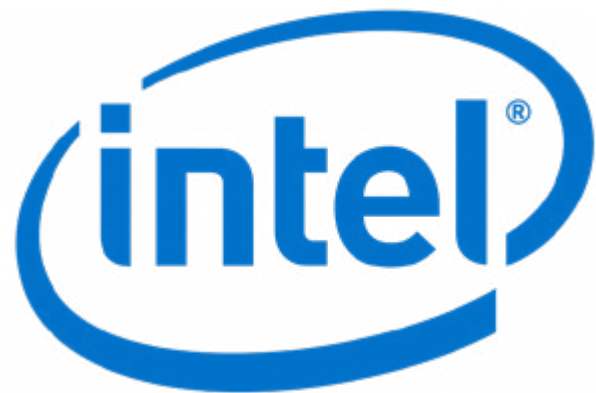
**Studio Finder,  
Media Production Show**







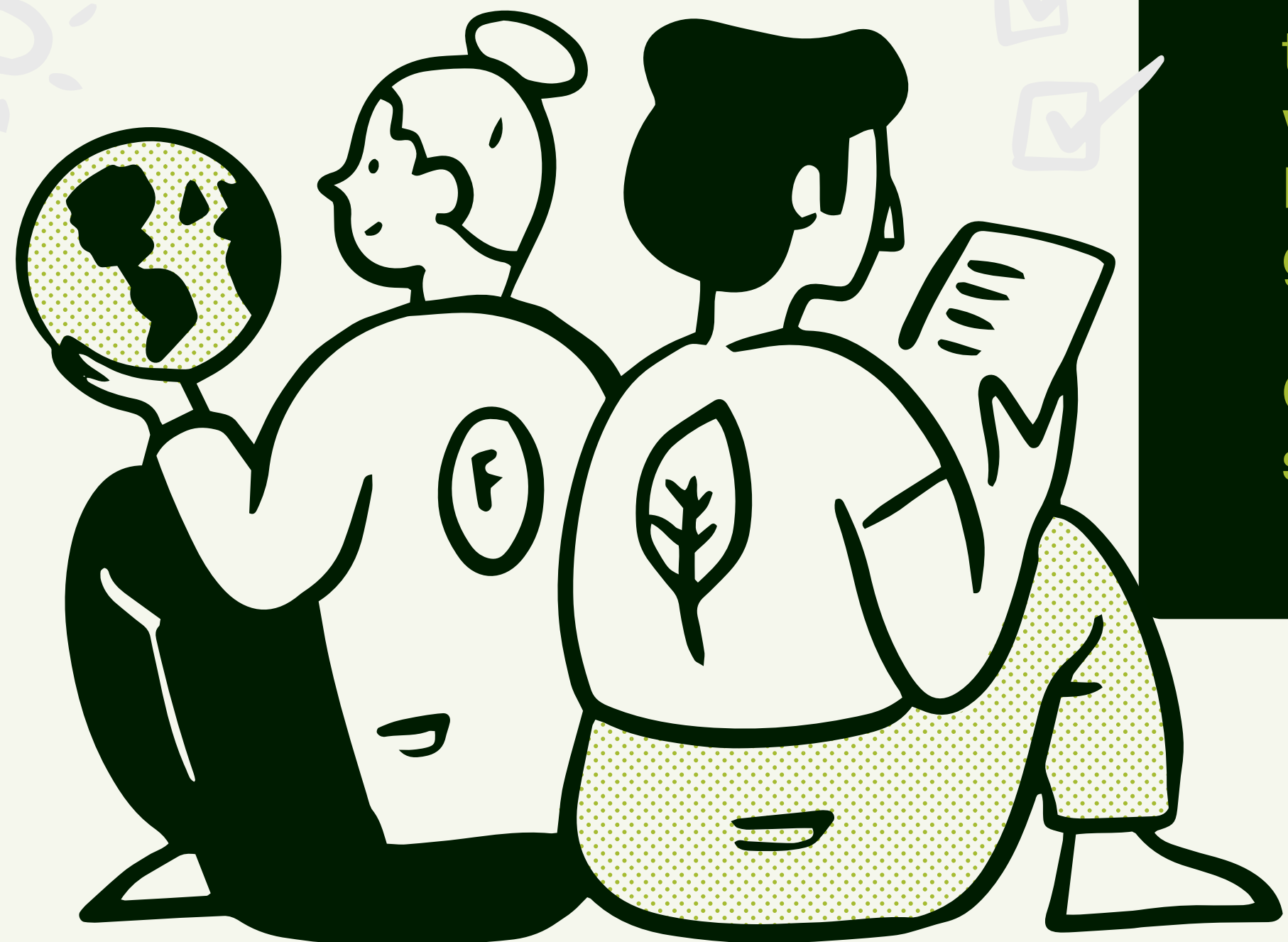
# happy customers





# Sustainable Supplier

**We've woven eco-friendly practices into every part of our business, from the way we power your stand to the materials we use.**



**We're not just talking the talk; we've walked the walk- all the way to a Tier 5 ESSA accreditation for our green efforts!**

**Curious about how your stand is making a difference?**



## electrics & Lighting

We only use LED lighting kits, which **reduce consumption by 80%**, as well as reducing the need for frequent replacements.

## graphics & Signage

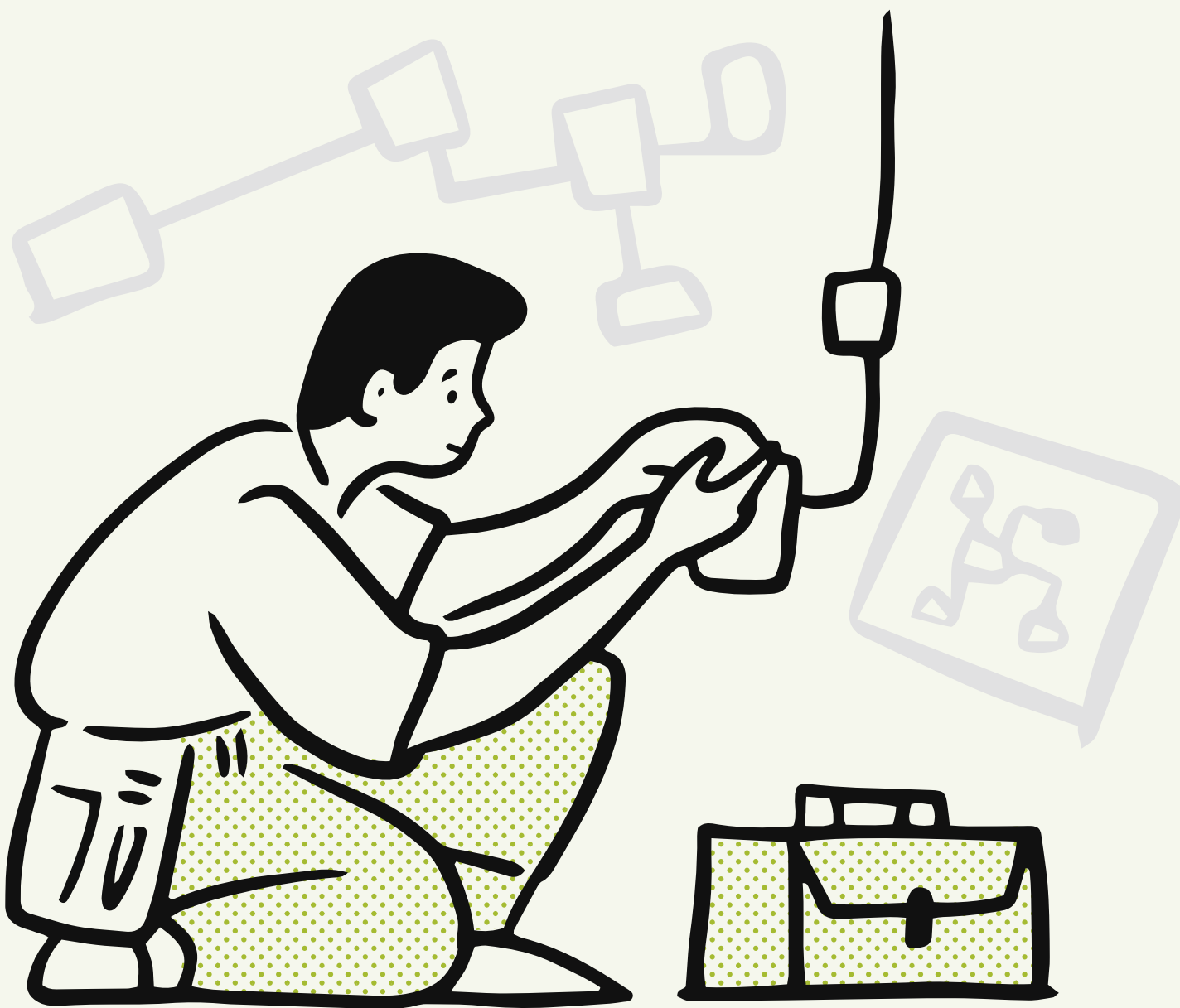
With an in-house graphics division, we offer a variety of sustainable solutions, from our foamex panels to our gel-edge graphics, we utilise sustainable materials, **which we repurpose or repulp.**

## Our Furniture

Our furniture is designed for lasting quality and sustainability, built to impress event after event. **Take the Milan bar table, for example - after 7,000 uses, it still looks and performs like new.**

## FLOOR COVERING

All of our flooring solutions are recyclable after use. We also are proud to offer our most sustainable solution yet, Rewind Carpet. These heat-bonded carpets **require 85% less energy when being made**, reducing CO2 emissions by 55%.





# We're here to help!



We know you have a lot riding on this but working in events should be fun- so we're here to make sure you feel supported at every step.

Drop our team a line.



**Jess Hale**

- 40% Gig enthusiast
- 15% Shell enhancements solutionist
- 10% Leopard print
- 25% Meticulous
- 10% Cymru am byth!



**Rosie Smith**

- 30% Film Fan
- 25% Diet Coke Addict
- 20% Detail Oriented
- 15% Pub Lover
- 10% Positive Thinker



**Darren Leasley**

- 20% Nandos
- 20% Football
- 20% Music
- 20% Shell Scheme
- 20% Exhibitor Enhancer



**Billy O'Hanlon**

- 25% - Outdoorsy
- 20% - Hard Working
- 20% - Concert Goer
- 20% - Footy Fan
- 15% - Resilient



**Amber Anderson**

- 30% Raver
- 25% Shopaholic
- 20% Go getter
- 15% Prosecco enthusiast
- 10% Perfectionist





**We go together  
Like rama-Lama  
Lama-ka-ding  
da-ding-dong**

**Say Hello!**



**Manchester | Yorkshire | Midlands | Scotland**

**Phone: 0161 393 3949**

**Email: [eehub@fullcircleeventsltd.co.uk](mailto:eehub@fullcircleeventsltd.co.uk)**

