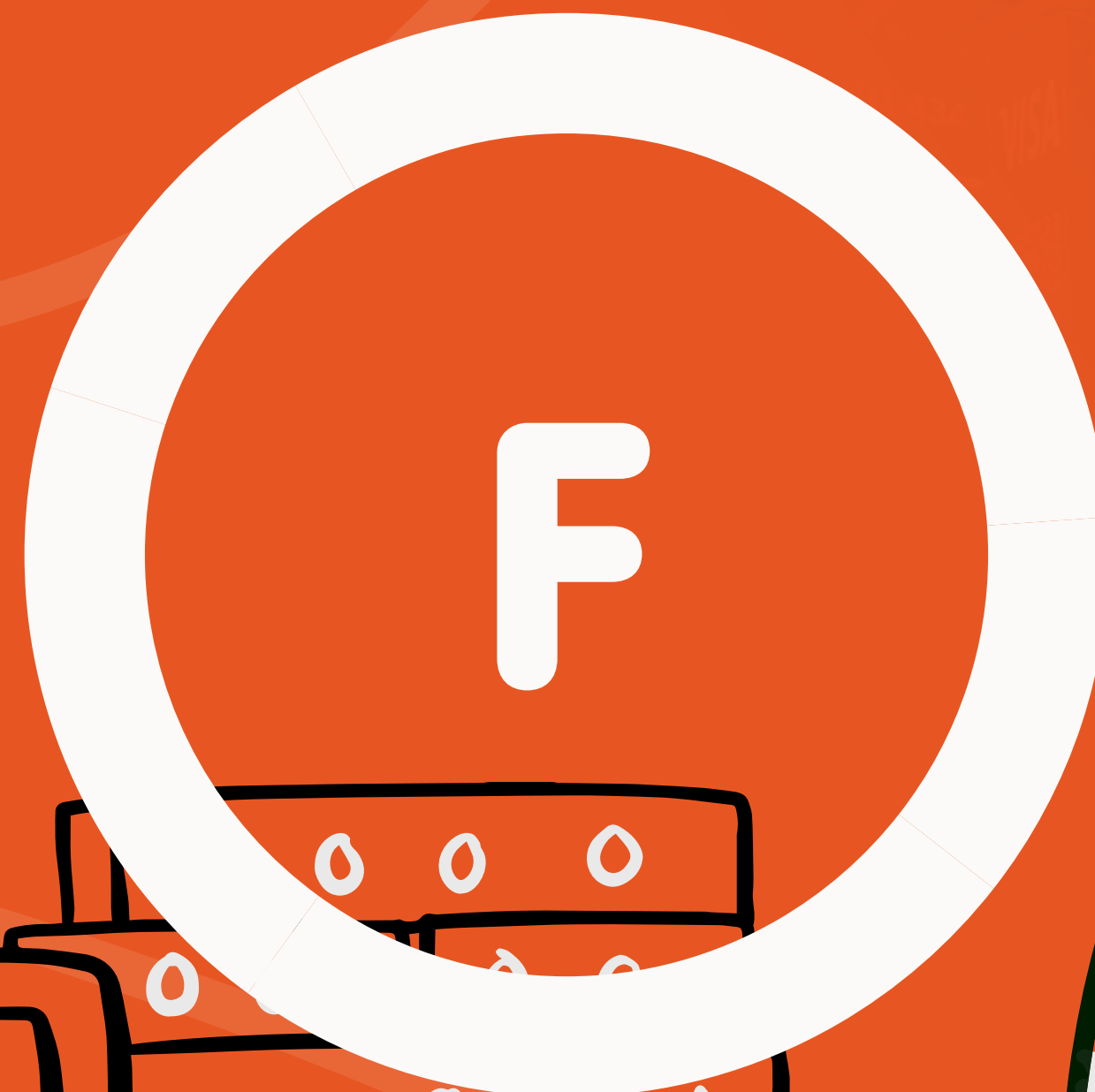


# Show Ready

Our modular solution  
to your exhibition stand.





Contents:

# WELCOME TO Show ready

Our Show Ready solution offers a cost-effective, off-the-shelf design with zero hassle - ideal for busy professionals. It blends convenience with sustainability, using recycled materials and creatively repurposed stock items. Fully accredited by ESSA, it delivers both efficiency and eco-consciousness without compromise.

Click to discover:

P3

Ready To Go?!

P4

Ready-to-roll Solution

P5

We Handle It All

P6

Paterning With Us

P8

P9

Our Graphics

P12

Happy Customers

P14

Meet The Team

P17

Get In Touch

P18





Section: 01

# born collaborators

This is our core brand idea.  
It sums up how we work and gives a promise of  
what the Full Circle experience will be like.

you've got this.  
we've got this.

---



# Ready to go?!



## We're all about making green the new gold!

**Our mission? Eco-friendly products and a solid push toward net-zero goals.**

With state-of-the-art equipment and cutting-edge production, we're setting the standard for sustainable stand-building.



And to keep things crystal clear, our carbon calculator gives clients a sneak peek into their stand's CO2 footprint - no surprises here! It is all about transparency and doing our part for the planet.



Section: 03

# Show ready

## Our ready-to-roll solution.

Our aluminium frames are perfectly designed for any stand size or location, tailored just for you! Dive into our Show Ready packages for high-quality, customisable stands.

They are:

big ideas

big results



Perfectly designed for any stand size or location, tailored just for you!



Section: 04

# From blueprint to build, we handle it all.



At Full Circle, we pride ourselves on being the complete solution for all your event and exhibition needs.

Show Ready is designed for those who want a stand that just works - without the hassle.

**We have the experience and resources to bring your ideas to reality.**









Section: 05

Partnering with us gives you

# generations OF KNOWHOW

Our dedicated Show Ready team is here to handle every aspect of your stand build, so you can kick back and relax while we take care of it all, **including:**

## Graphics

Our specialised graphics production and installation team ensures your stand graphics are in expert hands.

## Flooring

Choose from a variety of flooring solutions - Rewind, Velour, and Vinyl - customised to fit your needs.

## Electrics & Lighting

Our in-house electrical pros will help you determine the right power requirements for your stand.

## Audio Visual

Whether you require a simple LED screen mounted on to your stand, a laptop or ipad, to a full video wall. We can support on all your audio visual and technical needs.

## Furniture

Choose from a sleek range of modern, high-quality furniture tailored to match your brand and needs. After something unique? We've got you covered- with bespoke pieces like coffee machine counters, product displays, and more.





Section: 06

Take a sneak peek behind our

# Sustainable Scenes

At Full Circle, we're all about continuously reviewing and improving our practices to champion sustainability. Here are some fantastic ways your Show Ready stand is eco-friendly.

**Want to learn more? Just ask our team!**





## FLOOR COVERING

All of our flooring solutions are recyclable after use. We also are proud to offer our most sustainable solution yet, Rewind Carpet. These heat-bonded carpets require **85% less energy** when being made, reducing CO2 emissions by 55%.

## Waste Management

We work closely alongside a waste management provider who ensures our waste is recycled and reused where possible.



## ELECTRICS & LIGHTING

We only use LED lighting kits, which reduce consumption by 80% as well as reducing the need for frequent replacements.

## FURNITURE

Designed for repeated use at numerous events, our furniture reflects our commitment to sustainability.

Take our Milan Bar Table for example, each year this product line is used of 7,000 times!





# OUR MODULAR FRAMES

## ecovision!

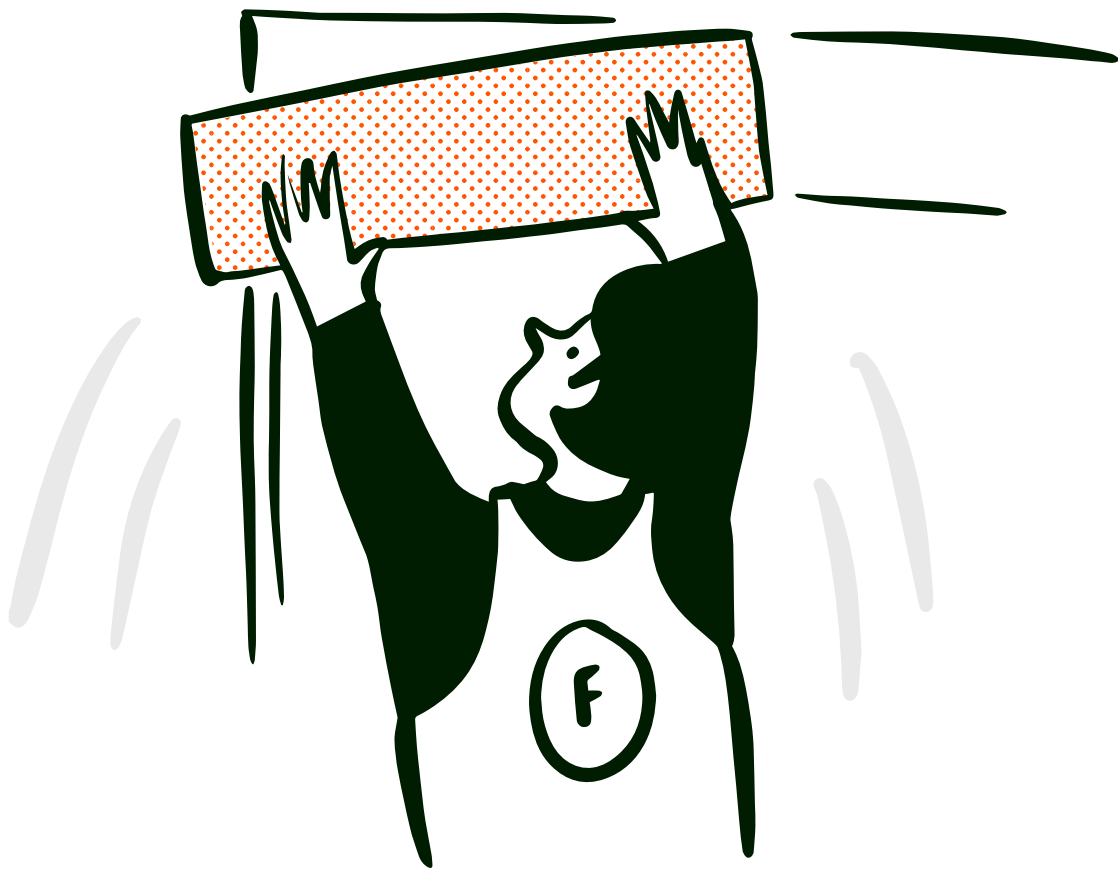
**To promote sustainability, we've invested in a modular stand system made from 100% reusable and eco-friendly materials, specifically aluminium.**

As one of the planet's most abundant metals, aluminium offers durability, lightweight properties, and a long lifecycle. Its ability to be fully recycled ensures that our stands are not only sustainable but also have minimal environmental impact over time.

This approach reflects our commitment to reducing waste and supporting circular economy practices, allowing us to create long-lasting, eco-conscious solutions for our exhibitions.







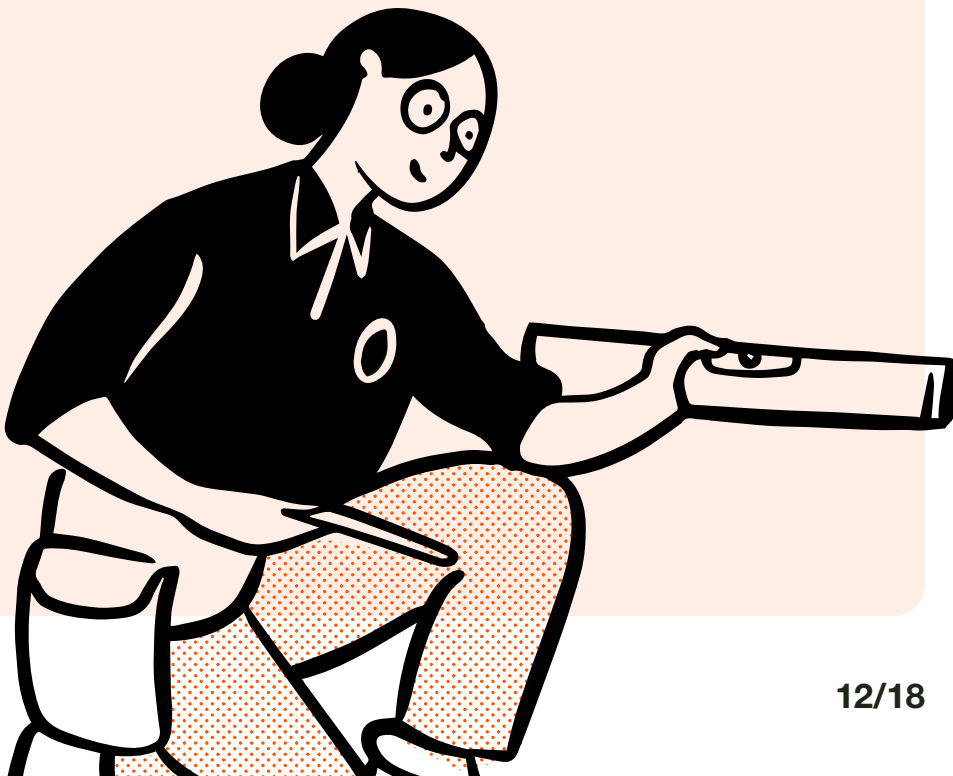
# Our graphics & signage



We use cutting-edge machinery with **100% water-based LED inks** and PVC-free materials.

Our dye sublimation printer means graphics can be folded compactly, which lightens the load and saves space on trucks - **goodbye, transport emissions!**

**Plus, our specialised installation team works efficiently, so we get the job done with fewer hands-on deck, giving our sustainability efforts an extra boost.**







# OUR BLACK BACK FABRICS





The material we predominantly use for our gel-edge graphics is crafted from 100% warp-knitted polyester, made using recycled yarns, contributing to a more sustainable product.

Designed with slight stretch properties, it is ideal for use in frame and pop-up materials. Additionally, the fabric is PVC-free and phthalate-free, aligning with eco-friendly standards. The dyeing process utilises latex, paper dye, direct dye, and UV dyeing methods, enhancing both environmental responsibility and product quality.

### Features

-   
PVC Free
-   
Phthalate Free
-   
Full Opacity
-   
Slight stretch

### Ink Printability

-   
DYE Paper
-   
DYE Direct
-   
UV
-   
Latex



# happy customers

## Altour

We designed a sleek, bold display with modern flair - catching eyes without shouting for attention. Think of it as the well-dressed guest who effortlessly works the room.

Stylish yet professional, it was the ideal spot for networking and making valuable connections.



← Back to Explore



“Partnering with the Full Circle team for our debut at the Business Travel Show was an absolute pleasure. The sales team took the time to understand our vision and explored creative options that fit our budget perfectly. We had ambitious goals, and Full Circle brought them to life flawlessly. The project team made the entire process stress-free and seamless, considering every detail—right down to adding plants to enhance the aesthetic of our stand. The onsite delivery was exceptional; we didn’t even need to be there for setup, as they had everything under control. Full Circle felt like a true extension of our team, supporting us every step of the way. Thank you for being brilliant!”

**Head of strategic development,  
Altour**



# happy customers

## Steel & Alloy

Steel & Alloy's debut at UK Metals was a resounding success, thanks to strategic planning, an eye-catching stand, and strong client engagement.

Our sustainable, visually appealing design facilitated meaningful interactions, built new relationships, and boosted visibility across industries, leaving a lasting impact long after the event.



[← Back to Explore](#)



“The stand surpassed our expectations, and it was a complete pleasure to work with the team, as we embarked into the unknown world of trade shows.

Full Circle's professionalism and support played a crucial role in the positive outcome of Steel & Alloy's first experience, and we would have no hesitation in using their services again.”

**Commercial Manager,  
Steel & Alloy**





Section: 07

# happy customers

## MADI Lane

For the Harrogate Bridal Show, Madi Lane wanted a stand that reflected the elegance of their latest dress collection.

The layout facilitated smooth traffic flow and showcased the stunning new trends, creating an atmosphere of luxury and refinement while encouraging buyer engagement.





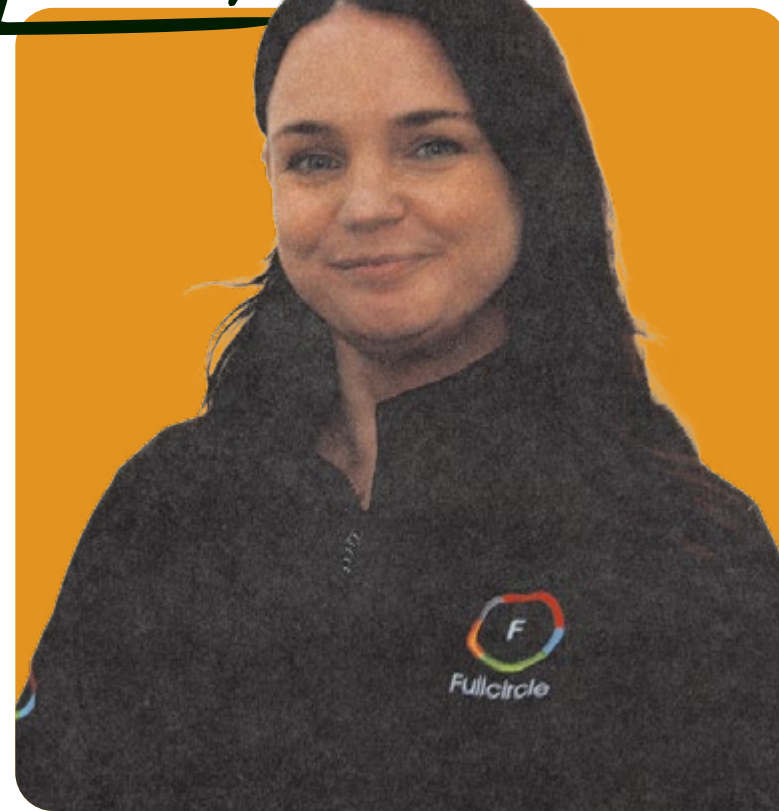


# We're here to help!



**Rachel Thomas**

- 30% Sales
- 25% Social
- 20% Wine
- 15% Chatterbox
- 10% Chocolate Lover



**Caroline Higgins**

- 50% Boy Mum
- 20% Organised
- 10% Early Bird
- 10% OCD
- 10% Cocktail Lover

Feeling swamped? Our team are here to help, perfect for busy professionals, we combine ease with sustainability.

**Drop our team a line.**



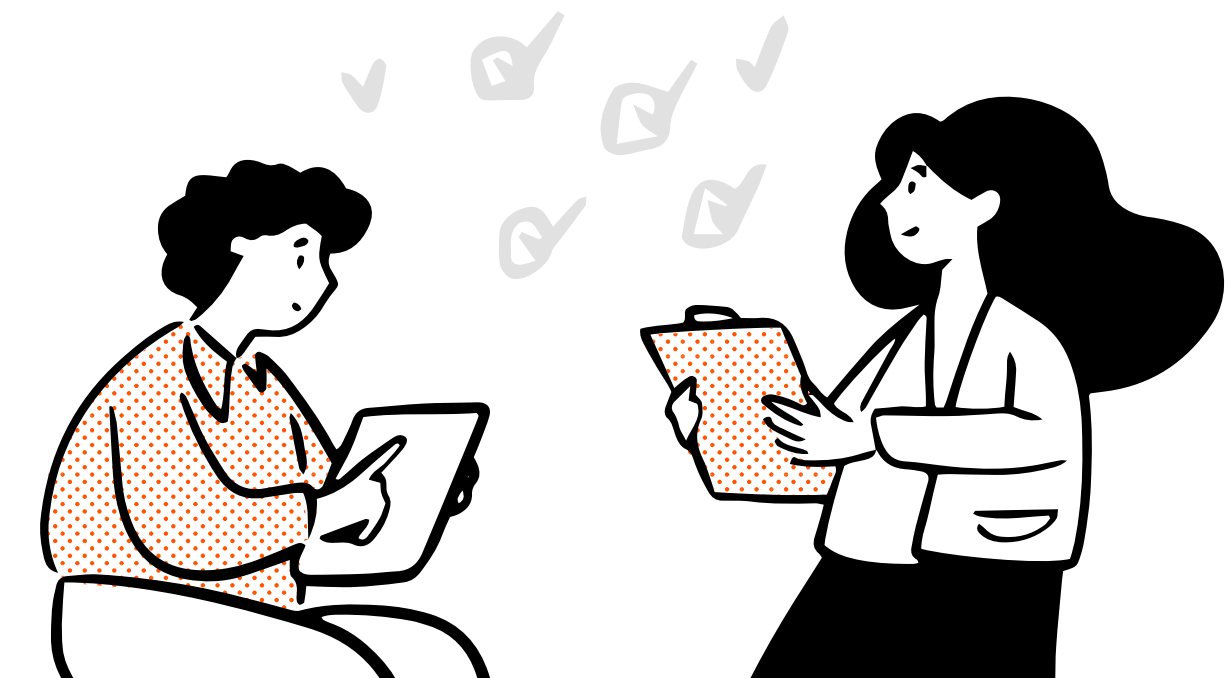
**Jess Beer**

- 40% Onsite Queen
- 20% Determination
- 20% Enthusiastic
- 10% Cheerleader
- 10% SLAY



**Chloe Jones**

- 30% Red Bull Drinker
- 25% Car Cleaning Enthusiast
- 20% Beach Lover
- 15% Foodie
- 10% Perfectionist





We go together  
Like rama-Lama  
Lama-ka-ding  
da-ding-dong

Say Hello!



Manchester | Yorkshire | Midlands | Scotland

Phone: 0161 393 3949

Email: [showready@fullcircleeventsltd.co.uk](mailto:showready@fullcircleeventsltd.co.uk)

