

**\sifted/**

**SUMMIT**

**2-3 OCT • LONDON**

**EVENT SUSTAINABILITY**

**#SIFTEDSUMMIT | [summit.sifted.eu](https://summit.sifted.eu)**

At Sifted, our core values revolve around accountability and making a positive impact on the environment. The sustainability policy of **Sifted Summit** focuses on minimising our event's carbon footprint and reducing waste. Here's what Sifted Summit is committed to:

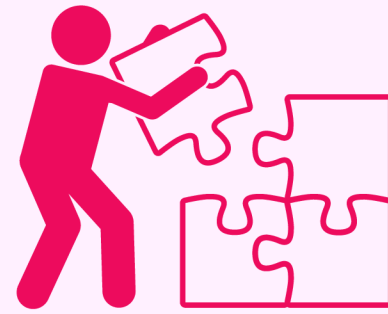
- Reducing carbon emissions across our event deliveries as far as possible, incorporating company growth to adjust targets
- Committing to support the goal of net zero greenhouse gas (GHG) emissions by 2050
- Reducing waste across all event deliveries with a commitment to operating circular events by 2035
- Measuring greenhouse gas emissions and disclosing our progress each year

While the road to our objectives may be long, we are enthusiastic about fostering a more eco-friendly event in with collaboration our suppliers, speakers, partners, attendees and all stakeholders.

To achieve our commitments, here are the primary areas where we are concentrating our efforts:



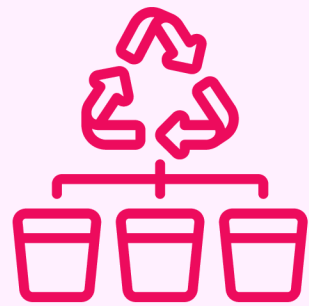
**Energy**



**Production**



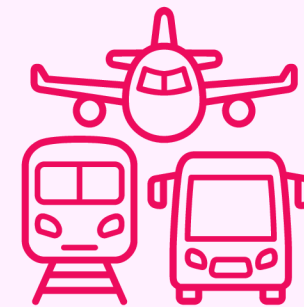
**Catering**



**Waste  
management**



**Event  
transportation**



**Audience and  
staff travel**

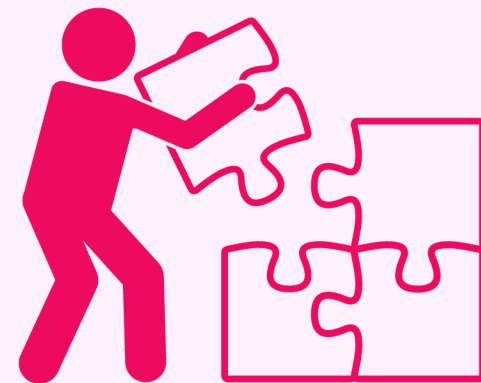


**Measuring and  
reporting**



## Energy

At Sifted Summit, we work with a venue with 100% renewable energy and collaborate with suppliers to minimise energy use throughout the event.



## Production

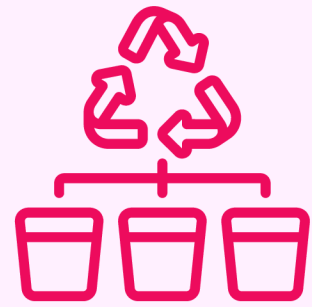
Throughout the procurement and production process, we work closely with our suppliers, giving priority to sustainable materials, emphasising hiring over purchasing and promoting recycling over wastage.



## Catering

We partner with food vendors to provide a varied, environmentally friendly menu; red meat options are limited to reduce carbon emissions.

We also say no to single-use plastic – reusable or other recyclable options are provided. Attendees are encouraged to bring reusable cups or water bottles.



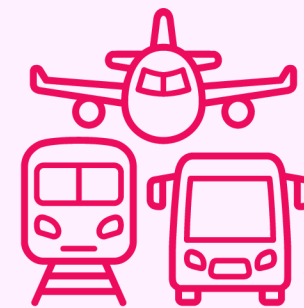
## **Waste management**

There is a segregated waste stream onsite, which includes providing clearly labelled bins for mixed recycling, general waste and food waste. We will also measure the carbon emission of all event waste post event.



## **Event transportation**

The number of suppliers is minimised to ensure the event transportation is efficient to avoid extra carbon emissions.



## **Audience and staff travel**

A venue that's close to public transport is chosen. We also encourage all of our attendees and internal staff to utilise public transport to travel to the event. We also partnered with Forest Bike to offer transportation benefits for our event attendees.



## **Measuring and reporting**

Sifted will use TRACE by ISLA to measure carbon emissions in the areas outlined in this policy and produce a post-event report to identify further improvements for 2025.

The below named person takes responsibility for coordinating the review of this policy, engaging all stakeholders in the process:

**Rebecca Hou**

Senior events manager, Sifted

With the full support of:

**Fiona Craib**

Events director, Sifted

We're excited to have you with us on our sustainability journey. If you have any feedback or suggestions on our sustainability policy, please feel free to contact [events@sifted.eu](mailto:events@sifted.eu)

Proud members of



Green transportation partner

**forest**