

KATE TROUW JEWELLERY - WHOLESALE PRICE LIST

Playful jewellery made by hand in a cliff-top studio on the Fife coast.



I think jewellery should be worn every day with confidence but also ease, so above all my designs are comfortable and versatile. As easy to wear to the park as the party.

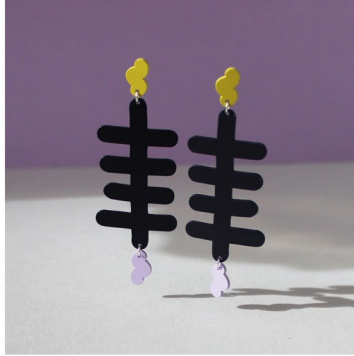
I use a variety of materials - beachcombed sea glass, coal and ceramic as well as aluminium, gemstones and silver. I hope that by recontextualising these humble materials we can start to see the value in the every day.

Selected stockists: National Galleries of Scotland, Collective Gallery, Dundee Contemporary Arts, Tate Modern, Baltic Centre for Contemporary Art.

"TATE has a great relationship with Kate. We have worked on exclusive ranges as well as buying in her own collection. She delivers on time and always excites our audiences. The ranges have always been very successful." Hannah Oxley, Tate Enterprises.

HOW TO ORDER / WHOLESALE TERMS

Visit www.katetrouw.com/wholesale and use the code **KTWS** to see what's available and either check out online or drop me an email.



Each piece is handmade in our studio so there may be some small differences between the images and your piece, unless the piece shown is one of a kind.

LEAD TIMES

Please allow me **FOUR WEEKS** to make, package your item and get it in the post.

MINIMUM ORDERS

The minimum order value is £300 for opening orders and £200 thereafter.

PAYMENT

Payment can be made by card or PayPal. You can checkout on the website or I can invoice you.

SHIPPING AND CARRIAGE PAID

Shipping is free for orders over £300.
Tracked shipping is a flat rate of £25 in the UK and £40 elsewhere.

Please note that any duties or taxes are the responsibility of the customer. If you are outside the UK it may take a while for customs to process your package. If your package is held up in customs please contact them directly.

RETURNS AND DAMAGES

Should any items be damaged when they reach you please send me an email with a photo and I will replace the item.

If for any reason you are not happy with your order please let me know within 14 days of receipt. Shipping costs cannot be refunded.

GIFT BOXES

All pieces will be provided in branded gift boxes. Earrings will be on branded earring cards within the box.

KATE TROUW

MIXED METAL COLLECTION



Simple Necklace
KT-MM-SP-NK
Aluminium, gold-filled
chain
Chain - 100cm
£28 (£70 rrp)



Cross Necklace
KT-MM-CR-NK
Aluminium, brass, copper,
silver chain
Chain - 100cm
£24 (£60 rrp)



Simple Earrings
KT-MM-SP-ER
Aluminium, gold-filled
chain, silver posts and backs
90mm (h) x 35mm (w)
£12 (£30 rrp)



Double Cross Earrings
KT-MM-DB-CR
Aluminium, brass, copper,
gold-filled chain, silver posts
62mm (h) x 14mm (w)
£16 (£40 rrp)



Combination Necklace
KT-MM-CO-NO
Aluminium, copper, silver
chain
Chain - 100cm
£26 (£65 rrp)



Hitch Earrings
KT-MM-HI-ER
Aluminium, copper,
gold-filled chain, silver posts
105mm (h) x 18mm (w)
£32 (£80 rrp)



Union Earrings
KT-MM-UN-ER
Aluminium, copper, silver
90mm (h) x 35mm (w)
£20 (£50 rrp)

KATE TROUW

SEA FLOOR COLLECTION



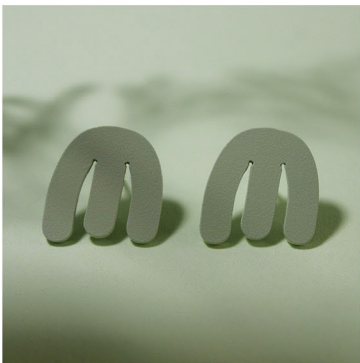
Coral Earrings (foggy green/sky blue)
KT-SS-CE-FS
Aluminium, silver, acrylic
72mm (h) x 36mm (w)
£24 (£60 rrp)



Coral Earrings (lavender/grass green)
KT-SS-CE-LG
Aluminium, silver, acrylic
72mm (h) x 36mm (w)
£24 (£60 rrp)



Cove Studs (deep blue)
KT-SS-CS-DP
Aluminium, silver, acrylic
17mm (h) x 15mm (w)
£10 (£25 rrp)



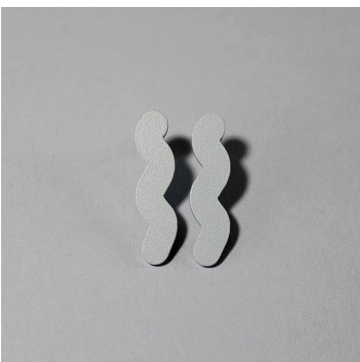
Cove Studs (foggy green)
KT-SS-CS-FG
Aluminium, silver, acrylic
17mm (h) x 15mm (w)
£10 (£25 rrp)



Current Drop Earrings (lavender)
KT-SS-CD-LL
Aluminium, silver, acrylic
75mm (h) x 7mm (w)
£20 (£50 rrp)



Current Drop Earrings (foggy green)
KT-SS-CD-FG
Aluminium, silver, acrylic
75mm (h) x 7mm (w)
£20 (£50 rrp)



Current Studs (sky blue)
KT-SS-CU-SB
Aluminium, silver, acrylic
25mm (h) x 7mm (w)
£10 (£25 rrp)



Current Studs (lavender)
KT-SS-CU-LL
Aluminium, silver, acrylic
25mm (h) x 7mm (w)
£10 (£25 rrp)



Double Reef Studs (grass green, turquoise)
KT-SS-DR-GT
Aluminium, silver, acrylic
38mm (h) x 15mm (w)
£14 (£35 rrp)

KATE TROUW

SEA FLOOR COLLECTION



Double Reef Studs (foggy green, lavender)
KT-SS-DR-FL
Aluminium, silver, acrylic
38mm (h) x 15mm (w)
£14 (£35 rrp)



Footprint Studs (grass green, lavender)
KT-SS-FP-LG
Aluminium, silver, acrylic
23mm (h) x 15mm (w)
£14 (£35 rrp)



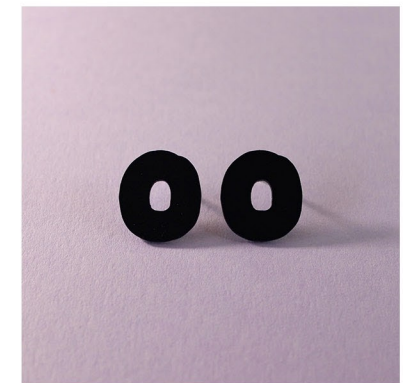
Footprint Studs (deep blue, turquoise)
KT-SS-FP-DT
Aluminium, silver, acrylic
23mm (h) x 15mm (w)
£14 (£35 rrp)



High Tide Earrings (lavender, foggy green)
KT-SS-HT-LF
Aluminium, silver, acrylic
68mm (h) x 45mm (w)
£20 (£50 rrp)



High Tide Earrings (sky blue, grass green)
KT-SS-HT-SG
Aluminium, silver, acrylic
68mm (h) x 45mm (w)
£20 (£50 rrp)



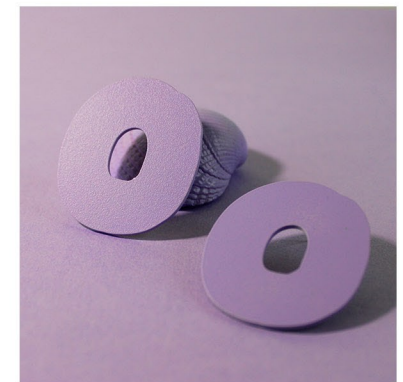
Small Island Studs (deep blue)
KT-SS-SI-DB
Aluminium, silver, acrylic
19mm (h) x 17mm (w)
£10 (£25 rrp)



Small Island Studs (grass green)
KT-SS-SI-GG
Aluminium, silver, acrylic
19mm (h) x 17mm (w)
£10 (£25 rrp)



Large Island Studs (sky blue)
KT-SS-LI-SB
Aluminium, silver, acrylic
36mm (h) x 31mm (w)
£16 (£40 rrp)



Large Island Studs (lavender)
KT-SS-LI-LL
Aluminium, silver, acrylic
36mm (h) x 31mm (w)
£16 (£40 rrp)

KATE TROUW

SEA FLOOR COLLECTION



Jellyfish Earrings (grass green, turquoise)
KT-SS-JF-GT
Aluminium, silver, acrylic
88mm (h) x 44mm (w)
£28 (£70 rrp)



Jellyfish Earrings (lavender, deep blue)
KT-SS-JF-LD
Aluminium, silver, acrylic
88mm (h) x 44mm (w)
£28 (£70 rrp)



Small Anemone Studs (lavender)
KT-SS-JF-LD
Aluminium, silver, acrylic
25mm (h) x 23mm (w)
£10 (£25 rrp)



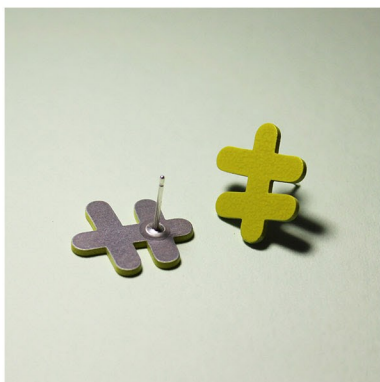
Small Anemone Studs (foggy green)
KT-SS-JF-FG
Aluminium, silver, acrylic
25mm (h) x 23mm (w)
£10 (£25 rrp)



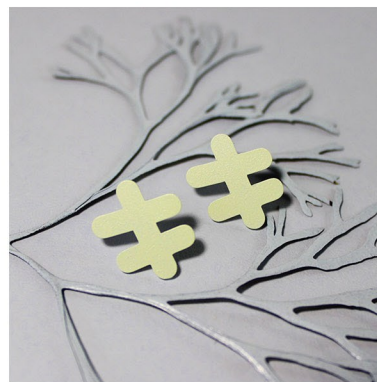
Large Anemone Studs (turquoise)
KT-SS-LA-TG
Aluminium, silver, acrylic
47mm (h) x 40mm (w)
£18 (£45 rrp)



Large Anemone Studs (foggy green)
KT-SS-LA-FG
Aluminium, silver, acrylic
47mm (h) x 40mm (w)
£18 (£45 rrp)



Reef Studs (grass green)
KT-SS-RS-GG
Aluminium, silver, acrylic
18mm (h) x 15mm (w)
£10 (£25 rrp)



Reef Studs (foggy green)
KT-SS-RS-FG
Aluminium, silver, acrylic
18mm (h) x 15mm (w)
£10 (£25 rrp)



Reflection Earrings (deep blue, turquoise)
KT-SS-RF-DT
Aluminium, silver, acrylic
80mm (h) x 44mm (w)
£28 (£70 rrp)

KATE TROUW

SEA FLOOR COLLECTION



Reflection Earrings
(lavender, grass green)
KT-SS-RF-LG
Aluminium, silver, acrylic
80mm (h) x 44mm (w)
£28 (£70 rrp)



Ripple Earrings
(sky blue, lavender)
KT-SS-RP-SL
Aluminium, silver, acrylic
80mm (h) x 9mm (w)
£18 (£45 rrp)



Ripple Earrings
(grass green, turquoise)
KT-SS-RP-GT
Aluminium, silver, acrylic
80mm (h) x 9mm (w)
£18 (£45 rrp)



Rockpool Earrings
(deep blue, turquoise)
KT-SS-RO-DB
Aluminium, silver, acrylic
80mm (h) x 9mm (w)
£26 (£65 rrp)



Rockpool Earrings (grass green, foggy green, lavender)
KT-SS-RO-ST
Aluminium, silver, acrylic
80mm (h) x 9mm (w)
£26 (£65 rrp)



Sea Floor Earrings (sky blue, foggy green, turquoise)
KT-SS-SF-FG
Aluminium, silver, acrylic
78mm (h) x 28mm (w)
£20 (£50 rrp)



Sea Floor Earrings (grass green, deep blue, lavender)
KT-SS-SF-DB
Aluminium, silver, acrylic
78mm (h) x 28mm (w)
£20 (£50 rrp)

KATE TROUW

TINY TREASURES COLLECTION

Tiny, shiny compositions of treasures from the sea and land.

Sea glass, citrine, quartz, tourmaline and other gems are bound together with shiny resin for simple stacking studs, drops and hoops.

Please note that the prices shown are **PER STUD**, as we find that customers enjoy curating their own selections from what we have available. These earrings can, however, also be provided as non-matching pairs.



Tiny Treasures

KT-TT-TT-TT

Sea glass, citrine, quartz, tourmaline, resin,
Sterling silver posts

Size varies; 3-6mm wide

£4 (£10 rrp) PER STUD



Treasure Drops

KT-TD-TD-TD

Sea glass, citrine, quartz,
tourmaline, resin, gold filled chain,
Sterling silver posts

Size varies; 3-6mm wide

£8 (£20 rrp) PER STUD

KATE TROUW

FOUND COLLECTION

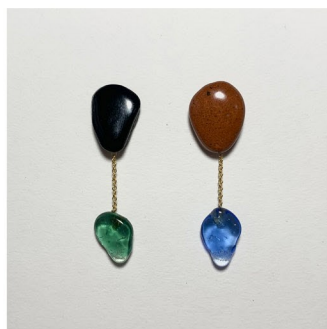
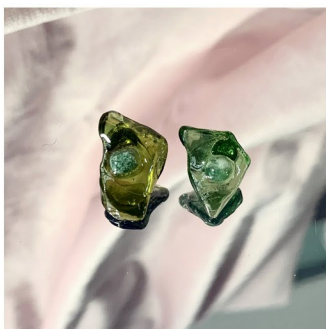
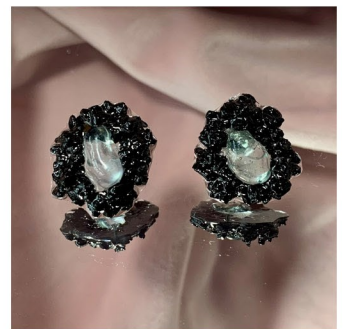
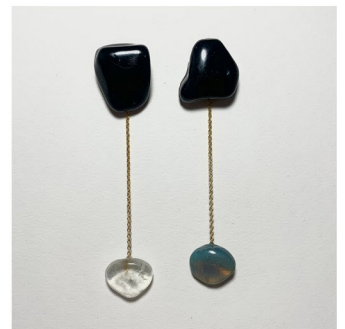
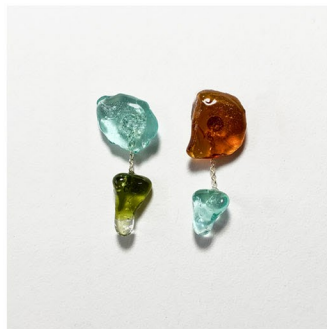
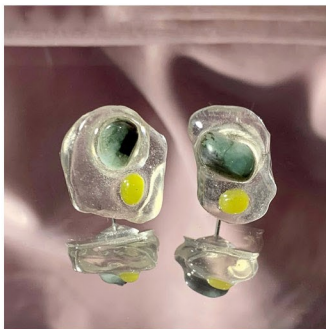
Constrained by Lockdown in 2020 I developed this collection at home with minimal tools and a lot of time at the beach with my son.

Fragments of sea worn glass, shell, and the odd bit of quartz we picked up are arranged into compositions with the occasional gem stone. These are then bound with resin to create one off earrings and necklaces. The glossy resin brings out the depth of colour in the glass and makes everything shine!

Since lockdown the material palette has expanded to include gem stones, coal and gold/silver chain.

Each pair is unique, you can view the current selection online at www.katetrouw.com/wholesale using the code KTWS for access.

Prices range from £8 - £32 (wholesale) with the majority of pairs around £16.



Dangly flower earrings made from gem stones bound together with shiny resin.

Each pair is unique, you can view the current selection online at www.katetrouw.com/wholesale using the code KTWS for access.

£20 Wholesale.

