

A man with a light beard is shown from the chest up, wearing a dark navy blue coat over a patterned vest and a blue shirt with a dark tie. The background is a rough, textured wall. The brand name 'LAMBTON' is overlaid in large white letters at the bottom.

LAMBTON

Passion · Personalisation · Product

WHO WE ARE

For over 40 years Lambton has been passionate about quality customised clothing. Being the first manufacturer to harness technology in harmony with artisanal 'craft' tailoring, we have built and maintain our position as a leading supplier to the UK and international tailoring and retail trade.

WHAT WE DO

We have witnessed how custom clothing is fast becoming the strongest trend in retail and we are here to help you achieve your goal... as ever: a partner on the journey not merely a supplier



PRODUCT

Unmatched variety, simplified online platforms, and one-stop shop for tailoring and casual wear needs.

PASSIONATE

Dedicated team with expertise in tailoring, retail, and fashion, committed to satisfying customer vision and building brand success.

PERSONALISATION

Tailor-made solutions that reflect individual style .



OUR USP's

SERVICE

UK based, Leeds finishing, Sales/Customer Service/Training/Garment Technicians

QUALITY

Supply mid to high end retailers and brands

BREADTH OF OFFER

Extensive product offer

FLEXIBILITY

MOQ's & speed of production

TECHNOLOGY

TOPS order platform and pattern generation



CHOICE BLOCKS, CONSTRUCTION AND STYLES

Adapt and innovate is our mantra in a market that changes and races ahead one minute and develops in a more subtle and iterative way the next.

We offer classic English formal, structured custom clothing alongside Euro-inspired relaxed, casual and laid-back menswear. If no shoulder pad, no lining and a specific 'handle' are needed for your 'look' to match soft, light and fluid cloths; we have the solution. Match this with ½ or full canvas in a machine and/or hand-made constructions across all blocks and styles and we can find your winning combination.





THE BALMACAAN

The name is derived from the Scottish estate near Inverness where it was first seen in the 19th century. It was made for comfort and warmth in the damp of a Scottish winter. Basically, it's an unstructured overcoat with a reversible collar that can be turned up against the elements, a fly or open button front, and a typical split raglan two-piece shoulder for ease of movement. A very practical coat for town and country.



LAMBTON

TOPS Looks A/W 2023

Ulster and Balmacaan



THE ULSTER

Historically worn in Victorian times and usually made from tweed, The Ulster has since become synonymous with high-end fashion, and made from tweed but also from luxury cashmere or wool fabrics.



READY TO WEAR

Lambton offers a specialist, short run (25's) & medium run (50 – 100+) manufacturing service for speciality and niche high end brands.

We manufacture formal suits, jackets & trousers alongside outer and semi casual wear for some of London's most exclusive retail brands.

This flexible service can dovetail with our custom blocks & styles or mirror the brand's own house nuances.

Pattern development, sampling and garment specification services are all available in the UK ahead of the 8 week production cycle in our main facility in Bangalore, India

In order to meet the needs of our smaller customers and retailers, we provide a seasonal capsule collection of pre-order styles. These collections have a minimum order quantity of 6 pieces per colour/12 pieces per style.

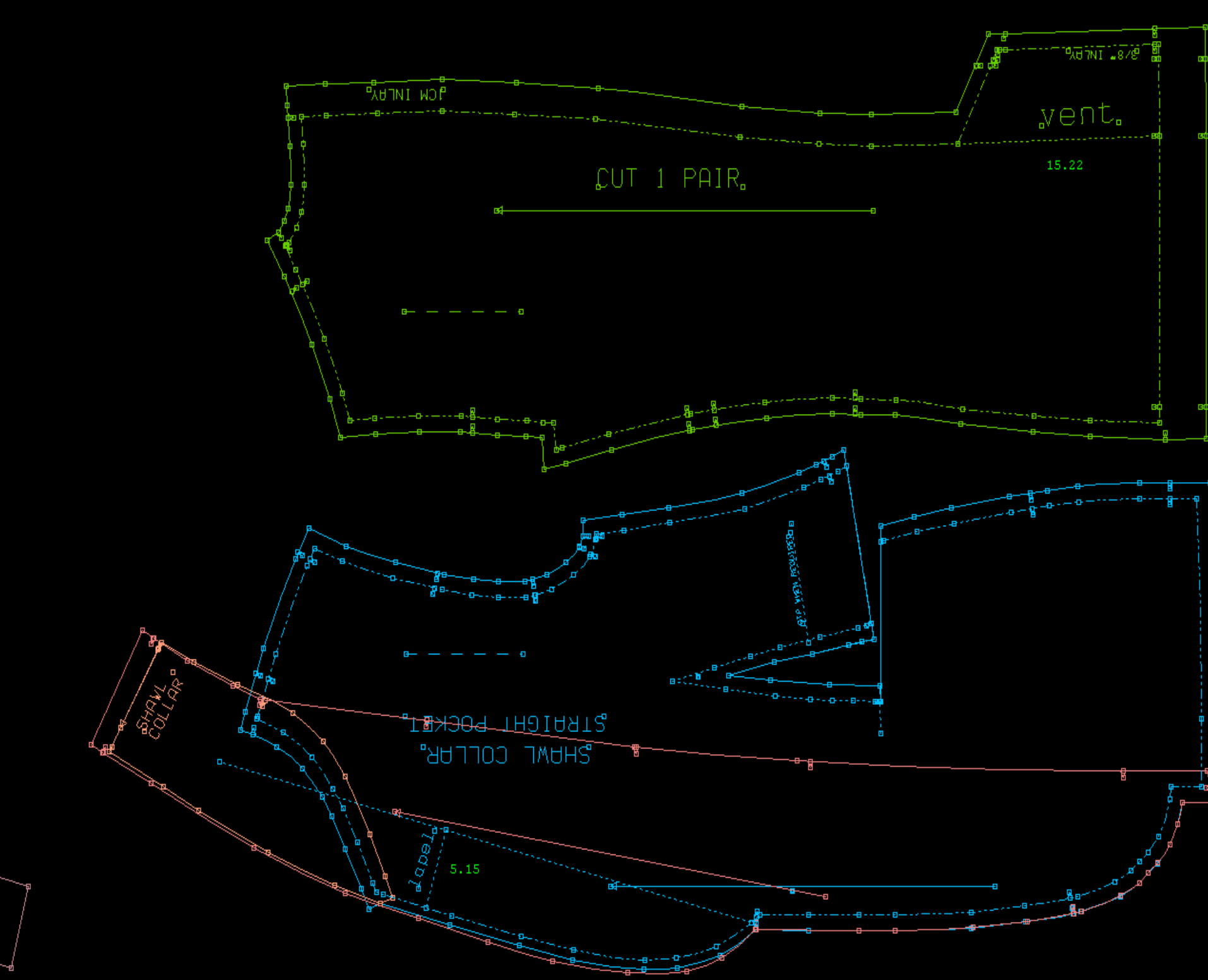
FABRIC OFFER

Lambton house/factory stocked cloths generally work out within a 23 working day cycle from order upload and back to you. Add a week for 3rd party/merchant cloths.

Our current bunches are made with leading cloth mills such as Vitale Barberis Canonico, Loro Piana, Reda, Dugdales, John Foster & Abraham Moon.

[Click here](#) to view our full fabric offering





TECHNOLOGY

Every garment is cut from a unique pattern/marker generated in the UK. An established order platform integrates daily with production data on all garments giving up to date progress by retail manager, by store, by employee...daily or weekly as required. To achieve this service Lambton have 45 UK based staff and a team of over 200 in our offshore facility in India.

A Lambton team member is managing and monitoring your simple or complex orders from 04:00 to 18:30 six days a week so you can focus on your priorities.



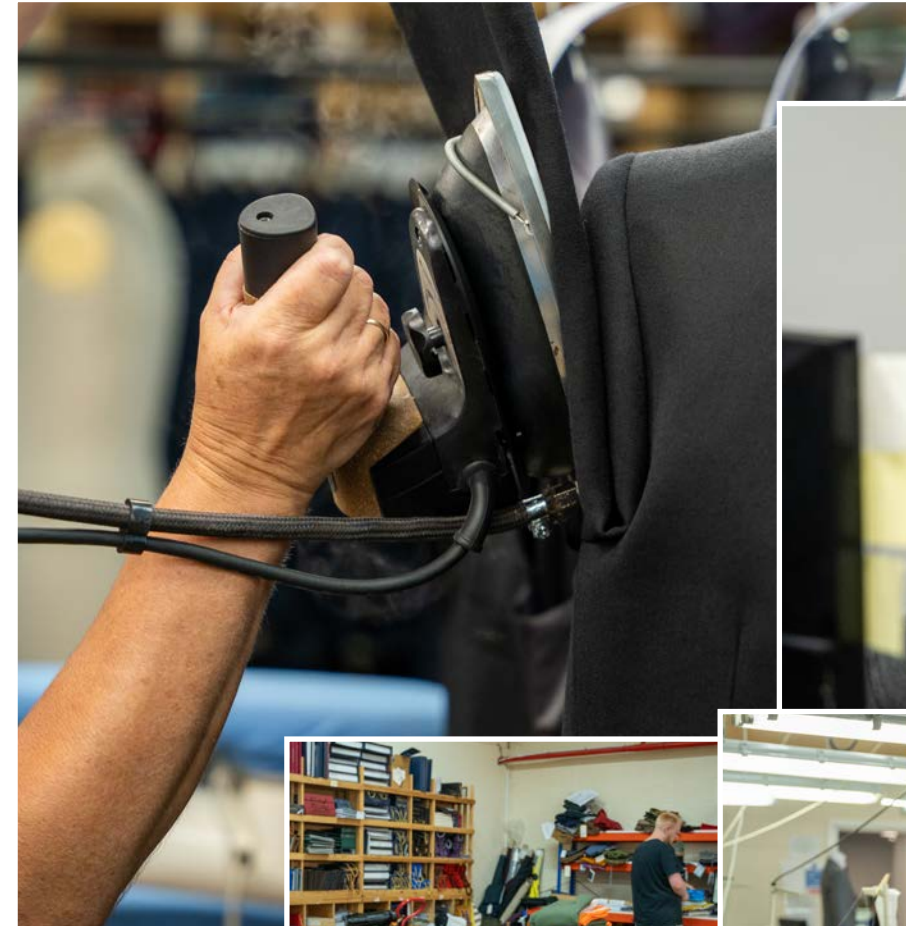
FROM THE GET GO

- ✓ A team of Customer Service Managers is on hand in Leeds, with a Team Member dedicated to your account
 - ✓ Automated order status updates & reporting
 - ✓ Online Style Portfolios
- ✓ Online and printed Technical Manuals (to complement the training)
- ✓ House cloths and trims (linings & button/melton card)
 - ✓ Sector leading order platform
 - ✓ Measurement charts
- ✓ Fully factored cloth/trim ordering with one invoice in association with the world's leading merchants & mills.
- ✓ Labels are woven to your brand rules & guidelines

TECHNICAL SUPPORT & TRAINING

Lambton has a depth of experienced garment technologists and years of experience based in both the UK and our offshore facilities. They are on hand to solve the challenges that such complex garments require from time to time.

We also offer retailers several levels of training in groups and one-to-one either in person or via zoom/teams as required. Upskilling your team's technical know-how impacts hugely on the profitability of your business and the outcomes for the customer.





QUALITY CONTROL

In India, our technologically advanced production unit supplies top-notch ready-made garments to leading upmarket retail brands worldwide. With strict quality control measures and a dedicated team of five QC professionals, we ensure consistent and reliable garments on our MTM line. In Leeds, our re-processing facilities monitor orders pre-dispatch, while weekly three-way quality reporting guarantees maintained quality for shipments globally.

SUSTAINABILITY

We believe in sustainable custom clothing with minimal waste. Our factory is LEED-certified as a Green Building with a Gold rating. Through optimised design and practices in site planning, water and energy management, material use, and indoor environment quality, we reduce our environmental impact.

The features of the unit include;

- ✓ On site renewable energy system (solar PV) with generation capacity of about 32,529 kWh per annum
- ✓ Energy efficient building with high performance glass.
 - ✓ Use of eco-friendly building materials.
- ✓ High efficiency, low noise , eco - friendly HVAC systems.
 - ✓ Use of ultra-low flow water fixtures.
- ✓ Eco friendly roof finishes to reduce heat ingress
- ✓ Landscaping with native and adaptive species
 - ✓ Rainwater harvesting system

On top of which, we are looking at including the DHL carbon offset fee and we are working towards moving towards cycled packaging wherever possible across the business.



A man with a beard is shown from the chest up, wearing a dark blue turtleneck sweater under a green and blue plaid jacket. He is sitting and looking down. The background is a textured, light-colored wall.

For more information contact: Mark Khan, Business Development
Manager at mark@lambtontailoring.co.uk

+44 (0)7894 239128
Unit 9, Hill Top Commercial Centre
Houghley Lane
Bramley, Leeds
LS13 2DN
United Kingdom