



**Berber
Leather
Trade
Catalogue
AW24**

About Berber Leather

Berber Leather specialises in handmade affordable leather goods from Morocco. Our products are classic designs that stand the test of time – no fast fashion here!

Berber Leather works with specialist craftsmen and women in Morocco to create our products. We have personally sourced each of our manufacturers and done our due diligence to ensure we are bringing an ethically sourced product to the UK. Each of our products has gone through numerous designs, improvements and testing to ensure that both you and your customers get a product that will last.

Our leather bags are made using techniques that have been used for hundreds of years by master artisans from both Fes and Marrakech. More details about the techniques used to produce our bags can be found on our website.

All Berber Leather products are made using Full Grain Leather. Full Grain Leather showcases all the natural markings from the hide, which can include nicks and marks from the animals' life and is part of what we love, and consider this characteristic a unique factor in every Berber Leather product. Full Grain Leather is also a lot more durable than any other leather on the market and as it ages, it will create a beautiful patina, meaning that in years time your customer's bags will look even better than the day they were purchased.

Berber Leather is run by father-daughter team Paul and Beki. We want to make your experience of working with us a personal one so if you have any questions or queries don't hesitate to contact us at sales@berberleather.com or give us a call on 01748 517007.



Ordering

Orders can be placed via email to sales@berberleather.com or over the phone on 01748 517007.

There is no minimum order on any of our products, and we can advise on the best ranges for your customers if you are unsure. We love working with retailers to create an ideal order, and can also provide point of sale and lifestyle images if required.

We are usually able to fulfil orders from our existing UK stock, however, as all of our items are handmade it can take around 28 working days if products are on back order. Large quantities may take longer to be made, if you wish to place a large order please contact us in advance.

We offer all shops postcode exclusivity for 6 months from their last order.

For current credit account holders, payment must be made within 30 days of invoice. All other invoices are made on a Pro-Forma basis. Please note we are currently not accepting new credit account applications at this time.

Payment may be made via BACS Transfer, debit/credit card via the link on our invoices, or over the phone by calling 01748 517007 Please note we do not accept cheques. You will find the price list at the back of this brochure, with wholesale prices and recommended retail prices. All prices in this brochure are correct until 01/01/2025. All wholesale prices in this catalogue exclude VAT.

Late payments will be subject to additional fees and the revocation of your credit account with us. Further failure to pay late invoices could result in us taking legal action to recover the debt, and the additional costs that occur.

Carriage is free on all orders over £350 (excluding VAT), otherwise there is a £10 P&P charge. If for any reason we have to split your order into multiple boxes or deliveries there is no extra charge. For orders outside the UK please contact us regarding delivery and customs charges.

For any further information or queries about our products, please email sales@berberleather.com or give us a call on 01748 517007.

Small Saddle Bags

Our saddle bags are perfect every day bags – big enough for the essentials, small and light enough to not be cumbersome.

Square Saddle Bag Details

- Adjustable Shoulder Strap
- 2 Pockets, One Zipped
- Buckle Fastener
- Measures 17 x 15 cm



Square Saddle Bag in Tan
Product Code 2001 £12.00

Half Moon Saddle Bag Details

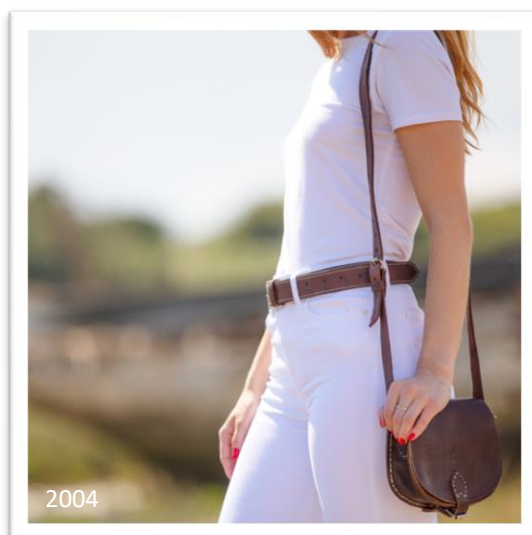
- Adjustable Shoulder Strap
- 2 Pockets, One Zipped
- Buckle Fastener
- Measures 18 x 16 cm



Square Saddle Bag in Dark Brown
Product Code 2002 £12.00



Half Moon Saddle Bag in Tan
Product Code 2003 £12.00



Half Moon Saddle Bag in Dark Brown
Product Code 2004 £12.00

The Temara Embossed Saddle Bag

Our embossed saddle bag collection has had an upgrade! A plain style isn't for everyone, so why not add an eye-catching accessory to your wardrobe with our beautifully embossed saddle bags? With adjustable shoulder strap and two inside compartments this small bag still has space for everything your customers need.

Please note embossed design varies between bags and is random on ordering.

- 26 x 20 cm
- 2 zipped pockets
- Adjustable shoulder strap
- Turn clasp fastening



| | | |
|------------------------------------|-------------------|--------|
| Embossed Saddle Bag in Light Brown | Product Code 2011 | £18.00 |
| Embossed Saddle Bag in Dark Brown | Product Code 2012 | £18.00 |
| Embossed Saddle Bag in Red | Product Code 2013 | £18.00 |
| Embossed Saddle Bag in Navy | Product Code 2014 | £18.00 |
| Embossed Saddle Bag in Teal | Product Code 2015 | £18.00 |
| Embossed Saddle Bag in Blue | Product Code 2016 | £18.00 |

Large Saddle Bags

- Adjustable Shoulder Strap
- 2 Pockets, One Zipped
- Buckle Fastener
- Measures 26 x 23cm



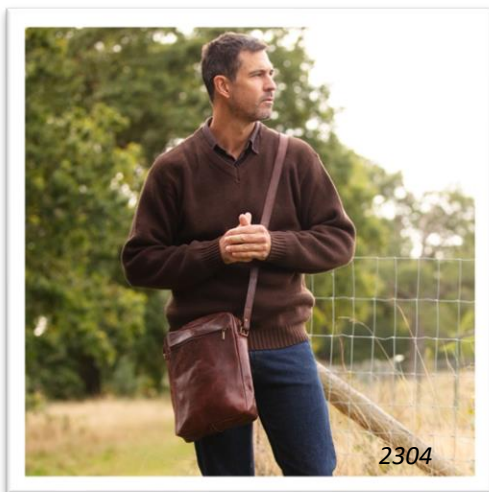
Large Saddle Bag in Tan
Product Code 2005 £22.00



Large Saddle Bag in Dark Brown
Product Code 2006 £22.00

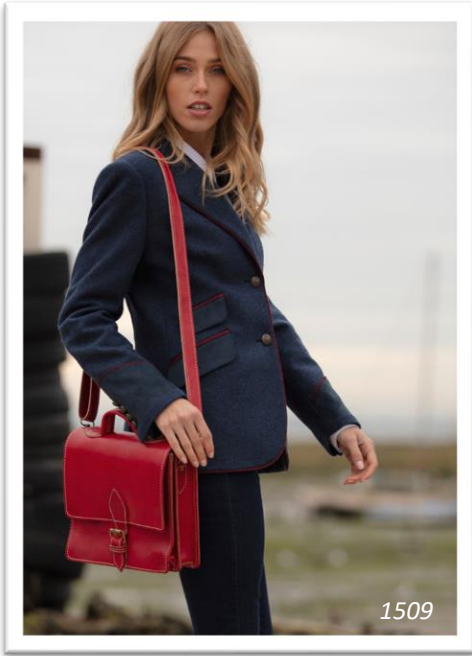
The Martil Messenger Bag

- Small: 18 x 20cm
- Large: 24 x 32cm
- Soft Moroccan Leather
- Adjustable Shoulder Strap
- 3 Zipped Pockets



| | | |
|--------------------------------|-------------------|--------|
| The Martil Small in Tan | Product Code 2301 | £16.00 |
| The Martil Small in Dark Brown | Product Code 2302 | £16.00 |
| The Martil Large in Tan | Product Code 2303 | £22.00 |
| The Martil Large in Dark Brown | Product Code 2304 | £22.00 |

Mini Satchels



Our Mini Satchels have all the style, and all the features of our larger sizes. Just more compact. These are the perfect statement accessory that will be a wardrobe staple for years to come.

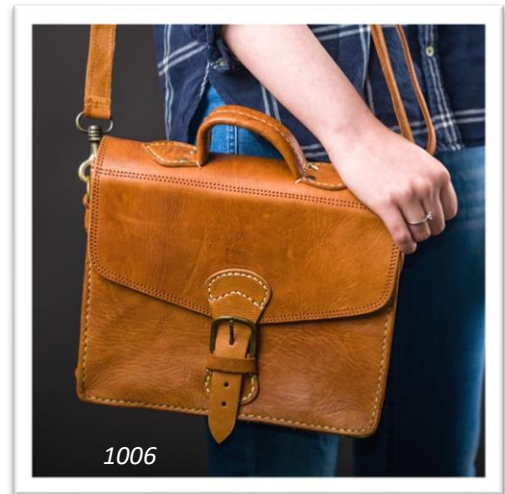
- 4 Interior Pockets, 2 Zipped
- One Exterior Rear Pocket
- Detachable, Adjustable Shoulder Strap
- Soft Lining to Protect Electronics
- Perfect for Tablets!

The Marrakech Mini

- Measures 28 x 22cm

| | |
|------------------------------|--------|
| Marrakech Mini in Dark Brown | |
| Product Code 1005 | £36.00 |

| | |
|-----------------------|--------|
| Marrakech Mini in Tan | |
| Product Code 1006 | £36.00 |



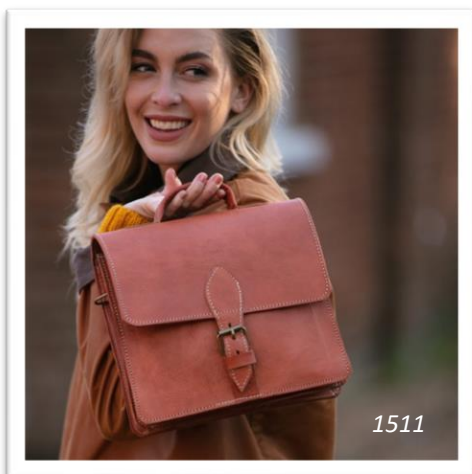
The Casablanca Mini

- Measures 24 x 26.5 cm

| | |
|------------------------|--------|
| Casablanca Mini in Red | |
| Product Code 1509 | £36.00 |

| | |
|-------------------------------|--------|
| Casablanca Mini in Dark Brown | |
| Product Code 1510 | £36.00 |

| | |
|--------------------------------|--------|
| Casablanca Mini in Light Brown | |
| Product Code 1511 | £36.00 |



The Casablanca Satchel

The Casablanca Large Satchel, the perfect work bag for fitting everything your customers need for a busy day in and out of the office.

- 4 Interior Pockets, 2 Zipped
- One Exterior Rear Pocket
- Detachable and Adjustable Shoulder Strap
- Soft Lining to Protect Electronics
- Measures 39 x 29 cm
- Will Fit a 15" Wide Laptop



| | | |
|---------------------------------|-------------------|--------|
| Casablanca Large in Dark Brown | Product Code 1501 | £58.00 |
| Casablanca Large in Red | Product Code 1502 | £58.00 |
| Casablanca Large in Light Brown | Product Code 1503 | £58.00 |

The Nador Tote Bag

Our spacious soft leather tote bag is the perfect everyday go-to bag. This lightweight bag is a true eco-friendly shopping bag alternative.



- Soft Moroccan Leather
- Suedette Lining
- Drop Down Top Handles
- Interior Zipped Pocket
- Zipped Closure

Height: 31cm
 Width: 37cm
 Depth: 11.5cm
 Strap Drop: 22cm

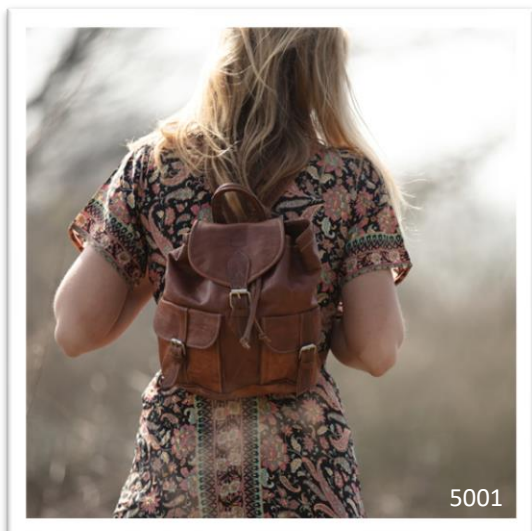
| | | |
|------------------------------|-------------------|--------|
| Nador Tote Bag in Tan | Product Code 4401 | £26.00 |
| Nador Tote Bag in Dark Brown | Product Code 4402 | £26.00 |

The Larache Rucksack

One of our bestsellers since its launch, this soft leather rucksack is a classic style designed to last. Available in two sizes and colours.

Small Rucksack

- Adjustable Shoulder Straps
- 2 Buckled Front Pockets
- 1 Zipped Inside Pocket
- Buckle Fasteners
- 30.5 x 23 cm



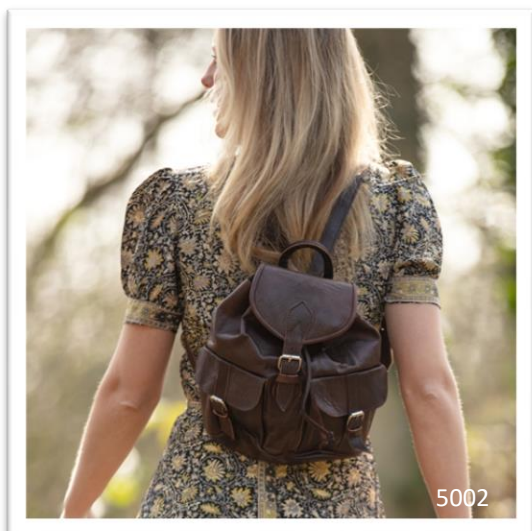
Small Rucksack in Tan
Product Code 5001 £23.00

Large Rucksack

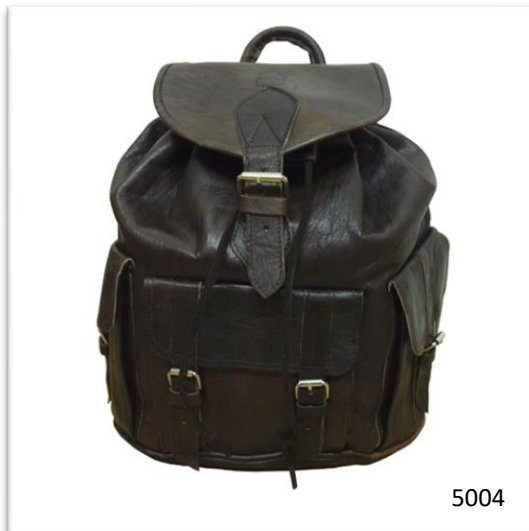
- Adjustable Shoulder Straps
- 3 Buckled Front Pockets
- 1 Zipped Inside Pocket
- Buckle Fasteners
- 38 x 35.5 cm



Large Rucksack in Tan
Product Code 5003 £32.00

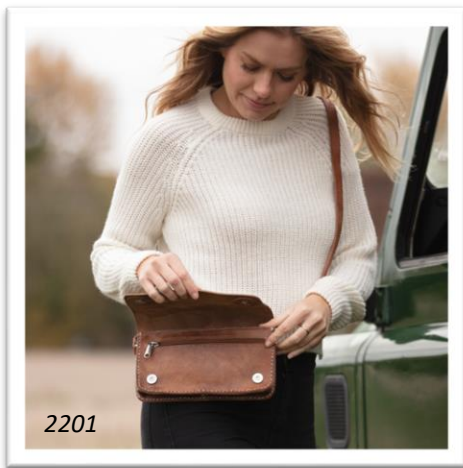


Small Rucksack in Dark Brown
Product Code 5002 £23.00

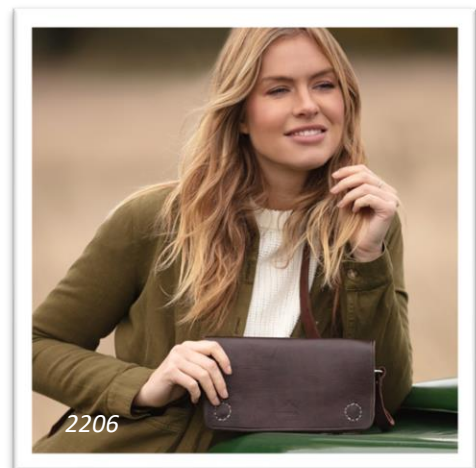


Large Rucksack in Dark Brown
Product Code 5004 £32.00

The Kenitra Shoulder Bag



- Adjustable Shoulder Strap
- Measures 25 x 14 cm



- Strong Magnetic Clasps
- 2 Pockets, One Zipped

Shoulder Bag in Tan

Product Code 2201

£15.00

Shoulder Bag in Dark Brown

Product Code 2206

£15.00

The Kenitra Cross-Body Bag



- Measures 25 x 17 cm
- Adjustable Shoulder Strap



- 3 Inner Pockets, 1 Zipped
- Strong Metal Twist Clasp

The Kenitra Cross-Body Bag in Tan

Product Code 2207

£24.00

The Kenitra Cross-Body Bag in Dark Brown

Product Code 2208

£24.00

The Kenitra Soft Shoulder Bag



- Adjustable, Removable Shoulder Strap
- Measures 20 x 13 cm
- Strong Metal Twist Clasp
- 3 Pockets, One Zipped Inside, One Zipped on Rear
- Lightweight Soft Leather

| | | |
|----------------------------|-------------------|--------|
| Soft Shoulder Bag in Tan | Product Code 2204 | £16.00 |
| Soft Shoulder Bag in Brown | Product Code 2205 | £16.00 |

The Kenitra Travel Pouch

- Measures 20 x 16 cm
- Adjustable Shoulder Strap
- 2 Zipped Pockets, One Inside, One on Back
- 2 Inner Pockets
- Lined to Protect Electronics
- Velcro Fastener

| | | |
|-----------------------------------|-------------------|--------|
| Berber Travel Pouch in Tan | Product Code 2101 | £16.00 |
| Berber Travel Pouch in Dark Brown | Product Code 2102 | £16.00 |



The Rabat Collection

The Rabat Weekend Bag is ideal for travellers. Big enough to fit all those essentials without being bulky. Ideal for weekends away and overnight stays, whether they are for work or pleasure.



4301

- Measures 52 x 25 x 26cm
- 3 Pockets, One Large Zipped, 2 Side Buckled.
- Adjustable, Removeable Shoulder Strap
- Strong Handles
- Lightweight Leather



4302

| | |
|--------------------|--------|
| Weekend Bag in Tan | |
| Product Code 4301 | £69.00 |

| | |
|---------------------------|--------|
| Weekend Bag in Dark Brown | |
| Product Code 4302 | £69.00 |

The latest addition to our Rabat range is our Rabat Mini Bowling Bag. Identical in design to our Rabat overnight bag but the perfect size for an everyday handbag.

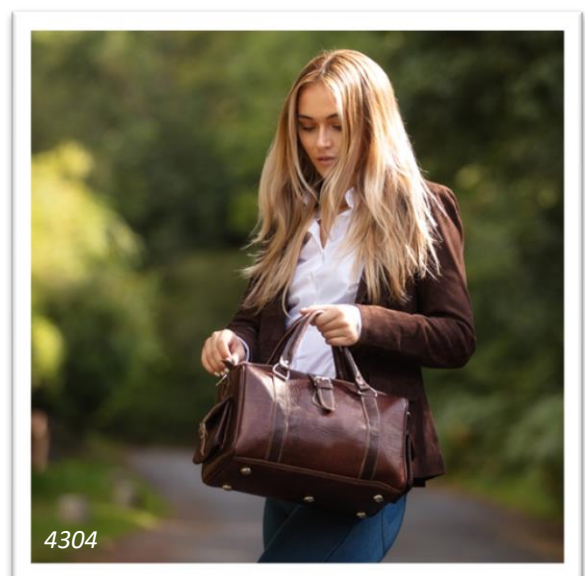


4303

- Measures 40 x 23 x 29cm

| | |
|--------------------|--------|
| Bowling Bag in Tan | |
| Product Code 4303 | £34.00 |

| | |
|---------------------------|--------|
| Bowling Bag in Dark Brown | |
| Product Code 4304 | £34.00 |



4304

NEW

The Safi Rattan Bags

Our latest collection launching in 2024! Made from natural sustainable resources of straw or raffia with leather detailing.



Beach Tote

- Small Tote – 23cm high x 45cm top x 23cm base
- Large Tote – 32 cm high x 56cm top x 32cm base
- Leather shoulder strap
- Plain leather flap



Cross-body Bags

- Straw bag – loose weave 22cm diameter
- Raffia bag – tight weave 20cm diameter
- Leather shoulder strap
- Embossed leather flap

Safi Round Cross-body bag in straw

Product Code 7001

£15.00

Safi small Beach Tote

Product Code 7002

£16.00

Safi large Beach Tote

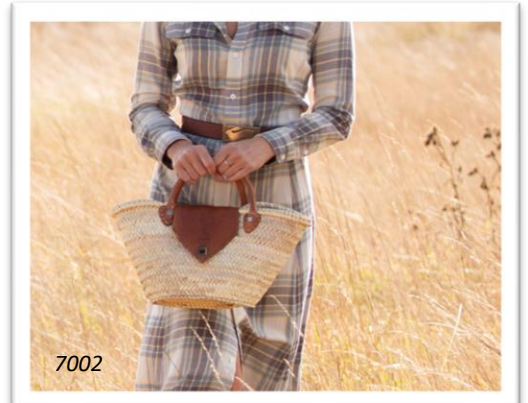
Product Code 7003

£24.00

Safi Round Cross-body bag in raffia

Product Code 7004

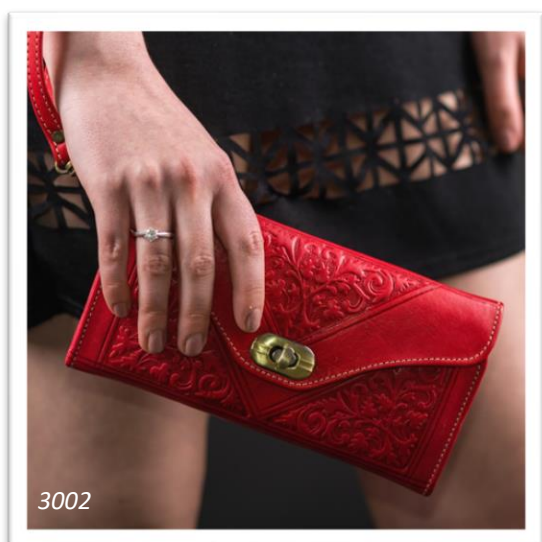
£15.00



Large Tri-fold Purses

Our Large Tri-Fold Purses are the perfect way to keep cards and cash organised. The vintage style soft leather and hand-stamped design are eye-catching without being garish. Available in 11 colours.

- 8 Card Slots, 2 Clear for Identity Cards
- 2 Zipped Pockets, One Inside, One on Back
- 20 x 11 cm When Closed
- 20 x 30 cm When Open
- Removable Wrist Strap
- Embossed Leather Design



| | | |
|----------------------------------|-------------------|--------|
| Large Tri-Fold Purse Orange | Product Code 3001 | £13.00 |
| Large Tri-Fold Purse Red | Product Code 3002 | £13.00 |
| Large Tri-Fold Purse Dark Brown | Product Code 3003 | £13.00 |
| Large Tri-Fold Purse Light Brown | Product Code 3004 | £13.00 |
| Large Tri-Fold Purse Black | Product Code 3005 | £13.00 |
| Large Tri-Fold Purse Dark Red | Product Code 3006 | £13.00 |
| Large Tri-Fold Purse Teal | Product Code 3007 | £13.00 |
| Large Tri-Fold Purse Green | Product Code 3008 | £13.00 |
| Large Tri-Fold Purse Pink | Product Code 3009 | £13.00 |
| Large Tri-Fold Purse Blue | Product Code 3010 | £13.00 |
| Large Tri-Fold Purse Yellow | Product Code 3011 | £13.00 |

Small Tri-fold Purses

A smaller version of our large purses, featuring card slots, 2 zipped pockets and space for notes/receipts. Developed after being requested by our customers, this range has 8 colours.



3503



3504

| | | |
|----------------------------------|-------------------|--------|
| Small Tri-Fold Purse Red | Product Code 3501 | £10.00 |
| Small Tri-Fold Purse Black | Product Code 3502 | £10.00 |
| Small Tri-Fold Purse Light Brown | Product Code 3503 | £10.00 |
| Small Tri-Fold Purse Dark Brown | Product Code 3504 | £10.00 |
| Small Tri-Fold Purse Blue | Product Code 3505 | £10.00 |
| Small Tri-Fold Purse Teal | Product Code 3506 | £10.00 |
| Small Tri-Fold Purse Pink | Product Code 3507 | £10.00 |
| Small Tri-Fold Purse Oxblood | Product Code 3508 | £10.00 |

Coin Purses

Leather doesn't have to break the bank. These coin purses come with 2 zipper pockets and can fit bank cards in them as well. Each pack contains 5 purses.



3201

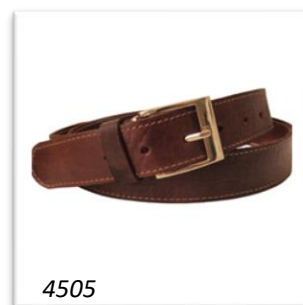


3202

| | | |
|---------------------------------|-------------------|--------|
| Coin Purse in Black (Pack of 5) | Product Code 3201 | £11.00 |
| Coin Purse in Brown (Pack of 5) | Product Code 3202 | £11.00 |
| Coin Purse in Tan (Pack of 5) | Product Code 3203 | £11.00 |

Belts

An essential to any outfit, and tough enough to withstand every day use for years. Our leather belts are sure to be a hit with your customers. Each colour is available in a narrow (3.5cm) and wide (4cm) width and comes in 3 different sizes.



| | | |
|-----------------------------------|---------------------|--------------------|
| Tan Narrow Width 30"-35" | Product Code 4501-S | £30.00 (pack of 3) |
| Tan Narrow Width 35"-40" | Product Code 4501-M | £30.00 (pack of 3) |
| Tan Narrow Width 40"-45" | Product Code 4501-L | £30.00 (pack of 3) |
| Brown Narrow Width 30"-35" | Product Code 4505-S | £30.00 (pack of 3) |
| Brown Narrow Width 35"-40" | Product Code 4505-M | £30.00 (pack of 3) |
| Brown Narrow Width 40"-45" | Product Code 4505-L | £30.00 (pack of 3) |
| Black Narrow Width 30"-35" | Product Code 4507-S | £30.00 (pack of 3) |
| Black Narrow Width 35"-40" | Product Code 4507-M | £30.00 (pack of 3) |
| Black Narrow Width 40"-45" | Product Code 4507-L | £30.00 (pack of 3) |
| Black/White stitch Narrow 30"-35" | Product Code 4503-S | £30.00 (pack of 3) |
| Black/White stitch Narrow 35"-40" | Product Code 4503-M | £30.00 (pack of 3) |
| Black/White stitch Narrow 40"-45" | Product Code 4503-L | £30.00 (pack of 3) |
| Tan Wide Width 30"-35" | Product Code 4502-S | £36.00 (pack of 3) |
| Tan Wide Width 35"-40" | Product Code 4502-M | £36.00 (pack of 3) |
| Tan Wide Width 40"-45" | Product Code 4502-L | £36.00 (pack of 3) |
| Brown Wide Width 30"-35" | Product Code 4506-S | £36.00 (pack of 3) |
| Brown Wide Width 35"-40" | Product Code 4506-M | £36.00 (pack of 3) |
| Brown Wide Width 40"-45" | Product Code 4506-L | £36.00 (pack of 3) |
| Black Wide Width 30"-35" | Product Code 4508-S | £36.00 (pack of 3) |
| Black Wide Width 35"-40" | Product Code 4508-M | £36.00 (pack of 3) |
| Black Wide Width 40"-45" | Product Code 4508-L | £36.00 (pack of 3) |
| Black/White stitch Wide 30"-35" | Product Code 4504-S | £36.00 (pack of 3) |
| Black/White stitch Wide 35"-40" | Product Code 4504-M | £36.00 (pack of 3) |
| Black/White stitch Wide 40"-45" | Product Code 4504-L | £36.00 (pack of 3) |

Braided Belts

| | | |
|-------------|---------------------|--------------------|
| Tan 30"-35" | Product Code 4509-S | £33.00 (pack of 3) |
| Tan 35"-40" | Product Code 4509-M | £33.00 (pack of 3) |
| Tan 40"-45" | Product Code 4509-L | £33.00 (pack of 3) |



4509



4510

| | | |
|---------------|---------------------|--------------------|
| Brown 30"-35" | Product Code 4510-S | £33.00 (pack of 3) |
| Brown 35"-40" | Product Code 4510-M | £33.00 (pack of 3) |
| Brown 40"-45" | Product Code 4510-L | £33.00 (pack of 3) |

| | | |
|---------------|---------------------|--------------------|
| Black 30"-35" | Product Code 4511-S | £33.00 (pack of 3) |
| Black 35"-40" | Product Code 4511-M | £33.00 (pack of 3) |
| Black 40"-45" | Product Code 4511-L | £33.00 (pack of 3) |



4511

NEW

Belt Multi-Colour Pack

New this autumn – multiple colours in one sized pack. Each Pack contains one tan, one brown and one black belt.

| | | |
|-----------------------------------|---------------------|--------------------|
| Multi Colour Narrow Width 30"-35" | Product Code 4512-S | £30.00 (pack of 3) |
| Multi Colour Narrow Width 35"-40" | Product Code 4512-M | £30.00 (pack of 3) |
| Multi Colour Narrow Width 40"-45" | Product Code 4512-L | £30.00 (pack of 3) |
| Multi Colour Wide Width 30"-35" | Product Code 4513-S | £36.00 (pack of 3) |
| Multi Colour Wide Width 35"-40" | Product Code 4513-M | £36.00 (pack of 3) |
| Multi Colour Wide Width 40"-45" | Product Code 4513-L | £36.00 (pack of 3) |
| Multi Colour Braided 30"-35" | Product Code 4514-S | £33.00 (pack of 3) |
| Multi Colour Braided 35"-40" | Product Code 4514-M | £33.00 (pack of 3) |
| Multi Colour Braided 40"-45" | Product Code 4514-L | £33.00 (pack of 3) |

Product Price List

| Item | Colour | SKU | Price Per Unit (ex. VAT) | RRP |
|-----------------------------------|-------------|------|-----------------------------|---------|
| Marrakech Satchel Mini | Dark Brown | 1005 | £36.00 | £90.00 |
| | Tan | 1006 | £36.00 | £90.00 |
| Casablanca Satchel Large | Dark Brown | 1501 | £58.00 | £145.00 |
| | Red | 1502 | £58.00 | £145.00 |
| | Light Brown | 1503 | £58.00 | £145.00 |
| Casablanca Satchel Mini | Red | 1509 | £36.00 | £90.00 |
| | Dark Brown | 1510 | £36.00 | £90.00 |
| | Light Brown | 1511 | £36.00 | £90.00 |
| Small Rucksack | Tan | 5001 | £23.00 | £57.50 |
| | Dark Brown | 5002 | £23.00 | £57.50 |
| Large Rucksack | Tan | 5003 | £32.00 | £80.00 |
| | Dark Brown | 5004 | £32.00 | £80.00 |
| Large Tri-fold Purse | Orange | 3001 | £13.00 | £32.50 |
| | Red | 3002 | £13.00 | £32.50 |
| | Dark Brown | 3003 | £13.00 | £32.50 |
| | Light Brown | 3004 | £13.00 | £32.50 |
| | Black | 3005 | £13.00 | £32.50 |
| | Dark Red | 3006 | £13.00 | £32.50 |
| | Teal | 3007 | £13.00 | £32.50 |
| | Green | 3008 | £13.00 | £32.50 |
| | Pink | 3009 | £13.00 | £32.50 |
| | Blue | 3010 | £13.00 | £32.50 |
| | Yellow | 3011 | £13.00 | £32.50 |
| Small Tri-Fold Purse | Red | 3501 | £10.00 | £25.00 |
| | Black | 3502 | £10.00 | £25.00 |
| | Light Brown | 3503 | £10.00 | £25.00 |
| | Dark Brown | 3504 | £10.00 | £25.00 |
| | Blue | 3505 | £10.00 | £25.00 |
| | Teal | 3506 | £10.00 | £25.00 |
| | Pink | 3507 | £10.00 | £25.00 |
| | Dark Red | 3508 | £10.00 | £25.00 |
| Small Square Saddle Bag | Tan | 2001 | £12.00 | £30.00 |
| | Dark Brown | 2002 | £12.00 | £30.00 |
| Small Half Moon Saddle Bag | Tan | 2003 | £12.00 | £30.00 |
| | Dark Brown | 2004 | £12.00 | £30.00 |
| Large Half Moon Saddle Bag | Tan | 2005 | £22.00 | £54.00 |
| | Dark Brown | 2006 | £22.00 | £54.00 |
| Embossed Saddle Bag | Light Brown | 2011 | £18.00 | £45.00 |
| | Dark Brown | 2012 | £18.00 | 45.00 |
| | Red | 2013 | £18.00 | 45.00 |
| | Navy | 2014 | £18.00 | 45.00 |
| | Teal | 2015 | £18.00 | 45.00 |
| | Blue | 2016 | £18.00 | 45.00 |
| The Kenitra Shoulder Bag | Tan | 2201 | £15.00 | £38.00 |
| | Dark Brown | 2206 | £15.00 | £38.00 |
| Soft Shoulder Bag | Tan | 2204 | £16.00 | £42.50 |
| | Dark Brown | 2205 | £16.00 | £42.50 |
| The Kenitra Cross-Body Bag | Tan | 2207 | £24.00 | £60.00 |
| | Dark Brown | 2208 | £24.00 | £60.00 |
| | | | | |

| | | | | |
|--|-------------|--------|--------|---------------|
| Travel Pouch | Tan | 2101 | £16.00 | £42.50 |
| | Dark Brown | 2102 | £16.00 | £42.50 |
| The Nador Tote Bag | Tan | 4401 | £26.00 | £65.00 |
| | Dark Brown | 4402 | £26.00 | £65.00 |
| The Martil Messenger Bag Small | Tan | 2301 | £16.00 | £40.00 |
| | Dark Brown | 2302 | £16.00 | £40.00 |
| The Martil Messenger Bag Large | Tan | 2303 | £22.00 | £55.00 |
| | Dark Brown | 2304 | £22.00 | £55.00 |
| The Rabat Weekend Bag | Tan | 4301 | £69.00 | £175.00 |
| | Dark Brown | 4302 | £69.00 | £175.00 |
| The Rabat Mini Bowling Bag | Tan | 4303 | £34.00 | £85.00 |
| | Dark Brown | 4304 | £34.00 | £85.00 |
| The Safi Cross-Body Bag Loose Weave | Straw | 7001 | £15.00 | £37.50 |
| The Safi Small Beach Tote | Straw | 7002 | £16.00 | £40.00 |
| The Safi Large Beach Tote | Straw | 7003 | £24.00 | £60.00 |
| The Safi Cross-Body Bag Tight Weave | Raffia | 7004 | £15.00 | £37.50 |
| Coin Purse (Pack of 5) | Black | 3201 | £11.00 | £5.50 (each) |
| | Brown | 3202 | £11.00 | £5.50 (each) |
| | Tan | 3203 | £11.00 | £5.50 (each) |
| Narrow Belt 30"-35" (Pack of 3) | Tan | 4501-S | £30.00 | £25.00 (each) |
| | Brown | 4505-S | £30.00 | £25.00 (each) |
| | Black | 4507-S | £30.00 | £25.00 (each) |
| | Multicolour | 4512-S | £30.00 | £25.00 (each) |
| Narrow Belt 35"-40" (Pack of 3) | Tan | 4501-M | £30.00 | £25.00 (each) |
| | Brown | 4505-M | £30.00 | £25.00 (each) |
| | Black | 4507-M | £30.00 | £25.00 (each) |
| | Multicolour | 4512-M | £30.00 | £25.00 (each) |
| Narrow Belt 40"-45" (Pack of 3) | Tan | 4501-L | £30.00 | £25.00 (each) |
| | Brown | 4505-L | £30.00 | £25.00 (each) |
| | Black | 4505-L | £30.00 | £25.00 (each) |
| | Multicolour | 4512-L | £30.00 | £25.00 (each) |
| Wide Belt 30"-35" (Pack of 3) | Tan | 4502-S | £36.00 | £30.00 (each) |
| | Brown | 4506-S | £36.00 | £30.00 (each) |
| | Black | 4508-S | £36.00 | £30.00 (each) |
| | Multicolour | 4513-S | £36.00 | £30.00 (each) |
| Wide Belt 35"-40" (Pack of 3) | Tan | 4502-M | £36.00 | £30.00 (each) |
| | Brown | 4506-M | £36.00 | £30.00 (each) |
| | Black | 4508-M | £36.00 | £30.00 (each) |
| | Multicolour | 4513-M | £36.00 | £30.00 (each) |
| Wide Belt 40"-45" (Pack of 3) | Tan | 4502-L | £36.00 | £30.00 (each) |
| | Brown | 4506-L | £36.00 | £30.00 (each) |
| | Black | 4508-L | £36.00 | £30.00 (each) |
| | Multicolour | 4513-L | £36.00 | £30.00 (each) |
| Braided Belt 30"-35" (Pack of 3) | Tan | 4509-S | £33.00 | £27.50 (each) |
| | Brown | 4510-S | £33.00 | £27.50 (each) |
| | Black | 4511-S | £33.00 | £27.50 (each) |
| | Multicolour | 4514-S | £33.00 | £27.50 (each) |
| Braided Belt 35"-40" (Pack of 3) | Tan | 4509-M | £33.00 | £27.50 (each) |
| | Brown | 4510-M | £33.00 | £27.50 (each) |
| | Black | 4511-M | £33.00 | £27.50 (each) |
| | Multicolour | 4514-M | £33.00 | £27.50 (each) |
| Braided Belt 40"-45" (Pack of 3) | Tan | 4509-L | £33.00 | £27.50 (each) |
| | Brown | 4510-L | £33.00 | £27.50 (each) |
| | Black | 4511-L | £33.00 | £27.50 (each) |
| | Multicolour | 4514-L | £33.00 | £27.50 (each) |



sales@berberleather.com

01748 517007