



BROOK TAVERNER



BROOK TAVERNER

Autumn / Winter 2024

BROOK TAVERNER

AUTUMN / WINTER 2024

NEW

**Regular Fit Dee Olive Herringbone
Wool Blend Jacket (5342A)**

80% polyester, 20% wool. 375g.

38" to 50" short, 38" to 54" regular, 40" to 50" long



THE AUTUMN WINTER 2024 COLLECTION

As we welcome Autumn 2024, we are thrilled to introduce our latest collection, combining new additions and timeless essentials. This brochure exemplifies our dedication to quality, emphasising the use of the finest fabrics and expert craftsmanship in top-tier factories, guaranteeing both style and quality in your wardrobe choices.

If you would like to view samples or to see specific swatches please contact our customer service team or your account manager who will be more than happy to help. Alternatively, you're welcome to view samples at our head office in Keighley, by prior appointment.

Thank you for your continued support.

Yours sincerely

Jason Scott
Owner

CONTACT DETAILS

Head Office

Brook Taverner Ltd
Haincliffe Road
Keighley
West Yorkshire
BD21 5BU

Customer Services

Telephone: +44 (0) 1535 251900 (option 2)
Email: orders@brooktaverner.com

Paul Graham - Account Manager North

Telephone: +44 (0)7718 603587
Email: p.graham@brooktaverner.com

Mat Brownlee - Account Manager South

Telephone: +44 (0)7764 242008
Email: m.brownlee@brooktaverner.com

Mervyn Boyd - Agent for Northern and Southern Ireland

Telephone: +44 (0)7768 671618
Email: mervynboyd@btinternet.com

WORN WITH

Oatmeal Norton Button Neck Lambswool Jumper (4519A)

Navy Knitted Cotton Shirt (4404AT)

Navy Knitted Tie (1757A)

Yeo Navy Winter Weight THERMOLITE® Trousers (8996AT)

WORN WITH
Cornwall Stone Roll Neck Cotton Merino Jumper (4199B)
Navy Cotton Moleskin Shirt (4534B)
Boulder Vintage Blue Denim Jeans (8958C)



WORN WITH
Lune Winter White Lattice Stitch Jumper (4391B)
Boulder Indigo Denim Jeans (8958A)
Sand Check Lambswool Scarf (1919A)

WORN WITH
Cornwall Stone Roll Neck Cotton Merino Jumper (4199B)
Navy Cotton Moleskin Shirt (4534B)
Boulder Vintage Blue Denim Jeans (8958C)

ABOVE LEFT - JOSS WEARS

NEW

Tailored Fit Carberry Navy Puppytooth Wool Blend Jacket (5394A)

70% polyester, 20% wool, 10% other fibres. 335g.
38" to 50" short, 38" to 54" regular, 40" to 50" long

ABOVE RIGHT - SIMON WEARS

NEW

Fitzgerald Chocolate Check Overshirt (9131A)

95% polyester, 5% wool. 650g. Dry clean only.
S, M, L, XL, XXL, XXXL



NEW

Roger Copper Puppytooth Wool Blend Jacket (9134A)

60% polyester, 30% wool, 10% other fibres.
720g. Dry clean only.

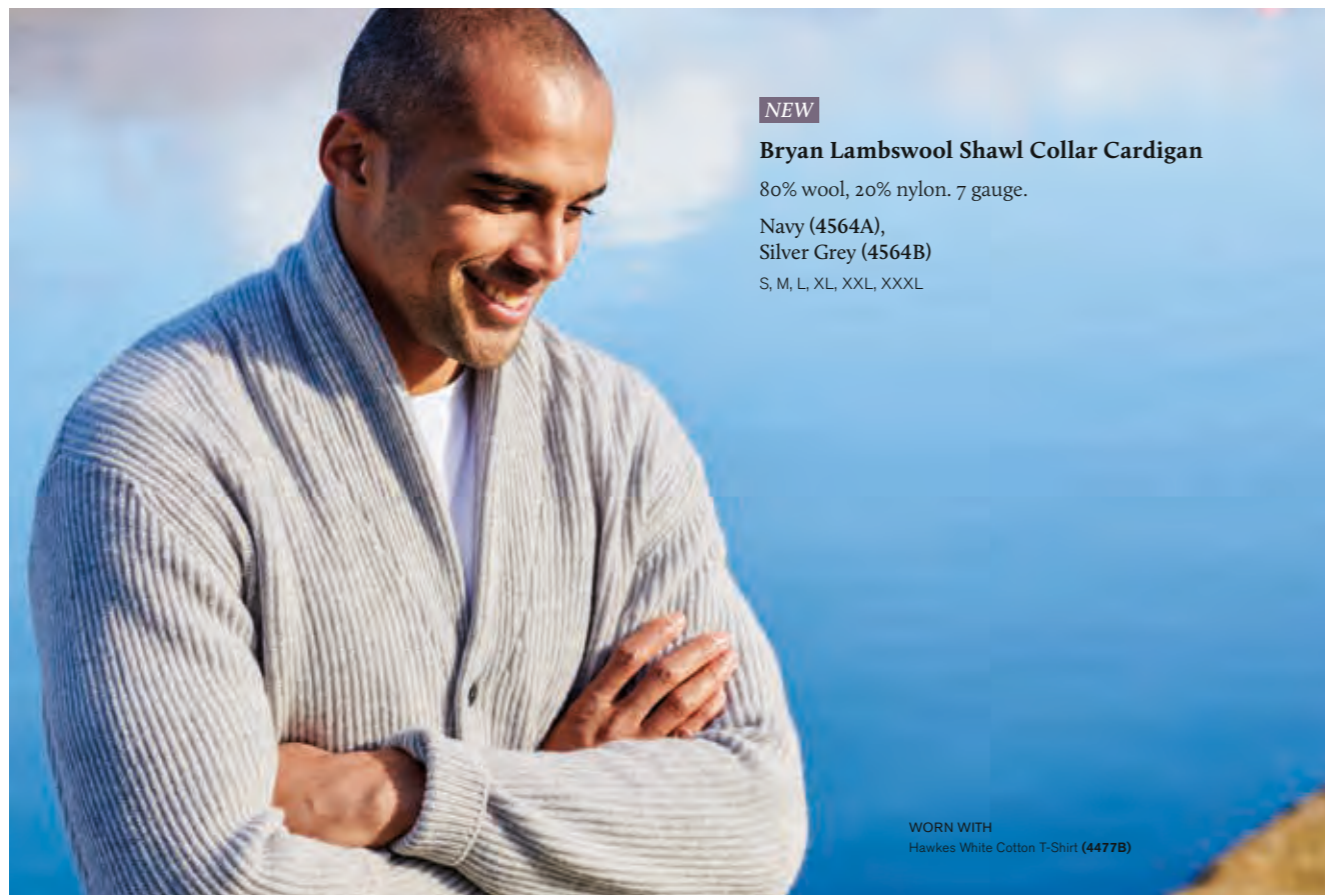
S, M, L, XL, XXL, XXXL

WORN WITH

Waver Winter White Turtle Neck Jumper (**4382B**)
Boulder Vintage Blue Denim Jeans (**8958C**)



WORN WITH
 Airforce Blue Melange Check Cotton Shirt (4539B)
 Hawkes White Cotton T-Shirt (4477B)
 Boulder Vintage Blue Denim Jeans (8958C)



NEW
Bryan Lambswool Shawl Collar Cardigan
 80% wool, 20% nylon. 7 gauge.
 Navy (4564A),
 Silver Grey (4564B)
 S, M, L, XL, XXL, XXXL

WORN WITH
 Hawkes White Cotton T-Shirt (4477B)



WORN WITH
 Hawkes White Cotton T-Shirt (4477B)
 Boulder Indigo Denim Jeans (8958A)

NEW
Tailored Fit Moore Corduroy Jacket

98% cotton, 2% elastane. 341g. Machine washable.

Navy (5399A) as worn,
 Mocha (5399B) see page 9,
 Forest Green (5399C) see page 63

38" to 50" short, 38" to 54" regular, 40" to 50" long



Long Sleeve 'Super Soft' Chambray Shirts

Available in Regular and Tailored Fit with Chest Pocket

100% cotton.

Regular fit - with button down collar

Navy Chambray (7717A),
Light Blue Chambray (7717B)

Tailored fit - with standard collar

Navy Chambray (7696A) *as worn opposite,*
Light Blue Chambray (7696B)

S, M, L, XL, XXL, XXXL

NEW

Tailored Fit Moore Corduroy Jacket

98% cotton, 2% elastane. 341g. Machine washable.

Mocha (5399B) *as worn,*
Navy (5399A) *see page 7,*
Forest Green (5399C) *see page 63*

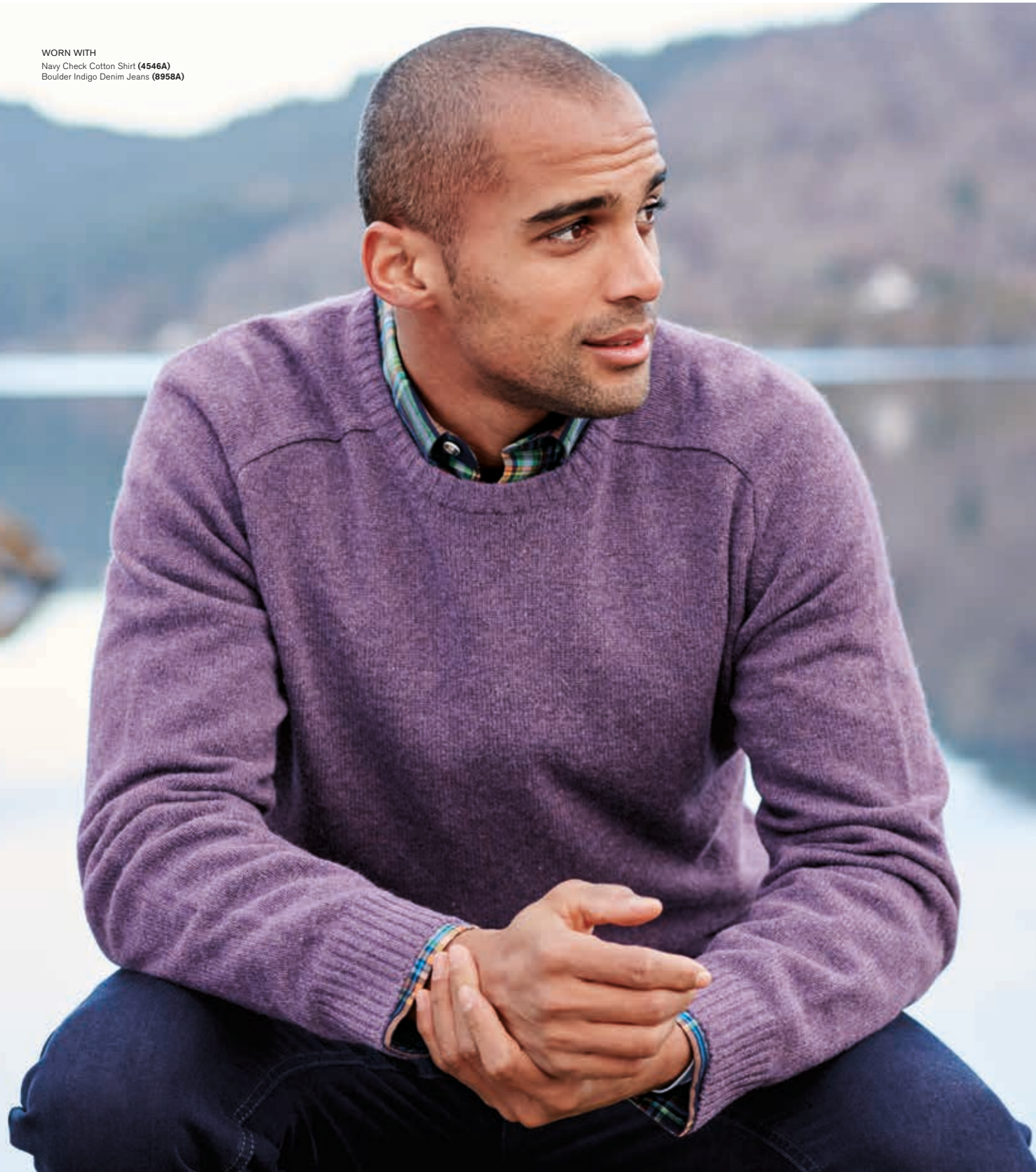
38" to 50" short, 38" to 54" regular, 40" to 50" long



WORN WITH

Hawkes White Cotton T-Shirt (4477B)
Ben Navy Cotton Stretch Chinos (8967AT)
Chelmsford Brown Leather Belt (1786A)

WORN WITH
Navy Check Cotton Shirt (4546A)
Boulder Indigo Denim Jeans (8958A)



Supersoft Lambswool Rich Knitwear

80% lambswool, 20% nylon. 7 gauge.

S, M, L, XL, XXL, XXXL

Charlbury Crew Neck

Winter White (7937T),
Ember (7937N),
Wine (7937J),
Heather (7937R) *as worn opposite*,
Forest (7937C),
Sky Blue (7937S),
Teal (7937L),
Navy (7937A)

Barton V-Neck

Winter White (7936T),
Ember (7936N),
Wine (7936J),
Heather (7936R),
Forest (7936C),
Sky Blue (7936S),
Teal (7936L),
Navy (7936A)



Winter White

Ember

Wine

Heather

Forest

Sky Blue

Teal

Navy

TWO STYLES, EIGHT COLOURS



NEW

Sheridan Cotton Rugby Sweatshirt

100% cotton.

Navy (4512A) *as worn*,
Brick (4512B) *see online*

S, M, L, XL, XXL, XXXL

WORN WITH

Ben Navy Cotton Stretch Chinos (8967AT)



Dawson Pure Cotton Quilted Sweatshirt

60% cotton, 40% polyester.

Airforce Blue (4354B),
Paprika (4354A)

S, M, L, XL, XXL, XXXL

WORN WITH

Hawkes Navy Cotton T-Shirt (4477A)
Boulder Charcoal Denim Jeans (8958E)



WORN WITH

Hawkes Navy Cotton T-Shirt (4477A)
Boulder Charcoal Denim Jeans (8958E)



NEW

Kirby Cotton THERMOLITE® Zip Neck Jumper

50% cotton, 40% THERMOLITE® polyester,
10% Merino wool. 12 gauge.

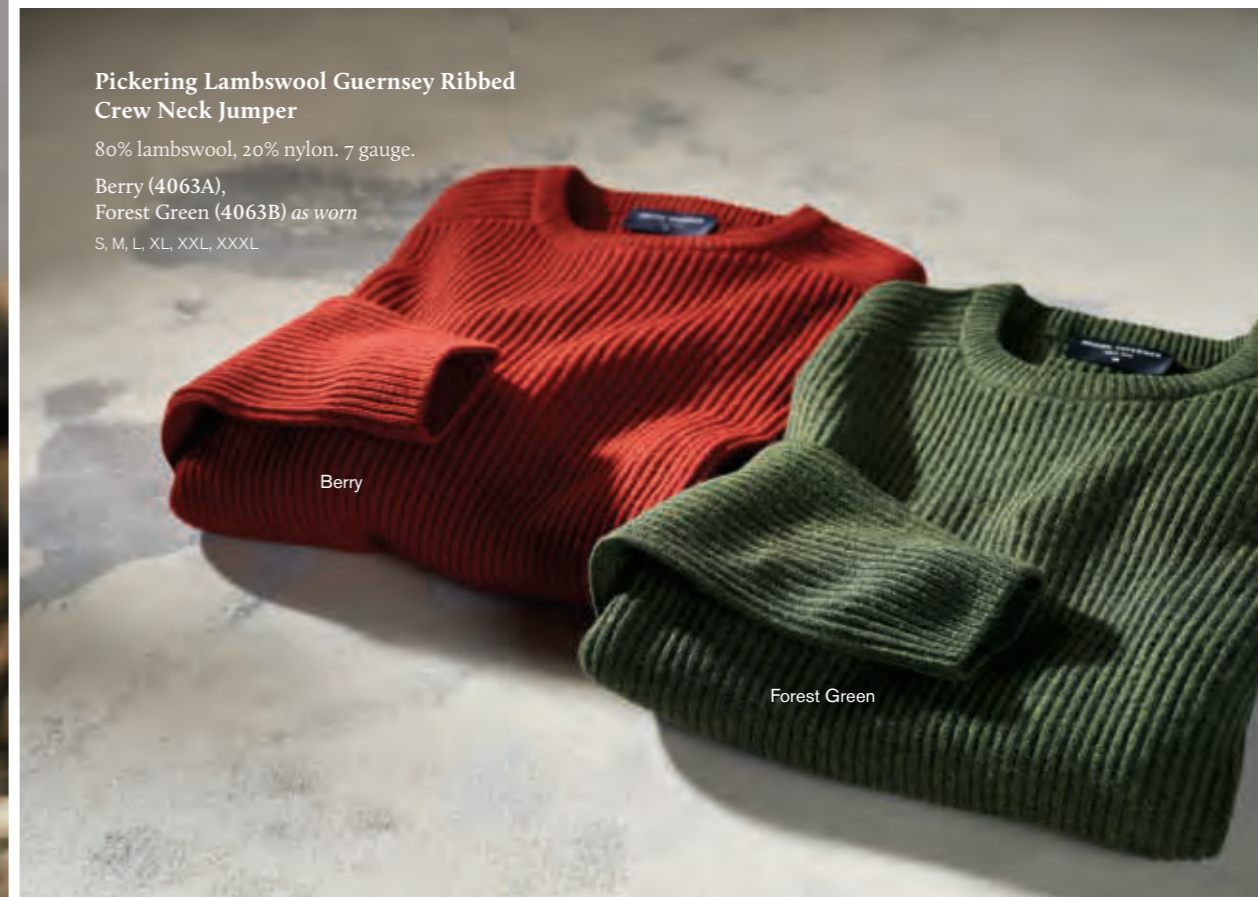
Rust (4524B) *as worn*,
Blue (4524A) *see online*

S, M, L, XL, XXL

WORN WITH
Navy Tattersall Check Cotton Shirt (4557A)
Seychelles Navy Cotton Twill Trousers (8935AT)



WORN WITH
Cunningham Stone Supima® Corduroy Jeans (8017A)



**Pickering Lambswool Guernsey Ribbed
Crew Neck Jumper**

80% lambswool, 20% nylon. 7 gauge.

Berry (4063A),
Forest Green (4063B) *as worn*

S, M, L, XL, XXL, XXXL

Berry

Forest Green



Sowe Oatmeal Lambswool Multi-Hoop Zip Neck Jumper (4401A)

80% wool, 20% nylon. 7 gauge. Hand wash only.
S, M, L, XL, XXL, XXXL

WORN WITH
Navy Knitted Piqué Shirt (4404AT)
Boulder Black Denim Jeans (8958D)



NEW

McSweeney Blue Houndstooth Lambswool Crew Neck Jumper (4528A)

80% lambswool, 20% nylon. 5 gauge. Hand wash only.
S, M, L, XL, XXL



WORN WITH
Light Blue Super Soft Chambray Cotton Shirt (7717B)
Aristotle Navy Textured Cotton Stretch Chinos (8962AT)

NEW

Fielding Rust Hoop Lambswool Zip Neck Jumper (4525A)

80% lambswool, 20% nylon. 7 gauge. Hand wash only.
S, M, L, XL, XXL

Luxury Cotton Merino Wool Knitwear

50% Merino wool, 50% cotton. 12 gauge.

Dorset V-Neck Jumper (4197A - L)

Devon Crew Neck Jumper (4198A - L)

Cornwall Roll Neck Jumper (4199A - L)

Sussex Zip Neck Jumper (4200A - L)

Charcoal as worn

Somerset Zip Through Cardigan (4201A - L)

S, M, L, XL, XXL, XXXL

See online for full range



WORN WITH
Mid Blue Supersoft Cotton Melange Shirt (7994B)
Miami Sand Chinos (8807B)



FIVE STYLES, FIVE COLOURS



Cashmere Knitwear

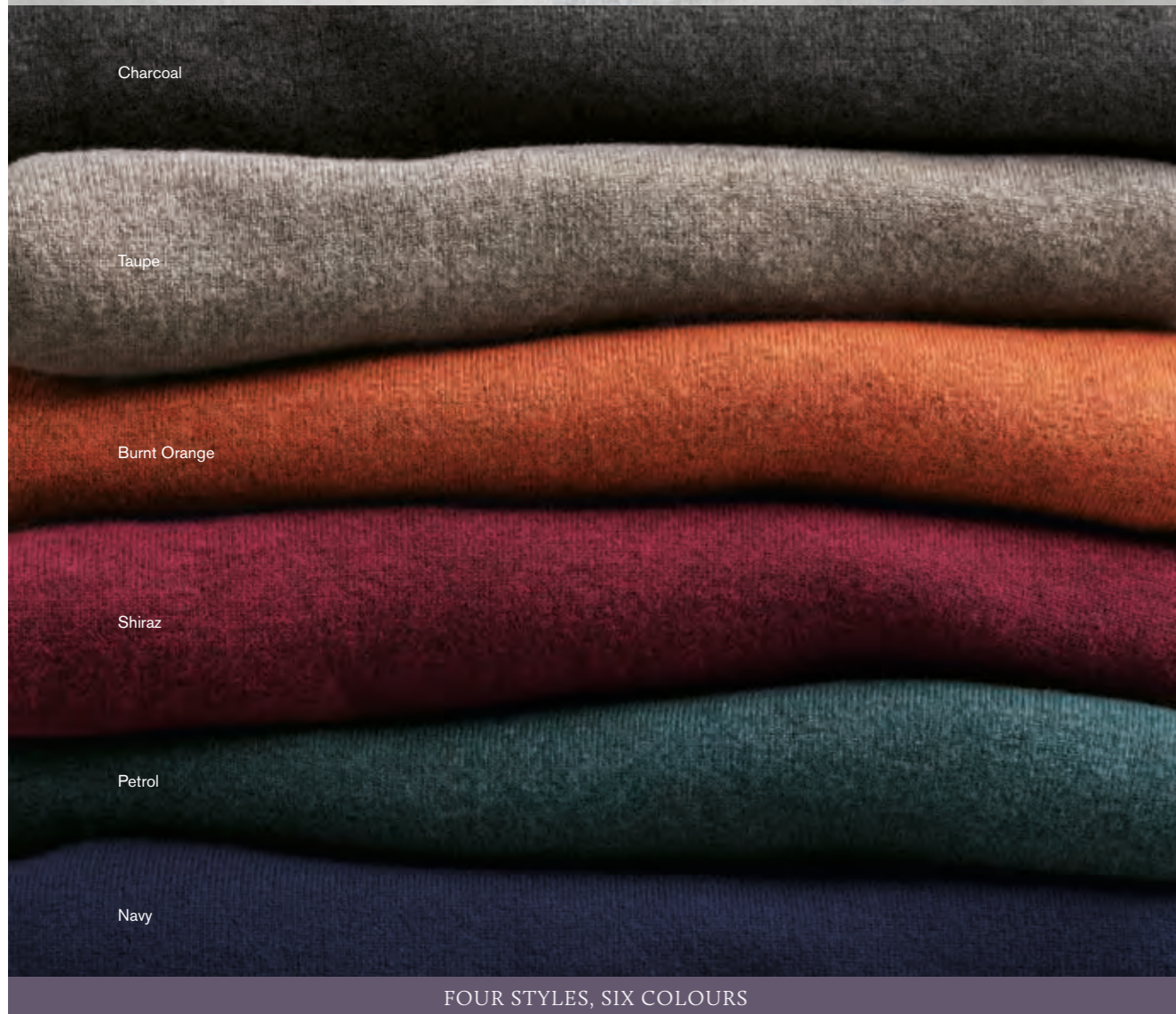
100% Mongolian cashmere. 14 gauge. Cold hand wash only.
S, M, L, XL, XXL, XXXL

Cashmere V-Neck Jumper (4075A - F)

Cashmere Crew Neck Jumper (4076A - F) *Charcoal as worn*

Cashmere Roll Neck Jumper (4078A - F)

Cashmere Zip Neck Jumper (4077A - F)



Charcoal

Taupe

Burnt Orange

Shiraz

Petrol

Navy

FOUR STYLES, SIX COLOURS



Tailored Fit Tyburn Navy Wool Blend Jacket (3765A)

50% wool, 30% polyester, 20% cotton. 236g.
36" to 50" short, 36" to 54" regular, 38" to 50" long

WORN WITH
Ellroy Camel Stretch Cord Trousers (8689B)



**Tailored Fit Sumburgh Green and Blue Check
Harris Tweed® Jacket (3540A)**

100% pure new wool. 470g.
36" to 50" short, 36" to 54" regular, 38" to 50" long

WORN WITH
Waver Winter White Turtle Neck Jumper (4382B)
Boulder Black Denim Jeans (8958D)



Harris Tweed
Woven by hand in the Western Isles of Scotland



NEW
COLOUR
ADDED

Winter White

Ice Blue

Mustard

Waver Turtle Neck Jumper

80% wool, 20% nylon. 3 gauge. Hand wash only.

Winter White (4382B) *as worn*,
Ice Blue (4382C),
Mustard (4382E)

S, M, L, XL, XXL, XXXL





WORN WITH
Chelmsford Brown Leather Belt (1786A)



Tailored Fit Magnum Navy Check Wool Jacket (3659A)

100% pure new wool. 385g.
36" to 50" short, 36" to 54" regular, 38" to 50" long

NEW

Business Casual Print Cotton Shirts

Available in Regular and Tailored Fit

100% cotton.
Collar (inches) 15, 15.5, 16, 16.5, 17, 17.5, 18, 18.5, 19, 20

1. Multicoloured Floral (4559E)
2. Blue Square (4559B) *as worn*
3. Multicoloured Square (4559A)
4. Blue Car Stripe (4559C) *regular fit only*
5. White Bird (4559D)
6. Navy Floral (4559F)

Email: orders@brooktaverner.com



Harris Tweed
Woven by hand in the Western Isles of Scotland

WORN WITH
Bennett Grey Pure Cotton Polo Shirt (4516B)
Bryan Navy Lambswool Cardigan (4564A)

**Regular Fit Stromay Olive Check Harris Tweed®
Jacket (3626A)**

100% pure new wool. 470g.
36" to 50" short, 36" to 54" regular, 38" to 50" long



NEW

**Regular Fit Hawley Chestnut Puppytooth
Wool Jacket (5402A)**

100% pure new wool. 256g.
38" to 50" short, 38" to 54" regular, 40" to 50" long

WORN WITH
Waver Winter White Turtle Neck Jumper (4382B)
Boulder Black Denim Jeans (8958D)



Plain Comfort Stretch Knitted Piqué Shirts

Available in Regular and Tailored Fit

100% cotton piqué.

1. Sky Blue (4404C)
 2. Biscuit (4404D)
 3. Navy (4404A) *as worn opposite*
 4. Wine (4404B)
- S, M, L, XL, XXL, XXXL



Tailored Fit Stranraer Navy Herringbone Harris Tweed® Jacket (3541A)

100% pure new wool. 470g.

36" to 50" short, 36" to 54" regular, 38" to 50" long



Harris Tweed
Woven by hand in the Western Isles of Scotland



WORN WITH
Plockton Navy Merino Wool Long Sleeve Polo Shirt (4013A)



Sand

Stone

Navy

Khaki

Tailored Fit Breedon Fern Check Wool Jacket (3703A) - opposite

100% pure new wool 405g.
36" to 50" short, 36" to 54" regular, 38" to 50" long

NEW

Tailored Fit Cunningham Supima® Corduroy Jeans

98% cotton, 2% elastane. 270g.

Sand (8017B),
Stone (8017A) *as worn*,
Navy (8017D),
Khaki (8017C)

Waist 30" to 48". Leg length 29.5" to 37".



Tailored Fit Haincliffe Wool Jacket

100% pure new wool. 375g.

Green Check (3869B) as worn,
Blue Check (3869A)

36" to 54" short, 36" to 54" regular, 38" to 54" long

See pages 40 & 41 for Suit

WORN WITH

Charlbury Navy Lambswool Jumper (7937A)
Boulder Vintage Blue Denim Jeans (8958C)

FABRIC
WOVEN BY
ABRAHAM MOON
OF YORKSHIRE

NEW

Fallon Taupe Twill Overshirt (9132A)

95% polyester, 5% wool. 650g. Dry clean only.

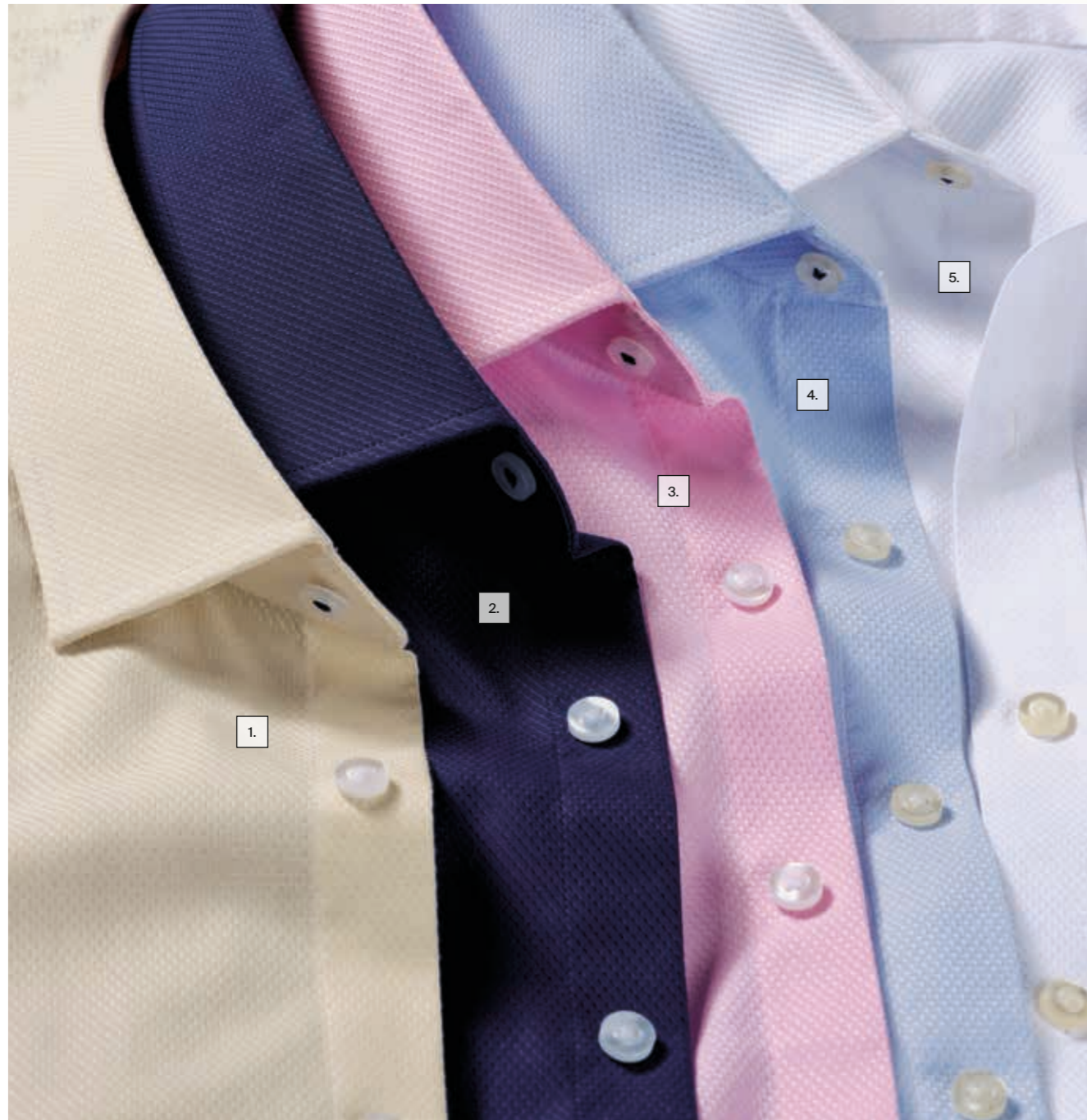
S, M, L, XL, XXL, XXXL

WORN WITH

Waver Winter White Turtle Neck Jumper (4382B)

Boulder Indigo Denim Jeans (8958A)





Formal Semi-Plain Cotton Shirts

Available in Regular and Tailored Fit and Single or Double Cuff

100% cotton.

- 1. Cream (4324E)
- 2. Navy (4324D) *as worn*
- 3. Pink (4324C)
- 4. Sky Blue (4324B)
- 5. White (4324A)

Collar (inches) 15, 15.5, 16, 16.5, 17, 17.5, 18, 18.5, 19, 19.5, 20

Regular Fit Helsinki Olive Check Pure New Wool Jacket (3110A)

100% pure new wool. 370g.
36" to 50" short, 36" to 54" regular, 38" to 50" long

WORN WITH
Boulder Vintage Blue Denim Jeans (8958C)
Durham Brown Leather Plaited Belt (1783A)



NEW

Regular Fit Brennan Single Pleat Textured Cotton Stretch Chinos

97% cotton, 3% elastane. 275g.

Sand (8018B),
Khaki (8018C) *as worn*,
Mocha (8018D),
Navy (8018A)

Waist 30" to 48". Leg length 29.5" to 37".



Regular Fit Camberley Navy Check Pure New Wool Jacket (5525C)

100% pure new wool. 385g.

36" to 54" short, 36" to 60" regular, 38" to 54" long



WORN WITH
Bennett Grey Pure Cotton Long Sleeve
Polo Shirt (4516B)

WORN WITH
Cornwall Black Roll Neck Cotton Merino Jumper (4199L)



Tailored Fit Haincliffe Wool Suit

100% pure new wool. 375g.

JACKET

Blue Check (3869A),
Green Check (3869B)

36" to 54" short, 36" to 54" regular, 38" to 54" long

TROUSER

Blue Check (8870A),
Green Check (8870B)

Waist 30" to 48". Leg length 29.5" to 37".

WAISTCOAT

Blue Check (1562A) *see online*,
Green Check (1562B)

36" to 54" regular

WORN WITH
Pink with Cerise Floral Trim Shirt (4426HR)
Navy Twill Pure Silk Tie (1635A)

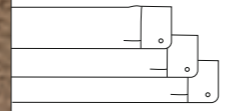


FABRIC
WOVEN BY
ABRAHAM MOON
OF YORKSHIRE

WORN WITH
Hawkes White Cotton T-Shirt (4477B)



THREE SLEEVE
LENGTHS AVAILABLE
33.5" (S), 35" (R) & 36.5" (L)



NEW

Hampson Charcoal Melange Quilted Jacket (9152A)

66% nylon, 34% polyester. 170g.
Machine washable.
S, M, L, XL, XXL, XXXL

Regular Fit Supersoft Cotton Melange Shirts

Available in Three Sleeve Lengths

100% cotton.

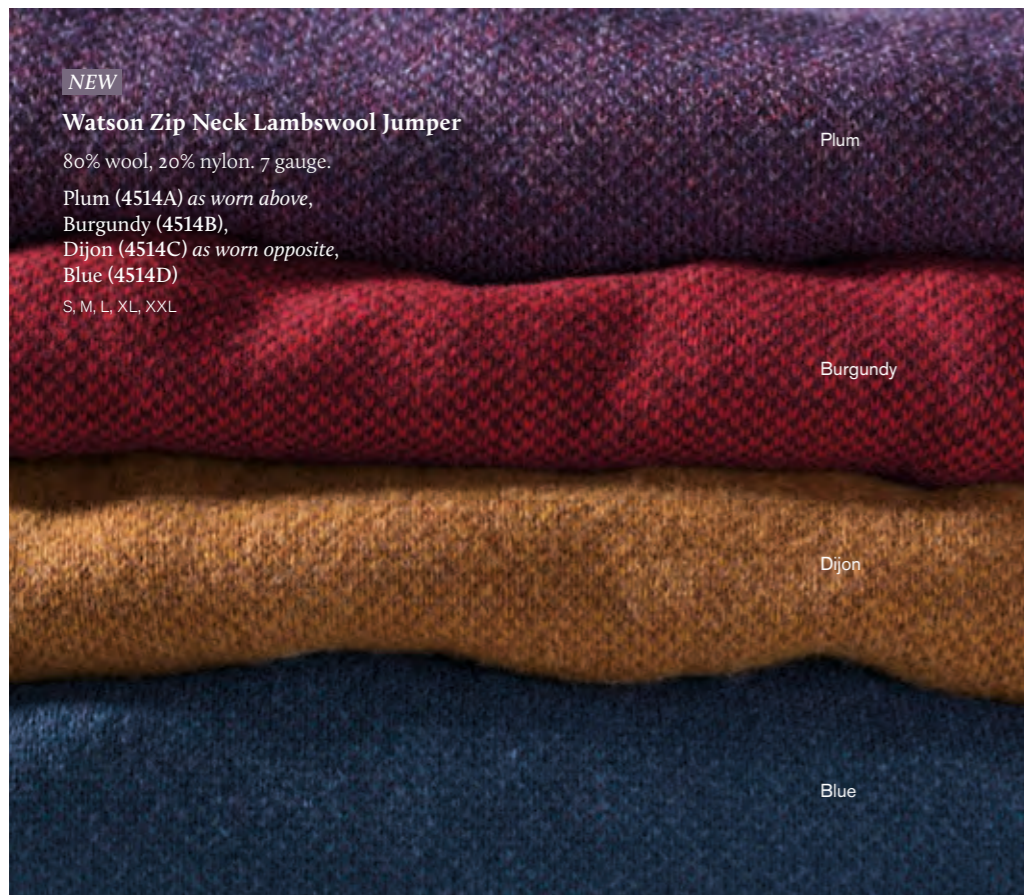
1. Rose (7994A)
2. Mid Blue (7994B) *as worn*
3. Fern (7994D)
4. Sand (7994C)

Collar (inches) 15, 15.5, 16, 16.5, 17, 17.5, 18, 18.5, 19, 19.5, 20

Email: orders@brooktaverner.com



WORN WITH
Hawkes White Cotton T-Shirt (4477B)
Plum Melange Check Cotton Shirt (4539D)
Olney Airforce Blue Flannel Trousers (8706ET)



NEW
Watson Zip Neck Lambswool Jumper
80% wool, 20% nylon. 7 gauge.
Plum (4514A) as worn above,
Burgundy (4514B),
Dijon (4514C) as worn opposite,
Blue (4514D)
S, M, L, XL, XXL

Plum

Burgundy

Dijon

Blue



NEW
**Tailored Fit Stevens Blue Check Textured
Wool Blend Jacket (5410A)**

45% wool, 30% polyester, 15% acrylic, 5% silk,
5% other fibres. 320g.
38" to 48" short, 38" to 54" regular, 40" to 48" long

WORN WITH
Hawkes White Cotton T-Shirt (4477B)
Boulder Indigo Denim Jeans (8958A)

WORN WITH
Hawkes Navy Cotton T-Shirt (4477A)
Boulder Indigo Denim Jeans (8958A)

WORN WITH
Hawkes White Cotton T-Shirt (4477B)
Boulder Off White Denim Jeans (8958F)



SIMON WEARS

NEW

Aldred Oatmeal Fairisle Lambswool Jumper (4563A)

80% lambswool, 20% nylon. 3 gauge. Hand wash only.

S, M, L, XL, XXL

REMY WEARS

NEW

Larson Navy Fairisle Lambswool Jumper (4522A)

80% lambswool, 20% nylon. 5 gauge.

S, M, L, XL, XXL



NEW

Northumberland Antiqued Camel Aviator Jacket (9154A)

Leather. Specialist clean only.
M, L, XL, XXL

WORN WITH
Oatmeal Cashmere Knitted Beanie Hat (1868A)
Dobbs Wine Zip Neck Lambswool Jumper (4521B)
Cunningham Stone Supima® Corduroy Jeans (8017A)



WORN WITH
Oatmeal Cashmere Knitted Beanie Hat (1868A)
Cunningham Stone Supima® Corduroy Jeans (8017A)



NEW

Dobbs Zip Neck Lambswool Jumper

80% lambswool, 20% nylon. 5 gauge.

Navy (4521A),
Wine (4521B)

S, M, L, XL, XXL

WORN WITH
Airforce Blue Melange Check Cotton Shirt (4539B)
Hawkes White Cotton T-Shirt (4477B)
Cunningham Stone Supima® Corduroy Jeans (8017A)

New Forest Leather Baffle Jacket

100% leather. Specialist clean only.

Black (9108A) as worn,
Oxblood (9108B) as worn opposite

S, M, L, XL, XXL

WORN WITH

Cornwall Claret Roll Neck Cotton Merino Jumper (4199E)
Boulder Indigo Denim Jeans (8958A)



NEW

Regular Fit Cotton Moleskin Shirts

100% cotton.

Caramel (4534A) as worn,
Navy (4534B) as worn below

S, M, L, XL, XXL, XXXL



WORN WITH

Hawkes White Cotton T-Shirt (4477B)
Boulder Indigo Denim Jeans (8958A)

WORN WITH

Oatmeal Cashmere Knitted Beanie Hat (1868A)
Hawkes White Cotton T-Shirt (4477B)



Lune Lattice Stitch Crew Neck Jumper

80% wool, 20% nylon. 7 gauge.

Winter White (4391B) as worn,
Blue (4391A)

S, M, L, XL, XXL, XXXL



Winter White

Blue



WORN WITH
Boulder Charcoal Denim Jeans (8958E)

NEW

Niven Khaki Faux Suede Padded Jacket (9142A)

100% polyester. 390g. Dry clean only.

S, M, L, XL, XXL, XXXL





NEW

Brooke Black Cotton Carbon Finish Jacket (9125A)

100% cotton twill with carbon coating. 270g. Machine washable.

S, M, L, XL, XXL, XXXL

WORN WITH

Waver Winter White Turtle Neck Jumper (4382B)
Boulder Black Denim Jeans (8958D)



WORN WITH
Charlbury Wine Lambswool Jumper (7937J)
Boulder Black Denim Jeans (8958D)



WORN WITH
Cornwall Stone Roll Neck Jumper (4199B)
Chestnut Nubuck Lightweight Chukka Boot (1822B)



NEW

Starkey Navy Padded Jacket (9138A)

100% polyester. 170g. Machine washable.
S, M, L, XL, XXL, XXXL

NEW

Tailored Fit Wine Check Cotton Shirt (4545A)

100% cotton.
S, M, L, XL, XXL, XXXL

STYLED WITH
Olive Waxed Baseball Cap (1924B)
Boulder Indigo Denim Jeans (8958A)



WORN WITH
Navy Tattersall Check Cotton Shirt (4557A)
Boulder Charcoal Denim Jeans (8958E)



NEW

Richards Corduroy Overshirt

99% cotton, 1% elastane. 385g. Machine washable.

Moss (9133A) *as worn*,
Camel (9133B) *as worn opposite*

S, M, L, XL, XXL, XXXL

WORN WITH
Navy Check Cotton Shirt (4546AT)



NEW

Norton Button Neck Lambswool Jumper

80% wool, 20% nylon. 3 gauge. Hand wash only.

Oatmeal (4519A) *as worn above*,
Slate (4519B) *as worn opposite*

S, M, L, XL, XXL, XXXI



SIMON WEARS

NEW

Richards Corduroy Overshirt - left

99% cotton, 1% elastane. 385g.
Machine washable.

Camel (9133B) as worn,
Moss (9133A) see page 59

S, M, L, XL, XXL, XXXL

WORN WITH

Navy Cotton Moleskin Shirt (4534B)
Boulder Charcoal Denim Jeans (8958E)

REMY WEARS

NEW

Fitzgerald Chocolate Check Overshirt (9131A) - centre

95% polyester, 5% wool. 650g.
Dry clean only.

S, M, L, XL, XXL, XXXL

WORN WITH

Sheridan Navy Cotton Rugby Sweatshirt (4512A)
Ben Navy Cotton Stretch Chinos (8967A1)

JOSS WEARS

NEW

Fallon Taupe Twill Overshirt (9132A) - right

95% polyester, 5% wool. 650g. Dry clean only.

S, M, L, XL, XXL, XXXL

WORN WITH

Charlbury Winter White Lambswool Jumper (7937T)
Boulder Vintage Blue Denim Jeans (8958C)
Brown Leather Weekend Bag (1248A)



Seychelles Winter Weight Cotton Twill Trousers

Available in Regular and Tailored Fit

60% cotton, 38% polyester, 2% elastane. 330g.

Olive (8935C),
Gunmetal Grey (8935E),
Rust (8935G),
Sand (8935F),
Navy (8935A) *as worn*

Waist 30" to 48". Leg length 29.5" to 37".

NEW
COLOURS
ADDED



Olive

Gunmetal Grey

Rust

Sand

Navy

TWO FITS, FIVE COLOURS



NEW

Tailored Fit Moore Corduroy Jacket

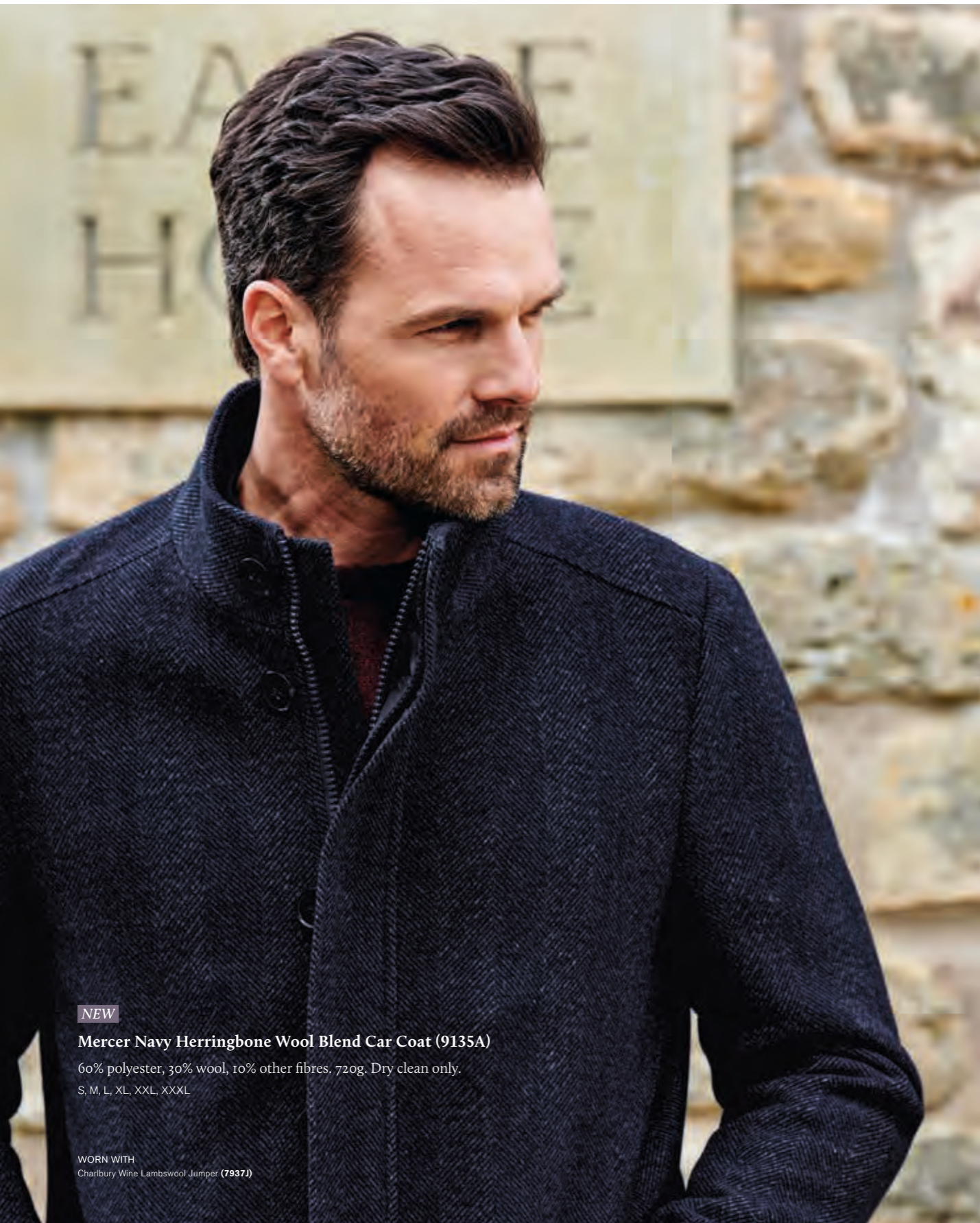
98% cotton, 2% elastane. 341g. Machine washable.

Forest Green (5399C) *as worn*,
Navy (5399A) *see page 7*,
Mocha (5399B) *see page 9*

38" to 50" short, 38" to 54" regular, 40" to 50" long

WORN WITH

Navy Tattersall Check Shirt (4557A)
Kirby Rust Cotton THERMOLITE® Zip Neck Jumper (4524B)
Brown Leather Weekend Bag (1248A)



NEW

Mercer Navy Herringbone Wool Blend Car Coat (9135A)

60% polyester, 30% wool, 10% other fibres. 720g. Dry clean only.

S, M, L, XL, XXL, XXXL

WORN WITH

Charlbury Wine Lambswool Jumper (7937J)



Bradshaw Navy Shortie Raincoat (9967A)

- with zip out mock gilet

100% polyester. 155g. Machine washable.

38" to 54" regular

WORN WITH

Navy Waxed Baseball Cap (1924A)

Sky Blue with Terrier Trim Shirt (4426KR)

Charlbury Winter White Lambswool Jumper (7937T)

Kerswell Stone Cotton Moleskin Trousers (8872C)



Morris Half-Zip Bonded Fleece
 100% polyester.
 Olive (4357B) as worn,
 Winter White Nep (4357A) as styled below
 S, M, L, XL, XXL, XXXL

NEW
 COLOUR
 ADDED

WORN WITH
 Hawkes White Cotton T-Shirt (4477B)



WORN WITH
 Hawkes White Cotton T-Shirt (4477B)
 Boulder Indigo Denim Jeans (8958A)



WORN WITH
 Turquoise Jaspe Check Cotton Shirt (4537A)
 Rust Jaspe Check Cotton Shirt (4537B)
 Boulder Vintage Blue Denim Jeans (8958C)



NEW
Turner Fine Rib Cotton Zip Neck Sweatshirt
 100% cotton.
 Mustard (4510A) as worn above,
 Blue (4510B) as worn
 S, M, L, XL, XXL, XXXL

WORN WITH
 Hawkes White Cotton T-Shirt (4477B)

NEW

Hutchinson Wool Blend Shortie Overcoat

50% wool, 50% other fibres. 595g. Dry clean only.

Navy (9153A) as worn opposite top,
Camel (9153B) as worn

38" to 54" regular.

NEW

Noah Brick Stitch Cotton Crew Neck Jumper

100% cotton. 12 gauge.

Grey (4453C) as worn opposite,
Mocha (4453D) as worn

S, M, L, XL, XXL, XXXL

WORN WITH
Cunningham Navy Supima® Corduroy
Jeans (8017D)
Brown Leather Weekend Bag (1248A)



WORN WITH
Charcoal Check Lambswool Scarf (1919B)
Noah Grey Brick Stitch Cotton Jumper (4453C)
Blue Herringbone Double Cuff Cotton Shirt (7720B)
Cunningham Navy Supima® Corduroy Jeans (8017D)





WORN WITH
White Semi-Plain Double Cuff Cotton Shirt (4324A)
Rust Geometric Pattern Tie (1928F)
Chelmsford Brown Leather Belt (1786A)



Tailored Fit Wells Wool Blend Suit

40% wool, 29% polyester, 28% viscose, 3% elastane. 330g.

JACKET

Navy (5286A) *as worn*,
Charcoal (5286B) *as worn opposite*

38" to 54" short, 36" to 54" regular, 38" to 54" long.

TROUSER

Navy (8972A) *as worn*,
Charcoal (8972B) *as worn opposite*

Waist 30" to 50". Leg length 29.5" to 37".

WAISTCOAT

Navy (1807A) *as worn*,
Charcoal (1807B) *as worn opposite*

36" to 54" regular.

WORN WITH
White Single Cuff Cotton Shirt (4324A)
Blue Floral Tie and Hankie Set (1927B)



WORN WITH
 White Herringbone Double Cuff Cotton
 Shirt (7720A)
 Wine with Pheasants Tie (1928K)



Tailored Fit Clifford Donegal Wool Suit
 100% pure new wool. 385g.

JACKET

Navy Donegal (3607C) *as worn*,
 Grey Donegal (3607B) *as worn opposite centre*
 36" to 50" short, 36" to 54" regular, 38" to 46" long.

TROUSER

Navy Donegal (8776C) *as worn*,
 Grey Donegal (8776B) *as worn opposite centre*
 Waist 30" to 46". Leg length 29.5" to 37".

WAISTCOAT

Navy Donegal (1409C) *as worn*,
 Grey Donegal (1409B) *as worn opposite centre*
 36" to 50" regular

WORN WITH
 Blue and Purple Floral Print Cotton
 Shirt (4525AT)
 Navy Twill Pure Silk Tie (1635A)



Regular Fit 'Peached Finish' Cotton Oxford Shirts

100% cotton.

- 1. Navy Check (4314AC)
 - 2. Wine Check (4314EC) *as worn*
- S, M, L, XL, XXL, XXXL

WORN WITH
Yeo Navy Winter Weight THERMOLITE® Trousers (8996AT)
Truro Black and Tan Reversible Leather Belt (1778A)



1.

2.

NEW
COLOUR
ADDED

NEW

Business Casual Dobby and Check Cotton Shirts

Available in Regular and Tailored Fit

100% cotton.

- 1. Red and Blue Dobby (4562A)
- 2. Blue Dobby (4562B)
- 3. Red and Blue Check (4558A) *regular fit only,*
- 4. Blue and Mint Check (4558B) *regular fit only*

Collar (inches) 15, 15.5, 16, 16.5, 17, 17.5, 18, 18.5, 19, 20



1.

2.

3.

4.

Business Casual Plain and Print Cotton Stretch Shirts

Available in Regular and Tailored Fit

97% cotton, 3% elastane.

1. Blue and Purple Floral (4425A) as worn
2. Cerise Floral (4425B)
3. Navy and Blue Terrier (4425C)
4. Blue, Sky Blue and Lilac Butterfly (4425D)

Collar (inches) 15, 15.5, 16, 16.5, 17, 17.5, 18, 18.5, 19, 19.5, 20



Olney Flannel Trousers

Available in Regular and Tailored Fit

60% wool, 38% polyester,
2% elastane. 340g.

Caramel (8706A),
Olive (8706B),
Airforce Blue (8706E),
Navy (8706F) as worn,
Charcoal (8706D),
Black (8706G) regular fit only

Waist 30" to 48". Leg length 29.5" to 37".



TWO FITS, SIX COLOURS

NEW

Aristotle Textured Cotton Stretch Chinos

Available in Regular and Tailored Fit

98% cotton, 2% elastane. 275g.

Navy (8962A),
Caramel (8962B),
Charcoal (8962D),
Sand (8962C) as worn

Waist 30" to 48". Leg length 29.5" to 37".



TWO FITS, FOUR COLOURS



Business Casual Royal Oxford Check Shirts

Available in Regular and Tailored Fit

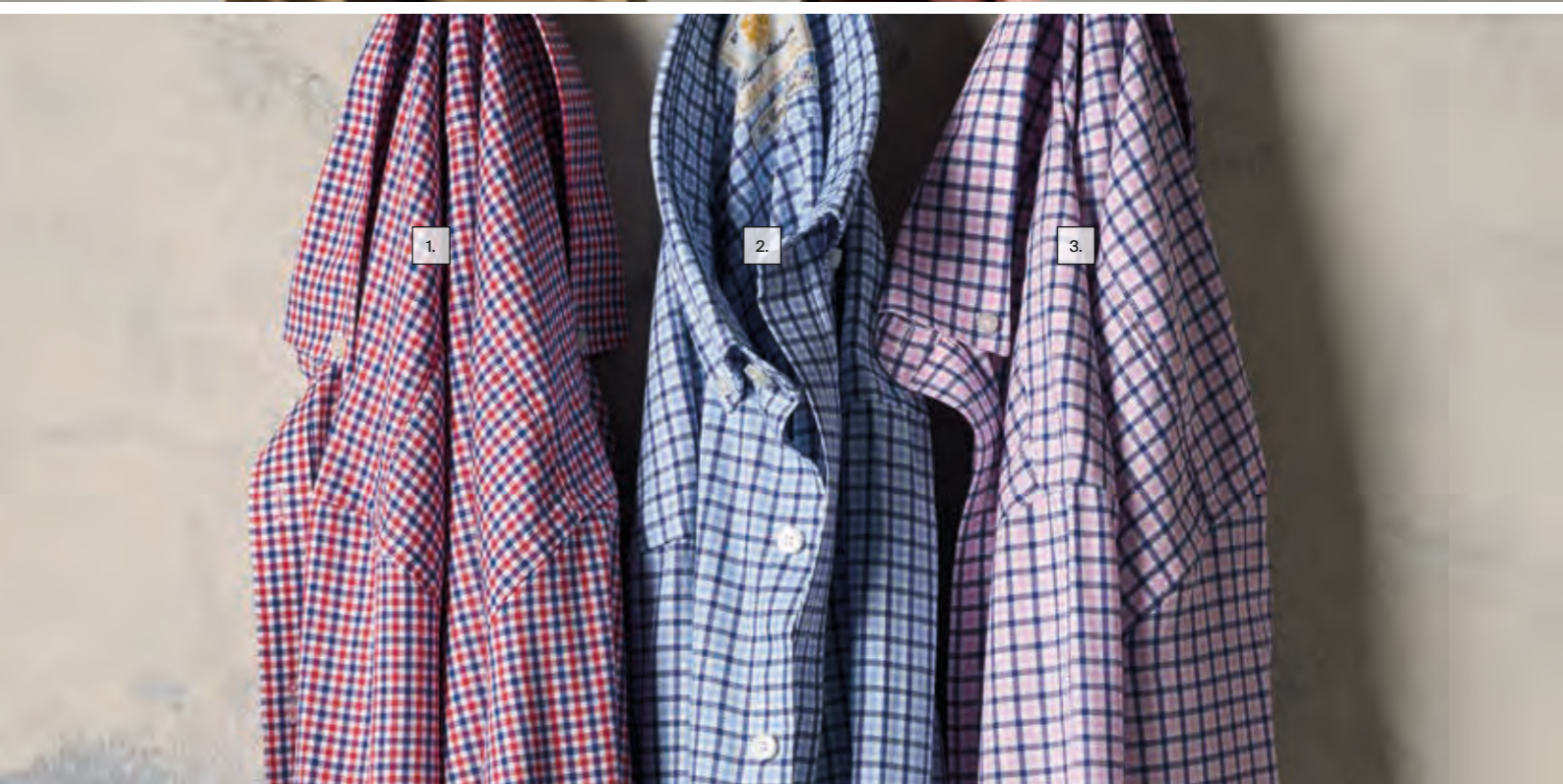
100% cotton.

1. Navy, Red and White Check (4427A)
2. Navy, Sky Blue and White Check (4427B)
3. Navy, Pink and White Check (4427C) as worn

Collar (inches) 15, 15.5, 16, 16.5, 17, 17.5, 18, 18.5, 19, 19.5, 20

WORN WITH

Warwick Tan and B Reversible Leather Belt (1785A)





Regular Fit Business Casual Jaspe Gingham Shirts

100% cotton.

Bordeaux (4424B) *as worn*,
Sky Blue (4424A) *see online*,
Navy (4424C) *see online*

Collar (inches) 15, 15.5, 16, 16.5, 17, 17.5, 18, 18.5, 19, 19.5, 20

WORN WITH
Warwick Tan and Black Reversible Leather Belt (1785A)

Regular Fit Ellroy Stretch Cord Trousers

99% cotton, 1% elastane 370g. 8 wale.

Navy (8689E),
Cherry (8689C),
Camel (8689B),
Ginger (8689F),
Black (8689G),
Olive (8689D) *as worn*

Waist 32" to 46". Leg length 29.5" to 37".



Washed Cotton Oxford Shirts

Available in Regular and Tailored Fit

97% cotton, 3% elastane.

Long sleeve

1. Dark Blue (4214D)
2. Pink (4214C)
3. Blue (4214B)
4. White (4214A)

Short sleeve

1. Dark Blue (4215D)
2. Pink (4215C)
3. Blue (4215B)
4. White (4215A)

Grandad collar

1. Dark Blue (4216D)
2. Pink (4216C)
3. Blue (4216B)
4. White (4216A)

S, M, L, XL, XXL, XXXL



Single and Double Cuff Poplin and Herringbone Cotton Shirts

Available in Regular and Tailored Fit

100% cotton.

Regular Fit Single Cuff

1. White Herringbone (7655A)
2. Blue Herringbone (7655B)
3. Blue Poplin (7641B)
4. White Poplin (7641A)

Regular Fit Double Cuff

1. White Herringbone (7656A)
2. Blue Herringbone (7656B)
3. Blue Poplin (7642B)
4. White Poplin (7642A)

Tailored Fit Double Cuff

1. White Herringbone (7720A)
2. Blue Herringbone (7720B)
3. Blue Poplin (7643B)
4. White Poplin (7643A)

S, M, L, XL, XXL, XXXL

Email: orders@brooktaverner.com



NEW

Tailored Fit Floral Print Cotton Shirts

100% cotton.

1. Black (4550B) *as worn*
 2. Mauve (4550A) *as worn below*
- S, M, L, XL, XXL, XXXL

WORN WITH

Truro Black and Tan Reversible Leather Belt (1778A)

WORN WITH

Ben Navy Cotton Stretch Chinos (8967AT)



NEW

Tailored Fit Multicoloured Cotton Shirts

100% cotton.

1. Arrows (4547B)
 2. Gems (4547A)
- S, M, L, XL, XXL, XXXL



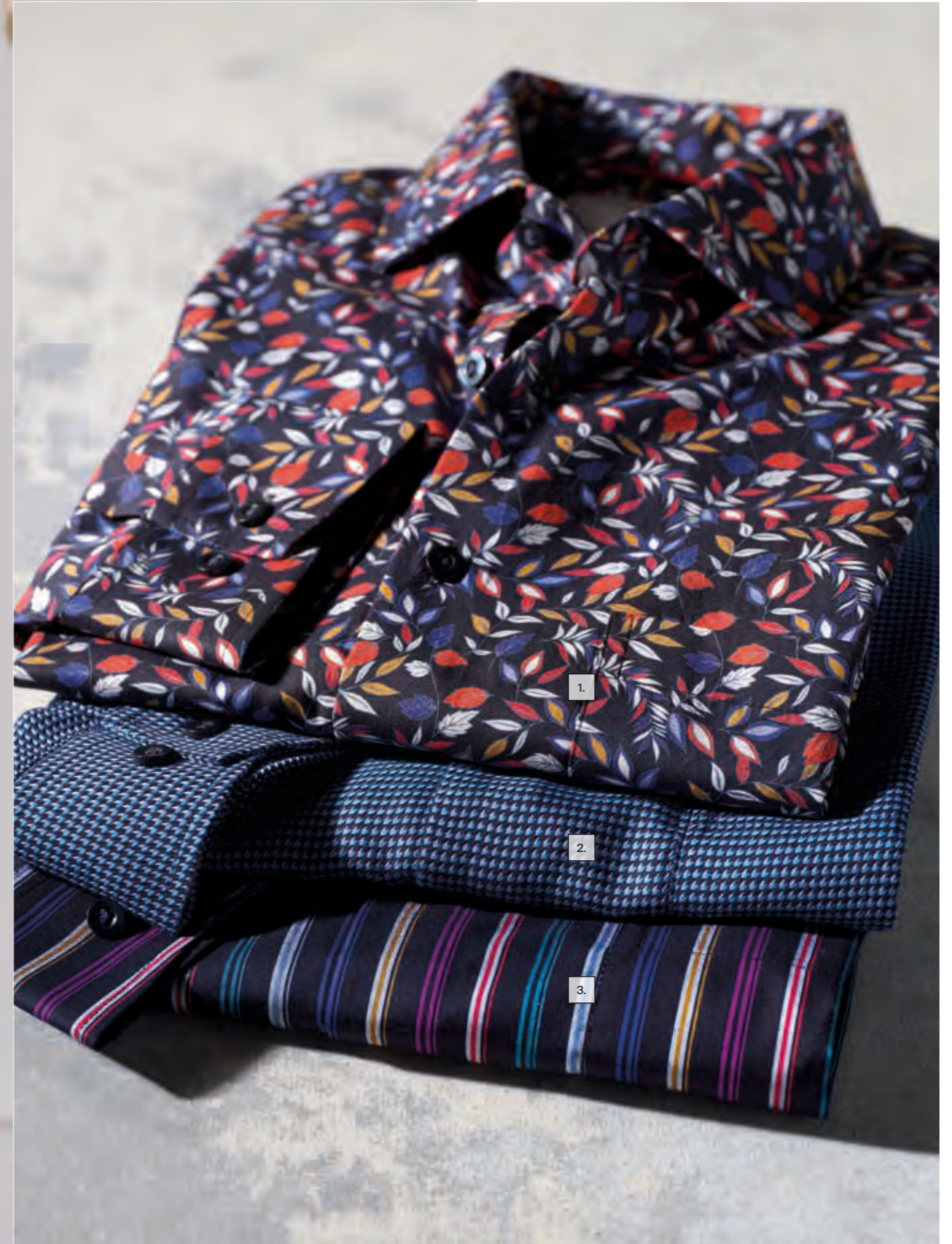
NEW

**Regular Fit Contemporary Occasion Print
and Dobby Shirts**

100% cotton.

1. Black Floral (4554B)
2. Navy Dobby (4554C)
3. Black Stripe (4554A) *as worn*

Collar (inches) 15, 15.5, 16, 16.5, 17, 17.5, 18, 18.5, 19, 20



WORN WITH
Truro Black and Tan Reversible Leather Belt (1778A)
Olney Black Flannel Trousers (8706G)

WORN WITH
Truro Black and Tan Reversible Leather Belt (1778A)

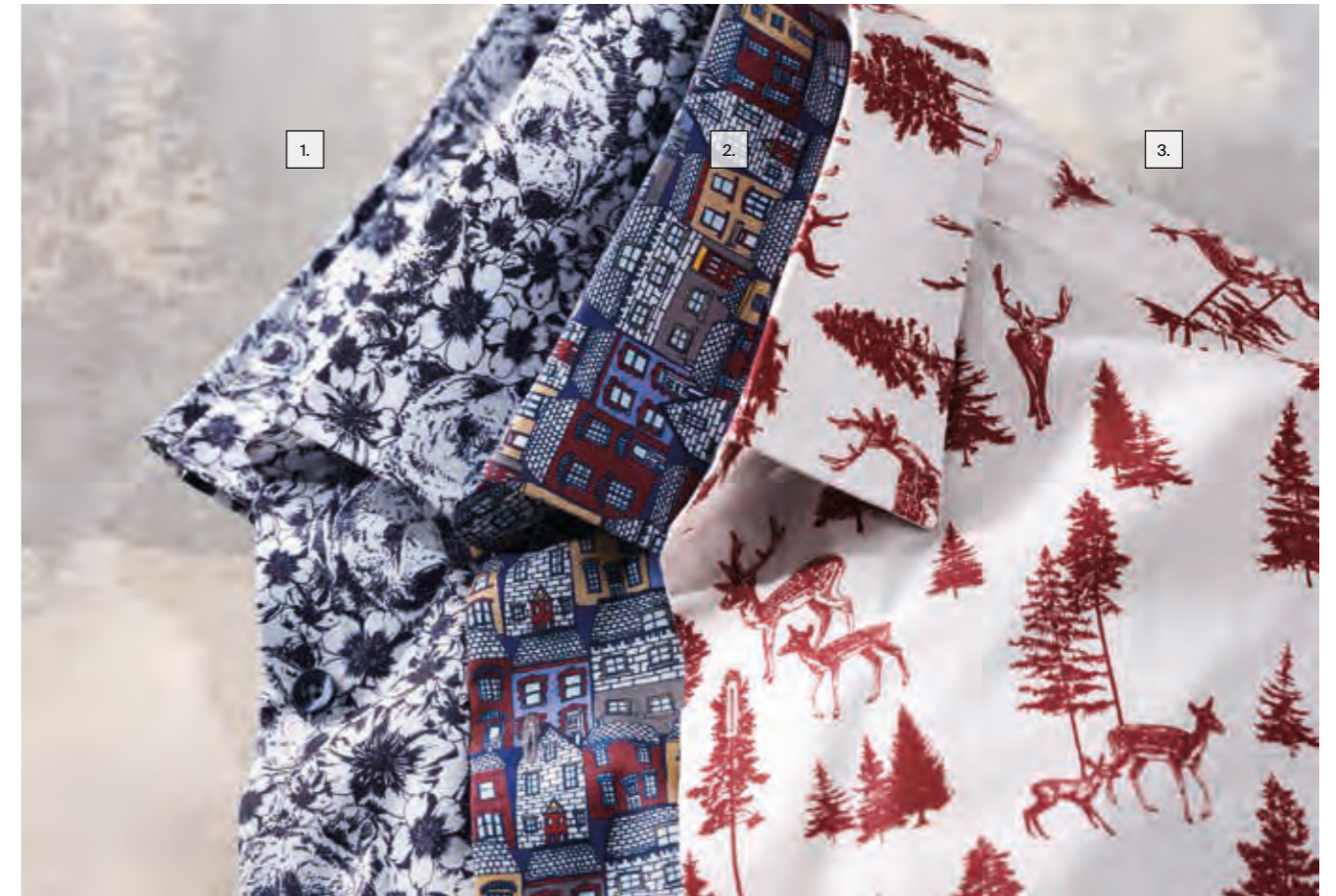
NEW

Regular Fit Cotton Shirts

100% cotton.

1. Navy Bear (4548C)
2. Multicoloured Houses (4548A) as worn
3. Wine Woodland (4548B)

S, M, L, XL, XXL, XXXL



Denver and Miami Cotton Stretch Chinos - an all-year round fabric

Available in Regular and Tailored Fit

97% cotton, 3% elastane. 238g.

Denver - Regular fit - pressed crease

Tan (8806G),
Royal Blue (8806F),
Olive (8806E),
Black (8806D),
Grey (8806C),
Sand (8806B),
Navy (8806A)

Waist 32" to 50". Leg length 29.5" to 37".

Miami - Tailored fit - pressed flat

Tan (8807G),
Royal Blue (8807F),
Olive (8807E),
Black (8807D),
Grey (8807C),
Sand (8807B),
Navy (8807A) as worn

Waist 28" to 42". Leg length 29.5" to 37".





NEW

Regular Fit Floral Needlecord Cotton Shirts

100% cotton.

- 1. Wine (4552A) *as worn*
- 2. Navy (4552B)

S, M, L, XL, XXL, XXXL

WORN WITH
Plain Black Rib Sock (1908A)



NEW

**Tailored Fit Cunningham Supima®
Corduroy Jeans**

98% cotton, 2% elastane. 270g.

- Khaki (8017C),
- Stone (8017A),
- Sand (8017B) *as worn*,
- Navy (8017D)

Waist 30" to 48". Leg length 29.5" to 37".

Khaki

Stone

Sand

Navy



Regular Fit Tattersall Check Cotton Shirts

100% cotton.

1. Blue and Forest (4556A)
2. Gold (4556B)
3. Navy (4557A) with button down collar, as worn
4. Navy and Rouge (7907AR)

Collar (inches) 15, 15.5, 16, 16.5, 17, 17.5, 18, 18.5, 19, 19.5, 20

NEW
COLOURS
ADDED



Regular Fit Kerswell Cotton Moleskin Trousers

98% cotton, 2% elastane. 271g.

Navy (8872B) as worn,
Olive (8872D),
Berry (8872A),
Ginger (8872F),
Stone (8872C)

Waist 30" to 46". Leg length 29.5" to 37".



WORN WITH
Warwick Tan and Black Reversible Leather Belt (1785A)

WORN WITH
Cunningham Navy Supima® Corduroy Jeans (8017D)



NEW

Regular Fit Melange Check Cotton Shirts

100% cotton.

1. Wine (4553B) *as worn*
2. Navy (4553A)

S, M, L, XL, XXL, XXXL



NEW

Regular Fit Melange Check Cotton Shirts

100% cotton.

1. Plum (4539D)
2. Red (4539A)
3. Airforce Blue (4539B)
4. Mustard (4539C)

S, M, L, XL, XXL, XXXL



Email: orders@brooktaverner.com



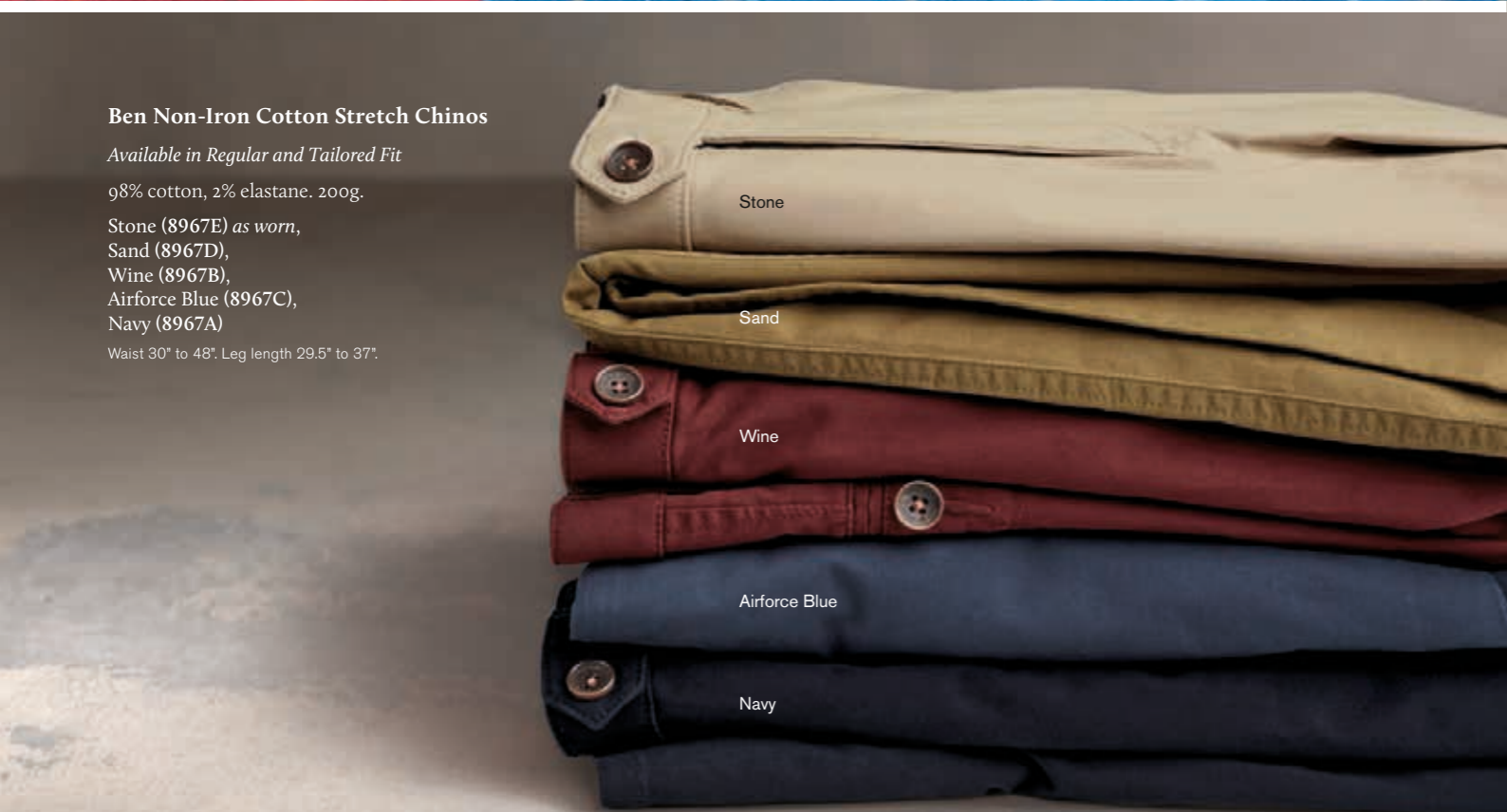
Regular Fit Tattersall Check Cotton Shirts

100% cotton.

1. Mustard with Merlot and Yellow Check (4430C)
2. Rouge with Forest and Yellow Check (4430B)
3. Blue with Aqua and Yellow Check (4430A) *as worn*

Collar (inches) 15, 15.5, 16, 16.5, 17, 17.5, 18, 18.5, 19, 19.5, 20

WORN WITH
Durham Brown Plaited Leather Belt (1783A)



Ben Non-Iron Cotton Stretch Chinos

Available in Regular and Tailored Fit

98% cotton, 2% elastane. 200g.

Stone (8967E) *as worn*,
Sand (8967D),
Wine (8967B),
Airforce Blue (8967C),
Navy (8967A)

Waist 30" to 48". Leg length 29.5" to 37".

Stone

Sand

Wine

Airforce Blue

Navy



NEW

Regular Fit Check Cotton Shirts

100% cotton.

- 1. Red and Navy (4535B) *as worn*
- 2. Lime and Navy (4535A) *as shown below*
- 3. S, M, L, XL, XXL, XXXL

NEW

Bryan Lambswool Shawl Collar Cardigan

80% wool, 20% nylon. 7 gauge.

Navy (4564A) *as shown below*,
Silver Grey (4564B) *see page 6*

S, M, L, XL, XXL, XXXL

STYLED WITH
Boulder Indigo Denim Jeans (8958A)
Durham Brown Leather Plaited Belt (1783A)



Fine Needlecord Shirts

Regular fit. 100% cotton needle cord.

- 1. Gold Needle Cord (7984C)
- 2. Forest Needle Cord (7984D)
- 3. Wine Needle Cord (7984B)
- 4. Navy Needle Cord (7984A)

S, M, L, XL, XXL, XXXL

NEW

**Regular Fit Black and Charcoal Check
Cotton Crepe Shirt (4541A)**

100% cotton.

S, M, L, XL, XXL, XXXL



WORN WITH
Boulder Charcoal Denim Jeans (8958E)

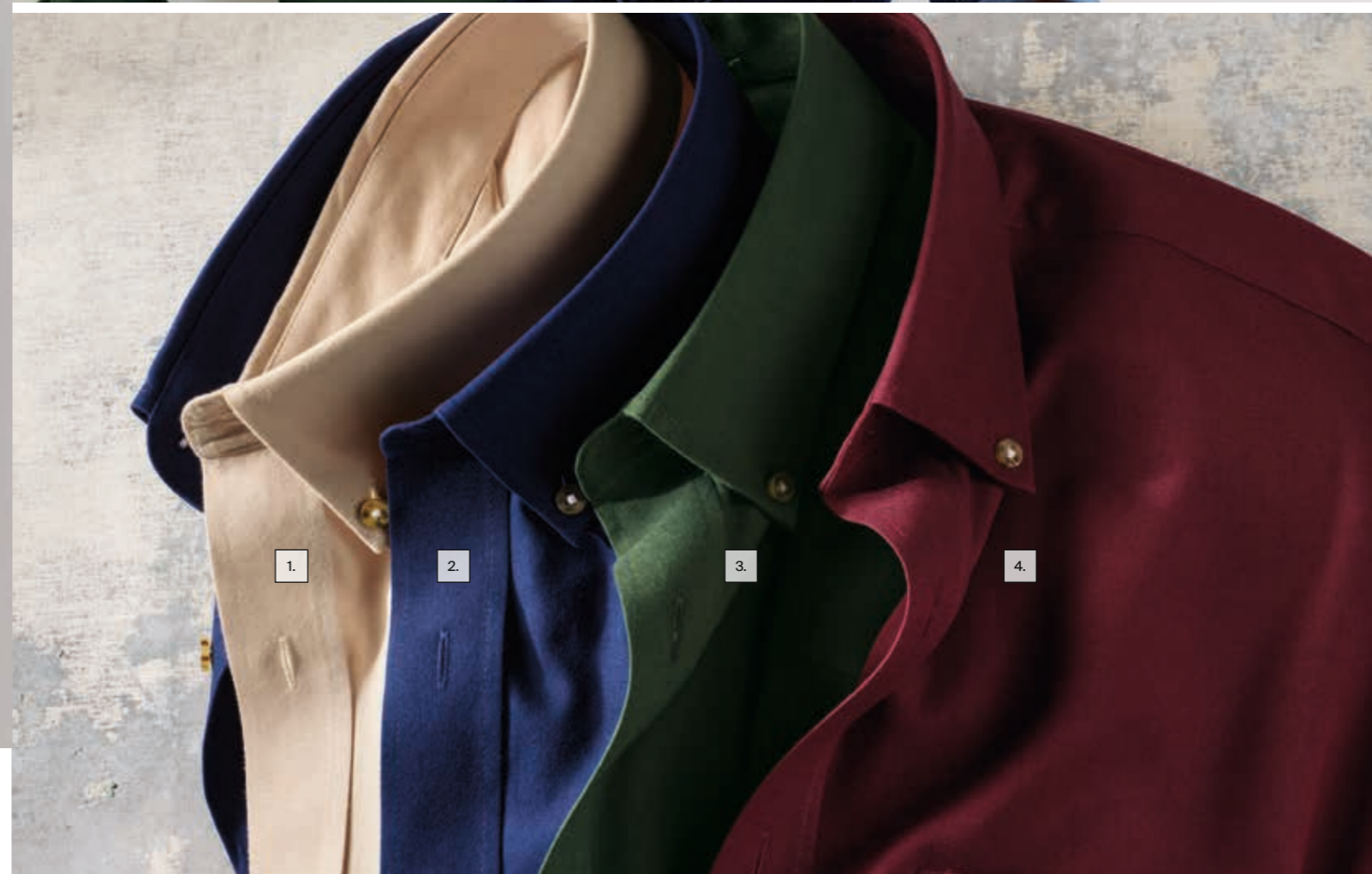
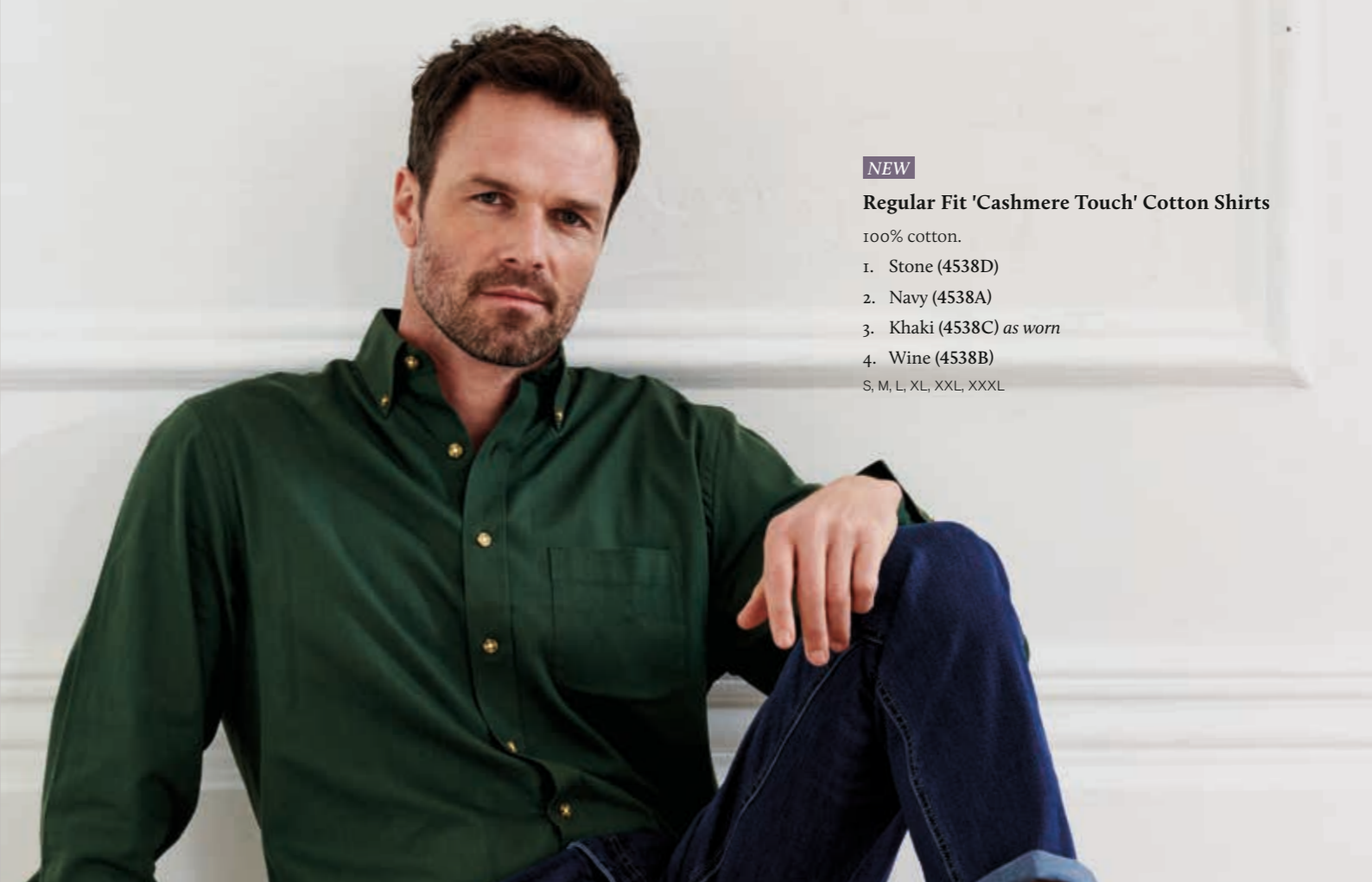
NEW

Regular Fit 'Cashmere Touch' Cotton Shirts

100% cotton.

1. Stone (4538D)
2. Navy (4538A)
3. Khaki (4538C) *as worn*
4. Wine (4538B)

S, M, L, XL, XXL, XXXL



NEW

Regular Fit Check THERMOLITE® Shirts

70% cotton, 30% THERMOLITE® polyester.

1. Wine (4543B)
 2. Mustard (4543A) *as worn*
- S, M, L, XL, XXL, XXXL



NEW

Tailored Fit Navy Check Cotton Shirt (4546A)

100% cotton.

S, M, L, XL, XXL, XXXL



WORN WITH
Boulder Indigo Denim Jeans (8958A)



NEW

Regular Fit Jasper Check Cotton Shirts

100% cotton.

Rust (4537B) *as worn*

Turquoise (4537A) *see online*

S, M, L, XL, XXL, XXXL

WORN WITH

Boulder Vintage Blue Denim Jeans (8958C)

Warwick Tan and Black Reversible Leather Belt (1785A)

WORN WITH

Charlbury Navy Lambswool Jumper (7937A)

Boulder Charcoal Denim Jeans (8958E)

Swaledale Brown Leather Ranger Boots (1755A)



Mustard Check Brushed Cotton Overshirt (4405A)

100% cotton.

S, M, L, XL, XXL, XXXL



NEW

Regular Fit Winter Print Shirts

100% cotton.

Multicoloured Deers (4549A) *as worn by Simon*
Multicoloured Chalets (4549B) *as worn by Joss*
S, M, L, XL, XXL, XXXL

NEW

Regular Fit Wine Woodland Cotton Shirt (4548C) *as worn by Remy*

100% cotton.

S, M, L, XL, XXL, XXXL

See page 89 for full range



WORN WITH
Boulder Indigo Denim Jeans (8958A)

WORN WITH
Ben Navy Cotton Stretch Chinos (8967AT)
Durham Brown Leather Plaited Belt (1783A)

WORN WITH
Aristotle Navy Textured Cotton Stretch Chinos (8962AT)
Hereford Black Leather Jean's Belt (1780A)

NEW

**Tailored Fit Champion Grey Melange
Knitted Wool Blend Jacket (5396A)**

45% polyester, 30% wool, 25% acrylic. 345g.
38" to 50" short, 38" to 54" regular, 40" to 50" long

WORN WITH
Charcoal Cashmere Jumper (4076D)



NEW

**Tailored Fit Spencer Oatmeal Twill
Wool Jacket (5405A)**

100% Merino wool. 375g.
38" to 50" short, 38" to 54" regular, 40" to 50" long

WORN WITH
Noah Mocha Brick Stitch Cotton Jumper (4453D)
Cunningham Stone Supima® Corduroy Jeans (8017A)



NEW

Tailored Fit Zane Cashmere Blend Jacket

80% wool, 20% cashmere. 256g.

Navy (5419A) *as worn*,
Charcoal (5419B) *as worn opposite*

38" to 48" short, 38" to 54" regular, 40" to 48" long

WORN WITH

Demuro Burgundy Brick Stitch Pure Cotton Polo Shirt (4530B)
Olney Navy Flannel Trousers (8706FT)



**Regular Fit Midnight Blue
Poppy Print Shirt (4417A)**

Regular fit. 100% cotton.

S, M, L, XL, XXL, XXXL



WORN WITH

Boulder Black Denim Jeans (8958D)

NEW

Bennett Pure Cotton Long Sleeve Polo Shirt

100% cotton. 12 gauge.

Blue (4516C),
Grey (4516B) *as worn*,
Rust (4516D),
Navy (4516A)

S, M, L, XL, XXL, XXXL



Blue

Grey

Rust

Navy

NEW

Tailored Fit Carberry Navy Puppytooth Wool Blend Jacket (5394A)

70% polyester, 20% wool, 10% other fibres. 335g.

38" to 50" short, 38" to 54" regular, 40" to 50" long



WORN WITH
Olney Airforce Blue Flannel Trousers (8706ET)

NEW

**Regular Fit Dee Olive Herringbone
Wool Blend Jacket (5342A)**

80% polyester, 20% wool. 375g.

38" to 50" short, 38" to 54" regular, 40" to 50" long



WORN WITH
Bennett Navy Pure Cotton Long Sleeve Polo Shirt (4516A)
Yeo Navy Winter Weight THERMOLITE® Trousers (8996AT)

Yeo Winter Weight THERMOLITE® Trousers - superior warmth without the bulk

Available in Regular and Tailored Fit

54% cotton, 45% THERMOLITE® polyester, 1% elastane. 270g.

Navy (8996A) as worn,
Rust (8996C),
Forest (8996B),
Wine (8996D)

Waist 30" to 48". Leg length 29.5" to 37".

NEW
COLOUR
ADDED



Navy

Rust

Forest

Wine

TWO FITS, FOUR COLOURS



Wine

Navy

Black

THREE STYLES, THREE COLOURS



Hugo Turtle Neck Jumper

Plockton Long Sleeve
Polo Shirt

Salcombe Waistcoat



Extra Fine Merino Wool Knitwear

100% extra fine Merino wool.

S, M, L, XL, XXL, XXXL

Hugo Turtle Neck Jumper

Wine (4238E) *as worn opposite*,
Navy (4238A),
Black (4238C)

Plockton Long Sleeve Polo Shirt

Wine (4013E),
Navy (4013A) *as worn*,
Black (4013C)

Salcombe Waistcoat

Wine (4012E),
Navy (4012A),
Black (4012C)

WORN WITH
Walnut Wheat Tan Wingtip Brogue Shoes (1817A)



NEW

Tailored Fit Zane Cashmere Blend Jacket - left

80% wool, 20% cashmere. 256g.
Charcoal (5419B) as worn by Remy,
Navy (5419A) see page 110
38" to 48" short, 38" to 54" regular, 40" to 48" long

NEW

Tailored Fit York Wine Melange Textured Wool Jacket (5418A) - centre

100% pure new wool. 275g.
38" to 48" short, 38" to 54" regular, 40" to 48" long

NEW

Tailored Fit Swinburn Grey Puppytooth Wool Blend Jacket (5414A) - right

60% wool, 30% polyester, 10% other fibres. 315g.
38" to 48" short, 38" to 54" regular, 40" to 48" long

WORN WITH
Demi Navy Brick Stitch Pure Cotton Polo Shirt (4530A)
Boulder Black Denim Jeans (8958D)

WORN WITH
Hugo Navy Turtle Neck Jumper (4238A)
Boulder Indigo Denim Jeans (8958A)

WORN WITH
Hugo Black Turtle Neck Jumper (4238C)
Boulder Black Denim Jeans (8958D)

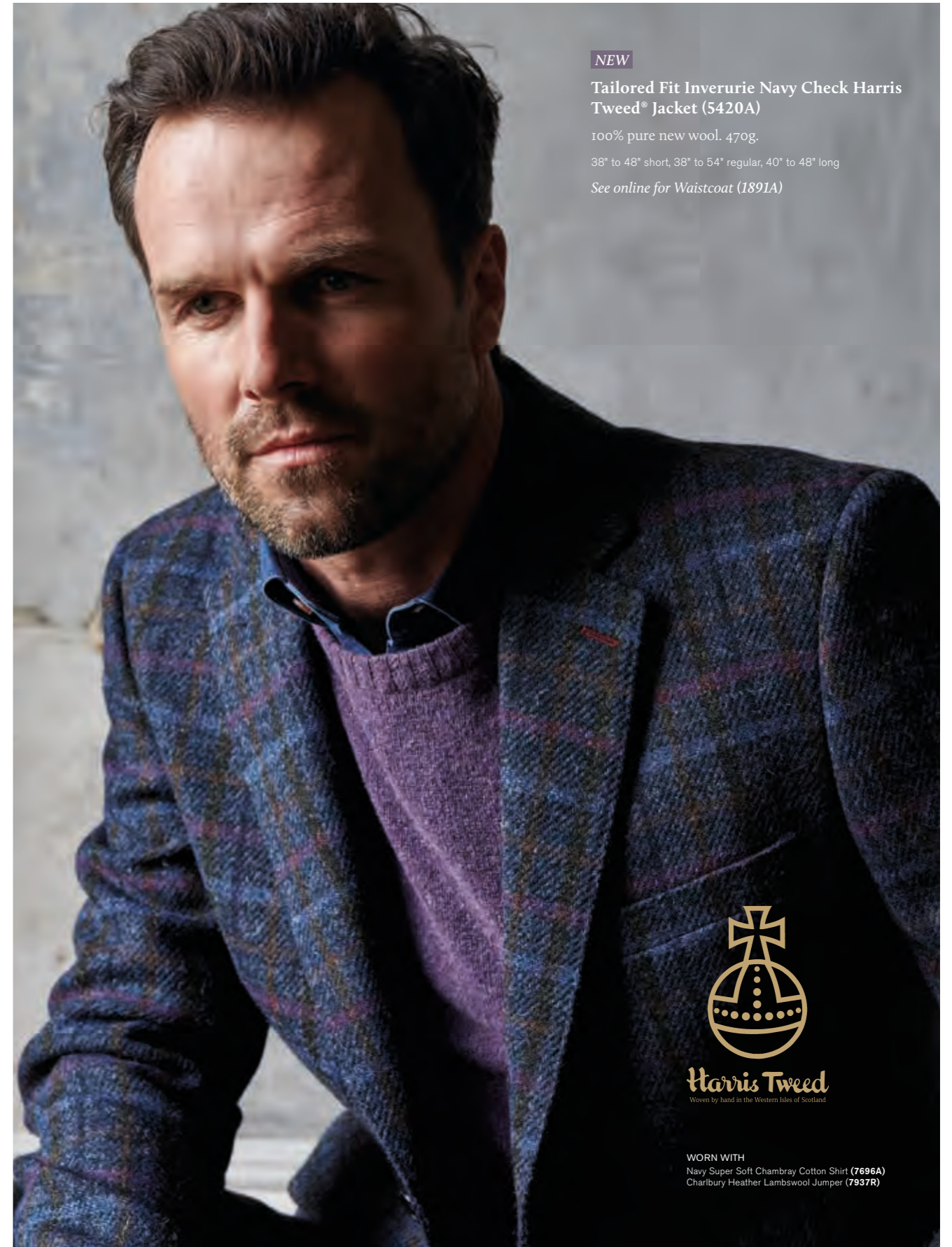


NEW

Tailored Fit York Wine Melange Textured Wool Jacket (5418A)

100% pure new wool. 275g.
38" to 48" short, 38" to 54" regular, 40" to 48" long

WORN WITH
Hugo Navy Turtle Neck Jumper (4238A)



NEW

Tailored Fit Inverurie Navy Check Harris Tweed® Jacket (5420A)

100% pure new wool. 470g.
38" to 48" short, 38" to 54" regular, 40" to 48" long
See online for Waistcoat (1891A)



Harris Tweed
Woven by hand in the Western Isles of Scotland

WORN WITH
Navy Super Soft Chambray Cotton Shirt (7696A)
Charlbury Heather Lambswool Jumper (7937R)



Off White

Vintage Blue

Indigo

Charcoal

Black

TWO FITS, FIVE COLOURS



Tailored Fit Haincliffe Wool Jacket

100% pure new wool. 375g.

JACKET

Blue Check (3869A) *as worn*,
Green Check (3869B)

36" to 54" short, 36" to 54" regular, 38" to 54" long

See pages 40 & 41 for Suit

Douglas and Boulder Denim Jeans

Available in Regular and Tailored Fit

98% cotton, 2% elastane. 400g.

Douglas - Regular fit

Off White (8957E),
Vintage Blue (8957C),
Indigo (8957A),
Charcoal (8957E),
Black (8957D)

Boulder - Tailored fit

Off White (8958F),
Vintage Blue (8958C),
Indigo (8958A) *as worn*,
Charcoal (8958E),
Black (8958D)

Waist 30" to 48". Leg length 29.5" to 37".

FABRIC
WOVEN BY
ABRAHAM MOON
OF YORKSHIRE

WORN WITH
Sheridan Navy Cotton Rugby Sweatshirt (4512A)



NEW

Tailored Fit Swinburn Grey Puppytooth Wool Blend Jacket (5414A)

60% wool, 30% polyester, 10% other fibres. 315g.
38" to 48" short, 38" to 54" regular, 40" to 48" long

WORN WITH
Hugo Black Turtle Neck Jumper (4238C)
Boulder Black Denim Jeans (8958D)



Regular Fit Otley Navy Pure New Wool Blazer (3032A)

100% pure new wool. 300g.
36" to 54" short, 36" to 60" regular, 38" to 54" long

WORN WITH
Hugo Navy Turtle Neck Jumper (4238A)
Off White Boulder Jeans (8958F)



NEW

Regular Fit Edlingham Wool Blend Jacket

70% polyester, 20% wool, 10% other fibres. 340g.

Blue Check (5359A) *as worn opposite*,
Moss Check (5359B) *as worn*

38" to 50" short, 38" to 54" regular, 40" to 50" long

WORN WITH
Navy Super Soft Chambray Cotton Shirt (7696A)
Charlbury Wine Lambswool Jumper (7937J)



NEW

Demuro Brick Stitch Pure Cotton Polo Shirt

100% cotton. 12 gauge.

Navy (4530A),
Burgundy (4530B) *as worn opposite*

S, M, L, XL, XXL, XXXL

Navy

Burgundy



WORN WITH
Boulder Indigo Denim Jeans (8958A)



NEW

Tailored Fit Oliver Melange Wool Blend Suit

52% polyester, 43% wool, 5% elastane. 170g.

JACKET

Moss (5422A),
Rust (5422B)

38" to 50" short, 38" to 54" regular, 40" to 50" long.

TROUSERS

Moss (8023A),
Rust (8023B)

Waist 30" to 48". Leg length 29.5" to 37".

See online for Waistcoats (1880)



WORN WITH
White Herringbone Double Cuff Cotton Shirt (7720A)
Blue Floral Tie and Hanky Set (1927B)

WORN WITH
White Semi-Plain Double Cuff Cotton Shirt (4324AT)
Blue Floral Tie Set (1928C)



NEW

Tailored Fit Oliver Melange Wool Blend Suit

52% polyester, 43% wool, 5% elastane. 170g.

JACKET

Moss (5422A) *see page 129*,
Rust (5422B) *as worn*

38" to 50" short, 38" to 54" regular, 40" to 50" long.

TROUSERS

Moss (8023A) *see page 129*,
Rust (8023B) *as worn*

Waist 30" to 48". Leg length 29.5" to 37".

See online for Waistcoats (1880)

WORN WITH
Blue Floral Tie and Hanky Set (1927B)



Business Casual Plain and Print Cotton Stretch Shirts

Available in Regular and Tailored Fit and Three Sleeve Lengths

97% cotton, 3% elastane.

1. White with Blue and Lilac Butterfly Trim (4426N) *as worn*
2. Lilac with Blue and Lilac Butterfly Trim (4426Q)
3. Silver Grey with Navy and Blue Terrier Trim (4426L)
4. Sky Blue with Navy and Blue Terrier Trim (4426J)
5. Pink with Cerise Floral Trim (4426G)
6. Ivory with Cerise Floral Trim (4426E)
7. Mid Blue with Blue and Purple Floral Trim (4426C)
8. Navy with Blue and Purple Floral Trim (4426A)

Collar (inches) 15, 15.5, 16, 16.5, 17, 17.5, 18, 18.5, 19, 19.5, 20



Tailored Fit Constable Linen Blend Suit

54% polyester, 24% wool, 20% linen,
2% elastane. 290g.

JACKET

Navy (3771B) *as worn*,
Natural (3771A) *see page 135*

36" to 50" short, 36" to 54" regular, 38" to 50" long

TROUSERS

Navy (8844B) *as worn*,
Natural (8844A) *see page 135*

Waist 30" to 48". Leg length 29.5" to 37".

WAISTCOAT

Navy (1621B) *as worn opposite*,
Natural (1621A) *see page 134*

36" to 54" regular

WORN WITH
Silver Grey with Navy and Blue Terrier Trim Shirt (4426MR)
Blue Floral Tie (1928B)





Tailored Fit Constable Linen Blend Suit

54% polyester, 24% wool, 20% linen,
2% elastane. 290g.

JACKET

Natural (3771A) *as worn*,
Navy (3771B) *see page 132*

36" to 50" short, 36" to 54" regular, 38" to 50" long

TROUSERS

Natural (8844A) *as worn*,
Navy (8844B) *see page 132*

Waist 30" to 48". Leg length 29.5" to 37".

WAISTCOAT

Natural (1621A) *as worn opposite*,
Navy (1621B) *see page 133*

36" to 54" regular

WORN WITH

White with Blue and Lilac Butterfly Trim Shirt (4426PR)
Blue Stripe Tie and Hankie Set (1843B)



Tailored Fit Cassino Washable Suit

54% polyester, 44% wool, 2% elastane.
Machine washable.

JACKET

Navy (5985A) *as worn*,
Charcoal (5985C),
Black (5985D),
Grey (5985G),
Mid Blue (5985H)

34" to 44" short, 34" to 46" regular, 34" to 44" long

TROUSER

Navy (8655A) *as worn*,
Charcoal (8655C),
Black (8655D),
Grey (8655G),
Mid Blue (8655H)

Waist 28" to 40". Leg length 29.5" to 37".

WORN WITH
White with Blue and Lilac Butterfly Trim Shirt (4426PR)
Gold Geometric Pattern Tie (1928G)



Dawlish Super 110s Wool Suit

Available in Regular and Tailored Fit
100% super 110s Merino wool.

JACKET

Charcoal Birdseye (5982C) *as worn*,
Navy Birdseye (5982D) *see online*,
Navy Herringbone (5982B) *see online*

38" to 46" short, 36" to 50" regular, 38" to 46" long

TROUSER

Charcoal Birdseye (8523C) *as worn*,
Navy Birdseye (8523D) *see online*,
Navy Herringbone (8523B) *see online*

Waist 30" to 46". Leg length 29.5" to 37".

WORN WITH
Sky Blue Semi-Plain Double Cuff Cotton Shirt (4324BT)
Rust Geometric Pattern Tie (1928F)

Regular Fit Epsom Pinstripe Wool Suit

100% super 110s Merino wool. 295g.

JACKET

Navy Pinstripe (5636D) *as worn*,
Grey Pinstripe (5636A) *see online*

36" to 54" short, 36" to 60" regular, 38" to 54" long

TROUSER

Navy Pinstripe (8418D) *as worn*,
Grey Pinstripe (8418A) *see online*

Waist 30" to 56". Leg length 29.5" to 37"

WORN WITH
White Poplin Single Cuff Cotton Shirt (7762A)
Navy Twill Pure Silk Tie (1635A)

Tailored Fit Avalino Washable Suit

54% polyester, 44% wool, 2% elastane.
Machine washable.

JACKET

Navy (5647A) *as worn*,
Charcoal (5647C),
Black (5647D),
Charcoal Pinstripe (5647F),
Grey (5647G),
Mid Blue (5647H)

36" to 48" short, 36" to 50" regular, 38" to 48" long

TROUSER

Navy (8387A) *as worn*,
Charcoal (8387C),
Black (8387D),
Charcoal Pinstripe (8387F),
Grey (8387G),
Mid Blue (8387H)

Waist 28" to 44". Leg length 29.5" to 37".

See online for full range and Waistcoats (1074)

WORN WITH
Sky Blue Semi-Plain Double Cuff Cotton Shirt (4324BT)
Navy Twill Pure Silk Tie (1635A)



WORN WITH
 White with Playing Card Print Dress Shirt (4560A)
 Black Satin Bow Tie (1603A)



Tailored Fit Sapphire Black Dinner Suit - *opposite*
 54% polyester, 44% wool, 2% elastane. 375g.
 Black with Black Satin Trim
 JACKET (3708A)
 TROUSERS (8808A)

Tailored Fit Tees Black and Navy Paisley Jacquard Evening Jacket with Satin Shawl Lapel (5347A) - *below*
 100% polyester. 270g.
 38" to 50" short, 36" to 54" regular, 38" to 50" long

Tailored Fit Severn Midnight Velvet Evening Jacket (5344A) - *right*
 100% polyester. 357g.
 38" to 50" short, 36" to 54" regular, 38" to 50" long



WORN WITH
 Jacquard Cotton Shirt (4555A)
 Navy Sipping Corduroy Jeans (8017D)
 Reversible Leather Belt (1775A)

Party Time



WORN WITH
 Hugo Navy Turtle Neck Jumper (4238A)



NEW

Tailored Fit Jacquard Cotton Shirts

100% cotton.

Wine Floral (4555B) as worn above,
Midnight Paisley (4555A) as worn below

Collar (inches) 15, 15.5, 16, 16.5, 17, 17.5, 18

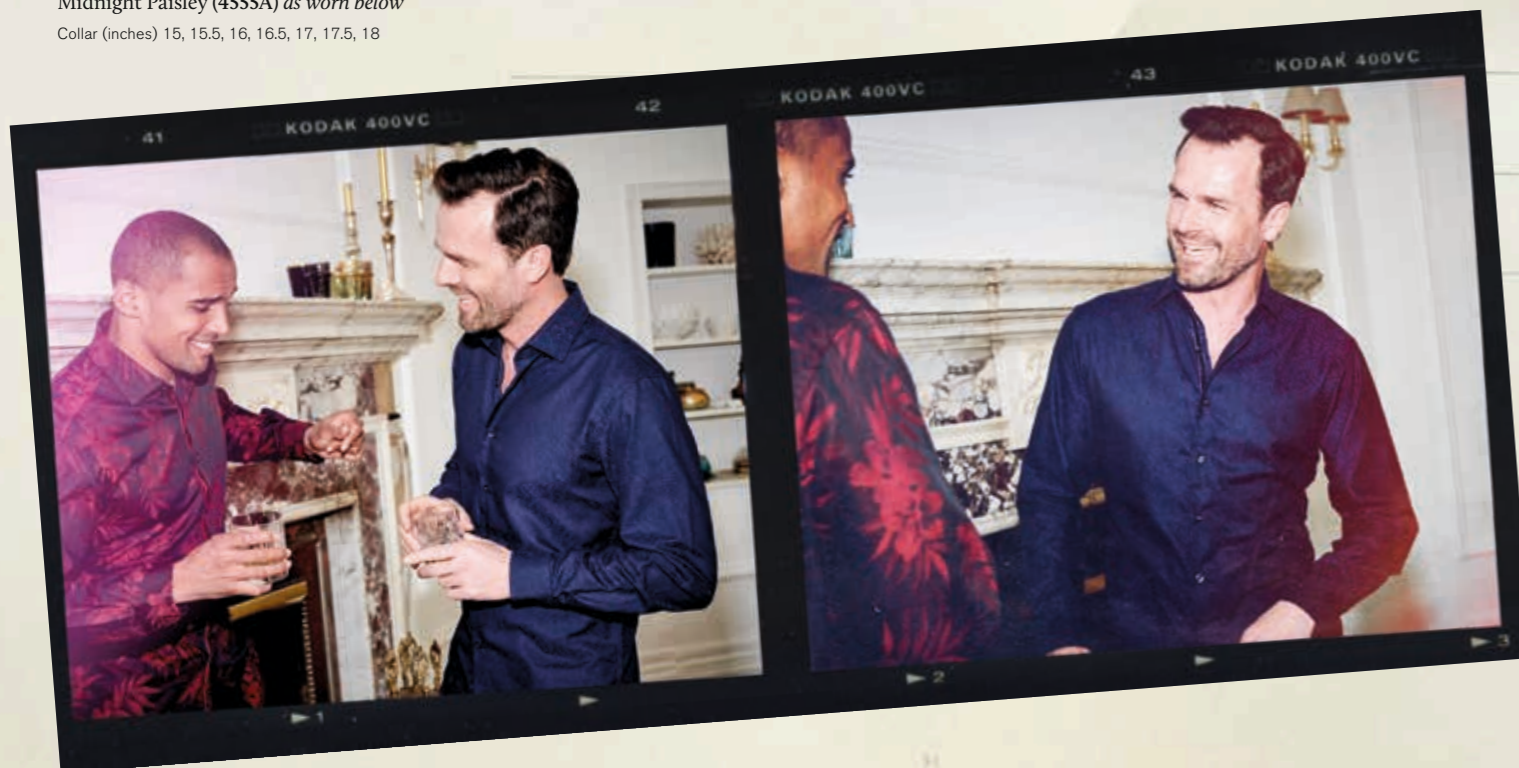


NEW

Regular Fit White with Navy Playing
Card Print Cotton Dress Shirt (4560A)

100% cotton.

Collar (inches) 15, 15.5, 16, 16.5, 17, 17.5, 18, 18.5, 19, 20



New Year's Eve 2024

FRONT COVER

NEW

Tailored Fit Zane Charcoal Cashmere Blend Jacket (5419B)

80% wool, 20% cashmere. 256g.

38" to 48" short, 38" to 54" regular, 40" to 48" long

See page 110 for full range

BACK COVER

NEW

Tailored Fit Inverurie Navy Check Harris Tweed® Jacket (5420A)

100% pure new wool. 470g.

38" to 48" short, 38" to 54" regular, 40" to 48" long

See online for Waistcoat (1891A)

